



**Solomon Islands Government**

**Statistical Bulletin: No: 15/2011**

**VISITOR STATISTICS**

(Second Quarter 2011)

**Solomon Islands Statistics Office**

**Ministry of Finance**

**Honiara**

## TABLE OF CONTENTS

Introduction .....	3
COMMENTARY OF RESULTS .....	5
<i>International Arrivals</i> .....	5
<i>Arrivals by Country of Residence</i> .....	5
<i>Visitor by Month</i> .....	5
<i>Tourists</i> .....	5
<i>Visitors by Purpose of Visit</i> .....	5
<i>Visitor by Age Group</i> .....	5
<i>Visitor by Occupation:</i> .....	5
<i>Visitor by Carrier</i> .....	5

### ***Charts***

Chart 1: Arrivals by Category, 2 <sup>nd</sup> Quarter 2011 .....	6
Chart 2: Visitor Arrivals by Country of Residence by quarter: 2 <sup>nd</sup> Quarter 2011 .....	7
Chart 3: Visitor Arrivals by Month, 2007 to 2 <sup>nd</sup> Quarter 2011 .....	8
Chart 4: Tourist Arrivals by Country of Residence, 2 <sup>nd</sup> Quarter 2011 .....	9
Chart 5: Visitor Arrivals by Country of Residence by Purpose of Visit, 2 <sup>nd</sup> Quarter 2011 .....	10
Chart 6: Visitor Arrivals by Age group category by sex, 2 <sup>nd</sup> quarter 2011 .....	11
Chart 7: Visitor Arrivals by Occupation by sex, 2 <sup>nd</sup> quarter 2011 .....	12
Chart 8: Visitor Arrivals by Carrier by sex, 2 <sup>nd</sup> quarter 2011 .....	13

### ***Tables***

Table 1: Total Arrivals Classified by Purpose of Travel by Sex by Year by Quarter: 2 <sup>nd</sup> Quarter 2011 .....	6
Table 2: Visitors Arrivals by Country of Residence by Year by Quarter: 2 <sup>nd</sup> Quarter 2011 .....	7
Table 3: Visitors Arrivals by Month: 2006 to 2 <sup>nd</sup> Quarter 2011 .....	8
Table 4: Visitors Classified as Tourists by Country of Residence by Year, Quarter and Average Length .....	9
of Stay: 2008 to 2 <sup>nd</sup> Quarter 2011 .....	9
Table 5: Visitor Arrivals by Country of Residence by Purpose of Visit by sex: 2 <sup>nd</sup> Quarter 2011 .....	10
Table 6: Visitors Arrivals by Country of Residence by Age Groups by sex: 2 <sup>nd</sup> Quarter 2011 .....	11
Table 7: Visitors Arrivals by Country of Residence by Occupation and Sex: 2 <sup>nd</sup> Quarter 2011 .....	12
Table 8: Visitors Arrivals by Country of Residence by Carrier By Sex: 2 <sup>nd</sup> Quarter 2011 .....	13

Appendix 1 .....	14
<i>Concepts and Definitions</i> .....	14
Appendix 2 .....	15

Table 9: Intending Resident Arrivals by Country of residence by Occupation and sex: 2 <sup>nd</sup> Quarter 2011 .....	15
Table 10: Intending Resident Arrivals by country of Residence by Age Groups by Sex: 2 <sup>nd</sup> Quarter 2011 .....	16
Table 11: Returning Resident Arrivals by country of Residence by Occupation and sex: 2 <sup>nd</sup> Quarter 2011 .....	17
Table 12: Returning Resident Arrivals by country of Residence by Age Groups and sex: 2 <sup>nd</sup> Quarter 2011 .....	18

## Introduction

This quarterly bulletin is produced by the National Statistics Office NSO in the Ministry of Finance and Treasury. It provides information on international arrivals comprised of the returning resident, intending resident, and visitor. The explanation of these categories is provided in Appendix 1 of the bulletin.

Visitor category comprised the bigger share of the bulletin, (portrayed in tables 1 to 8); compared to the returning and intending resident category portrayed in Tables 1, and 9 to 12. The bulletin includes twelve tables and eight charts stretched over cross-field tabulation, preferably to meet information need of local, regional, and international researchers.

The information captured through a self fill Disembarkation form that was completed by all disembarking passengers. The forms were collected by Immigration officials at international check-in counters on arrival. The coverage of the bulletin is complete.

Sheer acknowledgement is owed to the Immigration Department for their continuous support of this bulletin, by providing an office space and permitting the statistics office to input completed forms. With the official arrangement in-placed between the Statistics and Immigration departments this bulletin is possible.

The inclusion of four new tables 9 to 12 in Appendix 2 of the bulletin anticipates to complete the distribution portrait of Intending and Returning resident. The distribution is by age groups, occupation and by country of usual residence.

Data limitations, highlighted in the previous bulletin still remain, though some have substantially improved but noted again for ease of reference as follows:-

- Data entry duplication by the Immigration and Statistics departments was a long standing issue. Discussion of the issues had been made by the two departments, though resolution has been recognized, this was yet to be put in place.
- Timeliness of visitor statistics has improved but the bulletin may be delayed by the production process.
- The information contained in the bulletin is based on information captured from the data source by the SINSO.
- The monetary value of the industry is not available and thus not possible in this bulletin. The concepts and definitions of the arrival categories were included in Appendix 1. The symbols that are likely to be used are:
  - zero if representing a value
  - negative change if representing a percentage change
  - + positive change if representing a percentage change
  - p preliminary figure, subject to revision
  - r revised
  - e estimate
  - n/a not available

For more information contact the Statistics Office, Department of Finance and Treasury:

TELEPHONE : (677) 27835

FACSMILE : (677) 23775

E-MAIL : STATS-management@mof.gov.sb

: STATS-SocialDemography@mof.gov.sb

WEBSITE : **<http://www.spc.int/prism/country/sb/stats>**

Contact persons:      1. Mrs. Irene KALAUMA, Principal Statistician  
                                 2. Mrs. Anterlyn TUZAKANA, Senior Statistician

## COMMENTARY OF RESULTS

### International Arrivals

Total Arrivals for the second quarter of 2011 was 9,867. This is an increase of 4% compared to the previous quarter (1<sup>st</sup> Quarter 2011). Compared to the same quarter last year, it showed an increase of 13.6%.

Arrivals classified by the category for the second quarter of 2011 showed that returning resident comprise of 34% while intending resident 10% and visitor 56%.

Visitor arrivals for the second quarter showed an increase of 7.5% to 5,505 compared to the first quarter 2011 figure of 5,119. Compared to the same quarter last year it showed an increase of 16%.

Table 1 showed, visitor and returning resident categories comprised the larger proportion of all arrivals while the intending resident represents the lesser share during the quarter. Chart 1, gives a clear picture of all the categories.

### Visitor by Country of Residence

Arrivals by country of residence for second quarter showed that Australians (50.2%) are frequent travellers to Solomon Islands followed by Other Asia (9.5%), Papua New Guinea (8.7%), New Zealand (7.9%), Fiji (5.9%) and USA (4.4%).

### Visitor by Month

Visitors by monthly arrivals for second quarter revealed that June has the highest number of arrivals of 2,009 persons. This was followed by the month of May which recorded a total of 1,760 persons and April the least with 1,736 persons.

### Tourists

Tourist<sup>1</sup> arrivals for the second quarter of the year totalled to 1,399 persons and they spent an average of 15 days in the country. The highest number of tourists recorded for the quarter comes from Australia (62%) and staying in the country for an average of 13 days. This was followed by USA and Other Asia (7.4%), NZ (4%) and PNG (3.8%).

### Visitor by Purpose of Visit

Distribution of visitors by purpose of visit confirmed Business & conference (40.9%) as most popular during the quarter. This was followed by Holiday & Vocation (25.4%), Other (20.8%), Visit friends & relatives (11.7%) and Transit & stopover the least by 1.2%.

### Visitor by Age Group

Visitor Arrivals by broad age groups show that 80% of arrivals were in the 25years to 64years age range. The younger and the older age brackets represent 16.6% while the remaining 3.5% represents arrivals who did not state their age. Male represent 74% of the arrival and female 26%. (Refer to Chart 6)

### Visitor by Occupation

Visitor by occupational category revealed that Other (32.8%) was the main occupation during the quarter. This is followed by Professional & Technical (33%), Administration and managerial (11.6%), No work (6.6%), Service worker (5.5%), and Production Related Work (5%), Table 7 further revealed that Australia not only dominated the Arrivals in terms of markets but also dominated most of the categories of occupations during the quarter. Refer to Table 7 for further analysis.

### Visitor by Carrier

The most popular carriers during the quarter were Solomon Airlines (47%) and Pacific Blue (22%). These were followed by Air Niugini (19%) and Air Pacific (9.2%).

---

<sup>1</sup> Refer to Appendix 1 for the definition

Table 1: Total Arrivals Classified by Purpose of Travel by Sex, by Year by Quarter: 2<sup>nd</sup> Quarter 2011

Year / Quarter	Returning Resident						Intending Resident				Visitor			Total		
	Solomon Islander			Non-Solomon Islander			All	M	F	T	M	F	T	M	F	All
	M	F	T	M	F	T										
2006 3 <sup>rd</sup>	1,094	557	1,651	58	8	66	1,717	481	114	595	1,705	733	2,438	3,338	1,412	4,750
4 <sup>th</sup>	2,699	1,255	3,954	2	2	4	3,958	659	165	824	2,234	907	3,141	5,594	2,329	7,923
2007 1 <sup>st</sup>	1,528	901	2,429	5	-	5	2,434	740	206	946	2,144	673	2,817	4,417	1,780	6,197
2 <sup>nd</sup>	1,798	913	2,711	102	31	133	2,844	696	195	891	2,817	1,037	3,854	5,413	2,176	7,589
3 <sup>rd</sup>	1,826	929	2,755	59	12	71	2,826	487	172	659	2,195	1,225	3,420	4,567	2,338	6,905
4 <sup>th</sup>	2,107	1,095	3,202	486	235	721	3,923	589	153	742	2,525	1,132	3,657	5,707	2,615	8,322
2008 1 <sup>st</sup>	1,537	938	2,475	4	2	6	2,481	537	174	711	2,094	879	2,973	4,172	1,993	6,165
2 <sup>nd</sup>	2,492	1,268	3,760	3	1	4	3,764	312	87	399	2,857	1,344	4,201	5,664	2,700	8,364
3 <sup>rd</sup>	1,593	952	2,545	761	437	1,198	3,743	605	155	760	3,138	1,480	4,618	6,097	3,024	9,121
4 <sup>th</sup>	2,507	1,366	3,873	969	453	1,422	5,295	396	125	521	3,063	1,409	4,472	6,935	3,353	10,288
2009 1 <sup>st</sup>	1,173	760	1,933	677	436	1,113	3,046	659	315	974	3,015	1,258	4,273	5,524	2,769	8,293
2 <sup>nd</sup>	1,427	728	2,155	471	238	709	2,864	611	244	855	3,242	1,374	4,616	5,751	2,584	8,335
3 <sup>rd</sup>	1,182	709	1,891	425	220	645	2,536	786	355	1,141	3,263	1,519	4,782	5,656	2,803	8,459
4 <sup>th</sup>	2,145	1,152	3,297	393	197	590	3,887	722	282	1,004	3,177	1,412	4,589	6,437	3,043	9,480
2010 1 <sup>st</sup>	1,045	695	1,740	550	342	892	2,632	808	380	1,188	3,115	1,095	4,210	5,518	2,512	8,030
2 <sup>nd</sup>	1,337	707	2,044	494	272	766	2,810	808	307	1,115	3,370	1,384	4,754	6,009	2,670	8,679
3 <sup>rd</sup>	1,421	730	2,151	485	274	759	2,910	835	316	1,151	4,494	1,768	6,262	7,235	3,088	10,323
4 <sup>th</sup>	2,783	1,550	4,333	13	4	17	4,350	848	284	1,132	3,766	1,529	5,295	7,410	3,367	10,777
2011 1 <sup>st</sup>	1,187	724	1,911	694	332	1,026	2,937	1,058	362	1,420	3,972	1,147	5,119	6,911	2,565	9,476
2 <sup>nd</sup>	1,601	880	2,481	615	292	907	3,388	716	258	974	4,071	1,434	5,505	7,003	2,864	9,867
Percentage change																
08 <sup>4th</sup> -09 <sup>1st</sup>	-53.2	-44.4	-50.1	-30.1	-3.8	-21.7	-42.5	66.4	152.0	86.9	-1.6	-10.7	-4.4	-20.3	-17.4	-19.4
09 <sup>1st</sup> -09 <sup>2nd</sup>	21.7	-4.2	11.5	-30.4	-45.4	-36.3	-6.0	-7.3	-22.5	-12.2	7.5	9.2	8.0	4.1	-6.7	0.5
08 <sup>2nd</sup> -09 <sup>2nd</sup>	-42.7	-42.6	-42.7	15600.0	23700.0	17625.0	-23.9	95.8	180.5	114.3	13.5	2.2	9.9	1.5	-4.3	-0.3
09 <sup>2nd</sup> -09 <sup>3rd</sup>	-17.2	-2.6	-12.3	-9.8	-7.6	-9.0	-11.5	28.6	45.5	33.5	0.6	10.6	3.6	-1.7	8.5	1.5
08 <sup>3rd</sup> -09 <sup>3rd</sup>	-25.8	-25.5	-25.7	-44.2	-49.7	-46.2	-32.2	29.9	129.0	50.1	4.0	2.6	3.6	-7.2	-7.3	-7.3
09 <sup>3rd</sup> -09 <sup>4th</sup>	81.5	62.5	74.4	-7.5	-10.5	-8.5	53.3	-8.1	-20.6	-12.0	-2.6	-7.0	-4.0	13.8	8.6	12.1
08 <sup>4th</sup> -09 <sup>4th</sup>	-14.4	-15.7	-14.9	-59.4	-56.5	-58.5	-26.6	82.3	125.6	92.7	3.7	0.2	2.6	-7.2	-9.2	-7.9
09 <sup>4th</sup> -10 <sup>1st</sup>	-51.3	-39.7	-47.2	39.9	73.6	51.2	-32.3	11.9	34.8	18.3	-2.0	-22.5	-8.3	-14.3	-17.4	-15.3
09 <sup>1st</sup> -10 <sup>1st</sup>	-10.9	-8.6	-10.0	-18.8	-21.6	-19.9	-13.6	22.6	20.6	22.0	3.3	-13.0	-1.5	-0.1	-9.3	-3.2
10 <sup>1st</sup> -10 <sup>2nd</sup>	27.9	1.7	17.5	-10.2	-20.5	-14.1	6.8	0.0	-19.2	-6.1	8.2	26.4	12.9	8.9	6.3	8.1
09 <sup>2nd</sup> -10 <sup>2nd</sup>	-6.3	-2.9	-5.2	4.9	14.3	8.0	-1.9	32.2	25.8	30.4	3.9	0.7	3.0	4.5	3.3	4.1
10 <sup>2nd</sup> -10 <sup>3rd</sup>	6.3	3.3	5.2	-1.8	0.7	-0.9	3.6	3.3	2.9	3.2	33.4	27.7	31.7	20.4	15.7	18.9
09 <sup>3rd</sup> -10 <sup>3rd</sup>	20.2	3.0	13.7	14.1	24.5	17.7	14.7	6.2	-11.0	0.9	37.7	16.4	30.9	27.9	10.2	22.0
09 <sup>4th</sup> -10 <sup>4th</sup>	29.7	34.5	31.4	-96.7	-98.0	-97.1	11.9	17.5	0.7	12.7	18.5	8.3	15.4	15.1	10.6	13.7
10 <sup>1st</sup> -11 <sup>1st</sup>	13.6	4.2	9.8	26.2	-2.9	15.0	11.6	30.9	-4.7	19.5	27.5	4.7	21.6	25.2	2.1	18.0
10 <sup>4th</sup> -11 <sup>1st</sup>	-57.3	-53.3	-55.9	5238.5	8200.0	5935.3	-32.5	24.8	27.5	25.4	5.5	-25.0	-3.3	-6.7	-23.8	-12.1
11 <sup>1st</sup> -11 <sup>2nd</sup>	34.9	21.5	29.8	-11.4	-12.0	-11.6	15.4	-32.3	-28.7	-31.4	2.5	25.0	7.5	1.3	11.7	4.1

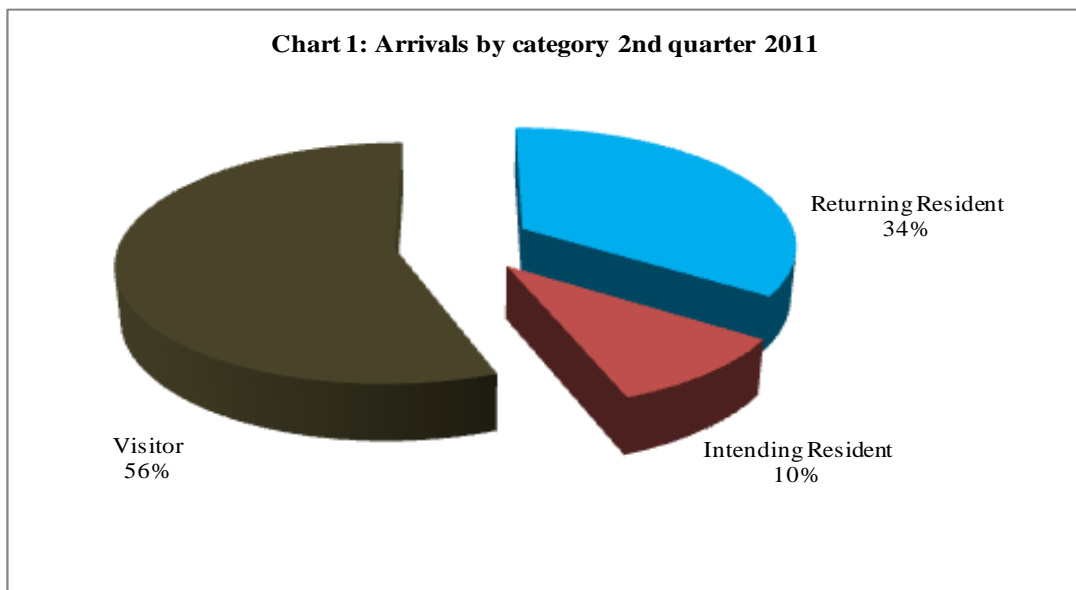


Table 2: Visitor Arrivals by Country of Residence by year by quarter: 2<sup>nd</sup> Quarter 2011

Country of Usual Residence	2007				2008					2009					2010					2011	
	Q2	Q3	Q4	Total	Q1	Q2	Q3	Q4	Total	Q1	Q2	Q3	Q4	Total	Q1	Q2	Q3	Q4	Total	Q1	Q2
Australia	1,747	1,449	1,574	5,960	1,291	1,971	2,184	1,967	7,413	1,952	2,361	2,354	2,235	8,902	2,087	2,544	3,362	2,758	10,751	2,569	2,763
PNG	261	208	333	1,007	181	243	234	248	906	254	260	228	356	1,098	305	248	339	469	1,361	443	479
US	282	291	275	953	198	279	336	292	1,105	177	263	345	249	1,034	127	236	287	212	862	188	243
NZ	295	297	214	987	166	256	318	357	1,097	363	324	379	298	1,364	274	335	647	454	1,710	385	433
UK	89	106	53	318	62	94	137	164	457	112	111	121	75	419	82	108	141	101	432	78	110
Japan	140	164	143	572	144	92	172	181	589	192	142	159	380	873	166	95	151	177	589	145	106
Germany	35	13	18	87	19	14	38	53	124	37	15	25	23	100	24	33	26	18	101	22	26
Canada	33	22	31	95	19	24	29	43	115	23	20	21	24	88	32	22	25	34	113	51	30
Oth.Pacific	162	120	163	593	165	417	242	332	1,156	312	213	281	144	950	167	125	123	170	585	185	185
Vanuatu	130	135	189	524	120	119	137	142	518	86	72	65	85	308	48	86	126	145	405	125	103
Hong Kong	6	3	-	11	34	6	15	2	57	3	9	5	-	17	10	0	23	5	38	12	12
Fiji	224	105	183	710	161	203	239	184	787	225	257	247	188	917	206	278	273	234	991	262	327
Other Asia	313	239	309	1,264	303	356	296	294	1,249	319	447	326	317	1,409	503	477	509	336	1,825	487	523
Netherlands	9	97	15	125	6	5	7	19	37	14	12	10	15	51	11	9	16	17	53	18	13
Oth.Europe	57	121	74	284	74	79	128	105	386	126	57	100	91	374	78	63	100	66	307	60	62
France	11	13	15	48	10	20	36	25	91	19	6	29	27	81	12	24	24	22	82	10	20
Italy	7	19	29	63	4	5	17	11	37	13	4	22	27	66	4	3	13	19	39	13	17
Oth.Country	53	18	39	147	16	18	53	53	140	46	43	65	55	209	74	68	77	58	277	66	53
<b>Total</b>	<b>3,854</b>	<b>3,420</b>	<b>3,657</b>	<b>13,748</b>	<b>2,973</b>	<b>4,201</b>	<b>4,618</b>	<b>4,472</b>	<b>16,264</b>	<b>4,273</b>	<b>4,616</b>	<b>4,782</b>	<b>4,589</b>	<b>18,260</b>	<b>4,210</b>	<b>4,754</b>	<b>6,262</b>	<b>5,295</b>	<b>20,521</b>	<b>5,119</b>	<b>5,505</b>
Percentage																					
Australia	45.3	42.4	43.0	43.4	43.4	46.9	47.3	44.0	45.6	45.7	51.1	49.2	48.7	48.8	49.6	53.5	53.7	52.1	52.4	50.2	50.2
PNG	6.8	6.1	9.1	7.3	6.1	5.8	5.1	5.5	5.6	5.9	5.6	4.8	7.8	6.0	7.2	5.2	5.4	8.9	6.6	8.7	8.7
US	7.3	8.5	7.5	6.9	6.7	6.6	7.3	6.5	6.8	4.1	5.7	7.2	5.4	5.7	3.0	5.0	4.6	4.0	4.2	3.7	4.4
NZ	7.7	8.7	5.9	7.2	5.6	6.1	6.9	8.0	6.7	8.5	7.0	7.9	6.5	7.5	6.5	7.0	10.3	8.6	8.3	7.5	7.9
UK	2.3	3.1	1.4	2.3	2.1	2.2	3.0	3.7	2.8	2.6	2.4	2.5	1.6	2.3	1.9	2.3	2.3	1.9	2.1	1.5	2.0
Japan	3.6	4.8	3.9	4.2	4.8	2.2	3.7	4.0	3.6	4.5	3.1	3.3	8.3	4.8	3.9	2.0	2.4	3.3	2.9	2.8	1.9
Germany	0.9	0.4	0.5	0.6	0.6	0.3	0.8	1.2	0.8	0.9	0.3	0.5	0.5	0.5	0.6	0.7	0.4	0.3	0.5	0.4	0.5
Canada	0.9	0.6	0.8	0.7	0.6	0.6	0.6	1.0	0.7	0.5	0.4	0.4	0.5	0.5	0.8	0.5	0.4	0.6	0.6	1.0	0.5
Oth.Pacific	4.2	3.5	4.5	4.3	5.5	9.9	5.2	7.4	7.1	7.3	4.6	5.9	3.1	5.2	4.0	2.6	2.0	3.2	2.9	3.6	3.4
Vanuatu	3.4	3.9	5.2	3.8	4.0	2.8	3.0	3.2	3.2	2.0	1.6	1.4	1.9	1.7	1.1	1.8	2.0	2.7	2.0	2.4	1.9
Hong Kong	0.2	0.1	-	0.1	1.1	0.1	0.3	-	0.4	0.1	0.2	0.1	-	0.1	0.2	-	0.4	0.1	0.2	0.2	0.2
Fiji	5.8	3.1	5.0	5.2	5.4	4.8	5.2	4.1	4.8	5.3	5.6	5.2	4.1	5.0	4.9	5.8	4.4	4.4	4.8	5.1	5.9
Other Asia	8.1	7.0	8.4	9.2	10.2	8.5	6.4	6.6	7.7	7.5	9.7	6.8	6.9	7.7	11.9	10.0	8.1	6.3	8.9	9.5	9.5
Netherlands	0.2	2.8	0.4	0.9	0.2	0.1	0.2	0.4	0.2	0.3	0.3	0.2	0.3	0.3	0.3	0.2	0.3	0.3	0.3	0.4	0.2
Oth.Europe	1.5	3.5	2.0	2.1	2.5	1.9	2.8	2.3	2.4	2.9	1.2	2.1	2.0	2.0	1.9	1.3	1.6	1.2	1.5	1.2	1.1
France	0.3	0.4	0.4	0.3	0.3	0.5	0.8	0.6	0.6	0.4	0.1	0.6	0.6	0.4	0.3	0.5	0.4	0.4	0.4	0.2	0.4
Italy	0.2	0.6	0.8	0.5	0.1	0.1	0.4	0.2	0.2	0.3	0.1	0.5	0.6	0.4	0.1	0.1	0.2	0.4	0.2	0.3	0.3
Oth.Country	1.4	0.5	1.1	1.1	0.5	0.4	1.1	1.2	0.9	1.1	0.9	1.4	1.2	1.1	1.8	1.4	1.2	1.1	1.3	1.3	1.0
<b>Total</b>	<b>100</b>	<b>100</b>	<b>100</b>	<b>100</b>	<b>100</b>	<b>100</b>	<b>100</b>	<b>100</b>	<b>100</b>	<b>100</b>	<b>100</b>	<b>100</b>	<b>100</b>	<b>100</b>	<b>100</b>	<b>100</b>	<b>100.0</b>	<b>100.0</b>	<b>100.0</b>	<b>100.0</b>	<b>100.0</b>

Chart 2: Visitor Arrivals by Country of residence by quarter, 2nd quarter 2011

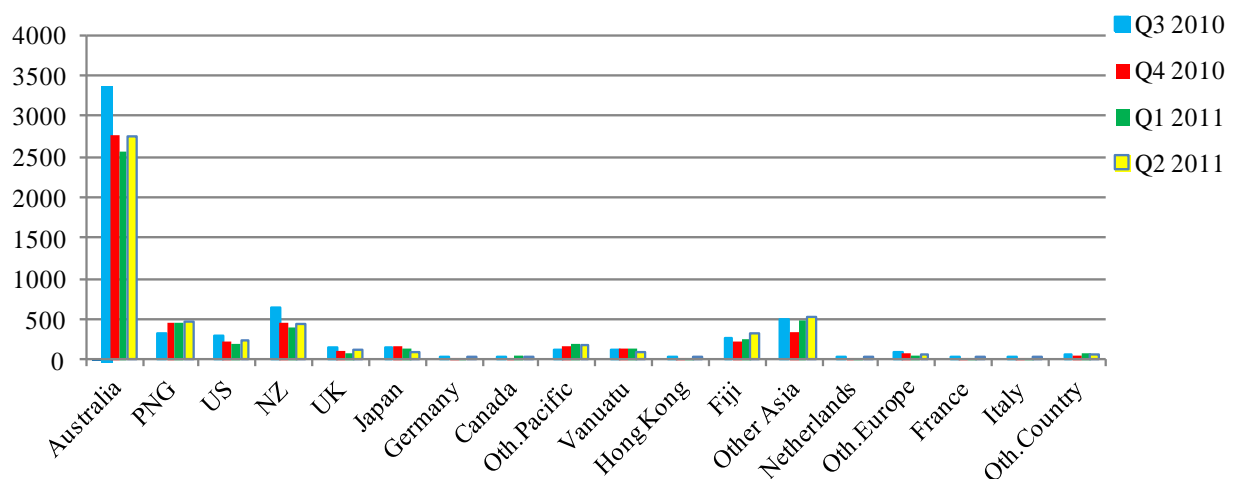


Table 3: Visitor Arrivals by Month: 2006 – 2<sup>nd</sup> Quarter 2011

Month	2006	2007	2008	2009	2010	2011
January	952	546	889	1,602	1,235	1600
February	838	1,020	1,282	1,422	1,209	1658
March	972	1,251	802	1,249	1,766	1861
April	994	1,452	1,388	1,499	1,820	1736
May	858	1,137	1,261	1,393	1,137	1760
June	1,289	1,265	1,552	1,724	1,797	2009
July	865	822	1,692	1,603	2,264	
August	892	1,299	1,469	1,520	1,845	
September	681	1,299	1,457	1,659	2,153	
October	942	1,260	1,399	1,709	1,813	
November	1,118	1,246	1,545	1,475	1,624	
December	1,081	1,151	1,528	1,405	1,858	
<b>Total</b>	<b>11,482</b>	<b>13,748</b>	<b>16,264</b>	<b>18,260</b>	<b>22,531</b>	<b>10,624</b>
Percentage						
January	8.3	4.0	5.5	8.8	5.5	15.1
February	7.3	7.4	7.9	7.8	5.4	15.6
March	8.5	9.1	4.9	6.8	7.8	17.5
April	8.7	10.6	8.5	8.2	8.1	16.3
May	7.5	8.3	7.8	7.6	5.0	16.6
June	11.2	9.2	9.5	9.4	8.0	18.9
July	7.5	6.0	10.4	8.8	10.0	
August	7.8	9.4	9.0	8.3	8.2	
September	5.9	9.4	9.0	9.1	9.6	
October	8.2	9.2	8.6	9.4	8.0	
November	9.7	9.1	9.5	8.1	7.2	
December	9.4	8.4	9.4	7.7	8.2	
<b>Total</b>	<b>100</b>	<b>100.0</b>	<b>100.0</b>	<b>100.0</b>	<b>100.0</b>	<b>100.0</b>

Chart 3: Visitors Arrival by month, 2007 - 2nd quarter 2011

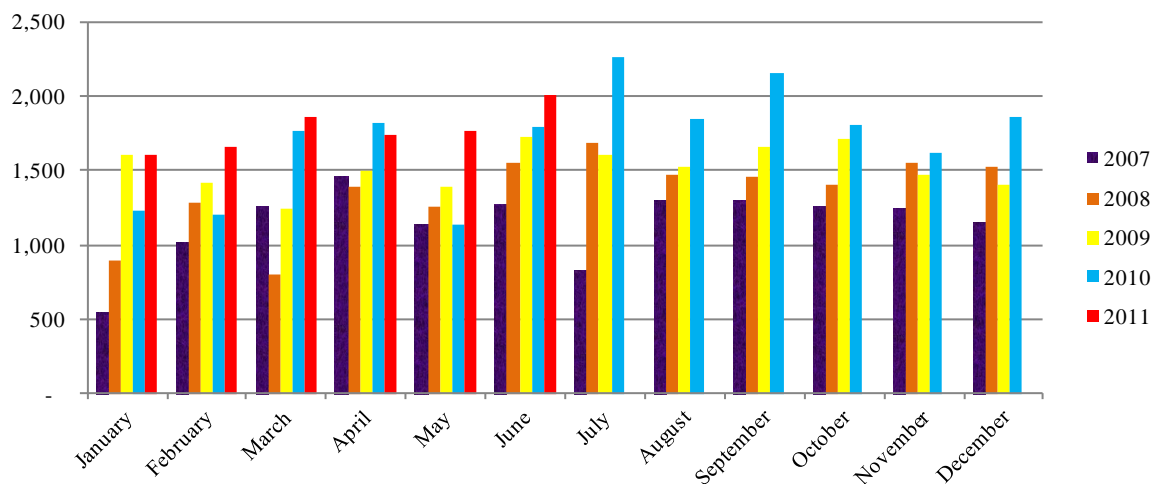




Table 4: Visitors, classified as tourists by Country of residence by year, quarter and average length of stay: 3<sup>rd</sup> Quarter 2008 – 2<sup>nd</sup> Quarter 2011

Country of Usual Residence	2008				2009								2010								2011			
	Quarter 3		Quarter 4		Quarter 1		Quarter 2		Quarter 3		Quarter 4		Quarter 1		Quarter 2		Quarter 3		Quarter 4		Quarter 1		Quarter 2	
	tourist	day	tourist	day	tourist	day	tourist	day	tourist	day	tourist	day	tourist	day	tourist	day	tourist	day	tourist	day	tourist	day	tourist	day
Australia	732	14	746	15	546	12	768	13	878	14	724	15	558	13	756	11	1,010	12	854	15	611	14	872	13
PNG	42	12	54	21	24	13	36	11	35	13	62	33	46	22	41	11	36	15	60	27	34	13	53	15
US	223	12	235	14	75	10	95	16	163	13	141	14	46	16	122	11	166	12	114	13	91	11	104	16
NZ	95	12	107	22	33	14	41	14	99	17	41	23	17	18	62	14	140	14	65	19	29	23	56	15
UK	44	23	67	13	44	16	38	27	52	28	37	25	24	18	48	19	72	23	54	13	26	19	49	25
Japan	101	10	111	8	61	7	56	7	84	11	286	5	45	8	23	5	56	12	94	6	45	12	24	10
Germany	23	7	30	17	21	26	6	9	15	14	18	27	17	16	23	13	13	17	13	14	15	35	12	13
Canada	20	13	33	14	5	25	6	24	9	29	11	13	14	18	8	33	7	12	11	14	27	17	8	23
Oth.Pacific	48	10	58	13	68	10	17	8	84	14	29	18	22	16	8	7	16	12	23	27	19	15	14	12
Vanuatu	20	13	33	28	1	10	7	13	-	-	-	10	4	9	9	15	10	18	12	14	20	15	13	14
Hong Kong	6	9	15	7	0	-	6	12	-	-	-	20	3	15	-	-	8	10	2	3	5	5	7	8
Fiji	16	6	22	22	6	16	13	7	8	7	19	-	9	23	10	25	15	31	21	29	15	13	23	18
Oth.Asia	87	21	108	19	61	17	88	24	78	22	61	30	78	20	106	19	126	13	107	23	127	20	103	25
Netherlands	2	14	16	12	4	20	6	44	6	18	10	15	5	8	4	15	6	15	5	7	6	34	5	18
Oth.Europe	55	15	70	13	74	11	18	22	50	12	53	19	48	22	33	17	72	16	34	16	35	18	32	14
France	21	17	38	12	14	11	2	17	11	19	16	14	6	12	13	23	9	16	8	21	4	28	5	17
Italy	14	11	25	5	5	28	2	12	19	14	15	43	2	12	1	8	11	17	5	52	5	22	5	10
Oth.Country	13	26	39	10	5	5	12	20	23	12	12	11	21	22	15	9	24	14	14	18	23	12	14	21
<b>Total</b>	<b>1,562</b>	<b>14</b>	<b>1,807</b>	<b>15</b>	<b>1,047</b>	<b>13</b>	<b>1,217</b>	<b>15</b>	<b>1,614</b>	<b>15</b>	<b>1,550</b>	<b>15</b>	<b>965</b>	<b>15</b>	<b>1,282</b>	<b>12</b>	<b>1,797</b>	<b>13</b>	<b>1,496</b>	<b>18</b>	<b>1,137</b>	<b>16</b>	<b>1,399</b>	<b>15</b>

Chart 4: Tourist Arrivals by Country of Residence, 2nd Quarter 2011

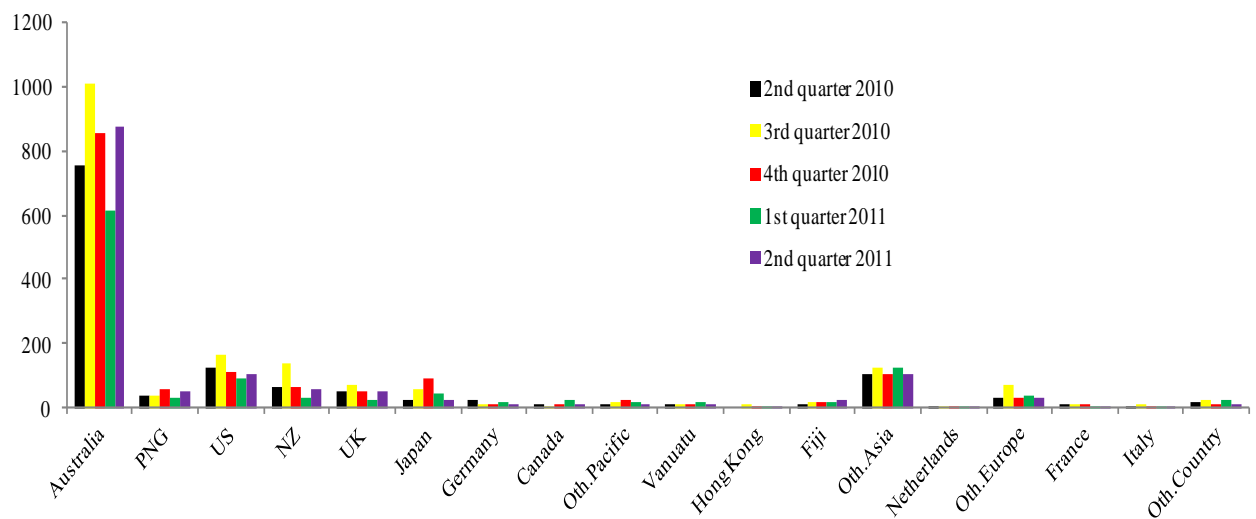


Table 5: Visitor Arrivals by Country of Residence by Purpose of Visit by sex: 2<sup>nd</sup> Quarter 2011

Country of Usual Residence	Business & Conference			Holiday & Vocation			Transit & Stopover			Visit friends/Relatives			Other			Total			
	M	F	T	M	F	T	M	F	T	M	F	T	M	F	T	M	F	All	
Australia	675	158	833	547	325	872	22	4	26	212	175	387	508	137	645	1,964	799	2,763	
PNG	182	21	203	32	21	53	10	2	12	25	14	39	162	10	172	411	68	479	
US	71	24	95	55	49	104	1	-	1	12	9	21	14	8	22	153	90	243	
NZ	192	44	236	38	18	56	9	2	11	26	26	52	67	11	78	332	101	433	
UK	35	7	42	20	29	49	-	-	-	3	4	7	5	7	12	63	47	110	
Japan	62	2	64	18	6	24	-	-	-	4	3	7	10	1	11	94	12	106	
Germany	7	3	10	9	3	12	-	-	-	3	-	3	1	-	1	20	6	26	
Canada	10	3	13	4	4	8	-	-	-	2	2	4	4	1	5	20	10	30	
Oth.Pacific	101	29	130	8	6	14	6	-	6	7	4	11	16	8	24	138	47	185	
Vanuatu	47	21	68	8	5	13	2	1	3	6	5	11	7	1	8	70	33	103	
Hong Kong	3	-	3	6	1	7	-	-	-	2	-	2	-	-	-	11	1	12	
Fiji	163	65	228	13	10	23	-	-	-	17	11	28	40	8	48	233	94	327	
Oth.Asia	229	30	259	82	21	103	5	-	5	48	10	58	78	20	98	442	81	523	
Netherlands	7	-	7	4	1	5	-	-	-	-	-	-	1	-	1	12	1	13	
Oth.Europe	19	3	22	18	14	32	-	-	-	1	2	3	3	2	5	41	21	62	
France	7	2	9	5	-	5	1	-	1	1	-	1	2	2	4	16	4	20	
Italy	2	2	4	2	3	5	-	-	-	4	3	7	-	1	1	8	9	17	
Oth.Country	18	6	24	12	2	14	-	-	-	2	1	3	11	1	12	43	10	53	
<b>Total</b>	<b>1,830</b>	<b>420</b>	<b>2,250</b>	<b>881</b>	<b>518</b>	<b>1,399</b>	<b>56</b>	<b>9</b>	<b>65</b>	<b>375</b>	<b>269</b>	<b>644</b>	<b>929</b>	<b>218</b>	<b>1,147</b>	<b>4,071</b>	<b>1,434</b>	<b>5,505</b>	
<b>Percentage</b>																			
Australia	24.4	5.7	30.1	19.8	11.8	31.6	0.8	0.1	0.9	7.7	6.3	14.0	18.4	5.0	23.3	71.1	28.9	100.0	
PNG	38.0	4.4	42.4	6.7	4.4	11.1	2.1	0.4	2.5	5.2	2.9	8.1	33.8	2.1	35.9	85.8	14.2	100.0	
US	29.2	9.9	39.1	22.6	20.2	42.8	0.4	-	0.4	4.9	3.7	8.6	5.8	3.3	9.1	63.0	37.0	100.0	
NZ	44.3	10.2	54.5	8.8	4.2	12.9	2.1	0.5	2.5	6.0	6.0	12.0	15.5	2.5	18.0	76.7	23.3	100.0	
UK	31.8	6.4	38.2	18.2	26.4	44.5	-	-	-	2.7	3.6	6.4	4.5	6.4	10.9	57.3	42.7	100.0	
Japan	58.5	1.9	60.4	17.0	5.7	22.6	-	-	-	3.8	2.8	6.6	9.4	0.9	10.4	88.7	11.3	100.0	
Germany	26.9	11.5	38.5	34.6	11.5	46.2	-	-	-	11.5	-	11.5	3.8	-	3.8	76.9	23.1	100.0	
Canada	33.3	10.0	43.3	13.3	13.3	26.7	-	-	-	6.7	6.7	13.3	13.3	3.3	16.7	66.7	33.3	100.0	
Oth.Pacific	54.6	15.7	70.3	4.3	3.2	7.6	3.2	-	3.2	3.8	2.2	5.9	8.6	4.3	13.0	74.6	25.4	100.0	
Vanuatu	45.6	20.4	66.0	7.8	4.9	12.6	1.9	1.0	2.9	5.8	4.9	10.7	6.8	1.0	7.8	68.0	32.0	100.0	
Hong Kong	25.0	-	25.0	50.0	8.3	58.3	-	-	-	16.7	-	16.7	-	-	-	91.7	8.3	100.0	
Fiji	49.8	19.9	69.7	4.0	3.1	7.0	-	-	-	5.2	3.4	8.6	12.2	2.4	14.7	71.3	28.7	100.0	
Oth.Asia	43.8	5.7	49.5	15.7	4.0	19.7	1.0	-	1.0	9.2	1.9	11.1	14.9	3.8	18.7	84.5	15.5	100.0	
Netherlands	53.8	-	53.8	30.8	7.7	38.5	-	-	-	-	-	-	7.7	-	7.7	92.3	7.7	100.0	
Oth.Europe	30.6	4.8	35.5	29.0	22.6	51.6	-	-	-	1.6	3.2	4.8	4.8	3.2	8.1	66.1	33.9	100.0	
France	35.0	10.0	45.0	25.0	-	25.0	5.0	-	5.0	5.0	-	5.0	10.0	10.0	20.0	80.0	20.0	100.0	
Italy	11.8	11.8	23.5	11.8	17.6	29.4	-	-	-	23.5	17.6	41.2	-	5.9	5.9	47.1	52.9	100.0	
Oth.Country	34.0	11.3	45.3	22.6	3.8	26.4	-	-	-	3.8	1.9	5.7	20.8	1.9	22.6	81.1	18.9	100.0	
<b>Total</b>	<b>33.2</b>	<b>7.6</b>	<b>40.9</b>	<b>16.0</b>	<b>9.4</b>	<b>25.4</b>	<b>1.0</b>	<b>0.2</b>	<b>1.2</b>	<b>6.8</b>	<b>4.9</b>	<b>11.7</b>	<b>16.9</b>	<b>4.0</b>	<b>20.8</b>	<b>74.0</b>	<b>26.0</b>	<b>100.0</b>	

Chart 5: Visitors Arrival by Country of Residence by Purpose of Visit, 2nd quarter 2011

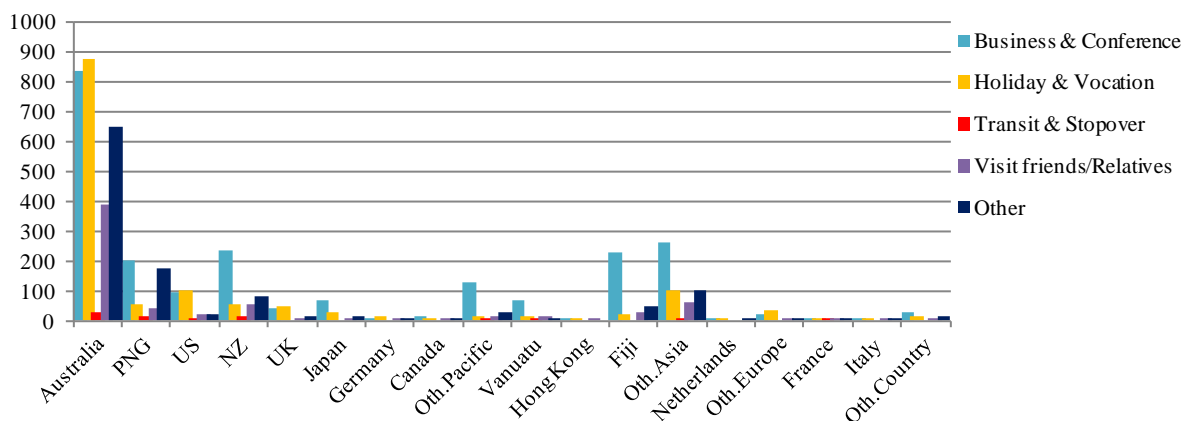


Table 6: Visitor Arrivals by Country of Residence by Age Groups by Sex: 2<sup>nd</sup> Quarter 2011

Country of Usual Residence	Age-Group																		Total
	0-14		15-24		25-34		35-44		45-54		55-64		65+		Not Stated				
	M	F	M	F	M	F	M	F	M	F	M	F	M	F	M	F			
Australia	75	58	157	100	291	132	443	153	432	160	373	124	117	38	76	34	1,964	799	2,763
PNG	5	5	15	10	94	17	122	20	95	13	59	1	6	-	15	2	411	68	479
US	6	3	14	13	15	8	25	17	33	13	34	24	17	8	9	4	153	90	243
NZ	5	6	24	8	49	20	56	21	87	20	83	13	17	5	11	8	332	101	433
UK	-	4	6	8	13	17	12	5	9	5	16	3	5	4	2	1	63	47	110
Japan	-	-	2	1	13	1	25	5	26	1	22	3	5	1	1	-	94	12	106
Germany	1	-	2	2	5	2	1	1	4	-	3	1	3	-	1	-	20	6	26
Canada	1	2	2	2	-	1	7	2	4	-	5	1	1	1	-	1	20	10	30
Oth.Pacific	5	1	5	3	16	12	37	17	34	7	26	4	10	2	5	1	138	47	185
Vanuatu	-	-	5	1	10	10	23	12	15	9	11	-	3	-	3	1	70	33	103
Hong Kong	-	-	-	-	1	-	2	-	4	1	3	-	1	-	-	-	11	1	12
Fiji	2	-	14	11	44	21	60	21	67	27	36	12	6	2	4	-	233	94	327
Oth.Asia	4	-	29	6	92	29	124	22	111	13	60	6	16	1	6	4	442	81	523
Netherlands	-	-	1	-	2	1	5	-	3	-	1	-	-	-	-	-	12	1	13
Oth.Europe	2	1	7	2	13	8	6	3	7	3	3	2	2	-	1	2	41	21	62
France	-	-	2	-	2	1	4	1	6	1	1	-	1	1	-	-	16	4	20
Italy	-	-	-	-	2	3	1	3	2	2	2	-	1	1	-	-	8	9	17
Oth.Country	-	-	-	-	9	3	14	3	12	2	5	2	3	-	-	-	43	10	53
<b>Total</b>	<b>106</b>	<b>80</b>	<b>285</b>	<b>167</b>	<b>671</b>	<b>286</b>	<b>967</b>	<b>306</b>	<b>951</b>	<b>277</b>	<b>743</b>	<b>196</b>	<b>214</b>	<b>64</b>	<b>134</b>	<b>58</b>	<b>4,071</b>	<b>1,434</b>	<b>5,505</b>
	<b>Percentage</b>																		
Australia	2.7	2.1	5.7	3.6	10.5	4.8	16.0	5.5	15.6	5.8	13.5	4.5	4.2	1.4	2.8	1.2	71.1	28.9	100.0
PNG	1.0	1.0	3.1	2.1	19.6	3.5	25.5	4.2	19.8	2.7	12.3	0.2	1.3	-	3.1	0.4	85.8	14.2	100.0
US	2.5	1.2	5.8	5.3	6.2	3.3	10.3	7.0	13.6	5.3	14.0	9.9	7.0	3.3	3.7	1.6	63.0	37.0	100.0
NZ	1.2	1.4	5.5	1.8	11.3	4.6	12.9	4.8	20.1	4.6	19.2	3.0	3.9	1.2	2.5	1.8	76.7	23.3	100.0
UK	-	3.6	5.5	7.3	11.8	15.5	10.9	4.5	8.2	4.5	14.5	2.7	4.5	3.6	1.8	0.9	57.3	42.7	100.0
Japan	-	-	1.9	0.9	12.3	0.9	23.6	4.7	24.5	0.9	20.8	2.8	4.7	0.9	0.9	-	88.7	11.3	100.0
Germany	3.8	-	7.7	7.7	19.2	7.7	3.8	3.8	15.4	-	11.5	3.8	11.5	-	3.8	-	76.9	23.1	100.0
Canada	3.3	6.7	6.7	6.7	-	3.3	23.3	6.7	13.3	-	16.7	3.3	3.3	3.3	-	3.3	66.7	33.3	100.0
Oth.Pacific	2.7	0.5	2.7	1.6	8.6	6.5	20.0	9.2	18.4	3.8	14.1	2.2	5.4	1.1	2.7	0.5	74.6	25.4	100.0
Vanuatu	-	-	4.9	1.0	9.7	9.7	22.3	11.7	14.6	8.7	10.7	-	2.9	-	2.9	1.0	68.0	32.0	100.0
Hong Kong	-	-	-	-	8.3	-	16.7	-	33.3	8.3	25.0	-	8.3	-	-	-	91.7	8.3	100.0
Fiji	0.6	-	4.3	3.4	13.5	6.4	18.3	6.4	20.5	8.3	11.0	3.7	1.8	0.6	1.2	-	71.3	28.7	100.0
Oth.Asia	0.8	-	5.5	1.1	17.6	5.5	23.7	4.2	21.2	2.5	11.5	1.1	3.1	0.2	1.1	0.8	84.5	15.5	100.0
Netherlands	-	-	7.7	-	15.4	7.7	38.5	-	23.1	-	7.7	-	-	-	-	-	92.3	7.7	100.0
Oth.Europe	3.2	1.6	11.3	3.2	21.0	12.9	9.7	4.8	11.3	4.8	4.8	3.2	3.2	-	1.6	3.2	66.1	33.9	100.0
France	-	-	10.0	-	10.0	5.0	20.0	5.0	30.0	5.0	5.0	-	5.0	5.0	-	-	80.0	20.0	100.0
Italy	-	-	-	-	11.8	17.6	5.9	17.6	11.8	11.8	11.8	-	5.9	5.9	-	-	47.1	52.9	100.0
Oth.Country	-	-	-	-	17.0	5.7	26.4	5.7	22.6	3.8	9.4	3.8	5.7	-	-	-	81.1	18.9	100.0
<b>Total</b>	<b>1.9</b>	<b>1.5</b>	<b>5.2</b>	<b>3.0</b>	<b>12.2</b>	<b>5.2</b>	<b>17.6</b>	<b>5.6</b>	<b>17.3</b>	<b>5.0</b>	<b>13.5</b>	<b>3.6</b>	<b>3.9</b>	<b>1.2</b>	<b>2.4</b>	<b>1.1</b>	<b>74.0</b>	<b>26.0</b>	<b>100.0</b>

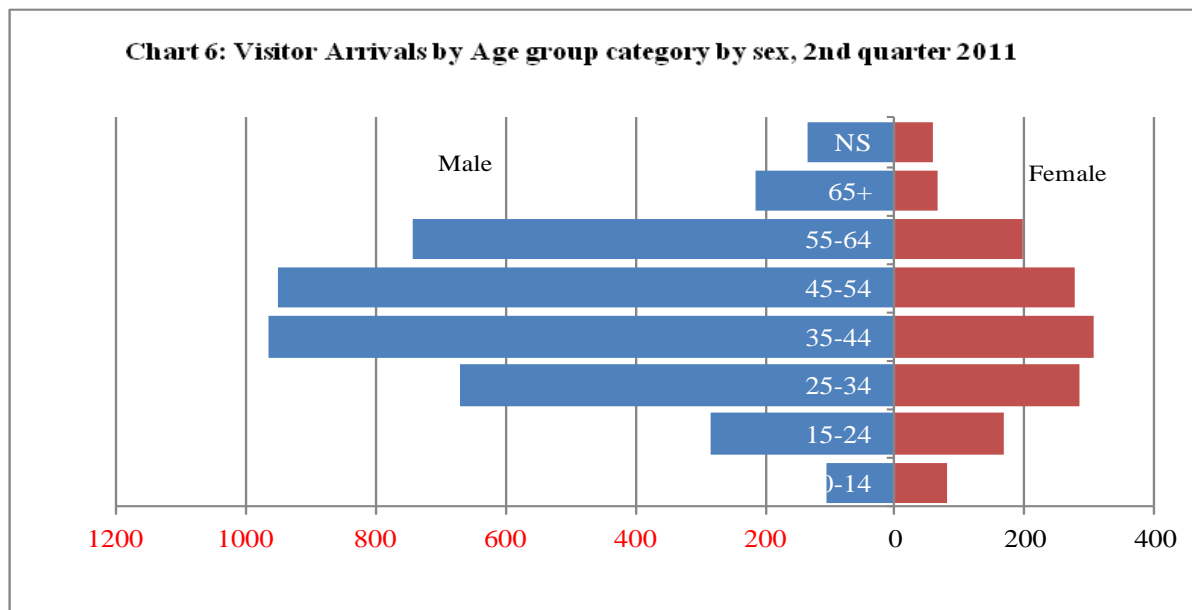


Table 7: Visitor Arrivals by Country of Residence by Occupation and Sex: 2<sup>nd</sup> Quarter 2011

Country of Usual Residence	Professional and Technical		Administration and Managerial		Clerical & Related Work		Sales Worker		Service Worker		Agriculture Forestry Fishery		Production & Related Work		Other		No Work		Total		
	M	F	M	F	M	F	M	F	M	F	M	F	M	F	M	F	M	F	M	F	All
Australia	665	315	288	61	5	19	21	4	120	67	42	2	175	2	531	255	117	74	1,964	799	2,763
PNG	110	28	56	6	3	-	2	1	7	3	14	-	38	1	170	27	11	2	411	68	479
US	72	44	5	3	10	5	2	-	1	2	-	-	3	-	43	22	17	14	153	90	243
NZ	97	28	63	13	3	2	3	-	20	6	5	-	10	-	123	42	8	10	332	101	433
UK	27	24	6	2	3	1	1	-	2	2	1	-	1	-	20	13	2	5	63	47	110
Japan	37	5	7	-	2	-	5	-	1	2	-	-	2	-	34	4	6	1	94	12	106
Germany	8	1	2	-	-	-	-	-	1	-	-	-	-	-	8	5	1	-	20	6	26
Canada	6	3	2	3	-	-	1	-	1	-	-	-	-	-	7	-	3	4	20	10	30
Oth.Pacific	47	13	8	2	4	1	3	-	4	6	2	-	4	-	62	23	4	2	138	47	185
Vanuatu	27	10	5	2	2	1	1	-	2	8	2	-	1	-	27	11	3	1	70	33	103
Hong Kong	1	-	1	-	-	-	2	-	-	1	-	-	-	-	5	-	2	-	11	1	12
Fiji	75	26	20	12	3	4	3	1	30	4	13	-	1	1	84	39	4	7	233	94	327
Oth.Asia	54	18	56	6	5	3	76	4	1	6	10	1	32	1	159	30	49	12	442	81	523
Netherlands	8	1	1	-	-	-	-	-	-	-	-	-	1	-	2	-	-	-	12	1	13
Oth.Europe	19	8	1	4	-	1	2	-	-	1	-	-	2	-	15	6	2	1	41	21	62
France	7	1	1	-	-	1	-	-	-	-	-	-	-	-	8	1	-	1	16	4	20
Italy	5	3	-	-	-	1	-	-	-	1	-	-	-	-	2	3	1	1	8	9	17
Oth.Country	17	4	2	2	-	-	2	-	-	2	-	-	1	-	21	2	-	-	43	10	53
Total	1282	532	524	116	40	39	124	10	190	111	89	3	271	5	1321	483	230	135	4,071	1,434	5,505
Percentage																					
Australia	24.1	11.4	10.4	2.2	0.2	0.7	0.8	0.1	4.3	2.4	1.5	0.1	6.3	0.1	19.2	9.2	4.2	2.7	71.1	28.9	100.0
PNG	23.0	5.8	11.7	1.3	0.6	-	0.4	0.2	1.5	0.6	2.9	-	7.9	0.2	35.5	5.6	2.3	0.4	85.8	14.2	100.0
US	29.6	18.1	2.1	1.2	4.1	2.1	0.8	-	0.4	0.8	-	-	1.2	-	17.7	9.1	7.0	5.8	63.0	37.0	100.0
NZ	22.4	6.5	14.5	3.0	0.7	0.5	0.7	-	4.6	1.4	1.2	-	2.3	-	28.4	9.7	1.8	2.3	76.7	23.3	100.0
UK	24.5	21.8	5.5	1.8	2.7	0.9	0.9	-	1.8	1.8	0.9	-	0.9	-	18.2	11.8	1.8	4.5	57.3	42.7	100.0
Japan	34.9	4.7	6.6	-	1.9	-	4.7	-	0.9	1.9	-	-	1.9	-	32.1	3.8	5.7	0.9	88.7	11.3	100.0
Germany	30.8	3.8	7.7	-	-	-	-	-	3.8	-	-	-	-	-	30.8	19.2	3.8	-	76.9	23.1	100.0
Canada	20.0	10.0	6.7	10.0	-	-	3.3	-	3.3	-	-	-	-	-	23.3	-	10.0	13.3	66.7	33.3	100.0
Oth.Pacific	25.4	7.0	4.3	1.1	2.2	0.5	1.6	-	2.2	3.2	1.1	-	2.2	-	33.5	12.4	2.2	1.1	74.6	25.4	100.0
Vanuatu	26.2	9.7	4.9	1.9	1.9	1.0	1.0	-	1.9	7.8	1.9	-	1.0	-	26.2	10.7	2.9	1.0	68.0	32.0	100.0
Hong Kong	8.3	-	8.3	-	-	-	16.7	-	-	8.3	-	-	-	-	41.7	-	16.7	-	91.7	8.3	100.0
Fiji	22.9	8.0	6.1	3.7	0.9	1.2	0.9	0.3	9.2	1.2	4.0	-	0.3	0.3	25.7	11.9	1.2	2.1	71.3	28.7	100.0
Oth.Asia	10.3	3.4	10.7	1.1	1.0	0.6	14.5	0.8	0.2	1.1	1.9	0.2	6.1	0.2	30.4	5.7	9.4	2.3	84.5	15.5	100.0
Netherlands	61.5	7.7	7.7	-	-	-	-	-	-	-	-	-	7.7	-	15.4	-	-	-	92.3	7.7	100.0
Oth.Europe	30.6	12.9	1.6	6.5	-	1.6	3.2	-	-	1.6	-	-	3.2	-	24.2	9.7	3.2	1.6	66.1	33.9	100.0
France	35.0	5.0	5.0	-	-	5.0	-	-	-	-	-	-	-	-	40.0	5.0	-	5.0	80.0	20.0	100.0
Italy	29.4	17.6	-	-	-	5.9	-	-	-	5.9	-	-	-	-	11.8	17.6	5.9	5.9	47.1	52.9	100.0
Oth.Country	32.1	7.5	3.8	3.8	-	-	3.8	-	-	3.8	-	-	1.9	-	39.6	3.8	-	-	81.1	18.9	100.0
Total	23.3	9.7	9.5	2.1	0.7	0.7	2.3	0.2	3.5	2.0	1.6	0.1	4.9	0.1	24.0	8.8	4.2	2.5	74.0	26.0	100.0

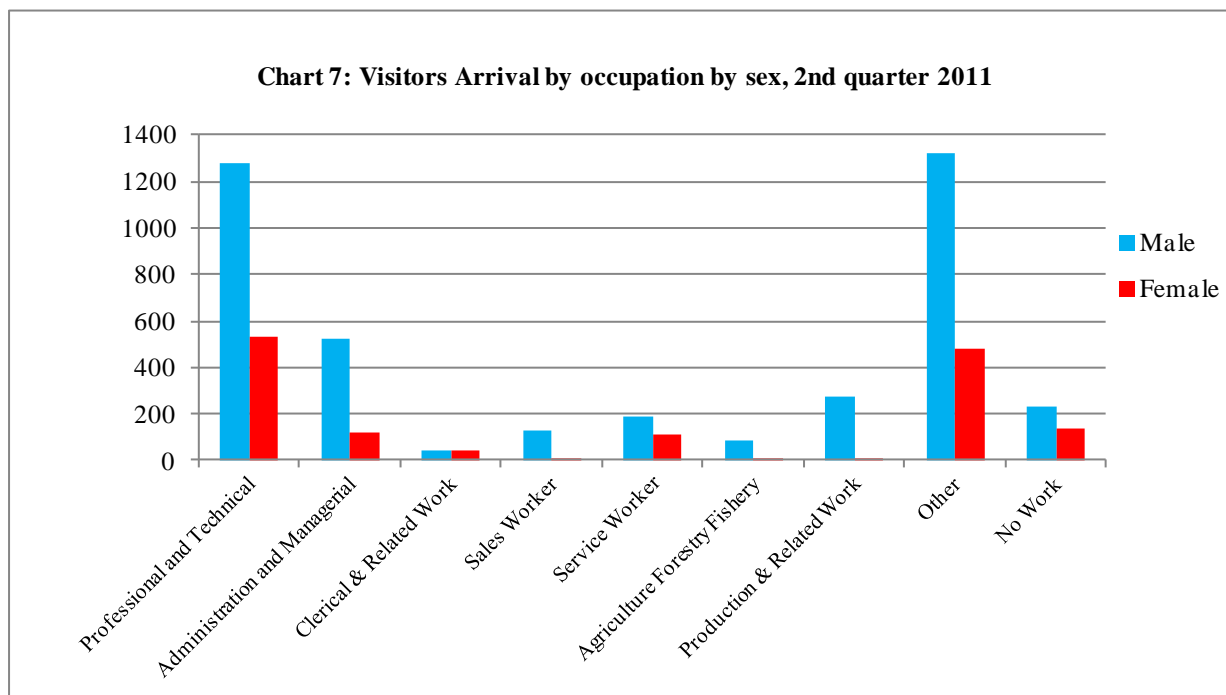
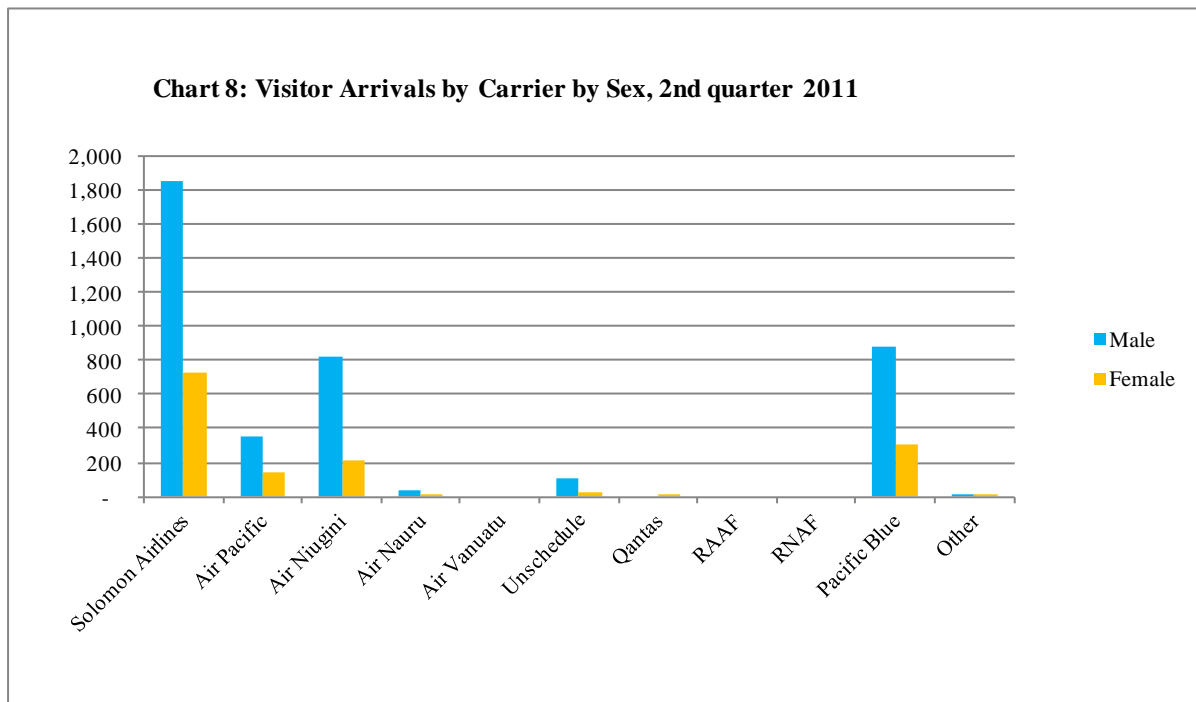


Table 8: Visitor Arrivals by Country of residence by Carrier by Sex: 2<sup>nd</sup> Quarter 2011

Country of Usual Residence	Solomon Airlines		Air Pacific		Air Niugini		Air Nauru		Air Vanuatu		Unschedule		Qantas		RAAF		RCAF		Other		Pacific Blue		Total		
	M	F	M	F	M	F	M	F	M	F	M	F	M	F	M	F	M	F	M	F	M	F	M	F	All
	Australia	1231	545	19	13	51	13	20	5	-	-	27	3	-	1	-	-	-	-	5	1	611	218	1,964	799
PNG	23	5	11	2	365	59	-	-	-	-	2	-	-	-	-	-	-	-	1	-	9	2	411	68	479
US	55	22	45	35	33	28	1	-	-	-	10	2	-	-	-	-	-	-	-	-	9	3	153	90	243
NZ	115	31	21	5	24	-	9	-	-	-	49	20	-	-	-	-	-	-	-	-	114	45	332	101	433
UK	40	27	2	9	7	4	-	-	-	-	1	-	-	-	-	-	-	-	1	13	6	63	47	110	
Japan	22	1	8	1	55	8	-	-	-	-	-	-	-	-	-	-	-	-	-	9	2	94	12	106	
Germany	10	2	3	1	6	3	-	-	-	-	-	-	-	-	-	-	-	-	-	1	-	20	6	26	
Canada	9	6	2	2	3	-	1	-	-	-	-	-	-	-	-	-	-	-	-	5	2	20	10	30	
Oth.Pacific	48	17	35	7	43	20	1	1	-	-	1	-	-	-	-	-	-	-	-	10	2	138	47	185	
Vanuatu	12	4	51	27	3	1	2	-	-	-	1	-	-	-	-	-	-	-	-	1	1	70	33	103	
Hong Kong	4	1	1	-	2	-	-	-	-	-	-	-	-	-	-	-	-	-	-	4	-	11	1	12	
Fiji	24	6	106	36	97	52	1	-	-	-	1	-	-	-	-	-	-	-	1	3	-	233	94	327	
Oth.Asia	213	40	26	4	112	18	-	-	-	-	6	1	-	-	-	-	-	-	-	85	18	442	81	523	
Netherlands	7	1	2	-	3	-	-	-	-	-	-	-	-	-	-	-	-	-	-	-	-	12	1	13	
Oth.Europe	21	13	10	1	5	3	-	1	-	-	2	1	-	-	-	-	-	-	-	3	2	41	21	62	
France	5	2	7	1	2	1	1	-	-	-	1	-	-	-	-	-	-	-	-	-	-	16	4	20	
Italy	3	4	2	1	2	1	-	-	-	-	-	-	-	-	-	-	-	-	-	1	3	8	9	17	
Oth.Country	19	5	6	2	10	3	-	-	-	-	3	-	-	-	-	-	-	-	-	5	-	43	10	53	
<b>Total</b>	<b>1,861</b>	<b>732</b>	<b>357</b>	<b>147</b>	<b>823</b>	<b>214</b>	<b>36</b>	<b>7</b>	<b>-</b>	<b>-</b>	<b>104</b>	<b>27</b>	<b>-</b>	<b>1</b>	<b>-</b>	<b>-</b>	<b>-</b>	<b>-</b>	<b>7</b>	<b>2</b>	<b>883</b>	<b>304</b>	<b>4,071</b>	<b>1,434</b>	<b>5,505</b>
	<b>Percentage</b>																								
Australia	44.6	19.7	0.7	0.5	1.8	0.5	0.7	0.2	-	-	1.0	0.1	-	-	-	-	-	-	0.2	-	22.1	7.9	71.1	28.9	100.0
PNG	4.8	1.0	2.3	0.4	76.2	12.3	-	-	-	-	0.4	-	-	-	-	-	-	-	0.2	-	1.9	0.4	85.8	14.2	100.0
US	22.6	9.1	18.5	14.4	13.6	11.5	0.4	-	-	-	4.1	0.8	-	-	-	-	-	-	-	-	3.7	1.2	63.0	37.0	100.0
NZ	26.6	7.2	4.8	1.2	5.5	-	2.1	-	-	-	11.3	4.6	-	-	-	-	-	-	-	-	26.3	10.4	76.7	23.3	100.0
UK	36.4	24.5	1.8	8.2	6.4	3.6	-	-	-	-	0.9	-	-	-	-	-	-	-	0.9	11.8	5.5	57.3	42.7	100.0	
Japan	20.8	0.9	7.5	0.9	51.9	7.5	-	-	-	-	-	-	-	-	-	-	-	-	-	8.5	1.9	88.7	11.3	100.0	
Germany	38.5	7.7	11.5	3.8	23.1	11.5	-	-	-	-	-	-	-	-	-	-	-	-	-	3.8	-	76.9	23.1	100.0	
Canada	30.0	20.0	6.7	6.7	10.0	-	3.3	-	-	-	-	-	-	-	-	-	-	-	-	16.7	6.7	66.7	33.3	100.0	
Oth.Pacific	25.9	9.2	18.9	3.8	23.2	10.8	0.5	0.5	-	-	0.5	-	-	-	-	-	-	-	-	5.4	1.1	74.6	25.4	100.0	
Vanuatu	11.7	3.9	49.5	26.2	2.9	1.0	1.9	-	-	-	1.0	-	-	-	-	-	-	-	-	1.0	1.0	68.0	32.0	100.0	
Hong Kong	33.3	8.3	8.3	-	16.7	-	-	-	-	-	0.0	-	-	-	-	-	-	-	-	33.3	-	91.7	8.3	100.0	
Fiji	7.3	1.8	32.4	11.0	29.7	15.9	0.3	-	-	-	0.3	-	-	-	-	-	-	-	0.3	0.9	-	71.3	28.7	100.0	
Oth.Asia	40.7	7.6	5.0	0.8	21.4	3.4	-	-	-	-	1.1	0.2	-	-	-	-	-	-	-	16.3	3.4	84.5	15.5	100.0	
Netherlands	53.8	7.7	15.4	-	23.1	-	-	-	-	-	-	-	-	-	-	-	-	-	-	-	-	92.3	7.7	100.0	
Oth.Europe	33.9	21.0	16.1	1.6	8.1	4.8	-	1.6	-	-	3.2	1.6	-	-	-	-	-	-	-	4.8	3.2	66.1	33.9	100.0	
France	25.0	10.0	35.0	5.0	10.0	5.0	5.0	-	-	-	5.0	-	-	-	-	-	-	-	-	-	-	80.0	20.0	100.0	
Italy	17.6	23.5	11.8	5.9	11.8	5.9	-	-	-	-	-	-	-	-	-	-	-	-	-	5.9	17.6	47.1	52.9	100.0	
Oth.Country	35.8	9.4	11.3	3.8	18.9	5.7	-	-	-	-	5.7	-	-	-	-	-	-	-	-	9.4	-	81.1	18.9	100.0	
<b>Total</b>	<b>33.8</b>	<b>13.3</b>	<b>6.5</b>	<b>2.7</b>	<b>15.0</b>	<b>3.9</b>	<b>0.7</b>	<b>0.1</b>	<b>-</b>	<b>-</b>	<b>1.9</b>	<b>0.5</b>	<b>-</b>	<b>-</b>	<b>-</b>	<b>-</b>	<b>-</b>	<b>-</b>	<b>0.1</b>	<b>-</b>	<b>16.0</b>	<b>5.5</b>	<b>74.0</b>	<b>26.0</b>	<b>100.0</b>



## Appendix 1

### Concepts and Definitions

Persons entering Solomon Islands classify themselves into three (3) categories; returning resident, intending resident, and visitor. The concepts and definitions of the various categories are as follows:

#### (i) *Returning residents*

- Solomon Islanders and non-Solomon Islanders who have left the country and are returning to continue their residence.
- Non Solomon Islanders includes resident permit holders and Diplomatic officials, and their immediate family members. This may also includes legal or official arrangements that fall out side of the above.

#### (ii) *Intending residents*

- Non-Solomon Islander who wish to take up residence in Solomon Islands.

#### (iii) *Visitors*

- Any traveller who is not a Solomon Islander and who purposely spend less time – at most a period of 120 days<sup>2</sup>, in the country and with the intention and purpose of visiting.
- *Tourist*
  - Visitors who further classify themselves stating their visit are purposely for '*holiday and vacation*'. This exclude, tourist arrivals by cruise ships.
  - Wife accompanying husband on business purpose is a private tourist unless also working.
  - *World Tourism Organization WTO definition of Tourism:*  
*It comprises the activities of persons travelling to and staying in places outside their usual environment for not more than a year for leisure, business and other purposes not related to the exercise of an activity remunerated from within the place visited*<sup>3</sup>.

#### ( iv) *Markets*

- *Country of Usual Residence*

---

<sup>2</sup> Solomon Islands 1993 Statistical Yearbook.

<sup>3</sup> Dimensions of Hospitality, Study guide 1. p17

Appendix 2

Table 9: Intending Resident Arrivals by Country of Residence by Occupation and Sex: 2<sup>nd</sup> Quarter 2011

Country of Usual Residence	Professional and Technical		Administration and Managerial		Clerical & Related Work		Sales Worker		Service Worker		Agriculture Forestry Fishery		Production & Related Work		Other		No Work		Total		
	M	F	M	F	M	F	M	F	M	F	M	F	M	F	M	F	M	F	M	F	All
Australia	25	18	15	5	2	1	-	-	45	15	1	-	6	-	58	44	11	13	163	96	259
PNG	4	4	4	1	2	-	-	-	6	2	-	-	2	-	11	-	1	1	30	8	38
US	4	-	1	1	-	-	-	-	-	1	-	-	1	-	1	4	1	2	8	8	16
NZ	14	5	4	-	-	-	-	-	13	4	-	-	1	-	12	11	3	6	47	26	73
UK	1	2	1	1	-	-	-	-	-	-	-	-	1	-	4	-	1	-	8	3	11
Japan	4	1	3	-	-	-	-	-	-	-	-	-	-	-	4	3	-	1	11	5	16
Germany	-	-	-	-	-	-	-	-	-	1	-	-	-	-	-	1	-	-	-	2	2
Canada	-	-	-	-	-	-	-	-	-	1	-	-	-	-	2	-	-	-	2	1	3
Oth.Pacific	4	2	3	1	-	-	-	1	16	4	-	-	-	-	7	1	2	1	32	10	42
Vanuatu	3	4	-	-	-	-	-	-	5	2	-	-	2	-	1	-	4	2	15	8	23
Hong Kong	0	-	-	-	-	-	-	-	-	-	-	-	-	-	-	-	-	-	-	-	-
Fiji	20	4	5	1	-	-	-	-	6	6	-	-	1	-	8	4	1	-	41	15	56
Oth.Asia	28	11	48	12	3	-	24	1	6	13	29	5	49	-	122	13	34	14	343	69	412
Netherlands	-	-	-	-	-	-	-	-	-	-	-	-	-	-	-	-	-	-	-	-	-
Oth.Europe	-	1	-	-	-	-	-	-	-	-	-	-	-	-	1	-	-	-	1	1	2
France	-	2	-	-	-	-	-	-	-	-	-	-	-	-	-	-	-	-	-	2	2
Italy	1	-	-	-	-	-	-	-	-	1	-	-	-	-	-	-	-	-	1	1	2
Oth.Country	-	2	1	-	-	-	-	-	-	-	-	-	4	-	8	1	1	-	14	3	17
<b>Total</b>	<b>108</b>	<b>56</b>	<b>85</b>	<b>22</b>	<b>7</b>	<b>1</b>	<b>24</b>	<b>2</b>	<b>97</b>	<b>50</b>	<b>30</b>	<b>5</b>	<b>67</b>	<b>0</b>	<b>239</b>	<b>82</b>	<b>59</b>	<b>40</b>	<b>716</b>	<b>258</b>	<b>974</b>
	<b>Percentage</b>																				
Australia	9.7	6.9	5.8	1.9	0.8	0.4	-	-	17.4	5.8	0.4	-	2.3	-	22.4	17.0	4.2	5.0	62.9	37.1	100.0
PNG	10.5	10.5	10.5	2.6	5.3	-	-	-	15.8	5.3	-	-	5.3	-	28.9	-	2.6	2.6	78.9	21.1	100.0
US	25.0	-	6.3	6.3	-	-	-	-	-	6.3	-	-	6.3	-	6.3	25.0	6.3	12.5	50.0	50.0	100.0
NZ	19.2	6.8	5.5	-	-	-	-	-	17.8	5.5	-	-	1.4	-	16.4	15.1	4.1	8.2	64.4	35.6	100.0
UK	9.1	18.2	9.1	9.1	-	-	-	-	-	-	-	-	9.1	-	36.4	-	9.1	-	72.7	27.3	100.0
Japan	25.0	6.3	18.8	-	-	-	-	-	-	-	-	-	-	-	25.0	18.8	-	6.3	68.8	31.3	100.0
Germany	-	-	-	-	-	-	-	-	-	50.0	-	-	-	-	-	50.0	-	-	-	100.0	100.0
Canada	-	-	-	-	-	-	-	-	-	33.3	-	-	-	-	66.7	-	-	-	66.7	33.3	100.0
Oth.Pacific	9.5	4.8	7.1	2.4	-	-	-	2.4	38.1	9.5	-	-	-	-	16.7	2.4	4.8	2.4	76.2	23.8	100.0
Vanuatu	13.0	17.4	-	-	-	-	-	-	21.7	8.7	-	-	8.7	-	4.3	-	17.4	8.7	65.2	34.8	100.0
Hong Kong	-	-	-	-	-	-	-	-	-	-	-	-	-	-	-	-	-	-	-	-	-
Fiji	35.7	7.1	8.9	1.8	-	-	-	-	10.7	10.7	-	-	1.8	-	14.3	7.1	1.8	-	73.2	26.8	100.0
Oth.Asia	6.8	2.7	11.7	2.9	0.7	-	5.8	0.2	1.5	3.2	7.0	1.2	11.9	-	29.6	3.2	8.3	3.4	83.3	16.7	100.0
Netherlands	-	-	-	-	-	-	-	-	-	-	-	-	-	-	-	-	-	-	-	-	-
Oth.Europe	-	50.0	-	-	-	-	-	-	-	-	-	-	-	-	50.0	-	-	-	50.0	50.0	100.0
France	-	100.0	-	-	-	-	-	-	-	-	-	-	-	-	-	-	-	-	-	100.0	100.0
Italy	50.0	-	-	-	-	-	-	-	-	50.0	-	-	-	-	-	-	-	-	50.0	50.0	100.0
Oth.Country	-	11.8	5.9	-	-	-	-	-	-	-	-	-	23.5	-	47.1	5.9	5.9	-	82.4	17.6	100.0
<b>Total</b>	<b>11.1</b>	<b>5.7</b>	<b>8.7</b>	<b>2.3</b>	<b>0.7</b>	<b>0.1</b>	<b>2.5</b>	<b>0.2</b>	<b>10.0</b>	<b>5.1</b>	<b>3.1</b>	<b>0.5</b>	<b>6.9</b>	<b>0.0</b>	<b>24.5</b>	<b>8.4</b>	<b>6.1</b>	<b>4.1</b>	<b>73.5</b>	<b>26.5</b>	<b>100.0</b>

Table 10: Intending Resident Arrivals by Country of Residence by Age Groups by Sex: 2<sup>nd</sup> Quarter 2011

Country of Usual Residence	Age-Group																		Total		
	0-14		15-24		25-34		35-44		45-54		55-64		65+		Not Stated		M	F	All		
	M	F	M	F	M	F	M	F	M	F	M	F	M	F							
Australia	8	7	2	2	23	27	43	18	47	23	24	11	12	3	4	5	163	96	259		
PNG	2	3	1	1	4	1	13	2	7	1	-	-	-	-	3	-	30	8	38		
US	-	-	1	-	1	1	2	-	2	-	1	4	-	-	1	3	8	8	16		
NZ	3	5	1	-	13	3	10	4	10	8	6	5	2	1	2	-	47	26	73		
UK	-	-	-	-	-	-	-	1	4	1	4	-	-	-	-	1	8	3	11		
Japan	-	-	-	3	2	-	2	-	3	-	3	2	1	-	-	-	11	5	16		
Germany	-	-	-	-	-	1	-	-	-	1	-	-	-	-	-	-	-	2	2		
Canada	-	-	-	-	-	-	-	-	1	1	1	-	-	-	-	-	2	1	3		
Oth.Pacific	1	2	-	-	12	5	9	-	5	2	4	1	-	-	1	-	32	10	42		
Vanuatu	2	5	-	1	2	1	5	1	2	-	-	-	-	-	4	-	15	8	23		
Hong Kong	-	-	-	-	-	-	-	-	-	-	-	-	-	-	-	-	-	-	-		
Fiji	3	1	3	1	11	3	8	3	11	5	4	2	-	-	1	-	41	15	56		
Oth.Asia	5	2	32	17	70	22	110	13	90	9	24	3	5	1	7	2	343	69	412		
Netherlands	-	-	-	-	-	-	-	-	-	-	-	-	-	-	-	-	-	-	-		
Oth.Europe	-	-	1	-	-	-	-	-	-	1	-	-	-	-	-	-	1	1	2		
France	-	-	-	-	-	2	-	-	-	-	-	-	-	-	-	-	-	2	2		
Italy	-	-	-	-	-	-	-	-	-	1	1	-	-	-	-	-	1	1	2		
Oth.Country	-	-	-	-	4	3	4	-	5	-	1	-	-	-	-	-	14	3	17		
<b>Total</b>	<b>24</b>	<b>25</b>	<b>41</b>	<b>25</b>	<b>142</b>	<b>69</b>	<b>206</b>	<b>42</b>	<b>187</b>	<b>53</b>	<b>73</b>	<b>28</b>	<b>20</b>	<b>5</b>	<b>23</b>	<b>11</b>	<b>716</b>	<b>258</b>	<b>974</b>		
	<b>Percentage</b>																				
Australia	3.1	2.7	0.8	0.8	8.9	10.4	16.6	6.9	18.1	8.9	9.3	4.2	4.6	1.2	1.5	1.9	62.9	37.1	100.0		
PNG	5.3	7.9	2.6	2.6	10.5	2.6	34.2	5.3	18.4	2.6	-	-	-	-	7.9	-	78.9	21.1	100.0		
US	-	-	6.3	-	6.3	6.3	12.5	-	12.5	-	6.3	25.0	-	-	6.3	18.8	50.0	50.0	100.0		
NZ	4.1	6.8	1.4	-	17.8	4.1	13.7	5.5	13.7	11.0	8.2	6.8	2.7	1.4	2.7	-	64.4	35.6	100.0		
UK	-	-	-	-	-	-	-	9.1	36.4	9.1	36.4	-	-	-	-	9.1	72.7	27.3	100.0		
Japan	-	-	-	18.8	12.5	-	12.5	-	18.8	-	18.8	12.5	6.3	-	-	-	68.8	31.3	100.0		
Germany	-	-	-	-	0.0	50.0	-	-	-	50.0	-	-	-	-	-	-	0.0	100.0	100.0		
Canada	-	-	-	-	-	-	-	-	33.3	33.3	33.3	-	-	-	-	-	66.7	33.3	100.0		
Oth.Pacific	2.4	4.8	-	-	28.6	11.9	21.4	-	11.9	4.8	9.5	2.4	-	-	2.4	-	76.2	23.8	100.0		
Vanuatu	8.7	21.7	-	4.3	8.7	4.3	21.7	4.3	8.7	-	-	-	-	-	17.4	-	65.2	34.8	100.0		
Hong Kong	-	-	-	-	-	-	-	-	-	-	-	-	-	-	-	-	-	-	-		
Fiji	5.4	1.8	5.4	1.8	19.6	5.4	14.3	5.4	19.6	8.9	7.1	3.6	-	-	1.8	-	73.2	26.8	100.0		
Oth.Asia	1.2	0.5	7.8	4.1	17.0	5.3	26.7	3.2	21.8	2.2	5.8	0.7	1.2	0.2	1.7	0.5	83.3	16.7	100.0		
Netherlands	-	-	-	-	-	-	-	-	-	-	-	-	-	-	-	-	-	-	-		
Oth.Europe	-	-	50.0	-	-	-	-	-	-	50.0	-	-	-	-	-	-	50.0	50.0	100.0		
France	-	-	-	-	-	100.0	-	-	-	-	-	-	-	-	-	-	-	100.0	100.0		
Italy	-	-	-	-	-	-	-	-	-	50.0	50.0	-	-	-	-	-	50.0	50.0	100.0		
Oth.Country	-	-	-	-	23.5	17.6	23.5	-	29.4	-	5.9	-	-	-	-	-	82.4	17.6	100.0		
<b>Total</b>	<b>2.5</b>	<b>2.6</b>	<b>4.2</b>	<b>2.6</b>	<b>14.6</b>	<b>7.1</b>	<b>21.1</b>	<b>4.3</b>	<b>19.2</b>	<b>5.4</b>	<b>7.5</b>	<b>2.9</b>	<b>2.1</b>	<b>0.5</b>	<b>2.4</b>	<b>1.1</b>	<b>73.5</b>	<b>26.5</b>	<b>100.0</b>		



Table 11: Returning Resident Arrivals by Country of Residence by Age Groups by Sex: 2<sup>nd</sup> Quarter 2011

Country of Usual Residence	Age-Group																		Total		
	0-14		15-24		25-34		35-44		45-54		55-64		65+		Not Stated		M	F	All		
	M	F	M	F	M	F	M	F	M	F	M	F	M	F	M	F	M	F	All		
Australia	-	-	-	-	-	-	-	-	1	-	-	-	-	-	-	-	1	-	1		
PNG	-	-	-	-	-	-	-	-	-	-	-	-	-	-	-	-	-	-	-		
US	-	-	-	-	-	-	-	-	-	-	-	-	-	-	-	-	-	-	-		
NZ	-	-	-	-	1	-	-	-	-	-	-	-	-	-	-	-	1	-	1		
UK	-	-	-	-	-	-	-	-	-	-	-	-	-	-	-	-	-	-	-		
Japan	-	-	-	-	1	-	-	-	2	1	-	2	1	-	-	-	4	3	7		
Germany	-	-	-	-	-	-	-	-	-	-	-	-	-	-	-	-	-	-	-		
Canada	-	-	-	-	-	-	-	-	-	-	-	-	-	-	-	-	-	-	-		
Oth.Pacific	-	-	-	-	-	-	-	-	-	-	-	-	-	-	-	-	-	-	-		
Vanuatu	-	-	-	-	-	-	-	-	-	-	-	-	-	-	-	-	-	-	-		
Hong Kong	-	-	-	-	-	-	-	-	-	-	-	-	-	-	-	-	-	-	-		
Fiji	-	-	-	-	-	-	-	-	-	-	-	-	-	-	-	-	-	-	-		
Oth.Asia	-	-	-	-	-	-	1	-	1	-	-	-	-	-	-	-	2	-	2		
Netherlands	-	-	-	-	-	-	-	-	-	-	-	-	-	-	-	-	-	-	-		
Oth.Europe	-	-	-	-	-	-	-	-	-	1	-	-	-	-	-	-	-	1	1		
France	-	-	-	-	-	-	-	-	-	-	-	-	-	-	-	-	-	-	-		
Italy	-	-	-	-	-	-	-	-	-	-	-	-	-	-	-	-	-	-	-		
Oth.Country	-	-	-	-	-	-	-	-	-	-	-	-	-	-	-	-	-	-	-		
Solomon Is.	105	92	191	144	481	288	601	300	413	173	243	80	57	10	117	81	2,208	1,168	3,376		
Total	105	92	191	144	483	288	602	300	417	175	243	82	58	10	117	81	2,216	1,172	3,388		
<u>Percentage</u>																					
Australia	-	-	-	-	-	-	-	-	100.0	-	-	-	-	-	-	-	100.0	-	100.0		
PNG	-	-	-	-	-	-	-	-	-	-	-	-	-	-	-	-	-	-	-		
US	-	-	-	-	-	-	-	-	-	-	-	-	-	-	-	-	-	-	-		
NZ	-	-	-	-	100.0	-	-	-	-	-	-	-	-	-	-	-	-	-	100.0		
UK	-	-	-	-	-	-	-	-	-	-	-	-	-	-	-	-	-	-	-		
Japan	-	-	-	-	14.3	-	-	-	28.6	14.3	-	28.6	14.3	-	-	-	57.1	42.9	100.0		
Germany	-	-	-	-	-	-	-	-	-	-	-	-	-	-	-	-	-	-	-		
Canada	-	-	-	-	-	-	-	-	-	-	-	-	-	-	-	-	-	-	-		
Oth.Pacific	-	-	-	-	-	-	-	-	-	-	-	-	-	-	-	-	-	-	-		
Vanuatu	-	-	-	-	-	-	-	-	-	-	-	-	-	-	-	-	-	-	-		
Hong Kong	-	-	-	-	-	-	-	-	-	-	-	-	-	-	-	-	-	-	-		
Fiji	-	-	-	-	-	-	-	-	-	-	-	-	-	-	-	-	-	-	-		
Oth.Asia	-	-	-	-	-	-	50.0	-	50.0	-	-	-	-	-	-	-	100.0	-	100.0		
Netherlands	-	-	-	-	-	-	-	-	-	-	-	-	-	-	-	-	-	-	-		
Oth.Europe	-	-	-	-	-	-	-	-	-	100.0	-	-	-	-	-	-	-	-	100.0		
France	-	-	-	-	-	-	-	-	-	-	-	-	-	-	-	-	-	-	-		
Italy	-	-	-	-	-	-	-	-	-	-	-	-	-	-	-	-	-	-	-		
Oth.Country	-	-	-	-	-	-	-	-	-	-	-	-	-	-	-	-	-	-	-		
Solomon Is.	3.1	2.7	5.7	4.3	14.2	8.5	17.8	8.9	12.2	5.1	7.2	2.4	1.7	0.3	3.5	2.4	65.4	34.6	100.0		
Total	3.1	2.7	5.6	4.3	14.3	8.5	17.8	8.9	12.3	5.2	7.2	2.4	1.7	0.3	3.5	2.4	65.4	34.6	100.0		

Table 12: Returning Resident Arrivals by Country of Residence by Occupation and Sex: 2<sup>nd</sup> Quarter 2011

Country of Usual Residence	Professional and Technical		Administration and Managerial		Clerical & Related Work		Sales Worker		Service Worker		Agriculture Forestry Fishery		Production & Related Work		Other		No Work		Total		
	M	F	M	F	M	F	M	F	M	F	M	F	M	F	M	F	M	F	M	F	All
	Australia	-	-	1	-	-	-	-	-	-	-	-	-	-	-	-	-	-	-	1	-
PNG	-	-	-	-	-	-	-	-	-	-	-	-	-	-	-	-	-	-	-	-	-
US	-	-	-	-	-	-	-	-	-	-	-	-	-	-	-	-	-	-	-	-	-
NZ	-	-	-	-	-	-	-	-	-	-	-	-	-	-	1	-	-	-	1	-	1
UK	-	-	-	-	-	-	-	-	-	-	-	-	-	-	-	-	-	-	-	-	-
Japan	1	2	2	-	-	-	-	-	-	1	-	-	-	-	1	-	-	-	4	3	7
Germany	-	-	-	-	-	-	-	-	-	-	-	-	-	-	-	-	-	-	-	-	-
Canada	-	-	-	-	-	-	-	-	-	-	-	-	-	-	-	-	-	-	-	-	-
Oth.Pacific	-	-	-	-	-	-	-	-	-	-	-	-	-	-	-	-	-	-	-	-	-
Vanuatu	-	-	-	-	-	-	-	-	-	-	-	-	-	-	-	-	-	-	-	-	-
Hong Kong	-	-	-	-	-	-	-	-	-	-	-	-	-	-	-	-	-	-	-	-	-
Fiji	-	-	-	-	-	-	-	-	-	-	-	-	-	-	-	-	-	-	-	-	-
Oth.Asia	1	-	1	-	-	-	-	-	-	-	-	-	-	-	-	-	-	-	2	-	2
Netherlands	-	-	-	-	-	-	-	-	-	-	-	-	-	-	-	-	-	-	-	-	-
Oth.Europe	-	-	-	-	-	-	-	-	-	-	-	-	-	-	1	-	-	-	-	1	1
France	-	-	-	-	-	-	-	-	-	-	-	-	-	-	-	-	-	-	-	-	-
Italy	-	-	-	-	-	-	-	-	-	-	-	-	-	-	-	-	-	-	-	-	-
Oth.Country	-	-	-	-	-	-	-	-	-	-	-	-	-	-	-	-	-	-	-	-	-
Solomon Is.	737	376	248	90	51	28	43	8	69	210	41	7	66	6	804	338	149	105	2,208	1,168	3,376
Total	739	378	252	90	51	28	43	8	69	211	41	7	66	6	806	339	149	105	2,216	1,172	3,388
	Percentage																				
Australia	-	-	100.0	-	-	-	-	-	-	-	-	-	-	-	-	-	-	-	-	-	100.0
PNG	-	-	-	-	-	-	-	-	-	-	-	-	-	-	-	-	-	-	-	-	-
US	-	-	-	-	-	-	-	-	-	-	-	-	-	-	-	-	-	-	-	-	-
NZ	-	-	-	-	-	-	-	-	-	-	-	-	-	-	-	-	-	-	-	-	-
UK	-	-	-	-	-	-	-	-	-	-	-	-	-	-	-	-	-	-	-	-	-
Japan	14.3	28.6	28.6	-	-	-	-	-	14.3	-	-	-	-	-	14.3	-	-	-	57.1	42.9	100.0
Germany	-	-	-	-	-	-	-	-	-	-	-	-	-	-	-	-	-	-	-	-	-
Canada	-	-	-	-	-	-	-	-	-	-	-	-	-	-	-	-	-	-	-	-	-
Oth.Pacific	-	-	-	-	-	-	-	-	-	-	-	-	-	-	-	-	-	-	-	-	-
Vanuatu	-	-	-	-	-	-	-	-	-	-	-	-	-	-	-	-	-	-	-	-	-
Hong Kong	-	-	-	-	-	-	-	-	-	-	-	-	-	-	-	-	-	-	-	-	-
Fiji	-	-	-	-	-	-	-	-	-	-	-	-	-	-	-	-	-	-	-	-	-
Oth.Asia	50.0	-	50.0	-	-	-	-	-	-	-	-	-	-	-	-	-	-	-	100.0	-	100.0
Netherlands	-	-	-	-	-	-	-	-	-	-	-	-	-	-	-	-	-	-	-	-	-
Oth.Europe	-	-	-	-	-	-	-	-	-	-	-	-	-	-	-	-	-	-	-	-	-
France	-	-	-	-	-	-	-	-	-	-	-	-	-	-	-	-	-	-	-	-	-
Italy	-	-	-	-	-	-	-	-	-	-	-	-	-	-	-	-	-	-	-	-	-
Oth.Country	-	-	-	-	-	-	-	-	-	-	-	-	-	-	-	-	-	-	-	-	-
Solomon Is.	21.8	11.1	7.3	2.7	1.5	0.8	1.3	0.2	2.0	6.2	1.2	0.2	2.0	0.2	23.8	10.0	4.4	3.1	65.4	34.6	100.0
Total	21.8	11.2	7.4	2.7	1.5	0.8	1.3	0.2	2.0	6.2	1.2	0.2	1.9	0.2	23.8	10.0	4.4	3.1	65.4	34.6	100.0