



**Solomon Islands Government**

**Statistical Bulletin: No: 17/2015**

**VISITOR STATISTICS**

(Third Quarter 2015)

**Solomon Islands National Statistics Office**

**Ministry of Finance**

**Honiara**

## TABLE OF CONTENTS

Introduction.....	3
COMMENTARY OF RESULTS .....	5
<i>International Arrivals</i> .....	5
<i>Arrivals by Country of Residence</i> .....	5
<i>Visitor by Month</i> .....	5
<i>Tourists</i> .....	5
<i>Visitors by Purpose of Visit</i> .....	5
<i>Visitor by Age Group</i> .....	5
<i>Visitor by Occupation:</i> .....	5
<i>Visitor by Carrier</i> .....	5

### **Charts**

Chart 1: Arrivals by Category, 3 <sup>rd</sup> Quarter 2015.....	6
Chart 2: Visitor Arrivals by Country of Residence by quarter: 3 <sup>rd</sup> Quarter 2015.....	7
Chart 3: Visitor Arrivals by Month, 2012 to 3 <sup>rd</sup> Quarter 2015 .....	8
Chart 4: Tourist Arrivals by Country of Residence, 3 <sup>rd</sup> Quarter 2015.....	9
Chart 5: Visitor Arrivals by Country of Residence by Purpose of Visit, 3 <sup>rd</sup> Quarter 2015.....	10
Chart 6: Visitor Arrivals by Age group category by sex, 3 <sup>rd</sup> Quarter 2015.....	11
Chart 7: Visitor Arrivals by Occupation by sex, 3 <sup>rd</sup> Quarter 2015.....	12
Chart 8: Visitor Arrivals by Carrier by sex, 3 <sup>rd</sup> Quarter 2015.....	13

### **Tables**

Table 1: Total Arrivals Classified by Purpose of Travel by Sex by Year by Quarter: 3 <sup>rd</sup> Quarter 2015.....	6
Table 2: Visitors Arrivals by Country of Residence by Year by Quarter: 3 <sup>rd</sup> Quarter 2015 .....	7
Table 3: Visitors Arrivals by Month: 2006 to 3 <sup>rd</sup> Quarter 2015 .....	8
Table 4: Visitors Classified as Tourists by Country of Residence by Year, Quarter and Average Length..... of Stay: 3 <sup>rd</sup> quarter 2013 to 3 <sup>rd</sup> Quarter 2015 .....	9
Table 5: Visitor Arrivals by Country of Residence by Purpose of Visit by sex: 3 <sup>rd</sup> Quarter 2015.....	10
Table 6: Visitors Arrivals by Country of Residence by Age Groups by sex: 3 <sup>rd</sup> Quarter 2015 .....	11
Table 7: Visitors Arrivals by Country of Residence by Occupation and Sex: 3 <sup>rd</sup> Quarter 2015 .....	12
Table 8: Visitors Arrivals by Country of Residence by Carrier By Sex: 3 <sup>rd</sup> Quarter 2015.....	13

Appendix 1 .....	14
<i>Concepts and Definitions</i> .....	14
Appendix 2.....	15

Table 9: Intending Resident Arrivals by Country of residence by Occupation and sex: 3 <sup>rd</sup> Quarter 2015 .....	15
Table 10: Intending Resident Arrivals by country of Residence by Age Groups by Sex: 3 <sup>rd</sup> Quarter 2015 .....	16
Table 11: Returning Resident Arrivals by country of Residence by Age Groups and sex: 3 <sup>rd</sup> Quarter 2015 .....	17
Table 12: Returning Resident Arrivals by country of Residence by Occupation and sex: 3 <sup>rd</sup> Quarter 2015 .....	18

### **Introduction**

This quarterly bulletin is produced by the National Statistics Office NSO in the Ministry of Finance and Treasury. It provides information on international arrivals comprised of the returning resident, intending resident, and visitor. The explanation of these categories is provided in Appendix 1 of the bulletin.

Visitor category comprised the bigger share of the bulletin, (portrayed in tables 1 to 8); compared to the returning and intending resident category portrayed in Tables 1, and 9 to 12. The bulletin includes twelve tables and eight charts stretched over cross-field tabulation, preferably to meet information need of local, regional, and international researchers.

The information captured through a self fill Disembarkation form that was completed by all disembarking passengers. The forms were collected by Immigration officials at international check-in counters on arrival. The coverage of the bulletin is complete.

Sheer acknowledgement is owed to the Immigration Department for their continuous support of this bulletin, by providing an office space and permitting the statistics office to input completed forms. With the official arrangement in-placed between the Statistics and Immigration departments this bulletin is possible.

The inclusion of four new tables 9 to 12 in Appendix 2 of the bulletin anticipates to complete the distribution portrait of Intending and Returning resident. The distribution is by age groups, occupation and by country of usual residence.

Data limitations, highlighted in the previous bulletin still remain, though some have substantially improved but noted again for ease of reference as follows:-

- Data entry duplication by the Immigration and Statistics departments was a long standing issue. Discussion of the issues had been made by the two departments, though resolution has been recognized, this was yet to be put in place.
- Timeliness of visitor statistics has improved but the bulletin may be delayed by the production process.
- The information contained in the bulletin is based on information captured from the data source by the SINSO.
- The monetary value of the industry is not available and thus not possible in this bulletin. The concepts and definitions of the arrival categories were included in Appendix 1. The symbols that are likely to be used are:
  - zero if representing a value
  - negative change if representing a percentage change
  - + positive change if representing a percentage change
  - p preliminary figure, subject to revision
  - r revised
  - e estimate
  - n/a not available

For more information contact the Statistics Office, Department of Finance and Treasury:

TELEPHONE : (677) 22154/21427

FACSMILE : (677) 23775

E-MAIL : STATS-management@mof.gov.sb

: STATS-SocialDemography@mof.gov.sb

WEBSITE : **<http://www.spc.int/prism/solomon>**

Contact persons:      1. Mrs. Irene **KALAUMA**, Chief Statistician  
                                 2. Mrs. Anterlyn **TUZAKANA**, Senior Statistician

## COMMENTARY OF RESULTS

### International Arrivals

Total Arrivals for the third quarter of 2015 was 10,980. This is an increase of 0.6% compared to the previous quarter (2<sup>nd</sup> Quarter 2015). Compared to the same quarter a year ago, an increase of 7.1% was recorded.

Arrivals classified by the category for the third quarter of 2015 showed that returning resident comprise of 44%. Visitors recorded 52% and the remaining 4% was recorded for intending resident.

Visitors' arrival for the third quarter showed an increase of 2.7% to 5,714 compared to the second quarter 2015 figure of 5,562. Compared to the same quarter in 2014, an increase of 4.2% was recorded. Table 1, showed visitor and returning resident categories comprised the larger proportion of all arrivals while the intending resident represents the lesser share during the quarter. Chart 1 gives a clear picture of all the categories.

The country of China is now added to the list of country of residence. In previous reports 'China' was merged with countries of 'Other Asia'.

### Visitor by Country of Residence

Arrivals by country of residence for third quarter of the year showed that Australians (45.5%) remains the frequent travellers to Solomon Islands, followed by Other Asia (10.9%), NZ (7.7%), US (6.8%), Fiji (6.3%), PNG & Japan (4.1%), and China (3.7%). Table 2 showed further detailed information.

### Visitor by Month

Visitors by monthly arrivals for the quarter showed that September has the highest number of arrivals with 2,211 persons. This was followed by the month of July with a recorded total of 2,077 persons and August the least with 1,426 persons.

### Tourists

Tourist<sup>1</sup> arrivals for third quarter of the year recorded a total of 1,760 persons and they spent an average of 13 days in the country. The highest number of tourists recorded for the quarter comes from Australia (52.3%) and staying in the country for an average of 11 days. This was followed by US (8.0%), Other Asia (7.3%), Japan (6.9%), China (4.4%), and NZ (4.3%).

### Visitor by Purpose of Visit

Distribution of visitors by purpose of visit revealed that Holiday & Vocation (29.4%) as most popular during the quarter. This was followed by Other (25.7%), Business & Conference (25.1%), Visit friends & relatives (18.3%) and Transit & stopover the least with (1.4%).

### Visitor by Age Group

Visitor Arrivals by broad age groups showed that 73.8% of arrivals were in the 25years to 64years age range. The younger and the older age brackets represent 21.1% while the remaining 5.0% represents visitors who did not state their age. Male represent 67.6% of the arrival and female 32.4%. (Refer to Chart 6)

### Visitor by Occupation

Visitor by occupational category revealed that those who stated Other (37.0%) recorded the highest during the quarter. This was followed by Professional & Technical (32.2%), Administration and managerial (10.5%), No Work (9.6%), Service Worker (4.0%) and Production & Related Work (3.6%). Table 7 further revealed that Australia not only dominated the Arrivals in terms of markets but also dominated most of the categories of occupations during the quarter. Refer to Table 7 for further analysis.

### Visitor by Carrier

The most popular carriers during the quarter were Solomon Airlines (47.1%) followed by Virgin Australia (27.7%), Air Niu Gini (13.2%) and Fiji Airways (10.7%).

---

<sup>1</sup> Refer to Appendix 1 for the definition

Table 1: Total Arrivals Classified by Purpose of Travel by Sex, by Year by Quarter: 3<sup>rd</sup> Quarter 2015

Year / Quarter	Returning Resident						Intending Resident			Visitor			Total			
	Solomon Islander			Non-Solomon Islander			All	M	F	T	M	F	T	M	F	All
	M	F	T	M	F	T										
2012 1 <sup>st</sup>	1,915	994	2,909	15	3	18	2,927	1,029	387	1,416	3,554	1,097	4,651	6,513	2,481	8,994
2 <sup>nd</sup>	1,782	967	2,749	667	312	979	3,728	695	278	973	4,921	2,008	6,929	8,065	3,565	11,630
3 <sup>rd</sup>	2,169	1,218	3,387	22	12	34	3,421	840	255	1,095	5,123	2,184	7,307	8,154	3,669	11,823
4 <sup>th</sup>	3,192	1,784	4,976	5	1	6	4,982	631	215	846	3,572	1,466	5,038	7,400	3,466	10,866
2013 1 <sup>st</sup>	1,966	1,111	3,077	6	-	6	3,083	961	338	1,299	4,034	1,284	5,318	6,967	2,733	9,700
2 <sup>nd</sup>	2,422	1,344	3,766	1	2	3	3,769	764	279	1,043	4,531	1,664	6,195	7,718	3,289	11,007
3 <sup>rd</sup>	2,442	1,415	3,857	5	3	8	3,865	715	228	943	5,007	1,880	6,887	8,169	3,526	11,695
4 <sup>th</sup>	3,577	2,051	5,628	12	12	24	5,652	620	224	844	4,294	1,737	6,031	8,503	4,024	12,527
2014 1 <sup>st</sup>	2,100	1,287	3,387	3	3	6	3,393	841	318	1,159	3,685	1,069	4,754	6,629	2,677	9,306
2 <sup>nd</sup>	2,511	1,231	3,742	126	56	182	3,924	604	204	808	3,506	1,419	4,925	6,747	2,910	9,657
3 <sup>rd</sup>	2,399	1,295	3,694	5	4	9	3,703	823	244	1,067	3,792	1,691	5,483	7,019	3,234	10,253
4 <sup>th</sup>	3,290	1,937	5,227	20	5	25	5,252	692	147	839	3,481	1,427	4,908	7,483	3,516	10,999
2015 1 <sup>st</sup>	2,356	1,530	3,886	9	6	15	3,901	843	280	1,123	3,251	1,148	4,399	6,459	2,964	9,423
2 <sup>nd</sup>	2,770	1,535	4,305	14	3	17	4,322	825	201	1,026	3,958	1,604	5,562	7,567	3,343	10,910
3 <sup>rd</sup>	3,022	1,749	4,771	14	6	20	4,791	348	127	475	3,864	1,850	5,714	7,248	3,732	10,980
Percentage change																
11 <sup>th</sup> -12 <sup>th</sup>	-3.2	1.1	-1.7	25.0	-50.0	-	-1.7	-21.6	-19.8	-21.2	-17.7	-15.4	-17.0	-12.4	-8.0	-11.0
12 <sup>th</sup> -13 <sup>th</sup>	47.2	46.5	46.9	-77.3	-91.7	-82.4	45.6	-24.9	-15.7	-22.7	-30.3	-32.9	-31.1	-9.2	-5.5	-8.1
12 <sup>th</sup> -13 <sup>th</sup>	2.7	11.8	5.8	-60.0	-100.0	-66.7	5.3	-6.6	-12.7	-8.3	13.5	17.0	14.3	7.0	10.2	7.8
12 <sup>th</sup> -13 <sup>th</sup>	-38.4	-37.7	-38.2	20.0	-100.0	-	-38.1	52.3	57.2	53.5	12.9	-12.4	5.6	-5.9	-21.1	-10.7
12 <sup>nd</sup> -13 <sup>nd</sup>	35.9	39.0	37.0	-99.9	-99.4	-99.7	1.1	9.9	0.4	7.2	-7.9	-17.1	-10.6	-4.3	-7.7	-5.4
13 <sup>th</sup> -13 <sup>nd</sup>	23.2	21.0	22.4	-83.3	-	-50.0	22.3	-20.5	-17.5	-19.7	12.3	29.6	16.5	10.8	20.3	13.5
12 <sup>th</sup> -13 <sup>th</sup>	12.6	16.2	13.9	-77.3	-75.0	-76.5	13.0	-14.9	-10.6	-13.9	-2.3	-13.9	-5.7	0.2	-3.9	-1.1
13 <sup>th</sup> -13 <sup>th</sup>	0.8	5.3	2.4	400.0	50.0	166.7	2.5	-6.4	-18.3	-9.6	10.5	13.0	11.2	5.8	7.2	6.3
12 <sup>th</sup> -13 <sup>th</sup>	12.1	15.0	13.1	140.0	1100.0	300.0	13.4	-1.7	4.2	-0.2	20.2	18.5	19.7	14.9	16.1	15.3
13 <sup>th</sup> -13 <sup>th</sup>	46.5	44.9	45.9	140.0	300.0	200.0	46.2	-13.3	-1.8	-10.5	-14.2	-7.6	-12.4	4.1	14.1	7.1
13 <sup>th</sup> -14 <sup>th</sup>	6.8	15.8	10.1	-50.0	-	0.0	10.1	-12.5	-5.9	-10.8	-8.7	-16.7	-10.6	-4.9	-2.0	-4.1
13 <sup>th</sup> -14 <sup>th</sup>	-41.3	-37.3	-39.8	-75.0	-75.0	-75.0	-40.0	35.6	42.0	37.3	-14.2	-38.5	-21.2	-22.0	-33.5	-25.7
13 <sup>th</sup> -14 <sup>th</sup>	3.7	-8.4	-0.6	12500.0	2700.0	5966.7	4.1	-20.9	-26.9	-22.5	-22.6	-14.7	-20.5	-12.6	-11.5	-12.3
14 <sup>th</sup> -14 <sup>th</sup>	19.6	-4.4	10.5	4100.0	1766.7	2933.3	15.6	-28.2	-35.8	-30.3	-4.9	32.7	3.6	1.8	8.7	3.8
13 <sup>th</sup> -14 <sup>th</sup>	-1.8	-8.5	-4.2	0.0	33.3	12.5	-4.2	15.1	7.0	13.1	-24.3	-10.1	-20.4	-14.1	-8.3	-12.3
14 <sup>th</sup> -14 <sup>th</sup>	-4.5	5.2	-1.3	-96.0	-92.9	-95.1	-5.6	36.3	19.6	32.1	8.2	19.2	11.3	4.0	11.1	6.2
13 <sup>th</sup> -14 <sup>th</sup>	-8.0	-5.6	-7.1	66.7	-58.3	4.2	-7.1	11.6	-34.4	-0.6	-18.9	-17.8	-18.6	-12.0	-12.6	-12.2
14 <sup>th</sup> -14 <sup>th</sup>	37.1	49.6	41.5	300.0	25.0	177.8	41.8	-15.9	-39.8	-21.4	-8.2	-15.6	-10.5	6.6	8.7	7.3
14 <sup>th</sup> -15 <sup>th</sup>	12.2	18.9	14.7	200.0	100.0	150.0	15.0	0.2	-11.9	-3.1	-11.8	7.4	-7.5	-2.6	10.7	1.3
14 <sup>th</sup> -15 <sup>th</sup>	-28.4	-21.0	-25.7	-55.0	20.0	-40.0	-25.7	21.8	90.5	33.8	-6.6	-19.6	-10.4	-13.7	-15.7	-14.3
15 <sup>th</sup> -15 <sup>th</sup>	10.3	24.7	15.0	-88.9	-94.6	-90.7	10.1	36.6	-1.5	27.0	12.9	13.0	12.9	12.2	14.9	13.0
15 <sup>th</sup> -15 <sup>th</sup>	17.6	0.3	10.8	55.6	-50.0	13.3	10.8	-2.1	-28.2	-8.6	21.7	39.7	26.4	17.2	12.8	15.8
14 <sup>th</sup> -15 <sup>th</sup>	26.0	35.1	29.2	180.0	50.0	122.2	29.4	-57.7	-48.0	-55.5	1.9	9.4	4.2	3.3	15.4	7.1
15 <sup>th</sup> -15 <sup>th</sup>	9.1	13.9	10.8	0.0	100.0	17.6	10.9	-57.8	-36.8	-53.7	-2.4	15.3	2.7	-4.2	11.6	0.6

Chart 1: Arrivals by category 3<sup>rd</sup> quarter 2015

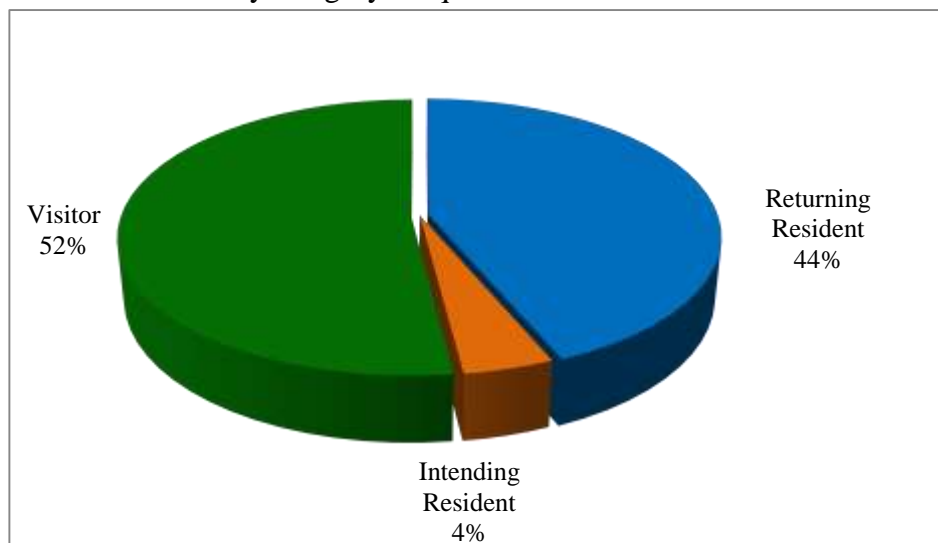


Table 2: Visitor Arrivals by Country of Residence by year by quarter: 3<sup>rd</sup> Quarter 2015

Country of Usual Residence	2012					2013					2014				2015		
	Q1	Q2	Q3	Q4	Total	Q1	Q2	Q3	Q4	Total	Q1	Q2	Q3	Q4	Q1	Q2	Q3
Australia	2,238	2,963	3,404	2,474	11,079	2,282	3,049	3,001	2,849	11,181	2088	2,225	2,521	2,300	1,750	2,519	2,599
PNG	431	602	476	464	1,973	458	417	621	523	2,019	383	260	275	325	323	398	236
US	183	356	561	234	1,334	231	325	357	248	1,161	231	362	324	220	329	322	388
NZ	285	545	560	357	1,747	381	531	607	386	1,905	277	343	404	382	281	376	439
UK	81	84	151	69	385	104	110	152	94	460	65	99	77	96	69	111	90
Japan	162	112	211	129	614	128	116	179	178	601	137	84	172	112	124	91	232
Germany	22	40	29	26	117	33	19	35	49	136	15	30	35	22	25	26	24
Canada	29	25	30	27	111	28	35	40	45	148	38	43	42	26	28	34	31
Oth.Pacific	101	811	371	135	1,418	188	142	202	228	760	139	81	184	167	127	139	126
Vanuatu	121	148	179	147	595	250	185	191	178	804	117	171	100	141	109	152	162
Hong Kong	14	20	21	25	80	16	18	33	14	81	35	11	28	21	25	32	18
Fiji	300	510	444	301	1,555	451	424	528	397	1,800	351	361	273	270	268	405	358
Other Asia	500	544	577	484	2,105	623	655	743	604	2,625	689	580	658	497	603	609	624
Netherlands	12	11	23	11	57	10	6	24	23	63	7	18	13	11	11	11	12
Oth.Europe	76	74	121	50	321	53	57	70	107	287	119	76	130	103	101	109	113
France	24	19	36	9	88	21	21	26	25	93	21	19	33	13	10	15	22
Italy	13	12	40	28	93	16	18	16	33	83	14	10	21	30	21	16	10
China	-	-	-	-	-	-	-	-	-	-	-	103	167	155	164	177	212
Oth.Country	59	53	73	68	253	45	67	62	50	224	28	49	26	17	31	20	18
Total	4,651	6,929	7,307	5,038	23,925	5,318	6,195	6,887	6,031	24,431	4,754	4,925	5,483	4,908	4,399	5,562	5,714
Percentage																	
Australia	48.1	42.8	46.6	49.1	46.3	42.9	49.2	43.6	47.2	45.8	43.9	45.2	46.0	46.9	39.8	45.3	45.5
PNG	9.3	8.7	6.5	9.2	8.2	8.6	6.7	9.0	8.7	8.3	8.1	5.3	5.0	6.6	7.3	7.2	4.1
US	3.9	5.1	7.7	4.6	5.6	4.3	5.2	5.2	4.1	4.8	4.9	7.4	5.9	4.5	7.5	5.8	6.8
NZ	6.1	7.9	7.7	7.1	7.3	7.2	8.6	8.8	6.4	7.8	5.8	7.0	7.4	7.8	6.4	6.8	7.7
UK	1.7	1.2	2.1	1.4	1.6	2.0	1.8	2.2	1.6	1.9	1.4	2.0	1.4	2.0	1.6	2.0	1.6
Japan	3.5	1.6	2.9	2.6	2.6	2.4	1.9	2.6	3.0	2.5	2.9	1.7	3.1	2.3	2.8	1.6	4.1
Germany	0.5	0.6	0.4	0.5	0.5	0.6	0.3	0.5	0.8	0.6	0.3	0.6	0.6	0.4	0.6	0.5	0.4
Canada	0.6	0.4	0.4	0.5	0.5	0.5	0.6	0.6	0.7	0.6	0.8	0.9	0.8	0.5	0.6	0.6	0.5
Oth.Pacific	2.2	11.7	5.1	2.7	5.9	3.5	2.3	2.9	3.8	3.1	2.9	1.6	3.4	3.4	2.9	2.5	2.2
Vanuatu	2.6	2.1	2.4	2.9	2.5	4.7	3.0	2.8	3.0	3.3	2.5	3.5	1.8	2.9	2.5	2.7	2.8
Hong Kong	0.3	0.3	0.3	0.5	0.3	0.3	0.3	0.5	0.2	0.3	0.7	0.2	0.5	0.4	0.6	0.6	0.3
Fiji	6.5	7.4	6.1	6.0	6.5	8.5	6.8	7.7	6.6	7.4	7.4	7.3	5.0	5.5	6.1	7.3	6.3
Oth.Asia	10.8	7.9	7.9	9.6	8.8	11.7	10.6	10.8	10.0	10.7	14.5	11.8	12.0	10.1	13.7	10.9	10.9
Netherlands	0.3	0.2	0.3	0.2	0.2	0.2	0.1	0.3	0.4	0.3	0.1	0.4	0.2	0.2	0.3	0.2	0.2
Oth.Europe	1.6	1.1	1.7	1.0	1.3	1.0	0.9	1.0	1.8	1.2	2.5	1.5	2.4	2.1	2.3	2.0	2.0
France	0.5	0.3	0.5	0.2	0.4	0.4	0.3	0.4	0.4	0.4	0.4	0.4	0.6	0.3	0.2	0.3	0.4
Italy	0.3	0.2	0.5	0.6	0.4	0.3	0.3	0.2	0.5	0.3	0.3	0.2	0.4	0.6	0.5	0.3	0.2
China*	-	-	-	-	-	-	-	-	-	-	-	2.1	3.0	3.2	3.7	3.2	3.7
Oth.Country	1.3	0.8	1.0	1.3	1.1	0.8	1.1	0.9	0.8	0.9	0.6	1.0	0.5	0.3	0.7	0.4	0.3
Total	100.0	100.0	100.0	100.0	100.0	100.0	100.0	100.0	100.0	100.0	100.0	100.0	100.0	100.0	100.0	100.0	100.0

\*Figures for 'China' for previous quarters was included in 'Other Asia'

Chart 2: Visitors Arrival by Country of residence by quarter, 3<sup>rd</sup> quarter 2015

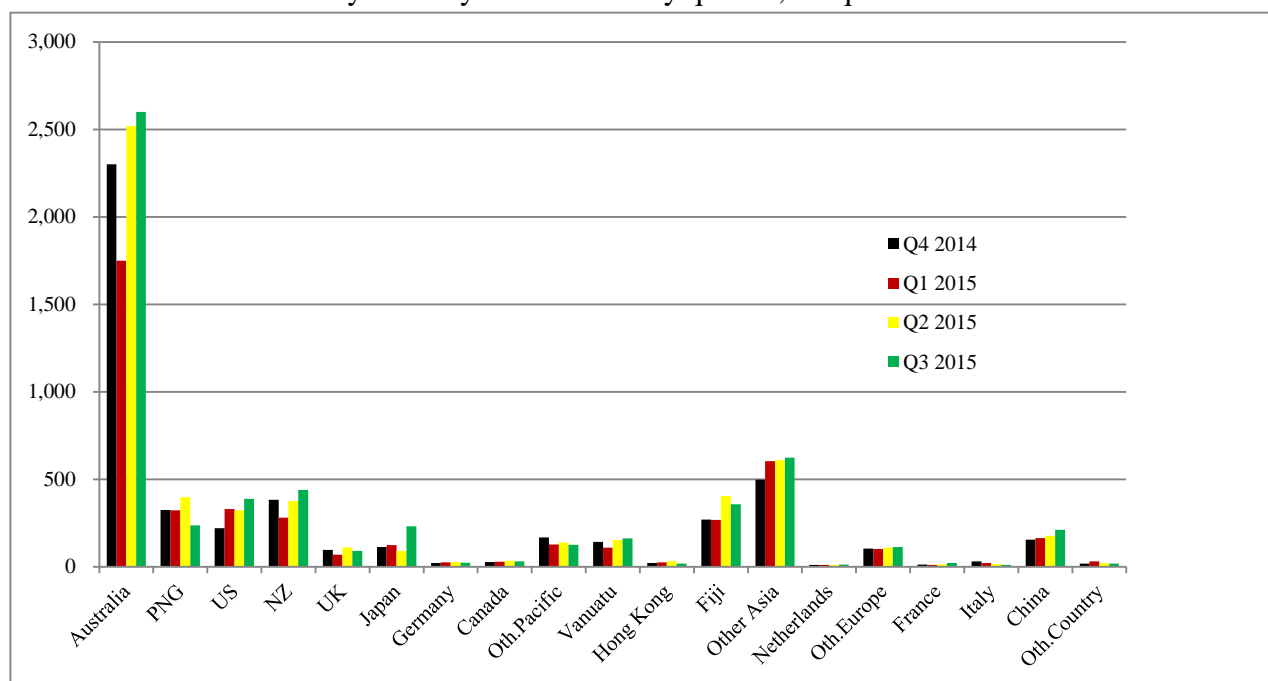


Table 3: Visitor Arrivals by Month: 2006 – 3<sup>rd</sup> Quarter 2015

Month	2006	2007	2008	2009	2010	2011	2012	2013	2014	2015
January	952	546	889	1,602	1,235	1,600	1,383	1,590	1,415	1,259
February	838	1,020	1,282	1,422	1,209	1,658	1,591	1,544	1,523	1,465
March	972	1,251	802	1,249	1,766	1,861	1,677	2,184	1,816	1,675
April	994	1,452	1,388	1,499	1,820	1,736	1,839	2,021	1,514	1,750
May	858	1,137	1,261	1,393	1,137	1,760	1,968	1,857	1,462	1,681
June	1,289	1,265	1,552	1,724	1,797	2,009	3,122	2,317	1,949	2,131
July	865	822	1,692	1,603	2,264	2,185	2,865	2,574	2,114	2,077
August	892	1,299	1,469	1,520	1,845	1,900	2,133	2,022	1,639	1,426
September	681	1,299	1,457	1,659	2,153	2,159	2,309	2,291	1,730	2,211
October	942	1,260	1,399	1,709	1,813	1,931	1,929	2057	1,798	
November	1,118	1,246	1,545	1,475	1,624	2,195	1,545	1981	1,515	
December	1,081	1,151	1,528	1,405	1,858	1,947	1,564	1993	1,595	
Total	11,482	13,748	16,264	18,260	20,521	22,941	23,925	24,431	20,070	15,675
Percentage										
January	8.3	4.0	5.5	8.8	5.5	7.0	5.8	6.5	7.1	8.0
February	7.3	7.4	7.9	7.8	5.4	7.2	6.6	6.3	7.6	9.3
March	8.5	9.1	4.9	6.8	7.8	8.1	7.0	8.9	9.0	10.7
April	8.7	10.6	8.5	8.2	8.1	7.6	7.7	8.3	7.5	11.2
May	7.5	8.3	7.8	7.6	5.0	7.7	8.2	7.6	7.3	10.7
June	11.2	9.2	9.5	9.4	8.0	8.8	13.0	9.5	9.7	13.6
July	7.5	6.0	10.4	8.8	10.0	9.5	12.0	10.5	10.5	13.3
August	7.8	9.4	9.0	8.3	8.2	8.3	8.9	8.3	8.2	9.1
September	5.9	9.4	9.0	9.1	9.6	9.4	9.7	9.4	8.6	14.1
October	8.2	9.2	8.6	9.4	8.0	8.4	8.1	8.4	9.0	
November	9.7	9.1	9.5	8.1	7.2	9.6	6.5	8.1	7.5	
December	9.4	8.4	9.4	7.7	8.2	8.5	6.5	8.2	7.9	
Total	100	100.0	100.0	100.0	100.0	100.0	100.0	100.0	100.0	100.0

Chart 3: Visitors Arrival by month, 2012 – 3<sup>rd</sup> quarter 2015

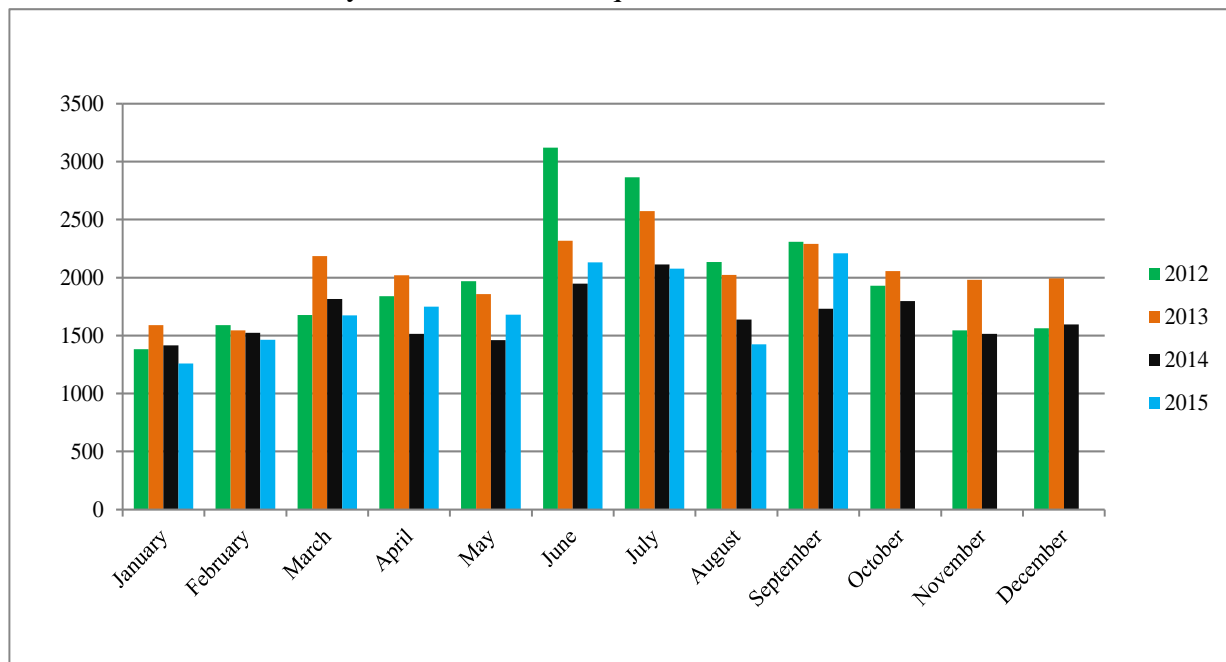




Table 4: Visitors, classified as tourists by Country of residence by year, quarter and average length of stay: 3<sup>rd</sup> quarter 2013 – 3<sup>rd</sup> Quarter 2015

Country of Usual Residence	2013				2014								2015					
	Quarter 3		Quarter 4		Quarter 1		Quarter 2		Quarter 3		Quarter 4		Quarter 1		Quarter 2		Quarter 3	
	tourist	day	tourist	day	tourist	day	tourist	day	tourist	day	tourist	day	tourist	day	tourist	day	tourist	day
Australia	943	12	914	13	484	13	745	13	890	15	782	16	476	14.4	575	11.7	920	10.8
PNG	43	10	105	29	42	14	50	8	42	12	95	19	49	6.7	67	4.0	41	10.0
US	182	13	128	14	82	13	208	10	169	13	126	12	126	7.4	103	14.2	141	11.0
NZ	62	18	69	22	13	13	35	10	63	17	81	18	21	7.5	31	21.7	76	12.6
UK	76	23	31	18	25	24	28	26	34	23	52	14	33	19.6	29	14.7	47	15.3
Japan	59	10	75	8	37	7	10	11	69	14	47	7	48	7.0	20	7.1	121	6.0
Germany	21	11	33	22	9	16	12	11	26	17	11	18	14	6.1	12	18.7	16	16.1
Canada	14	16	20	11	8	11	24	9	20	14	11	13	17	13.9	17	12.5	12	14.8
Oth.Pacific	21	15	30	10	8	9	10	8	19	14	22	25	11	11.3	15	16.6	23	8.9
Vanuatu	12	13	34	17	17	2	32	6	23	17	37	10	20	5.1	18	14.4	29	9.6
Hong Kong	8	14	3	27	10	10	1	7	9	13	4	6	7	12.1	12	7.4	4	18.8
Fiji	14	9	37	14	21	14	28	11	20	14	21	27	23	18.2	24	26.6	30	31.2
Oth.Asia	164	15	151	20	150	21	162	22	196	21	113	23	129	20.9	135	18.2	128	24.6
Netherlands	6	23	13	14	3	13	9	13	9	23	2	30	8	11.3	2	11.5	2	6.0
Oth.Europe	30	13	58	15	66	12	32	17	80	17	51	18	64	11.7	47	11.3	68	9.3
France	13	17	15	33	7	11	9	12	24	18	5	9	3	14.7	4	11.0	16	10.5
Italy	7	11	15	46	5	10	5	11	16	13	14	31	6	16.5	6	5.2	3	24.0
China	-	-	-	-	-	-	28	35	57	25	59	12	41	20.9	50	16.1	77	24.5
Oth.Country	17	12	23	21	1	20	16	13	10	13	5	18	9	29.7	3	10.0	6	17.3
<b>Total</b>	<b>1,692</b>	<b>13</b>	<b>1,754</b>	<b>16</b>	<b>988</b>	<b>14</b>	<b>1,444</b>	<b>14</b>	<b>1,776</b>	<b>16</b>	<b>1,538</b>	<b>16</b>	<b>1,105</b>	<b>13.7</b>	<b>1,170</b>	<b>13.1</b>	<b>1,760</b>	<b>12.7</b>

\*Figures for 'China' for previous quarters was included in 'Other Asia'

Chart 4: Tourist Arrivals by Country of Residence, 3<sup>rd</sup> Quarter 2015

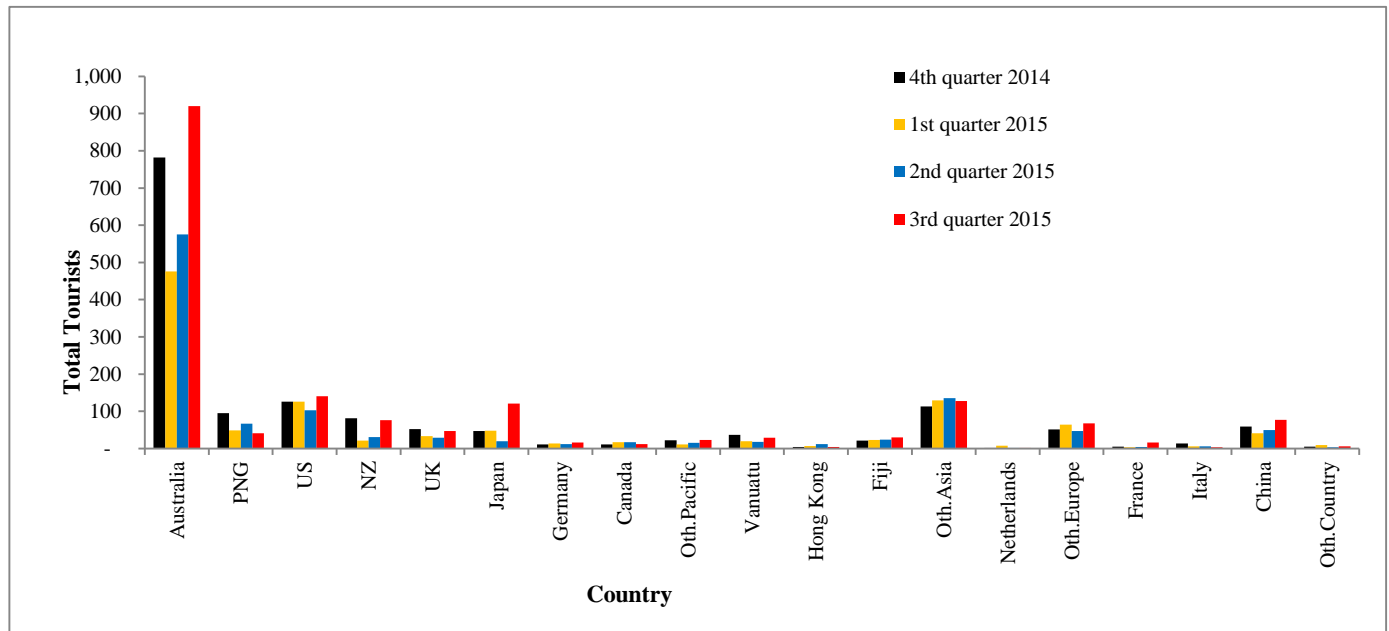


Table 5: Visitor Arrivals by Country of Residence by Purpose of Visit by sex: 3<sup>rd</sup> Quarter 2015

Country of Usual Residence	Business & Conference			Holiday & Vocation			Transit & Stopover			Visit friends/Relatives			Other			Total		
	M	F	T	M	F	T	M	F	T	M	F	T	M	F	T	M	F	All
Australia	414	106	520	534	372	906	9	5	14	261	215	476	472	211	683	1,690	909	2,599
PNG	84	35	119	10	13	23	10	8	18	24	15	39	25	12	37	153	83	236
US	65	19	84	66	67	133	7	1	8	48	44	92	50	21	71	236	152	388
NZ	115	20	135	51	24	75	1		1	66	38	104	99	25	124	332	107	439
UK	7	1	8	21	24	45	2		2	6	7	13	16	6	22	52	38	90
Japan	44	4	48	94	26	120	1		1	22	10	32	25	6	31	186	46	232
Germany		1	1	13	3	16				2	2	4	2	1	3	17	7	24
Canada	3	2	5	7	3	10	2		2	3	3	6	5	3	8	20	11	31
Oth.Pacific	22	17	39	11	9	20			3	11	11	22	25	17	42	69	57	126
Vanuatu	35	25	60	3	8	11	13	5	18	23	9	32	29	12	41	103	59	162
Hong Kong	6	2	8	2	2	4				2	1	3	3		3	13	5	18
Fiji	90	38	128	18	9	27	3		3	28	37	65	90	45	135	229	129	358
Oth.Asia	180	31	211	100	26	126	2		2	76	23	99	152	34	186	510	114	624
Netherlands		2	2	2		2				4	1	5	2	1	3	8	4	12
Oth.Europe	6	9	15	38	27	65	2	1	3	14	5	19	8	3	11	68	45	113
France	2	1	3	11	5	16					1	1	1	1	2	14	8	22
Italy	1		1	3		3				1	2	3		3	3	5	5	10
China	37	9	46	48	25	73	3	1	4	20	11	31	39	19	58	147	65	212
Oth.Country	1	2	3	4	1	5	1		1		1	1	6	2	8	12	6	18
<b>Total</b>	<b>1112</b>	<b>324</b>	<b>1436</b>	<b>1036</b>	<b>644</b>	<b>1680</b>	<b>56</b>	<b>24</b>	<b>80</b>	<b>611</b>	<b>436</b>	<b>1047</b>	<b>1049</b>	<b>422</b>	<b>1471</b>	<b>3,864</b>	<b>1,850</b>	<b>5,714</b>
Percentage																		
Australia	15.9	4.1	20.0	20.5	14.3	34.9	0.3	0.2	0.5	10.0	8.3	18.3	18.2	8.1	26.3	65.0	35.0	100.0
PNG	35.6	14.8	50.4	4.2	5.5	9.7	4.2	3.4	7.6	10.2	6.4	16.5	10.6	5.1	15.7	64.8	35.2	100.0
US	16.8	4.9	21.6	17.0	17.3	34.3	1.8	0.3	2.1	12.4	11.3	23.7	12.9	5.4	18.3	60.8	39.2	100.0
NZ	26.2	4.6	30.8	11.6	5.5	17.1	0.2	0.0	0.2	15.0	8.7	23.7	22.6	5.7	28.2	75.6	24.4	100.0
UK	7.8	1.1	8.9	23.3	26.7	50.0	2.2	0.0	2.2	6.7	7.8	14.4	17.8	6.7	24.4	57.8	42.2	100.0
Japan	19.0	1.7	20.7	40.5	11.2	51.7	0.4	0.0	0.4	9.5	4.3	13.8	10.8	2.6	13.4	80.2	19.8	100.0
Germany	0.0	4.2	4.2	54.2	12.5	66.7	0.0	0.0	0.0	8.3	8.3	16.7	8.3	4.2	12.5	70.8	29.2	100.0
Canada	9.7	6.5	16.1	22.6	9.7	32.3	6.5	0.0	6.5	9.7	9.7	19.4	16.1	9.7	25.8	64.5	35.5	100.0
Oth.Pacific	17.5	13.5	31.0	8.7	7.1	15.9	0.0	2.4	2.4	8.7	8.7	17.5	19.8	13.5	33.3	54.8	45.2	100.0
Vanuatu	21.6	15.4	37.0	1.9	4.9	6.8	8.0	3.1	11.1	14.2	5.6	19.8	17.9	7.4	25.3	63.6	36.4	100.0
Hong Kong	33.3	11.1	44.4	11.1	11.1	22.2	0.0	0.0	0.0	11.1	5.6	16.7	16.7	0.0	16.7	72.2	27.8	100.0
Fiji	25.1	10.6	35.8	5.0	2.5	7.5	0.8	0.0	0.8	7.8	10.3	18.2	25.1	12.6	37.7	64.0	36.0	100.0
Oth.Asia	28.8	5.0	33.8	16.0	4.2	20.2	0.3	0.0	0.3	12.2	3.7	15.9	24.4	5.4	29.8	81.7	18.3	100.0
Netherlands	0.0	16.7	16.7	16.7	0.0	16.7	0.0	0.0	0.0	33.3	8.3	41.7	16.7	8.3	25.0	66.7	33.3	100.0
Oth.Europe	5.3	8.0	13.3	33.6	23.9	57.5	1.8	0.9	2.7	12.4	4.4	16.8	7.1	2.7	9.7	60.2	39.8	100.0
France	9.1	4.5	13.6	50.0	22.7	72.7	0.0	0.0	0.0	0.0	4.5	4.5	4.5	4.5	9.1	63.6	36.4	100.0
Italy	10.0	0.0	10.0	30.0	0.0	30.0	0.0	0.0	0.0	10.0	20.0	30.0	0.0	30.0	30.0	50.0	50.0	100.0
China	17.5	4.2	21.7	22.6	11.8	34.4	1.4	0.5	1.9	9.4	5.2	14.6	18.4	9.0	27.4	69.3	30.7	100.0
Oth.Country	5.6	11.1	16.7	22.2	5.6	27.8	5.6	0.0	5.6	0.0	5.6	5.6	33.3	11.1	44.4	66.7	33.3	100.0
<b>Total</b>	<b>19.5</b>	<b>5.7</b>	<b>25.1</b>	<b>18.1</b>	<b>11.3</b>	<b>29.4</b>	<b>1.0</b>	<b>0.4</b>	<b>1.4</b>	<b>10.7</b>	<b>7.6</b>	<b>18.3</b>	<b>18.4</b>	<b>7.4</b>	<b>25.7</b>	<b>67.6</b>	<b>32.4</b>	<b>100.0</b>

Chart 5: Visitors Arrival by Country of Residence by Purpose of Visit, 3<sup>rd</sup> quarter 2015

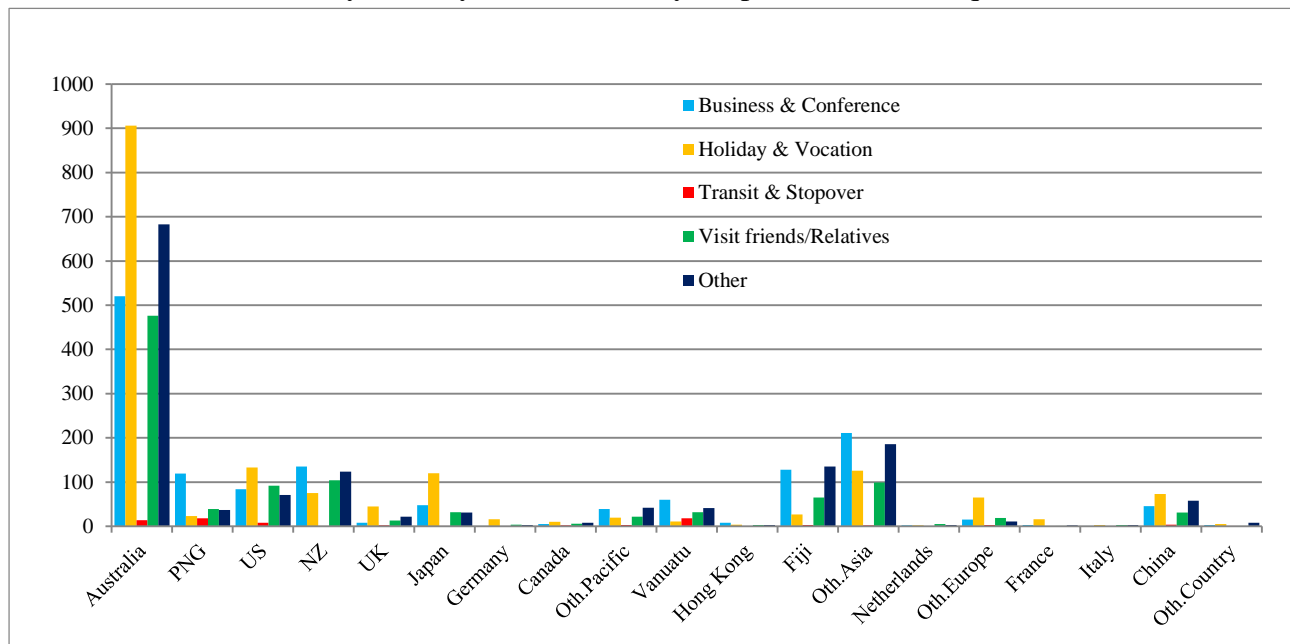


Table 6: Visitor Arrivals by Country of Residence by Age Groups by Sex: 3<sup>rd</sup> Quarter 2015

Country of Usual Residence	Age-Group																		
	0-14		15-24		25-34		35-44		45-54		55-64		65+		Not Stated		Total		
	M	F	M	F	M	F	M	F	M	F	M	F	M	F	M	F	M	F	All
Australia	44	42	151	139	219	138	314	144	370	180	332	145	181	58	79	63	1,690	909	2,599
PNG	4	3	3	8	19	26	40	21	50	12	29	6	2	2	6	5	153	83	236
US	8	6	9	5	26	16	50	20	42	27	54	27	37	42	10	9	236	152	388
NZ	7	4	22	13	37	9	40	17	95	22	68	31	44	6	19	5	332	107	439
UK	-	1	3	14	9	6	5	3	15	6	11	2	8	5	1	1	52	38	90
Japan	5	2	12	3	26	10	32	8	32	4	24	8	53	10	2	1	186	46	232
Germany	-	-	2	1	2	-	4	4	3	1	3	-	3	-	-	1	17	7	24
Canada	2	1	-	1	1	2	6	1	4	2	2	4	2	-	3	-	20	11	31
Oth.Pacific	2	-	5	5	15	10	16	13	13	16	10	5	4	4	4	4	69	57	126
Vanuatu	-	2	9	5	14	9	23	13	29	16	14	7	5	2	9	5	103	59	162
Hong Kong	-	-	-	-	1	1	1	4	6	-	3	-	1	-	1	-	13	5	18
Fiji	1	4	15	11	49	22	60	31	48	26	41	19	9	5	6	11	229	129	358
Oth.Asia	7	-	32	19	92	28	136	30	143	20	66	12	15	1	19	4	510	114	624
Netherlands	-	-	-	-	2	1	3	3	3	-	-	-	-	-	-	-	8	4	12
Oth.Europe	3	1	6	8	8	3	9	5	18	9	14	12	9	4	1	3	68	45	113
France	1	-	3	1	-	1	5	1	4	3	-	1	1	-	-	1	14	8	22
Italy	-	-	2	-	-	1	-	1	1	-	1	3	1	-	-	-	5	5	10
China	1	7	11	11	45	28	37	11	28	1	8	3	4	3	13	1	147	65	212
Oth.Country	-	-	-	-	3	2	-	3	5	1	3	-	-	-	1	-	12	6	18
Total	85	73	285	244	568	313	781	333	909	346	683	285	379	142	174	114	3,864	1,850	5,714
Percentage																			
Australia	1.7	1.6	5.8	5.3	8.4	5.3	12.1	5.5	14.2	6.9	12.8	5.6	7.0	2.2	3.0	2.4	65.0	35.0	100.0
PNG	1.7	1.3	1.3	3.4	8.1	11.0	16.9	8.9	21.2	5.1	12.3	2.5	0.8	0.8	2.5	2.1	64.8	35.2	100.0
US	2.1	1.5	2.3	1.3	6.7	4.1	12.9	5.2	10.8	7.0	13.9	7.0	9.5	10.8	2.6	2.3	60.8	39.2	100.0
NZ	1.6	0.9	5.0	3.0	8.4	2.1	9.1	3.9	21.6	5.0	15.5	7.1	10.0	1.4	4.3	1.1	75.6	24.4	100.0
UK	-	1.1	3.3	15.6	10.0	6.7	5.6	3.3	16.7	6.7	12.2	2.2	8.9	5.6	1.1	1.1	57.8	42.2	100.0
Japan	2.2	0.9	5.2	1.3	11.2	4.3	13.8	3.4	13.8	1.7	10.3	3.4	22.8	4.3	0.9	0.4	80.2	19.8	100.0
Germany	-	-	8.3	4.2	8.3	-	16.7	16.7	12.5	4.2	12.5	-	12.5	-	-	4.2	70.8	29.2	100.0
Canada	6.5	3.2	-	3.2	3.2	6.5	19.4	3.2	12.9	6.5	6.5	12.9	6.5	-	9.7	-	64.5	35.5	100.0
Oth.Pacific	1.6	-	4.0	4.0	11.9	7.9	12.7	10.3	10.3	12.7	7.9	4.0	3.2	3.2	3.2	3.2	54.8	45.2	100.0
Vanuatu	-	1.2	5.6	3.1	8.6	5.6	14.2	8.0	17.9	9.9	8.6	4.3	3.1	1.2	5.6	3.1	63.6	36.4	100.0
Hong Kong	-	-	-	-	5.6	5.6	5.6	22.2	33.3	-	16.7	-	5.6	-	5.6	-	72.2	27.8	100.0
Fiji	0.3	1.1	4.2	3.1	13.7	6.1	16.8	8.7	13.4	7.3	11.5	5.3	2.5	1.4	1.7	3.1	64.0	36.0	100.0
Oth.Asia	1.1	-	5.1	3.0	14.7	4.5	21.8	4.8	22.9	3.2	10.6	1.9	2.4	0.2	3.0	0.6	81.7	18.3	100.0
Netherlands	-	-	-	-	16.7	8.3	25.0	25.0	25.0	-	-	-	-	-	-	-	66.7	33.3	100.0
Oth.Europe	2.7	0.9	5.3	7.1	7.1	2.7	8.0	4.4	15.9	8.0	12.4	10.6	8.0	3.5	0.9	2.7	60.2	39.8	100.0
France	4.5	-	13.6	4.5	-	4.5	22.7	4.5	18.2	13.6	-	4.5	4.5	-	-	4.5	63.6	36.4	100.0
Italy	-	-	20.0	-	-	10.0	-	10.0	10.0	-	10.0	30.0	10.0	-	-	-	50.0	50.0	100.0
China	0.5	3.3	5.2	5.2	21.2	13.2	17.5	5.2	13.2	0.5	3.8	1.4	1.9	1.4	6.1	0.5	69.3	30.7	100.0
Oth.Country	-	-	-	-	16.7	11.1	-	16.7	27.8	5.6	16.7	-	-	-	5.6	-	66.7	33.3	100.0
Total	1.5	1.3	5.0	4.3	9.9	5.5	13.7	5.8	15.9	6.1	12.0	5.0	6.6	2.5	3.0	2.0	67.6	32.4	100.0

Chart 6: Visitor Arrivals by Age group category by sex, 3<sup>rd</sup> quarter 2015

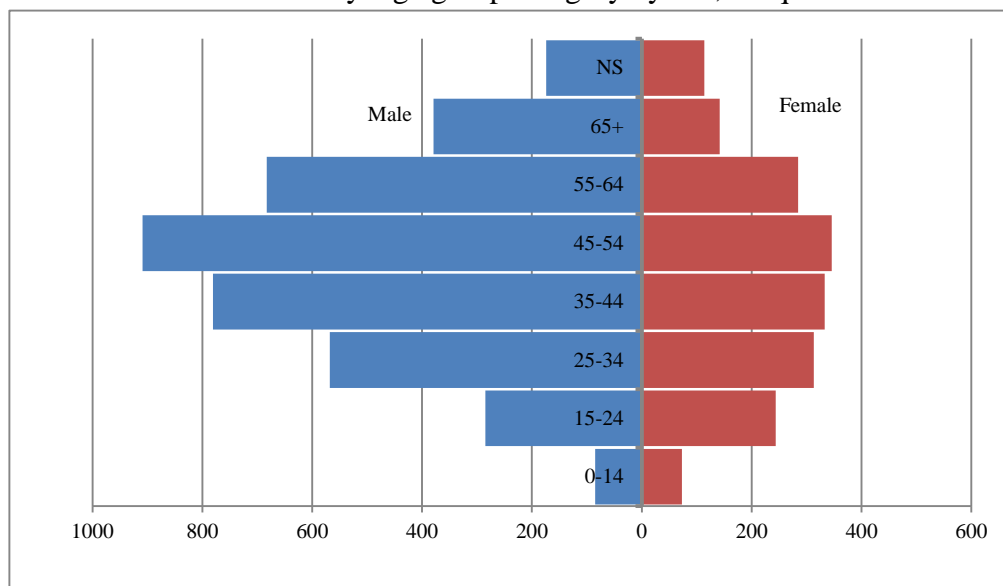


Table 7: Visitor Arrivals by Country of Residence by Occupation and Sex: 3<sup>rd</sup> Quarter 2015

Country of Usual Residence	Professional and Technical		Administration and Managerial		Clerical & Related Work		Sales Worker		Service Worker		Agriculture Forestry Fishery		Production & Related Work		Other		No Work		Total		
	M	F	M	F	M	F	M	F	M	F	M	F	M	F	M	F	M	F	M	F	All
Australia	593	374	191	68	7	15	7	2	70	41	17	4	103	3	566	308	136	94	1,690	909	2,599
PNG	52	35	28	8	5	1	1	-	3	3	1	1	-	-	63	31	-	4	153	83	236
US	90	46	9	5	1	1	1	-	28	5	1	-	3	-	76	53	27	42	236	152	388
NZ	87	36	58	15	2	1	3	-	8	6	3	1	29	1	123	38	19	9	332	107	439
UK	16	24	9	1	-	-	-	-	1	1	-	-	-	-	19	10	7	2	52	38	90
Japan	41	7	10	-	4	3	4	-	3	8	-	-	1	-	82	18	41	10	186	46	232
Germany	5	2	-	1	-	-	-	-	-	1	-	-	-	-	8	3	4	-	17	7	24
Canada	7	4	3	1	-	-	-	-	2	1	-	-	1	-	6	1	2	3	20	11	31
Oth.Pacific	13	18	5	3	-	-	-	-	9	-	-	-	2	-	33	29	7	7	69	57	126
Vanuatu	33	12	6	4	2	1	1	-	5	2	1	1	1	-	48	36	6	3	103	59	162
Hong Kong	1	-	4	1	-	-	1	-	1	1	-	-	-	-	6	3	1	-	13	5	18
Fiji	54	41	34	17	3	3	5	1	2	4	-	-	7	-	120	60	4	6	229	129	358
Oth.Asia	98	37	63	5	3	-	28	3	7	13	18	1	46	2	220	47	27	6	510	114	624
Netherlands	2	-	-	2	-	-	-	-	-	-	-	-	-	-	5	2	1	-	8	4	12
Oth.Europe	28	17	6	6	-	-	-	1	-	1	-	-	2	1	24	9	8	10	68	45	113
France	6	2	-	1	1	-	-	-	1	-	-	-	-	-	6	5	-	-	14	8	22
Italy	3	3	1	1	-	-	-	-	-	1	-	-	-	-	-	-	1	-	5	5	10
China	22	18	24	9	1	-	12	3	1	2	5	2	1	-	37	17	44	14	147	65	212
Oth.Country	7	4	-	-	-	-	-	1	-	-	-	-	-	-	5	-	-	1	12	6	18
Total	1,158	680	451	148	29	22	63	11	138	91	47	10	196	7	1,447	670	335	211	3,864	1,850	5,714
	Percentage																				
Australia	22.8	14.4	7.3	2.6	0.3	0.6	0.3	0.1	2.7	1.6	0.7	0.2	4.0	0.1	21.8	11.9	5.2	3.6	65.0	35.0	100.0
PNG	22.0	14.8	11.9	3.4	2.1	0.4	0.4	-	1.3	1.3	0.4	0.4	-	-	26.7	13.1	-	1.7	64.8	35.2	100.0
US	23.2	11.9	2.3	1.3	0.3	0.3	0.3	-	7.2	1.3	0.3	-	0.8	-	19.6	13.7	7.0	10.8	60.8	39.2	100.0
NZ	19.8	8.2	13.2	3.4	0.5	0.2	0.7	-	1.8	1.4	0.7	0.2	6.6	0.2	28.0	8.7	4.3	2.1	75.6	24.4	100.0
UK	17.8	26.7	10.0	1.1	-	-	-	-	1.1	1.1	-	-	-	-	21.1	11.1	7.8	2.2	57.8	42.2	100.0
Japan	17.7	3.0	4.3	-	1.7	1.3	1.7	-	1.3	3.4	-	-	0.4	-	35.3	7.8	17.7	4.3	80.2	19.8	100.0
Germany	20.8	8.3	-	4.2	-	-	-	-	-	4.2	-	-	-	-	33.3	12.5	16.7	-	70.8	29.2	100.0
Canada	22.6	12.9	9.7	3.2	-	-	-	-	-	6.5	3.2	-	3.2	-	19.4	3.2	6.5	9.7	64.5	35.5	100.0
Oth.Pacific	10.3	14.3	4.0	2.4	-	-	-	-	7.1	-	-	-	1.6	-	26.2	23.0	5.6	5.6	54.8	45.2	100.0
Vanuatu	20.4	7.4	3.7	2.5	1.2	0.6	0.6	-	3.1	1.2	0.6	0.6	0.6	-	29.6	22.2	3.7	1.9	63.6	36.4	100.0
Hong Kong	5.6	-	22.2	5.6	-	-	5.6	-	-	5.6	-	-	-	-	33.3	16.7	5.6	-	72.2	27.8	100.0
Fiji	15.1	11.5	9.5	4.7	0.8	-	1.4	0.3	0.6	1.1	-	-	2.0	-	33.5	16.8	1.1	1.7	64.0	36.0	100.0
Oth.Asia	15.7	5.9	10.1	0.8	0.5	-	4.5	0.5	1.1	2.1	2.9	0.2	7.4	0.3	35.3	7.5	4.3	1.0	81.7	18.3	100.0
Netherlands	16.7	-	-	16.7	-	-	-	-	-	-	-	-	-	-	41.7	16.7	8.3	-	66.7	33.3	100.0
Oth.Europe	24.8	15.0	5.3	5.3	-	-	-	0.9	-	0.9	-	-	1.8	0.9	21.2	8.0	7.1	8.8	60.2	39.8	100.0
France	27.3	9.1	-	4.5	4.5	-	-	-	4.5	-	-	-	-	-	27.3	22.7	-	-	63.6	36.4	100.0
Italy	30.0	30.0	10.0	10.0	-	-	-	-	-	10.0	-	-	-	-	-	-	10.0	-	50.0	50.0	100.0
China	10.4	8.5	11.3	4.2	0.5	-	5.7	1.4	0.5	0.9	2.4	0.9	0.5	-	17.5	8.0	20.8	6.6	69.3	30.7	100.0
Oth.Country	38.9	22.2	-	-	-	-	-	5.6	-	-	-	-	-	-	27.8	-	-	5.6	66.7	33.3	100.0
Total	20.3	11.9	7.9	2.6	0.5	0.4	1.1	0.2	2.4	1.6	0.8	0.2	3.4	0.1	25.3	11.7	5.9	3.7	67.6	32.4	100.0

Chart 7: Visitors Arrival by occupation by sex, 3<sup>rd</sup> quarter 2015

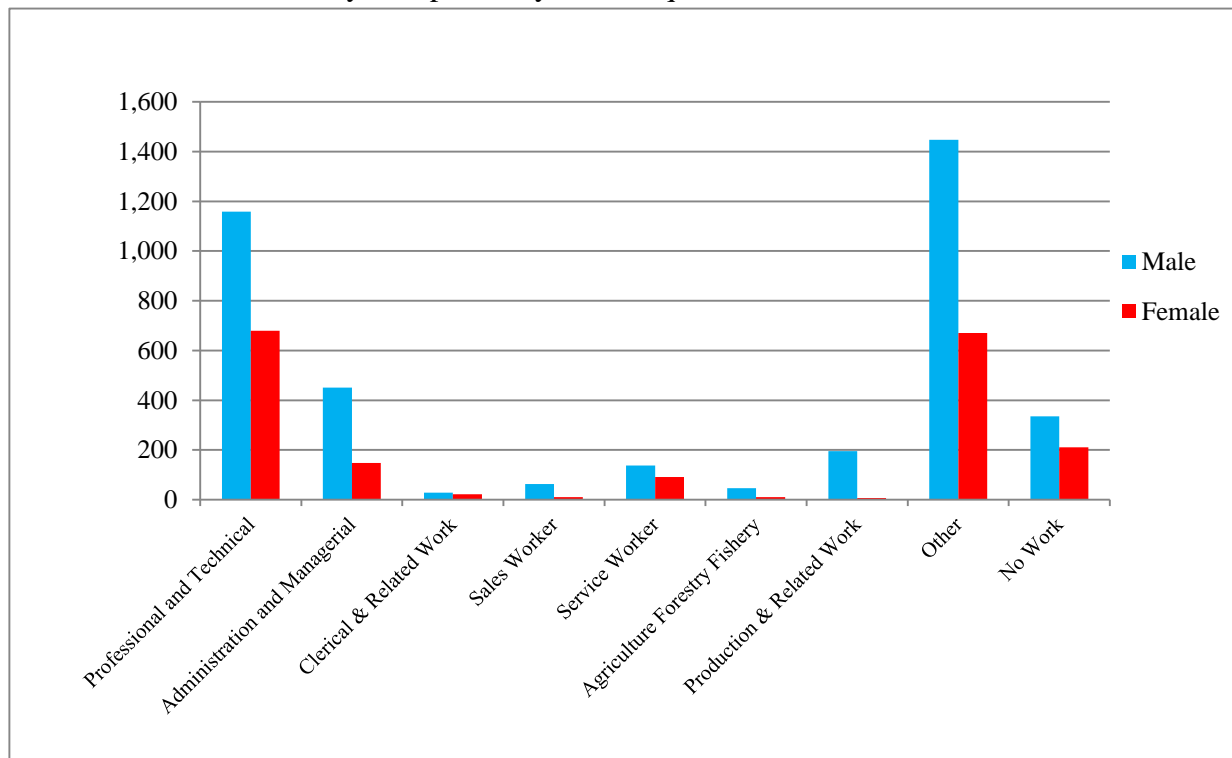
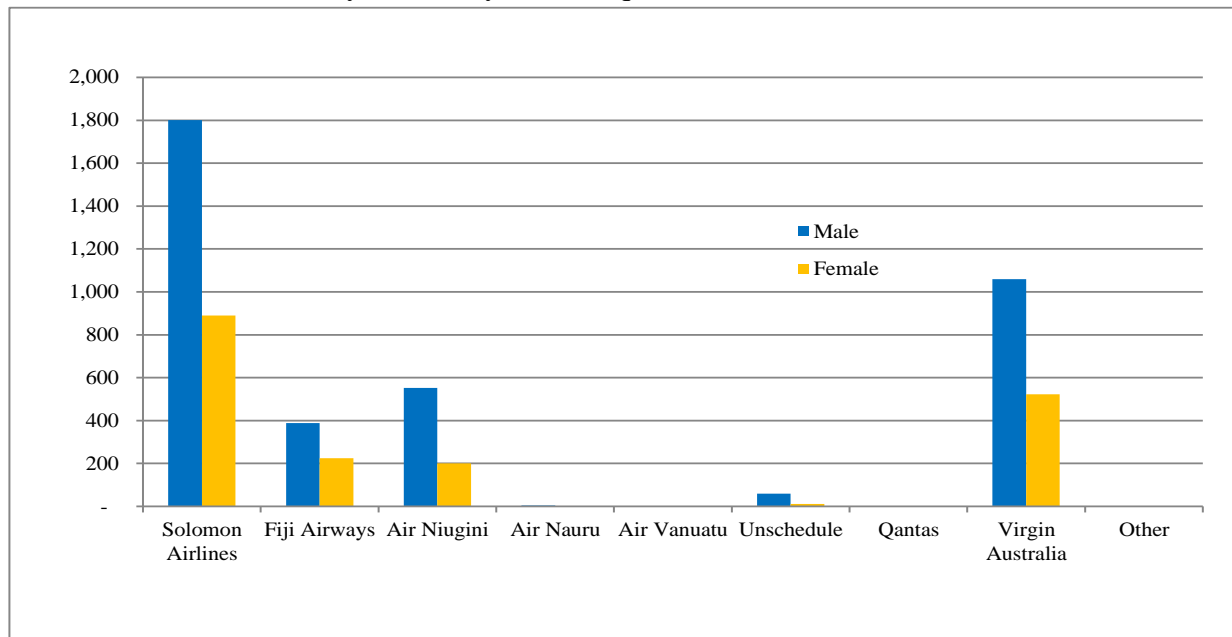


Table 8: Visitor Arrivals by Country of residence by Carrier by Sex: 3<sup>rd</sup> Quarter 2015

Country of Usual Residence	Solomon Airlines		Fiji Airways		Air Niugini		Air Nauru		Air Vanuatu		Unschedule		Qantas		Virgin Australia		Total		
	M	F	M	F	M	F	M	F	M	F	M	F	M	F	M	F	M	F	All
	Australia	1031	578	15	19	29	11	1	-	-	-	26	9	-	-	588	292	1,690	909
PNG	11	3	8	-	124	79	-	-	-	-	-	-	-	-	10	1	153	83	236
US	63	34	79	55	20	4	-	-	-	-	29	2	-	-	45	57	236	152	388
NZ	127	31	20	5	7	1	-	-	-	-	1	-	-	-	177	70	332	107	439
UK	21	16	6	4	8	2	-	-	-	-	-	-	-	-	17	16	52	38	90
Japan	45	13	13	7	108	17	-	-	-	-	-	-	-	-	20	9	186	46	232
Germany	9	3	2	1	2	-	-	-	-	-	-	-	-	-	4	3	17	7	24
Canada	9	2	5	4	3	-	-	-	-	-	1	-	-	-	2	5	20	11	31
Oth.Pacific	30	29	25	20	4	5	-	-	-	-	-	-	-	-	10	3	69	57	126
Vanuatu	47	35	40	19	13	4	-	-	-	-	-	-	-	-	3	1	103	59	162
Hong Kong	7	3	1	-	3	1	-	-	-	-	-	-	-	-	2	1	13	5	18
Fiji	70	46	129	73	21	7	-	1	-	-	-	-	-	-	9	2	229	129	358
Oth.Asia	276	59	15	3	96	18	2	-	-	-	2	-	1	-	118	34	510	114	624
Netherlands	3	-	1	2	1	1	-	-	-	-	-	-	-	-	3	1	8	4	12
Oth.Europe	24	19	3	4	11	7	1	-	-	-	-	-	-	-	29	15	68	45	113
France	4	5	2	2	-	-	-	-	-	-	-	-	-	-	8	1	14	8	22
Italy	2	4	-	-	2	-	-	-	-	-	-	-	-	-	1	1	5	5	10
China	17	8	19	6	100	44	-	-	-	-	-	-	-	-	11	7	147	65	212
Oth.Country	5	2	5	1	-	-	-	-	-	-	-	-	-	-	2	3	12	6	18
<b>Total</b>	<b>1,801</b>	<b>890</b>	<b>388</b>	<b>225</b>	<b>552</b>	<b>201</b>	<b>4</b>	<b>1</b>	<b>-</b>	<b>-</b>	<b>59</b>	<b>11</b>	<b>1</b>	<b>-</b>	<b>1,059</b>	<b>522</b>	<b>3,864</b>	<b>1,850</b>	<b>5,714</b>
	<b>Percentage</b>																		
Australia	39.7	22.2	0.6	0.7	1.1	0.4	-	-	-	-	1.0	0.3	-	-	22.6	11.2	65.0	35.0	100.0
PNG	4.7	1.3	3.4	-	52.5	33.5	-	-	-	-	-	-	-	-	4.2	0.4	64.8	35.2	100.0
US	16.2	8.8	20.4	14.2	5.2	1.0	-	-	-	-	7.5	0.5	-	-	11.6	14.7	60.8	39.2	100.0
NZ	28.9	7.1	4.6	1.1	1.6	0.2	-	-	-	-	0.2	-	-	-	40.3	15.9	75.6	24.4	100.0
UK	23.3	17.8	6.7	4.4	8.9	2.2	-	-	-	-	-	-	-	-	18.9	17.8	57.8	42.2	100.0
Japan	19.4	5.6	5.6	3.0	46.6	7.3	-	-	-	-	-	-	-	-	8.6	3.9	80.2	19.8	100.0
Germany	37.5	12.5	8.3	4.2	8.3	-	-	-	-	-	-	-	-	-	16.7	12.5	70.8	29.2	100.0
Canada	29.0	6.5	16.1	12.9	9.7	-	-	-	-	-	3.2	-	-	-	6.5	16.1	64.5	35.5	100.0
Oth.Pacific	23.8	23.0	19.8	15.9	3.2	4.0	-	-	-	-	-	-	-	-	7.9	2.4	54.8	45.2	100.0
Vanuatu	29.0	21.6	24.7	11.7	8.0	2.5	-	-	-	-	-	-	-	-	1.9	0.6	63.6	36.4	100.0
Hong Kong	38.9	16.7	5.6	-	16.7	5.6	-	-	-	-	-	-	-	-	11.1	5.6	72.2	27.8	100.0
Fiji	19.6	12.8	36.0	20.4	5.9	2.0	-	0.3	-	-	-	-	-	-	2.5	0.6	64.0	36.0	100.0
Oth.Asia	44.2	9.5	2.4	0.5	15.4	2.9	0.3	-	-	-	0.3	-	0.2	-	18.9	5.4	81.7	18.3	100.0
Netherlands	25.0	-	8.3	16.7	8.3	8.3	-	-	-	-	-	-	-	-	25.0	8.3	66.7	33.3	100.0
Oth.Europe	21.2	16.8	2.7	3.5	9.7	6.2	0.9	-	-	-	-	-	-	-	25.7	13.3	60.2	39.8	100.0
France	18.2	22.7	9.1	9.1	-	-	-	-	-	-	-	-	-	-	36.4	4.5	63.6	36.4	100.0
Italy	20.0	40.0	-	-	20.0	-	-	-	-	-	-	-	-	-	10.0	10.0	50.0	50.0	100.0
China	8.0	3.8	9.0	2.8	47.2	20.8	-	-	-	-	-	-	-	-	5.2	3.3	69.3	30.7	100.0
Oth.Country	27.8	11.1	27.8	5.6	-	-	-	-	-	-	-	-	-	-	11.1	16.7	66.7	33.3	100.0
<b>Total</b>	<b>31.5</b>	<b>15.6</b>	<b>6.8</b>	<b>3.9</b>	<b>9.7</b>	<b>3.5</b>	<b>0.1</b>	<b>-</b>	<b>-</b>	<b>-</b>	<b>1.0</b>	<b>0.2</b>	<b>-</b>	<b>-</b>	<b>18.5</b>	<b>9.1</b>	<b>67.6</b>	<b>32.4</b>	<b>100.0</b>

Chart 8: Visitor Arrivals by Carrier by Sex, 3<sup>rd</sup> quarter 2015



## Appendix 1

### Concepts and Definitions

Persons entering Solomon Islands classify themselves into three (3) categories; returning resident, intending resident, and visitor. The concepts and definitions of the various categories are as follows:

#### *(i) Returning residents*

- Solomon Islanders and non-Solomon Islanders who have left the country and are returning to continue their residence.
- Non Solomon Islanders includes resident permit holders and Diplomatic officials, and their immediate family members. This may also includes legal or official arrangements that fall out side of the above.

#### *(ii) Intending residents*

- Non-Solomon Islander who wish to take up residence in Solomon Islands.

#### *(iii) Visitors*

- Any traveller who is not a Solomon Islander and who purposely spend less time – at most a period of 120 days<sup>2</sup>, in the country and with the intention and purpose of visiting.
- *Tourist*
  - Visitors who further classify themselves stating their visit are purposely for '*holiday and vacation*'. This exclude, tourist arrivals by cruise ships.
  - Wife accompanying husband on business purpose is a private tourist unless also working.
  - *World Tourism Organization WTO definition of Tourism:*  
*It comprises the activities of persons travelling to and staying in places outside their usual environment for not more than one consecutive year for leisure, business and other purposes not related to the exercise of an activity remunerated from within the place visited*<sup>3</sup>.

#### *( iv) Markets*

- *Country of Usual Residence*

---

<sup>2</sup> Solomon Islands 1993 Statistical Yearbook.

<sup>3</sup> Dimensions of Hospitality, Study guide 1. p17

Appendix 2

Table 9: Intending Resident Arrivals by Country of Residence by Occupation and Sex: 3<sup>rd</sup> Quarter 2015

Country of Usual Residence	Professional and Technical		Administration and Managerial		Clerical & Related Work		Sales Worker		Service Worker		Agriculture Forestry Fishery		Production & Related Work		Other		No Work		Total		
	M	F	M	F	M	F	M	F	M	F	M	F	M	F	M	F	M	F	M	F	All
Australia	6	4	3	1	1	1	1	-	15	4	-	-	-	-	5	11	7	9	38	30	68
PNG	2	-	2	-	-	-	-	-	1	1	-	-	-	-	-	3	-	-	5	4	9
US	1	-	-	-	-	-	-	-	-	1	-	-	-	-	1	3	2	1	4	5	9
NZ	1	1	1	-	-	-	-	-	4	1	-	-	-	-	2	2	1	-	9	4	13
UK	-	1	-	-	-	-	-	-	-	-	-	-	-	-	-	-	-	-	-	1	1
Japan	4	-	-	-	1	-	-	-	-	-	-	-	-	-	2	2	-	-	7	2	9
Germany	1	-	-	-	-	-	-	-	-	-	-	-	-	-	1	-	-	-	2	-	2
Canada	1	-	-	-	-	-	-	-	-	-	-	-	-	-	-	-	-	-	1	-	1
Oth.Pacific	3	-	-	-	-	-	-	-	3	1	-	-	-	-	-	1	-	-	6	2	8
Vanuatu	1	-	-	-	-	-	-	-	-	-	-	-	-	-	3	1	-	-	4	1	5
Hong Kong	-	-	-	-	-	-	-	-	-	-	-	-	-	-	1	-	-	-	1	-	1
Fiji	2	2	1	-	-	-	-	-	1	-	-	-	2	-	4	4	1	-	11	6	17
Oth.Asia	14	8	24	9	1	-	5	-	-	1	4	-	40	1	76	4	13	3	177	26	203
Netherlands	-	-	1	1	-	-	-	-	-	-	-	-	-	-	-	1	-	-	1	2	3
Oth.Europe	1	-	-	-	1	-	-	-	-	1	-	-	1	-	-	-	-	1	3	2	5
France	-	-	-	-	-	-	-	-	-	-	-	-	-	-	-	-	-	-	-	-	-
Italy	-	-	-	-	-	-	-	-	-	-	-	-	-	-	-	-	-	-	-	-	-
China	6	3	12	3	2	1	3	5	2	1	8	4	1	-	22	12	22	12	78	41	119
Oth.Country	-	-	-	-	-	-	-	-	-	-	-	-	-	-	-	-	1	1	1	1	2
<b>Total</b>	<b>43</b>	<b>19</b>	<b>44</b>	<b>14</b>	<b>6</b>	<b>2</b>	<b>9</b>	<b>5</b>	<b>26</b>	<b>11</b>	<b>12</b>	<b>4</b>	<b>44</b>	<b>1</b>	<b>117</b>	<b>44</b>	<b>47</b>	<b>27</b>	<b>348</b>	<b>127</b>	<b>475</b>
	Percentage																				
Australia	8.8	5.9	4.4	1.5	1.5	1.5	1.5	-	22.1	5.9	-	-	-	-	7.4	16.2	10.3	13.2	55.9	44.1	100.0
PNG	22.2	-	22.2	-	-	-	-	-	11.1	11.1	-	-	-	-	-	33.3	-	-	55.6	44.4	100.0
US	11.1	-	-	-	-	-	-	-	-	11.1	-	-	-	-	11.1	33.3	22.2	11.1	44.4	55.6	100.0
NZ	7.7	7.7	7.7	-	-	-	-	-	30.8	7.7	-	-	-	-	15.4	15.4	7.7	-	69.2	30.8	100.0
UK	-	100.0	-	-	-	-	-	-	-	-	-	-	-	-	-	-	-	-	-	100.0	100.0
Japan	44.4	-	-	-	11.1	-	-	-	-	-	-	-	-	-	22.2	22.2	-	-	77.8	22.2	100.0
Germany	50.0	-	-	-	-	-	-	-	-	-	-	-	-	-	50.0	-	-	-	100.0	-	100.0
Canada	100.0	-	-	-	-	-	-	-	-	-	-	-	-	-	-	-	-	-	100.0	-	100.0
Oth.Pacific	37.5	-	-	-	-	-	-	-	37.5	12.5	-	-	-	-	-	12.5	-	-	75.0	25.0	100.0
Vanuatu	20.0	-	-	-	-	-	-	-	-	-	-	-	-	-	60.0	20.0	-	-	80.0	20.0	100.0
Hong Kong	-	-	-	-	-	-	-	-	-	-	-	-	-	-	100.0	-	-	-	100.0	-	100.0
Fiji	11.8	11.8	5.9	-	-	-	-	-	5.9	-	-	-	11.8	-	23.5	23.5	5.9	-	64.7	35.3	100.0
Oth.Asia	6.9	3.9	11.8	4.4	0.5	-	2.5	-	-	0.5	2.0	-	19.7	0.5	37.4	2.0	6.4	1.5	87.2	12.8	100.0
Netherlands	-	-	33.3	33.3	-	-	-	-	-	-	-	-	-	-	-	33.3	-	-	33.3	66.7	100.0
Oth.Europe	20.0	-	-	-	20.0	-	-	-	-	20.0	-	-	20.0	-	-	-	-	20.0	60.0	40.0	100.0
France	-	-	-	-	-	-	-	-	-	-	-	-	-	-	-	-	-	-	-	-	-
Italy	-	-	-	-	-	-	-	-	-	-	-	-	-	-	-	-	-	-	-	-	-
China	5.0	2.5	10.1	2.5	1.7	0.8	2.5	4.2	1.7	0.8	6.7	3.4	0.8	-	18.5	10.1	18.5	10.1	65.5	34.5	100.0
Oth.Country	-	-	-	-	-	-	-	-	-	-	-	-	-	-	-	-	50.0	50.0	50.0	50.0	100.0
<b>Total</b>	<b>9.1</b>	<b>4.0</b>	<b>9.3</b>	<b>2.9</b>	<b>1.3</b>	<b>0.4</b>	<b>1.9</b>	<b>1.1</b>	<b>5.5</b>	<b>2.3</b>	<b>2.5</b>	<b>0.8</b>	<b>9.3</b>	<b>0.2</b>	<b>24.6</b>	<b>9.3</b>	<b>9.9</b>	<b>5.7</b>	<b>73.3</b>	<b>26.7</b>	<b>100.0</b>

Table 10: Intending Resident Arrivals by Country of Residence by Age Groups by Sex: 3<sup>rd</sup> Quarter 2015

Country of Usual Residence	Age-Group																		Total		
	0-14		15-24		25-34		35-44		45-54		55-64		65+		Not Stated		M	F	All		
	M	F	M	F	M	F	M	F	M	F	M	F	M	F							
Australia	5	5	-	-	6	2	11	9	6	6	5	3	2	-	3	5	38	30	68		
PNG	-	-	-	-	2	1	1	-	2	1	-	-	-	-	-	2	5	4	9		
US	-	-	-	-	-	-	1	2	2	1	-	1	-	-	1	1	4	5	9		
NZ	1	-	-	-	3	1	1	1	2	1	-	-	2	1	-	-	9	4	13		
UK	-	-	-	-	-	1	-	-	-	-	-	-	-	-	-	-	-	1	1		
Japan	-	-	-	-	3	1	2	-	2	1	-	-	-	-	-	-	7	2	9		
Germany	-	-	-	-	-	-	-	-	-	-	1	-	-	-	1	-	2	-	2		
Canada	-	-	-	-	-	-	-	-	-	-	-	-	-	-	1	-	1	-	1		
Oth.Pacific	-	-	3	-	-	-	1	1	2	1	-	-	-	-	-	-	6	2	8		
Vanuatu	-	-	2	-	-	1	-	-	1	-	-	-	1	-	-	-	4	1	5		
Hong Kong	-	-	-	-	-	-	-	-	-	-	1	-	-	-	-	-	1	-	1		
Fiji	-	1	-	2	1	-	2	1	3	1	4	1	1	-	-	-	11	6	17		
Oth.Asia	-	2	10	3	42	8	54	2	43	3	19	4	1	-	8	4	177	26	203		
Netherlands	-	1	-	-	-	-	1	1	-	-	-	-	-	-	-	-	1	2	3		
Oth.Europe	-	-	-	-	2	1	-	-	1	-	-	-	-	1	-	-	3	2	5		
France	-	-	-	-	-	-	-	-	-	-	-	-	-	-	-	-	-	-	-		
Italy	-	-	-	-	-	-	-	-	-	-	-	-	-	-	-	-	-	-	-		
China	1	1	15	8	32	23	14	2	8	2	2	2	1	-	5	3	78	41	119		
Oth.Country	-	-	-	-	-	-	-	-	-	-	-	1	1	-	-	-	1	1	2		
Total	7	10	30	13	91	39	88	19	72	17	32	12	9	2	19	15	348	127	475		
	Percentage																				
Australia	7.4	7.4	-	-	8.8	2.9	16.2	13.2	8.8	8.8	7.4	4.4	2.9	-	4.4	7.4	55.9	44.1	100.0		
PNG	-	-	-	-	22.2	11.1	11.1	-	22.2	11.1	-	-	-	-	-	22.2	55.6	44.4	100.0		
US	-	-	-	-	-	-	11.1	22.2	22.2	11.1	-	11.1	-	-	11.1	11.1	44.4	55.6	100.0		
NZ	7.7	-	-	-	23.1	7.7	7.7	7.7	15.4	7.7	-	-	15.4	7.7	-	-	69.2	30.8	100.0		
UK	-	-	-	-	-	100.0	-	-	-	-	-	-	-	-	-	-	-	100.0	100.0		
Japan	-	-	-	-	33.3	11.1	22.2	-	22.2	11.1	-	-	-	-	-	-	77.8	22.2	100.0		
Germany	-	-	-	-	-	-	-	-	-	-	50.0	-	-	-	50.0	-	100.0	-	100.0		
Canada	-	-	-	-	-	-	-	-	-	-	-	-	-	-	100.0	-	100.0	-	100.0		
Oth.Pacific	-	-	37.5	-	-	-	12.5	12.5	25.0	12.5	-	-	-	-	-	-	75.0	25.0	100.0		
Vanuatu	-	-	40.0	-	-	20.0	-	-	20.0	-	-	-	20.0	-	-	-	80.0	20.0	100.0		
Hong Kong	-	-	-	-	-	-	-	-	-	-	100.0	-	-	-	-	-	100.0	-	100.0		
Fiji	-	5.9	-	11.8	5.9	-	11.8	5.9	17.6	5.9	23.5	5.9	5.9	-	-	-	64.7	35.3	100.0		
Oth.Asia	-	1.0	4.9	1.5	20.7	3.9	26.6	1.0	21.2	1.5	9.4	2.0	-	-	3.9	2.0	87.2	12.8	100.0		
Netherlands	-	33.3	-	-	-	-	33	33	-	-	-	-	-	-	-	-	33.3	66.7	100.0		
Oth.Europe	-	-	-	-	40.0	20.0	-	-	20.0	-	-	-	-	20.0	-	-	60.0	40.0	100.0		
France	-	-	-	-	-	-	-	-	-	-	-	-	-	-	-	-	-	-	-		
Italy	-	-	-	-	-	-	-	-	-	-	-	-	-	-	-	-	-	-	-		
China	0.8	0.8	12.6	6.7	26.9	19.3	11.8	1.7	6.7	1.7	1.7	1.7	0.8	-	4.2	2.5	65.5	34.5	100.0		
Oth.Country	-	-	-	-	-	-	-	-	-	-	-	50.0	50.0	-	-	-	50.0	50.0	100.0		
Total	1.5	2.1	6.3	2.7	19.2	8.2	18.5	4.0	15.2	3.6	6.7	2.5	1.9	0.4	4.0	3.2	73.3	26.7	100.0		



Table 11: Returning Resident Arrivals by Country of Residence by Age Groups by Sex: 3<sup>rd</sup> Quarter 2015

Country of Usual Residence	Age-Group																		Total		
	0-14		15-24		25-34		35-44		45-54		55-64		65+		Not Stated		M	F	All		
	M	F	M	F	M	F	M	F	M	F	M	F	M	F	M	F	M	F	All		
Australia	-	-	-	-	-	-	-	-	-	-	-	-	-	-	-	-	-	-	-		
PNG	-	-	-	-	-	-	-	-	-	-	-	-	-	-	-	-	-	-	-		
US	-	-	-	-	-	-	-	-	-	-	-	-	-	-	-	-	-	-	-		
NZ	-	-	-	-	-	-	-	-	-	-	-	-	-	-	-	-	-	-	-		
UK	-	-	-	-	-	-	-	-	-	-	-	-	-	-	-	-	-	-	-		
Japan	-	2	3	2	2	1	4	1	3	-	1	-	1	-	-	-	14	6	20		
Germany	-	-	-	-	-	-	-	-	-	-	-	-	-	-	-	-	-	-	-		
Canada	-	-	-	-	-	-	-	-	-	-	-	-	-	-	-	-	-	-	-		
Oth.Pacific	-	-	-	-	-	-	-	-	-	-	-	-	-	-	-	-	-	-	-		
Vanuatu	-	-	-	-	-	-	-	-	-	-	-	-	-	-	-	-	-	-	-		
Hong Kong	-	-	-	-	-	-	-	-	-	-	-	-	-	-	-	-	-	-	-		
Fiji	-	-	-	-	-	-	-	-	-	-	-	-	-	-	-	-	-	-	-		
Oth.Asia	-	-	-	-	-	-	-	-	-	-	-	-	-	-	-	-	-	-	-		
Netherlands	-	-	-	-	-	-	-	-	-	-	-	-	-	-	-	-	-	-	-		
Oth.Europe	-	-	-	-	-	-	-	-	-	-	-	-	-	-	-	-	-	-	-		
France	-	-	-	-	-	-	-	-	-	-	-	-	-	-	-	-	-	-	-		
Italy	-	-	-	-	-	-	-	-	-	-	-	-	-	-	-	-	-	-	-		
China	-	-	-	-	-	-	-	-	-	-	-	-	-	-	-	-	-	-	-		
Oth.Country	-	-	-	-	-	-	-	-	-	-	-	-	-	-	-	-	-	-	-		
Solomon Is.	103	99	294	198	602	380	752	415	617	330	324	128	94	18	236	181	3,022	1,749	4,771		
Total	103	101	297	200	604	381	756	416	620	330	325	128	95	18	236	181	3,036	1,755	4,791		

Country of Usual Residence	Percentage																		Total		
	M	F	M	F	M	F	M	F	M	F	M	F	M	F	M	F	M	F	All		
Australia	-	-	-	-	-	-	-	-	-	-	-	-	-	-	-	-	-	-	-		
PNG	-	-	-	-	-	-	-	-	-	-	-	-	-	-	-	-	-	-	-		
US	-	-	-	-	-	-	-	-	-	-	-	-	-	-	-	-	-	-	-		
NZ	-	-	-	-	-	-	-	-	-	-	-	-	-	-	-	-	-	-	-		
UK	-	-	-	-	-	-	-	-	-	-	-	-	-	-	-	-	-	-	-		
Japan	-	10.0	15.0	10.0	10.0	5.0	20.0	5.0	15.0	-	5.0	-	5.0	-	-	-	70.0	30.0	100.0		
Germany	-	-	-	-	-	-	-	-	-	-	-	-	-	-	-	-	-	-	-		
Canada	-	-	-	-	-	-	-	-	-	-	-	-	-	-	-	-	-	-	-		
Oth.Pacific	-	-	-	-	-	-	-	-	-	-	-	-	-	-	-	-	-	-	-		
Vanuatu	-	-	-	-	-	-	-	-	-	-	-	-	-	-	-	-	-	-	-		
Hong Kong	-	-	-	-	-	-	-	-	-	-	-	-	-	-	-	-	-	-	-		
Fiji	-	-	-	-	-	-	-	-	-	-	-	-	-	-	-	-	-	-	-		
Oth.Asia	-	-	-	-	-	-	-	-	-	-	-	-	-	-	-	-	-	-	-		
Netherlands	-	-	-	-	-	-	-	-	-	-	-	-	-	-	-	-	-	-	-		
Oth.Europe	-	-	-	-	-	-	-	-	-	-	-	-	-	-	-	-	-	-	-		
France	-	-	-	-	-	-	-	-	-	-	-	-	-	-	-	-	-	-	-		
Italy	-	-	-	-	-	-	-	-	-	-	-	-	-	-	-	-	-	-	-		
China	-	-	-	-	-	-	-	-	-	-	-	-	-	-	-	-	-	-	-		
Oth.Country	-	-	-	-	-	-	-	-	-	-	-	-	-	-	-	-	-	-	-		
Solomon Is.	2.2	2.1	6.2	4.2	12.6	8.0	15.8	8.7	12.9	6.9	6.8	2.7	2.0	0.4	4.9	3.8	63.3	36.7	100.0		
Total	2.1	2.1	6.2	4.2	12.6	8.0	15.8	8.7	12.9	6.9	6.8	2.7	2.0	0.4	4.9	3.8	63.4	36.6	100.0		

Table 12: Returning Resident Arrivals by Country of Residence by Occupation and Sex: 3<sup>rd</sup> Quarter 2015

Country of Usual Residence	Professional and Technical		Administration and Managerial		Clerical & Related Work		Sales Worker		Service Worker		Agriculture Forestry Fishery		Production & Related Work		Other		No Work		Total		
	M	F	M	F	M	F	M	F	M	F	M	F	M	F	M	F	M	F	M	F	All
Australia	-	-	-	-	-	-	-	-	-	-	-	-	-	-	-	-	-	-	-	-	-
PNG	-	-	-	-	-	-	-	-	-	-	-	-	-	-	-	-	-	-	-	-	-
US	-	-	-	-	-	-	-	-	-	-	-	-	-	-	-	-	-	-	-	-	-
NZ	-	-	-	-	-	-	-	-	-	-	-	-	-	-	-	-	-	-	-	-	-
UK	-	-	-	-	-	-	-	-	-	-	-	-	-	-	-	-	-	-	-	-	-
Japan	6	2	4	1	-	-	-	-	-	-	1	-	-	-	3	2	-	1	14	6	20
Germany	-	-	-	-	-	-	-	-	-	-	-	-	-	-	-	-	-	-	-	-	-
Canada	-	-	-	-	-	-	-	-	-	-	-	-	-	-	-	-	-	-	-	-	-
Oth.Pacific	-	-	-	-	-	-	-	-	-	-	-	-	-	-	-	-	-	-	-	-	-
Vanuatu	-	-	-	-	-	-	-	-	-	-	-	-	-	-	-	-	-	-	-	-	-
Hong Kong	-	-	-	-	-	-	-	-	-	-	-	-	-	-	-	-	-	-	-	-	-
Fiji	-	-	-	-	-	-	-	-	-	-	-	-	-	-	-	-	-	-	-	-	-
Oth.Asia	-	-	-	-	-	-	-	-	-	-	-	-	-	-	-	-	-	-	-	-	-
Netherlands	-	-	-	-	-	-	-	-	-	-	-	-	-	-	-	-	-	-	-	-	-
Oth.Europe	-	-	-	-	-	-	-	-	-	-	-	-	-	-	-	-	-	-	-	-	-
France	-	-	-	-	-	-	-	-	-	-	-	-	-	-	-	-	-	-	-	-	-
Italy	-	-	-	-	-	-	-	-	-	-	-	-	-	-	-	-	-	-	-	-	-
China	-	-	-	-	-	-	-	-	-	-	-	-	-	-	-	-	-	-	-	-	-
Oth.Country	-	-	-	-	-	-	-	-	-	-	-	-	-	-	-	-	-	-	-	-	-
Solomon Is.	1,020	569	278	134	39	26	48	7	77	142	48	6	103	6	1,141	642	268	217	3,022	1,749	4,771
Total	1,026	571	282	135	39	26	48	7	77	142	49	6	103	6	1,144	644	268	218	3,036	1,755	4,791
Percentage																					
Australia	-	-	-	-	-	-	-	-	-	-	-	-	-	-	-	-	-	-	-	-	-
PNG	-	-	-	-	-	-	-	-	-	-	-	-	-	-	-	-	-	-	-	-	-
US	-	-	-	-	-	-	-	-	-	-	-	-	-	-	-	-	-	-	-	-	-
NZ	-	-	-	-	-	-	-	-	-	-	-	-	-	-	-	-	-	-	-	-	-
UK	-	-	-	-	-	-	-	-	-	-	-	-	-	-	-	-	-	-	-	-	-
Japan	30.0	10.0	20.0	5.0	-	-	-	-	-	-	5.0	-	-	-	15.0	10.0	-	5.0	70.0	30.0	100.0
Germany	-	-	-	-	-	-	-	-	-	-	-	-	-	-	-	-	-	-	-	-	-
Canada	-	-	-	-	-	-	-	-	-	-	-	-	-	-	-	-	-	-	-	-	-
Oth.Pacific	-	-	-	-	-	-	-	-	-	-	-	-	-	-	-	-	-	-	-	-	-
Vanuatu	-	-	-	-	-	-	-	-	-	-	-	-	-	-	-	-	-	-	-	-	-
Hong Kong	-	-	-	-	-	-	-	-	-	-	-	-	-	-	-	-	-	-	-	-	-
Fiji	-	-	-	-	-	-	-	-	-	-	-	-	-	-	-	-	-	-	-	-	-
Oth.Asia	-	-	-	-	-	-	-	-	-	-	-	-	-	-	-	-	-	-	-	-	-
Netherlands	-	-	-	-	-	-	-	-	-	-	-	-	-	-	-	-	-	-	-	-	-
Oth.Europe	-	-	-	-	-	-	-	-	-	-	-	-	-	-	-	-	-	-	-	-	-
France	-	-	-	-	-	-	-	-	-	-	-	-	-	-	-	-	-	-	-	-	-
Italy	-	-	-	-	-	-	-	-	-	-	-	-	-	-	-	-	-	-	-	-	-
China	-	-	-	-	-	-	-	-	-	-	-	-	-	-	-	-	-	-	-	-	-
Oth.Country	-	-	-	-	-	-	-	-	-	-	-	-	-	-	-	-	-	-	-	-	-
Solomon Is.	21.4	11.9	5.8	2.8	0.8	0.5	1.0	0.1	1.6	3.0	1.0	0.1	2.2	0.1	23.9	13.5	5.6	4.5	63.3	36.7	100.0
Total	21.4	11.9	5.9	2.8	0.8	0.5	1.0	0.1	1.6	3.0	1.0	0.1	2.1	0.1	23.9	13.4	5.6	4.6	63.4	36.6	100.0