



Solomon Islands Government

Statistical Bulletin: 04 /2011

**HONIARA CONSUMER PRICE INDEX
(March 2011)**

**Solomon Islands National Statistics Office
Ministry of Finance & Treasury
PO Box G6
Honiara**

Enquiries: Tel: (677) 27835, Email: STATS-Economics@mof.gov.sb

Table of Contents

Commentary	3
Table 1: THE HONIARA CONSUMER PRICE INDEX BY GROUP (4th Qtr 2005 =100).....	4
a) On the same month a year ago.....	4
b) 3 months moving average on same period a year ago.....	4
TABLE 2: PRICE INDEX OF IMPORTED ITEMS BY GROUP (4th Qtr 2005 =100).....	5
(a) On the same month a year ago.....	5
(b) 3 months moving average on same period a year ago.....	5
TABLE 3: PRICE INDEX OF OTHER ITEMS BY GROUP	6
(a) On the same month a year ago.....	6
(b) 3 months moving average on same period a year ago.....	6
TABLE 4: THE HONIARA CONSUMER PRICE INDEX BY GROUP (Spliced Series)	7
(a) 12 months moving average on same period a year ago.....	7
TABLE 5: COMPARATIVE PRICE OF SELECTED COMMODITIES.....	8

Commentary

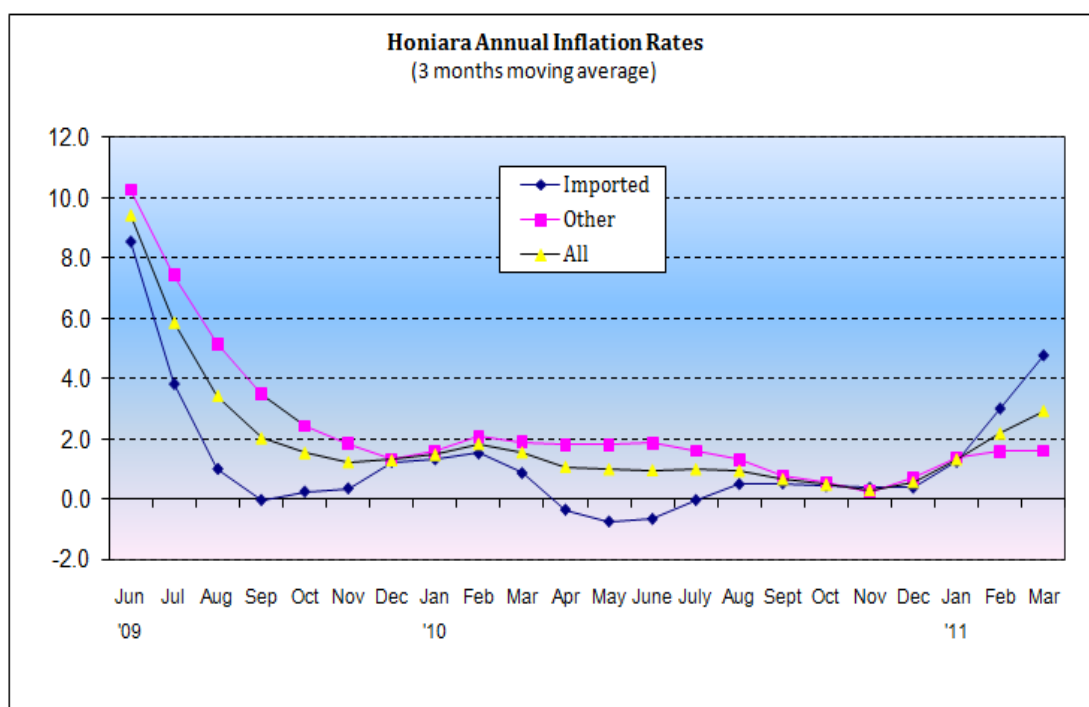
The Honiara Consumers Price Index for March 2011 rose 1.1% from 152.9 in February to 154.5. The increase was largely driven by a general rise in food and fuel prices.

The domestic Food sub-index rose 2.8% on account of increases in the prices of flour, which went up 2.6% to \$191.67/25kg bag, cabin biscuit 4.3% to \$1.83/pkt, coconut biscuit 2.6% to \$2.33/pkt and fresh fruit & vegetables at the Honiara market, notably slippery cabbage (up 21% to \$6/kg), pepper (26% to \$22/kg) and tomatoes. These, coupled with slight increases in the prices of imported sugar and canned meat such as, pork luncheon meat and curry chicken had resulted in a 1.7% rise in the overall Food sub-index.

Changes in other sub-indexes are as follows:-

- Housing & Utilities was up 0.7% on account of increases in the prices of rough sawn timber, which rose 17.8% to \$18.15/lineal meter, kerosene, 5.0% to \$12.36/litre, and LP gas which rose by 0.5%.
- Transport and communications rose 1.1% largely driven by increases in the prices of petrol, which went up by 3.1% to \$11.37/litre and diesel 4.4% to \$11.55/litre.
- Drinks & Tobacco was slightly up 0.4% on account of a 1.2% increase in the price of betel nut (from 81 to 82cents/nut).

Apart from the above, price changes elsewhere in the consumption basket were negligible.



The annual inflation rate to March on a 3 months moving average basis was 2.9%, up 0.7 of a percentage point from 2.2% in February. The inflation rates for imported and other items were 4.8% and 1.6%. respectively.

Table 1. **THE HONIARA CONSUMER PRICE INDEX BY GROUP** (4th Qtr 2005=100)

Year/ Month	Food	Drinks & Tobacco	Clothing & Footwear	Housing & Utilities	Household Operations	Transport & Commu-nications	Recreation health & Oth. Serv.	Misce-llaneous	All Items	(%) Change
	<i>Wght</i>	<i>429</i>	<i>47</i>	<i>38</i>	<i>181</i>	<i>47</i>	<i>164</i>	<i>76</i>	<i>18</i>	<i>1000</i>
2010 January	158.8	143.9	139.7	147.3	154.3	135.6	119.2	159.2	148.3	0.9
February	158.4	151.7	139.7	146.3	153.2	136.4	119.2	159.9	148.4	0.1
March	162.2	145.9	139.7	147.0	152.8	137.3	119.2	159.9	150.0	1.1
April	157.1	160.6	139.7	146.7	152.7	137.4	119.2	160.7	148.5	-1.0
May	155.9	145.9	140.0	147.0	153.2	138.8	119.2	167.4	147.7	-0.5
June	154.5	144.7	141.4	147.3	158.4	139.8	119.2	171.1	147.6	0.0
July	154.6	147.3	141.1	148.6	158.4	138.9	119.2	171.0	147.9	0.2
August	152.1	147.5	141.1	149.1	163.3	140.4	119.2	171.0	147.4	-0.4
September	151.7	141.5	141.1	149.1	163.3	135.0	119.2	171.8	146.1	-0.9
October	153.2	143.9	141.5	149.3	164.4	136.4	120.0	170.1	147.2	0.7
November	153.6	146.3	141.7	149.6	164.3	136.4	120.0	173.4	147.5	0.3
December	152.1	151.4	141.7	150.5	164.3	140.8	120.0	173.4	148.0	0.3
2011 January	155.8	157.1	141.7	161.1	165.4	142.4	122.7	174.0	152.3	2.9
February	156.8	157.5	141.7	161.1	165.6	142.4	122.5	178.6	152.9	0.3
March	159.5	158.2	141.8	162.2	165.6	144.0	122.5	179.4	154.5	1.1
Percentage Change in the CPI by Group										
<i>(a) on the same month a year ago</i>										
2010 January	1.8	8.8	7.5	-6.9	3.9	10.6	9.3	4.1	2.4	
February	0.9	12.6	7.1	-7.5	3.5	7.4	6.1	4.4	1.4	
March	0.1	5.2	15.3	-6.9	3.3	6.2	6.1	4.3	0.9	
April	-3.1	28.9	15.4	-3.3	3.0	5.5	6.1	4.5	0.9	
May	-3.9	18.6	15.0	1.5	2.9	6.1	6.1	8.6	1.2	
June	-4.2	10.9	7.7	1.8	4.9	6.8	6.1	9.8	0.8	
July	-3.5	14.0	7.5	2.7	4.9	3.6	6.1	9.7	1.0	
August	-4.7	14.0	7.2	3.3	7.0	6.3	5.9	9.7	1.0	
September	-4.3	7.9	7.2	2.9	6.6	0.2	5.9	10.2	0.0	
October	-2.9	7.7	7.4	1.3	6.5	1.0	6.6	8.3	0.5	
November	-3.2	6.0	7.5	1.4	6.5	1.8	6.5	10.4	0.4	
December	-3.8	9.3	7.5	2.1	6.5	4.1	6.5	10.4	0.8	
2011 January	-1.9	9.2	1.5	9.3	7.1	5.1	3.0	9.3	2.8	
February	-1.0	3.8	1.5	10.1	8.1	4.4	2.8	11.7	3.0	
March	-1.7	8.5	1.6	10.3	8.4	4.9	2.8	12.2	3.0	
<i>(b) 3 months moving average on same period a year ago</i>										
2010 January	1.7	8.8	9.0	-7.1	4.1	8.3	0.3	3.3	1.5	
February	1.7	9.0	8.1	-7.0	3.8	9.5	3.7	3.7	1.8	
March	0.9	8.8	9.8	-7.1	3.5	8.0	7.2	4.3	1.6	
April	-0.7	15.1	12.5	-5.9	3.2	6.4	6.1	4.4	1.1	
May	-2.3	17.1	15.3	-3.0	3.0	5.9	6.1	5.8	1.0	
June	-3.7	19.3	12.6	-0.1	3.6	6.1	6.1	7.6	1.0	
July	-3.9	14.4	10.0	2.0	4.2	5.5	6.1	9.4	1.0	
August	-4.1	13.0	7.5	2.6	5.6	5.6	6.1	9.7	1.0	
September	-4.1	11.9	7.3	2.9	6.2	3.3	6.0	9.9	0.7	
October	-4.0	9.8	7.2	2.5	6.7	2.5	6.1	9.4	0.5	
November	-3.5	7.2	7.4	1.9	6.5	1.0	6.3	9.7	0.3	
December	-3.3	7.6	7.5	1.6	6.5	2.3	6.5	9.7	0.6	
2011 January	-3.0	8.2	5.4	4.3	6.7	3.7	5.3	10.0	1.3	
February	-2.2	7.3	3.4	7.1	7.2	4.5	4.0	10.5	2.2	
March	-1.5	7.1	1.5	9.9	7.9	4.8	2.8	11.1	2.9	

Table 2. **PRICE INDEX OF IMPORTED ITEMS BY GROUP** (4th Qtr 2005=100)

Year/ Month	Wght	Food	Drinks & Tobacco	Clothing & Footwear	Housing & Utilities	Household Operations	Transport & Commu-nications	Recreation health & Oth. Serv.	Misce-llaneous	All Items	(%) Change
		186	4	31	52	34	50	23	18	398	
2010	January	177.5	138.2	120.5	144.2	146.6	145.6	138.5	159.2	158.6	0.4
	February	170.0	138.2	120.5	144.2	146.0	144.4	138.5	159.9	154.9	-2.3
	March	170.2	138.2	120.5	146.5	145.4	147.4	138.5	159.9	155.6	0.5
	April	162.5	138.2	120.5	145.3	145.0	147.8	138.5	160.7	152.0	-2.4
	May	162.3	138.2	120.9	146.3	145.7	152.5	138.5	167.4	153.0	0.7
	June	162.7	138.2	122.7	156.0	150.0	156.1	138.7	171.1	155.5	1.7
	July	165.0	138.2	122.3	154.5	150.4	153.3	138.7	171.0	156.1	0.3
	August	164.7	138.2	122.2	156.4	150.9	157.9	138.7	171.0	156.8	0.5
	September	165.0	139.5	122.2	156.4	151.0	157.9	138.7	171.8	157.0	0.2
	October	165.7	139.5	122.7	157.2	150.6	158.0	141.4	170.1	157.5	0.3
	November	166.6	139.5	123.0	158.0	150.5	158.0	141.4	173.4	158.2	0.4
	December	163.1	139.5	123.0	161.4	150.5	172.6	141.4	173.4	158.9	0.4
2011	January	166.2	139.5	120.8	174.9	152.3	177.6	141.4	174.0	162.7	2.4
	February	168.6	139.5	120.8	174.9	152.6	177.6	140.6	178.6	164.0	0.8
	March	169.5	139.5	121.0	174.6	152.6	181.0	140.6	179.4	164.8	0.5
Percentage Change in Imported Items Index by Group											
<i>(a) on the same month a year ago</i>											
2010	January	0.6	18.0	1.9	-3.4	3.1	13.8	1.1	4.1	2.1	
	February	-3.5	18.0	1.5	-3.1	3.7	17.6	1.1	4.4	0.3	
	March	-3.3	18.0	1.0	-0.7	3.3	13.1	1.1	4.3	0.3	
	April	-7.2	5.5	1.2	3.7	3.0	10.9	1.0	4.5	-1.6	
	May	-7.0	5.5	0.8	4.7	3.3	13.0	1.0	8.6	-0.9	
	June	-6.7	0.0	2.3	11.6	4.1	15.7	1.2	9.8	0.5	
	July	-4.9	0.0	2.0	10.6	4.4	5.4	1.2	9.7	0.3	
	August	-5.3	0.0	1.6	11.9	3.8	10.2	0.7	9.7	0.7	
	September	-5.1	0.9	1.6	10.3	3.3	10.2	0.5	10.2	0.6	
	October	-5.9	0.9	1.9	9.5	2.8	10.1	2.5	8.3	0.0	
	November	-5.7	0.9	2.0	9.6	2.7	12.7	2.1	10.4	0.5	
	December	-7.5	0.9	2.0	12.0	2.7	19.2	2.1	10.4	0.6	
2011	January	-6.3	0.9	0.3	21.3	3.9	22.0	2.1	9.3	2.6	
	February	-0.8	0.9	0.3	21.3	4.5	23.0	1.5	11.7	5.9	
	March	-0.4	0.9	0.4	19.2	4.9	22.8	1.5	12.2	5.9	
<i>(b) 3 months moving average on same period a year ago</i>											
2010	January	1.0	18.0	2.2	-4.6	3.0	6.4	0.7	3.3	1.3	
	February	-0.5	18.0	1.9	-3.3	3.2	14.8	0.9	3.7	1.5	
	March	-2.0	18.0	1.5	-2.4	3.4	14.8	1.1	4.3	0.9	
	April	-4.6	13.5	1.2	-0.1	3.3	13.8	1.1	4.4	-0.3	
	May	-5.8	9.3	1.0	2.5	3.2	12.4	1.0	5.8	-0.7	
	June	-7.0	3.6	1.4	6.7	3.5	13.2	1.1	7.6	-0.7	
	July	-6.2	1.8	1.7	9.0	3.9	11.2	1.1	9.4	0.0	
	August	-5.6	0.0	2.0	11.4	4.1	10.3	1.0	9.7	0.5	
	September	-5.1	0.3	1.7	10.9	3.9	8.6	0.8	9.9	0.5	
	October	-5.4	0.6	1.7	10.6	3.3	10.2	1.2	9.4	0.4	
	November	-5.6	0.9	1.8	9.8	2.9	11.0	1.7	9.7	0.4	
	December	-6.4	0.9	2.0	10.4	2.7	14.0	2.2	9.7	0.4	
2011	January	-6.5	0.9	1.5	14.3	3.1	18.0	2.1	10.0	1.3	
	February	-5.0	0.9	0.9	18.2	3.7	21.4	1.9	10.5	3.0	
	March	-2.6	0.9	0.3	20.6	4.4	22.6	1.7	11.1	4.8	

Table 3. **PRICE INDEX OF OTHER ITEMS BY GROUP** (4th Qtr 2005=100)

Year/ Month	Food	Drinks & Tobacco	Clothing & Footwear	Housing & Utilities	Household Operations	Transport & Commu- -nications	Recreation health & Oth. Serv.	Misce- llaneous	All Items	(%) Change	
	Wght	243	43	7	129	13	114	53	602		
2010	January	144.4	144.4	224.5	148.6	174.6	131.1	110.8	--	141.4	1.3
	February	149.5	153.0	224.5	147.2	172.0	132.8	110.8	--	144.0	1.8
	March	156.1	146.6	224.5	147.2	172.0	132.8	110.8	--	146.3	1.5
	April	153.0	162.6	224.5	147.2	172.9	132.8	110.8	--	146.2	-0.1
	May	150.9	146.6	224.5	147.2	172.9	132.8	110.8	--	144.2	-1.4
	June	148.2	145.3	224.5	143.8	180.6	132.7	110.8	--	142.4	-1.2
	July	146.7	148.1	224.5	146.2	179.6	132.7	110.8	--	142.5	0.1
	August	142.5	148.4	224.5	146.2	195.7	132.7	110.8	--	141.1	-0.9
	September	141.5	141.7	224.5	146.2	195.7	125.0	110.8	--	138.8	-1.6
	October	143.6	144.3	224.5	146.2	200.4	126.8	110.8	--	140.3	1.1
	November	143.6	146.9	224.5	146.2	200.4	126.8	110.8	--	140.5	0.1
	December	143.6	152.5	224.5	146.2	200.4	126.8	110.8	--	140.9	0.3
2011	January	147.8	158.8	234.1	155.5	199.5	127.0	114.6	--	145.5	3.3
	February	147.7	159.2	234.1	155.5	199.5	127.0	114.6	--	145.5	0.0
	March	151.9	160.0	234.1	157.2	199.5	127.8	114.6	--	147.7	1.6
Percentage Change in Other Items Index by Group											
<i>(a) on the same month a year ago</i>											
2010	January	3.0	8.0	23.6	-8.2	5.5	9.1	14.4	--	2.6	
	February	5.0	12.1	23.6	-9.1	3.2	3.2	9.1	--	2.2	
	March	3.1	4.2	23.6	-9.1	3.2	3.2	9.1	--	0.9	
	April	0.5	31.1	23.6	-5.8	2.9	3.0	9.1	--	2.3	
	May	-1.3	20.0	23.6	0.3	2.0	2.9	9.1	--	2.2	
	June	-1.9	12.0	23.6	-2.0	6.6	2.7	9.1	--	1.1	
	July	-2.2	15.4	23.6	-0.4	5.9	2.7	9.1	--	1.5	
	August	-4.1	15.4	23.6	-0.1	13.9	4.4	9.1	--	1.3	
	September	-3.6	8.6	23.6	-0.1	13.9	-4.7	9.1	--	-0.5	
	October	-0.1	8.3	23.6	-1.8	14.8	-3.3	9.1	--	0.9	
	November	-0.9	6.4	23.6	-1.8	14.8	-3.3	9.1	--	0.4	
	December	-0.4	10.0	23.6	-1.8	14.8	-3.3	9.1	--	0.9	
2011	January	2.3	9.9	4.3	4.7	14.3	-3.2	3.5	--	2.9	
	February	-1.2	4.1	4.3	5.6	16.0	-4.4	3.5	--	1.0	
	March	-2.7	9.1	4.3	6.8	16.0	-3.8	3.5	--	1.0	
<i>(b) 3 months moving average on same period a year ago</i>											
2010	January	2.4	8.0	33.4	-8.0	6.7	9.1	0.1	--	1.6	
	February	3.8	8.3	28.0	-8.4	5.3	7.1	5.3	--	2.1	
	March	3.7	8.1	23.6	-8.8	4.0	5.1	10.8	--	1.9	
	April	2.8	15.2	23.6	-8.0	3.1	3.1	9.1	--	1.8	
	May	0.8	17.8	23.6	-5.0	2.7	3.0	9.1	--	1.8	
	June	-0.9	20.9	23.6	-2.6	3.8	2.9	9.1	--	1.9	
	July	-1.8	15.7	23.6	-0.7	4.8	2.8	9.1	--	1.6	
	August	-2.7	14.3	23.6	-0.8	8.8	3.3	9.1	--	1.3	
	September	-3.3	13.1	23.6	-0.2	11.3	0.8	9.1	--	0.8	
	October	-2.6	10.7	23.6	-0.7	14.2	-1.2	9.1	--	0.6	
	November	-1.5	7.8	23.6	-1.2	14.5	-3.7	9.1	--	0.3	
	December	-0.5	8.3	23.6	-1.8	14.8	-3.3	9.1	--	0.7	
2011	January	0.3	8.8	16.2	0.3	14.6	-3.2	7.1	--	1.4	
	February	0.2	7.9	9.8	2.8	15.0	-3.6	5.2	--	1.6	
	March	-0.6	7.7	4.3	5.7	15.4	-3.8	3.5	--	1.6	

Table 4. THE HONIARA CONSUMER PRICE INDEX BY GROUP (Spliced Series)											
Year/Month	Food	Drinks & Tobacco	Clothing & Footwear	Housing & Utilities	Household Operations	Transport & Commu- -nications	Recreation health & Oth. Serv.	Misce- llaneous	All Items	(%) Change	
(4th Quarter 1992 = 100)											
2009	March	513.0	447.4	169.7	587.9	404.9	518.8	393.7	331.8	470.5	1.6
	April	513.4	401.9	169.4	565.1	406.0	523.1	393.9	332.6	465.7	-1.0
	May	513.7	396.7	170.4	539.2	407.5	525.5	393.9	333.7	462.2	-0.7
	June	510.3	420.9	183.9	539.2	413.4	525.5	393.9	337.2	463.5	0.3
	July	507.1	416.7	183.9	539.2	413.4	538.4	393.9	337.2	463.5	0.0
	August	505.1	417.4	184.4	537.9	417.6	530.2	394.7	337.2	461.9	-0.3
	September	501.8	423.1	184.4	540.0	419.2	541.4	394.9	337.3	462.5	0.1
	October	499.6	431.0	184.5	549.1	422.3	541.8	394.9	339.8	463.6	0.2
	November	502.3	445.2	184.6	549.6	422.3	537.7	395.4	339.8	465.0	0.3
	December	500.7	447.0	184.6	549.6	422.3	543.3	395.4	339.8	465.1	0.0
2010	January	502.6	464.2	195.6	548.8	422.3	544.3	417.9	344.4	469.4	0.9
	February	501.4	489.3	195.6	545.2	419.2	547.5	417.9	346.0	469.7	0.1
	March	513.5	470.5	195.6	547.7	418.1	551.2	417.9	346.0	474.8	1.1
	April	497.5	517.9	195.6	546.5	418.0	551.7	417.9	347.7	470.1	-1.0
	May	493.4	470.6	196.1	547.5	419.3	557.4	417.9	362.3	467.6	-0.5
	June	489.1	466.8	198.1	548.7	433.6	561.4	418.1	370.2	467.4	0.0
	July	489.6	475.0	197.6	553.5	433.6	557.9	418.1	370.0	468.2	0.2
	August	481.5	475.9	197.6	555.5	446.7	563.8	418.1	370.0	466.6	-0.4
	September	480.4	456.5	197.6	555.5	446.9	542.3	418.1	371.8	462.5	-0.9
	October	485.0	464.0	198.1	556.4	449.8	547.5	421.0	368.1	465.9	0.7
	November	486.1	471.7	198.4	557.2	449.6	547.5	421.0	375.2	467.1	0.3
	December	481.4	488.4	198.4	560.9	449.6	565.3	421.0	375.2	468.7	0.3
2011	January	493.2	506.9	198.5	600.1	452.5	571.8	430.4	376.4	482.3	2.9
	February	496.3	508.1	198.5	600.1	453.1	571.8	429.5	386.6	483.9	0.3
	March	505.0	510.3	198.6	604.3	453.1	578.2	429.5	388.2	489.3	1.1
Percentage Change in the CPI by Group											
<i>12 months moving average on same period a year ago</i>											
2009	February	26.4	8.2	2.0	17.0	15.9	14.3	1.5	18.1	18.4	
	March	28.0	8.7	2.2	17.4	15.8	14.4	0.9	17.3	19.1	
	April	28.7	7.9	2.3	16.8	15.6	14.3	0.2	16.7	19.2	
	May	27.5	7.4	2.5	15.8	15.2	14.0	-0.4	15.5	18.4	
	June	25.5	7.2	3.2	13.6	14.4	12.9	-1.0	14.3	17.1	
	July	23.4	6.3	3.9	11.6	13.6	10.7	-1.6	12.5	15.3	
	August	20.5	6.1	4.5	9.6	12.7	8.3	-2.2	11.0	13.3	
	September	18.1	5.9	5.3	7.7	12.7	6.4	-2.8	10.1	11.6	
	October	16.0	5.8	6.1	5.4	12.8	5.2	-3.3	9.3	10.0	
	November	13.9	6.0	6.9	2.9	11.9	4.3	-3.8	8.6	8.4	
	December	11.9	6.3	7.6	0.7	10.9	4.6	-4.3	7.8	7.1	
2010	January	10.0	6.6	7.4	-1.0	10.0	5.0	-3.1	7.1	6.0	
	February	8.0	7.2	7.2	-2.7	9.0	4.9	-2.2	6.6	4.9	
	March	5.7	6.5	8.3	-4.3	8.1	4.5	-1.4	6.0	3.5	
	April	3.6	8.9	9.4	-5.1	7.2	4.3	-0.5	5.4	2.5	
	May	2.1	10.4	10.6	-5.1	6.4	4.1	0.3	5.4	1.9	
	June	1.0	10.9	10.5	-4.6	5.9	4.4	1.2	5.4	1.5	
	July	0.1	11.7	10.3	-4.1	5.5	4.8	2.1	5.7	1.3	
	August	-0.6	12.2	10.1	-3.5	5.2	5.7	2.9	5.9	1.3	
	September	-1.2	12.1	9.9	-2.9	4.9	5.7	3.8	6.4	1.1	
	October	-1.7	12.0	9.6	-2.3	4.6	5.6	4.7	6.6	1.0	
	November	-2.1	11.5	9.4	-1.5	4.8	5.4	5.6	7.3	1.0	
	December	-2.6	11.8	9.2	-0.8	5.0	4.9	6.5	7.9	0.9	
2011	January	-2.9	11.8	8.7	0.6	5.2	4.5	5.9	8.3	1.0	
	February	-3.0	11.0	8.2	2.1	5.6	4.2	5.6	8.9	1.1	
	March	-3.2	11.3	7.1	3.6	6.0	4.1	5.3	9.6	1.3	

Table 5. COMPARATIVE PRICES OF SELECTED COMMODITIES

DESCRIPTION	2002	2003	2004	2005	2006	2007	2008	2009	2010				2011		
	Year	Year	Year	Year	Year	Year	Year	Year	Qtr 1	Qtr 2	Qtr 3	Qtr 4	Jan	Feb	Mar
FOOD															
RICE (Solrais: 20kg Bag)	67.69	81.08	83.85	91.70	99.78	107.94	169.84	205.85	193.56	167.33	172.78	171.33	167.67	172.67	172.67
NOODLE (Maggi: 85g pkt)	1.50	1.76	1.84	2.02	2.15	2.27	2.50	2.82	2.82	2.93	2.96	2.96	3.00	3.00	3.00
FLOUR (plain white flour: 25kg bag)	60.23	93.36	114.86	110.05	114.13	127.53	182.10	188.90	176.50	176.17	174.06	181.83	196.50	186.67	191.67
CHICKEN WING (imported, 500g pkt)	15.44	20.42	20.63	18.67	20.88	24.33	33.13	31.25	30.00	30.00	30.00	30.00	30.00	30.00	30.00
TUNA (second grade Taiyo: 180g can)	3.73	3.93	4.70	4.94	5.04	5.24	6.27	6.58	6.51	6.56	6.21	6.10	5.90	5.90	5.90
KUMARA HEAPS (\$/kg)	3.65	2.05	1.72	2.28	2.28	3.20	3.68	3.94	3.83	3.39	3.26	3.30	4.20	3.91	3.42
SUPPERY CABBAGE \$/kg	5.82	3.88	4.24	4.94	5.01	6.18	9.26	8.37	7.13	9.20	7.40	5.21	5.30	5.16	6.26
WHITE SUGAR (Chelsea, 500gm pkt)	2.77	3.22	3.36	3.47	3.64	4.28	4.85	5.06	6.57	6.87	6.98	6.90	7.13	7.25	7.38
SALT (Sky salt, 1kg.)	3.17	3.95	3.71	4.22	4.50	4.61	4.46	4.54	4.47	4.47	4.49	4.72	4.73	4.80	4.80
DRINKS & TOBACCO															
SOLBREW BEER (Solbrew, 355ml bottle)	4.87	6.07	6.07	6.16	6.83	7.80	8.75	9.08	9.10	9.10	9.07	9.00	9.00	9.00	9.00
TWIST TOBACCO (per stick)	5.50	7.02	7.02	7.31	7.40	7.49	7.78	10.03	14.73	15.41	15.50	15.50	15.50	15.50	15.50
UTILITIES															
WATER CHARGES (300gal)	26.13	29.20	29.20	29.20	29.20	53.70	62.10	58.42	56.00	56.00	56.00	56.00	65.66	65.66	65.66
ELECTRICITY (40 units)	44.89	74.50	74.50	81.90	101.02	116.42	177.00	192.19	182.61	176.96	177.34	177.34	190.31	190.31	190.31
TRANSPORT & COMMUNICATION															
PETROL (cents per litre)	247.36	350.20	350.20	499.08	535.69	628.24	958.45	799.42	887.00	941.23	907.07	949.03	1103.00	1103.00	1137.00
TELEPHONE CHARGES (per call, within Honi)	0.46	0.61	0.61	0.67	0.67	0.68	0.70	0.70	0.70	0.70	0.65	0.55	0.55	0.55	0.55
MISCELLANEOUS GOODS & SERVICES															
BATH SOAP (Giv: 85g cake)	1.54	1.73	1.73	1.80	1.83	2.00	2.31	2.43	2.52	2.66	2.79	2.74	2.76	2.76	2.76
TOOTHPASTE (Colgate: 110g)	6.63	7.91	7.91	8.88	8.95	10.29	13.46	15.51	15.68	17.35	17.18	17.25	17.28	19.92	19.92