



**Solomon Islands Government**

**Statistical Bulletin: No: 13/2016**

**VISITOR STATISTICS**

(Second Quarter 2016)

**Solomon Islands National Statistics Office**

**Ministry of Finance**

**Honiara**

## TABLE OF CONTENTS

|   |   |
|---|---|
| Introduction .....                            | 3 |
| COMMENTARY OF RESULTS .....                   | 5 |
| <i>International Arrivals</i> .....           | 5 |
| <i>Arrivals by Country of Residence</i> ..... | 5 |
| <i>Visitor by Month</i> .....                 | 5 |
| <i>Tourists</i> .....                         | 5 |
| <i>Visitors by Purpose of Visit</i> .....     | 5 |
| <i>Visitor by Age Group</i> .....             | 5 |
| <i>Visitor by Occupation:</i> .....           | 5 |
| <i>Visitor by Carrier</i> .....               | 5 |

### ***Charts***

---

|  |    |
|--|----|
| Chart 1: Arrivals by Category, 2 <sup>nd</sup> Quarter 2016 .....  | 6  |
| Chart 2: Visitor Arrivals by Country of Residence by quarter: 2 <sup>nd</sup> Quarter 2016.....          | 7  |
| Chart 3: Visitor Arrivals by Month, 2013 to 2 <sup>nd</sup> Quarter 2016.....                            | 8  |
| Chart 4: Tourist Arrivals by Country of Residence, 2 <sup>nd</sup> Quarter 2016.....                     | 9  |
| Chart 5: Visitor Arrivals by Country of Residence by Purpose of Visit, 2 <sup>nd</sup> Quarter 2016..... | 10 |
| Chart 6: Visitor Arrivals by Age group category by sex, 2 <sup>nd</sup> Quarter 2016.....                | 11 |
| Chart 7: Visitor Arrivals by Occupation by sex, 2 <sup>nd</sup> Quarter 2016.....                        | 12 |
| Chart 8: Visitor Arrivals by Carrier by sex, 2 <sup>nd</sup> Quarter 2016.....                           | 13 |

### ***Tables***

|   |    |
|---|----|
| Table 1: Total Arrivals Classified by Purpose of Travel by Sex by Year by Quarter: 2 <sup>nd</sup> Quarter 2016 ..... | 6  |
| Table 2: Visitors Arrivals by Country of Residence by Year by Quarter: 2 <sup>nd</sup> Quarter 2016.....              | 7  |
| Table 3: Visitors Arrivals by Month: 2007 to 2 <sup>nd</sup> Quarter 2016.....  | 8  |
| Table 4: Visitors Classified as Tourists by Country of Residence by Year, Quarter and Average Length .....            | 9  |
| of Stay: 2 <sup>nd</sup> quarter 2014 to 2 <sup>nd</sup> Quarter 2016 .....   | 9  |
| Table 5: Visitor Arrivals by Country of Residence by Purpose of Visit by sex: 2 <sup>nd</sup> Quarter 2016 .....      | 10 |
| Table 6: Visitors Arrivals by Country of Residence by Age Groups by sex: 2 <sup>nd</sup> Quarter 2016.....            | 11 |
| Table 7: Visitors Arrivals by Country of Residence by Occupation and Sex: 2 <sup>nd</sup> Quarter 2016.....           | 12 |
| Table 8: Visitors Arrivals by Country of Residence by Carrier By Sex: 2 <sup>nd</sup> Quarter 2016.....               | 13 |

|                                       |    |
|---------------------------------------|----|
| Appendix 1 .....                      | 14 |
| <i>Concepts and Definitions</i> ..... | 14 |
| Appendix 2.....                       | 15 |

|  |    |
|--|----|
| Table 9: Intending Resident Arrivals by Country of residence by Occupation and sex: 2 <sup>nd</sup> Quarter 2016.....  | 15 |
| Table 10: Intending Resident Arrivals by country of Residence by Age Groups by Sex: 2 <sup>nd</sup> Quarter 2016.....  | 16 |
| Table 11: Returning Resident Arrivals by country of Residence by Age Groups and sex: 2 <sup>nd</sup> Quarter 2016....  | 17 |
| Table 12: Returning Resident Arrivals by country of Residence by Occupation and sex: 2 <sup>nd</sup> Quarter 2016..... | 18 |

## Introduction

This quarterly bulletin is produced by the National Statistics Office NSO in the Ministry of Finance and Treasury. It provides information on international arrivals comprised of the returning resident, intending resident, and visitor. The explanation of these categories is provided in Appendix 1 of the bulletin.

Visitor category comprised the bigger share of the bulletin, (portrayed in tables 1 to 8); compared to the returning and intending resident category portrayed in Tables 1, and 9 to 12. The bulletin includes twelve tables and eight charts stretched over cross-field tabulation, preferably to meet information need of local, regional, and international researchers.

The information captured through a self fill Disembarkation form that was completed by all disembarking passengers. The forms were collected by Immigration officials at international check-in counters on arrival. The coverage of the bulletin is complete.

Sheer acknowledgement is owed to the Immigration Department for their continuous support of this bulletin, by providing an office space and permitting the statistics office to input completed forms. With the official arrangement in-placed between the Statistics and Immigration departments this bulletin is possible.

The inclusion of four new tables 9 to 12 in Appendix 2 of the bulletin anticipates to complete the distribution portrait of Intending and Returning resident. The distribution is by age groups, occupation and by country of usual residence.

Data limitations, highlighted in the previous bulletin still remain, though some have substantially improved but noted again for ease of reference as follows:-

- Data entry duplication by the Immigration and Statistics departments was a long standing issue. Discussion of the issues had been made by the two departments, though resolution has been recognized, this was yet to be put in place.
- Data reported in this bulletin only covers incoming passengers, departing passengers is not covered in the bulletin, but plans to capture departure data is underway
- Timeliness of visitor statistics has improved but the bulletin may be delayed by the production process.
- The information contained in the bulletin is based on information captured from the data source by the SINSO.
- The monetary value of the industry is not available and thus not possible in this bulletin. The concepts and definitions of the arrival categories were included in Appendix 1. The symbols that are likely to be used are:

|     |   |
|-----|---|
| -   | zero if representing a value                        |
| -   | negative change if representing a percentage change |
| +   | positive change if representing a percentage change |
| p   | preliminary figure, subject to revision             |
| r   | revised   |
| e   | estimate  |
| n/a | not available                                       |

For more information contact the Statistics Office, Department of Finance and Treasury:

TELEPHONE : (677) 22154/21427

FACSMILE : (677) 23775

E-MAIL : STATS-management@mof.gov.sb

: STATS-SocialDemography@mof.gov.sb

WEBSITE : <http://www.statistics.gov.sb>

Contact persons:      1. Mrs. Irene **KALAUMA**, Chief Statistician  
                                 2. Mrs. Anterlyn **TUZAKANA**, Senior Statistician

## COMMENTARY OF RESULTS

### International Arrivals

Total Arrivals for the second quarter of 2016 was 11,546. This is an increase of 18.4% compared to the previous quarter (1<sup>st</sup> Quarter 2016). Compared to the same quarter a year ago, an increase of 5.8% was recorded.

Arrivals classified by the category for the second quarter of 2016 showed that returning resident comprise of 48%.

Visitors recorded 49% and the remaining 3% was recorded for intending resident.

Visitors' arrival for the second quarter showed an increase of 12.7% to 5,679 compared to the first quarter figure of 5,037.

Compared to the same quarter in 2015, an increase of 2.1% was recorded. Table 1, showed visitor and returning resident categories comprised the larger proportion of all arrivals while the intending resident represents the lesser share during the quarter. Chart 1 gives a clear picture of all the categories.

### Visitor by Country of Residence

Arrivals by country of residence for second quarter of the year showed that Australians (43.1%) continues and remain the frequent travellers to Solomon Islands, followed by Other Asia (14.8%), US (7.8%), NZ (7.7%), Fiji (6.4%), PNG (4.3%) and China (3.4%). Table 2 showed further detailed information.

### Visitor by Month

Visitors by monthly arrivals for the quarter showed that June has the highest number of arrivals with 1,984 persons. This was followed by the month of May with a recorded total of 1,896 persons and April the least with 1,799 persons.

### Tourists

Tourist<sup>1</sup> arrivals for second quarter of the year recorded a total of 1,887 persons and they spent an average of 13 days in the country. The highest number of tourists recorded for the quarter comes from Australia (48.3%) and staying in the country for an average of 12 days. This was followed by US (15%), Other Asia (11.8%), China (4.1%), NZ (3.5%), and Other Europe (3.1%).

### Visitor by Purpose of Visit

Distribution of visitors by purpose of visit revealed that Holiday & Vocation (32.2%) as most popular during the quarter. This was followed by Business & Conference (28.4%), Other (24.2%), Visit friends & relatives (14.2%) and Transit & stopover the least with (1%).

### Visitor by Age Group

Visitor Arrivals by broad age groups showed that 75.3% of arrivals were in the 25years to 64years age range. The younger and the older age brackets represent 18.6% while the remaining 6.2% represents visitors who did not state their age. Male represents 69% of the arrival and female 31%. (Refer to Chart 6).

### Visitor by Occupation

Visitor by occupational category revealed that those who stated Other (38.4%) recorded the highest during the quarter. This was followed by Professional & Technical (28.7%), No Work (11.7%), Administration and managerial (10.3%), Service Worker (3.7%) and Production & Related Work (3.4%). Table 7 further revealed that Australia dominated most of the categories of occupations during the quarter. Refer to Table 7 for further analysis.

### Visitor by Carrier

The most popular carriers during the quarter were Solomon Airlines (47.5%) followed by Virgin Australia (23.4%), Air Niu Gini (16.1%) and Fiji Airways (10.2%).

---

<sup>1</sup> Refer to Appendix 1 for the definition

Table 1: Total Arrivals Classified by Purpose of Travel by Sex, by Year by Quarter: 2<sup>nd</sup> Quarter 2016

| Year /<br>Quarter                    | Returning Resident |       |       |                      |        |        |       | Intending Resident |       |       | Visitor |       |       | Total |       |        |     |
|--------------------------------------|--------------------|-------|-------|----------------------|--------|--------|-------|--------------------|-------|-------|---------|-------|-------|-------|-------|--------|-----|
|                                      | Solomon Islander   |       |       | Non-Solomon Islander |        |        |       | All                | M     | F     | T       | M     | F     | T     | M     | F      | All |
|                                      | M                  | F     | T     | M                    | F      | T      |       |                    |       |       |         |       |       |       |       |        |     |
| 2012 4 <sup>th</sup>                 | 3,192              | 1,784 | 4,976 | 5                    | 1      | 6      | 4,982 | 631                | 215   | 846   | 3,572   | 1,466 | 5,038 | 7,400 | 3,466 | 10,866 |     |
| 2013 1 <sup>st</sup>                 | 1,966              | 1,111 | 3,077 | 6                    | -      | 6      | 3,083 | 961                | 338   | 1,299 | 4,034   | 1,284 | 5,318 | 6,967 | 2,733 | 9,700  |     |
| 2 <sup>nd</sup>                      | 2,422              | 1,344 | 3,766 | 1                    | 2      | 3      | 3,769 | 764                | 279   | 1,043 | 4,531   | 1,664 | 6,195 | 7,718 | 3,289 | 11,007 |     |
| 3 <sup>rd</sup>                      | 2,442              | 1,415 | 3,857 | 5                    | 3      | 8      | 3,865 | 715                | 228   | 943   | 5,007   | 1,880 | 6,887 | 8,169 | 3,526 | 11,695 |     |
| 4 <sup>th</sup>                      | 3,577              | 2,051 | 5,628 | 12                   | 12     | 24     | 5,652 | 620                | 224   | 844   | 4,294   | 1,737 | 6,031 | 8,503 | 4,024 | 12,527 |     |
| 2014 1 <sup>st</sup>                 | 2,100              | 1,287 | 3,387 | 3                    | 3      | 6      | 3,393 | 841                | 318   | 1,159 | 3,685   | 1,069 | 4,754 | 6,629 | 2,677 | 9,306  |     |
| 2 <sup>nd</sup>                      | 2,511              | 1,231 | 3,742 | 126                  | 56     | 182    | 3,924 | 604                | 204   | 808   | 3,506   | 1,419 | 4,925 | 6,747 | 2,910 | 9,657  |     |
| 3 <sup>rd</sup>                      | 2,399              | 1,295 | 3,694 | 5                    | 4      | 9      | 3,703 | 823                | 244   | 1,067 | 3,792   | 1,691 | 5,483 | 7,019 | 3,234 | 10,253 |     |
| 4 <sup>th</sup>                      | 3,290              | 1,937 | 5,227 | 20                   | 5      | 25     | 5,252 | 692                | 147   | 839   | 3,481   | 1,427 | 4,908 | 7,483 | 3,516 | 10,999 |     |
| 2015 1 <sup>st</sup>                 | 2,356              | 1,530 | 3,886 | 9                    | 6      | 15     | 3,901 | 843                | 280   | 1,123 | 3,251   | 1,148 | 4,399 | 6,459 | 2,964 | 9,423  |     |
| 2 <sup>nd</sup>                      | 2,770              | 1,535 | 4,305 | 14                   | 3      | 17     | 4,322 | 825                | 201   | 1,026 | 3,958   | 1,604 | 5,562 | 7,567 | 3,343 | 10,910 |     |
| 3 <sup>rd</sup>                      | 3,022              | 1,749 | 4,771 | 14                   | 6      | 20     | 4,791 | 348                | 127   | 475   | 3,864   | 1,850 | 5,714 | 7,248 | 3,732 | 10,980 |     |
| 4 <sup>th</sup>                      | 3,784              | 2,422 | 6,206 | 15                   | 9      | 24     | 6,230 | 256                | 73    | 329   | 3,983   | 1,965 | 5,948 | 8,038 | 4,469 | 12,507 |     |
| 2016 1 <sup>st</sup>                 | 2,651              | 1,654 | 4,305 | 5                    | 5      | 10     | 4,315 | 301                | 101   | 402   | 3,603   | 1,434 | 5,037 | 6,560 | 3,194 | 9,754  |     |
| 2 <sup>nd</sup>                      | 3,547              | 1,945 | 5,492 | 11                   | 7      | 18     | 5,510 | 291                | 66    | 357   | 3,917   | 1,762 | 5,679 | 7,766 | 3,780 | 11,546 |     |
| Percentage change                    |                    |       |       |                      |        |        |       |                    |       |       |         |       |       |       |       |        |     |
| 12 <sup>3rd</sup> -13 <sup>3rd</sup> | 12.6               | 16.2  | 13.9  | -77.3                | -75.0  | -76.5  | 13.0  | -14.9              | -10.6 | -13.9 | -2.3    | -13.9 | -5.7  | 0.2   | -3.9  | -1.1   |     |
| 13 <sup>2nd</sup> -13 <sup>3rd</sup> | 0.8                | 5.3   | 2.4   | 400.0                | 50.0   | 166.7  | 2.5   | -6.4               | -18.3 | -9.6  | 10.5    | 13.0  | 11.2  | 5.8   | 7.2   | 6.3    |     |
| 12 <sup>4th</sup> -13 <sup>4th</sup> | 12.1               | 15.0  | 13.1  | 140.0                | 1100.0 | 300.0  | 13.4  | -1.7               | 4.2   | -0.2  | 20.2    | 18.5  | 19.7  | 14.9  | 16.1  | 15.3   |     |
| 13 <sup>3rd</sup> -13 <sup>4th</sup> | 46.5               | 44.9  | 45.9  | 140.0                | 300.0  | 200.0  | 46.2  | -13.3              | -1.8  | -10.5 | -14.2   | -7.6  | -12.4 | 4.1   | 14.1  | 7.1    |     |
| 13 <sup>1st</sup> -14 <sup>1st</sup> | 6.8                | 15.8  | 10.1  | -50.0                | -      | 0.0    | 10.1  | -12.5              | -5.9  | -10.8 | -8.7    | -16.7 | -10.6 | -4.9  | -2.0  | -4.1   |     |
| 13 <sup>4th</sup> -14 <sup>1st</sup> | -41.3              | -37.3 | -39.8 | -75.0                | -75.0  | -75.0  | -40.0 | 35.6               | 42.0  | 37.3  | -14.2   | -38.5 | -21.2 | -22.0 | -33.5 | -25.7  |     |
| 13 <sup>2nd</sup> -14 <sup>2nd</sup> | 3.7                | -8.4  | -0.6  | 12500.0              | 2700.0 | 5966.7 | 4.1   | -20.9              | -26.9 | -22.5 | -22.6   | -14.7 | -20.5 | -12.6 | -11.5 | -12.3  |     |
| 13 <sup>3rd</sup> -14 <sup>3rd</sup> | -1.8               | -8.5  | -4.2  | 0.0                  | 33.3   | 12.5   | -4.2  | 15.1               | 7.0   | 13.1  | -24.3   | -10.1 | -20.4 | -14.1 | -8.3  | -12.3  |     |
| 14 <sup>2nd</sup> -14 <sup>3rd</sup> | -4.5               | 5.2   | -1.3  | -96.0                | -92.9  | -95.1  | -5.6  | 36.3               | 19.6  | 32.1  | 8.2     | 19.2  | 11.3  | 4.0   | 11.1  | 6.2    |     |
| 13 <sup>4th</sup> -14 <sup>4th</sup> | -8.0               | -5.6  | -7.1  | 66.7                 | -58.3  | 4.2    | -7.1  | 11.6               | -34.4 | -0.6  | -18.9   | -17.8 | -18.6 | -12.0 | -12.6 | -12.2  |     |
| 14 <sup>3rd</sup> -14 <sup>4th</sup> | 37.1               | 49.6  | 41.5  | 300.0                | 25.0   | 177.8  | 41.8  | -15.9              | -39.8 | -21.4 | -8.2    | -15.6 | -10.5 | 6.6   | 8.7   | 7.3    |     |
| 14 <sup>1st</sup> -15 <sup>1st</sup> | 12.2               | 18.9  | 14.7  | 200.0                | 100.0  | 150.0  | 15.0  | 0.2                | -11.9 | -3.1  | -11.8   | 7.4   | -7.5  | -2.6  | 10.7  | 1.3    |     |
| 14 <sup>4th</sup> -15 <sup>1st</sup> | -28.4              | -21.0 | -25.7 | -55.0                | 20.0   | -40.0  | -25.7 | 21.8               | 90.5  | 33.8  | -6.6    | -19.6 | -10.4 | -13.7 | -15.7 | -14.3  |     |
| 14 <sup>2nd</sup> -15 <sup>2nd</sup> | 10.3               | 24.7  | 15.0  | -88.9                | -94.6  | -90.7  | 10.1  | 36.6               | -1.5  | 27.0  | 12.9    | 13.0  | 12.9  | 12.2  | 14.9  | 13.0   |     |
| 15 <sup>1st</sup> -15 <sup>2nd</sup> | 17.6               | 0.3   | 10.8  | 55.6                 | -50.0  | 13.3   | 10.8  | -2.1               | -28.2 | -8.6  | 21.7    | 39.7  | 26.4  | 17.2  | 12.8  | 15.8   |     |
| 14 <sup>3rd</sup> -15 <sup>3rd</sup> | 26.0               | 35.1  | 29.2  | 180.0                | 50.0   | 122.2  | 29.4  | -57.7              | -48.0 | -55.5 | 1.9     | 9.4   | 4.2   | 3.3   | 15.4  | 7.1    |     |
| 15 <sup>2nd</sup> -15 <sup>3rd</sup> | 9.1                | 13.9  | 10.8  | 0.0                  | 100.0  | 17.6   | 10.9  | -57.8              | -36.8 | -53.7 | -2.4    | 15.3  | 2.7   | -4.2  | 11.6  | 0.6    |     |
| 14 <sup>4th</sup> -15 <sup>4th</sup> | 15.0               | 25.0  | 18.7  | -25.0                | 80.0   | -4.0   | 18.6  | -63.0              | -50.3 | -60.8 | 14.4    | 37.7  | 21.2  | 7.4   | 27.1  | 13.7   |     |
| 15 <sup>3rd</sup> -15 <sup>4th</sup> | 25.2               | 38.5  | 30.1  | 7.1                  | 50.0   | 20.0   | 30.0  | -26.4              | -42.5 | -30.7 | 3.1     | 6.2   | 4.1   | 10.9  | 19.7  | 13.9   |     |
| 15 <sup>1st</sup> -16 <sup>1st</sup> | 12.5               | 8.1   | 10.8  | -44.4                | -16.7  | -33.3  | 10.6  | -64.3              | -63.9 | -64.2 | 10.8    | 24.9  | 14.5  | 1.6   | 7.8   | 3.5    |     |
| 15 <sup>4th</sup> -16 <sup>1st</sup> | -29.9              | -31.7 | -30.6 | -66.7                | -44.4  | -58.3  | -30.7 | 17.6               | 38.4  | 22.2  | -9.5    | -27.0 | -15.3 | -18.4 | -28.5 | -22.0  |     |
| 15 <sup>2nd</sup> -16 <sup>2nd</sup> | 28.1               | 26.7  | 27.6  | -21.4                | 133.3  | 5.9    | 27.5  | -64.7              | -67.2 | -65.2 | -1.0    | 9.9   | 2.1   | 2.6   | 13.1  | 5.8    |     |
| 16 <sup>1st</sup> -16 <sup>2nd</sup> | 33.8               | 17.6  | 27.6  | 120.0                | 40.0   | 80.0   | 27.7  | -3.3               | -34.7 | -11.2 | 8.7     | 22.9  | 12.7  | 18.4  | 18.3  | 18.4   |     |

Chart 1: Arrivals by category 2<sup>nd</sup> quarter 2016

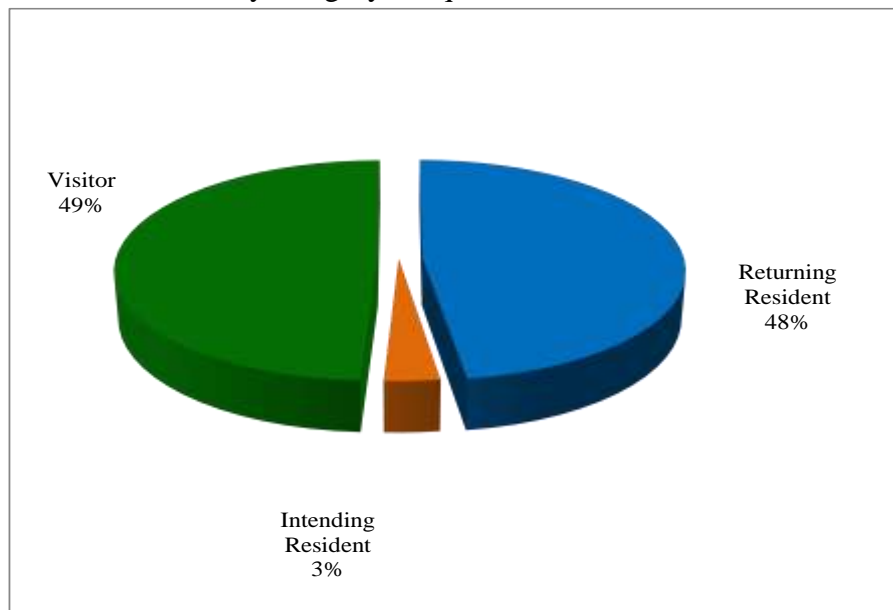


Table 2: Visitor Arrivals by Country of Residence by year by quarter: 2<sup>nd</sup> Quarter 2016

| Country of Usual Residence | 2013         |              |              |              |               | 2014         |              |              |              |               | 2015         |              |              |              |               | 2016         |              |
|----------------------------|--------------|--------------|--------------|--------------|---------------|--------------|--------------|--------------|--------------|---------------|--------------|--------------|--------------|--------------|---------------|--------------|--------------|
|                            | Q1           | Q2           | Q3           | Q4           | Total         | Q1           | Q2           | Q3           | Q4           | Total         | Q1           | Q2           | Q3           | Q4           | Total         | Q1           | Q2           |
| Australia                  | 2,282        | 3,049        | 3,001        | 2,849        | 11,181        | 2088         | 2,225        | 2,521        | 2,300        | 9,134         | 1,750        | 2,519        | 2,599        | 2,641        | 9,509         | 2,024        | 2,445        |
| PNG                        | 458          | 417          | 621          | 523          | 2,019         | 383          | 260          | 275          | 325          | 1,243         | 323          | 398          | 236          | 384          | 1,341         | 307          | 243          |
| US                         | 231          | 325          | 357          | 248          | 1,161         | 231          | 362          | 324          | 220          | 1,137         | 329          | 322          | 388          | 374          | 1,413         | 359          | 444          |
| NZ                         | 381          | 531          | 607          | 386          | 1,905         | 277          | 343          | 404          | 382          | 1,406         | 281          | 376          | 439          | 355          | 1,451         | 279          | 439          |
| UK                         | 104          | 110          | 152          | 94           | 460           | 65           | 99           | 77           | 96           | 337           | 69           | 111          | 90           | 117          | 387           | 93           | 82           |
| Japan                      | 128          | 116          | 179          | 178          | 601           | 137          | 84           | 172          | 112          | 505           | 124          | 91           | 232          | 134          | 581           | 122          | 83           |
| Germany                    | 33           | 19           | 35           | 49           | 136           | 15           | 30           | 35           | 22           | 102           | 25           | 26           | 24           | 34           | 109           | 35           | 29           |
| Canada                     | 28           | 35           | 40           | 45           | 148           | 38           | 43           | 42           | 26           | 149           | 28           | 34           | 31           | 60           | 153           | 37           | 44           |
| Oth.Pacific                | 188          | 142          | 202          | 228          | 760           | 139          | 81           | 184          | 167          | 571           | 127          | 139          | 126          | 188          | 580           | 122          | 149          |
| Vanuatu                    | 250          | 185          | 191          | 178          | 804           | 117          | 171          | 100          | 141          | 529           | 109          | 152          | 162          | 186          | 609           | 175          | 131          |
| Hong Kong                  | 16           | 18           | 33           | 14           | 81            | 35           | 11           | 28           | 21           | 95            | 25           | 32           | 18           | 18           | 93            | 21           | 16           |
| Fiji                       | 451          | 424          | 528          | 397          | 1,800         | 351          | 361          | 273          | 270          | 1,255         | 268          | 405          | 358          | 360          | 1,391         | 351          | 365          |
| Other Asia                 | 623          | 655          | 743          | 604          | 2,625         | 689          | 580          | 658          | 497          | 2,424         | 603          | 609          | 624          | 590          | 2,426         | 720          | 842          |
| Netherlands                | 10           | 6            | 24           | 23           | 63            | 7            | 18           | 13           | 11           | 49            | 11           | 11           | 12           | 21           | 55            | 21           | 17           |
| Oth.Europe                 | 53           | 57           | 70           | 107          | 287           | 119          | 76           | 130          | 103          | 428           | 101          | 109          | 113          | 119          | 442           | 111          | 101          |
| France                     | 21           | 21           | 26           | 25           | 93            | 21           | 19           | 33           | 13           | 86            | 10           | 15           | 22           | 130          | 177           | 23           | 24           |
| Italy                      | 16           | 18           | 16           | 33           | 83            | 14           | 10           | 21           | 30           | 75            | 21           | 16           | 10           | 14           | 61            | 32           | 11           |
| China                      | -            | -            | -            | -            | -             | -            | 103          | 167          | 155          | 425           | 164          | 177          | 212          | 189          | 742           | 166          | 194          |
| Oth.Country                | 45           | 67           | 62           | 50           | 224           | 28           | 49           | 26           | 17           | 120           | 31           | 20           | 18           | 34           | 103           | 39           | 20           |
| <b>Total</b>               | <b>5,318</b> | <b>6,195</b> | <b>6,887</b> | <b>6,031</b> | <b>24,431</b> | <b>4,754</b> | <b>4,925</b> | <b>5,483</b> | <b>4,908</b> | <b>20,070</b> | <b>4,399</b> | <b>5,562</b> | <b>5,714</b> | <b>5,948</b> | <b>21,623</b> | <b>5,037</b> | <b>5,679</b> |
|                            | Percentage   |              |              |              |               |              |              |              |              |               |              |              |              |              |               |              |              |
| Australia                  | 42.9         | 49.2         | 43.6         | 47.2         | 45.8          | 43.9         | 45.2         | 46.0         | 46.9         | 45.5          | 39.8         | 45.3         | 45.5         | 44.4         | 44.0          | 40.2         | 43.1         |
| PNG                        | 8.6          | 6.7          | 9.0          | 8.7          | 8.3           | 8.1          | 5.3          | 5.0          | 6.6          | 6.2           | 7.3          | 7.2          | 4.1          | 6.5          | 6.2           | 6.1          | 4.3          |
| US                         | 4.3          | 5.2          | 5.2          | 4.1          | 4.8           | 4.9          | 7.4          | 5.9          | 4.5          | 5.7           | 7.5          | 5.8          | 6.8          | 6.3          | 6.5           | 7.1          | 7.8          |
| NZ                         | 7.2          | 8.6          | 8.8          | 6.4          | 7.8           | 5.8          | 7.0          | 7.4          | 7.8          | 7.0           | 6.4          | 6.8          | 7.7          | 6.0          | 6.7           | 5.5          | 7.7          |
| UK                         | 2.0          | 1.8          | 2.2          | 1.6          | 1.9           | 1.4          | 2.0          | 1.4          | 2.0          | 1.7           | 1.6          | 2.0          | 1.6          | 2.0          | 1.8           | 1.8          | 1.4          |
| Japan                      | 2.4          | 1.9          | 2.6          | 3.0          | 2.5           | 2.9          | 1.7          | 3.1          | 2.3          | 2.5           | 2.8          | 1.6          | 4.1          | 2.3          | 2.7           | 2.4          | 1.5          |
| Germany                    | 0.6          | 0.3          | 0.5          | 0.8          | 0.6           | 0.3          | 0.6          | 0.6          | 0.4          | 0.5           | 0.6          | 0.5          | 0.4          | 0.6          | 0.5           | 0.7          | 0.5          |
| Canada                     | 0.5          | 0.6          | 0.6          | 0.7          | 0.6           | 0.8          | 0.9          | 0.8          | 0.5          | 0.7           | 0.6          | 0.6          | 0.5          | 1.0          | 0.7           | 0.7          | 0.8          |
| Oth.Pacific                | 3.5          | 2.3          | 2.9          | 3.8          | 3.1           | 2.9          | 1.6          | 3.4          | 3.4          | 2.8           | 2.9          | 2.5          | 2.2          | 3.2          | 2.7           | 2.4          | 2.6          |
| Vanuatu                    | 4.7          | 3.0          | 2.8          | 3.0          | 3.3           | 2.5          | 3.5          | 1.8          | 2.9          | 2.6           | 2.5          | 2.7          | 2.8          | 3.1          | 2.8           | 3.5          | 2.3          |
| Hong Kong                  | 0.3          | 0.3          | 0.5          | 0.2          | 0.3           | 0.7          | 0.2          | 0.5          | 0.4          | 0.5           | 0.6          | 0.6          | 0.3          | 0.3          | 0.4           | 0.4          | 0.3          |
| Fiji                       | 8.5          | 6.8          | 7.7          | 6.6          | 7.4           | 7.4          | 7.3          | 5.0          | 5.5          | 6.3           | 6.1          | 7.3          | 6.3          | 6.1          | 6.4           | 7.0          | 6.4          |
| Other Asia                 | 11.7         | 10.6         | 10.8         | 10.0         | 10.7          | 14.5         | 11.8         | 12.0         | 10.1         | 12.1          | 13.7         | 10.9         | 10.9         | 9.9          | 11.2          | 14.3         | 14.8         |
| Netherlands                | 0.2          | 0.1          | 0.3          | 0.4          | 0.3           | 0.1          | 0.4          | 0.2          | 0.2          | 0.2           | 0.3          | 0.2          | 0.2          | 0.4          | 0.3           | 0.4          | 0.3          |
| Oth.Europe                 | 1.0          | 0.9          | 1.0          | 1.8          | 1.2           | 2.5          | 1.5          | 2.4          | 2.1          | 2.1           | 2.3          | 2.0          | 2.0          | 2.0          | 2.0           | 2.2          | 1.8          |
| France                     | 0.4          | 0.3          | 0.4          | 0.4          | 0.4           | 0.4          | 0.4          | 0.6          | 0.3          | 0.4           | 0.2          | 0.3          | 0.4          | 2.2          | 0.8           | 0.5          | 0.4          |
| Italy                      | 0.3          | 0.3          | 0.2          | 0.5          | 0.3           | 0.3          | 0.2          | 0.4          | 0.6          | 0.4           | 0.5          | 0.3          | 0.2          | 0.2          | 0.3           | 0.6          | 0.2          |
| China*                     | -            | -            | -            | -            | -             | -            | 2.1          | 3.0          | 3.2          | 2.1           | 3.7          | 3.2          | 3.7          | 3.2          | 3.4           | 3.3          | 3.4          |
| Oth.Country                | 0.8          | 1.1          | 0.9          | 0.8          | 0.9           | 0.6          | 1.0          | 0.5          | 0.3          | 0.6           | 0.7          | 0.4          | 0.3          | 0.6          | 0.5           | 0.8          | 0.4          |
| <b>Total</b>               | <b>100.0</b> | <b>100.0</b> | <b>100.0</b> | <b>100.0</b> | <b>100.0</b>  | <b>100.0</b> | <b>100.0</b> | <b>100.0</b> | <b>100.0</b> | <b>100.0</b>  | <b>100.0</b> | <b>100.0</b> | <b>100.0</b> | <b>100.0</b> | <b>100.0</b>  | <b>100.0</b> | <b>100.0</b> |

\*Figures for 'China' for previous quarters was included in 'Other Asia'

Chart 2: Visitors Arrival by Country of residence by quarter, 2<sup>nd</sup> quarter 2016

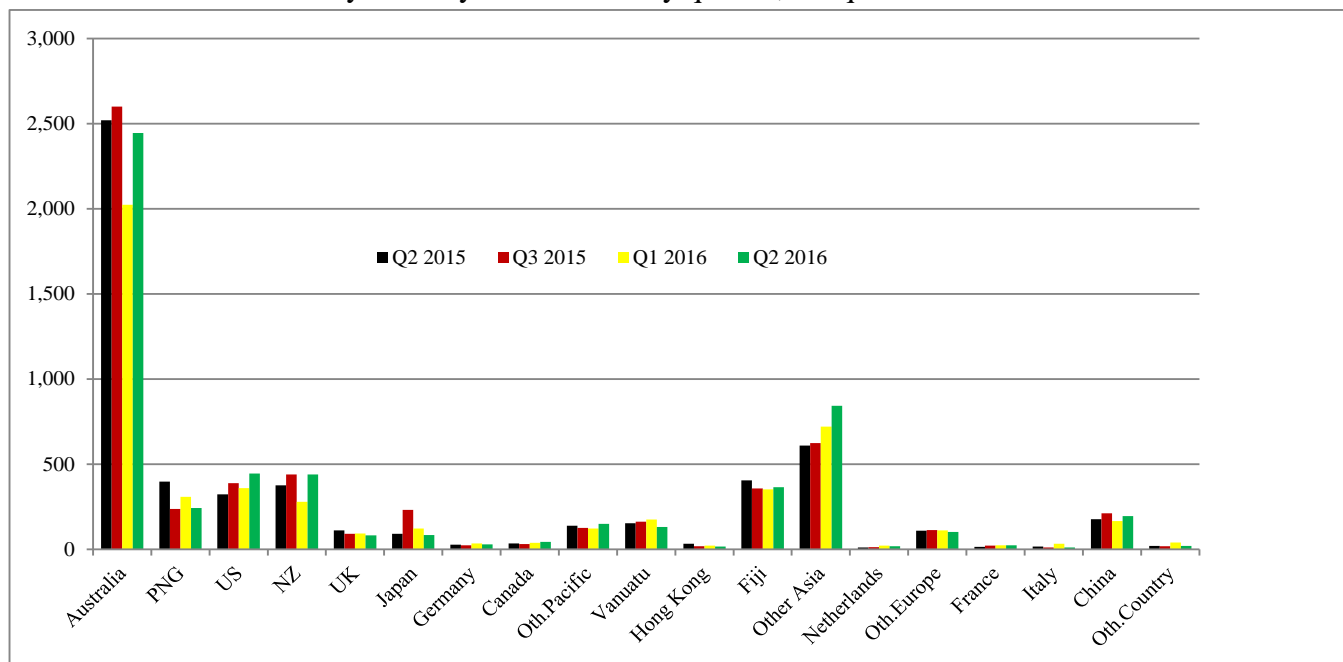


Table 3: Visitor Arrivals by Month: 2007 – 2<sup>nd</sup> Quarter 2016

| Month        | 2007          | 2008          | 2009          | 2010          | 2011          | 2012          | 2013          | 2014          | 2015          | 2016          |
|--------------|---------------|---------------|---------------|---------------|---------------|---------------|---------------|---------------|---------------|---------------|
| January      | 546           | 889           | 1,602         | 1,235         | 1,600         | 1,383         | 1,590         | 1,415         | 1,259         | 1,655         |
| February     | 1,020         | 1,282         | 1,422         | 1,209         | 1,658         | 1,591         | 1,544         | 1,523         | 1,465         | 1,707         |
| March        | 1,251         | 802           | 1,249         | 1,766         | 1,861         | 1,677         | 2,184         | 1,816         | 1,675         | 1,675         |
| April        | 1,452         | 1,388         | 1,499         | 1,820         | 1,736         | 1,839         | 2,021         | 1,514         | 1,750         | 1,799         |
| May          | 1,137         | 1,261         | 1,393         | 1,137         | 1,760         | 1,968         | 1,857         | 1,462         | 1,681         | 1,896         |
| June         | 1,265         | 1,552         | 1,724         | 1,797         | 2,009         | 3,122         | 2,317         | 1,949         | 2,131         | 1,984         |
| July         | 822           | 1,692         | 1,603         | 2,264         | 2,185         | 2,865         | 2,574         | 2,114         | 2,077         |               |
| August       | 1,299         | 1,469         | 1,520         | 1,845         | 1,900         | 2,133         | 2,022         | 1,639         | 1,426         |               |
| September    | 1,299         | 1,457         | 1,659         | 2,153         | 2,159         | 2,309         | 2,291         | 1,730         | 2,211         |               |
| October      | 1,260         | 1,399         | 1,709         | 1,813         | 1,931         | 1,929         | 2,057         | 1,798         | 1,748         |               |
| November     | 1,246         | 1,545         | 1,475         | 1,624         | 2,195         | 1,545         | 1,981         | 1,515         | 2,101         |               |
| December     | 1,151         | 1,528         | 1,405         | 1,858         | 1,947         | 1,564         | 1,993         | 1,595         | 2,099         |               |
| <b>Total</b> | <b>13,748</b> | <b>16,264</b> | <b>18,260</b> | <b>20,521</b> | <b>22,941</b> | <b>23,925</b> | <b>24,431</b> | <b>20,070</b> | <b>21,623</b> | <b>10,716</b> |

| Percentage   |              |              |              |              |              |              |              |              |              |              |
|--------------|--------------|--------------|--------------|--------------|--------------|--------------|--------------|--------------|--------------|--------------|
| January      | 4.0          | 5.5          | 8.8          | 5.5          | 7.0          | 5.8          | 6.5          | 7.1          | 5.8          | 15.4         |
| February     | 7.4          | 7.9          | 7.8          | 5.4          | 7.2          | 6.6          | 6.3          | 7.6          | 6.8          | 15.9         |
| March        | 9.1          | 4.9          | 6.8          | 7.8          | 8.1          | 7.0          | 8.9          | 9.0          | 7.7          | 15.6         |
| April        | 10.6         | 8.5          | 8.2          | 8.1          | 7.6          | 7.7          | 8.3          | 7.5          | 8.1          | 16.8         |
| May          | 8.3          | 7.8          | 7.6          | 5.0          | 7.7          | 8.2          | 7.6          | 7.3          | 7.8          | 17.7         |
| June         | 9.2          | 9.5          | 9.4          | 8.0          | 8.8          | 13.0         | 9.5          | 9.7          | 9.9          | 18.5         |
| July         | 6.0          | 10.4         | 8.8          | 10.0         | 9.5          | 12.0         | 10.5         | 10.5         | 9.6          |              |
| August       | 9.4          | 9.0          | 8.3          | 8.2          | 8.3          | 8.9          | 8.3          | 8.2          | 6.6          |              |
| September    | 9.4          | 9.0          | 9.1          | 9.6          | 9.4          | 9.7          | 9.4          | 8.6          | 10.2         |              |
| October      | 9.2          | 8.6          | 9.4          | 8.0          | 8.4          | 8.1          | 8.4          | 9.0          | 8.1          |              |
| November     | 9.1          | 9.5          | 8.1          | 7.2          | 9.6          | 6.5          | 8.1          | 7.5          | 9.7          |              |
| December     | 8.4          | 9.4          | 7.7          | 8.2          | 8.5          | 6.5          | 8.2          | 7.9          | 9.7          |              |
| <b>Total</b> | <b>100.0</b> | <b>100.0</b> | <b>100.0</b> | <b>100.0</b> | <b>100.0</b> | <b>100.0</b> | <b>100.0</b> | <b>100.0</b> | <b>100.0</b> | <b>100.0</b> |

Chart 3: Visitors Arrival by month, 2013 – 2<sup>nd</sup> quarter 2016

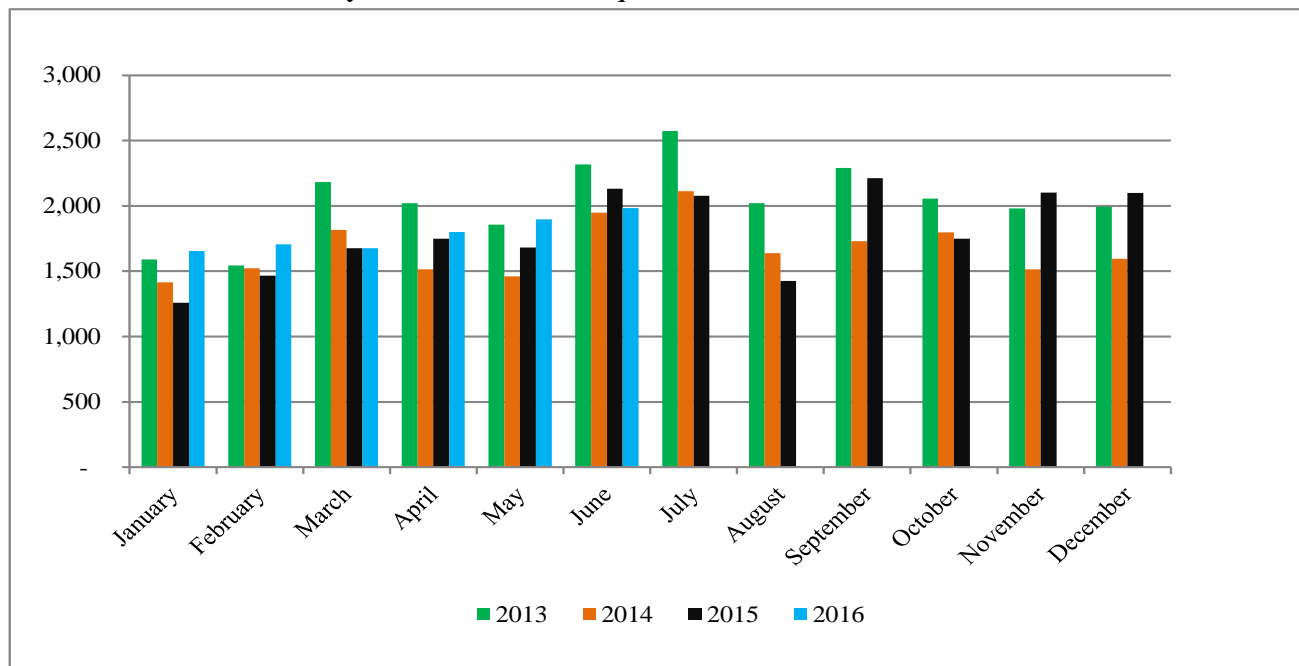




Table 4: Visitors, classified as tourists by Country of residence by year, quarter and average length of stay: 2<sup>nd</sup> quarter 2014 – 2<sup>nd</sup> Quarter 2016

| Country of Usual Residence | 2014      |     |           |     |           |     | 2015      |     |           |     |           |     |           |     | 2016      |     |           |     |
|----------------------------|-----------|-----|-----------|-----|-----------|-----|-----------|-----|-----------|-----|-----------|-----|-----------|-----|-----------|-----|-----------|-----|
|                            | Quarter 2 |     | Quarter 3 |     | Quarter 4 |     | Quarter 1 |     | Quarter 2 |     | Quarter 3 |     | Quarter 4 |     | Quarter 1 |     | Quarter 2 |     |
|                            | tourist   | day | tourist   | day | tourist   | day | tourist   | day | tourist   | day | tourist   | day | tourist   | day | tourist   | day | tourist   | day |
| Australia                  | 745       | 13  | 890       | 15  | 782       | 16  | 476       | 14  | 575       | 12  | 920       | 11  | 935       | 12  | 649       | 11  | 912       | 12  |
| PNG                        | 50        | 8   | 42        | 12  | 95        | 19  | 49        | 7   | 67        | 4   | 41        | 10  | 97        | 20  | 66        | 8   | 37        | 11  |
| US                         | 208       | 10  | 169       | 13  | 126       | 12  | 126       | 7   | 103       | 14  | 141       | 11  | 227       | 11  | 162       | 8   | 283       | 12  |
| NZ                         | 35        | 10  | 63        | 17  | 81        | 18  | 21        | 8   | 31        | 22  | 76        | 13  | 83        | 19  | 32        | 19  | 66        | 15  |
| UK                         | 28        | 26  | 34        | 23  | 52        | 14  | 33        | 20  | 29        | 15  | 47        | 15  | 73        | 16  | 31        | 13  | 38        | 17  |
| Japan                      | 10        | 11  | 69        | 14  | 47        | 7   | 48        | 7   | 20        | 7   | 121       | 6   | 60        | 7   | 49        | 9   | 32        | 11  |
| Germany                    | 12        | 11  | 26        | 17  | 11        | 18  | 14        | 6   | 12        | 19  | 16        | 16  | 23        | 20  | 17        | 21  | 19        | 14  |
| Canada                     | 24        | 9   | 20        | 14  | 11        | 13  | 17        | 14  | 17        | 13  | 12        | 15  | 43        | 9   | 21        | 14  | 22        | 9   |
| Oth.Pacific                | 10        | 8   | 19        | 14  | 22        | 25  | 11        | 11  | 15        | 17  | 23        | 9   | 40        | 15  | 25        | 9   | 17        | 8   |
| Vanuatu                    | 32        | 6   | 23        | 17  | 37        | 10  | 20        | 5   | 18        | 14  | 29        | 10  | 53        | 20  | 28        | 16  | 15        | 14  |
| Hong Kong                  | 1         | 7   | 9         | 13  | 4         | 6   | 7         | 12  | 12        | 7   | 4         | 19  | 6         | 8   | 8         | 5   | 10        | 12  |
| Fiji                       | 28        | 11  | 20        | 14  | 21        | 27  | 23        | 18  | 24        | 27  | 30        | 31  | 49        | 25  | 51        | 13  | 46        | 21  |
| Oth.Asia                   | 162       | 22  | 196       | 21  | 113       | 23  | 129       | 21  | 135       | 18  | 128       | 25  | 123       | 19  | 189       | 15  | 222       | 15  |
| Netherlands                | 9         | 13  | 9         | 23  | 2         | 30  | 8         | 11  | 2         | 12  | 2         | 6   | 11        | 10  | 14        | 16  | 10        | 12  |
| Oth.Europe                 | 32        | 17  | 80        | 17  | 51        | 18  | 64        | 12  | 47        | 11  | 68        | 9   | 70        | 15  | 63        | 10  | 59        | 16  |
| France                     | 9         | 12  | 24        | 18  | 5         | 9   | 3         | 15  | 4         | 11  | 16        | 11  | 103       | 7   | 10        | 9   | 14        | 13  |
| Italy                      | 5         | 11  | 16        | 13  | 14        | 31  | 6         | 17  | 6         | 5   | 3         | 24  | 3         | 51  | 13        | 20  | 5         | 13  |
| China                      | 28        | 35  | 57        | 25  | 59        | 12  | 41        | 21  | 50        | 16  | 77        | 25  | 69        | 19  | 50        | 17  | 77        | 15  |
| Oth.Country                | 16        | 13  | 10        | 13  | 5         | 18  | 9         | 30  | 3         | 10  | 6         | 17  | 19        | 14  | 19        | 16  | 3         | 2   |
| Total                      | 1,444     | 14  | 1,776     | 16  | 1,538     | 16  | 1,105     | 14  | 1,170     | 13  | 1,760     | 13  | 2,087     | 14  | 1,497     | 12  | 1,887     | 13  |

Chart 4: Tourist Arrivals by Country of Residence, 2<sup>nd</sup> Quarter 2016

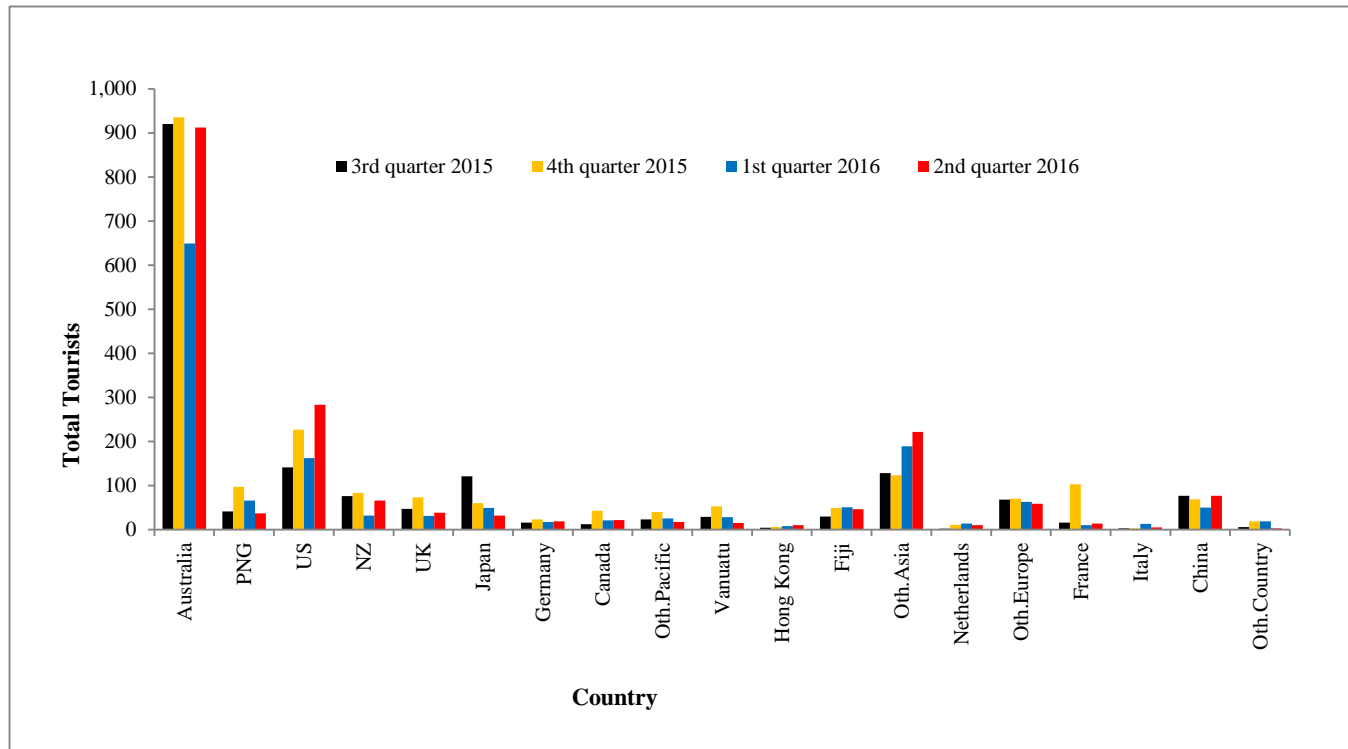


Table 5: Visitor Arrivals by Country of Residence by Purpose of Visit by sex: 2<sup>nd</sup> Quarter 2016

| Country of Usual Residence | Business & Conference |            |             | Holiday & Vocation |             |             | Transit & Stopover |            |            | Visit friends/Relatives |            |             | Other       |            |             | Total        |              |              |
|----------------------------|-----------------------|------------|-------------|--------------------|-------------|-------------|--------------------|------------|------------|-------------------------|------------|-------------|-------------|------------|-------------|--------------|--------------|--------------|
|                            | M                     | F          | T           | M                  | F           | T           | M                  | F          | T          | M                       | F          | T           | M           | F          | T           | M            | F            | All          |
| Australia                  | 462                   | 124        | 586         | 545                | 351         | 896         | 12                 | 4          | 16         | 199                     | 183        | 382         | 392         | 173        | 565         | 1,610        | 835          | 2,445        |
| PNG                        | 81                    | 21         | 102         | 15                 | 14          | 29          | 6                  | 2          | 8          | 34                      | 20         | 54          | 41          | 9          | 50          | 177          | 66           | 243          |
| US                         | 40                    | 19         | 59          | 141                | 139         | 280         | 1                  | 2          | 3          | 15                      | 19         | 34          | 54          | 14         | 68          | 251          | 193          | 444          |
| NZ                         | 145                   | 36         | 181         | 48                 | 17          | 65          | 1                  | -          | 1          | 25                      | 29         | 54          | 99          | 39         | 138         | 318          | 121          | 439          |
| UK                         | 5                     | 3          | 8           | 22                 | 15          | 37          | 1                  | -          | 1          | 8                       | 6          | 14          | 14          | 8          | 22          | 50           | 32           | 82           |
| Japan                      | 24                    | 3          | 27          | 26                 | 6           | 32          | -                  | -          | -          | 4                       | 6          | 10          | 11          | 3          | 14          | 65           | 18           | 83           |
| Germany                    | 3                     | 4          | 7           | 13                 | 6           | 19          | -                  | -          | -          | 1                       | -          | 1           | 1           | 1          | 2           | 18           | 11           | 29           |
| Canada                     | 10                    | 3          | 13          | 13                 | 8           | 21          | -                  | 1          | 1          | 3                       | 4          | 7           | 2           | -          | 2           | 28           | 16           | 44           |
| Oth.Pacific                | 49                    | 23         | 72          | 7                  | 8           | 15          | 1                  | 1          | 2          | 4                       | 9          | 13          | 34          | 13         | 47          | 95           | 54           | 149          |
| Vanuatu                    | 25                    | 11         | 36          | 6                  | 7           | 13          | 1                  | 1          | 2          | 13                      | 18         | 31          | 23          | 26         | 49          | 68           | 63           | 131          |
| Hong Kong                  | 1                     | 2          | 3           | 7                  | 3           | 10          | -                  | -          | -          | 2                       | -          | 2           | 1           | -          | 1           | 11           | 5            | 16           |
| Fiji                       | 127                   | 45         | 172         | 25                 | 16          | 41          | 3                  | 2          | 5          | 32                      | 35         | 67          | 47          | 33         | 80          | 234          | 131          | 365          |
| Oth.Asia                   | 250                   | 18         | 268         | 164                | 48          | 212         | 8                  | 2          | 10         | 83                      | 23         | 106         | 216         | 30         | 246         | 721          | 121          | 842          |
| Netherlands                | 2                     | -          | 2           | 4                  | 6           | 10          | -                  | -          | -          | 2                       | 2          | 4           | 1           | -          | 1           | 9            | 8            | 17           |
| Oth.Europe                 | 16                    | 3          | 19          | 38                 | 15          | 53          | 6                  | -          | 6          | 2                       | 4          | 6           | 13          | 4          | 17          | 75           | 26           | 101          |
| France                     | 3                     | 2          | 5           | 8                  | 6           | 14          | -                  | -          | -          | 1                       | -          | 1           | 2           | 2          | 4           | 14           | 10           | 24           |
| Italy                      | 1                     | -          | 1           | 2                  | 3           | 5           | -                  | -          | -          | 1                       | -          | 1           | 4           | -          | 4           | 8            | 3            | 11           |
| China                      | 35                    | 4          | 39          | 52                 | 24          | 76          | 1                  | -          | 1          | 11                      | 6          | 17          | 50          | 11         | 61          | 149          | 45           | 194          |
| Oth.Country                | 8                     | 2          | 10          | 3                  | -           | 3           | -                  | -          | -          | 2                       | 2          | 4           | 3           | -          | 3           | 16           | 4            | 20           |
| <b>Total</b>               | <b>1287</b>           | <b>323</b> | <b>1610</b> | <b>1139</b>        | <b>692</b>  | <b>1831</b> | <b>41</b>          | <b>15</b>  | <b>56</b>  | <b>442</b>              | <b>366</b> | <b>808</b>  | <b>1008</b> | <b>366</b> | <b>1374</b> | <b>3,917</b> | <b>1,762</b> | <b>5,679</b> |
| <b>Percentage</b>          |                       |            |             |                    |             |             |                    |            |            |                         |            |             |             |            |             |              |              |              |
| Australia                  | 18.9                  | 5.1        | 24.0        | 22.3               | 14.4        | 36.6        | 0.5                | 0.2        | 0.7        | 8.1                     | 7.5        | 15.6        | 16.0        | 7.1        | 23.1        | 65.8         | 34.2         | 100.0        |
| PNG                        | 33.3                  | 8.6        | 42.0        | 6.2                | 5.8         | 11.9        | 2.5                | 0.8        | 3.3        | 14.0                    | 8.2        | 22.2        | 16.9        | 3.7        | 20.6        | 72.8         | 27.2         | 100.0        |
| US                         | 9.0                   | 4.3        | 13.3        | 31.8               | 31.3        | 63.1        | 0.2                | 0.5        | 0.7        | 3.4                     | 4.3        | 7.7         | 12.2        | 3.2        | 15.3        | 56.5         | 43.5         | 100.0        |
| NZ                         | 33.0                  | 8.2        | 41.2        | 10.9               | 3.9         | 14.8        | 0.2                | -          | 0.2        | 5.7                     | 6.6        | 12.3        | 22.6        | 8.9        | 31.4        | 72.4         | 27.6         | 100.0        |
| UK                         | 6.1                   | 3.7        | 9.8         | 26.8               | 18.3        | 45.1        | 1.2                | -          | 1.2        | 9.8                     | 7.3        | 17.1        | 17.1        | 9.8        | 26.8        | 61.0         | 39.0         | 100.0        |
| Japan                      | 28.9                  | 3.6        | 32.5        | 31.3               | 7.2         | 38.6        | -                  | -          | -          | 4.8                     | 7.2        | 12.0        | 13.3        | 3.6        | 16.9        | 78.3         | 21.7         | 100.0        |
| Germany                    | 10.3                  | 13.8       | 24.1        | 44.8               | 20.7        | 65.5        | -                  | -          | -          | 3.4                     | -          | 3.4         | 3.4         | 3.4        | 6.9         | 62.1         | 37.9         | 100.0        |
| Canada                     | 22.7                  | 6.8        | 29.5        | 29.5               | 18.2        | 47.7        | -                  | 2.3        | 2.3        | 6.8                     | 9.1        | 15.9        | 4.5         | -          | 4.5         | 63.6         | 36.4         | 100.0        |
| Oth.Pacific                | 32.9                  | 15.4       | 48.3        | 4.7                | 5.4         | 10.1        | 0.7                | 0.7        | 1.3        | 2.7                     | 6.0        | 8.7         | 22.8        | 8.7        | 31.5        | 63.8         | 36.2         | 100.0        |
| Vanuatu                    | 19.1                  | 8.4        | 27.5        | 4.6                | 5.3         | 9.9         | 0.8                | 0.8        | 1.5        | 9.9                     | 13.7       | 23.7        | 17.6        | 19.8       | 37.4        | 51.9         | 48.1         | 100.0        |
| Hong Kong                  | 6.3                   | 12.5       | 18.8        | 43.8               | 18.8        | 62.5        | -                  | -          | -          | 12.5                    | -          | 12.5        | 6.3         | -          | 6.3         | 68.8         | 31.3         | 100.0        |
| Fiji                       | 34.8                  | 12.3       | 47.1        | 6.8                | 4.4         | 11.2        | 0.8                | 0.5        | 1.4        | 8.8                     | 9.6        | 18.4        | 12.9        | 9.0        | 21.9        | 64.1         | 35.9         | 100.0        |
| Oth.Asia                   | 29.7                  | 2.1        | 31.8        | 19.5               | 5.7         | 25.2        | 1.0                | 0.2        | 1.2        | 9.9                     | 2.7        | 12.6        | 25.7        | 3.6        | 29.2        | 85.6         | 14.4         | 100.0        |
| Netherlands                | 11.8                  | -          | 11.8        | 23.5               | 35.3        | 58.8        | -                  | -          | -          | 11.8                    | 11.8       | 23.5        | 5.9         | -          | 5.9         | 52.9         | 47.1         | 100.0        |
| Oth.Europe                 | 15.8                  | 3.0        | 18.8        | 37.6               | 14.9        | 52.5        | 5.9                | -          | 5.9        | 2.0                     | 4.0        | 5.9         | 12.9        | 4.0        | 16.8        | 74.3         | 25.7         | 100.0        |
| France                     | 12.5                  | 8.3        | 20.8        | 33.3               | 25.0        | 58.3        | -                  | -          | -          | 4.2                     | -          | 4.2         | 8.3         | 8.3        | 16.7        | 58.3         | 41.7         | 100.0        |
| Italy                      | 9.1                   | -          | 9.1         | 18.2               | 27.3        | 45.5        | -                  | -          | -          | 9.1                     | 0.0        | 9.1         | 36.4        | -          | 36.4        | 72.7         | 27.3         | 100.0        |
| China                      | 18.0                  | 2.1        | 20.1        | 26.8               | 12.4        | 39.2        | 0.5                | -          | 0.5        | 5.7                     | 3.1        | 8.8         | 25.8        | 5.7        | 31.4        | 76.8         | 23.2         | 100.0        |
| Oth.Country                | 40.0                  | 10.0       | 50.0        | 15.0               | -           | 15.0        | -                  | -          | -          | 10.0                    | 10.0       | 20.0        | 15.0        | -          | 15.0        | 80.0         | 20.0         | 100.0        |
| <b>Total</b>               | <b>22.7</b>           | <b>5.7</b> | <b>28.4</b> | <b>20.1</b>        | <b>12.2</b> | <b>32.2</b> | <b>0.7</b>         | <b>0.3</b> | <b>1.0</b> | <b>7.8</b>              | <b>6.4</b> | <b>14.2</b> | <b>17.7</b> | <b>6.4</b> | <b>24.2</b> | <b>69.0</b>  | <b>31.0</b>  | <b>100.0</b> |

Chart 5: Visitors Arrival by Country of Residence by Purpose of Visit, 2<sup>nd</sup> quarter 2016

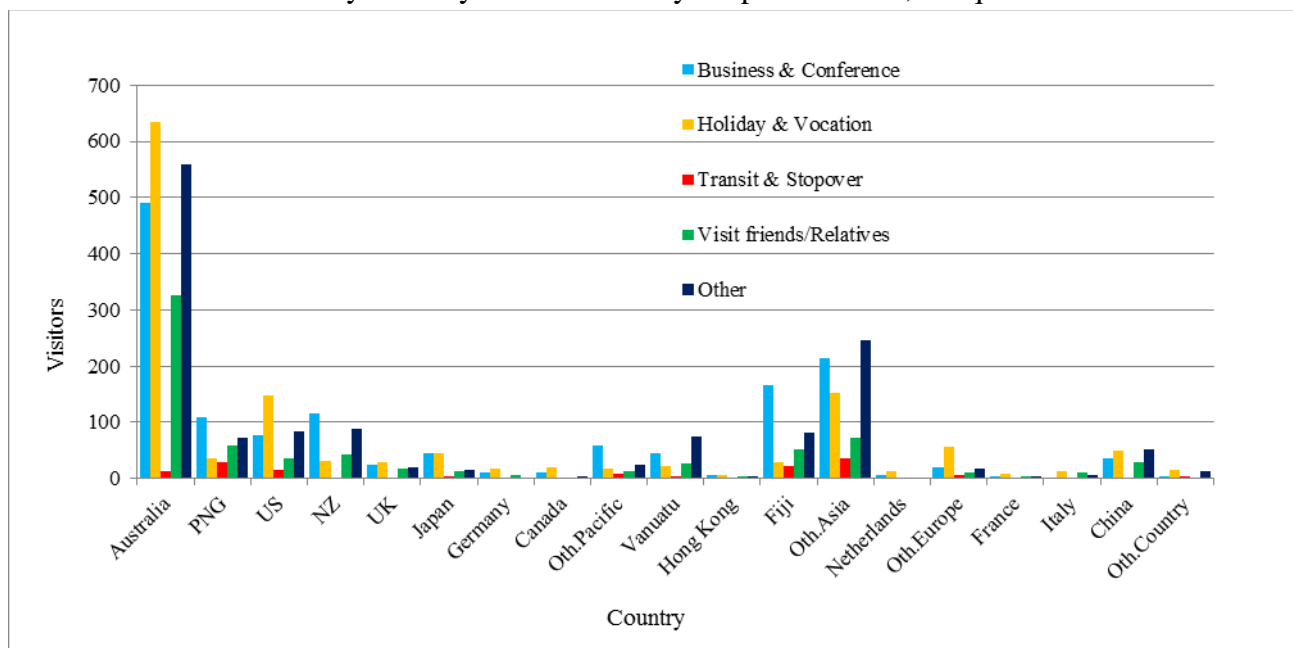


Table 6: Visitor Arrivals by Country of Residence by Age Groups by Sex: 2<sup>nd</sup> Quarter 2016

| Country of Usual Residence | Age-Group |     |       |      |       |      |       |      |       |      |       |      |      |      |            |     | Total |       |       |
|----------------------------|-----------|-----|-------|------|-------|------|-------|------|-------|------|-------|------|------|------|------------|-----|-------|-------|-------|
|                            | 0-14      |     | 15-24 |      | 25-34 |      | 35-44 |      | 45-54 |      | 55-64 |      | 65+  |      | Not Stated |     | M     | F     | All   |
|                            | M         | F   | M     | F    | M     | F    | M     | F    | M     | F    | M     | F    | M    | F    | M          | F   | M     | F     | All   |
| Australia                  | 34        | 33  | 103   | 123  | 174   | 121  | 289   | 116  | 347   | 166  | 365   | 162  | 206  | 59   | 92         | 55  | 1,610 | 835   | 2,445 |
| PNG                        | 1         | 1   | 2     | 5    | 35    | 19   | 45    | 11   | 49    | 12   | 25    | 8    | 6    | 2    | 14         | 8   | 177   | 66    | 243   |
| US                         | 4         | 7   | 9     | 13   | 29    | 23   | 33    | 19   | 54    | 27   | 49    | 40   | 54   | 48   | 19         | 16  | 251   | 193   | 444   |
| NZ                         | 6         | 3   | 25    | 19   | 36    | 14   | 46    | 22   | 85    | 30   | 67    | 20   | 34   | 8    | 19         | 5   | 318   | 121   | 439   |
| UK                         | -         | 1   | 3     | 7    | 14    | 9    | 5     | 3    | 8     | 6    | 10    | 4    | 6    | 2    | 4          | -   | 50    | 32    | 82    |
| Japan                      | -         | -   | 1     | 1    | 10    | 5    | 13    | 3    | 16    | 5    | 16    | 2    | 8    | 2    | 1          | -   | 65    | 18    | 83    |
| Germany                    | -         | -   | 2     | 3    | 3     | 3    | 3     | 1    | 2     | 2    | 5     | 1    | 2    | -    | 1          | 1   | 18    | 11    | 29    |
| Canada                     | -         | -   | 1     | 3    | 3     | 3    | 7     | 3    | 9     | 3    | 4     | 2    | 3    | 2    | 1          | -   | 28    | 16    | 44    |
| Oth.Pacific                | -         | 2   | 7     | 8    | 29    | 18   | 18    | 8    | 22    | 4    | 11    | 6    | 3    | 2    | 5          | 6   | 95    | 54    | 149   |
| Vanuatu                    | -         | -   | 3     | 2    | 11    | 8    | 15    | 7    | 20    | 19   | 10    | 16   | 3    | 2    | 6          | 9   | 68    | 63    | 131   |
| Hong Kong                  | -         | -   | -     | 1    | 3     | 2    | 1     | 2    | 3     | -    | 1     | -    | 3    | -    | -          | -   | 11    | 5     | 16    |
| Fiji                       | 3         | -   | 13    | 11   | 61    | 29   | 49    | 25   | 48    | 29   | 37    | 23   | 5    | 7    | 18         | 7   | 234   | 131   | 365   |
| Oth.Asia                   | 3         | 2   | 37    | 12   | 140   | 26   | 180   | 22   | 193   | 27   | 105   | 18   | 30   | 7    | 33         | 7   | 721   | 121   | 842   |
| Netherlands                | -         | -   | -     | -    | 1     | 2    | 1     | 1    | 3     | 2    | 1     | 1    | 3    | 2    | -          | -   | 9     | 8     | 17    |
| Oth.Europe                 | -         | -   | 1     | 15   | 10    | 16   | 2     | 23   | 6     | 12   | 3     | 3    | 3    | 2    | 6          | 2   | 75    | 26    | 101   |
| France                     | -         | -   | 4     | 2    | 4     | 3    | 5     | 3    | -     | 1    | 1     | -    | -    | 1    | -          | -   | 14    | 10    | 24    |
| Italy                      | -         | -   | 1     | 1    | 1     | -    | 2     | -    | 1     | 1    | 2     | 1    | 1    | -    | -          | -   | 8     | 3     | 11    |
| China                      | -         | -   | 8     | 2    | 55    | 18   | 36    | 8    | 29    | 5    | 9     | 6    | 4    | 1    | 8          | 5   | 149   | 45    | 194   |
| Oth.Country                | -         | -   | -     | -    | 3     | -    | 5     | -    | 5     | 1    | 1     | 2    | -    | 1    | 2          | -   | 16    | 4     | 20    |
| Total                      | 51        | 49  | 219   | 214  | 627   | 313  | 769   | 256  | 917   | 346  | 731   | 315  | 374  | 148  | 229        | 121 | 3,917 | 1,762 | 5,679 |
| Percentage                 |           |     |       |      |       |      |       |      |       |      |       |      |      |      |            |     |       |       |       |
| Australia                  | 1.4       | 1.3 | 4.2   | 5.0  | 7.1   | 4.9  | 11.8  | 4.7  | 14.2  | 6.8  | 14.9  | 6.6  | 8.4  | 2.4  | 3.8        | 2.2 | 65.8  | 34.2  | 100.0 |
| PNG                        | 0.4       | 0.4 | 0.8   | 2.1  | 14.4  | 7.8  | 18.5  | 4.5  | 20.2  | 4.9  | 10.3  | 3.3  | 2.5  | 0.8  | 5.8        | 3.3 | 72.8  | 27.2  | 100.0 |
| US                         | 0.9       | 1.6 | 2.0   | 2.9  | 6.5   | 5.2  | 7.4   | 4.3  | 12.2  | 6.1  | 11.0  | 9.0  | 12.2 | 10.8 | 4.3        | 3.6 | 56.5  | 43.5  | 100.0 |
| NZ                         | 1.4       | 0.7 | 5.7   | 4.3  | 8.2   | 3.2  | 10.5  | 5.0  | 19.4  | 6.8  | 15.3  | 4.6  | 7.7  | 1.8  | 4.3        | 1.1 | 72.4  | 27.6  | 100.0 |
| UK                         | -         | 1.2 | 3.7   | 8.5  | 17.1  | 11.0 | 6.1   | 3.7  | 9.8   | 7.3  | 12.2  | 4.9  | 7.3  | 2.4  | 4.9        | -   | 61.0  | 39.0  | 100.0 |
| Japan                      | -         | -   | 1.2   | 1.2  | 12.0  | 6.0  | 15.7  | 3.6  | 19.3  | 6.0  | 19.3  | 2.4  | 9.6  | 2.4  | 1.2        | -   | 78.3  | 21.7  | 100.0 |
| Germany                    | -         | -   | 6.9   | 10.3 | 10.3  | 10.3 | 10.3  | 3.4  | 6.9   | 6.9  | 17.2  | 3.4  | 6.9  | -    | 3.4        | 3.4 | 62.1  | 37.9  | 100.0 |
| Canada                     | -         | -   | 2.3   | 6.8  | 6.8   | 6.8  | 15.9  | 6.8  | 20.5  | 6.8  | 9.1   | 4.5  | 6.8  | 4.5  | 2.3        | -   | 63.6  | 36.4  | 100.0 |
| Oth.Pacific                | -         | 1.3 | 4.7   | 5.4  | 19.5  | 12.1 | 12.1  | 5.4  | 14.8  | 2.7  | 7.4   | 4.0  | 2.0  | 1.3  | 3.4        | 4.0 | 63.8  | 36.2  | 100.0 |
| Vanuatu                    | -         | -   | 2.3   | 1.5  | 8.4   | 6.1  | 11.5  | 5.3  | 15.3  | 14.5 | 7.6   | 12.2 | 2.3  | 1.5  | 4.6        | 6.9 | 51.9  | 48.1  | 100.0 |
| Hong Kong                  | -         | -   | -     | 6.3  | 18.8  | 12.5 | 6.3   | 12.5 | 18.8  | -    | 6.3   | -    | 18.8 | -    | -          | -   | 68.8  | 31.3  | 100.0 |
| Fiji                       | 0.8       | -   | 3.6   | 3.0  | 16.7  | 7.9  | 13.4  | 6.8  | 13.2  | 7.9  | 10.1  | 6.3  | 1.4  | 1.9  | 4.9        | 1.9 | 64.1  | 35.9  | 100.0 |
| Oth.Asia                   | 0.4       | 0.2 | 4.4   | 1.4  | 16.6  | 3.1  | 21.4  | 2.6  | 22.9  | 3.2  | 12.5  | 2.1  | 3.6  | 0.8  | 3.9        | 0.8 | 85.6  | 14.4  | 100.0 |
| Netherlands                | -         | -   | -     | -    | 5.9   | 11.8 | 5.9   | 5.9  | 17.6  | 11.8 | 5.9   | 5.9  | 17.6 | 11.8 | -          | -   | 52.9  | 47.1  | 100.0 |
| Oth.Europe                 | -         | -   | -     | 1.0  | 14.9  | 9.9  | 15.8  | 2.0  | 22.8  | 5.9  | 11.9  | 3.0  | 3.0  | 2.0  | 5.9        | 2.0 | 74.3  | 25.7  | 100.0 |
| France                     | -         | -   | 16.7  | 8.3  | 16.7  | 12.5 | 20.8  | 12.5 | -     | 4.2  | 4.2   | -    | -    | 4.2  | -          | -   | 58.3  | 41.7  | 100.0 |
| Italy                      | -         | -   | 9.1   | 9.1  | 9.1   | -    | 18.2  | -    | 9.1   | 9.1  | 18.2  | 9.1  | 9.1  | -    | -          | -   | 72.7  | 27.3  | 100.0 |
| China                      | -         | -   | 4.1   | 1.0  | 28.4  | 9.3  | 18.6  | 4.1  | 14.9  | 2.6  | 4.6   | 3.1  | 2.1  | 0.5  | 4.1        | 2.6 | 76.8  | 23.2  | 100.0 |
| Oth.Country                | -         | -   | -     | -    | 15.0  | 0.0  | 25.0  | -    | 25.0  | 5.0  | 5.0   | 10.0 | -    | 5.0  | 10.0       | -   | 80.0  | 20.0  | 100.0 |
| Total                      | 0.9       | 0.9 | 3.9   | 3.8  | 11.0  | 5.5  | 13.5  | 4.5  | 16.1  | 6.1  | 12.9  | 5.5  | 6.6  | 2.6  | 4.0        | 2.1 | 69.0  | 31.0  | 100.0 |

Chart 6: Visitor Arrivals by Age group category by sex, 2<sup>nd</sup> quarter 2016

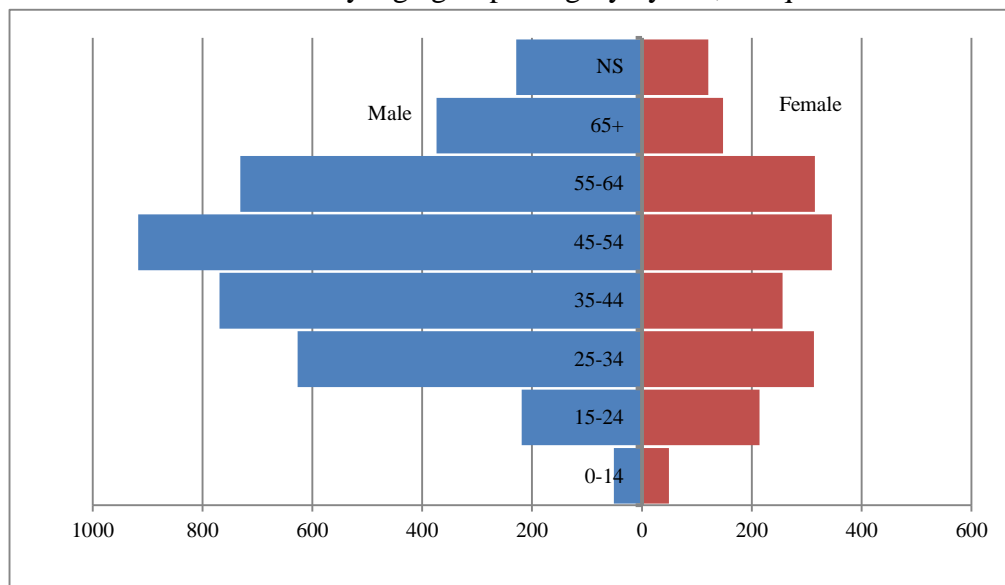


Table 7: Visitor Arrivals by Country of Residence by Occupation and Sex: 2<sup>nd</sup> Quarter 2016

| Country of Usual Residence | Professional and Technical |      | Administration and Managerial |     | Clerical & Related Work |     | Sales Worker |     | Service Worker |      | Agriculture Forestry Fishery |     | Production & Related Work |     | Other |      | No Work |      | Total |       |       |
|----------------------------|----------------------------|------|-------------------------------|-----|-------------------------|-----|--------------|-----|----------------|------|------------------------------|-----|---------------------------|-----|-------|------|---------|------|-------|-------|-------|
|                            | M                          | F    | M                             | F   | M                       | F   | M            | F   | M              | F    | M                            | F   | M                         | F   | M     | F    | M       | F    | M     | F     | All   |
| Australia                  | 520                        | 341  | 180                           | 75  | 4                       | 11  | 26           | 4   | 42             | 30   | 8                            | 1   | 79                        | -   | 594   | 258  | 157     | 115  | 1,610 | 835   | 2,445 |
| PNG                        | 42                         | 14   | 30                            | 7   | -                       | -   | 1            | -   | 4              | 4    | 1                            | -   | 4                         | -   | 95    | 32   | 9       | 9    | 177   | 66    | 243   |
| US                         | 70                         | 56   | 8                             | 3   | 1                       | 3   | -            | -   | 15             | 6    | -                            | -   | 4                         | -   | 86    | 67   | 67      | 58   | 251   | 193   | 444   |
| NZ                         | 91                         | 32   | 48                            | 14  | 1                       | 1   | 3            | -   | 20             | 5    | 5                            | 1   | 6                         | 2   | 131   | 55   | 13      | 11   | 318   | 121   | 439   |
| UK                         | 18                         | 14   | -                             | 2   | 2                       | -   | 1            | -   | -              | 1    | -                            | -   | 1                         | -   | 25    | 12   | 3       | 3    | 50    | 32    | 82    |
| Japan                      | 12                         | 2    | 3                             | -   | 2                       | -   | 1            | -   | -              | 3    | -                            | -   | -                         | -   | 42    | 13   | 5       | -    | 65    | 18    | 83    |
| Germany                    | 5                          | 2    | 2                             | 1   | -                       | 1   | -            | 1   | -              | -    | -                            | -   | -                         | -   | 8     | 5    | 3       | 1    | 18    | 11    | 29    |
| Canada                     | 9                          | 7    | 1                             | 1   | -                       | 1   | 2            | -   | 3              | -    | -                            | -   | -                         | -   | 10    | 4    | 3       | 3    | 28    | 16    | 44    |
| Oth.Pacific                | 21                         | 10   | 2                             | 1   | 2                       | 2   | -            | -   | 8              | 4    | -                            | -   | 1                         | -   | 52    | 25   | 9       | 12   | 95    | 54    | 149   |
| Vanuatu                    | 33                         | 13   | 4                             | 7   | 2                       | 2   | 1            | -   | 2              | 23   | -                            | -   | -                         | -   | 25    | 16   | 1       | 2    | 68    | 63    | 131   |
| Hong Kong                  | -                          | 2    | 3                             | 1   | -                       | -   | 2            | -   | -              | -    | -                            | -   | -                         | -   | 4     | 2    | 2       | -    | 11    | 5     | 16    |
| Fiji                       | 70                         | 28   | 37                            | 10  | 6                       | 1   | 4            | -   | 4              | 7    | -                            | -   | 7                         | -   | 93    | 71   | 13      | 14   | 234   | 131   | 365   |
| Oth.Asia                   | 102                        | 27   | 77                            | 7   | 2                       | -   | 74           | 8   | 5              | 19   | 14                           | -   | 85                        | -   | 305   | 41   | 57      | 19   | 721   | 121   | 842   |
| Netherlands                | 2                          | 2    | 1                             | 1   | -                       | -   | -            | -   | -              | -    | -                            | -   | -                         | -   | 5     | 3    | 1       | 2    | 9     | 8     | 17    |
| Oth.Europe                 | 26                         | 13   | 14                            | -   | 1                       | 2   | -            | -   | -              | -    | -                            | -   | -                         | -   | 31    | 8    | 3       | 3    | 75    | 26    | 101   |
| France                     | 7                          | 2    | -                             | 2   | -                       | -   | -            | -   | -              | -    | -                            | -   | -                         | -   | 7     | 4    | -       | 2    | 14    | 10    | 24    |
| Italy                      | 3                          | 2    | 1                             | -   | -                       | -   | -            | -   | 1              | -    | -                            | -   | -                         | -   | 2     | -    | 1       | 1    | 8     | 3     | 11    |
| China                      | 26                         | 2    | 33                            | 6   | -                       | 1   | 5            | 2   | -              | 2    | 2                            | 3   | 2                         | -   | 37    | 7    | 44      | 22   | 149   | 45    | 194   |
| Oth.Country                | 4                          | -    | 1                             | -   | 1                       | -   | 1            | 1   | -              | -    | 1                            | -   | 1                         | -   | 5     | 2    | 2       | 1    | 16    | 4     | 20    |
| Total                      | 1,061                      | 569  | 445                           | 138 | 24                      | 25  | 121          | 16  | 104            | 104  | 31                           | 5   | 190                       | 2   | 1,557 | 625  | 384     | 278  | 3,917 | 1,762 | 5,679 |
| Percentage                 |                            |      |                               |     |                         |     |              |     |                |      |                              |     |                           |     |       |      |         |      |       |       |       |
| Australia                  | 21.3                       | 13.9 | 7.4                           | 3.1 | 0.2                     | 0.4 | 1.1          | 0.2 | 1.7            | 1.2  | 0.3                          | -   | 3.2                       | -   | 24.3  | 10.6 | 6.4     | 4.7  | 65.8  | 34.2  | 100.0 |
| PNG                        | 17.3                       | 5.8  | 12.3                          | 2.9 | -                       | -   | 0.4          | -   | 1.6            | 1.6  | 0.4                          | -   | 1.6                       | -   | 39.1  | 13.2 | -       | 3.7  | 72.8  | 27.2  | 100.0 |
| US                         | 15.8                       | 12.6 | 1.8                           | 0.7 | 0.2                     | 0.7 | -            | -   | 3.4            | 1.4  | -                            | -   | 0.9                       | -   | 19.4  | 15.1 | 15.1    | 13.1 | 56.5  | 43.5  | 100.0 |
| NZ                         | 20.7                       | 7.3  | 10.9                          | 3.2 | 0.2                     | 0.2 | 0.7          | -   | 4.6            | 1.1  | 1.1                          | 0.2 | 1.4                       | 0.5 | 29.8  | 12.5 | 3.0     | 2.5  | 72.4  | 27.6  | 100.0 |
| UK                         | 22.0                       | 17.1 | -                             | 2.4 | 2.4                     | -   | 1.2          | -   | -              | 1.2  | -                            | -   | 1.2                       | -   | 30.5  | 14.6 | 3.7     | 3.7  | 61.0  | 39.0  | 100.0 |
| Japan                      | 14.5                       | 2.4  | 3.6                           | -   | 2.4                     | -   | 1.2          | -   | -              | 3.6  | -                            | -   | -                         | -   | 50.6  | 15.7 | 6.0     | -    | 78.3  | 21.7  | 100.0 |
| Germany                    | 17.2                       | 6.9  | 6.9                           | 3.4 | -                       | 3.4 | -            | 3.4 | -              | -    | -                            | -   | -                         | -   | 27.6  | 17.2 | 10.3    | 3.4  | 62.1  | 37.9  | 100.0 |
| Canada                     | 20.5                       | 15.9 | 2.3                           | 2.3 | -                       | 2.3 | 4.5          | -   | 6.8            | -    | -                            | -   | -                         | -   | 22.7  | 9.1  | 6.8     | 6.8  | 63.6  | 36.4  | 100.0 |
| Oth.Pacific                | 14.1                       | 6.7  | 1.3                           | 0.7 | 1.3                     | 1.3 | -            | -   | 5.4            | 2.7  | -                            | -   | 0.7                       | -   | 34.9  | 16.8 | 6.0     | 8.1  | 63.8  | 36.2  | 100.0 |
| Vanuatu                    | 25.2                       | 9.9  | 3.1                           | 5.3 | 1.5                     | 1.5 | 0.8          | -   | 1.5            | 17.6 | -                            | -   | -                         | -   | 19.1  | 12.2 | 0.8     | 1.5  | 51.9  | 48.1  | 100.0 |
| Hong Kong                  | -                          | 12.5 | 18.8                          | 6.3 | -                       | -   | 12.5         | -   | -              | -    | -                            | -   | -                         | -   | 25.0  | 12.5 | 12.5    | 0.0  | 68.8  | 31.3  | 100.0 |
| Fiji                       | 19.2                       | 7.7  | 10.1                          | 2.7 | 1.6                     | 0.3 | 1.1          | -   | 1.1            | 1.9  | -                            | -   | 1.9                       | -   | 25.5  | 19.5 | 3.6     | 3.8  | 64.1  | 35.9  | 100.0 |
| Oth.Asia                   | 12.1                       | 3.2  | 9.1                           | 0.8 | 0.2                     | -   | 8.8          | 1.0 | 0.6            | 2.3  | 1.7                          | -   | 10.1                      | -   | 36.2  | 4.9  | 6.8     | 2.3  | 85.6  | 14.4  | 100.0 |
| Netherlands                | 11.8                       | 11.8 | 5.9                           | 5.9 | -                       | -   | -            | -   | -              | -    | -                            | -   | -                         | -   | 29.4  | 17.6 | 5.9     | 11.8 | 52.9  | 47.1  | 100.0 |
| Oth.Europe                 | 25.7                       | 12.9 | 13.9                          | -   | 1.0                     | 2.0 | -            | -   | -              | -    | -                            | -   | -                         | -   | 30.7  | 7.9  | 3.0     | 3.0  | 74.3  | 25.7  | 100.0 |
| France                     | 29.2                       | 8.3  | -                             | 8.3 | -                       | -   | -            | -   | -              | -    | -                            | -   | -                         | -   | 29.2  | 16.7 | -       | 8.3  | 58.3  | 41.7  | 100.0 |
| Italy                      | 27.3                       | 18.2 | 9.1                           | -   | -                       | -   | -            | -   | 9.1            | -    | -                            | -   | -                         | -   | 18.2  | -    | 9.1     | 9.1  | 72.7  | 27.3  | 100.0 |
| China                      | 13.4                       | 1.0  | 17.0                          | 3.1 | -                       | 0.5 | 2.6          | 1.0 | -              | 1.0  | 1.5                          | 1.0 | 1.0                       | -   | 19.1  | 3.6  | 22.7    | 11.3 | 76.8  | 23.2  | 100.0 |
| Oth.Country                | 20.0                       | -    | 5.0                           | -   | 5.0                     | -   | 5.0          | 5.0 | -              | -    | 5.0                          | -   | 5.0                       | -   | 25.0  | 10.0 | 10.0    | 5.0  | 80.0  | 20.0  | 100.0 |
| Total                      | 18.7                       | 10.0 | 7.8                           | 2.4 | 0.4                     | 0.4 | 2.1          | 0.3 | 1.8            | 1.8  | 0.5                          | 0.1 | 3.3                       | -   | 27.4  | 11.0 | 6.8     | 4.9  | 69.0  | 31.0  | 100.0 |

Chart 7: Visitors Arrival by occupation by sex, 2<sup>nd</sup> quarter 2016

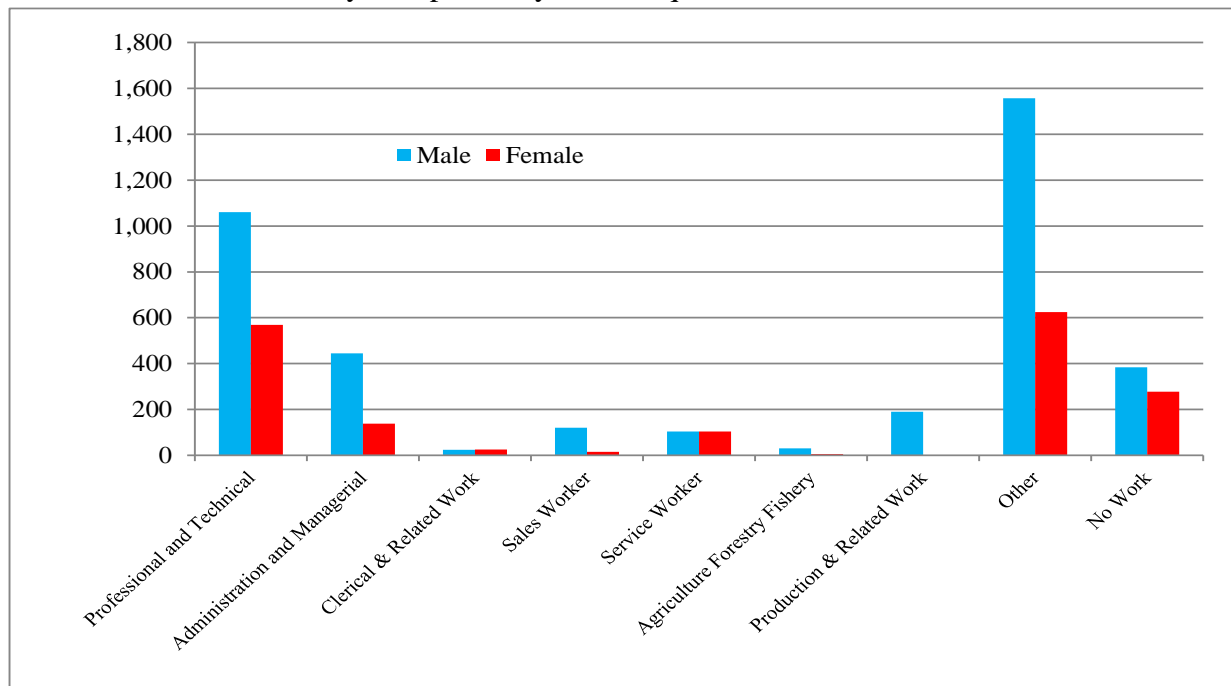
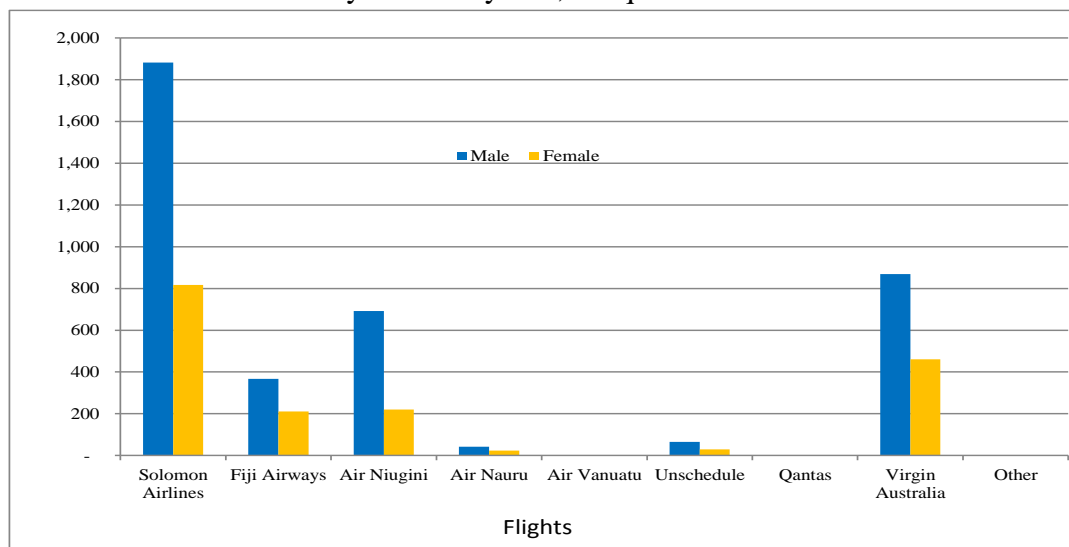


Table 8: Visitor Arrivals by Country of residence by Carrier by Sex: 2<sup>nd</sup> Quarter 2016

| Country of Usual Residence | Solomon Airlines |             | Fiji Airways |            | Air Niugini |            | Air Nauru  |            | Air Vanuatu |          | Unschedule |            | Qantas   |             | Virgin Australia |             | Total        |              |              |
|----------------------------|------------------|-------------|--------------|------------|-------------|------------|------------|------------|-------------|----------|------------|------------|----------|-------------|------------------|-------------|--------------|--------------|--------------|
|                            | M                | F           | M            | F          | M           | F          | M          | F          | M           | F        | M          | F          | M        | F           | M                | F           | M            | F            | All          |
|                            | Australia        | 1005        | 523          | 17         | 8           | 48         | 6          | 1          | 1           | -        | -          | 12         | 3        | -           | -                | 527         | 294          | 1,610        | 835          |
| PNG                        | 17               | 4           | 4            | 1          | 151         | 59         | 1          | -          | -           | -        | 1          | -          | -        | -           | 3                | 2           | 177          | 66           | 243          |
| US                         | 89               | 54          | 87           | 71         | 28          | 18         | 1          | 1          | -           | -        | 23         | 23         | -        | -           | 23               | 26          | 251          | 193          | 444          |
| NZ                         | 138              | 44          | 15           | 4          | 16          | 4          | 1          | -          | -           | -        | 19         | -          | -        | -           | 129              | 69          | 318          | 121          | 439          |
| UK                         | 28               | 11          | 6            | 4          | 6           | 5          | -          | -          | -           | -        | 2          | 2          | -        | -           | 8                | 10          | 50           | 32           | 82           |
| Japan                      | 21               | 3           | 2            | 1          | 25          | 8          | 1          | -          | -           | -        | -          | -          | -        | 16          | 6                | 65          | 18           | 83           |              |
| Germany                    | 5                | 7           | 2            | 1          | 4           | -          | 2          | -          | -           | -        | -          | -          | -        | 5           | 3                | 18          | 11           | 29           |              |
| Canada                     | 14               | 6           | 5            | 7          | 3           | -          | 1          | -          | -           | -        | 1          | 1          | -        | 4           | 2                | 28          | 16           | 44           |              |
| Oth.Pacific                | 21               | 14          | 29           | 19         | 9           | 3          | 30         | 16         | -           | -        | -          | -          | -        | 6           | 2                | 95          | 54           | 149          |              |
| Vanuatu                    | 34               | 52          | 3            | 1          | 28          | 10         | -          | -          | -           | -        | -          | -          | -        | 3           | -                | 68          | 63           | 131          |              |
| Hong Kong                  | 9                | 3           | 1            | -          | 1           | 2          | -          | -          | -           | -        | -          | -          | -        | -           | -                | 11          | 5            | 16           |              |
| Fiji                       | 53               | 27          | 146          | 84         | 31          | 19         | -          | -          | -           | -        | -          | -          | -        | 4           | 1                | 234         | 131          | 365          |              |
| Oth.Asia                   | 365              | 39          | 25           | 4          | 220         | 45         | 2          | 4          | -           | -        | -          | -          | -        | 109         | 29               | 721         | 121          | 842          |              |
| Netherlands                | 4                | 3           | -            | 1          | -           | 1          | -          | -          | -           | -        | -          | -          | -        | 5           | 3                | 9           | 8            | 17           |              |
| Oth.Europe                 | 39               | 12          | 2            | 3          | 15          | 6          | 1          | -          | -           | -        | 5          | -          | -        | 13          | 5                | 75          | 26           | 101          |              |
| France                     | 3                | 3           | 1            | 1          | 8           | 3          | -          | -          | -           | -        | -          | -          | -        | 2           | 3                | 14          | 10           | 24           |              |
| Italy                      | -                | -           | -            | -          | 3           | -          | 1          | 1          | -           | -        | -          | -          | -        | 4           | 2                | 8           | 3            | 11           |              |
| China                      | 29               | 10          | 20           | 1          | 95          | 30         | -          | 1          | -           | -        | -          | -          | -        | 5           | 3                | 149         | 45           | 194          |              |
| Oth.Country                | 8                | 2           | 2            | -          | 1           | 1          | -          | -          | -           | -        | 2          | -          | -        | 3           | 1                | 16          | 4            | 20           |              |
| <b>Total</b>               | <b>1,882</b>     | <b>817</b>  | <b>367</b>   | <b>211</b> | <b>692</b>  | <b>220</b> | <b>42</b>  | <b>24</b>  | <b>-</b>    | <b>-</b> | <b>65</b>  | <b>29</b>  | <b>-</b> | <b>-</b>    | <b>869</b>       | <b>461</b>  | <b>3,917</b> | <b>1,762</b> | <b>5,679</b> |
| <b>Percentage</b>          |                  |             |              |            |             |            |            |            |             |          |            |            |          |             |                  |             |              |              |              |
| Australia                  | 41.1             | 21.4        | 0.7          | 0.3        | 2.0         | 0.2        | -          | -          | -           | -        | 0.5        | 0.1        | -        | -           | 21.6             | 12.0        | 65.8         | 34.2         | 100.0        |
| PNG                        | 7.0              | 1.6         | 1.6          | 0.4        | 62.1        | 24.3       | 0.4        | -          | -           | -        | 0.4        | -          | -        | 1.2         | 0.8              | 72.8        | 27.2         | 100.0        |              |
| US                         | 20.0             | 12.2        | 19.6         | 16.0       | 6.3         | 4.1        | 0.2        | 0.2        | -           | -        | 5.2        | 5.2        | -        | 5.2         | 5.9              | 56.5        | 43.5         | 100.0        |              |
| NZ                         | 31.4             | 10.0        | 3.4          | 0.9        | 3.6         | 0.9        | 0.2        | -          | -           | -        | 4.3        | -          | -        | 29.4        | 15.7             | 72.4        | 27.6         | 100.0        |              |
| UK                         | 34.1             | 13.4        | 7.3          | 4.9        | 7.3         | 6.1        | -          | -          | -           | -        | 2.4        | 2.4        | -        | 9.8         | 12.2             | 61.0        | 39.0         | 100.0        |              |
| Japan                      | 25.3             | 3.6         | 2.4          | 1.2        | 30.1        | 9.6        | 1.2        | -          | -           | -        | -          | -          | -        | 19.3        | 7.2              | 78.3        | 21.7         | 100.0        |              |
| Germany                    | 17.2             | 24.1        | 6.9          | 3.4        | 13.8        | -          | 6.9        | -          | -           | -        | -          | -          | -        | 17.2        | 10.3             | 62.1        | 37.9         | 100.0        |              |
| Canada                     | 31.8             | 13.6        | 11.4         | 15.9       | 6.8         | -          | 2.3        | -          | -           | -        | 2.3        | 2.3        | -        | 9.1         | 4.5              | 63.6        | 36.4         | 100.0        |              |
| Oth.Pacific                | 14.1             | 9.4         | 19.5         | 12.8       | 6.0         | 2.0        | 20.1       | 10.7       | -           | -        | -          | -          | -        | 4.0         | 1.3              | 63.8        | 36.2         | 100.0        |              |
| Vanuatu                    | 26.0             | 39.7        | 2.3          | 0.8        | 21.4        | 7.6        | -          | -          | -           | -        | -          | -          | -        | 2.3         | -                | 51.9        | 48.1         | 100.0        |              |
| Hong Kong                  | 56.3             | 18.8        | 6.3          | 0.0        | 6.3         | 12.5       | -          | -          | -           | -        | -          | -          | -        | -           | -                | 68.8        | 31.3         | 100.0        |              |
| Fiji                       | 14.5             | 7.4         | 40.0         | 23.0       | 8.5         | 5.2        | -          | -          | -           | -        | -          | -          | -        | 1.1         | 0.3              | 64.1        | 35.9         | 100.0        |              |
| Oth.Asia                   | 43.3             | 4.6         | 3.0          | 0.5        | 26.1        | 5.3        | 0.2        | 0.5        | -           | -        | -          | -          | -        | 12.9        | 3.4              | 85.6        | 14.4         | 100.0        |              |
| Netherlands                | 23.5             | 17.6        | -            | 5.9        | -           | 5.9        | -          | -          | -           | -        | -          | -          | -        | 29.4        | 17.6             | 52.9        | 47.1         | 100.0        |              |
| Oth.Europe                 | 38.6             | 11.9        | 2.0          | 3.0        | 14.9        | 5.9        | 1.0        | -          | -           | -        | 5.0        | -          | -        | 12.9        | 5.0              | 74.3        | 25.7         | 100.0        |              |
| France                     | 12.5             | 12.5        | 4.2          | 4.2        | 33.3        | 12.5       | -          | -          | -           | -        | -          | -          | -        | 8.3         | 12.5             | 58.3        | 41.7         | 100.0        |              |
| Italy                      | -                | -           | -            | -          | 27.3        | -          | 9.1        | 9.1        | -           | -        | -          | -          | -        | 36.4        | 18.2             | 72.7        | 27.3         | 100.0        |              |
| China                      | 14.9             | 5.2         | 10.3         | 0.5        | 49.0        | 15.5       | -          | 0.5        | -           | -        | -          | -          | -        | 2.6         | 1.5              | 76.8        | 23.2         | 100.0        |              |
| Oth.Country                | 40.0             | 10.0        | 10.0         | -          | 5.0         | 5.0        | -          | -          | -           | -        | 10.0       | -          | -        | 15.0        | 5.0              | 80.0        | 20.0         | 100.0        |              |
| <b>Total</b>               | <b>33.1</b>      | <b>14.4</b> | <b>6.5</b>   | <b>3.7</b> | <b>12.2</b> | <b>3.9</b> | <b>0.7</b> | <b>0.4</b> | <b>-</b>    | <b>-</b> | <b>1.1</b> | <b>0.5</b> | <b>-</b> | <b>15.3</b> | <b>8.1</b>       | <b>69.0</b> | <b>31.0</b>  | <b>100.0</b> |              |

Chart 8: Visitor Arrivals by Carrier by Sex, 2<sup>nd</sup> quarter 2016



## Appendix 1

### Concepts and Definitions

Persons entering Solomon Islands classify themselves into three (3) categories; returning resident, intending resident, and visitor. The concepts and definitions of the various categories are as follows:

#### (i) *Returning residents*

- Solomon Islanders and non-Solomon Islanders who have left the country and are returning to continue their residence.
- Non Solomon Islanders includes resident permit holders and Diplomatic officials, and their immediate family members. This may also includes legal or official arrangements that fall out side of the above.

#### (ii) *Intending residents*

- Non-Solomon Islander who wish to take up residence in Solomon Islands.

#### (iii) *Visitors*

- Any traveller who is not a Solomon Islander and who purposely spend less time – at most a period of 120 days<sup>2</sup>, in the country and with the intention and purpose of visiting.
- *Tourist*
  - Visitors who further classify themselves stating their visit are purposely for '*holiday and vacation*'. This exclude, tourist arrivals by cruise ships.
  - Wife accompanying husband on business purpose is a private tourist unless also working.
  - *World Tourism Organization WTO definition of Tourism:*  
*It comprises the activities of persons travelling to and staying in places outside their usual environment for not more than one consecutive year for leisure, business and other purposes not related to the exercise of an activity remunerated from within the place visited*<sup>3</sup>.

#### ( iv) *Markets*

- *Country of Usual Residence*

---

<sup>2</sup> Solomon Islands 1993 Statistical Yearbook.

<sup>3</sup> Dimensions of Hospitality, Study guide 1. p17

Appendix 2

Table 9: Intending Resident Arrivals by Country of Residence by Occupation and Sex: 2<sup>nd</sup> Quarter 2016

| Country of Usual Residence | Professional and Technical |            | Administration and Managerial |            | Clerical & Related Work |            | Sales Worker |            | Service Worker |            | Agriculture Forestry Fishery |            | Production & Related Work |          | Other       |            | No Work     |            | Total       |             |              |
|----------------------------|----------------------------|------------|-------------------------------|------------|-------------------------|------------|--------------|------------|----------------|------------|------------------------------|------------|---------------------------|----------|-------------|------------|-------------|------------|-------------|-------------|--------------|
|                            | M                          | F          | M                             | F          | M                       | F          | M            | F          | M              | F          | M                            | F          | M                         | F        | M           | F          | M           | F          | M           | F           | All          |
| Australia                  | 2                          | 6          | 2                             | 1          | -                       | -          | 1            | -          | 2              | 3          | -                            | -          | -                         | -        | 6           | 7          | 1           | 2          | 14          | 19          | 33           |
| PNG                        | 2                          | 2          | 1                             | -          | -                       | -          | 1            | -          | -              | -          | -                            | -          | -                         | -        | 1           | 1          | -           | -          | 5           | 3           | 8            |
| US                         | -                          | 1          | -                             | -          | -                       | -          | -            | -          | -              | -          | -                            | -          | -                         | 1        | 1           | -          | -           | 1          | 2           | 3           |              |
| NZ                         | 2                          | -          | -                             | 1          | -                       | -          | -            | -          | -              | -          | -                            | -          | 2                         | -        | 1           | 2          | -           | -          | 5           | 3           | 8            |
| UK                         | -                          | -          | -                             | -          | -                       | -          | -            | -          | -              | -          | -                            | -          | -                         | -        | -           | -          | 1           | -          | 1           | -           | 1            |
| Japan                      | 1                          | -          | 2                             | -          | 1                       | -          | -            | -          | -              | -          | -                            | -          | -                         | -        | 6           | 2          | 1           | -          | 11          | 2           | 13           |
| Germany                    | -                          | -          | -                             | 1          | -                       | -          | -            | -          | -              | -          | -                            | -          | -                         | -        | -           | -          | -           | -          | -           | 1           | 1            |
| Canada                     | 1                          | -          | -                             | -          | -                       | -          | -            | -          | -              | -          | -                            | -          | -                         | -        | -           | -          | -           | -          | 1           | -           | 1            |
| Oth.Pacific                | 1                          | -          | 1                             | -          | -                       | -          | -            | -          | 1              | 2          | -                            | -          | -                         | -        | 3           | -          | -           | -          | 6           | 2           | 8            |
| Vanuatu                    | 2                          | 2          | -                             | -          | -                       | -          | -            | -          | -              | -          | -                            | -          | -                         | -        | -           | 1          | -           | -          | 2           | 3           | 5            |
| Hong Kong                  | -                          | -          | 1                             | -          | -                       | -          | -            | -          | -              | -          | -                            | -          | -                         | -        | -           | -          | -           | -          | 1           | -           | 1            |
| Fiji                       | 1                          | 1          | 2                             | -          | -                       | -          | -            | -          | -              | -          | -                            | -          | -                         | -        | -           | -          | -           | -          | 3           | 1           | 4            |
| Oth.Asia                   | 8                          | 2          | 15                            | 3          | -                       | -          | 15           | -          | -              | -          | 11                           | 1          | 35                        | -        | 50          | 4          | 40          | -          | 174         | 10          | 184          |
| Netherlands                | -                          | -          | -                             | -          | -                       | -          | -            | -          | -              | -          | -                            | -          | -                         | -        | -           | -          | -           | -          | -           | -           | -            |
| Oth.Europe                 | 1                          | -          | -                             | -          | -                       | -          | -            | -          | -              | -          | -                            | -          | 1                         | -        | -           | -          | 1           | -          | 3           | -           | 3            |
| France                     | -                          | -          | -                             | -          | -                       | -          | -            | -          | -              | -          | -                            | -          | -                         | -        | 1           | -          | -           | -          | 1           | -           | 1            |
| Italy                      | -                          | -          | -                             | -          | -                       | -          | -            | -          | -              | -          | -                            | -          | -                         | -        | -           | -          | -           | -          | -           | -           | -            |
| China                      | 8                          | 2          | 19                            | 5          | -                       | 2          | 8            | 2          | -              | 2          | 2                            | -          | 2                         | -        | 5           | 3          | 16          | 4          | 60          | 20          | 80           |
| Oth.Country                | 1                          | -          | -                             | -          | -                       | -          | -            | -          | -              | -          | -                            | -          | -                         | -        | 1           | -          | 1           | -          | 3           | -           | 3            |
| <b>Total</b>               | <b>30</b>                  | <b>16</b>  | <b>43</b>                     | <b>11</b>  | <b>1</b>                | <b>2</b>   | <b>25</b>    | <b>2</b>   | <b>3</b>       | <b>7</b>   | <b>13</b>                    | <b>1</b>   | <b>40</b>                 | <b>-</b> | <b>75</b>   | <b>21</b>  | <b>61</b>   | <b>6</b>   | <b>291</b>  | <b>66</b>   | <b>357</b>   |
|                            | <b>Percentage</b>          |            |                               |            |                         |            |              |            |                |            |                              |            |                           |          |             |            |             |            |             |             |              |
| Australia                  | 6.1                        | 18.2       | 6.1                           | 3.0        | -                       | -          | 3.0          | -          | 6.1            | 9.1        | -                            | -          | -                         | -        | 18.2        | 21.2       | 3.0         | 6.1        | 42.4        | 57.6        | 100.0        |
| PNG                        | 25.0                       | 25.0       | 12.5                          | -          | -                       | -          | 12.5         | -          | -              | -          | -                            | -          | -                         | -        | 12.5        | 12.5       | -           | -          | 62.5        | 37.5        | 100.0        |
| US                         | -                          | 33.3       | -                             | -          | -                       | -          | -            | -          | -              | -          | -                            | -          | -                         | -        | 33.3        | 33.3       | -           | -          | 33.3        | 66.7        | 100.0        |
| NZ                         | 25.0                       | -          | -                             | 12.5       | -                       | -          | -            | -          | -              | -          | -                            | -          | 25.0                      | -        | 12.5        | 25.0       | -           | -          | 62.5        | 37.5        | 100.0        |
| UK                         | -                          | -          | -                             | -          | -                       | -          | -            | -          | -              | -          | -                            | -          | -                         | -        | -           | -          | 100.0       | -          | 100.0       | -           | 100.0        |
| Japan                      | 7.7                        | -          | 15.4                          | -          | 7.7                     | -          | -            | -          | -              | -          | -                            | -          | -                         | -        | 46.2        | 15.4       | 7.7         | -          | 84.6        | 15.4        | 100.0        |
| Germany                    | -                          | -          | -                             | 100.0      | -                       | -          | -            | -          | -              | -          | -                            | -          | -                         | -        | -           | -          | -           | -          | -           | 100.0       | 100.0        |
| Canada                     | 100.0                      | -          | -                             | -          | -                       | -          | -            | -          | -              | -          | -                            | -          | -                         | -        | -           | -          | -           | -          | 100.0       | -           | 100.0        |
| Oth.Pacific                | 12.5                       | -          | 12.5                          | -          | -                       | -          | -            | -          | 12.5           | 25.0       | -                            | -          | -                         | -        | 37.5        | -          | -           | -          | 75.0        | 25.0        | 100.0        |
| Vanuatu                    | 40.0                       | 40.0       | -                             | -          | -                       | -          | -            | -          | -              | -          | -                            | -          | -                         | -        | -           | 20.0       | -           | -          | 40.0        | 60.0        | 100.0        |
| Hong Kong                  | -                          | -          | 100.0                         | -          | -                       | -          | -            | -          | -              | -          | -                            | -          | -                         | -        | -           | -          | -           | -          | 100.0       | -           | 100.0        |
| Fiji                       | 25.0                       | 25.0       | 50.0                          | -          | -                       | -          | -            | -          | -              | -          | -                            | -          | -                         | -        | -           | -          | -           | -          | 75.0        | 25.0        | 100.0        |
| Oth.Asia                   | 4.3                        | 1.1        | 8.2                           | 1.6        | -                       | -          | 8.2          | -          | -              | -          | 6.0                          | 0.5        | 19.0                      | -        | 27.2        | 2.2        | 21.7        | -          | 94.6        | 5.4         | 100.0        |
| Netherlands                | -                          | -          | -                             | -          | -                       | -          | -            | -          | -              | -          | -                            | -          | -                         | -        | -           | -          | -           | -          | -           | -           | -            |
| Oth.Europe                 | 33.3                       | -          | -                             | -          | -                       | -          | -            | -          | -              | -          | -                            | -          | 33.3                      | -        | -           | -          | 33.3        | -          | 100.0       | -           | 100.0        |
| France                     | -                          | -          | -                             | -          | -                       | -          | -            | -          | -              | -          | -                            | -          | -                         | -        | 100.0       | -          | -           | -          | 100.0       | -           | 100.0        |
| Italy                      | -                          | -          | -                             | -          | -                       | -          | -            | -          | -              | -          | -                            | -          | -                         | -        | -           | -          | -           | -          | -           | -           | -            |
| China                      | 10.0                       | 2.5        | 23.8                          | 6.3        | -                       | 2.5        | 10.0         | 2.5        | -              | 2.5        | 2.5                          | -          | 2.5                       | -        | 6.3         | 3.8        | 20.0        | 5.0        | 75.0        | 25.0        | 100.0        |
| Oth.Country                | 33.3                       | -          | -                             | -          | -                       | -          | -            | -          | -              | -          | -                            | -          | -                         | -        | 33.3        | -          | 33.3        | -          | 100.0       | -           | 100.0        |
| <b>Total</b>               | <b>8.4</b>                 | <b>4.5</b> | <b>12.0</b>                   | <b>3.1</b> | <b>0.3</b>              | <b>0.6</b> | <b>7.0</b>   | <b>0.6</b> | <b>0.8</b>     | <b>2.0</b> | <b>3.6</b>                   | <b>0.3</b> | <b>11.2</b>               | <b>-</b> | <b>21.0</b> | <b>5.9</b> | <b>17.1</b> | <b>1.7</b> | <b>81.5</b> | <b>18.5</b> | <b>100.0</b> |

Table 10: Intending Resident Arrivals by Country of Residence by Age Groups by Sex: 2<sup>nd</sup> Quarter 2016

| Country of Usual Residence | Age-Group         |   |       |    |       |    |       |    |       |    |       |     |     |    |            |    | Total |     |     |
|----------------------------|-------------------|---|-------|----|-------|----|-------|----|-------|----|-------|-----|-----|----|------------|----|-------|-----|-----|
|                            | 0-14              |   | 15-24 |    | 25-34 |    | 35-44 |    | 45-54 |    | 55-64 |     | 65+ |    | Not Stated |    | M     | F   | All |
|                            | M                 | F | M     | F  | M     | F  | M     | F  | M     | F  | M     | F   | M   | F  | M          | F  | M     | F   | All |
| Australia                  | -                 | - | -     | -  | -     | 3  | 1     | 6  | 6     | 2  | 3     | 4   | -   | 2  | 4          | 2  | 14    | 19  | 33  |
| PNG                        | -                 | - | -     | 1  | 1     | 1  | 1     | 1  | 2     | -  | -     | -   | 1   | -  | -          | -  | 5     | 3   | 8   |
| US                         | -                 | - | -     | 1  | 1     | -  | -     | -  | -     | -  | -     | -   | -   | 1  | -          | -  | 1     | 2   | 3   |
| NZ                         | -                 | - | 1     | -  | -     | 1  | 1     | -  | -     | 1  | 1     | 1   | 1   | -  | 1          | -  | 5     | 3   | 8   |
| UK                         | -                 | - | -     | -  | -     | -  | -     | -  | -     | -  | -     | -   | -   | -  | 1          | -  | 1     | 0   | 1   |
| Japan                      | -                 | - | -     | -  | 1     | 1  | 3     | -  | 2     | -  | 3     | 1   | 2   | -  | -          | -  | 11    | 2   | 13  |
| Germany                    | -                 | - | -     | -  | -     | -  | -     | -  | -     | -  | -     | 1   | -   | -  | -          | -  | 0     | 1   | 1   |
| Canada                     | -                 | - | -     | -  | -     | -  | -     | -  | 1     | -  | -     | -   | -   | -  | -          | -  | 1     | 0   | 1   |
| Oth.Pacific                | -                 | - | 1     | -  | 1     | -  | 1     | 1  | 2     | 1  | -     | -   | -   | -  | 1          | -  | 6     | 2   | 8   |
| Vanuatu                    | -                 | - | 1     | -  | -     | 2  | -     | 1  | 1     | -  | -     | -   | -   | -  | -          | -  | 2     | 3   | 5   |
| Hong Kong                  | -                 | - | -     | -  | -     | -  | 1     | -  | -     | -  | -     | -   | -   | -  | -          | -  | 1     | 0   | 1   |
| Fiji                       | -                 | - | -     | -  | 1     | -  | 1     | -  | -     | -  | -     | -   | -   | -  | 1          | 1  | 3     | 1   | 4   |
| Oth.Asia                   | -                 | - | 9     | -  | 46    | 3  | 58    | 4  | 31    | 2  | 16    | 1   | 3   | -  | 11         | -  | 174   | 10  | 184 |
| Netherlands                | -                 | - | -     | -  | -     | -  | -     | -  | -     | -  | -     | -   | -   | -  | -          | -  | 0     | 0   | -   |
| Oth.Europe                 | -                 | - | -     | -  | 1     | -  | 1     | -  | -     | -  | 1     | -   | -   | -  | -          | -  | 3     | 0   | 3   |
| France                     | -                 | - | -     | -  | -     | -  | -     | -  | 1     | -  | -     | -   | -   | -  | -          | -  | 1     | 0   | 1   |
| Italy                      | -                 | - | -     | -  | -     | -  | -     | -  | -     | -  | -     | -   | -   | -  | -          | -  | 0     | 0   | -   |
| China                      | -                 | - | 12    | 5  | 15    | 8  | 11    | 2  | 13    | 2  | 2     | -   | -   | 1  | 7          | 2  | 60    | 20  | 80  |
| Oth.Country                | -                 | - | -     | -  | 3     | -  | -     | -  | -     | -  | -     | -   | -   | -  | -          | -  | 3     | 0   | 3   |
| Total                      | -                 | - | 24    | 7  | 70    | 19 | 79    | 15 | 59    | 8  | 26    | 8   | 7   | 4  | 26         | 5  | 291   | 66  | 357 |
|                            | <u>Percentage</u> |   |       |    |       |    |       |    |       |    |       |     |     |    |            |    |       |     |     |
| Australia                  | -                 | - | -     | -  | -     | 9  | 3     | 18 | 18    | 6  | 9     | 12  | -   | 6  | 12         | 6  | 42    | 58  | 100 |
| PNG                        | -                 | - | -     | 13 | 13    | 13 | 13    | 13 | 25    | -  | -     | -   | 13  | -  | -          | -  | 63    | 38  | 100 |
| US                         | -                 | - | -     | 33 | 33    | -  | -     | -  | -     | -  | -     | -   | -   | 33 | -          | -  | 33    | 67  | 100 |
| NZ                         | -                 | - | 13    | -  | -     | 13 | 13    | -  | -     | 13 | 13    | 13  | 13  | -  | 13         | -  | 63    | 38  | 100 |
| UK                         | -                 | - | -     | -  | -     | -  | -     | -  | -     | -  | -     | -   | -   | -  | 100        | -  | 100   | -   | 100 |
| Japan                      | -                 | - | -     | -  | 8     | 8  | 23    | -  | 15    | -  | 23    | 8   | 15  | -  | -          | -  | 85    | 15  | 100 |
| Germany                    | -                 | - | -     | -  | -     | -  | -     | -  | -     | -  | -     | 100 | -   | -  | -          | -  | -     | 100 | 100 |
| Canada                     | -                 | - | -     | -  | -     | -  | -     | -  | 100   | -  | -     | -   | -   | -  | -          | -  | 100   | -   | 100 |
| Oth.Pacific                | -                 | - | 13    | -  | 13    | -  | 13    | 13 | 25    | 13 | -     | -   | -   | -  | 13         | -  | 75    | 25  | 100 |
| Vanuatu                    | -                 | - | 20    | -  | -     | 40 | -     | 20 | 20    | -  | -     | -   | -   | -  | -          | -  | 40    | 60  | 100 |
| Hong Kong                  | -                 | - | -     | -  | -     | -  | 100   | -  | -     | -  | -     | -   | -   | -  | -          | -  | 100   | -   | 100 |
| Fiji                       | -                 | - | -     | -  | 25    | -  | 25    | -  | -     | -  | -     | -   | -   | -  | 25         | 25 | 75    | 25  | 100 |
| Oth.Asia                   | -                 | - | 5     | -  | 25    | 2  | 32    | 2  | 17    | 1  | 9     | 1   | 2   | -  | 6          | -  | 95    | 5   | 100 |
| Netherlands                | -                 | - | -     | -  | -     | -  | -     | -  | -     | -  | -     | -   | -   | -  | -          | -  | -     | -   | -   |
| Oth.Europe                 | -                 | - | -     | -  | 33    | -  | 33    | -  | -     | -  | 33    | -   | -   | -  | -          | -  | 100   | -   | 100 |
| France                     | -                 | - | -     | -  | -     | -  | -     | -  | 100   | -  | -     | -   | -   | -  | -          | -  | 100   | -   | 100 |
| Italy                      | -                 | - | -     | -  | -     | -  | -     | -  | -     | -  | -     | -   | -   | -  | -          | -  | -     | -   | -   |
| China                      | -                 | - | 15    | 6  | 19    | 10 | 14    | 3  | 16    | 3  | 3     | -   | -   | 1  | 9          | 3  | 75    | 25  | 100 |
| Oth.Country                | -                 | - | -     | -  | 100   | -  | -     | -  | -     | -  | -     | -   | -   | -  | -          | -  | 100   | -   | 100 |
| Total                      | -                 | - | 7     | 2  | 20    | 5  | 22    | 4  | 17    | 2  | 7     | 2   | 2   | 1  | 7          | 1  | 82    | 18  | 100 |



Table 11: Returning Resident Arrivals by Country of Residence by Age Groups by Sex: 2<sup>nd</sup> Quarter 2016

| Country of Usual Residence | Age-Group |      |       |      |       |      |       |      |       |      |       |      |      |      |            |      | Total |       |        |
|----------------------------|-----------|------|-------|------|-------|------|-------|------|-------|------|-------|------|------|------|------------|------|-------|-------|--------|
|                            | 0-14      |      | 15-24 |      | 25-34 |      | 35-44 |      | 45-54 |      | 55-64 |      | 65+  |      | Not Stated |      | M     | F     | All    |
|                            | M         | F    | M     | F    | M     | F    | M     | F    | M     | F    | M     | F    | M    | F    | M          | F    | M     | F     | All    |
| Australia                  | -         | -    | -     | -    | -     | -    | -     | -    | -     | -    | -     | -    | -    | -    | -          | -    | -     | -     | -      |
| PNG                        | -         | -    | -     | -    | -     | -    | -     | -    | -     | -    | -     | -    | -    | -    | -          | -    | -     | -     | -      |
| US                         | -         | -    | -     | -    | -     | -    | -     | -    | -     | -    | -     | -    | -    | -    | -          | -    | -     | -     | -      |
| NZ                         | -         | -    | -     | -    | -     | -    | -     | -    | -     | -    | -     | -    | -    | -    | -          | -    | -     | -     | -      |
| UK                         | -         | -    | -     | -    | -     | -    | -     | -    | -     | -    | -     | -    | -    | -    | -          | -    | -     | -     | -      |
| Japan                      | -         | -    | -     | -    | 4     | 3    | 2     | 1    | 1     | -    | 3     | 2    | 1    | -    | -          | 1    | 11    | 7     | 18     |
| Germany                    | -         | -    | -     | -    | -     | -    | -     | -    | -     | -    | -     | -    | -    | -    | -          | -    | -     | -     | -      |
| Canada                     | -         | -    | -     | -    | -     | -    | -     | -    | -     | -    | -     | -    | -    | -    | -          | -    | -     | -     | -      |
| Oth.Pacific                | -         | -    | -     | -    | -     | -    | -     | -    | -     | -    | -     | -    | -    | -    | -          | -    | -     | -     | -      |
| Vanuatu                    | -         | -    | -     | -    | -     | -    | -     | -    | -     | -    | -     | -    | -    | -    | -          | -    | -     | -     | -      |
| Hong Kong                  | -         | -    | -     | -    | -     | -    | -     | -    | -     | -    | -     | -    | -    | -    | -          | -    | -     | -     | -      |
| Fiji                       | -         | -    | -     | -    | -     | -    | -     | -    | -     | -    | -     | -    | -    | -    | -          | -    | -     | -     | -      |
| Oth.Asia                   | -         | -    | -     | -    | -     | -    | -     | -    | -     | -    | -     | -    | -    | -    | -          | -    | -     | -     | -      |
| Netherlands                | -         | -    | -     | -    | -     | -    | -     | -    | -     | -    | -     | -    | -    | -    | -          | -    | -     | -     | -      |
| Oth.Europe                 | -         | -    | -     | -    | -     | -    | -     | -    | -     | -    | -     | -    | -    | -    | -          | -    | -     | -     | -      |
| France                     | -         | -    | -     | -    | -     | -    | -     | -    | -     | -    | -     | -    | -    | -    | -          | -    | -     | -     | -      |
| Italy                      | -         | -    | -     | -    | -     | -    | -     | -    | -     | -    | -     | -    | -    | -    | -          | -    | -     | -     | -      |
| China                      | -         | -    | -     | -    | -     | -    | -     | -    | -     | -    | -     | -    | -    | -    | -          | -    | -     | -     | -      |
| Oth.Country                | -         | -    | -     | -    | -     | -    | -     | -    | -     | -    | -     | -    | -    | -    | -          | -    | -     | -     | -      |
| Solomon Is.                | 62        | 60   | 300   | 271  | 795   | 467  | 898   | 495  | 755   | 321  | 337   | 134  | 107  | 19   | 293        | 178  | 3,547 | 1,945 | 5,492  |
| Total                      | 62        | 60   | 300   | 271  | 799   | 470  | 900   | 496  | 756   | 321  | 340   | 136  | 108  | 19   | 293        | 179  | 3,558 | 1,952 | 5,510  |
| <u>Percentage</u>          |           |      |       |      |       |      |       |      |       |      |       |      |      |      |            |      |       |       |        |
| Australia                  | -         | -    | -     | -    | -     | -    | -     | -    | -     | -    | -     | -    | -    | -    | -          | -    | -     | -     | -      |
| PNG                        | -         | -    | -     | -    | -     | -    | -     | -    | -     | -    | -     | -    | -    | -    | -          | -    | -     | -     | -      |
| US                         | -         | -    | -     | -    | -     | -    | -     | -    | -     | -    | -     | -    | -    | -    | -          | -    | -     | -     | -      |
| NZ                         | -         | -    | -     | -    | -     | -    | -     | -    | -     | -    | -     | -    | -    | -    | -          | -    | -     | -     | -      |
| UK                         | -         | -    | -     | -    | -     | -    | -     | -    | -     | -    | -     | -    | -    | -    | -          | -    | -     | -     | -      |
| Japan                      | -         | -    | -     | -    | 22    | 17   | 11    | 6    | 6     | -    | 17    | 11   | 6    | -    | -          | 6    | 61    | 39    | 100    |
| Germany                    | -         | -    | -     | -    | -     | -    | -     | -    | -     | -    | -     | -    | -    | -    | -          | -    | -     | -     | -      |
| Canada                     | -         | -    | -     | -    | -     | -    | -     | -    | -     | -    | -     | -    | -    | -    | -          | -    | -     | -     | -      |
| Oth.Pacific                | -         | -    | -     | -    | -     | -    | -     | -    | -     | -    | -     | -    | -    | -    | -          | -    | -     | -     | -      |
| Vanuatu                    | -         | -    | -     | -    | -     | -    | -     | -    | -     | -    | -     | -    | -    | -    | -          | -    | -     | -     | -      |
| Hong Kong                  | -         | -    | -     | -    | -     | -    | -     | -    | -     | -    | -     | -    | -    | -    | -          | -    | -     | -     | -      |
| Fiji                       | -         | -    | -     | -    | -     | -    | -     | -    | -     | -    | -     | -    | -    | -    | -          | -    | -     | -     | -      |
| Oth.Asia                   | -         | -    | -     | -    | -     | -    | -     | -    | -     | -    | -     | -    | -    | -    | -          | -    | -     | -     | -      |
| Netherlands                | -         | -    | -     | -    | -     | -    | -     | -    | -     | -    | -     | -    | -    | -    | -          | -    | -     | -     | -      |
| Oth.Europe                 | -         | -    | -     | -    | -     | -    | -     | -    | -     | -    | -     | -    | -    | -    | -          | -    | -     | -     | -      |
| France                     | -         | -    | -     | -    | -     | -    | -     | -    | -     | -    | -     | -    | -    | -    | -          | -    | -     | -     | -      |
| Italy                      | -         | -    | -     | -    | -     | -    | -     | -    | -     | -    | -     | -    | -    | -    | -          | -    | -     | -     | -      |
| China                      | -         | -    | -     | -    | -     | -    | -     | -    | -     | -    | -     | -    | -    | -    | -          | -    | -     | -     | -      |
| Oth.Country                | -         | -    | -     | -    | -     | -    | -     | -    | -     | -    | -     | -    | -    | -    | -          | -    | -     | -     | -      |
| Solomon Is.                | 1.13      | 1.09 | 5.46  | 4.93 | 14.48 | 8.50 | 16.35 | 9.01 | 13.75 | 5.84 | 6.14  | 2.44 | 1.95 | 0.35 | 5.34       | 3.24 | 64.58 | 35.42 | 100.00 |
| Total                      | 1.13      | 1.09 | 5.44  | 4.92 | 14.50 | 8.53 | 16.33 | 9.00 | 13.72 | 5.83 | 6.17  | 2.47 | 1.96 | 0.34 | 5.32       | 3.25 | 64.57 | 35.43 | 100.00 |

Table 12: Returning Resident Arrivals by Country of Residence by Occupation and Sex: 2<sup>nd</sup> Quarter 2016

| Country of Usual Residence | Professional and Technical |       | Administration and Managerial |      | Clerical & Related Work |     | Sales Worker |     | Service Worker |       | Agriculture Forestry Fishery |     | Production & Related Work |     | Other |      | No Work |     | Total |       |        |
|----------------------------|----------------------------|-------|-------------------------------|------|-------------------------|-----|--------------|-----|----------------|-------|------------------------------|-----|---------------------------|-----|-------|------|---------|-----|-------|-------|--------|
|                            | M                          | F     | M                             | F    | M                       | F   | M            | F   | M              | F     | M                            | F   | M                         | F   | M     | F    | M       | F   | M     | F     | All    |
| Australia                  | -                          | -     | -                             | -    | -                       | -   | -            | -   | -              | -     | -                            | -   | -                         | -   | -     | -    | -       | -   | -     | -     | -      |
| PNG                        | -                          | -     | -                             | -    | -                       | -   | -            | -   | -              | -     | -                            | -   | -                         | -   | -     | -    | -       | -   | -     | -     | -      |
| US                         | -                          | -     | -                             | -    | -                       | -   | -            | -   | -              | -     | -                            | -   | -                         | -   | -     | -    | -       | -   | -     | -     | -      |
| NZ                         | -                          | -     | -                             | -    | -                       | -   | -            | -   | -              | -     | -                            | -   | -                         | -   | -     | -    | -       | -   | -     | -     | -      |
| UK                         | -                          | -     | -                             | -    | -                       | -   | -            | -   | -              | -     | -                            | -   | -                         | -   | -     | -    | -       | -   | -     | -     | -      |
| Japan                      | 4                          | 2     | 1                             | 1    | 1                       | -   | -            | -   | -              | 3     | -                            | -   | -                         | -   | 5     | 1    | -       | -   | 11    | 7     | 18     |
| Germany                    | -                          | -     | -                             | -    | -                       | -   | -            | -   | -              | -     | -                            | -   | -                         | -   | -     | -    | -       | -   | -     | -     | -      |
| Canada                     | -                          | -     | -                             | -    | -                       | -   | -            | -   | -              | -     | -                            | -   | -                         | -   | -     | -    | -       | -   | -     | -     | -      |
| Oth.Pacific                | -                          | -     | -                             | -    | -                       | -   | -            | -   | -              | -     | -                            | -   | -                         | -   | -     | -    | -       | -   | -     | -     | -      |
| Vanuatu                    | -                          | -     | -                             | -    | -                       | -   | -            | -   | -              | -     | -                            | -   | -                         | -   | -     | -    | -       | -   | -     | -     | -      |
| Hong Kong                  | -                          | -     | -                             | -    | -                       | -   | -            | -   | -              | -     | -                            | -   | -                         | -   | -     | -    | -       | -   | -     | -     | -      |
| Fiji                       | -                          | -     | -                             | -    | -                       | -   | -            | -   | -              | -     | -                            | -   | -                         | -   | -     | -    | -       | -   | -     | -     | -      |
| Oth.Asia                   | -                          | -     | -                             | -    | -                       | -   | -            | -   | -              | -     | -                            | -   | -                         | -   | -     | -    | -       | -   | -     | -     | -      |
| Netherlands                | -                          | -     | -                             | -    | -                       | -   | -            | -   | -              | -     | -                            | -   | -                         | -   | -     | -    | -       | -   | -     | -     | -      |
| Oth.Europe                 | -                          | -     | -                             | -    | -                       | -   | -            | -   | -              | -     | -                            | -   | -                         | -   | -     | -    | -       | -   | -     | -     | -      |
| France                     | -                          | -     | -                             | -    | -                       | -   | -            | -   | -              | -     | -                            | -   | -                         | -   | -     | -    | -       | -   | -     | -     | -      |
| Italy                      | -                          | -     | -                             | -    | -                       | -   | -            | -   | -              | -     | -                            | -   | -                         | -   | -     | -    | -       | -   | -     | -     | -      |
| China                      | -                          | -     | -                             | -    | -                       | -   | -            | -   | -              | -     | -                            | -   | -                         | -   | -     | -    | -       | -   | -     | -     | -      |
| Oth.Country                | -                          | -     | -                             | -    | -                       | -   | -            | -   | -              | -     | -                            | -   | -                         | -   | -     | -    | -       | -   | -     | -     | -      |
| Solomon Is.                | 1,049                      | 624   | 377                           | 153  | 49                      | 38  | 57           | 12  | 88             | 210   | 84                           | 22  | 112                       | 3   | 1,463 | 693  | 268     | 190 | 3,547 | 1,945 | 5,492  |
| Total                      | 1,053                      | 626   | 378                           | 154  | 50                      | 38  | 57           | 12  | 88             | 213   | 84                           | 22  | 112                       | 3   | 1,468 | 694  | 268     | 190 | 3,558 | 1,952 | 5,510  |
| Percentage                 |                            |       |                               |      |                         |     |              |     |                |       |                              |     |                           |     |       |      |         |     |       |       |        |
| Australia                  | -                          | -     | -                             | -    | -                       | -   | -            | -   | -              | -     | -                            | -   | -                         | -   | -     | -    | -       | -   | -     | -     | -      |
| PNG                        | -                          | -     | -                             | -    | -                       | -   | -            | -   | -              | -     | -                            | -   | -                         | -   | -     | -    | -       | -   | -     | -     | -      |
| US                         | -                          | -     | -                             | -    | -                       | -   | -            | -   | -              | -     | -                            | -   | -                         | -   | -     | -    | -       | -   | -     | -     | -      |
| NZ                         | -                          | -     | -                             | -    | -                       | -   | -            | -   | -              | -     | -                            | -   | -                         | -   | -     | -    | -       | -   | -     | -     | -      |
| UK                         | -                          | -     | -                             | -    | -                       | -   | -            | -   | -              | -     | -                            | -   | -                         | -   | -     | -    | -       | -   | -     | -     | -      |
| Japan                      | 22.22                      | 11.11 | 5.56                          | 5.56 | 5.56                    | -   | -            | -   | -              | 16.67 | -                            | -   | -                         | -   | 27.78 | 5.56 | -       | -   | 61.11 | 38.89 | 100.00 |
| Germany                    | -                          | -     | -                             | -    | -                       | -   | -            | -   | -              | -     | -                            | -   | -                         | -   | -     | -    | -       | -   | -     | -     | -      |
| Canada                     | -                          | -     | -                             | -    | -                       | -   | -            | -   | -              | -     | -                            | -   | -                         | -   | -     | -    | -       | -   | -     | -     | -      |
| Oth.Pacific                | -                          | -     | -                             | -    | -                       | -   | -            | -   | -              | -     | -                            | -   | -                         | -   | -     | -    | -       | -   | -     | -     | -      |
| Vanuatu                    | -                          | -     | -                             | -    | -                       | -   | -            | -   | -              | -     | -                            | -   | -                         | -   | -     | -    | -       | -   | -     | -     | -      |
| Hong Kong                  | -                          | -     | -                             | -    | -                       | -   | -            | -   | -              | -     | -                            | -   | -                         | -   | -     | -    | -       | -   | -     | -     | -      |
| Fiji                       | -                          | -     | -                             | -    | -                       | -   | -            | -   | -              | -     | -                            | -   | -                         | -   | -     | -    | -       | -   | -     | -     | -      |
| Oth.Asia                   | -                          | -     | -                             | -    | -                       | -   | -            | -   | -              | -     | -                            | -   | -                         | -   | -     | -    | -       | -   | -     | -     | -      |
| Netherlands                | -                          | -     | -                             | -    | -                       | -   | -            | -   | -              | -     | -                            | -   | -                         | -   | -     | -    | -       | -   | -     | -     | -      |
| Oth.Europe                 | -                          | -     | -                             | -    | -                       | -   | -            | -   | -              | -     | -                            | -   | -                         | -   | -     | -    | -       | -   | -     | -     | -      |
| France                     | -                          | -     | -                             | -    | -                       | -   | -            | -   | -              | -     | -                            | -   | -                         | -   | -     | -    | -       | -   | -     | -     | -      |
| Italy                      | -                          | -     | -                             | -    | -                       | -   | -            | -   | -              | -     | -                            | -   | -                         | -   | -     | -    | -       | -   | -     | -     | -      |
| China                      | -                          | -     | -                             | -    | -                       | -   | -            | -   | -              | -     | -                            | -   | -                         | -   | -     | -    | -       | -   | -     | -     | -      |
| Oth.Country                | -                          | -     | -                             | -    | -                       | -   | -            | -   | -              | -     | -                            | -   | -                         | -   | -     | -    | -       | -   | -     | -     | -      |
| Solomon Is.                | 19.1                       | 11.4  | 6.9                           | 2.8  | 0.9                     | 0.7 | 1.0          | 0.2 | 1.6            | 3.8   | 1.5                          | 0.4 | 2.0                       | 0.1 | 26.6  | 12.6 | 4.9     | 3.5 | 64.6  | 35.4  | 100.0  |
| Total                      | 19.1                       | 11.4  | 6.9                           | 2.8  | 0.9                     | 0.7 | 1.0          | 0.2 | 1.6            | 3.9   | 1.5                          | 0.4 | 2.0                       | 0.1 | 26.6  | 12.6 | 4.9     | 3.4 | 64.6  | 35.4  | 100.0  |