



Solomon Islands Government

Statistical Bulletin: No: 10/2011

## **VISITOR STATISTICS**

(Fourth Quarter 2010)

Solomon Islands Statistics Office

Ministry of Finance

Honiara

## TABLE OF CONTENTS

Introduction .....	3
COMMENTARY OF RESULTS .....	5
<i>International Arrivals</i> .....	5
<i>Arrivals by Country of Residence</i> .....	5
<i>Visitor by Month</i> .....	5
<i>Tourists</i> .....	5
<i>Visitors by Purpose of Visit</i> .....	5
<i>Visitor by Age Group</i> .....	5
<i>Visitor by Occupation:</i> .....	5
<i>Visitor by Carrier</i> .....	5

### **Charts**

---

Chart 1: Arrivals by Category 4th Quarter 2010.....	6
Chart 2: Visitor Arrivals by Country of Residence by quarter 2010.....	7
Chart 3: Visitor Arrivals by Month, 2009 to 4th Quarter 2010 .....	8
Chart 4: Tourist Arrivals by Country of Residence 4th Quarter 2010.....	9
Chart 5: Visitor Arrivals by Country of Residence by Purpose of Visit 4th Quarter 2010.....	10
Chart 6: Visitor Arrivals by Age group category by sex, 4 <sup>th</sup> quarter 2010.....	11
Chart 7: Visitor Arrivals by Occupation by sex, 4 <sup>th</sup> quarter 2010.....	12
Chart 8: Visitor Arrivals by Carrier by sex, 4 <sup>th</sup> quarter 2010.....	13

### **Tables**

Table 1: Total Arrivals Classified by Purpose of Travel by Sex by Year by Quarter 4th Quarter 2010.....	6
Table 2: Visitors Arrivals by Country of Residence by Year by Month: 4th Quarter 2010.....	7
Table 3: Visitors Arrivals by Month 2006 to 4th Quarter 2010.....	8
Table 4: Visitors Classified as Tourists by Country of Residence by Year, Quarter and Average Length..... of Stay 2008 to 4th Quarter 2010.....	9
Table 5: Visitor Arrivals by Country of Residence by Purpose of Visit by sex: 4th Quarter 2010.....	10
Table 6: Visitors Arrivals by Country of Residence by Age Groups by sex: 4th Quarter 2010.....	11
Table 7: Visitors Arrivals by Country of Residence by Occupation and Sex: 4th Quarter 2010 .....	12
Table 8: Visitors Arrivals by Country of Residence by Carrier By Sex: 4th Quarter 2010.....	13
Appendix 1 .....	14
<i>Concepts and Definitions</i> .....	14
Appendix 2 .....	15
Table 9: Intending Resident Arrivals by Country of residence by Occupation and sex: 4th Quarter 2010 .....	15
Table 10: Intending Resident Arrivals by country of Residence by Age Groups by Sex: 4th Quarter 2010 .....	16
Table 11: Returning Resident Arrivals by country of Residence by Occupation and sex: 4th Quarter 2010 .....	17
Table 12: Returning Resident Arrivals by country of Residence by Age Groups and sex: 4th Quarter 2010 .....	18

## Introduction

This quarterly bulletin is produced by the National Statistics Office NSO in the Ministry of Finance and Treasury. It provides information on international arrivals comprised of the returning resident, intending resident, and visitor. The explanations of these categories are provided in Appendix 1 of the bulletin.

Visitor category comprised the bigger share of the bulletin, (portrayed in tables 1 to 8); compared to the returning and intending resident category portrayed in Tables 1, and 9 to 12. The bulletin includes twelve tables and eight charts stretched over cross-field tabulation, preferably to meet information need of local, regional, and international researchers.

The information captured through a self fill Disembarkation form that was completed by all disembarking passengers. The forms were collected by Immigration officials at international check-in counters on arrival. The coverage of the bulletin is complete.

Sheer acknowledgement is owed to the Immigration Department for their continuous support of this bulletin, by providing an office space and permitting the statistics office to input completed forms. With the official arrangement in-placed between the Statistics and Immigration departments this bulletin is possible.

The inclusion of four new tables 9 to 12 in Appendix 2 of the bulletin anticipates to complete the distribution portrait of Intending and Returning resident. The distribution is by age groups, occupation and by country of usual residence.

Data limitations, highlighted in the previous bulletin still remain, though some have substantially improved but noted again for ease of reference as follows:-

- Data entry duplication by the Immigration and Statistics departments was a long standing issue. Discussion of the issues had been made by the two departments, though resolution has been recognized, this was yet to be put in place.
- Timeliness of visitor statistics has improved but the bulletin may be delayed by the production process.
- The information contained in the bulletin is based on information captured from the data source by the SINSO.
- The monetary value of the industry is not available and thus not possible in this bulletin. The concepts and definitions of the arrival categories were included in Appendix 1. The symbols that are likely to be used are:
  - zero if representing a value
  - negative change if representing a percentage change
  - + positive change if representing a percentage change
  - p preliminary figure, subject to revision
  - r revised
  - e estimate
  - n/a not available

For more information contact the Statistics Office, Department of Finance and Treasury:

TELEPHONE : (677) 27835

FACSMILE : (677) 23775

E-MAIL : STATS-management@mof.gov.sb

: STATS-SocialDemography@mof.gov.sb

WEBSITE : **<http://www.spc.int/prism/country/sb/stats>**

Contact persons: 1. Mrs. Irene KALAUMA, Principal Statistician

2. Mrs. Anterlyn TUZAKANA, Senior Statistician

## **COMMENTARY OF RESULTS**

### **International Arrival**

Fourth quarter arrivals of 10,777 persons recorded the highest in 2010. Arrivals classified by the category for the fourth quarter of 2010 showed that returning resident comprise of 40% while intending resident 11% and visitor 49%.

Visitor arrivals for fourth quarter of 5,295 represent a fall of 15% compared to the third quarter figure of 6,262. Table 1 showed, visitor and returning resident categories comprised the larger proportion of all arrivals while the intending resident represents the lesser share during the quarter. Chart 1, gives a clear picture of all the categories.

### **Arrivals by Country of Residence**

Arrivals by country of residence for fourth quarter showed that Australians (52%) are frequent travellers to Solomon Islands followed by Papua New Guinea (8.8%), New Zealand (8.5%), Other Asia (6%), USA (4.5%) and Fiji (4%).

### **Visitor by Month**

Visitors by monthly arrivals for fourth quarter revealed that December has the highest number of arrivals of 1,858 persons. This was followed by the month of October which recorded a total of 1,813 persons and November the least with 1,624 persons.

### **Tourists**

Tourist<sup>1</sup> arrivals for the fourth quarter of the year totalled to 1,496 persons and they spent an average of 18 days in the country. The highest number of tourists recorded for the quarter comes from Australia (57%) and staying in the country for an average of 15 days. This was followed by USA (7.6%), and Other Asia (7%).

### **Visitor by Purpose of Visit**

Distribution of visitors by purpose of visit confirmed Business & conference (36.8%) as most popular during the quarter. This was followed by Holiday & vacation (28%), Other (19%), Visit friends & relatives (14%) and Transit & stopover the least by 1.7%.

### **Visitor by Age Group**

Visitor Arrivals by broad age groups show that 78% of arrivals were in the 25years to 64years age range. The younger and the older age brackets represent 18% while the remaining 4% represents arrivals who did not state their age.

Male represent 71% of the arrival and female 29%. (Refer to Chart 6)

### **Visitor by Occupation**

Visitor by occupational category revealed that Professional/technical (30.9%) was the main occupation during the quarter. This is followed by Other (30.5%), Administration and managerial (10.6%), Service worker (8.2%). Table 7 further revealed that Australia not only dominated the Arrivals in terms of markets but also dominated all the categories of occupations during the quarter. Refer to Table 7 for further analysis.

### **Visitor by Carrier**

The most popular carriers during the quarter were Solomon Airlines (39%) and Pacific Blue (32%). These were followed by Air Niugini (16%) and Air Pacific (6.8%).

---

<sup>1</sup> Refer to Appendix 1 for the definition

Table 1: Total Arrivals Classified by Purpose of Travel by Sex, by Year by Quarter: 4<sup>th</sup> Quarter 2010

Year / Quarter	Returning Resident						Intending Resident				Visitor			Total		
	Solomon Islander			Non-Solomon Islander			All	M	F	T	M	F	T	M	F	All
	M	F	T	M	F	T										
2006 1 <sup>st</sup>	1,317	704	2,021	503	148	651	2,672	395	94	489	2,065	697	2,762	4,280	1,643	5,923
2 <sup>nd</sup>	1,312	665	1,977	103	43	146	2,123	602	188	790	2,285	856	3,141	4,302	1,752	6,054
3 <sup>rd</sup>	1,094	557	1,651	58	8	66	1,717	481	114	595	1,705	733	2,438	3,338	1,412	4,750
4 <sup>th</sup>	2,699	1,255	3,954	2	2	4	3,958	659	165	824	2,234	907	3,141	5,594	2,329	7,923
2007 1 <sup>st</sup>	1,528	901	2,429	5	-	5	2,434	740	206	946	2,144	673	2,817	4,417	1,780	6,197
2 <sup>nd</sup>	1,798	913	2,711	102	31	133	2,844	696	195	891	2,817	1,037	3,854	5,413	2,176	7,589
3 <sup>rd</sup>	1,826	929	2,755	59	12	71	2,826	487	172	659	2,195	1,225	3,420	4,567	2,338	6,905
4 <sup>th</sup>	2,107	1,095	3,202	486	235	721	3,923	589	153	742	2,525	1,132	3,657	5,707	2,615	8,322
2008 1 <sup>st</sup>	1,537	938	2,475	4	2	6	2,481	537	174	711	2,094	879	2,973	4,172	1,993	6,165
2 <sup>nd</sup>	2,492	1,268	3,760	3	1	4	3,764	312	87	399	2,857	1,344	4,201	5,664	2,700	8,364
3 <sup>rd</sup>	1,593	952	2,545	761	437	1,198	3,743	605	155	760	3,138	1,480	4,618	6,097	3,024	9,121
4 <sup>th</sup>	2,507	1,366	3,873	969	453	1,422	5,295	396	125	521	3,063	1,409	4,472	6,935	3,353	10,288
2009 1 <sup>st</sup>	1,173	760	1,933	677	436	1,113	3,046	659	315	974	3,015	1,258	4,273	5,524	2,769	8,293
2 <sup>nd</sup>	1,427	728	2,155	471	238	709	2,864	611	244	855	3,242	1,374	4,616	5,751	2,584	8,335
3 <sup>rd</sup>	1,182	709	1,891	425	220	645	2,536	786	355	1,141	3,263	1,519	4,782	5,656	2,803	8,459
4 <sup>th</sup>	2,145	1,152	3,297	393	197	590	3,887	722	282	1,004	3,177	1,412	4,589	6,437	3,043	9,480
2010 1 <sup>st</sup>	1,045	695	1,740	550	342	892	2,632	808	380	1,188	3,115	1,095	4,210	5,518	2,512	8,030
2 <sup>nd</sup>	1,337	707	2,044	494	272	766	2,810	808	307	1,115	3,370	1,384	4,754	6,009	2,670	8,679
3 <sup>rd</sup>	1,421	730	2,151	485	274	759	2,910	835	316	1,151	4,494	1,768	6,262	7,235	3,088	10,323
4 <sup>th</sup>	2,783	1,550	4,333	13	4	17	4,350	848	284	1,132	3,766	1,529	5,295	7,410	3,367	10,777
Percentage change																
08 <sup>4th</sup> -09 <sup>1st</sup>	-53.2	-44.4	-50.1	-30.1	-3.8	-21.7	-42.5	66.4	152.0	86.9	-1.6	-10.7	-4.4	-20.3	-17.4	-19.4
09 <sup>1st</sup> -09 <sup>2nd</sup>	21.7	-4.2	11.5	-30.4	-45.4	-36.3	-6.0	-7.3	-22.5	-12.2	7.5	9.2	8.0	4.1	-6.7	0.5
08 <sup>2nd</sup> -09 <sup>2nd</sup>	-42.7	-42.6	-42.7	15600.0	23700.0	17625.0	-23.9	95.8	180.5	114.3	13.5	2.2	9.9	1.5	-4.3	-0.3
09 <sup>2nd</sup> -09 <sup>3rd</sup>	-17.2	-2.6	-12.3	-9.8	-7.6	-9.0	-11.5	28.6	45.5	33.5	0.6	10.6	3.6	-1.7	8.5	1.5
08 <sup>3rd</sup> -09 <sup>3rd</sup>	-25.8	-25.5	-25.7	-44.2	-49.7	-46.2	-32.2	29.9	129.0	50.1	4.0	2.6	3.6	-7.2	-7.3	-7.3
09 <sup>3rd</sup> -09 <sup>4th</sup>	81.5	62.5	74.4	-7.5	-10.5	-8.5	53.3	-8.1	-20.6	-12.0	-2.6	-7.0	-4.0	13.8	8.6	12.1
08 <sup>4th</sup> -09 <sup>4th</sup>	-14.4	-15.7	-14.9	-59.4	-56.5	-58.5	-26.6	82.3	125.6	92.7	3.7	0.2	2.6	-7.2	-9.2	-7.9
09 <sup>4th</sup> -10 <sup>1st</sup>	-51.3	-39.7	-47.2	39.9	73.6	51.2	-32.3	11.9	34.8	18.3	-2.0	-22.5	-8.3	-14.3	-17.4	-15.3
09 <sup>1st</sup> -10 <sup>1st</sup>	-10.9	-8.6	-10.0	-18.8	-21.6	-19.9	-13.6	22.6	20.6	22.0	3.3	-13.0	-1.5	-0.1	-9.3	-3.2
10 <sup>1st</sup> -10 <sup>2nd</sup>	27.9	1.7	17.5	-10.2	-20.5	-14.1	6.8	0.0	-19.2	-6.1	8.2	26.4	12.9	8.9	6.3	8.1
09 <sup>2nd</sup> -10 <sup>2nd</sup>	-6.3	-2.9	-5.2	4.9	14.3	8.0	-1.9	32.2	25.8	30.4	3.9	0.7	3.0	4.5	3.3	4.1
10 <sup>2nd</sup> -10 <sup>3rd</sup>	6.3	3.3	5.2	-1.8	0.7	-0.9	3.6	3.3	2.9	3.2	33.4	27.7	31.7	20.4	15.7	18.9
09 <sup>3rd</sup> -10 <sup>3rd</sup>	20.2	3.0	13.7	14.1	24.5	17.7	14.7	6.2	-11.0	0.9	37.7	16.4	30.9	27.9	10.2	22.0
09 <sup>4th</sup> -10 <sup>4th</sup>	29.7	34.5	31.4	-96.7	-98.0	-97.1	11.9	17.5	0.7	12.7	18.5	8.3	15.4	15.1	10.6	13.7
10 <sup>3rd</sup> -10 <sup>4th</sup>	95.8	112.3	101.4	-97.3	-98.5	-97.8	49.5	1.6	-10.1	-1.7	-16.2	-13.5	-15.4	2.4	9.0	4.4

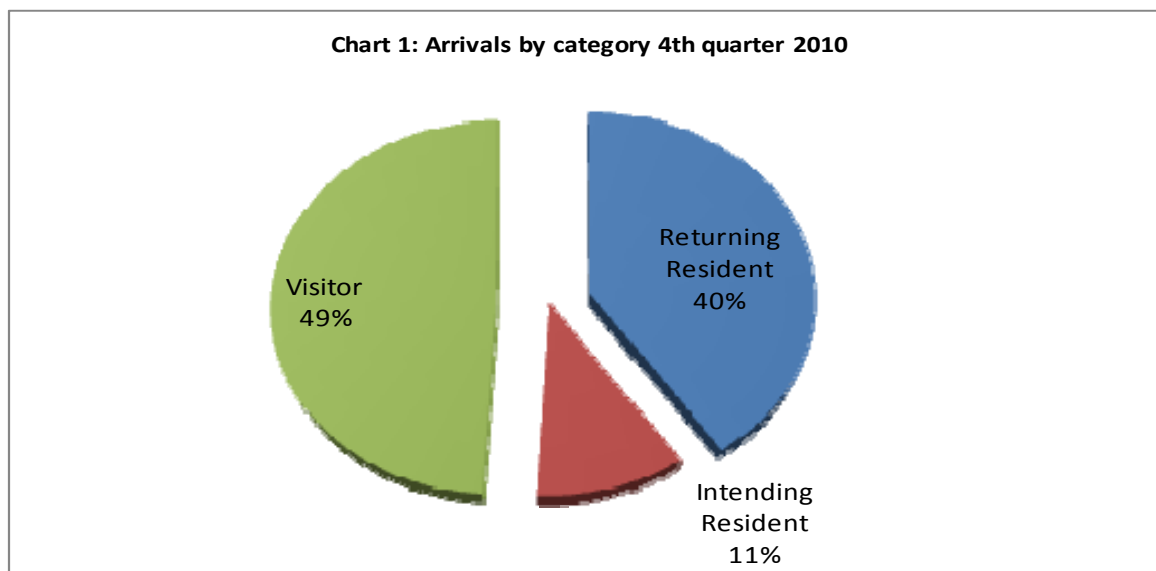


Table 2: Visitor Arrivals by Country of Residence by year by month: 4<sup>th</sup> Quarter 2010

Country of Usual Residence	2007					2008					2009					2010				
	Q1	Q2	Q3	Q4	Total	Q1	Q2	Q3	Q4	Total	Q1	Q2	Q3	Q4	Total	Q1	Q2	Q3	Q4	Total
Australia	1,190	1,747	1,449	1,574	5,960	1,291	1,971	2,184	1,967	7,413	1,952	2,361	2,354	2,235	8,902	2,087	2,544	3,362	2,758	10,751
PNG	205	261	208	333	1,007	181	243	234	248	906	254	260	228	356	1,098	305	248	339	469	1,361
US	105	282	291	275	953	198	279	336	292	1,105	177	263	345	249	1,034	127	236	287	212	862
NZ	181	295	297	214	987	166	256	318	357	1,097	363	324	379	298	1,364	274	335	647	454	1,710
UK	70	89	106	53	318	62	94	137	164	457	112	111	121	75	419	82	108	141	101	432
Japan	125	140	164	143	572	144	92	172	181	589	192	142	159	380	873	166	95	151	177	589
Germany	21	35	13	18	87	19	14	38	53	124	37	15	25	23	100	24	33	26	18	101
Canada	9	33	22	31	95	19	24	29	43	115	23	20	21	24	88	32	22	25	34	113
Oth.Pacific	148	162	120	163	593	165	417	242	332	1,156	312	213	281	144	950	167	125	123	170	585
Vanuatu	70	130	135	189	524	120	119	137	142	518	86	72	65	85	308	48	86	126	145	405
Hong Kong	2	6	3	-	11	34	6	15	2	57	3	9	5	-	17	10	-	23	5	38
Fiji	198	224	105	183	710	161	203	239	184	787	225	257	247	188	917	206	278	273	234	991
Other Asia	403	313	239	309	1,264	303	356	296	294	1,249	319	447	326	317	1,409	503	477	509	336	1,825
Netherlands	4	9	97	15	125	6	5	7	19	37	14	12	10	15	51	11	9	16	17	53
Oth.Europe	32	57	121	74	284	74	79	128	105	386	126	57	100	91	374	78	63	100	66	307
France	9	11	13	15	48	10	20	36	25	91	19	6	29	27	81	12	24	24	22	82
Italy	8	7	19	29	63	4	5	17	11	37	13	4	22	27	66	4	3	13	19	39
Oth.Country	37	53	18	39	147	16	18	53	53	140	46	43	65	55	209	74	68	77	58	277
<b>Total</b>	<b>2,817</b>	<b>3,854</b>	<b>3,420</b>	<b>3,657</b>	<b>13,748</b>	<b>2,973</b>	<b>4,201</b>	<b>4,618</b>	<b>4,472</b>	<b>16,264</b>	<b>4,273</b>	<b>4,616</b>	<b>4,782</b>	<b>4,589</b>	<b>18,260</b>	<b>4,210</b>	<b>4,754</b>	<b>6,262</b>	<b>5,295</b>	<b>20,521</b>
Percentage																				
Australia	42.2	45.3	42.4	43.0	43.4	43.4	46.9	47.3	44.0	45.6	45.7	51.1	49.2	48.7	48.8	49.6	53.5	53.7	52.1	52.4
PNG	7.3	6.8	6.1	9.1	7.3	6.1	5.8	5.1	5.5	5.6	5.9	5.6	4.8	7.8	6.0	7.2	5.2	5.4	8.9	6.6
US	3.7	7.3	8.5	7.5	6.9	6.7	6.6	7.3	6.5	6.8	4.1	5.7	7.2	5.4	5.7	3.0	5.0	4.6	4.0	4.2
NZ	6.4	7.7	8.7	5.9	7.2	5.6	6.1	6.9	8.0	6.7	8.5	7.0	7.9	6.5	7.5	6.5	7.0	10.3	8.6	8.3
UK	2.5	2.3	3.1	1.4	2.3	2.1	2.2	3.0	3.7	2.8	2.6	2.4	2.5	1.6	2.3	1.9	2.3	2.3	1.9	2.1
Japan	4.4	3.6	4.8	3.9	4.2	4.8	2.2	3.7	4.0	3.6	4.5	3.1	3.3	8.3	4.8	3.9	2.0	2.4	3.3	2.9
Germany	0.7	0.9	0.4	0.5	0.6	0.6	0.3	0.8	1.2	0.8	0.9	0.3	0.5	0.5	0.5	0.6	0.7	0.4	0.3	0.5
Canada	0.3	0.9	0.6	0.8	0.7	0.6	0.6	0.6	1.0	0.7	0.5	0.4	0.4	0.5	0.5	0.8	0.5	0.4	0.6	0.6
Oth.Pacific	5.3	4.2	3.5	4.5	4.3	5.5	9.9	5.2	7.4	7.1	7.3	4.6	5.9	3.1	5.2	4.0	2.6	2.0	3.2	2.9
Vanuatu	2.5	3.4	3.9	5.2	3.8	4.0	2.8	3.0	3.2	3.2	2.0	1.6	1.4	1.9	1.7	1.1	1.8	2.0	2.7	2.0
Hong Kong	0.1	0.2	0.1	-	0.1	1.1	0.1	0.3	0.0	0.4	0.1	0.2	0.1	0.0	0.1	0.2	-	0.4	0.1	0.2
Fiji	7.0	5.8	3.1	5.0	5.2	5.4	4.8	5.2	4.1	4.8	5.3	5.6	5.2	4.1	5.0	4.9	5.8	4.4	4.4	4.8
Oth.Asia	14.3	8.1	7.0	8.4	9.2	10.2	8.5	6.4	6.6	7.7	7.5	9.7	6.8	6.9	7.7	11.9	10.0	8.1	6.3	8.9
Netherlands	0.1	0.2	2.8	0.4	0.9	0.2	0.1	0.2	0.4	0.2	0.3	0.3	0.2	0.3	0.3	0.3	0.2	0.3	0.3	0.3
Oth.Europe	1.1	1.5	3.5	2.0	2.1	2.5	1.9	2.8	2.3	2.4	2.9	1.2	2.1	2.0	2.0	1.9	1.3	1.6	1.2	1.5
France	0.3	0.3	0.4	0.4	0.3	0.3	0.5	0.8	0.6	0.6	0.4	0.1	0.6	0.6	0.4	0.3	0.5	0.4	0.4	0.4
Italy	0.3	0.2	0.6	0.8	0.5	0.1	0.1	0.4	0.2	0.2	0.3	0.1	0.5	0.6	0.4	0.1	0.1	0.2	0.4	0.2
Oth.Country	1.3	1.4	0.5	1.1	1.1	0.5	0.4	1.1	1.2	0.9	1.1	0.9	1.4	1.2	1.1	1.8	1.4	1.2	1.1	1.3
<b>Total</b>	<b>100</b>	<b>100</b>	<b>100</b>	<b>100</b>	<b>100</b>	<b>100</b>	<b>100</b>	<b>100</b>	<b>100</b>	<b>100</b>	<b>100</b>	<b>100</b>	<b>100</b>	<b>100</b>	<b>100</b>	<b>100</b>	<b>100</b>	<b>100</b>	<b>100.0</b>	<b>100.0</b>

Chart 2: Visitor Arrivals by country of residence by quarter, 2010

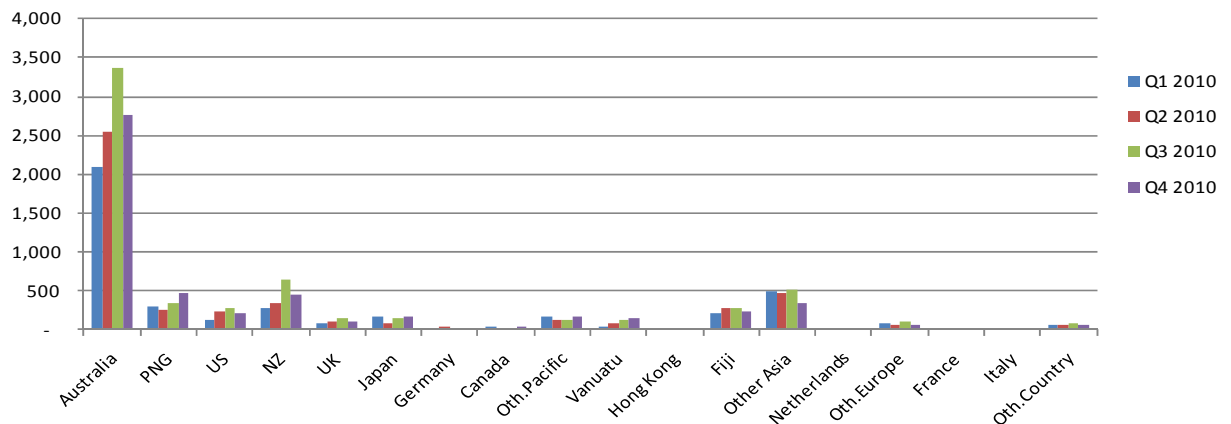


Table 3: Visitors Arrival by Month: 2006 – 2010: 4<sup>th</sup> Quarter 2010

Month	2006	2007	2008	2009	2010
January	952	546	889	1,602	1,235
February	838	1,020	1,282	1,422	1,209
March	972	1,251	802	1,249	1,766
April	994	1,452	1,388	1,499	1,820
May	858	1,137	1,261	1,393	1,137
June	1,289	1,265	1,552	1,724	1,797
July	865	822	1,692	1,603	2,264
August	892	1,299	1,469	1,520	1,845
September	681	1,299	1,457	1,659	2,153
October	942	1,260	1,399	1,709	1,813
November	1,118	1,246	1,545	1,475	1,624
December	1,081	1,151	1,528	1,405	1,858
<b>Total</b>	<b>11,482</b>	<b>13,748</b>	<b>16,264</b>	<b>18,260</b>	<b>22,531</b>
Percentage					
January	8.3	4.0	5.5	8.8	5.5
February	7.3	7.4	7.9	7.8	5.4
March	8.5	9.1	4.9	6.8	7.8
April	8.7	10.6	8.5	8.2	8.1
May	7.5	8.3	7.8	7.6	5.0
June	11.2	9.2	9.5	9.4	8.0
July	7.5	6.0	10.4	8.8	10.0
August	7.8	9.4	9.0	8.3	8.2
September	5.9	9.4	9.0	9.1	9.6
October	8.2	9.2	8.6	9.4	8.0
November	9.7	9.1	9.5	8.1	7.2
December	9.4	8.4	9.4	7.7	8.2
<b>Total</b>	<b>100</b>	<b>100.0</b>	<b>100.0</b>	<b>100.0</b>	<b>100.0</b>

Chart 3: Visitors Arrival by month, 2006 - 2010

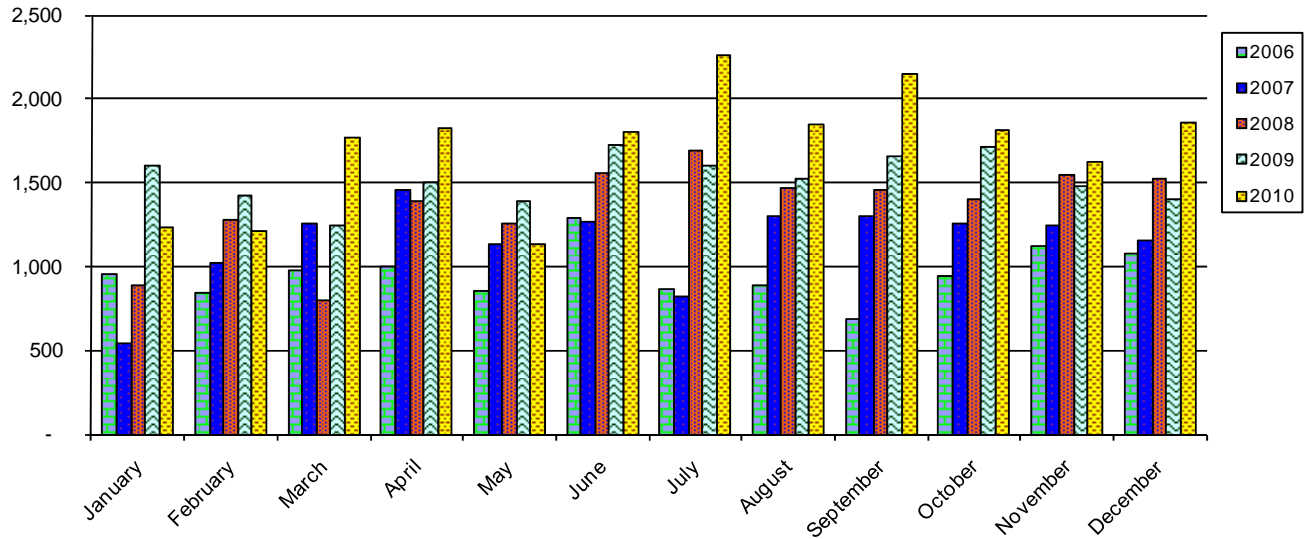




Table 4: Visitors, classified as tourists by Country of residence by year, quarter and average length of stay, 2008 – 2010: 4<sup>th</sup> Quarter 2010

Country of Usual Residence	2008								2009								2010							
	Quarter 1		Quarter 2		Quarter 3		Quarter 4		Quarter 1		Quarter 2		Quarter 3		Quarter 4		Quarter 1		Quarter 2		Quarter 3		Quarter 4	
	tourist	day	tourist	day	tourist	day	tourist	day	tourist	day	tourist	day	tourist	day	tourist	day	tourist	day	tourist	day	tourist	day	tourist	day
Australia	342	14	538	14	732	14	746	15	546	12	768	13	878	14	724	15	558	13	756	11	1,010	12	854	15
PNG	19	12	41	11	42	12	54	21	24	13	36	11	35	13	62	33	46	22	41	11	36	15	60	27
US	113	8	190	14	223	12	235	14	75	10	95	16	163	13	141	14	46	16	122	11	166	12	114	13
NZ	29	12	57	19	95	12	107	22	33	14	41	14	99	17	41	23	17	18	62	14	140	14	65	19
UK	20	19	44	21	44	23	67	13	44	16	38	27	52	28	37	25	24	18	48	19	72	23	54	13
Japan	71	11	21	8	101	10	111	8	61	7	56	7	84	11	286	5	45	8	23	5	56	12	94	6
Germany	12	25	10	8	23	7	30	17	21	26	6	9	15	14	18	27	17	16	23	13	13	17	13	14
Canada	11	11	7	22	20	13	33	14	5	25	6	24	9	29	11	13	14	18	8	33	7	12	11	14
Oth.Pacific	60	7	174	6	48	10	58	13	68	10	17	8	84	14	29	18	22	16	8	7	16	12	23	27
Vanuatu	10	20	13	16	20	13	33	28	1	10	7	13	-	-	-	10	4	9	9	15	10	18	12	14
Hong Kong	15	19	3	4	6	9	15	7	0	-	6	12	-	-	-	20	3	15	-	-	8	10	2	3
Fiji	14	19	13	24	16	6	22	22	6	16	13	7	8	7	19	-	9	23	10	25	15	31	21	29
Oth.Asia	59	17	115	15	87	21	108	19	61	17	88	24	78	22	61	30	78	20	106	19	126	13	107	23
Netherlands	3	16	2	7	2	14	16	12	4	20	6	44	6	18	10	15	5	8	4	15	6	15	5	7
Oth.Europe	30	16	30	19	55	15	70	13	74	11	18	22	50	12	53	19	48	22	33	17	72	16	34	16
France	3	23	7	23	21	17	38	12	14	11	2	17	11	19	16	14	6	12	13	23	9	16	8	21
Italy	1	11	3	8	14	11	25	5	5	28	2	12	19	14	15	43	2	12	1	8	11	17	5	52
Oth.Country	6	7	4	10	13	26	39	10	5	5	12	20	23	12	12	11	21	22	15	9	24	14	14	18
<b>Total</b>	<b>818</b>	<b>15</b>	<b>1,272</b>	<b>13</b>	<b>1,562</b>	<b>14</b>	<b>1,807</b>	<b>15</b>	<b>1,047</b>	<b>13</b>	<b>1,217</b>	<b>15</b>	<b>1,614</b>	<b>15</b>	<b>1,550</b>	<b>15</b>	<b>965</b>	<b>15</b>	<b>1,282</b>	<b>12</b>	<b>1,797</b>	<b>13</b>	<b>1,496</b>	<b>18</b>

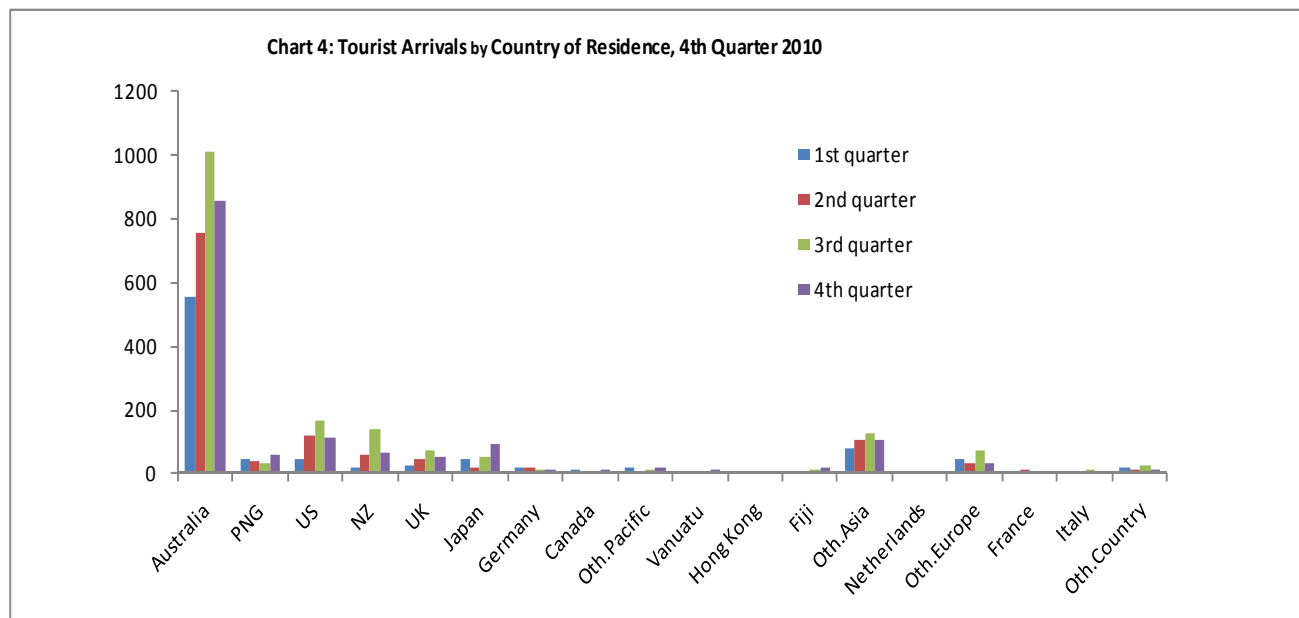


Table 5: Visitors Arrival by Country of Residence by Purpose of Visit by sex: 4<sup>th</sup> Quarter 2010

Country of Usual Residence	Business & Conference			Holiday & Vocation			Transit & Stopover			Visit friends/Relatives			Other			Total		
	M	F	T	M	F	T	M	F	T	M	F	T	M	F	T	M	F	All
Australia	723	182	905	504	350	854	12	3	15	201	192	393	470	121	591	1,910	848	2,758
PNG	172	44	216	42	18	60	5	1	6	42	36	78	90	19	109	351	118	469
US	37	8	45	72	42	114	5	-	5	13	8	21	21	6	27	148	64	212
NZ	176	39	215	37	28	65	9	-	9	50	41	91	55	19	74	327	127	454
UK	18	3	21	34	20	54	1	-	1	9	7	16	6	3	9	68	33	101
Japan	63	4	67	62	32	94	1	-	1	5	2	7	6	2	8	137	40	177
Germany	3	1	4	10	3	13	-	-	-	-	1	1	-	-	-	13	5	18
Canada	8	1	9	8	3	11	-	-	-	4	4	8	4	2	6	24	10	34
Oth.Pacific	48	33	81	14	9	23	7	4	11	7	9	16	27	12	39	103	67	170
Vanuatu	59	16	75	6	6	12	12	3	15	12	12	24	14	5	19	103	42	145
Hong Kong	3	-	3	1	1	2	-	-	-	-	-	-	-	-	-	4	1	5
Fiji	97	40	137	11	10	21	1	-	1	18	11	29	37	9	46	164	70	234
Oth.Asia	112	12	124	89	18	107	12	-	12	26	13	39	51	3	54	290	46	336
Netherlands	7	-	7	2	3	5	2	1	3	1	1	2	-	-	-	12	5	17
Oth.Europe	8	3	11	16	18	34	6	-	6	2	4	6	7	2	9	39	27	66
France	4	3	7	5	3	8	1	1	2	1	1	2	3	-	3	14	8	22
Italy	4	2	6	5	-	5	-	-	-	2	-	2	4	2	6	15	4	19
Oth.Country	16	2	18	8	6	14	3	-	3	6	3	9	11	3	14	44	14	58
<b>Total</b>	<b>1,558</b>	<b>393</b>	<b>1,951</b>	<b>926</b>	<b>570</b>	<b>1,496</b>	<b>77</b>	<b>13</b>	<b>90</b>	<b>399</b>	<b>345</b>	<b>744</b>	<b>806</b>	<b>208</b>	<b>1,014</b>	<b>3,766</b>	<b>1,529</b>	<b>5,295</b>
Percentage																		
Australia	26.2	6.6	32.8	18.3	12.7	31.0	0.4	0.1	0.5	7.3	7.0	14.2	17.0	4.4	21.4	69.3	30.7	100.0
PNG	36.7	9.4	46.1	9.0	3.8	12.8	1.1	0.2	1.3	9.0	7.7	16.6	19.2	4.1	23.2	74.8	25.2	100.0
US	17.5	3.8	21.2	34.0	19.8	53.8	2.4	-	2.4	6.1	3.8	9.9	9.9	2.8	12.7	69.8	30.2	100.0
NZ	38.8	8.6	47.4	8.1	6.2	14.3	2.0	-	2.0	11.0	9.0	20.0	12.1	4.2	16.3	72.0	28.0	100.0
UK	17.8	3.0	20.8	33.7	19.8	53.5	1.0	-	1.0	8.9	6.9	15.8	5.9	3.0	8.9	67.3	32.7	100.0
Japan	35.6	2.3	37.9	35.0	18.1	53.1	0.6	-	0.6	2.8	1.1	4.0	3.4	1.1	4.5	77.4	22.6	100.0
Germany	16.7	5.6	22.2	55.6	16.7	72.2	-	-	-	-	5.6	5.6	-	-	-	72.2	27.8	100.0
Canada	23.5	2.9	26.5	23.5	8.8	32.4	-	-	-	11.8	11.8	23.5	11.8	5.9	17.6	70.6	29.4	100.0
Oth.Pacific	28.2	19.4	47.6	8.2	5.3	13.5	4.1	2.4	6.5	4.1	5.3	9.4	15.9	7.1	22.9	60.6	39.4	100.0
Vanuatu	40.7	11.0	51.7	4.1	4.1	8.3	8.3	2.1	10.3	8.3	8.3	16.6	9.7	3.4	13.1	71.0	29.0	100.0
Hong Kong	60.0	-	60.0	20.0	20.0	40.0	-	-	-	-	-	-	-	-	-	80.0	20.0	100.0
Fiji	41.5	17.1	58.5	4.7	4.3	9.0	0.4	-	0.4	7.7	4.7	12.4	15.8	3.8	19.7	70.1	29.9	100.0
Oth.Asia	33.3	3.6	36.9	26.5	5.4	31.8	3.6	-	3.6	7.7	3.9	11.6	15.2	0.9	16.1	86.3	13.7	100.0
Netherlands	41.2	-	41.2	11.8	17.6	29.4	11.8	5.9	17.6	5.9	5.9	11.8	-	-	-	70.6	29.4	100.0
Oth.Europe	12.1	4.5	16.7	24.2	27.3	51.5	9.1	-	9.1	3.0	6.1	9.1	10.6	3.0	13.6	59.1	40.9	100.0
France	18.2	13.6	31.8	22.7	13.6	36.4	4.5	4.5	9.1	4.5	4.5	9.1	13.6	-	13.6	63.6	36.4	100.0
Italy	21.1	10.5	31.6	26.3	-	26.3	-	-	-	10.5	-	10.5	21.1	10.5	31.6	78.9	21.1	100.0
Oth.Country	27.6	3.4	31.0	13.8	10.3	24.1	5.2	-	5.2	10.3	5.2	15.5	19.0	5.2	24.1	75.9	24.1	100.0
<b>Total</b>	<b>29.4</b>	<b>7.4</b>	<b>36.8</b>	<b>17.5</b>	<b>10.8</b>	<b>28.3</b>	<b>1.5</b>	<b>0.2</b>	<b>1.7</b>	<b>7.5</b>	<b>6.5</b>	<b>14.1</b>	<b>15.2</b>	<b>3.9</b>	<b>19.2</b>	<b>71.1</b>	<b>28.9</b>	<b>100.0</b>

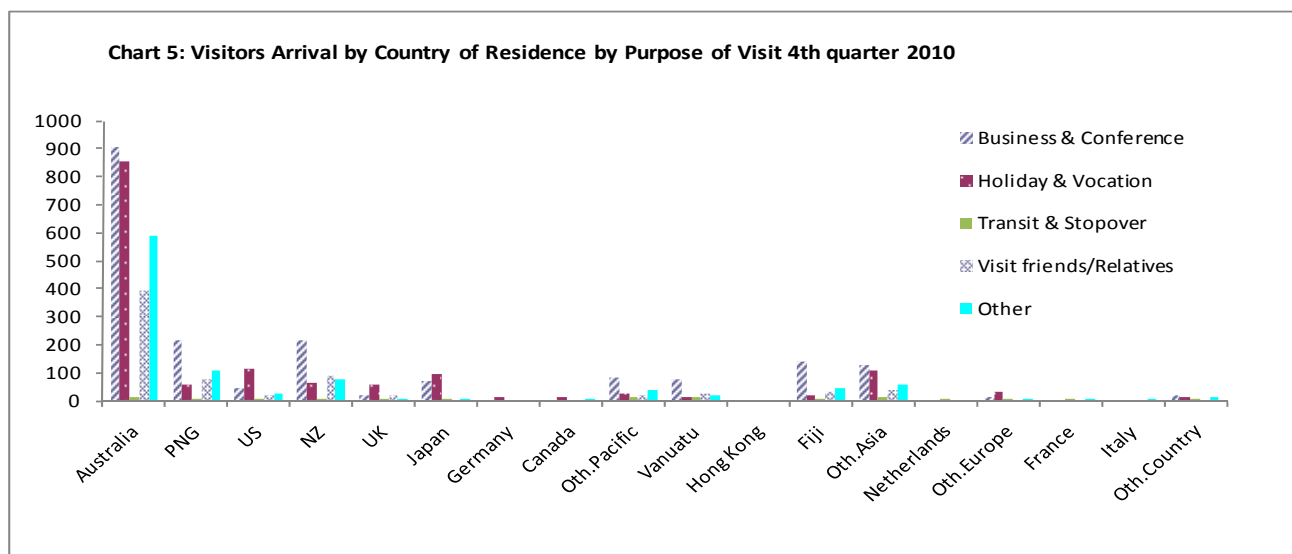


Table 6: Visitors Arrival by Country of Residence by Age Groups by Sex: 4<sup>th</sup> Quarter 2010

Country of Usual Residence	Age-Group																Total		
	0-14		15-24		25-34		35-44		45-54		55-64		65+		Not Stated				
	M	F	M	F	M	F	M	F	M	F	M	F	M	F	M	F			
Australia	69	78	140	115	346	179	461	154	414	145	321	102	98	32	61	43	1,910	848	2,758
PNG	15	13	16	26	73	24	90	20	97	20	35	7	4	2	21	6	351	118	469
US	-	3	8	4	6	10	25	6	42	13	42	18	21	8	4	2	148	64	212
NZ	14	10	28	25	60	22	69	26	71	22	50	11	14	2	21	9	327	127	454
UK	3	1	1		15	6	9	6	13	6	15	7	9	6	3	1	68	33	101
Japan	-	-	2	3	13	5	23	5	29	4	22	3	45	20	3	-	137	40	177
Germany	-	-	-	1	-	1	1		8	3	2		2	-	-	-	13	5	18
Canada	1	-	-	-	2	3	6	1	5	2	5	3	5	1	-	-	24	10	34
Oth.Pacific	-	2	10	6	21	27	32	14	21	8	12	4	2	1	5	5	103	67	170
Vanuatu	2	3	11	4	16	13	29	12	27	4	11	2	3	-	4	4	103	42	145
Hong Kong	-	-	-	-	-	-	-	-	3	1	-	-	-	-	1	-	4	1	5
Fiji	4	1	13	9	38	20	42	21	40	14	22	3	2	2	3	-	164	70	234
Oth.Asia	-	-	16	5	57	11	90	14	72	11	41	1	5	-	9	4	290	46	336
Netherland	-	-	-	-	-	-	2	3	3	1	5		2	1	-	-	12	5	17
Oth.Europe	1	2	2	3	11	5	11	3	4	9	9	3	-	2	1	-	39	27	66
France	-	-	-	-	3	3	4	-	5	2	2	3	-	-	-	-	14	8	22
Italy	-	1	2	-	-	2	3	-	4	-	5	1	1	-	-	-	15	4	19
Oth.Country	-	-	2	1	9	6	14	2	7	2	7	3	3	-	2	-	44	14	58
<b>Total</b>	<b>109</b>	<b>114</b>	<b>251</b>	<b>202</b>	<b>670</b>	<b>337</b>	<b>911</b>	<b>287</b>	<b>865</b>	<b>267</b>	<b>606</b>	<b>171</b>	<b>216</b>	<b>77</b>	<b>138</b>	<b>74</b>	<b>3,766</b>	<b>1,529</b>	<b>5,295</b>
<b>Percentage</b>																			
Australia	2.5	2.8	5.1	4.2	12.5	6.5	16.7	5.6	15.0	5.3	11.6	3.7	3.6	1.2	2.2	1.6	69.3	30.7	100.0
PNG	3.2	2.8	3.4	5.5	15.6	5.1	19.2	4.3	20.7	4.3	7.5	1.5	0.9	0.4	4.5	1.3	74.8	25.2	100.0
US	-	1.4	3.8	1.9	2.8	4.7	11.8	2.8	19.8	6.1	19.8	8.5	9.9	3.8	1.9	0.9	69.8	30.2	100.0
NZ	3.1	2.2	6.2	5.5	13.2	4.8	15.2	5.7	15.6	4.8	11.0	2.4	3.1	0.4	4.6	2.0	72.0	28.0	100.0
UK	3.0	1.0	1.0	-	14.9	5.9	8.9	5.9	12.9	5.9	14.9	6.9	8.9	5.9	3.0	1.0	67.3	32.7	100.0
Japan	-	-	1.1	1.7	7.3	2.8	13.0	2.8	16.4	2.3	12.4	1.7	25.4	11.3	1.7	-	77.4	22.6	100.0
Germany	-	-	-	5.6	-	5.6	5.6	-	44.4	16.7	11.1	-	11.1	-	-	-	72.2	27.8	100.0
Canada	2.9	-	-	-	5.9	8.8	17.6	2.9	14.7	5.9	14.7	8.8	14.7	2.9	-	-	70.6	29.4	100.0
Oth.Pacific	-	1.2	5.9	3.5	12.4	15.9	18.8	8.2	12.4	4.7	7.1	2.4	1.2	0.6	2.9	2.9	60.6	39.4	100.0
Vanuatu	1.4	2.1	7.6	2.8	11.0	9.0	20.0	8.3	18.6	2.8	7.6	1.4	2.1	-	2.8	2.8	71.0	29.0	100.0
Hong Kong	-	-	-	-	-	-	-	-	60.0	20.0	-	-	-	-	20.0	-	80.0	20.0	100.0
Fiji	1.7	0.4	5.6	3.8	16.2	8.5	17.9	9.0	17.1	6.0	9.4	1.3	0.9	0.9	1.3	-	70.1	29.9	100.0
Oth.Asia	-	-	4.8	1.5	17.0	3.3	26.8	4.2	21.4	3.3	12.2	0.3	1.5	-	2.7	1.2	86.3	13.7	100.0
Netherland	-	-	-	-	-	-	11.8	17.6	17.6	5.9	29.4	-	11.8	5.9	-	-	70.6	29.4	100.0
Oth.Europe	1.5	3.0	3.0	4.5	16.7	7.6	16.7	4.5	6.1	13.6	13.6	4.5	-	3.0	1.5	-	59.1	40.9	100.0
France	-	-	-	-	13.6	13.6	18.2	-	22.7	9.1	9.1	13.6	-	-	-	-	63.6	36.4	100.0
Italy	-	5.3	10.5	-	-	10.5	15.8	-	21.1	-	26.3	5.3	5.3	-	-	-	78.9	21.1	100.0
Oth.Country	-	-	3.4	1.7	15.5	10.3	24.1	3.4	12.1	3.4	12.1	5.2	5.2	-	3.4	-	75.9	24.1	100.0
<b>Total</b>	<b>2.1</b>	<b>2.2</b>	<b>4.7</b>	<b>3.8</b>	<b>12.7</b>	<b>6.4</b>	<b>17.2</b>	<b>5.4</b>	<b>16.3</b>	<b>5.0</b>	<b>11.4</b>	<b>3.2</b>	<b>4.1</b>	<b>1.5</b>	<b>2.6</b>	<b>1.4</b>	<b>71.1</b>	<b>28.9</b>	<b>100.0</b>

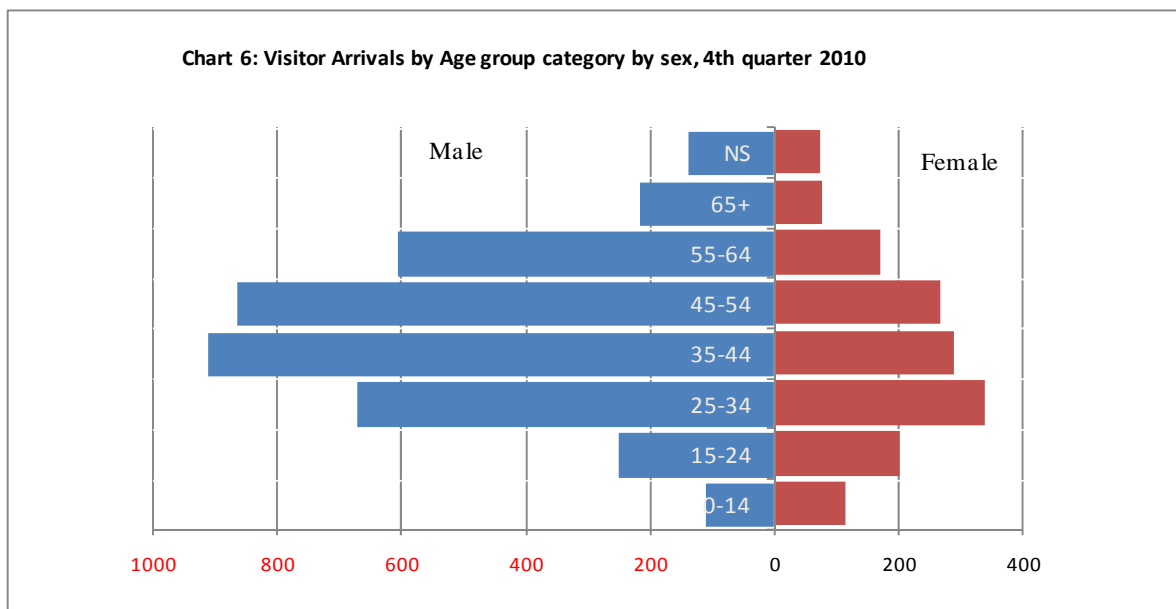


Table 7: Visitors Arrival by Country of Residence by Occupation and Sex: 4<sup>th</sup> Quarter 2010

Country of Usual Residence	Professional and Technical		Administrati on and Managerial		Clerical & Related Work		Sales Worker		Service Worker		Agriculture Forestry Fishery		Production & Related Work		Other		No Work		Total		
	M	F	M	F	M	F	M	F	M	F	M	F	M	F	M	F	M	F	M	F	All
	Australia	526	329	255	55	6	27	32	4	197	81	42	3	216	4	540	268	96	77	1,910	848
PNG	111	60	37	1	9	6	1	1	8	9	5	-	43	-	124	32	13	9	351	118	469
US	56	26	12	4	1	1	8	1	-	5	2	-	3	-	47	13	19	14	148	64	212
NZ	98	50	57	9	6	5	2	-	33	16	3	1	17	-	92	36	19	10	327	127	454
UK	23	9	9	1	-	1	-	-	1	6	-	-	-	-	22	7	13	9	68	33	101
Japan	28	5	7	-	5	3	3	-	1	8	2	-	5	-	50	5	36	19	137	40	177
Germany	8	4	1	-	1	-	-	-	-	-	-	-	-	-	3	1	-	-	13	5	18
Canada	2	-	-	2	-	-	1	-	-	2	-	-	2	-	11	4	8	2	24	10	34
Oth.Pacific	21	12	7	6	4	3	1	-	22	7	2	-	3	-	35	29	8	10	103	67	170
Vanuatu	45	19	7	2	6	2	1	-	3	1	1	2	3	-	34	9	3	7	103	42	145
Hong Kong	-	-	-	-	-	-	1	-	-	1	-	-	-	-	3	-	-	-	4	1	5
Fiji	48	20	19	4	3	4	4	2	9	9	7	-	3	-	67	30	4	1	164	70	234
Oth.Asia	56	12	50	3	3	1	54	2	2	9	17	-	18	-	74	18	16	1	290	46	336
Netherlands	7	1	-	2	-	-	-	-	1	-	-	-	-	-	4	-	1	1	12	5	17
Oth.Europe	18	12	5	1	-	3	-	-	-	1	-	-	2	-	13	7	1	3	39	27	66
France	3	2	-	-	-	-	-	-	2	-	-	-	2	-	6	4	1	2	14	8	22
Italy	5	-	2	-	-	-	-	-	2	-	-	-	-	-	6	4	-	-	15	4	19
Oth.Country	20	4	3	2	-	-	1	-	1	1	-	-	1	-	16	5	2	2	44	14	58
<b>Total</b>	<b>1075</b>	<b>565</b>	<b>471</b>	<b>92</b>	<b>44</b>	<b>56</b>	<b>109</b>	<b>11</b>	<b>281</b>	<b>156</b>	<b>81</b>	<b>6</b>	<b>318</b>	<b>4</b>	<b>1147</b>	<b>472</b>	<b>240</b>	<b>167</b>	<b>3,766</b>	<b>1,529</b>	<b>5,295</b>
<b>Percentage</b>																					
Australia	19.1	11.9	9.2	2.0	0.2	1.0	1.2	0.1	7.1	2.9	1.5	0.1	7.8	0.1	19.6	9.7	3.5	2.8	69.3	30.7	100.0
PNG	23.7	12.8	7.9	0.2	1.9	1.3	0.2	0.2	1.7	1.9	1.1	-	9.2	-	26.4	6.8	2.8	1.9	74.8	25.2	100.0
US	26.4	12.3	5.7	1.9	0.5	0.5	3.8	0.5	-	2.4	0.9	-	1.4	-	22.2	6.1	9.0	6.6	69.8	30.2	100.0
NZ	21.6	11.0	12.6	2.0	1.3	1.1	0.4	-	7.3	3.5	0.7	0.2	3.7	-	20.3	7.9	4.2	2.2	72.0	28.0	100.0
UK	22.8	8.9	8.9	1.0	-	1.0	-	-	1.0	5.9	-	-	-	-	21.8	6.9	12.9	8.9	67.3	32.7	100.0
Japan	15.8	2.8	4.0	-	2.8	1.7	1.7	-	0.6	4.5	1.1	-	2.8	-	28.2	2.8	20.3	10.7	77.4	22.6	100.0
Germany	44.4	22.2	5.6	-	5.6	-	-	-	-	-	-	-	-	-	16.7	5.6	-	-	72.2	27.8	100.0
Canada	5.9	-	-	5.9	-	-	2.9	-	-	5.9	-	-	5.9	-	32.4	11.8	23.5	5.9	70.6	29.4	100.0
Oth.Pacific	12.4	7.1	4.1	3.5	2.4	1.8	0.6	-	12.9	4.1	1.2	-	1.8	-	20.6	17.1	4.7	5.9	60.6	39.4	100.0
Vanuatu	31.0	13.1	4.8	1.4	4.1	1.4	0.7	-	2.1	0.7	0.7	1.4	2.1	-	23.4	6.2	2.1	4.8	71.0	29.0	100.0
Hong Kong	-	-	-	-	-	-	20.0	-	-	20.0	-	-	-	-	60.0	-	-	-	80.0	20.0	100.0
Fiji	20.5	8.5	8.1	1.7	1.3	1.7	1.7	0.9	3.8	3.8	3.0	-	1.3	-	28.6	12.8	1.7	0.4	70.1	29.9	100.0
Oth.Asia	16.7	3.6	14.9	0.9	0.9	0.3	16.1	0.6	0.6	2.7	5.1	-	5.4	-	22.0	5.4	4.8	0.3	86.3	13.7	100.0
Netherlands	41.2	5.9	-	11.8	-	-	-	5.9	-	-	-	-	-	-	23.5	-	5.9	5.9	70.6	29.4	100.0
Oth.Europe	27.3	18.2	7.6	1.5	-	4.5	-	-	-	1.5	-	-	3.0	-	19.7	10.6	1.5	4.5	59.1	40.9	100.0
France	13.6	9.1	-	-	-	-	-	-	9.1	-	-	-	9.1	-	27.3	18.2	4.5	9.1	63.6	36.4	100.0
Italy	26.3	-	10.5	-	-	-	-	-	10.5	-	-	-	-	-	31.6	21.1	-	-	78.9	21.1	100.0
Oth.Country	34.5	6.9	5.2	3.4	-	-	1.7	-	1.7	1.7	-	-	1.7	-	27.6	8.6	3.4	3.4	75.9	24.1	100.0
<b>Total</b>	<b>20.3</b>	<b>10.7</b>	<b>8.9</b>	<b>1.7</b>	<b>0.8</b>	<b>1.1</b>	<b>2.1</b>	<b>0.2</b>	<b>5.3</b>	<b>2.9</b>	<b>1.5</b>	<b>0.1</b>	<b>6.0</b>	<b>0.1</b>	<b>21.7</b>	<b>8.9</b>	<b>4.5</b>	<b>3.2</b>	<b>71.1</b>	<b>28.9</b>	<b>100.0</b>

Chart 7: Visitor Arrivals by Occupation by sex, 4th quarter 2010

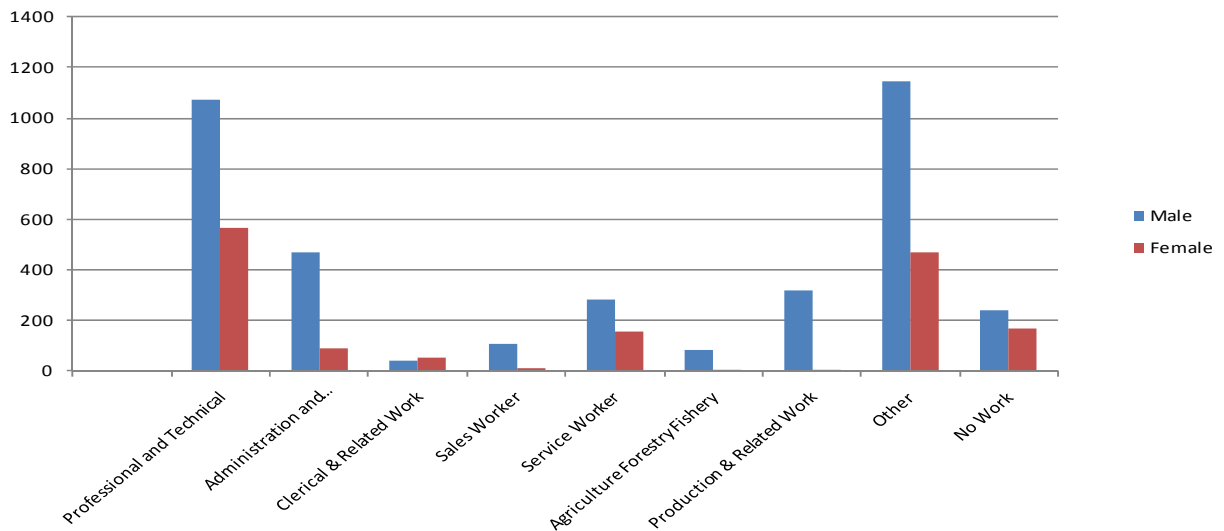
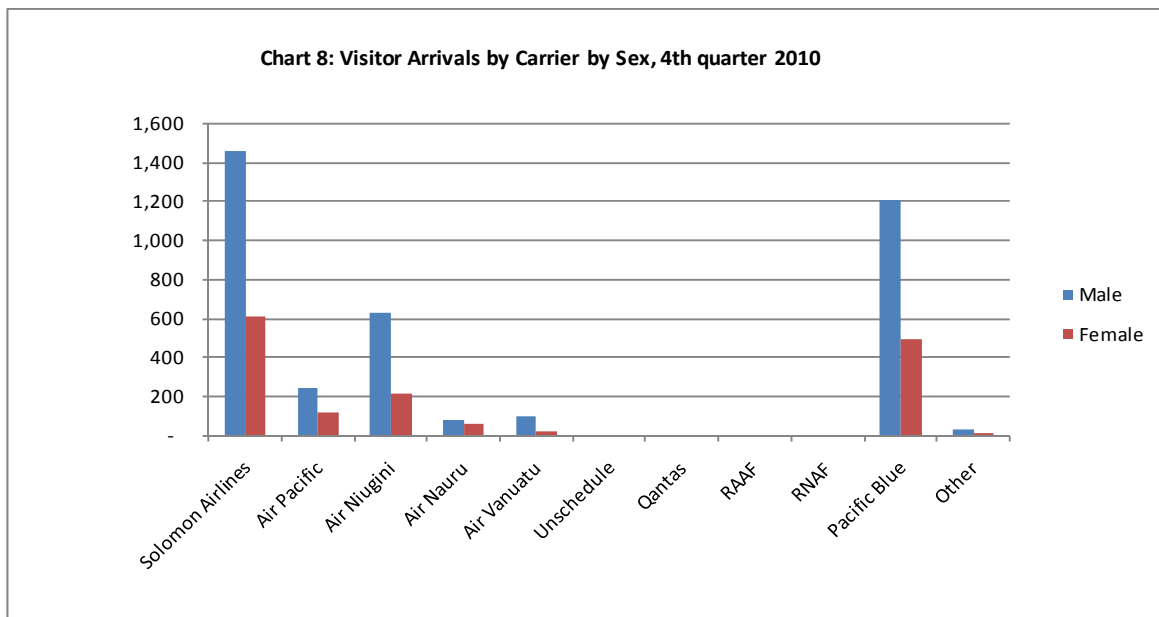


Table 8: Visitors Arrival by Country of residence by Carrier by Sex: 4<sup>th</sup> Quarter 2010

Country of Usual Residence	Solomon Airlines		Air Pacific		Air Niugini		Air Nauru		Air Vanuatu		Unschedule		Qantas		RAAF		RCAF		Other		Pacific Blue		Total			
	M	F	M	F	M	F	M	F	M	F	M	F	M	F	M	F	M	F	M	F	M	F	M	F	All	
	Australia	888	434	15	11	35	11	30	18	35	15	-	-	-	-	-	-	-	-	34	7	873	352	1,910	848	2,758
PNG	31	9	-	-	297	103	2	-	5	-	-	-	-	-	-	-	-	-	-	-	16	6	351	118	469	
US	37	18	48	26	38	12	1	-	-	-	-	-	-	-	-	-	-	-	-	-	24	8	148	64	212	
NZ	107	32	12	4	15	8	5	3	29	5	-	-	-	-	-	-	-	-	-	-	159	75	327	127	454	
UK	31	16	5	4	5	1	2	-	1	-	-	-	-	-	-	-	-	-	-	-	24	12	68	33	101	
Japan	48	14	5	-	69	15	6	7	-	-	-	-	-	-	-	-	-	-	-	-	9	4	137	40	177	
Germany	5	3	-	-	2	-	1	-	3	-	-	-	-	-	-	-	-	-	-	-	2	2	13	5	18	
Canada	17	5	3	1	3	2	-	1	-	-	-	-	-	-	-	-	-	-	-	-	1	1	24	10	34	
Oth.Pacific	19	14	25	15	20	9	26	23	5	1	-	-	-	-	-	-	-	-	-	-	8	5	103	67	170	
Vanuatu	21	7	52	26	14	4	-	1	13	3	-	-	-	-	-	-	-	-	-	-	3	1	103	42	145	
Hong Kong	1	-	-	-	1	1	-	-	-	-	-	-	-	-	-	-	-	-	-	-	2	-	4	1	5	
Fiji	29	16	58	21	67	29	2	1	-	-	-	-	-	-	-	-	-	-	-	-	8	3	164	70	234	
Oth.Asia	169	20	10	-	56	16	7	1	-	-	-	-	-	-	-	-	-	-	-	-	48	9	290	46	336	
Netherlands	7	3	2	1	-	-	1	-	1	-	-	-	-	-	-	-	-	-	-	-	1	1	12	5	17	
Oth.Europe	9	8	5	5	4	3	2	2	6	-	-	-	-	-	-	-	-	-	-	-	13	9	39	27	66	
France	5	3	1	-	1	1	-	-	3	1	-	-	-	-	-	-	-	-	-	-	4	3	14	8	22	
Italy	13	3	-	1	1	-	-	-	-	-	-	-	-	-	-	-	-	-	-	-	1	-	15	4	19	
Oth.Country	19	6	5	3	6	3	-	-	3	-	-	-	-	-	-	-	-	-	-	-	11	2	44	14	58	
<b>Total</b>	<b>1,456</b>	<b>611</b>	<b>246</b>	<b>118</b>	<b>634</b>	<b>218</b>	<b>85</b>	<b>57</b>	<b>104</b>	<b>25</b>	<b>-</b>	<b>-</b>	<b>-</b>	<b>-</b>	<b>-</b>	<b>-</b>	<b>-</b>	<b>-</b>	<b>-</b>	<b>34</b>	<b>7</b>	<b>1,207</b>	<b>493</b>	<b>3,766</b>	<b>1,529</b>	<b>5,295</b>
	<b>Percentage</b>																									
Australia	32.2	15.7	0.5	0.4	1.3	0.4	1.1	0.7	1.3	0.5	-	-	-	-	-	-	-	-	1.2	0.3	31.7	12.8	69.3	30.7	100.0	
PNG	6.6	1.9	-	-	63.3	22.0	0.4	-	1.1	-	-	-	-	-	-	-	-	-	-	-	3.4	1.3	74.8	25.2	100.0	
US	17.5	8.5	22.6	12.3	17.9	5.7	0.5	-	-	-	-	-	-	-	-	-	-	-	-	-	11.3	3.8	69.8	30.2	100.0	
NZ	23.6	7.0	2.6	0.9	3.3	1.8	1.1	0.7	6.4	1.1	-	-	-	-	-	-	-	-	-	-	35.0	16.5	72.0	28.0	100.0	
UK	30.7	15.8	5.0	4.0	5.0	1.0	2.0	-	1.0	-	-	-	-	-	-	-	-	-	-	-	23.8	11.9	67.3	32.7	100.0	
Japan	27.1	7.9	2.8	-	39.0	8.5	3.4	4.0	-	-	-	-	-	-	-	-	-	-	-	-	5.1	2.3	77.4	22.6	100.0	
Germany	27.8	16.7	-	-	11.1	0.0	5.6	-	16.7	-	-	-	-	-	-	-	-	-	-	-	11.1	11.1	72.2	27.8	100.0	
Canada	50.0	14.7	8.8	2.9	8.8	5.9	-	2.9	-	-	-	-	-	-	-	-	-	-	-	-	2.9	2.9	70.6	29.4	100.0	
Oth.Pacific	11.2	8.2	14.7	8.8	11.8	5.3	15.3	13.5	2.9	0.6	-	-	-	-	-	-	-	-	-	-	4.7	2.9	60.6	39.4	100.0	
Vanuatu	14.5	4.8	35.9	17.9	9.7	2.8	-	0.7	9.0	2.1	-	-	-	-	-	-	-	-	-	-	2.1	0.7	71.0	29.0	100.0	
Hong Kong	20.0	-	-	-	20.0	20.0	-	-	-	-	-	-	-	-	-	-	-	-	-	-	40.0	-	80.0	20.0	100.0	
Fiji	12.4	6.8	24.8	9.0	28.6	12.4	0.9	0.4	-	-	-	-	-	-	-	-	-	-	-	-	3.4	1.3	70.1	29.9	100.0	
Oth.Asia	50.3	6.0	3.0	-	16.7	4.8	2.1	0.3	-	-	-	-	-	-	-	-	-	-	-	-	14.3	2.7	86.3	13.7	100.0	
Netherlands	41.2	17.6	11.8	5.9	-	-	5.9	-	5.9	-	-	-	-	-	-	-	-	-	-	-	5.9	5.9	70.6	29.4	100.0	
Oth.Europe	13.6	12.1	7.6	7.6	6.1	4.5	3.0	3.0	9.1	-	-	-	-	-	-	-	-	-	-	-	19.7	13.6	59.1	40.9	100.0	
France	22.7	13.6	4.5	-	4.5	4.5	-	-	13.6	4.5	-	-	-	-	-	-	-	-	-	-	18.2	13.6	63.6	36.4	100.0	
Italy	68.4	15.8	-	5.3	5.3	-	-	-	-	-	-	-	-	-	-	-	-	-	-	-	5.3	-	78.9	21.1	100.0	
Oth.Country	32.8	10.3	8.6	5.2	10.3	5.2	-	-	5.2	-	-	-	-	-	-	-	-	-	-	-	19.0	3.4	75.9	24.1	100.0	
<b>Total</b>	<b>27.5</b>	<b>11.5</b>	<b>4.6</b>	<b>2.2</b>	<b>12.0</b>	<b>4.1</b>	<b>1.6</b>	<b>1.1</b>	<b>2.0</b>	<b>0.5</b>	<b>0.0</b>	<b>0.0</b>	<b>0.0</b>	<b>0.0</b>	<b>0.0</b>	<b>0.0</b>	<b>0.0</b>	<b>0.0</b>	<b>0.6</b>	<b>0.1</b>	<b>22.8</b>	<b>9.3</b>	<b>71.1</b>	<b>28.9</b>	<b>100.0</b>	



## Appendix 1

### Concepts and Definitions

Persons entering Solomon Islands classify themselves into three (3) categories; returning resident, intending resident, and visitor. The concepts and definitions of the various categories are as follows:

#### *(i) Returning residents*

- Solomon Islanders and non-Solomon Islanders who have left the country and are returning to continue their residence.
- Non Solomon Islanders includes resident permit holders and Diplomatic officials, and their immediate family members. This may also includes legal or official arrangements that fall out side of the above.

#### *(ii) Intending residents*

- Non-Solomon Islander who wish to take up residence in Solomon Islands.

#### *(iii) Visitors*

- Any traveller who is not a Solomon Islander and who purposely spend less time – at most a period of 120 days<sup>2</sup>, in the country and with the intention and purpose of visiting.
- *Tourist*
  - Visitors who further classify themselves stating their visit are purposely for *'holiday and vacation'*. This exclude, tourist arrivals by cruise ships.
  - Wife accompanying husband on business purpose is a private tourist unless also working.
  - *World Tourism Organization WTO definition of Tourism:*  
*It comprises the activities of persons travelling to and staying in places outside their usual environment for not more than a year for leisure, business and other purposes not related to the exercise of an activity remunerated from within the place visited*<sup>3</sup>.

#### *( iv) Markets*

- *Country of Usual Residence*

---

<sup>2</sup> Solomon Islands 1993 Statistical Yearbook.

<sup>3</sup> Dimensions of Hospitality, Study guide 1. p17

## Appendix 2

Table 9: Intending Resident Arrivals by Country of Residence by Occupation and Sex: 4<sup>th</sup> Quarter 2010

Country of Usual Residence	Professional and Technical		Administration and Managerial		Clerical & Related Work		Sales Worker		Service Worker		Agriculture Forestry Fishery		Production & Related Work		Other		No Work		Total		
	M	F	M	F	M	F	M	F	M	F	M	F	M	F	M	F	M	F	M	F	All
	Australia	53	32	31	-	5	3	3	1	99	22	3	-	12	-	64	44	5	15	275	117
PNG	11	10	8	-	-	-	-	-	38	13	1	-	4	-	9	-	7	6	78	29	107
US	4	3	2	1	-	-	-	-	-	1	-	-	-	-	4	7	3	1	13	13	26
NZ	10	7	8	1	1	-	-	-	44	6	1	-	1	-	8	7	2	2	75	23	98
UK	2	2	-	2	-	-	-	-	-	-	-	-	2	-	1	1	-	-	5	5	10
Japan	2	-	1	-	1	-	-	-	-	-	-	-	-	-	3	2	-	-	7	2	9
Germany	-	-	-	-	-	-	-	-	-	-	-	-	-	-	1	-	-	-	-	1	1
Canada	-	-	1	-	-	-	-	-	-	-	-	-	-	-	2	-	-	-	3	-	3
Oth.Pacific	4	2	-	1	-	-	-	-	24	6	-	-	-	-	4	4	1	1	33	14	47
Vanuatu	4	1	-	-	-	-	-	-	4	-	-	-	-	-	3	-	-	-	11	1	12
Hong Kong	1	-	-	-	-	-	-	-	-	-	-	-	-	-	-	-	-	-	1	-	1
Fiji	8	6	2	4	-	-	-	-	12	5	2	-	1	-	6	-	4	1	35	16	51
Oth.Asia	23	11	52	6	4	-	32	1	9	8	12	2	24	2	79	6	44	10	273	52	325
Netherland	-	-	-	-	-	-	-	-	-	-	-	-	-	-	1	-	-	-	1	-	1
Oth.Europe	1	1	-	-	-	-	-	-	-	1	-	-	1	-	1	1	-	-	3	3	6
France	-	-	-	-	-	-	-	-	-	1	-	-	-	-	1	2	1	2	2	5	7
Italy	2	-	-	-	-	-	-	-	-	-	-	-	-	-	-	-	1	-	3	-	3
Oth.Country	9	2	1	1	-	-	-	-	-	3	1	-	1	-	10	3	2	-	24	9	33
Total	134	77	106	16	11	3	35	2	230	66	20	2	46	2	196	78	70	38	842	290	1,132
Percentage																					
Australia	13.5	8.2	7.9	-	1.3	0.8	0.8	0.3	25.3	5.6	0.8	-	3.1	-	16.3	11.2	1.3	3.8	70.2	29.8	100.0
PNG	10.3	9.3	7.5	-	-	-	-	-	35.5	12.1	0.9	-	3.7	-	8.4	-	6.5	5.6	72.9	27.1	100.0
US	15.4	11.5	7.7	3.8	-	-	-	-	-	3.8	-	-	-	-	15.4	26.9	11.5	3.8	50.0	50.0	100.0
NZ	10.2	7.1	8.2	1.0	1.0	-	-	-	44.9	6.1	1.0	-	1.0	-	8.2	7.1	2.0	2.0	76.5	23.5	100.0
UK	20.0	20.0	-	20.0	-	-	-	-	-	-	-	-	-	-	20.0	10.0	-	-	50.0	50.0	100.0
Japan	22.2	-	11.1	-	11.1	-	-	-	-	-	-	-	-	-	33.3	22.2	-	-	77.8	22.2	100.0
Germany	-	-	-	-	-	-	-	-	-	-	-	-	-	-	-	100.0	-	-	-	100.0	100.0
Canada	-	-	33.3	-	-	-	-	-	-	-	-	-	-	-	66.7	-	-	-	100.0	-	100.0
Oth.Pacific	8.5	4.3	-	2.1	-	-	-	-	51.1	12.8	-	-	-	-	8.5	8.5	2.1	2.1	70.2	29.8	100.0
Vanuatu	33.3	8.3	-	-	-	-	-	-	33.3	-	-	-	-	-	25.0	-	-	-	91.7	8.3	100.0
Hong Kong	100.0	-	-	-	-	-	-	-	-	-	-	-	-	-	-	-	-	-	100.0	-	100.0
Fiji	15.7	11.8	3.9	7.8	-	-	-	-	23.5	9.8	3.9	-	2.0	-	11.8	-	7.8	2.0	68.6	31.4	100.0
Oth.Asia	7.1	3.4	16.0	1.8	1.2	-	9.8	0.3	2.8	2.5	3.7	0.6	7.4	0.6	24.3	1.8	13.5	3.1	84.0	16.0	100.0
Netherland	-	-	-	-	-	-	-	-	-	-	-	-	-	-	100.0	-	-	-	100.0	-	100.0
Oth.Europe	16.7	16.7	-	-	-	-	-	-	-	16.7	-	-	16.7	-	16.7	16.7	-	-	50.0	50.0	100.0
France	-	-	-	-	-	-	-	-	-	14.3	-	-	-	-	14.3	28.6	14.3	28.6	28.6	71.4	100.0
Italy	66.7	-	-	-	-	-	-	-	-	-	-	-	-	-	-	-	33.3	-	100.0	-	100.0
Oth.Country	27.3	6.1	3.0	3.0	-	-	-	-	-	9.1	3.0	-	3.0	-	30.3	9.1	6.1	-	72.7	27.3	100.0
Total	11.8	6.8	9.4	1.4	1.0	0.3	3.1	0.2	20.3	5.8	1.8	0.2	4.1	0.2	17.3	6.9	6.2	3.4	74.4	25.6	100.0

Table 10: Intending Resident Arrivals by Country of Residence by Age Groups by Sex: 4<sup>th</sup> Quarter 2010

Country of Usual Residence	Age-Group																		Total		
	0-14		15-24		25-34		35-44		45-54		55-64		65+		Not Stated		M	F	All		
	M	F	M	F	M	F	M	F	M	F	M	F	M	F	M	F	M	F	All		
Australia	19	18	27	6	53	20	71	24	54	28	34	14	7	2	10	5	275	117	392		
PNG	7	9	8	6	12	5	31	4	13	5	1				6		78	29	107		
US	1	1	-	-	-	3	4	2	1	2	5	2	-	-	2	3	13	13	26		
NZ	1	5	26	1	11	3	12	5	13	4	8	4	1	-	3	1	75	23	98		
UK	-	-	1	2	-	-	1	2	3	1	-	-	-	-	-	-	5	5	10		
Japan	-	-	-	-	1	-	1	1	4	-	1	-	-	-	-	1	7	2	9		
Germany	-	-	-	-	-	-	-	-	-	1	-	-	-	-	-	-	-	1	1		
Canada	-	-	-	-	-	-	3	-	-	-	-	-	-	-	-	-	3	-	3		
Oth.Pacific	2	1	1	1	12	6	11	4	5	1	-	1	-	-	2	-	33	14	47		
Vanuatu	-	-	1	-	1	1	7	-	2	-	-	-	-	-	-	-	11	1	12		
Hong Kong	-	-	-	-	1	-	-	-	-	-	-	-	-	-	-	-	1	-	1		
Fiji	4	2	1	4	6	2	9	3	12	1	1	2	-	-	2	2	35	16	51		
Oth.Asia	7	4	26	7	58	14	81	6	59	9	35	2	3	-	10	4	273	52	325		
Netherland	-	-	-	-	-	-	-	-	-	-	-	-	-	-	1	-	1	-	1		
Oth.Europe	-	-	1	-	-	2	1	-	1	1	-	-	-	-	-	-	3	3	6		
France	-	-	-	1	2	2	-	-	-	-	-	2	-	-	-	-	2	5	7		
Italy	-	-	-	-	-	-	-	-	2	-	-	-	-	-	1	-	3	-	3		
Oth.Country	4	-	-	-	1	3	8	5	8	-	2	1	-	-	1	-	24	9	33		
<b>Total</b>	<b>45</b>	<b>40</b>	<b>92</b>	<b>28</b>	<b>158</b>	<b>61</b>	<b>240</b>	<b>56</b>	<b>177</b>	<b>53</b>	<b>87</b>	<b>28</b>	<b>11</b>	<b>2</b>	<b>38</b>	<b>16</b>	<b>842</b>	<b>290</b>	<b>1,132</b>		
	<b>Percentage</b>																				
Australia	4.8	4.6	6.9	1.5	13.5	5.1	18.1	6.1	13.8	7.1	8.7	3.6	1.8	0.5	2.6	1.3	70.2	29.8	100.0		
PNG	6.5	8.4	7.5	5.6	11.2	4.7	29.0	3.7	12.1	4.7	0.9	-	-	-	5.6	-	72.9	27.1	100.0		
US	3.8	3.8	-	-	-	11.5	15.4	7.7	3.8	7.7	19.2	7.7	-	-	7.7	11.5	50.0	50.0	100.0		
NZ	1.0	5.1	26.5	1.0	11.2	3.1	12.2	5.1	13.3	4.1	8.2	4.1	1.0	-	3.1	1.0	76.5	23.5	100.0		
UK	-	-	10.0	20.0	-	-	10.0	20.0	30.0	10.0	-	-	-	-	-	-	50.0	50.0	100.0		
Japan	-	-	-	-	11.1	-	11.1	11.1	44.4	-	11.1	-	-	-	-	11.1	77.8	22.2	100.0		
Germany	-	-	-	-	-	-	-	-	-	100.0	-	-	-	-	-	-	-	100.0	100.0		
Canada	-	-	-	-	-	-	100.0	-	-	-	-	-	-	-	-	-	100.0	-	100.0		
Oth.Pacific	4.3	2.1	2.1	2.1	25.5	12.8	23.4	8.5	10.6	2.1	-	2.1	-	-	4.3	-	70.2	29.8	100.0		
Vanuatu	-	-	8.3	-	8.3	8.3	58.3	-	16.7	-	-	-	-	-	-	-	91.7	8.3	100.0		
Hong Kong	-	-	-	-	100.0	-	-	-	-	-	-	-	-	-	-	-	100.0	-	100.0		
Fiji	7.8	3.9	2.0	7.8	11.8	3.9	17.6	5.9	23.5	2.0	2.0	3.9	-	-	3.9	3.9	68.6	31.4	100.0		
Oth.Asia	2.2	1.2	8.0	2.2	17.8	4.3	24.9	1.8	18.2	2.8	10.8	0.6	0.9	-	3.1	1.2	84.0	16.0	100.0		
Netherland	-	-	-	-	-	-	-	-	-	-	-	-	-	-	100.0	-	100.0	-	100.0		
Oth.Europe	-	-	16.7	-	-	33.3	16.7	-	16.7	16.7	-	-	-	-	-	-	50.0	50.0	100.0		
France	-	-	-	14.3	28.6	28.6	-	-	-	-	-	28.6	-	-	-	-	28.6	71.4	100.0		
Italy	-	-	-	-	-	-	-	-	66.7	-	-	-	-	-	33.3	-	100.0	-	100.0		
Oth.Country	12.1	-	-	-	3.0	9.1	24.2	15.2	24.2	-	6.1	3.0	-	-	3.0	-	72.7	27.3	100.0		
<b>Total</b>	<b>4.0</b>	<b>3.5</b>	<b>8.1</b>	<b>2.5</b>	<b>14.0</b>	<b>5.4</b>	<b>21.2</b>	<b>4.9</b>	<b>15.6</b>	<b>4.7</b>	<b>7.7</b>	<b>2.5</b>	<b>1.0</b>	<b>0.2</b>	<b>3.4</b>	<b>1.4</b>	<b>74.4</b>	<b>25.6</b>	<b>100.0</b>		



Table 11: Returning Resident Arrivals by Country of Residence by Age Groups by Sex: 4<sup>th</sup> Quarter 2010

Country of Usual Residence	Age-Group																Total		
	0-14		15-24		25-34		35-44		45-54		55-64		65+		Not Stated		M	F	All
	M	F	M	F	M	F	M	F	M	F	M	F	M	F					
Australia	-	-	-	-	-	1	-	-	1	-	-	-	-	-	-	-	1	1	2
PNG	-	-	-	-	-	-	-	-	-	-	-	-	-	-	-	-	-	-	-
US	-	-	-	-	-	-	-	-	-	-	-	-	-	-	-	-	-	-	-
NZ	-	-	-	-	-	-	-	-	-	-	-	-	-	-	-	-	-	-	-
UK	-	-	-	-	-	-	-	-	-	-	-	-	-	-	-	-	-	-	-
Japan	-	-	1	2	-	-	-	-	-	-	-	-	-	1	1	-	10	3	13
Germany	-	-	-	-	-	-	-	-	-	-	-	-	-	-	-	-	-	-	-
Canada	-	-	-	-	-	-	-	-	-	-	-	-	-	-	-	-	-	-	-
Oth.Pacific	-	-	-	-	-	-	-	-	-	-	-	-	-	-	-	-	-	-	-
Vanuatu	-	-	-	-	-	-	1	-	-	-	-	-	-	-	-	-	-	-	1
Hong Kong	-	-	-	-	-	-	-	-	-	-	-	-	-	-	-	-	-	-	-
Fiji	-	-	-	-	-	-	-	-	-	-	-	-	-	-	-	-	-	-	-
Oth.Asia	-	-	-	-	-	-	1	-	-	-	-	-	-	-	-	-	1	-	1
Netherlands	-	-	-	-	-	-	-	-	-	-	-	-	-	-	-	-	-	-	-
Oth.Europe	-	-	-	-	-	-	-	-	-	-	-	-	-	-	-	-	-	-	-
France	-	-	-	-	-	-	-	-	-	-	-	-	-	-	-	-	-	-	-
Italy	-	-	-	-	-	-	-	-	-	-	-	-	-	-	-	-	-	-	-
Oth.Country	-	-	-	-	-	-	-	-	-	-	-	-	-	-	-	-	-	-	-
Solomon Is.	233	173	576	373	631	341	580	323	355	169	204	54	51	9	153	108	2,783	1,550	4,333
Total	233	173	577	375	631	342	582	323	356	169	204	54	51	9	154	109	2,788	1,554	4,350

Country of Usual Residence	Percentage																		
	M	F	M	F	M	F	M	F	M	F	M	F	M	F	M	F	M	F	All
Australia	-	-	-	-	-	50.0	-	-	50.0	-	-	-	-	-	-	-	50.0	50.0	100.0
PNG	-	-	-	-	-	-	-	-	-	-	-	-	-	-	-	-	-	-	-
US	-	-	-	-	-	-	-	-	-	-	-	-	-	-	-	-	-	-	-
NZ	-	-	-	-	-	-	-	-	-	-	-	-	-	-	-	-	-	-	-
UK	-	-	-	-	-	-	-	-	-	-	-	-	-	-	-	-	-	-	-
Japan	15.4	-	7.7	15.4	15.4	-	30.8	-	-	-	-	-	-	-	7.7	7.7	76.9	23.1	100.0
Germany	-	-	-	-	-	-	-	-	-	-	-	-	-	-	-	-	-	-	-
Canada	-	-	-	-	-	-	-	-	-	-	-	-	-	-	-	-	-	-	-
Oth.Pacific	-	-	-	-	-	-	-	-	-	-	-	-	-	-	-	-	-	-	-
Vanuatu	-	-	-	-	-	-	100.0	-	-	-	-	-	-	-	-	-	-	-	100.0
Hong Kong	-	-	-	-	-	-	-	-	-	-	-	-	-	-	-	-	-	-	-
Fiji	-	-	-	-	-	-	-	-	-	-	-	-	-	-	-	-	-	-	-
Oth.Asia	-	-	-	-	-	-	-	-	-	-	-	-	-	-	-	-	100.0	-	100.0
Netherlands	-	-	-	-	-	-	-	-	-	-	-	-	-	-	-	-	-	-	-
Oth.Europe	-	-	-	-	-	-	-	-	-	-	-	-	-	-	-	-	-	-	-
France	-	-	-	-	-	-	-	-	-	-	-	-	-	-	-	-	-	-	-
Italy	-	-	-	-	-	-	-	-	-	-	-	-	-	-	-	-	-	-	-
Oth.Country	-	-	-	-	-	-	-	-	-	-	-	-	-	-	-	-	-	-	-
Solomon Is.	5.4	4.0	13.3	8.6	14.6	7.9	13.4	7.5	8.2	3.9	4.7	1.2	1.2	0.2	3.5	2.5	64.2	35.8	100.0
Total	5.4	4.0	13.3	8.6	14.6	7.9	13.5	7.4	8.2	3.9	4.7	1.2	1.2	0.2	3.5	2.5	64.3	35.7	100.0

Table 12: Returning Resident Arrivals by Country of Residence by Occupation and Sex: 4<sup>th</sup> Quarter 2010

Country of Usual Residence	Professional and Technical		Administration and Managerial		Clerical & Related Work		Sales Worker		Service Worker		Agriculture Forestry Fishery		Production & Related Work		Other		No Work		Total		
	M	F	M	F	M	F	M	F	M	F	M	F	M	F	M	F	M	F	M	F	All
	Australia	-	-	-	-	-	-	-	-	-	-	-	-	-	1	1	-	-	1	1	2
PNG	-	-	-	-	-	-	-	-	-	-	-	-	-	-	-	-	-	-	-	-	-
US	-	-	-	-	-	-	-	-	-	-	-	-	-	-	-	-	-	-	-	-	-
NZ	-	-	-	-	-	-	-	-	-	-	-	-	-	-	-	-	-	-	-	-	-
UK	-	-	-	-	-	-	-	-	-	-	-	-	-	-	-	-	-	-	-	-	-
Japan	6	3	-	-	-	-	-	-	-	-	-	-	-	2	-	2	-	8	5	13	
Germany	-	-	-	-	-	-	-	-	-	-	-	-	-	-	-	-	-	-	-	-	-
Canada	-	-	-	-	-	-	-	-	-	-	-	-	-	-	-	-	-	-	-	-	-
Oth.Pacific	-	-	-	-	-	-	-	-	-	-	-	-	-	-	-	-	-	-	-	-	-
Vanuatu	-	-	-	-	-	-	-	-	-	-	-	-	-	1	-	-	-	1	-	1	-
Hong Kong	-	-	-	-	-	-	-	-	-	-	-	-	-	-	-	-	-	-	-	-	-
Fiji	-	-	-	-	-	-	-	-	-	-	-	-	-	-	-	-	-	-	-	-	-
Oth.Asia	-	-	-	-	-	-	-	-	-	-	-	-	-	1	-	-	-	-	-	1	-
Netherlands	-	-	-	-	-	-	-	-	-	-	-	-	-	-	-	-	-	-	-	-	-
Oth.Europe	-	-	-	-	-	-	-	-	-	-	-	-	-	-	-	-	-	-	-	-	-
France	-	-	-	-	-	-	-	-	-	-	-	-	-	-	-	-	-	-	-	-	-
Italy	-	-	-	-	-	-	-	-	-	-	-	-	-	-	-	-	-	-	-	-	-
Oth.Country	-	-	-	-	-	-	-	-	-	-	-	-	-	-	-	-	-	-	-	-	-
Solomon Is.	1449	772	208	77	83	46	49	16	70	198	38	15	57	4	633	276	196	146	2,783	1,550	4,333
Total	1455	775	208	77	83	46	49	16	70	198	38	15	57	4	638	277	198	146	2,796	1,554	4,350
<u>Percentage</u>																					
Australia	-	-	-	-	-	-	-	-	-	-	-	-	-	50.0	50.0	-	-	50.0	50.0	100.0	
PNG	-	-	-	-	-	-	-	-	-	-	-	-	-	-	-	-	-	-	-	-	-
US	-	-	-	-	-	-	-	-	-	-	-	-	-	-	-	-	-	-	-	-	-
NZ	-	-	-	-	-	-	-	-	-	-	-	-	-	-	-	-	-	-	-	-	-
UK	-	-	-	-	-	-	-	-	-	-	-	-	-	-	-	-	-	-	-	-	-
Japan	46.2	23.1	-	-	-	-	-	-	-	-	-	-	-	15.4	-	15.4	-	61.5	38.5	100.0	
Germany	-	-	-	-	-	-	-	-	-	-	-	-	-	-	-	-	-	-	-	-	-
Canada	-	-	-	-	-	-	-	-	-	-	-	-	-	-	-	-	-	-	-	-	-
Oth.Pacific	-	-	-	-	-	-	-	-	-	-	-	-	-	-	-	-	-	-	-	-	-
Vanuatu	-	-	-	-	-	-	-	-	-	-	-	-	-	100.0	-	-	-	100.0	-	100.0	
Hong Kong	-	-	-	-	-	-	-	-	-	-	-	-	-	-	-	-	-	-	-	-	-
Fiji	-	-	-	-	-	-	-	-	-	-	-	-	-	-	-	-	-	-	-	-	-
Oth.Asia	-	-	-	-	-	-	-	-	-	-	-	-	-	100.0	-	-	-	-	-	-	-
Netherlands	-	-	-	-	-	-	-	-	-	-	-	-	-	-	-	-	-	-	-	-	-
Oth.Europe	-	-	-	-	-	-	-	-	-	-	-	-	-	-	-	-	-	-	-	-	-
France	-	-	-	-	-	-	-	-	-	-	-	-	-	-	-	-	-	-	-	-	-
Italy	-	-	-	-	-	-	-	-	-	-	-	-	-	-	-	-	-	-	-	-	-
Oth.Country	-	-	-	-	-	-	-	-	-	-	-	-	-	-	-	-	-	-	-	-	-
Solomon Is.	33.4	17.8	4.8	1.8	1.9	1.1	1.1	0.4	1.6	4.6	0.9	0.3	1.3	0.1	14.6	6.4	4.5	3.4	64.2	35.8	100.0
Total	33.4	17.8	4.8	1.8	1.9	1.1	1.1	0.4	1.6	4.6	0.9	0.3	1.3	0.1	14.7	6.4	4.6	3.4	64.3	35.7	100.0