



**Solomon Islands Government**

**Statistical Bulletin: No: 11/2012**

**VISITOR STATISTICS**

(Second Quarter 2012)

**Solomon Islands National Statistics Office**

**Ministry of Finance**

**Honiara**

## TABLE OF CONTENTS

Introduction.....	3
COMMENTARY OF RESULTS .....	5
<i>International Arrivals</i> .....	5
<i>Arrivals by Country of Residence</i> .....	5
<i>Visitor by Month</i> .....	5
<i>Tourists</i> .....	5
<i>Visitor by Purpose of Visit</i> .....	5
<i>Visitor by Age Group</i> .....	5
<i>Visitor by Occupation:</i> .....	5
<i>Visitor by Carrier</i> .....	5
<b>Charts</b>	
<hr/>	
Chart 1: Arrivals by Category, 2 <sup>nd</sup> Quarter 2012 .....	6
Chart 2: Visitor Arrivals by Country of Residence by quarter: 2 <sup>nd</sup> Quarter 2012.....	7
Chart 3: Visitor Arrivals by Month, 2009 to 2 <sup>nd</sup> Quarter 2012 .....	8
Chart 4: Tourist Arrivals by Country of Residence, 2 <sup>nd</sup> Quarter 2012.....	9
Chart 5: Visitor Arrivals by Country of Residence by Purpose of Visit, 2 <sup>nd</sup> Quarter 2012.....	10
Chart 6: Visitor Arrivals by Age group category by Sex, 2 <sup>nd</sup> Quarter 2012.....	11
Chart 7: Visitor Arrivals by Occupation by Sex, 2 <sup>nd</sup> Quarter 2012.....	12
Chart 8: Visitor Arrivals by Carrier by Sex, 2 <sup>nd</sup> Quarter 2012.....	13
<b>Tables</b>	
Table 1: Total Arrivals Classified by Purpose of Travel by Sex by Year by Quarter: 2 <sup>nd</sup> Quarter 2012 .....	6
Table 2: Visitor Arrivals by Country of Residence by Year by Quarter: 2 <sup>nd</sup> Quarter 2012.....	7
Table 3: Visitor Arrivals by Month: 2006 to 2 <sup>nd</sup> Quarter 2012.....	8
Table 4: Visitors Classified as Tourists by Country of Residence by Year, Quarter and Average Length of Stay: 3 <sup>rd</sup> quarter 2009 to 2 <sup>nd</sup> Quarter 2012.....	9
Table 5: Visitor Arrivals by Country of Residence by Purpose of Visit by Sex: 2 <sup>nd</sup> Quarter 2012 .....	10
Table 6: Visitor Arrivals by Country of Residence by Age Groups by Sex: 2 <sup>nd</sup> Quarter 2012.....	11
Table 7: Visitor Arrivals by Country of Residence by Occupation and Sex: 2 <sup>nd</sup> Quarter 2012 .....	12
Table 8: Visitor Arrivals by Country of Residence by Carrier By Sex: 2 <sup>nd</sup> Quarter 2012.....	13
Appendix 1 .....	14
<i>Concepts and Definitions</i> .....	14
Appendix 2.....	15
Table 9: Intending Resident Arrivals by Country of Residence by Occupation and Sex: 2 <sup>nd</sup> Quarter 2012.....	15
Table 10: Intending Resident Arrivals by Country of Residence by Age Groups by Sex: 2 <sup>nd</sup> Quarter 2012.....	16
Table 11: Returning Resident Arrivals by Country of Residence by Age Groups by Sex: 2 <sup>nd</sup> Quarter 2012 ....	17
Table 12: Returning Resident Arrivals by Country of Residence by Occupation and Sex: 2 <sup>nd</sup> Quarter 2012 ...	18

## Introduction

This quarterly bulletin is produced by the National Statistics Office NSO in the Ministry of Finance and Treasury. It provides information on international arrivals comprised of the returning resident, intending resident, and visitor. The explanation of these categories is provided in Appendix 1 of the bulletin.

Visitor category comprised the bigger share of the bulletin, (portrayed in tables 1 to 8); compared to the returning and intending resident category portrayed in Tables 1, and 9 to 12. The bulletin includes twelve tables and eight charts stretched over cross-field tabulation, preferably to meet information need of local, regional, and international researchers.

The information captured through a self fill Disembarkation form that was completed by all disembarking passengers. The forms were collected by Immigration officials at international check-in counters on arrival. The coverage of the bulletin is complete.

Sheer acknowledgement is owed to the Immigration Department for their continuous support of this bulletin, by providing an office space and permitting the statistics office to input completed forms. With the official arrangement in-placed between the Statistics and Immigration departments this bulletin is possible.

The inclusion of four new tables 9 to 12 in Appendix 2 of the bulletin anticipates to complete the distribution portrait of Intending and Returning resident. The distribution is by age groups, occupation and by country of usual residence.

Data limitations, highlighted in the previous bulletin still remain, though some have substantially improved but noted again for ease of reference as follows:-

- Data entry duplication by the Immigration and Statistics departments was a long standing issue. Discussion of the issues had been made by the two departments, though resolution has been recognized, this was yet to be put in place.
- Timeliness of visitor statistics has improved but the bulletin may be delayed by the production process.
- The information contained in the bulletin is based on information captured from the data source by the SINSO.
- The monetary value of the industry is not available and thus not possible in this bulletin. The concepts and definitions of the arrival categories were included in Appendix 1. The symbols that are likely to be used are:

-	zero if representing a value
-	negative change if representing a percentage change
+	positive change if representing a percentage change
p	preliminary figure, subject to revision
r	revised
e	estimate
n/a	not available

For more information contact the Statistics Office, Department of Finance and Treasury:

TELEPHONE : (677) 27835

FACSMILE : (677) 23775

E-MAIL : STATS-management@mof.gov.sb

: STATS-SocialDemography@mof.gov.sb

WEBSITE : **<http://www.spc.int/prism/country/sb/stats>**

Contact persons:      1. Mrs. Irene KALAUMA, Principal Statistician  
                                 2. Mrs. Anterlyn TUZAKANA, Senior Statistician

## **COMMENTARY OF RESULTS**

### **International Arrivals**

Total Arrivals for the second quarter of 2012 was 1,1630. This is an increase of 29.3% compared to the previous quarter (1<sup>st</sup> Quarter 2012). Compared to the same quarter last year, it showed an increase of 17.9%.

Arrivals classified by the category for the second quarter of 2012 showed that returning resident comprise of 32% while intending resident 8% and visitor 60%.

Visitor arrivals for the second quarter showed an increase of 49.0% to 6,929 compared to the first quarter 2012 figure of 4,651. Compared to the same quarter in 2011 it showed an increase of 25.9%. Table 1 showed, visitor and returning resident categories comprised the larger proportion of all arrivals while the intending resident represents the lesser share during the quarter. Chart 1, gives a clear picture of all the categories.

### **Visitor by Country of Residence**

Arrivals by country of residence for second quarter showed that Australians (42.8%) are frequent travellers to Solomon Islands as in the previous quarters followed by Other Pacific (11.7%), Papua New Guinea (8.7%), New Zealand and Other Asia (7.9%) each, Fiji (7.4%), USA (5.1%) and Vanuatu (2.1%).

### **Visitor by Month**

Visitors by monthly arrivals for Second quarter showed that June has the highest number of arrivals with 3,122 persons. This was followed by the month of May which recorded a total of 1,968 persons and April the least with 1,839 persons. June peak confirms the participating contingents for the Festival of Pacific Arts in Solomon Islands from 1<sup>st</sup> to 14<sup>th</sup> July 2012.

### **Tourists**

Tourist<sup>1</sup> arrivals for second quarter of the year totalled to 1,547 persons and they spent an average of 14 days in the country. The highest number of tourists recorded for the quarter comes from Australia (57.6%) and staying in the country for an average of 13 days. This was followed by USA (11.8%), Other Asia (6.5%), New Zealand (4.5%) and PNG (3.5%).

### **Visitor by Purpose of Visit**

Distribution of visitors by purpose of visit confirmed Other (36.9%) as most popular during the quarter. This was followed by Business and conference (30.7%), Holiday & Vocation (21.4%), Visit friends & relatives (10%) and Transit & stopover the least by 0.9%.

### **Visitor by Age Group**

Visitor Arrivals by broad age groups show that 75.8% of arrivals were in the 25years to 64years age range. The younger and the older age brackets represent 19.5% while the remaining 4.7% represents arrivals who did not state their age. Male represent 71.0% of the arrival and female 29%. (Refer to Chart 6)

### **Visitor by Occupation**

Visitor by occupational category revealed that those who stated Other (35.3%) as their occupation recorded the highest during the quarter. This was followed by Professional & Technical (33.4%), Administration and managerial (9.5%), No work (8.6%), Service Work (5.6%). Table 7 further revealed that Australia not only dominated the Arrivals in terms of markets but also dominated most of the categories of occupations during the quarter. Refer to Table 7 for further analysis.

### **Visitor by Carrier**

The most popular carriers during the quarter were Solomon Airlines (44.4%) followed by Pacific Blue (23.2%), Air Niu Gini (13.5%) and Air Pacific (8.4%).

---

<sup>1</sup> Refer to Appendix 1 for the definition

Table 1: Total Arrivals Classified by Purpose of Travel by Sex, by Year by Quarter: 2<sup>nd</sup> Quarter 2012

Year / Quarter	Returning Resident						Intending Resident				Visitor			Total		
	Solomon Islander			Non-Solomon Islander			All	M	F	T	M	F	T	M	F	All
	M	F	T	M	F	T										
2008 1 <sup>st</sup>	1,537	938	2,475	4	2	6	2,481	537	174	711	2,094	879	2,973	4,172	1,993	6,165
2 <sup>nd</sup>	2,492	1,268	3,760	3	1	4	3,764	312	87	399	2,857	1,344	4,201	5,664	2,700	8,364
3 <sup>rd</sup>	1,593	952	2,545	761	437	1,198	3,743	605	155	760	3,138	1,480	4,618	6,097	3,024	9,121
4 <sup>th</sup>	2,507	1,366	3,873	969	453	1,422	5,295	396	125	521	3,063	1,409	4,472	6,935	3,353	10,288
2009 1 <sup>st</sup>	1,173	760	1,933	677	436	1,113	3,046	659	315	974	3,015	1,258	4,273	5,524	2,769	8,293
2 <sup>nd</sup>	1,427	728	2,155	471	238	709	2,864	611	244	855	3,242	1,374	4,616	5,751	2,584	8,335
3 <sup>rd</sup>	1,182	709	1,891	425	220	645	2,536	786	355	1,141	3,263	1,519	4,782	5,656	2,803	8,459
4 <sup>th</sup>	2,145	1,152	3,297	393	197	590	3,887	722	282	1,004	3,177	1,412	4,589	6,437	3,043	9,480
2010 1 <sup>st</sup>	1,045	695	1,740	550	342	892	2,632	808	380	1,188	3,115	1,095	4,210	5,518	2,512	8,030
2 <sup>nd</sup>	1,337	707	2,044	494	272	766	2,810	808	307	1,115	3,370	1,384	4,754	6,009	2,670	8,679
3 <sup>rd</sup>	1,421	730	2,151	485	274	759	2,910	835	316	1,151	4,494	1,768	6,262	7,235	3,088	10,323
4 <sup>th</sup>	2,783	1,550	4,333	13	4	17	4,350	848	284	1,132	3,766	1,529	5,295	7,410	3,367	10,777
2011 1 <sup>st</sup>	1,187	724	1,911	694	332	1,026	2,937	1,058	362	1,420	3,972	1,147	5,119	6,911	2,565	9,476
2 <sup>nd</sup>	1,601	880	2,481	615	292	907	3,388	716	258	974	4,071	1,434	5,505	7,003	2,864	9,867
3 <sup>rd</sup>	1,716	739	2,455	642	282	924	3,379	930	275	1,205	4,523	1,721	6,244	7,811	3,017	10,828
4 <sup>th</sup>	3,297	1,765	5,062	4	2	6	5,068	805	268	1,073	4,341	1,732	6,073	8,447	3,767	12,214
2012 1 <sup>st</sup>	1,915	994	2,909	15	3	18	2,927	1,029	387	1,416	3,554	1,097	4,651	6,513	2,481	8,994
2 <sup>nd</sup>	1,782	967	2,749	666	310	976	3,725	696	280	976	4,921	2,008	6,929	8,065	3,565	11,630
Percentage change																
09 <sup>1st</sup> -09 <sup>2nd</sup>	21.7	-4.2	11.5	-30.4	-45.4	-36.3	-6.0	-7.3	-22.5	-12.2	7.5	9.2	8.0	4.1	-6.7	0.5
08 <sup>2nd</sup> -09 <sup>2nd</sup>	-42.7	-42.6	-42.7	15600.0	23700.0	17625.0	-23.9	95.8	180.5	114.3	13.5	2.2	9.9	1.5	-4.3	-0.3
09 <sup>2nd</sup> -09 <sup>3rd</sup>	-17.2	-2.6	-12.3	-9.8	-7.6	-9.0	-11.5	28.6	45.5	33.5	0.6	10.6	3.6	-1.7	8.5	1.5
08 <sup>3rd</sup> -09 <sup>3rd</sup>	-25.8	-25.5	-25.7	-44.2	-49.7	-46.2	-32.2	29.9	129.0	50.1	4.0	2.6	3.6	-7.2	-7.3	-7.3
09 <sup>3rd</sup> -09 <sup>4th</sup>	81.5	62.5	74.4	-7.5	-10.5	-8.5	53.3	-8.1	-20.6	-12.0	-2.6	-7.0	-4.0	13.8	8.6	12.1
08 <sup>4th</sup> -09 <sup>4th</sup>	-14.4	-15.7	-14.9	-59.4	-56.5	-58.5	-26.6	82.3	125.6	92.7	3.7	0.2	2.6	-7.2	-9.2	-7.9
09 <sup>4th</sup> -10 <sup>1st</sup>	-51.3	-39.7	-47.2	39.9	73.6	51.2	-32.3	11.9	34.8	18.3	-2.0	-22.5	-8.3	-14.3	-17.4	-15.3
09 <sup>1st</sup> -10 <sup>1st</sup>	-10.9	-8.6	-10.0	-18.8	-21.6	-19.9	-13.6	22.6	20.6	22.0	3.3	-13.0	-1.5	-0.1	-9.3	-3.2
10 <sup>1st</sup> -10 <sup>2nd</sup>	27.9	1.7	17.5	-10.2	-20.5	-14.1	6.8	0.0	-19.2	-6.1	8.2	26.4	12.9	8.9	6.3	8.1
09 <sup>2nd</sup> -10 <sup>2nd</sup>	-6.3	-2.9	-5.2	4.9	14.3	8.0	-1.9	32.2	25.8	30.4	3.9	0.7	3.0	4.5	3.3	4.1
10 <sup>2nd</sup> -10 <sup>3rd</sup>	6.3	3.3	5.2	-1.8	0.7	-0.9	3.6	3.3	2.9	3.2	33.4	27.7	31.7	20.4	15.7	18.9
09 <sup>3rd</sup> -10 <sup>3rd</sup>	20.2	3.0	13.7	14.1	24.5	17.7	14.7	6.2	-11.0	0.9	37.7	16.4	30.9	27.9	10.2	22.0
09 <sup>4th</sup> -10 <sup>4th</sup>	29.7	34.5	31.4	-96.7	-98.0	-97.1	11.9	17.5	0.7	12.7	18.5	8.3	15.4	15.1	10.6	13.7
10 <sup>1st</sup> -11 <sup>1st</sup>	13.6	4.2	9.8	26.2	-2.9	15.0	11.6	30.9	-4.7	19.5	27.5	4.7	21.6	25.2	2.1	18.0
10 <sup>4th</sup> -11 <sup>1st</sup>	-57.3	-53.3	-55.9	5238.5	8200.0	5935.3	-32.5	24.8	27.5	25.4	5.5	-25.0	-3.3	-6.7	-23.8	-12.1
11 <sup>1st</sup> -11 <sup>2nd</sup>	34.9	21.5	29.8	-11.4	-12.0	-11.6	15.4	-32.3	-28.7	-31.4	2.5	25.0	7.5	1.3	11.7	4.1
11 <sup>2nd</sup> -11 <sup>3rd</sup>	7.2	-16.0	-1.0	4.4	-3.4	1.9	-0.3	29.9	6.6	23.7	11.1	20.0	13.4	11.5	5.3	9.7
11 <sup>3rd</sup> -11 <sup>4th</sup>	92.1	138.8	106.2	-99.4	-99.3	-99.4	50.0	-13.4	-2.5	-11.0	-4.0	0.6	-2.7	8.1	24.9	12.8
11 <sup>4th</sup> -12 <sup>1st</sup>	-41.9	-43.7	-42.5	275.0	50.0	200.0	-42.2	27.8	44.4	32.0	-18.1	-36.7	-23.4	-22.9	-34.1	-26.4
11 <sup>2nd</sup> -12 <sup>2nd</sup>	11.3	9.9	10.8	8.3	6.2	7.6	9.9	-2.8	8.5	0.2	20.9	40.0	25.9	15.2	24.5	17.9
12 <sup>1st</sup> -12 <sup>2nd</sup>	-6.9	-2.7	-5.5	4340.0	10233.3	5322.2	27.3	-32.4	-27.6	-31.1	38.5	83.0	49.0	23.8	43.7	29.3

Chart 1: Arrivals by category 2<sup>nd</sup> quarter 2012

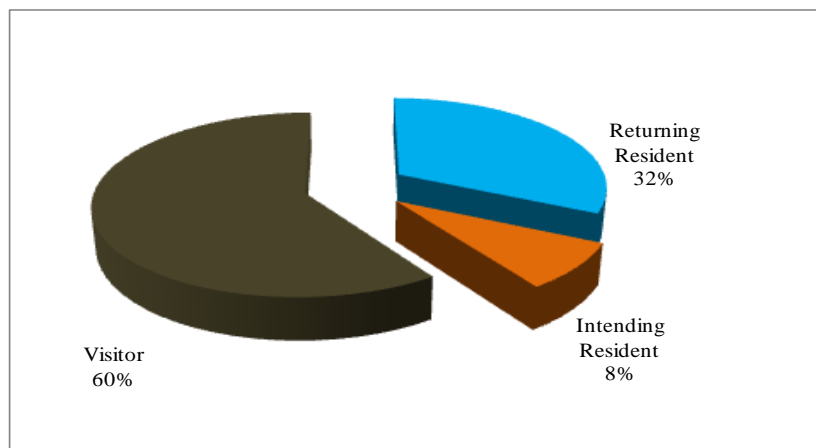


Table 2: Visitor Arrivals by Country of Residence by year by quarter: 2<sup>nd</sup> Quarter 2012

Country of Usual Residence	2008				2009					2010					2011					2012	
	Q2	Q3	Q4	Total	Q1	Q2	Q3	Q4	Total	Q1	Q2	Q3	Q4	Total	Q1	Q2	Q3	Q4	Total	Q1	Q2
Australia	1,971	2,184	1,967	7,413	1,952	2,361	2,354	2,235	8,902	2,087	2,544	3,362	2,758	10,751	2,569	2,763	3,042	3,018	11,392	2,238	2,963
PNG	243	234	248	906	254	260	228	356	1,098	305	248	339	469	1,361	443	479	589	546	2,057	431	602
US	279	336	292	1,105	177	263	345	249	1,034	127	236	287	212	862	188	243	368	241	1,040	183	356
NZ	256	318	357	1,097	363	324	379	298	1,364	274	335	647	454	1,710	385	433	479	427	1,724	285	545
UK	94	137	164	457	112	111	121	75	419	82	108	141	101	432	78	110	101	91	380	81	84
Japan	92	172	181	589	192	142	159	380	873	166	95	151	177	589	145	106	229	161	641	162	112
Germany	14	38	53	124	37	15	25	23	100	24	33	26	18	101	22	26	38	25	111	22	40
Canada	24	29	43	115	23	20	21	24	88	32	22	25	34	113	51	30	55	56	192	29	25
Oth.Pacific	417	242	332	1,156	312	213	281	144	950	167	125	123	170	585	185	185	170	223	763	101	811
Vanuatu	119	137	142	518	86	72	65	85	308	48	86	126	145	405	125	103	100	185	513	121	148
Hong Kong	6	15	2	57	3	9	5	-	17	10	-	23	5	38	12	12	22	84	130	14	20
Fiji	203	239	184	787	225	257	247	188	917	206	278	273	234	991	262	327	285	330	1,204	300	510
Other Asia	356	296	294	1,249	319	447	326	317	1,409	503	477	509	336	1,825	487	523	562	484	2,056	500	544
Netherlands	5	7	19	37	14	12	10	15	51	11	9	16	17	53	18	13	20	13	64	12	11
Oth.Europe	79	128	105	386	126	57	100	91	374	78	63	100	66	307	60	62	63	61	246	76	74
France	20	36	25	91	19	6	29	27	81	12	24	24	22	82	10	20	22	8	60	24	19
Italy	5	17	11	37	13	4	22	27	66	4	3	13	19	39	13	17	20	30	80	13	12
Oth.Country	18	53	53	140	46	43	65	55	209	74	68	77	58	277	66	53	79	90	288	59	53
<b>Total</b>	<b>4,201</b>	<b>4,618</b>	<b>4,472</b>	<b>16,264</b>	<b>4,273</b>	<b>4,616</b>	<b>4,782</b>	<b>4,589</b>	<b>18,260</b>	<b>4,210</b>	<b>4,754</b>	<b>6,262</b>	<b>5,295</b>	<b>20,521</b>	<b>5,119</b>	<b>5,505</b>	<b>6,244</b>	<b>6,073</b>	<b>22,941</b>	<b>4,651</b>	<b>6,929</b>
Percentage																					
Australia	46.9	47.3	44.0	45.6	45.7	51.1	49.2	48.7	48.8	49.6	53.5	53.7	52.1	52.4	50.2	50.2	48.7	49.7	49.7	48.1	42.8
PNG	5.8	5.1	5.5	5.6	5.9	5.6	4.8	7.8	6.0	7.2	5.2	5.4	8.9	6.6	8.7	8.7	9.4	9.0	9.0	9.3	8.7
US	6.6	7.3	6.5	6.8	4.1	5.7	7.2	5.4	5.7	3.0	5.0	4.6	4.0	4.2	3.7	4.4	5.9	4.0	4.5	3.9	5.1
NZ	6.1	6.9	8.0	6.7	8.5	7.0	7.9	6.5	7.5	6.5	7.0	10.3	8.6	8.3	7.5	7.9	7.7	7.0	7.5	6.1	7.9
UK	2.2	3.0	3.7	2.8	2.6	2.4	2.5	1.6	2.3	1.9	2.3	2.3	1.9	2.1	1.5	2.0	1.6	1.5	1.7	1.7	1.2
Japan	2.2	3.7	4.0	3.6	4.5	3.1	3.3	8.3	4.8	3.9	2.0	2.4	3.3	2.9	2.8	1.9	3.7	2.7	2.8	3.5	1.6
Germany	0.3	0.8	1.2	0.8	0.9	0.3	0.5	0.5	0.5	0.6	0.7	0.4	0.3	0.5	0.4	0.5	0.6	0.4	0.5	0.5	0.6
Canada	0.6	0.6	1.0	0.7	0.5	0.4	0.4	0.5	0.5	0.8	0.5	0.4	0.6	0.6	1.0	0.5	0.9	0.9	0.8	0.6	0.4
Oth.Pacific	9.9	5.2	7.4	7.1	7.3	4.6	5.9	3.1	5.2	4.0	2.6	2.0	3.2	2.9	3.6	3.4	2.7	3.7	3.3	2.2	11.7
Vanuatu	2.8	3.0	3.2	3.2	2.0	1.6	1.4	1.9	1.7	1.1	1.8	2.0	2.7	2.0	2.4	1.9	1.6	3.0	2.2	2.6	2.1
Hong Kong	0.1	0.3	-	0.4	0.1	0.2	0.1	0.0	0.1	0.2	-	0.4	0.1	0.2	0.2	0.2	0.4	1.4	0.6	0.3	0.3
Fiji	4.8	5.2	4.1	4.8	5.3	5.6	5.2	4.1	5.0	4.9	5.8	4.4	4.4	4.8	5.1	5.9	4.6	5.4	5.2	6.5	7.4
Other Asia	8.5	6.4	6.6	7.7	7.5	9.7	6.8	6.9	7.7	11.9	10.0	8.1	6.3	8.9	9.5	9.5	9.0	8.0	9.0	10.8	7.9
Netherlands	0.1	0.2	0.4	0.2	0.3	0.3	0.2	0.3	0.3	0.3	0.2	0.3	0.3	0.3	0.4	0.2	0.3	0.2	0.3	0.3	0.2
Oth.Europe	1.9	2.8	2.3	2.4	2.9	1.2	2.1	2.0	2.0	1.9	1.3	1.6	1.2	1.5	1.2	1.1	1.0	1.0	1.1	1.6	1.1
France	0.5	0.8	0.6	0.6	0.4	0.1	0.6	0.6	0.4	0.3	0.5	0.4	0.4	0.4	0.2	0.4	0.4	0.1	0.3	0.5	0.3
Italy	0.1	0.4	0.2	0.2	0.3	0.1	0.5	0.6	0.4	0.1	0.1	0.2	0.4	0.2	0.3	0.3	0.3	0.5	0.3	0.3	0.2
Oth.Country	0.4	1.1	1.2	0.9	1.1	0.9	1.4	1.2	1.1	1.8	1.4	1.2	1.1	1.3	1.3	1.0	1.3	1.5	1.3	1.3	0.8
<b>Total</b>	<b>100</b>	<b>100</b>	<b>100</b>	<b>100</b>	<b>100</b>	<b>100</b>	<b>100</b>	<b>100</b>	<b>100</b>	<b>100</b>	<b>100</b>	<b>100</b>	<b>100</b>	<b>100</b>	<b>100</b>	<b>100</b>	<b>100</b>	<b>100</b>	<b>100</b>	<b>100</b>	<b>100</b>

Chart 2: Visitors Arrival by Country of residence by quarter, 2<sup>nd</sup> quarter 2012

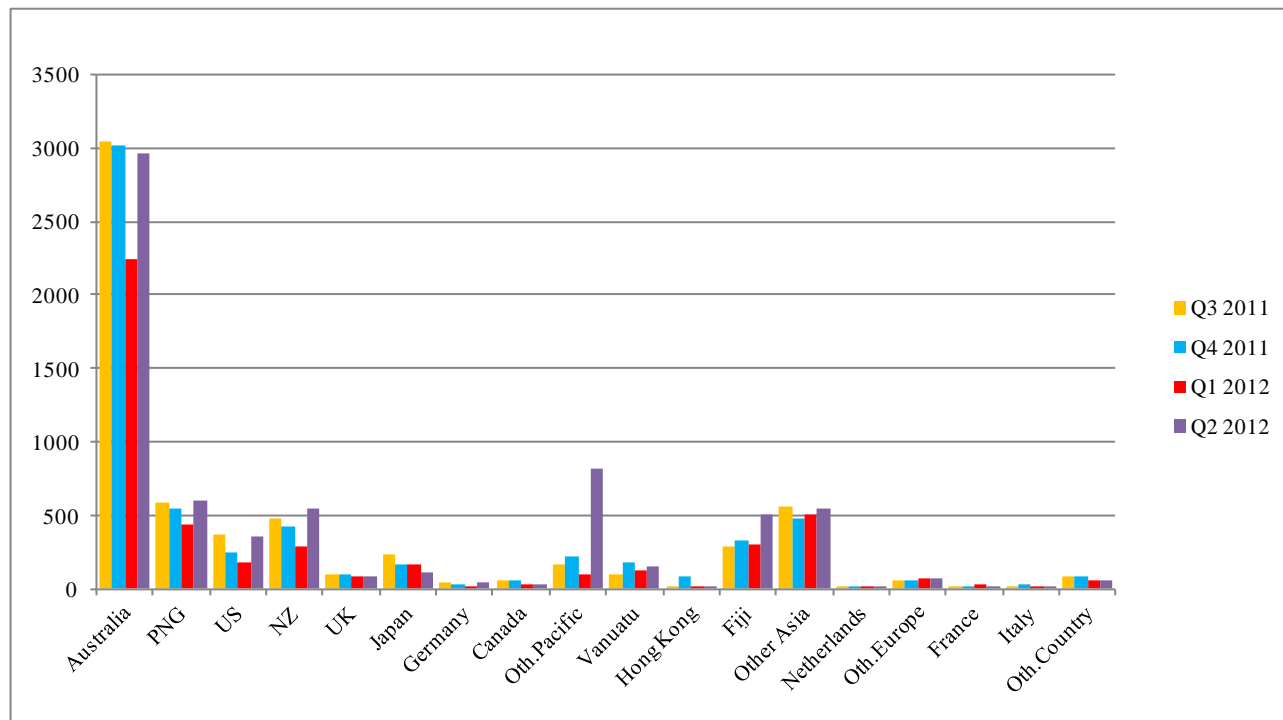


Table 3: Visitor Arrivals by Month: 2006 – 2<sup>nd</sup> Quarter 2012

Month	2006	2007	2008	2009	2010	2011	2012
January	952	546	889	1,602	1,235	1,600	1,383
February	838	1,020	1,282	1,422	1,209	1,658	1,591
March	972	1,251	802	1,249	1,766	1,861	1,677
April	994	1,452	1,388	1,499	1,820	1,736	1,839
May	858	1,137	1,261	1,393	1,137	1,760	1,968
June	1,289	1,265	1,552	1,724	1,797	2,009	3,122
July	865	822	1,692	1,603	2,264	2,185	
August	892	1,299	1,469	1,520	1,845	1,900	
September	681	1,299	1,457	1,659	2,153	2,159	
October	942	1,260	1,399	1,709	1,813	1,931	
November	1,118	1,246	1,545	1,475	1,624	2,195	
December	1,081	1,151	1,528	1,405	1,858	1,947	
<b>Total</b>	<b>11,482</b>	<b>13,748</b>	<b>16,264</b>	<b>18,260</b>	<b>20,521</b>	<b>22,941</b>	<b>11,580</b>
Percentage							
January	8.3	4.0	5.5	8.8	5.5	7.0	11.9
February	7.3	7.4	7.9	7.8	5.4	7.2	13.7
March	8.5	9.1	4.9	6.8	7.8	8.1	14.5
April	8.7	10.6	8.5	8.2	8.1	7.6	15.9
May	7.5	8.3	7.8	7.6	5.0	7.7	17.0
June	11.2	9.2	9.5	9.4	8.0	8.8	27.0
July	7.5	6.0	10.4	8.8	10.0	9.5	
August	7.8	9.4	9.0	8.3	8.2	8.3	
September	5.9	9.4	9.0	9.1	9.6	9.4	
October	8.2	9.2	8.6	9.4	8.0	8.4	
November	9.7	9.1	9.5	8.1	7.2	9.6	
December	9.4	8.4	9.4	7.7	8.2	8.5	
<b>Total</b>	<b>100</b>	<b>100.0</b>	<b>100.0</b>	<b>100.0</b>	<b>100.0</b>	<b>100.0</b>	<b>100.0</b>

Chart 3: Visitors Arrival by month, 2009 – 2<sup>nd</sup> quarter 2012

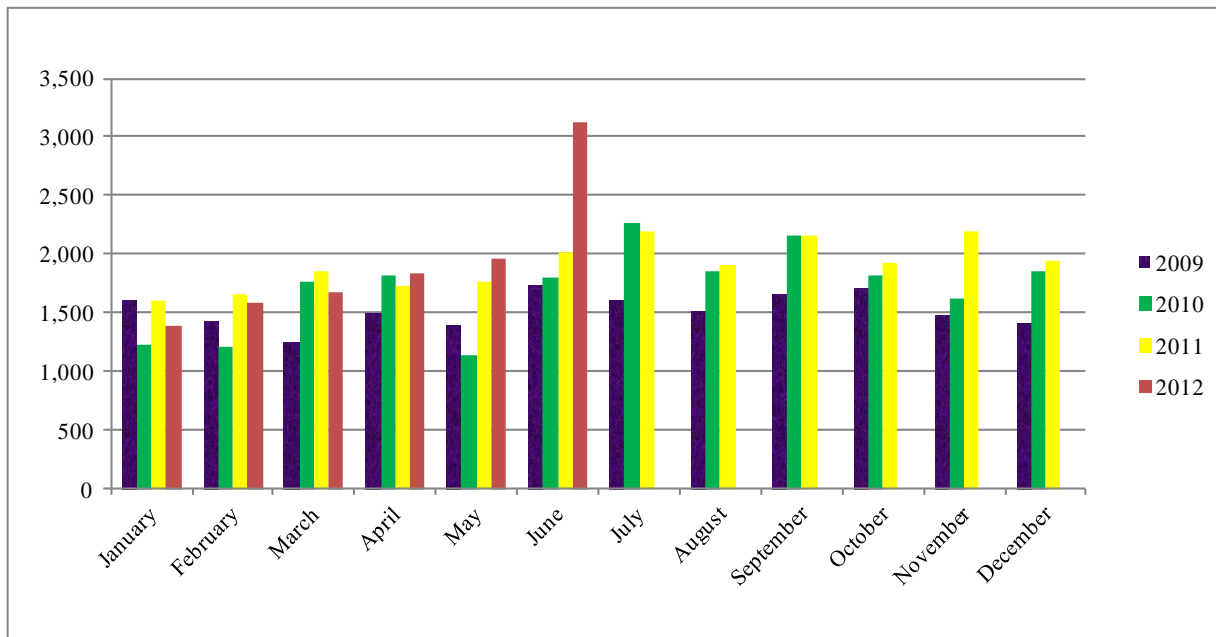




Table 4: Visitors, classified as tourists by Country of residence by year, quarter and average length of stay: 3<sup>rd</sup> Quarter 2009 – 2<sup>nd</sup> Quarter 2012

Country of Usual Residence	2009				2010								2011								2012			
	Quarter 3		Quarter 4		Quarter 1		Quarter 2		Quarter 3		Quarter 4		Quarter 1		Quarter 2		Quarter 3		Quarter 4		Quarter 1		Quarter 2	
	tourist	day	tourist	day	tourist	day	tourist	day	tourist	day	tourist	day	tourist	day	tourist	day	tourist	day	tourist	day	tourist	day	tourist	day
Australia	878	14	724	15	558	13	756	11	1,010	12	854	15	611	14	872	13	1,034	15	915	20	511	12	891	13
PNG	35	13	62	33	46	22	41	11	36	15	60	27	34	13	53	15	72	16	67	30	23	14	54	13
US	163	13	141	14	46	16	122	11	166	12	114	13	91	11	104	16	191	13	102	13	65	10	182	12
NZ	99	17	41	23	17	18	62	14	140	14	65	19	29	23	56	15	102	17	70	20	24	11	69	13
UK	52	28	37	25	24	18	48	19	72	23	54	13	26	19	49	25	42	23	34	16	25	18	28	32
Japan	84	11	286	5	45	8	23	5	56	12	94	6	45	12	24	10	95	15	51	7	53	7	41	7
Germany	15	14	18	27	17	16	23	13	13	17	13	14	15	35	12	13	24	17	17	12	14	18	21	20
Canada	9	29	11	13	14	18	8	33	7	12	11	14	27	17	8	23	14	14	28	15	8	15	10	22
Oth.Pacific	84	14	29	18	22	16	8	7	16	12	23	27	19	15	14	12	15	16	21	23	11	14	38	14
Vanuatu	-	-	-	10	4	9	9	15	10	18	12	14	20	15	13	14	20	17	27	25	21	7	15	10
Hong Kong	-	-	-	20	3	15	-	-	8	10	2	3	5	5	7	8	11	12	23	19	3	18	6	16
Fiji	8	7	19	-	9	23	10	25	15	31	21	29	15	13	23	18	26	20	20	21	22	19	29	26
Oth.Asia	78	22	61	30	78	20	106	19	126	13	107	23	127	20	103	25	142	22	81	16	107	22	101	22
Netherlands	6	18	10	15	5	8	4	15	6	15	5	7	6	34	5	18	9	20	10	20	5	21	7	27
Oth.Europe	50	12	53	19	48	22	33	17	72	16	34	16	35	18	32	14	37	18	26	18	43	14	43	14
France	11	19	16	14	6	12	13	23	9	16	8	21	4	28	5	17	15	20	4	12	14	16	2	25
Italy	19	14	15	43	2	12	1	8	11	17	5	52	5	22	5	10	6	18	18	19	4	21	1	30
Oth.Country	23	12	12	11	21	22	15	9	24	14	14	18	23	12	14	21	26	16	44	16	14	9	9	18
Total	1,614	15	1,550	15	965	15	1,282	12	1,797	13	1,496	18	1,137	16	1,399	15	1,881	16	1,558	15	967	13	1,547	14

Chart 4: Tourist Arrivals by Country of Residence, 2<sup>nd</sup> Quarter 2012

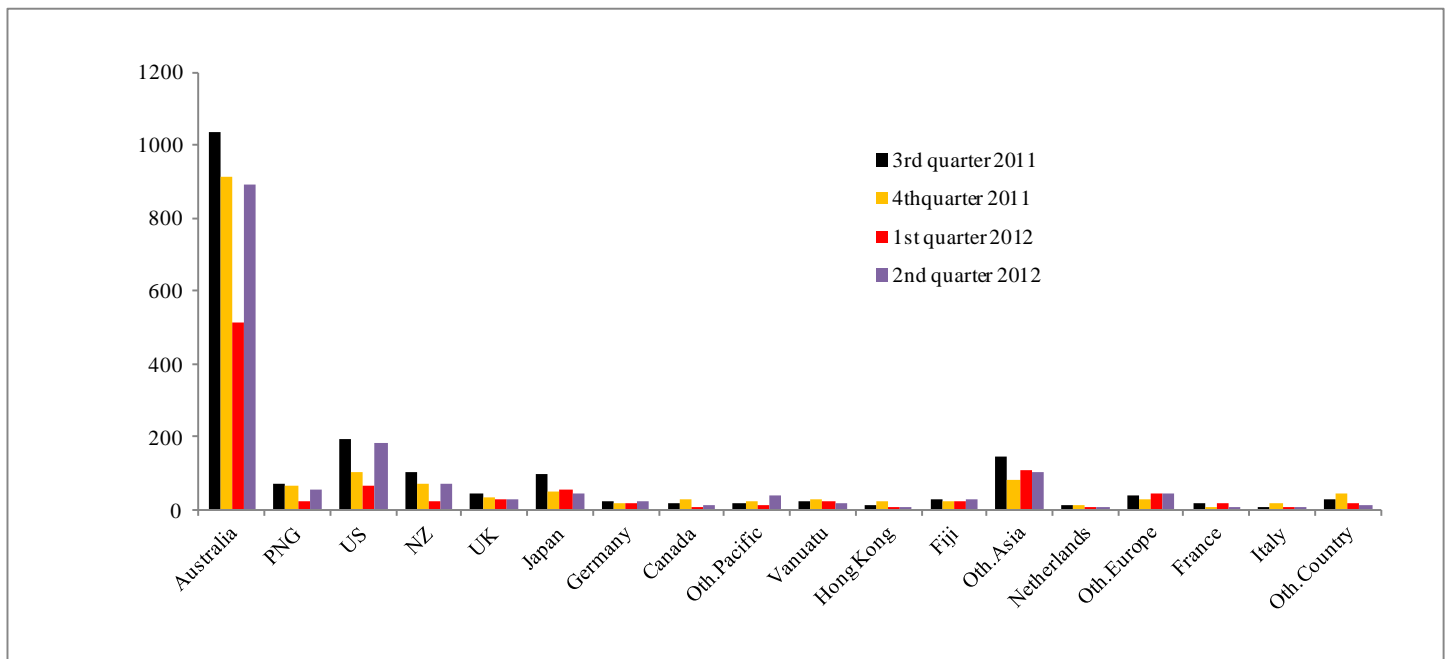


Table 5: Visitor Arrivals by Country of Residence by Purpose of Visit by sex: 2<sup>nd</sup> Quarter 2012

Country of Usual Residence	Business & Conference			Holiday & Vocation			Transit & Stopover			Visit friends/Relatives			Other			Total		
	M	F	T	M	F	T	M	F	T	M	F	T	M	F	T	M	F	All
Australia	589	160	749	501	371	872	15	4	19	214	194	408	690	225	915	2,009	954	2,963
PNG	164	45	209	29	16	45	5	4	9	22	22	44	259	36	295	479	123	602
US	50	19	69	108	67	175	5	2	7	12	9	21	52	32	84	227	129	356
NZ	183	54	237	37	22	59	10	-	10	31	21	52	129	58	187	390	155	545
UK	24	9	33	19	9	28	-	-	-	2	3	5	11	7	18	56	28	84
Japan	37	5	42	31	9	40	-	1	1	5	1	6	18	5	23	91	21	112
Germany	5	5	10	15	5	20	1	-	1	-	2	2	6	1	7	27	13	40
Canada	2	-	2	5	5	10	-	-	-	2	2	4	7	2	9	16	9	25
Oth.Pacific	117	56	173	21	13	34	3	1	4	8	1	9	381	210	591	530	281	811
Vanuatu	33	5	38	12	-	12	3	-	3	8	20	28	60	7	67	116	32	148
Hong Kong	4	1	5	5	1	6	-	-	-	3	-	3	3	3	6	15	5	20
Fiji	221	92	313	21	5	26	-	3	3	21	14	35	110	23	133	373	137	510
Oth.Asia	181	15	196	85	9	94	6	1	7	53	11	64	153	30	183	478	66	544
Netherlands	3	-	3	3	4	7	-	-	-	-	-	-	-	1	1	6	5	11
Oth.Europe	9	6	15	28	15	43	-	-	-	3	5	8	5	3	8	45	29	74
France	4	2	6	1	1	2	-	-	-	1	-	1	8	2	10	14	5	19
Italy	2	2	4	1	-	1	-	-	-	1	3	4	3	-	3	7	5	12
Oth.Country	21	3	24	6	3	9	-	-	-	1	1	2	14	4	18	42	11	53
<b>Total</b>	<b>1,649</b>	<b>479</b>	<b>2,128</b>	<b>928</b>	<b>555</b>	<b>1,483</b>	<b>48</b>	<b>16</b>	<b>64</b>	<b>387</b>	<b>309</b>	<b>696</b>	<b>1,909</b>	<b>649</b>	<b>2,558</b>	<b>4,921</b>	<b>2,008</b>	<b>6,929</b>
<b>Percentage</b>																		
Australia	19.9	5.4	25.3	16.9	12.5	29.4	0.5	0.1	0.6	7.2	6.5	13.8	23.3	7.6	30.9	67.8	32.2	100.0
PNG	27.2	7.5	34.7	4.8	2.7	7.5	0.8	0.7	1.5	3.7	3.7	7.3	43.0	6.0	49.0	79.6	20.4	100.0
US	14.0	5.3	19.4	30.3	18.8	49.2	1.4	0.6	2.0	3.4	2.5	5.9	14.6	9.0	23.6	63.8	36.2	100.0
NZ	33.6	9.9	43.5	6.8	4.0	10.8	1.8	-	1.8	5.7	3.9	9.5	23.7	10.6	34.3	71.6	28.4	100.0
UK	28.6	10.7	39.3	22.6	10.7	33.3	-	-	-	2.4	3.6	6.0	13.1	8.3	21.4	66.7	33.3	100.0
Japan	33.0	4.5	37.5	27.7	8.0	35.7	-	0.9	0.9	4.5	0.9	5.4	16.1	4.5	20.5	81.3	18.8	100.0
Germany	12.5	12.5	25.0	37.5	12.5	50.0	2.5	0.0	2.5	-	5.0	5.0	15.0	2.5	17.5	67.5	32.5	100.0
Canada	8.0	-	8.0	20.0	20.0	40.0	-	-	-	8.0	8.0	16.0	28.0	8.0	36.0	64.0	36.0	100.0
Oth.Pacific	14.4	6.9	21.3	2.6	1.6	4.2	0.4	0.1	0.5	1.0	0.1	1.1	47.0	25.9	72.9	65.4	34.6	100.0
Vanuatu	22.3	3.4	25.7	8.1	-	8.1	2.0	-	2.0	5.4	13.5	18.9	40.5	4.7	45.3	78.4	21.6	100.0
Hong Kong	20.0	5.0	25.0	25.0	5.0	30.0	-	-	-	15.0	0.0	15.0	15.0	15.0	30.0	75.0	25.0	100.0
Fiji	43.3	18.0	61.4	4.1	1.0	5.1	-	0.6	0.6	4.1	2.7	6.9	21.6	4.5	26.1	73.1	26.9	100.0
Oth.Asia	33.3	2.8	36.0	15.6	1.7	17.3	1.1	0.2	1.3	9.7	2.0	11.8	28.1	5.5	33.6	87.9	12.1	100.0
Netherlands	27.3	0.0	27.3	27.3	36.4	63.6	-	-	-	-	-	-	0.0	9.1	9.1	54.5	45.5	100.0
Oth.Europe	12.2	8.1	20.3	37.8	20.3	58.1	-	-	-	4.1	6.8	10.8	6.8	4.1	10.8	60.8	39.2	100.0
France	21.1	10.5	31.6	5.3	5.3	10.5	-	-	-	5.3	-	5.3	42.1	10.5	52.6	73.7	26.3	100.0
Italy	16.7	16.7	33.3	8.3	-	8.3	-	-	-	8.3	25.0	33.3	25.0	-	25.0	58.3	41.7	100.0
Oth.Country	39.6	5.7	45.3	11.3	5.7	17.0	-	-	-	1.9	1.9	3.8	26.4	7.5	34.0	79.2	20.8	100.0
<b>Total</b>	<b>23.8</b>	<b>6.9</b>	<b>30.7</b>	<b>13.4</b>	<b>8.0</b>	<b>21.4</b>	<b>0.7</b>	<b>0.2</b>	<b>0.9</b>	<b>5.6</b>	<b>4.5</b>	<b>10.0</b>	<b>27.6</b>	<b>9.4</b>	<b>36.9</b>	<b>71.0</b>	<b>29.0</b>	<b>100.0</b>

Chart 5: Visitors Arrival by Country of Residence by Purpose of Visit, 2<sup>nd</sup> quarter 2012

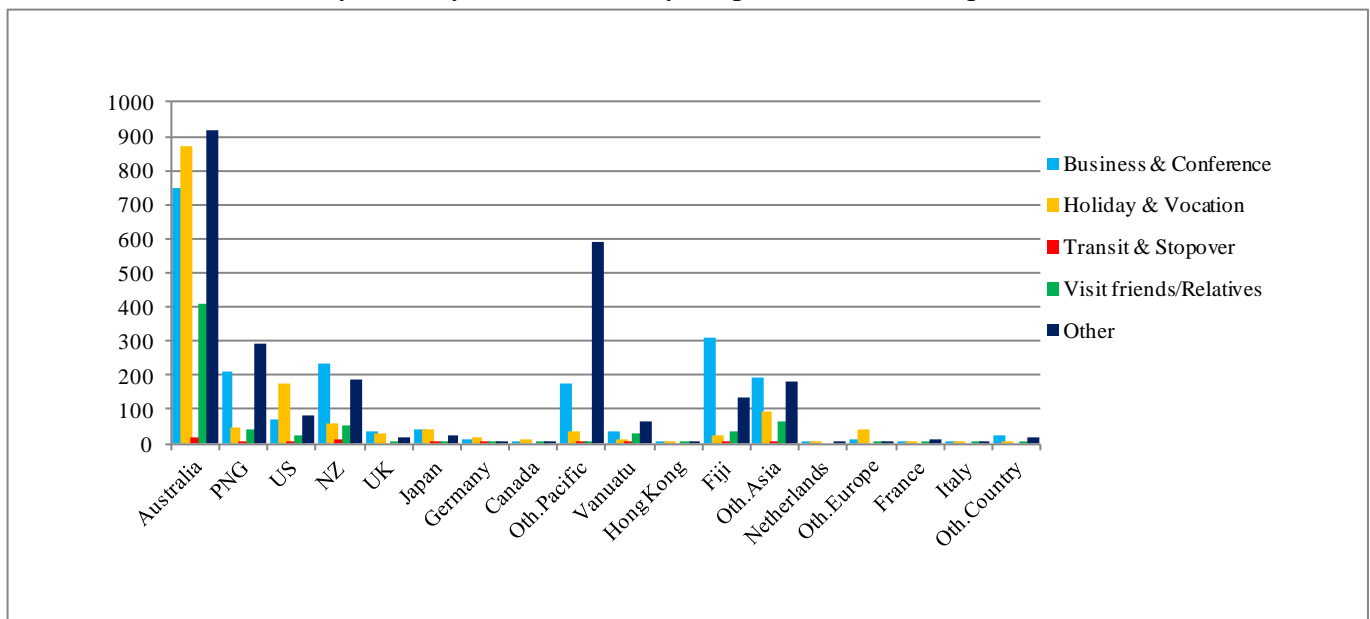


Table 6: Visitor Arrivals by Country of Residence by Age Groups by Sex: 2<sup>nd</sup> Quarter 2012

Country of Usual Residence	Age-Group																		Total		
	0-14		15-24		25-34		35-44		45-54		55-64		65+		Not Stated		M	F	All		
	M	F	M	F	M	F	M	F	M	F	M	F	M	F	M	F	M	F	All		
Australia	49	61	163	118	297	182	428	157	463	185	379	145	150	59	80	47	2,009	954	2,963		
PNG	5	11	39	14	98	26	138	30	128	24	42	7	8	-	21	11	479	123	602		
US	4	7	17	14	18	17	37	20	51	23	47	24	40	19	13	5	227	129	356		
NZ	6	8	31	17	61	32	95	33	99	26	58	17	21	7	19	15	390	155	545		
UK	1	-	13	4	9	12	6	-	9	3	13	7	3	1	2	1	56	28	84		
Japan	-	-	1	-	11	9	29	6	18	1	19	3	11	-	2	2	91	21	112		
Germany	-	-	-	2	2	3	4	3	9	4	4	-	8	1	-	-	27	13	40		
Canada	-	-	2	3	2	3	6	-	2	1	1	2	3	-	-	-	16	9	25		
Oth.Pacific	15	14	119	86	128	38	86	44	89	50	53	26	15	9	25	14	530	281	811		
Vanuatu	2	6	13	2	32	3	27	12	22	4	6	4	4	1	10	-	116	32	148		
Hong Kong	-	-	-	1	2	1	2	3	4	-	4	-	1	-	2	-	15	5	20		
Fiji	2	4	44	16	78	30	96	29	80	34	47	15	8	2	18	7	373	137	510		
Oth.Asia	2	-	26	5	101	24	126	16	119	12	73	4	9	1	22	4	478	66	544		
Netherlands	-	-	-	-	1	2	2	2	1	-	2	1	-	-	-	-	6	5	11		
Oth.Europe	1	2	1	2	12	8	6	1	15	8	4	4	6	4	-	-	45	29	74		
France	-	-	1	1	4	4	1	-	4	-	3	-	-	-	1	-	14	5	19		
Italy	-	-	-	-	2	1	1	1	2	1	1	-	1	2	-	-	7	5	12		
Oth.Country	1	-	-	-	13	3	7	2	12	1	6	3	1	-	2	2	42	11	53		
Total	88	113	470	285	871	398	1097	359	1127	377	762	262	289	106	217	108	4,921	2,008	6,929		
Percentage																					
Australia	1.7	2.1	5.5	4.0	10.0	6.1	14.4	5.3	15.6	6.2	12.8	4.9	5.1	2.0	2.7	1.6	67.8	32.2	100.0		
PNG	0.8	1.8	6.5	2.3	16.3	4.3	22.9	5.0	21.3	4.0	7.0	1.2	1.3	-	3.5	1.8	79.6	20.4	100.0		
US	1.1	2.0	4.8	3.9	5.1	4.8	10.4	5.6	14.3	6.5	13.2	6.7	11.2	5.3	3.7	1.4	63.8	36.2	100.0		
NZ	1.1	1.5	5.7	3.1	11.2	5.9	17.4	6.1	18.2	4.8	10.6	3.1	3.9	1.3	3.5	2.8	71.6	28.4	100.0		
UK	1.2	-	15.5	4.8	10.7	14.3	7.1	-	10.7	3.6	15.5	8.3	3.6	1.2	2.4	1.2	66.7	33.3	100.0		
Japan	-	-	0.9	-	9.8	8.0	25.9	5.4	16.1	0.9	17.0	2.7	9.8	-	1.8	1.8	81.3	18.8	100.0		
Germany	-	-	-	5.0	5.0	7.5	10.0	7.5	22.5	10.0	10.0	-	20.0	2.5	-	-	67.5	32.5	100.0		
Canada	-	-	8.0	12.0	8.0	12.0	24.0	-	8.0	4.0	4.0	8.0	12.0	-	-	-	64.0	36.0	100.0		
Oth.Pacific	1.8	1.7	14.7	10.6	15.8	4.7	10.6	5.4	11.0	6.2	6.5	3.2	1.8	1.1	3.1	1.7	65.4	34.6	100.0		
Vanuatu	1.4	4.1	8.8	1.4	21.6	2.0	18.2	8.1	14.9	2.7	4.1	2.7	2.7	0.7	6.8	-	78.4	21.6	100.0		
Hong Kong	-	-	-	5.0	10.0	5.0	10.0	15.0	20.0	-	20.0	-	5.0	-	10.0	-	75.0	25.0	100.0		
Fiji	0.4	0.8	8.6	3.1	15.3	5.9	18.8	5.7	15.7	6.7	9.2	2.9	1.6	0.4	3.5	1.4	73.1	26.9	100.0		
Oth.Asia	0.4	-	4.8	0.9	18.6	4.4	23.2	2.9	21.9	2.2	13.4	0.7	1.7	0.2	4.0	0.7	87.9	12.1	100.0		
Netherlands	-	-	-	-	9.1	18.2	18.2	18.2	9.1	-	18.2	9.1	-	-	-	-	54.5	45.5	100.0		
Oth.Europe	1.4	2.7	1.4	2.7	16.2	10.8	8.1	1.4	20.3	10.8	5.4	5.4	8.1	5.4	-	-	60.8	39.2	100.0		
France	-	-	5.3	5.3	21.1	21.1	5.3	-	21.1	-	15.8	-	-	-	5.3	-	73.7	26.3	100.0		
Italy	-	-	-	-	16.7	8.3	8.3	8.3	16.7	8.3	8.3	-	8.3	16.7	-	-	58.3	41.7	100.0		
Oth.Country	1.9	-	-	-	24.5	5.7	13.2	3.8	22.6	1.9	11.3	5.7	1.9	-	3.8	3.8	79.2	20.8	100.0		
Total	1.3	1.6	6.8	4.1	12.6	5.7	15.8	5.2	16.3	5.4	11.0	3.8	4.2	1.5	3.1	1.6	71.0	29.0	100.0		

Chart 6: Visitor Arrivals by Age group category by sex, 2<sup>nd</sup> quarter 2012

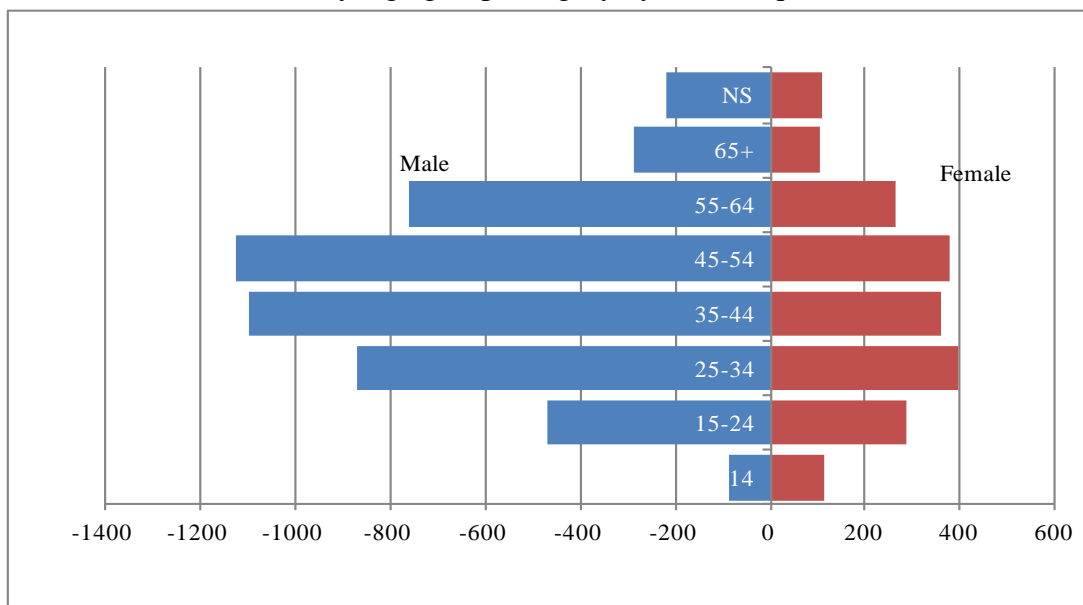


Table 7: Visitor Arrivals by Country of Residence by Occupation and Sex: 2<sup>nd</sup> Quarter 2012

Country of Usual Residence	Professional and Technical		Administration and Managerial		Clerical & Related Work		Sales Worker		Service Worker		Agriculture Forestry Fishery		Production & Related Work		Other		No Work		Total		
	M	F	M	F	M	F	M	F	M	F	M	F	M	F	M	F	M	F	M	F	All
Australia	721	388	257	79	12	18	15	2	139	83	28	4	143	2	572	302	122	76	2,009	954	2,963
PNG	140	41	48	8	4	3	1	-	6	13	17	4	27	1	225	44	11	9	479	123	602
US	100	57	7	4	-	2	2	2	3	5	-	-	4	1	79	28	32	30	227	129	356
NZ	116	64	72	14	-	1	3	-	19	10	2	-	12	-	146	56	20	10	390	155	545
UK	22	11	6	3	-	-	-	-	1	1	-	-	1	-	23	10	3	3	56	28	84
Japan	31	4	6	-	1	1	4	2	2	1	-	-	1	-	36	10	10	3	91	21	112
Germany	8	5	-	-	-	-	-	-	-	1	-	-	-	-	14	7	5	-	27	13	40
Canada	7	4	2	-	-	-	-	-	-	2	-	-	-	-	5	2	2	1	16	9	25
Oth.Pacific	157	92	12	6	1	7	4	1	34	7	-	-	9	1	216	113	97	54	530	281	811
Vanuatu	32	11	7	-	-	2	2	-	6	7	-	2	3	-	58	8	8	2	116	32	148
Hong Kong	2	1	3	-	-	-	-	-	-	-	-	-	-	-	7	2	3	2	15	5	20
Fiji	115	48	34	4	-	2	7	1	28	3	29	1	5	1	141	72	14	5	373	137	510
Oth.Asia	73	8	64	5	3	1	69	2	6	9	13	1	29	-	169	32	52	8	478	66	544
Netherlands	1	3	-	-	-	-	1	-	-	-	-	-	-	-	4	2	-	-	6	5	11
Oth.Europe	14	10	2	2	-	-	3	-	-	2	-	-	-	-	22	8	4	7	45	29	74
France	5	1	1	-	-	-	-	-	1	-	-	-	-	-	6	4	1	-	14	5	19
Italy	3	-	-	-	-	-	-	-	-	-	-	-	-	-	2	3	2	2	7	5	12
Oth.Country	14	6	11	-	-	-	-	-	-	1	-	-	1	-	15	4	1	-	42	11	53
<b>Total</b>	<b>1561</b>	<b>754</b>	<b>532</b>	<b>125</b>	<b>21</b>	<b>37</b>	<b>111</b>	<b>10</b>	<b>245</b>	<b>145</b>	<b>89</b>	<b>12</b>	<b>235</b>	<b>6</b>	<b>1740</b>	<b>707</b>	<b>387</b>	<b>212</b>	<b>4,921</b>	<b>2,008</b>	<b>6,929</b>
	Percentage																				
Australia	24.3	13.1	8.7	2.7	0.4	0.6	0.5	0.1	4.7	2.8	0.9	0.1	4.8	0.1	19.3	10.2	4.1	2.6	67.8	32.2	100.0
PNG	23.3	6.8	8.0	1.3	0.7	0.5	0.2	-	1.0	2.2	2.8	0.7	4.5	0.2	37.4	7.3	1.8	1.5	79.6	20.4	100.0
US	28.1	16.0	2.0	1.1	-	0.6	0.6	0.6	0.8	1.4	-	-	1.1	0.3	22.2	7.9	9.0	8.4	63.8	36.2	100.0
NZ	21.3	11.7	13.2	2.6	-	0.2	0.6	-	3.5	1.8	0.4	-	2.2	-	26.8	10.3	3.7	1.8	71.6	28.4	100.0
UK	26.2	13.1	7.1	3.6	-	-	-	-	1.2	1.2	-	-	1.2	-	27.4	11.9	3.6	3.6	66.7	33.3	100.0
Japan	27.7	3.6	5.4	-	0.9	0.9	3.6	1.8	1.8	0.9	-	-	0.9	-	32.1	8.9	8.9	2.7	81.3	18.8	100.0
Germany	20.0	12.5	-	-	-	-	-	-	-	2.5	-	-	-	-	35.0	17.5	12.5	-	67.5	32.5	100.0
Canada	28.0	16.0	8.0	-	-	-	-	-	-	8.0	-	-	-	-	20.0	8.0	8.0	4.0	64.0	36.0	100.0
Oth.Pacific	19.4	11.3	1.5	0.7	0.1	0.9	0.5	0.1	4.2	0.9	-	-	1.1	0.1	26.6	13.9	12.0	6.7	65.4	34.6	100.0
Vanuatu	21.6	7.4	4.7	-	-	1.4	1.4	-	4.1	4.7	-	1.4	2.0	-	39.2	5.4	5.4	1.4	78.4	21.6	100.0
Hong Kong	10.0	5.0	15.0	-	-	-	-	-	-	-	-	-	-	-	35.0	10.0	15.0	10.0	75.0	25.0	100.0
Fiji	22.5	9.4	6.7	0.8	-	0.4	1.4	0.2	5.5	0.6	5.7	0.2	1.0	0.2	27.6	14.1	2.7	1.0	73.1	26.9	100.0
Oth.Asia	13.4	1.5	11.8	0.9	0.6	0.2	12.7	0.4	1.1	1.7	2.4	0.2	5.3	-	31.1	5.9	9.6	1.5	87.9	12.1	100.0
Netherlands	9.1	27.3	-	-	-	-	9.1	-	-	-	-	-	-	-	36.4	18.2	-	-	54.5	45.5	100.0
Oth.Europe	18.9	13.5	2.7	2.7	-	-	4.1	-	-	2.7	-	-	-	-	29.7	10.8	5.4	9.5	60.8	39.2	100.0
France	26.3	5.3	5.3	-	-	-	-	-	5.3	-	-	-	-	-	31.6	21.1	5.3	-	73.7	26.3	100.0
Italy	25.0	-	-	-	-	-	-	-	-	-	-	-	-	-	16.7	25.0	16.7	16.7	58.3	41.7	100.0
Oth.Country	26.4	11.3	20.8	-	-	-	-	-	-	1.9	-	-	1.9	-	28.3	7.5	1.9	-	79.2	20.8	100.0
<b>Total</b>	<b>22.5</b>	<b>10.9</b>	<b>7.7</b>	<b>1.8</b>	<b>0.3</b>	<b>0.5</b>	<b>1.6</b>	<b>0.1</b>	<b>3.5</b>	<b>2.1</b>	<b>1.3</b>	<b>0.2</b>	<b>3.4</b>	<b>0.1</b>	<b>25.1</b>	<b>10.2</b>	<b>5.6</b>	<b>3.1</b>	<b>71.0</b>	<b>29.0</b>	<b>100.0</b>

Chart 7: Visitors Arrival by occupation by sex, 2<sup>nd</sup> quarter 2012

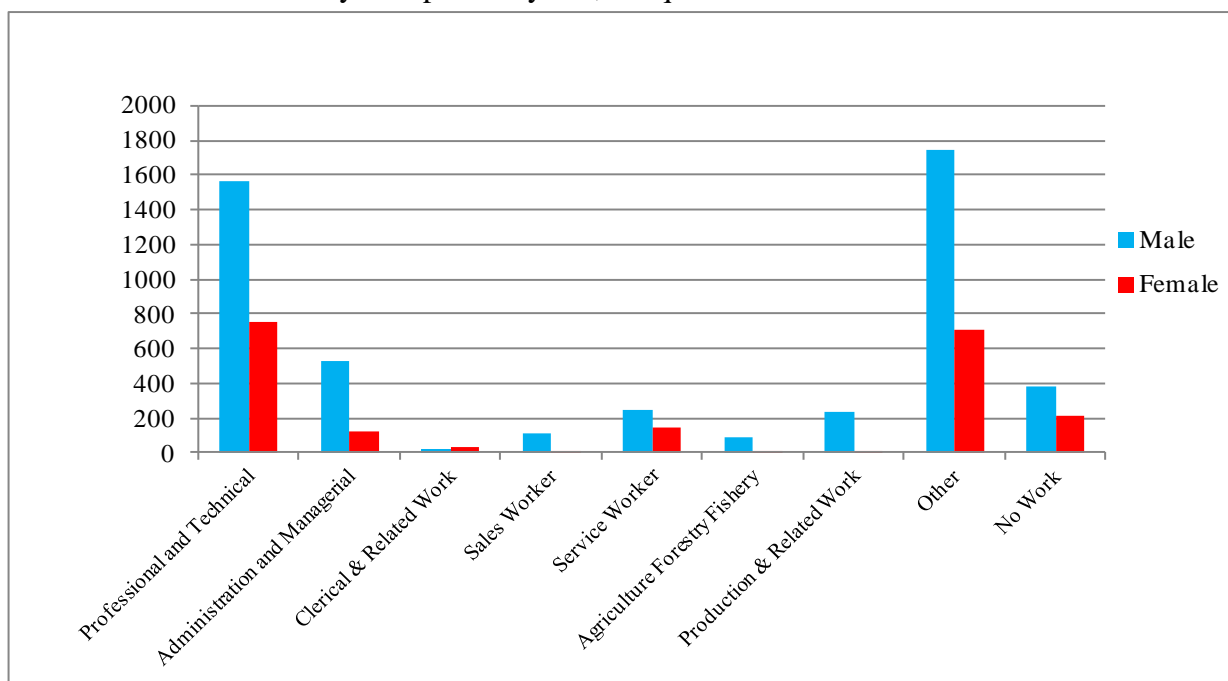
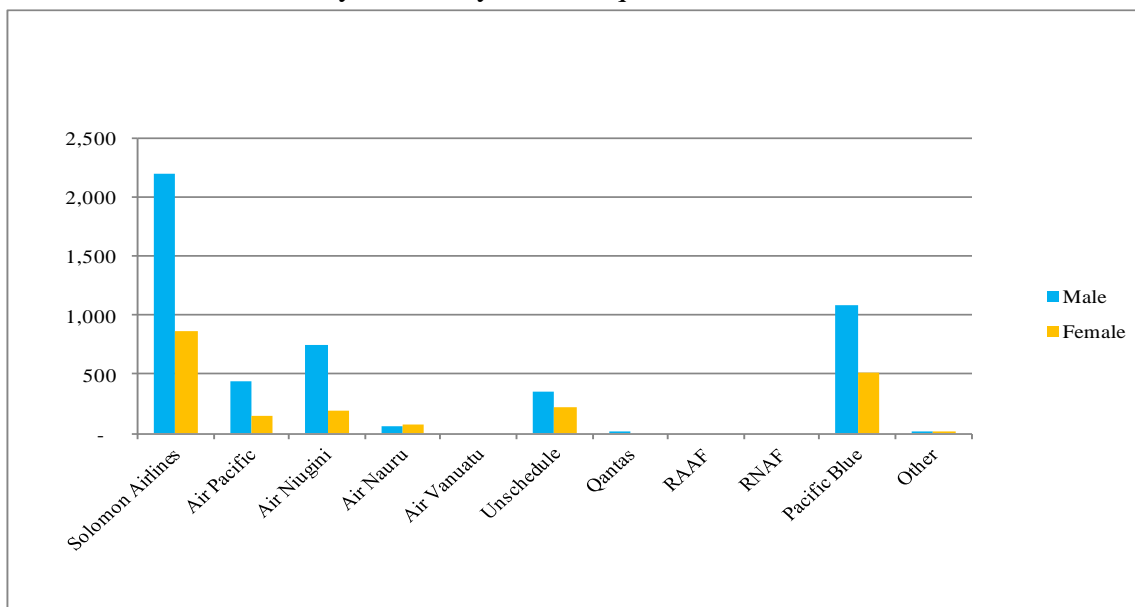


Table 8: Visitor Arrivals by Country of residence by Carrier by Sex: 2<sup>nd</sup> Quarter 2012

Country of Usual Residence	Solomon Airlines		Air Pacific		Air Niugini		Air Nauru		Air Vanuatu		Unschedule		Qantas		RAAF		RNAF		Pacific Blue		Other		Total		
	M	F	M	F	M	F	M	F	M	F	M	F	M	F	M	F	M	F	M	F	M	F	M	F	All
	Australia	1163	550	16	10	50	9	2	-	-	-	63	12	-	-	-	-	-	-	714	373	1	-	2,009	954
PNG	79	37	2	1	357	81	-	-	-	-	4	-	-	-	-	-	-	-	36	4	1	-	479	123	602
US	76	49	67	32	27	13	1	2	-	-	7	4	-	-	-	-	-	-	40	26	9	3	227	129	356
NZ	158	37	15	2	19	2	-	-	-	-	64	53	-	-	-	-	-	-	134	61	-	-	390	155	545
UK	34	18	4	-	5	5	-	-	-	-	-	-	-	-	-	-	-	-	13	5	-	-	56	28	84
Japan	40	14	6	-	39	6	-	-	-	-	1	-	-	-	-	-	-	-	5	-	-	1	91	21	112
Germany	7	9	4	1	5	-	-	-	-	-	8	1	-	-	-	-	-	-	2	1	1	1	27	13	40
Canada	8	8	3	-	-	-	-	-	-	-	-	-	-	-	-	-	-	-	5	1	-	-	16	9	25
Oth.Pacific	169	49	33	7	29	4	54	63	-	-	203	150	-	-	-	-	-	-	42	8	-	-	530	281	811
Vanuatu	23	5	88	26	4	-	-	-	-	-	-	-	-	-	-	-	-	-	1	-	-	1	116	32	148
Hong Kong	7	4	-	-	5	1	-	-	-	-	-	-	-	-	-	-	-	-	3	-	-	-	15	5	20
Fiji	80	30	179	58	101	45	2	2	-	-	2	-	1	-	-	-	-	-	3	2	5	-	373	137	510
Oth.Asia	295	29	9	2	96	12	-	-	-	-	4	3	-	-	-	-	-	-	74	20	-	-	478	66	544
Netherlands	5	4	-	-	-	-	-	-	-	-	-	-	-	-	-	-	-	-	1	1	-	-	6	5	11
Oth.Europe	24	14	5	6	7	6	1	-	-	-	-	-	-	-	-	-	-	-	8	3	-	-	45	29	74
France	9	1	1	-	-	-	-	-	-	-	-	-	-	-	-	-	-	-	4	4	-	-	14	5	19
Italy	5	4	-	-	1	-	-	-	-	-	-	-	-	-	-	-	-	-	1	1	-	-	7	5	12
Oth.Country	26	6	5	-	4	1	-	-	-	-	2	-	-	-	-	-	-	-	5	4	-	-	42	11	53
Total	2,208	868	437	145	749	185	60	67	-	-	358	223	1	-	-	-	-	-	1,091	514	17	6	4,921	2,008	6,929
<b>Percentage</b>																									
Australia	39.3	18.6	0.5	0.3	1.7	0.3	0.1	-	-	-	2.1	0.4	-	-	-	-	-	-	24.1	12.6	-	-	67.8	32.2	100.0
PNG	13.1	6.1	0.3	0.2	59.3	13.5	-	-	-	-	0.7	-	-	-	-	-	-	-	6.0	0.7	0.2	-	79.6	20.4	100.0
US	21.3	13.8	18.8	9.0	7.6	3.7	0.3	0.6	-	-	2.0	1.1	-	-	-	-	-	-	11.2	7.3	2.5	0.8	63.8	36.2	100.0
NZ	29.0	6.8	2.8	0.4	3.5	0.4	-	-	-	-	11.7	9.7	-	-	-	-	-	-	24.6	11.2	-	-	71.6	28.4	100.0
UK	40.5	21.4	4.8	-	6.0	6.0	-	-	-	-	-	-	-	-	-	-	-	-	15.5	6.0	-	-	66.7	33.3	100.0
Japan	35.7	12.5	5.4	-	34.8	5.4	-	-	-	-	0.9	-	-	-	-	-	-	-	4.5	-	-	0.9	81.3	18.8	100.0
Germany	17.5	22.5	10.0	2.5	12.5	-	-	-	-	-	20.0	2.5	-	-	-	-	-	-	5.0	2.5	2.5	2.5	67.5	32.5	100.0
Canada	32.0	32.0	12.0	-	-	-	-	-	-	-	-	-	-	-	-	-	-	-	20.0	4.0	-	-	64.0	36.0	100.0
Oth.Pacific	20.8	6.0	4.1	0.9	3.6	0.5	6.7	7.8	-	-	25.0	18.5	-	-	-	-	-	-	5.2	1.0	-	-	65.4	34.6	100.0
Vanuatu	15.5	3.4	59.5	17.6	2.7	-	-	-	-	-	-	-	-	-	-	-	-	-	0.7	-	-	0.7	78.4	21.6	100.0
Hong Kong	35.0	20.0	-	-	25.0	5.0	-	-	-	-	-	-	-	-	-	-	-	-	15.0	-	-	-	75.0	25.0	100.0
Fiji	15.7	5.9	35.1	11.4	19.8	8.8	0.4	0.4	-	-	0.4	-	-	-	-	-	-	-	0.6	0.4	1.0	-	73.1	26.9	100.0
Oth.Asia	54.2	5.3	1.7	0.4	17.6	2.2	-	-	-	-	0.7	0.6	-	-	-	-	-	-	13.6	3.7	-	-	87.9	12.1	100.0
Netherlands	45.5	36.4	-	-	-	-	-	-	-	-	-	-	-	-	-	-	-	-	9.1	9.1	-	-	54.5	45.5	100.0
Oth.Europe	32.4	18.9	6.8	8.1	9.5	8.1	1.4	-	-	-	-	-	-	-	-	-	-	-	10.8	4.1	-	-	60.8	39.2	100.0
France	47.4	5.3	5.3	-	-	-	-	-	-	-	-	-	-	-	-	-	-	-	21.1	21.1	-	-	73.7	26.3	100.0
Italy	41.7	33.3	-	-	8.3	-	-	-	-	-	-	-	-	-	-	-	-	-	8.3	8.3	-	-	58.3	41.7	100.0
Oth.Country	49.1	11.3	9.4	-	7.5	1.9	-	-	-	-	3.8	-	-	-	-	-	-	-	9.4	7.5	-	-	79.2	20.8	100.0
Total	31.9	12.5	6.3	2.1	10.8	2.7	0.9	1.0	-	-	5.2	3.2	-	-	-	-	-	-	15.7	7.4	0.2	0.1	71.0	29.0	100.0

Chart 8: Visitor Arrivals by Carrier by Sex, 2<sup>nd</sup> quarter 2012



## Appendix 1

### Concepts and Definitions

Persons entering Solomon Islands classify themselves into three (3) categories; returning resident, intending resident, and visitor. The concepts and definitions of the various categories are as follows:

#### (i) *Returning residents*

- Solomon Islanders and non-Solomon Islanders who have left the country and are returning to continue their residence.
- Non Solomon Islanders includes resident permit holders and Diplomatic officials, and their immediate family members. This may also includes legal or official arrangements that fall out side of the above.

#### (ii) *Intending residents*

- Non-Solomon Islander who wish to take up residence in Solomon Islands.

#### (iii) *Visitors*

- Any traveller who is not a Solomon Islander and who purposely spend less time – at most a period of 120 days<sup>2</sup>, in the country and with the intention and purpose of visiting.
- *Tourist*
  - Visitors who further classify themselves stating their visit are purposely for '*holiday and vacation*'. This exclude, tourist arrivals by cruise ships.
  - Wife accompanying husband on business purpose is a private tourist unless also working.
  - *World Tourism Organization WTO definition of Tourism:*  
*It comprises the activities of persons travelling to and staying in places outside their usual environment for not more than a year for leisure, business and other purposes not related to the exercise of an activity remunerated from within the place visited*<sup>3</sup>.

#### ( iv) *Markets*

- *Country of Usual Residence*

---

<sup>2</sup> Solomon Islands 1993 Statistical Yearbook.

<sup>3</sup> Dimensions of Hospitality, Study guide 1. p17

Appendix 2

Table 9: Intending Resident Arrivals by Country of Residence by Occupation and Sex: 2<sup>nd</sup> Quarter 2012

Country of Usual Residence	Professional and Technical		Administration and Managerial		Clerical & Related Work		Sales Worker		Service Worker		Agriculture Forestry Fishery		Production & Related Work		Other		No Work		Total		
	M	F	M	F	M	F	M	F	M	F	M	F	M	F	M	F	M	F	M	F	All
Australia	35	17	17	5	-	-	-	-	47	16	-	1	7	-	51	45	15	18	172	102	274
PNG	2	3	3	1	-	-	-	-	4	4	1	-	2	-	17	5	8	4	37	17	54
US	4	-	-	-	-	-	-	-	-	1	1	-	-	2	-	-	1	6	3	9	9
NZ	4	5	5	1	-	-	-	-	12	6	1	-	-	-	9	8	-	4	31	24	55
UK	2	4	2	-	-	-	-	-	-	-	-	-	1	-	-	1	-	-	5	5	10
Japan	6	1	2	-	-	1	-	-	-	-	-	-	-	6	3	1	1	15	6	21	
Germany	-	-	-	-	-	-	-	-	-	-	-	-	-	-	-	-	-	-	-	-	-
Canada	-	-	-	-	-	-	-	-	-	-	-	-	-	-	-	-	2	-	2	-	2
Oth.Pacific	5	6	2	-	-	1	-	-	10	7	-	-	-	-	3	3	2	-	22	17	39
Vanuatu	6	4	-	-	-	1	-	-	2	4	-	-	-	-	2	1	2	2	12	12	24
Hong Kong	-	-	-	-	-	-	-	-	-	1	-	-	-	-	-	-	-	1	-	2	2
Fiji	14	12	5	-	-	-	-	-	7	5	1	-	1	-	13	5	6	4	47	26	73
Oth.Asia	31	21	64	8	3	2	20	-	11	7	14	1	29	-	127	11	39	12	338	62	400
Netherlands	1	-	-	-	-	-	-	-	-	-	-	-	-	-	-	-	-	-	1	-	1
Oth.Europe	3	-	-	-	-	-	-	-	-	-	-	-	-	-	1	-	-	-	3	1	4
France	-	-	1	-	-	-	-	-	-	-	-	-	-	-	1	-	-	-	2	-	2
Italy	-	-	-	-	-	-	-	-	-	-	-	-	-	-	-	1	-	-	-	1	1
Oth.Country	-	-	1	1	-	-	-	-	-	-	-	-	-	-	2	1	-	-	3	2	5
Total	113	73	102	16	3	5	20	-	93	51	17	3	40	-	233	85	75	47	696	280	976
	Percentage																				
Australia	12.8	6.2	6.2	1.8	-	-	-	-	17.2	5.8	-	0.4	2.6	-	18.6	16.4	5.5	6.6	62.8	37.2	100.0
PNG	3.7	5.6	5.6	1.9	-	-	-	-	7.4	7.4	1.9	-	3.7	-	31.5	9.3	14.8	7.4	68.5	31.5	100.0
US	44.4	-	-	-	-	-	-	-	-	11.1	-	11.1	-	22.2	-	-	11.1	66.7	33.3	100.0	100.0
NZ	7.3	9.1	9.1	1.8	-	-	-	-	21.8	10.9	1.8	-	-	-	16.4	14.5	-	7.3	56.4	43.6	100.0
UK	20.0	40.0	20.0	-	-	-	-	-	-	-	-	-	10.0	-	-	10.0	-	-	50.0	50.0	100.0
Japan	28.6	4.8	9.5	-	-	4.8	-	-	-	-	-	-	-	28.6	14.3	4.8	4.8	71.4	28.6	100.0	
Germany	-	-	-	-	-	-	-	-	-	-	-	-	-	-	-	-	-	-	-	-	-
Canada	-	-	-	-	-	-	-	-	-	-	-	-	-	-	-	-	100.0	-	100.0	-	100.0
Oth.Pacific	12.8	15.4	5.1	-	-	2.6	-	-	25.6	17.9	-	-	-	-	7.7	7.7	5.1	-	56.4	43.6	100.0
Vanuatu	25.0	16.7	-	-	-	4.2	-	-	8.3	16.7	-	-	-	-	8.3	4.2	8.3	8.3	50.0	50.0	100.0
Hong Kong	-	-	-	-	-	-	-	-	-	-	-	-	-	-	-	-	-	-	-	-	-
Fiji	19.2	16.4	6.8	-	-	-	-	-	9.6	6.8	1.4	-	1.4	-	17.8	6.8	8.2	5.5	64.4	35.6	100.0
Oth.Asia	7.8	5.3	16.0	2.0	0.8	0.5	5.0	-	2.8	1.8	3.5	0.3	7.3	-	31.8	2.8	9.8	3.0	84.5	15.5	100.0
Netherlands	-	-	-	-	-	-	-	-	-	-	-	-	-	-	-	-	-	-	-	-	-
Oth.Europe	75.0	-	-	-	-	-	-	-	-	-	-	-	-	-	-	25.0	-	-	75.0	25.0	100.0
France	-	-	-	-	-	-	-	-	-	-	-	-	-	-	-	-	-	-	-	-	-
Italy	-	-	-	-	-	-	-	-	-	-	-	-	-	-	-	100.0	-	-	-	-	100.0
Oth.Country	-	-	20.0	20.0	-	-	-	-	-	-	-	-	-	-	40.0	20.0	-	-	60.0	40.0	100.0
Total	11.6	7.5	10.5	1.6	0.3	0.5	2.0	-	9.5	5.2	1.7	0.3	4.1	-	23.9	8.7	7.7	4.8	71.3	28.7	100.0

Table 10: Intending Resident Arrivals by Country of Residence by Age Groups by Sex: 2<sup>nd</sup> Quarter 2012

Country of Usual Residence	Age-Group																		Total		
	0-14		15-24		25-34		35-44		45-54		55-64		65+		Not Stated		M	F	All		
	M	F	M	F	M	F	M	F	M	F	M	F	M	F							
Australia	15	9	3	2	13	28	33	23	53	20	32	7	9	2	14	11	172	102	274		
PNG	1	3	-	2	7	6	16	2	4	2	1	-	-	-	8	2	37	17	54		
US	-	-	-	-	1	-	2	-	-	2	1	-	-	-	2	1	6	3	9		
NZ	-	2	1	2	2	4	6	2	13	6	7	6	-	-	2	2	31	24	55		
UK	-	1	-	-	2	1	-	-	2	2	1	1	-	-	-	-	5	5	10		
Japan	-	-	-	-	5	3	5	2	2	1	3	-	-	-	-	-	15	6	21		
Germany	-	-	-	-	-	-	-	-	-	-	-	-	-	-	-	-	-	-	-		
Canada	-	-	-	-	-	-	-	-	1	-	1	-	-	-	-	-	2	-	2		
Oth.Pacific	1	1	1	3	5	4	7	5	4	3	1	1	-	-	3	-	22	17	39		
Vanuatu	1	1	2	4	3	-	5	1	-	5	-	-	-	-	1	1	12	12	24		
Hong Kong	-	-	-	-	-	1	-	-	-	-	-	-	-	-	-	1	-	2	2		
Fiji	4	4	-	4	11	7	7	2	11	6	7	-	-	-	7	3	47	26	73		
Oth.Asia	5	6	31	6	84	21	88	17	85	7	29	2	2	-	14	3	338	62	400		
Netherlands	-	-	-	-	-	-	1	-	-	-	-	-	-	-	-	-	1	-	1		
Oth.Europe	-	-	-	-	-	1	-	-	3	-	-	-	-	-	-	-	3	1	4		
France	-	-	-	-	1	-	-	-	1	-	-	-	-	-	-	-	2	-	2		
Italy	-	-	-	-	-	1	-	-	-	-	-	-	-	-	-	-	-	1	1		
Oth.Country	-	-	-	1	-	-	1	1	1	-	1	-	-	-	-	-	3	2	5		
Total	27	27	38	24	134	77	171	55	180	54	84	17	11	2	51	24	696	280	976		
	<u>Percentage</u>																				
Australia	5.5	3.3	1.1	0.7	4.7	10.2	12.0	8.4	19.3	7.3	11.7	2.6	3.3	0.7	5.1	4.0	62.8	37.2	100.0		
PNG	1.9	5.6	-	3.7	13.0	11.1	29.6	3.7	7.4	3.7	1.9	-	-	-	14.8	3.7	68.5	31.5	100.0		
US	-	-	-	-	11.1	-	22.2	-	-	22.2	11.1	-	-	-	22.2	11.1	66.7	33.3	100.0		
NZ	-	3.6	1.8	3.6	3.6	7.3	10.9	3.6	23.6	10.9	12.7	10.9	-	-	3.6	3.6	56.4	43.6	100.0		
UK	-	10.0	-	-	20.0	10.0	-	-	20.0	20.0	10.0	10.0	-	-	-	-	50.0	50.0	100.0		
Japan	-	-	-	-	23.8	14.3	23.8	9.5	9.5	4.8	14.3	-	-	-	-	-	71.4	28.6	100.0		
Germany	-	-	-	-	-	-	-	-	-	-	-	-	-	-	-	-	-	-	-		
Canada	-	-	-	-	-	-	-	-	50.0	-	50.0	-	-	-	-	-	100.0	-	100.0		
Oth.Pacific	2.6	2.6	2.6	7.7	12.8	10.3	17.9	12.8	10.3	7.7	2.6	2.6	-	-	7.7	-	56.4	43.6	100.0		
Vanuatu	4.2	4.2	8.3	16.7	12.5	-	20.8	4.2	-	20.8	-	-	-	-	4.2	4.2	50.0	50.0	100.0		
Hong Kong	-	-	-	-	-	-	-	-	-	-	-	-	-	-	-	-	-	-	-		
Fiji	5.5	5.5	-	5.5	15.1	9.6	9.6	2.7	15.1	8.2	9.6	-	-	-	9.6	4.1	64.4	35.6	100.0		
Oth.Asia	1.3	1.5	7.8	1.5	21.0	5.3	22.0	4.3	21.3	1.8	7.3	0.5	0.5	-	3.5	0.8	84.5	15.5	100.0		
Netherlands	-	-	-	-	-	-	-	-	-	-	-	-	-	-	-	-	-	-	-		
Oth.Europe	-	-	-	-	-	25.0	-	-	75.0	-	-	-	-	-	-	-	75.0	25.0	100.0		
France	-	-	-	-	-	-	-	-	-	-	-	-	-	-	-	-	-	-	-		
Italy	-	-	-	-	-	100.0	-	-	-	-	-	-	-	-	-	-	-	100.0	100.0		
Oth.Country	-	-	-	20.0	-	-	20.0	20.0	20.0	-	20.0	-	-	-	-	-	60.0	40.0	100.0		
Total	2.8	2.8	3.9	2.5	13.7	7.9	17.5	5.6	18.4	5.5	8.6	1.7	1.1	0.2	5.2	2.5	71.3	28.7	100.0		



Table 11: Returning Resident Arrivals by Country of Residence by Age Groups by Sex: 2<sup>nd</sup> Quarter 2012

Country of Usual Residence	Age-Group																Total		
	0-14		15-24		25-34		35-44		45-54		55-64		65+		Not Stated		M	F	All
	M	F	M	F	M	F	M	F	M	F	M	F	M	F	M	F	M	F	All
Australia	-	-	-	-	-	-	-	-	-	-	-	-	-	-	-	-	-	-	-
PNG	-	-	-	-	-	-	-	-	-	-	-	-	-	-	-	-	-	-	-
US	-	-	-	-	-	-	-	-	-	-	-	-	-	-	-	-	-	-	-
NZ	-	-	-	-	-	-	-	-	-	-	-	-	-	-	-	-	-	-	-
UK	-	-	-	-	-	-	-	-	-	-	-	-	-	-	-	-	-	-	-
Japan	1	-	-	-	2	-	3	1	-	-	-	-	-	-	-	-	6	2	8
Germany	-	-	-	-	-	-	-	-	-	-	-	-	-	-	-	-	-	-	-
Canada	-	-	-	-	-	-	-	-	-	-	-	-	-	-	-	-	-	-	-
Oth.Pacific	-	-	-	-	-	-	-	-	-	-	-	-	-	-	-	-	-	-	-
Vanuatu	-	-	-	-	-	-	-	-	-	-	-	-	-	-	-	-	-	-	-
Hong Kong	-	-	-	-	-	-	-	-	-	-	-	-	-	-	-	-	-	-	-
Fiji	-	-	-	-	-	-	-	-	-	-	-	-	-	-	-	-	-	-	-
Oth.Asia	-	-	-	-	-	-	-	-	-	-	-	-	-	-	-	-	-	-	-
Netherlands	-	-	-	-	-	-	-	-	-	-	-	-	-	-	-	-	-	-	-
Oth.Europe	-	-	-	-	-	-	-	-	-	-	-	-	-	-	-	-	-	-	-
France	-	-	-	-	-	-	-	-	-	-	-	-	-	-	-	-	-	-	-
Italy	-	-	-	-	-	-	-	-	-	-	-	-	-	-	-	-	-	-	-
Oth.Country	-	-	-	-	-	-	-	-	-	-	-	-	-	-	-	-	-	-	-
Solomon Is.	113	84	179	186	551	310	671	312	463	207	227	72	79	15	159	89	2,442	1,275	3,717
Total	114	84	179	186	553	310	674	313	463	207	227	72	79	16	159	89	2,448	1,277	3,725
<u>Percentage</u>																			
Australia	-	-	-	-	-	-	-	-	-	-	-	-	-	-	-	-	-	-	-
PNG	-	-	-	-	-	-	-	-	-	-	-	-	-	-	-	-	-	-	-
US	-	-	-	-	-	-	-	-	-	-	-	-	-	-	-	-	-	-	-
NZ	-	-	-	-	-	-	-	-	-	-	-	-	-	-	-	-	-	-	-
UK	-	-	-	-	-	-	-	-	-	-	-	-	-	-	-	-	-	-	-
Japan	12.5	-	-	-	25.0	-	37.5	12.5	-	-	-	-	-	12.5	-	-	75.0	25.0	100.0
Germany	-	-	-	-	-	-	-	-	-	-	-	-	-	-	-	-	-	-	-
Canada	-	-	-	-	-	-	-	-	-	-	-	-	-	-	-	-	-	-	-
Oth.Pacific	-	-	-	-	-	-	-	-	-	-	-	-	-	-	-	-	-	-	-
Vanuatu	-	-	-	-	-	-	-	-	-	-	-	-	-	-	-	-	-	-	-
Hong Kong	-	-	-	-	-	-	-	-	-	-	-	-	-	-	-	-	-	-	-
Fiji	-	-	-	-	-	-	-	-	-	-	-	-	-	-	-	-	-	-	-
Oth.Asia	-	-	-	-	-	-	-	-	-	-	-	-	-	-	-	-	-	-	-
Netherlands	-	-	-	-	-	-	-	-	-	-	-	-	-	-	-	-	-	-	-
Oth.Europe	-	-	-	-	-	-	-	-	-	-	-	-	-	-	-	-	-	-	-
France	-	-	-	-	-	-	-	-	-	-	-	-	-	-	-	-	-	-	-
Italy	-	-	-	-	-	-	-	-	-	-	-	-	-	-	-	-	-	-	-
Oth.Country	-	-	-	-	-	-	-	-	-	-	-	-	-	-	-	-	-	-	-
Solomon Is.	3.0	2.3	4.8	5.0	14.8	8.3	18.1	8.4	12.5	5.6	6.1	1.9	2.1	0.4	4.3	2.4	65.7	34.3	100.0
Total	3.1	2.3	4.8	5.0	14.8	8.3	18.1	8.4	12.4	5.6	6.1	1.9	2.1	0.4	4.3	2.4	65.7	34.3	100.0

Table 12: Returning Resident Arrivals by Country of Residence by Occupation and Sex: 2<sup>nd</sup> Quarter 2012

Country of Usual Residence	Professional and Technical		Administration and Managerial		Clerical & Related Work		Sales Worker		Service Worker		Agriculture Forestry Fishery		Production & Related Work		Other		No Work		Total		All
	M	F	M	F	M	F	M	F	M	F	M	F	M	F	M	F	M	F	M	F	
	Australia	-	-	-	-	-	-	-	-	-	-	-	-	-	-	-	-	-	-	-	
PNG	-	-	-	-	-	-	-	-	-	-	-	-	-	-	-	-	-	-	-	-	-
US	-	-	-	-	-	-	-	-	-	-	-	-	-	-	-	-	-	-	-	-	-
NZ	-	-	-	-	-	-	-	-	-	-	-	-	-	-	-	-	-	-	-	-	-
UK	-	-	-	-	-	-	-	-	-	-	-	-	-	-	-	-	-	-	-	-	-
Japan	1	-	1	-	-	1	-	-	-	-	-	-	-	-	3	1	1	-	6	2	8
Germany	-	-	-	-	-	-	-	-	-	-	-	-	-	-	-	-	-	-	-	-	-
Canada	-	-	-	-	-	-	-	-	-	-	-	-	-	-	-	-	-	-	-	-	-
Oth.Pacific	-	-	-	-	-	-	-	-	-	-	-	-	-	-	-	-	-	-	-	-	-
Vanuatu	-	-	-	-	-	-	-	-	-	-	-	-	-	-	-	-	-	-	-	-	-
Hong Kong	-	-	-	-	-	-	-	-	-	-	-	-	-	-	-	-	-	-	-	-	-
Fiji	-	-	-	-	-	-	-	-	-	-	-	-	-	-	-	-	-	-	-	-	-
Oth.Asia	-	-	-	-	-	-	-	-	-	-	-	-	-	-	-	-	-	-	-	-	-
Netherlands	-	-	-	-	-	-	-	-	-	-	-	-	-	-	-	-	-	-	-	-	-
Oth.Europe	-	-	-	-	-	-	-	-	-	-	-	-	-	-	-	-	-	-	-	-	-
France	-	-	-	-	-	-	-	-	-	-	-	-	-	-	-	-	-	-	-	-	-
Italy	-	-	-	-	-	-	-	-	-	-	-	-	-	-	-	-	-	-	-	-	-
Oth.Country	-	-	-	-	-	-	-	-	-	-	-	-	-	-	-	-	-	-	-	-	-
Solomon Is.	810	468	272	86	24	30	59	15	55	180	55	10	74	6	916	349	177	131	2,442	1,275	3,717
Total	811	468	273	86	24	31	59	15	55	180	55	10	74	6	919	350	178	131	2,448	1,277	3,725
	<u>Percentage</u>																				
Australia	-	-	-	-	-	-	-	-	-	-	-	-	-	-	-	-	-	-	-	-	-
PNG	-	-	-	-	-	-	-	-	-	-	-	-	-	-	-	-	-	-	-	-	-
US	-	-	-	-	-	-	-	-	-	-	-	-	-	-	-	-	-	-	-	-	-
NZ	-	-	-	-	-	-	-	-	-	-	-	-	-	-	-	-	-	-	-	-	-
UK	-	-	-	-	-	-	-	-	-	-	-	-	-	-	-	-	-	-	-	-	-
Japan	12.5	-	12.5	-	-	12.5	-	-	-	-	-	-	-	-	37.5	12.5	12.5	-	75.0	25.0	100.0
Germany	-	-	-	-	-	-	-	-	-	-	-	-	-	-	-	-	-	-	-	-	-
Canada	-	-	-	-	-	-	-	-	-	-	-	-	-	-	-	-	-	-	-	-	-
Oth.Pacific	-	-	-	-	-	-	-	-	-	-	-	-	-	-	-	-	-	-	-	-	-
Vanuatu	-	-	-	-	-	-	-	-	-	-	-	-	-	-	-	-	-	-	-	-	-
Hong Kong	-	-	-	-	-	-	-	-	-	-	-	-	-	-	-	-	-	-	-	-	-
Fiji	-	-	-	-	-	-	-	-	-	-	-	-	-	-	-	-	-	-	-	-	-
Oth.Asia	-	-	-	-	-	-	-	-	-	-	-	-	-	-	-	-	-	-	-	-	-
Netherlands	-	-	-	-	-	-	-	-	-	-	-	-	-	-	-	-	-	-	-	-	-
Oth.Europe	-	-	-	-	-	-	-	-	-	-	-	-	-	-	-	-	-	-	-	-	-
France	-	-	-	-	-	-	-	-	-	-	-	-	-	-	-	-	-	-	-	-	-
Italy	-	-	-	-	-	-	-	-	-	-	-	-	-	-	-	-	-	-	-	-	-
Oth.Country	-	-	-	-	-	-	-	-	-	-	-	-	-	-	-	-	-	-	-	-	-
Solomon Is.	21.8	12.6	7.3	2.3	0.6	0.8	1.6	0.4	1.5	4.8	1.5	0.3	2.0	0.2	24.6	9.4	4.8	3.5	65.7	34.3	100.0
Total	21.8	12.6	7.3	2.3	0.6	0.8	1.6	0.4	1.5	4.8	1.5	0.3	2.0	0.2	24.7	9.4	4.8	3.5	65.7	34.3	100.0