



**Solomon Islands Government**

**Statistical Bulletin: No: 15/2013**

**VISITOR STATISTICS**

(Third Quarter 2013)

**Solomon Islands National Statistics Office**

**Ministry of Finance**

**Honiara**

## TABLE OF CONTENTS

Introduction.....	3
COMMENTARY OF RESULTS .....	5
<i>International Arrivals</i> .....	5
<i>Arrivals by Country of Residence</i> .....	5
<i>Visitor by Month</i> .....	5
<i>Tourists</i> .....	5
<i>Visitors by Purpose of Visit</i> .....	5
<i>Visitor by Age Group</i> .....	5
<i>Visitor by Occupation:</i> .....	5
<i>Visitor by Carrier</i> .....	5
<b>Charts</b>	
<hr/>	
Chart 1: Arrivals by Category, 3 <sup>rd</sup> Quarter 2013.....	6
Chart 2: Visitor Arrivals by Country of Residence by quarter: 3 <sup>rd</sup> Quarter 2013.....	7
Chart 3: Visitor Arrivals by Month, 2010 to 3 <sup>rd</sup> Quarter 2013 .....	8
Chart 4: Tourist Arrivals by Country of Residence, 3 <sup>rd</sup> Quarter 2013.....	9
Chart 5: Visitor Arrivals by Country of Residence by Purpose of Visit, 3 <sup>rd</sup> Quarter 2013.....	10
Chart 6: Visitor Arrivals by Age group category by sex, 3 <sup>rd</sup> Quarter 2013.....	11
Chart 7: Visitor Arrivals by Occupation by sex, 3 <sup>rd</sup> Quarter 2013.....	12
Chart 8: Visitor Arrivals by Carrier by sex, 3 <sup>rd</sup> Quarter 2013.....	13
<b>Tables</b>	
Table 1: Total Arrivals Classified by Purpose of Travel by Sex by Year by Quarter: 3 <sup>rd</sup> Quarter 2013.....	6
Table 2: Visitors Arrivals by Country of Residence by Year by Quarter: 3 <sup>rd</sup> Quarter 2013 .....	7
Table 3: Visitors Arrivals by Month: 2006 to 3 <sup>rd</sup> Quarter 2013 .....	8
Table 4: Visitors Classified as Tourists by Country of Residence by Year, Quarter and Average Length of Stay: 2010 to 3 <sup>rd</sup> Quarter 2013.....	9
Table 5: Visitor Arrivals by Country of Residence by Purpose of Visit by sex: 3 <sup>rd</sup> Quarter 2013.....	10
Table 6: Visitors Arrivals by Country of Residence by Age Groups by sex: 3 <sup>rd</sup> Quarter 2013 .....	11
Table 7: Visitors Arrivals by Country of Residence by Occupation and Sex: 3 <sup>rd</sup> Quarter 2013 .....	12
Table 8: Visitors Arrivals by Country of Residence by Carrier By Sex: 3 <sup>rd</sup> Quarter 2013.....	13
Appendix 1 .....	14
<i>Concepts and Definitions</i> .....	14
Appendix 2.....	15
Table 9: Intending Resident Arrivals by Country of residence by Occupation and sex: 3 <sup>rd</sup> Quarter 2013 .....	15
Table 10: Intending Resident Arrivals by country of Residence by Age Groups by Sex: 3 <sup>rd</sup> Quarter 2013 .....	16
Table 11: Returning Resident Arrivals by country of Residence by Age Groups and sex: 3 <sup>rd</sup> Quarter 2013 ....	17
Table 12: Returning Resident Arrivals by country of Residence by Occupation and sex: 3 <sup>rd</sup> Quarter 2013 .....	18

## Introduction

This quarterly bulletin is produced by the National Statistics Office NSO in the Ministry of Finance and Treasury. It provides information on international arrivals comprised of the returning resident, intending resident, and visitor. The explanation of these categories is provided in Appendix 1 of the bulletin.

Visitor category comprised the bigger share of the bulletin, (portrayed in tables 1 to 8); compared to the returning and intending resident category portrayed in Tables 1, and 9 to 12. The bulletin includes twelve tables and eight charts stretched over cross-field tabulation, preferably to meet information need of local, regional, and international researchers.

The information captured through a self fill Disembarkation form that was completed by all disembarking passengers. The forms were collected by Immigration officials at international check-in counters on arrival. The coverage of the bulletin is complete.

Sheer acknowledgement is owed to the Immigration Department for their continuous support of this bulletin, by providing an office space and permitting the statistics office to input completed forms. With the official arrangement in-placed between the Statistics and Immigration departments this bulletin is possible.

The inclusion of four new tables 9 to 12 in Appendix 2 of the bulletin anticipates to complete the distribution portrait of Intending and Returning resident. The distribution is by age groups, occupation and by country of usual residence.

Data limitations, highlighted in the previous bulletin still remain, though some have substantially improved but noted again for ease of reference as follows:-

- Data entry duplication by the Immigration and Statistics departments was a long standing issue. Discussion of the issues had been made by the two departments, though resolution has been recognized, this was yet to be put in place.
- Timeliness of visitor statistics has improved but the bulletin may be delayed by the production process.
- The information contained in the bulletin is based on information captured from the data source by the SINSO.
- The monetary value of the industry is not available and thus not possible in this bulletin. The concepts and definitions of the arrival categories were included in Appendix 1. The symbols that are likely to be used are:

-	zero if representing a value
-	negative change if representing a percentage change
+	positive change if representing a percentage change
p	preliminary figure, subject to revision
r	revised
e	estimate
n/a	not available

For more information contact the Statistics Office, Department of Finance and Treasury:

TELEPHONE : (677) 22154/21427

FACSMILE : (677) 23775

E-MAIL : STATS-management@mof.gov.sb

: STATS-SocialDemography@mof.gov.sb

WEBSITE : **<http://www.spc.int/prism/country/sb/stats>**

Contact persons: 1. Mrs. Irene KALAUMA, Chief Statistician

2. Mrs. Anterlyn TUZAKANA, Senior Statistician

## COMMENTARY OF RESULTS

### International Arrivals

Total Arrivals for the third quarter of 2013 was 11,695. This figure showed an increase of 6.3% compared to the previous quarter (2<sup>nd</sup> Quarter 2013). Compared to the same quarter last year, it showed a decrease of 1.1%.

Arrivals classified by the category for the third quarter of 2013 showed that returning resident comprise of 33%. Visitors recorded 59% and the remaining 8% was recorded for intending resident.

Visitor arrivals for the third quarter showed an increase of 11.2% to 6,887 compared to the second quarter 2013 figure of 6,195. Compared to the same quarter in 2012 it showed a decrease of 5.7%. Table 1 showed, visitor and returning resident categories comprised the larger proportion of all arrivals while the intending resident represents the lesser share during the quarter. Chart 1, gives a clear picture of all the categories.

### Visitor by Country of Residence

Arrivals by country of residence for third quarter showed that Australians (43.6%) remains the frequent travellers to Solomon Islands as in the previous quarters, followed by Other Asia (10.8%), PNG (9.0%), NZ (8.8%), Fiji (7.7 %), and US (5.2%).

### Visitor by Month

Visitors by monthly arrivals for third quarter showed that July has the highest number of arrivals with 2,574 persons. This was followed by the month of September with a recorded total of 2,291 persons and August the least with 2,022 persons.

### Tourists

Tourist<sup>1</sup> arrivals for third quarter of the year totalled to 1,692 persons and they spent an average of 13 days in the country. The highest number of tourists recorded for the quarter comes from Australia (55.7%) and staying in the country for an average of 12 days. This was followed by USA (10.8%), Other Asia (9.7%), UK (4.5 %), NZ (3.7%) and Japan (3.5%).

### Visitor by Purpose of Visit

Distribution of visitors by purpose of visit revealed that Business & Conference (34.2%) as most popular during the quarter. This was followed by 'Other' (27.6%), Holiday & Vocation (24.6%), Visit friends & relatives (11.9%) and Transit & stopover the least with 1.8%.

### Visitor by Age Group

Visitor Arrivals by broad age groups showed that 78.6% of arrivals were in the 25years to 64years age range. The younger and the older age brackets represent 16.9% while the remaining 4.5% represents arrivals who did not state their age. Male represent 72.7% of the arrival and female 27.3%. (Refer to Chart 6)

### Visitor by Occupation

Visitor by occupational category revealed that those who stated 'Other' (38.6%) as their occupation recorded the highest during the quarter. This was followed by Professional & Technical (30.4%), Administration and managerial (9.7%), No work (6.6%), Service worker (6.2%), and Production & Related Work (3.6%). Table 7 further revealed that Australia not only dominated the Arrivals in terms of markets but also dominated most of the categories of occupations during the quarter. Refer to Table 7 for further analysis.

### Visitor by Carrier

The most popular carriers during the quarter were Solomon Airlines (48.3%) followed by Virgin Australia (25.3%), Air Niu Gini (16.7%) and Air Pacific (7%).

---

<sup>1</sup> Refer to Appendix 1 for the definition

Table 1: Total Arrivals Classified by Purpose of Travel by Sex, by Year by Quarter: 3<sup>rd</sup> Quarter 2013

Year / Quarter	Returning Resident						Intending Resident				Visitor			Total		
	Solomon Islander			Non-Solomon Islander			All	M	F	T	M	F	T	M	F	All
	M	F	T	M	F	T										
2007 4 <sup>th</sup>	2,107	1,095	3,202	486	235	721	3,923	589	153	742	2,525	1,132	3,657	5,707	2,615	8,322
2008 1 <sup>st</sup>	1,537	938	2,475	4	2	6	2,481	537	174	711	2,094	879	2,973	4,172	1,993	6,165
2 <sup>nd</sup>	2,492	1,268	3,760	3	1	4	3,764	312	87	399	2,857	1,344	4,201	5,664	2,700	8,364
3 <sup>rd</sup>	1,593	952	2,545	761	437	1,198	3,743	605	155	760	3,138	1,480	4,618	6,097	3,024	9,121
2009 4 <sup>th</sup>	2,507	1,366	3,873	969	453	1,422	5,295	396	125	521	3,063	1,409	4,472	6,935	3,353	10,288
2009 1 <sup>st</sup>	1,173	760	1,933	677	436	1,113	3,046	659	315	974	3,015	1,258	4,273	5,524	2,769	8,293
2 <sup>nd</sup>	1,427	728	2,155	471	238	709	2,864	611	244	855	3,242	1,374	4,616	5,751	2,584	8,335
3 <sup>rd</sup>	1,182	709	1,891	425	220	645	2,536	786	355	1,141	3,263	1,519	4,782	5,656	2,803	8,459
2010 4 <sup>th</sup>	2,145	1,152	3,297	393	197	590	3,887	722	282	1,004	3,177	1,412	4,589	6,437	3,043	9,480
2010 1 <sup>st</sup>	1,045	695	1,740	550	342	892	2,632	808	380	1,188	3,115	1,095	4,210	5,518	2,512	8,030
2 <sup>nd</sup>	1,337	707	2,044	494	272	766	2,810	808	307	1,115	3,370	1,384	4,754	6,009	2,670	8,679
3 <sup>rd</sup>	1,421	730	2,151	485	274	759	2,910	835	316	1,151	4,494	1,768	6,262	7,235	3,088	10,323
2011 4 <sup>th</sup>	2,783	1,550	4,333	13	4	17	4,350	848	284	1,132	3,766	1,529	5,295	7,410	3,367	10,777
2011 1 <sup>st</sup>	1,187	724	1,911	694	332	1,026	2,937	1,058	362	1,420	3,972	1,147	5,119	6,911	2,565	9,476
2 <sup>nd</sup>	1,601	880	2,481	615	292	907	3,388	716	258	974	4,071	1,434	5,505	7,003	2,864	9,867
3 <sup>rd</sup>	1,716	739	2,455	642	282	924	3,379	930	275	1,205	4,523	1,721	6,244	7,811	3,017	10,828
2012 4 <sup>th</sup>	3,297	1,765	5,062	4	2	6	5,068	805	268	1,073	4,341	1,732	6,073	8,447	3,767	12,214
2012 1 <sup>st</sup>	1,915	994	2,909	15	3	18	2,927	1,029	387	1,416	3,554	1,097	4,651	6,513	2,481	8,994
2 <sup>nd</sup>	1,782	967	2,749	667	312	979	3,728	695	278	973	4,921	2,008	6,929	8,065	3,565	11,630
3 <sup>rd</sup>	2,169	1,218	3,387	22	12	34	3,421	840	255	1,095	5,123	2,184	7,307	8,154	3,669	11,823
2013 4 <sup>th</sup>	3,192	1,784	4,976	5	1	6	4,982	631	215	846	3,572	1,466	5,038	7,400	3,466	10,866
2013 1 <sup>st</sup>	1,966	1,111	3,077	6	0	6	3,083	961	338	1,299	4,034	1,284	5,318	6,967	2,733	9,700
2 <sup>nd</sup>	2,422	1,344	3,766	1	2	3	3,769	764	279	1,043	4,531	1,664	6,195	7,718	3,289	11,007
3 <sup>rd</sup>	2,442	1,415	3,857	5	3	8	3,865	715	228	943	5,007	1,880	6,887	8,169	3,526	11,695
Percentage change																
08 <sup>4th</sup> -09 <sup>4th</sup>	-14.4	-15.7	-14.9	-59.4	-56.5	-58.5	-26.6	82.3	125.6	92.7	3.7	0.2	2.6	-7.2	-9.2	-7.9
09 <sup>4th</sup> -10 <sup>1st</sup>	-51.3	-39.7	-47.2	39.9	73.6	51.2	-32.3	11.9	34.8	18.3	-2.0	-22.5	-8.3	-14.3	-17.4	-15.3
09 <sup>1st</sup> -10 <sup>1st</sup>	-10.9	-8.6	-10.0	-18.8	-21.6	-19.9	-13.6	22.6	20.6	22.0	3.3	-13.0	-1.5	-0.1	-9.3	-3.2
10 <sup>2nd</sup> -10 <sup>3rd</sup>	6.3	3.3	5.2	-1.8	0.7	-0.9	3.6	3.3	2.9	3.2	33.4	27.7	31.7	20.4	15.7	18.9
09 <sup>3rd</sup> -10 <sup>3rd</sup>	20.2	3.0	13.7	14.1	24.5	17.7	14.7	6.2	-11.0	0.9	37.7	16.4	30.9	27.9	10.2	22.0
09 <sup>4th</sup> -10 <sup>4th</sup>	29.7	34.5	31.4	-96.7	-98.0	-97.1	11.9	17.5	0.7	12.7	18.5	8.3	15.4	15.1	10.6	13.7
10 <sup>1st</sup> -11 <sup>1st</sup>	13.6	4.2	9.8	26.2	-2.9	15.0	11.6	30.9	-4.7	19.5	27.5	4.7	21.6	25.2	2.1	18.0
10 <sup>4th</sup> -11 <sup>1st</sup>	-57.3	-53.3	-55.9	5238.5	8200.0	5935.3	-32.5	24.8	27.5	25.4	5.5	-25.0	-3.3	-6.7	-23.8	-12.1
11 <sup>1st</sup> -11 <sup>2nd</sup>	34.9	21.5	29.8	-11.4	-12.0	-11.6	15.4	-32.3	-28.7	-31.4	2.5	25.0	7.5	1.3	11.7	4.1
11 <sup>2nd</sup> -11 <sup>3rd</sup>	7.2	-16.0	-1.0	4.4	-3.4	1.9	-0.3	29.9	6.6	23.7	11.1	20.0	13.4	11.5	5.3	9.7
11 <sup>3rd</sup> -11 <sup>4th</sup>	92.1	138.8	106.2	-99.4	-99.3	-99.4	50.0	-13.4	-2.5	-11.0	-4.0	0.6	-2.7	8.1	24.9	12.8
11 <sup>4th</sup> -12 <sup>1st</sup>	-41.9	-43.7	-42.5	275.0	50.0	200.0	-42.2	27.8	44.4	32.0	-18.1	-36.7	-23.4	-22.9	-34.1	-26.4
11 <sup>2nd</sup> -12 <sup>2nd</sup>	11.3	9.9	10.8	8.5	6.8	7.9	10.0	-2.9	7.8	-0.1	20.9	40.0	25.9	15.2	24.5	17.9
12 <sup>1st</sup> -12 <sup>2nd</sup>	-6.9	-2.7	-5.5	4346.7	10300.0	5338.9	27.4	-32.5	-28.2	-31.3	38.5	83.0	49.0	23.8	43.7	29.3
11 <sup>3rd</sup> -12 <sup>3rd</sup>	26.4	64.8	38.0	-96.6	-95.7	-96.3	1.2	-9.7	-7.3	-9.1	13.3	26.9	17.0	4.4	21.6	9.2
12 <sup>2nd</sup> -12 <sup>3rd</sup>	21.7	26.0	23.2	-96.7	-96.2	-96.5	-8.2	20.9	-8.3	12.5	4.1	8.8	5.5	1.1	2.9	1.7
11 <sup>4th</sup> -12 <sup>4th</sup>	-3.2	1.1	-1.7	25.0	-50.0	0.0	-1.7	-21.6	-19.8	-21.2	-17.7	-15.4	-17.0	-12.4	-8.0	-11.0
12 <sup>3rd</sup> -12 <sup>4th</sup>	47.2	46.5	46.9	-77.3	-91.7	-82.4	45.6	-24.9	-15.7	-22.7	-30.3	-32.9	-31.1	-9.2	-5.5	-8.1
12 <sup>1st</sup> -13 <sup>1st</sup>	2.7	11.8	5.8	-60.0	-100.0	-66.7	5.3	-6.6	-12.7	-8.3	13.5	17.0	14.3	7.0	10.2	7.8
12 <sup>4th</sup> -13 <sup>1st</sup>	-38.4	-37.7	-38.2	20.0	-100.0	0.0	-38.1	52.3	57.2	53.5	12.9	-12.4	5.6	-5.9	-21.1	-10.7
12 <sup>2nd</sup> -13 <sup>2nd</sup>	35.9	39.0	37.0	-99.9	-99.4	-99.7	1.1	9.9	0.4	7.2	-7.9	-17.1	-10.6	-4.3	-7.7	-5.4
13 <sup>1st</sup> -13 <sup>2nd</sup>	23.2	21.0	22.4	-83.3	-	-50.0	22.3	-20.5	-17.5	-19.7	12.3	29.6	16.5	10.8	20.3	13.5
12 <sup>3rd</sup> -13 <sup>3rd</sup>	12.6	16.2	13.9	-77.3	-75.0	-76.5	13.0	-14.9	-10.6	-13.9	-2.3	-13.9	-5.7	0.2	-3.9	-1.1
13 <sup>2nd</sup> -13 <sup>3rd</sup>	0.8	5.3	2.4	400.0	50.0	166.7	2.5	-6.4	-18.3	-9.6	10.5	13.0	11.2	5.8	7.2	6.3

Chart 1: Arrivals by category 3<sup>rd</sup> quarter 2013

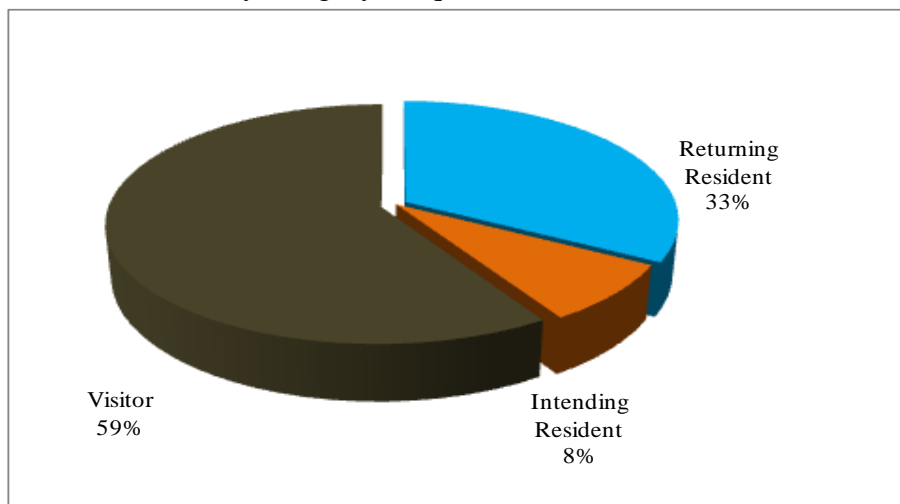


Table 2: Visitor Arrivals by Country of Residence by year by quarter: 3<sup>rd</sup> Quarter 2013

Country of Usual Residence	2009	2010				2011					2012				2013			
	Total	Q1	Q2	Q3	Q4	Total	Q1	Q2	Q3	Q4	Total	Q1	Q2	Q3	Q4	Q1	Q2	Q3
Australia	8,902	2,087	2,544	3,362	2,758	10,751	2,569	2,763	3,042	3,018	11,392	2,238	2,963	3,404	2,474	2,282	3,049	3,001
PNG	1,098	305	248	339	469	1,361	443	479	589	546	2,057	431	602	476	464	458	417	621
US	1,034	127	236	287	212	862	188	243	368	241	1,040	183	356	561	234	231	325	357
NZ	1,364	274	335	647	454	1,710	385	433	479	427	1,724	285	545	560	357	381	531	607
UK	419	82	108	141	101	432	78	110	101	91	380	81	84	151	69	104	110	152
Japan	873	166	95	151	177	589	145	106	229	161	641	162	112	211	129	128	116	179
Germany	100	24	33	26	18	101	22	26	38	25	111	22	40	29	26	33	19	35
Canada	88	32	22	25	34	113	51	30	55	56	192	29	25	30	27	28	35	40
Oth.Pacific	950	167	125	123	170	585	185	185	170	223	763	101	811	371	135	188	142	202
Vanuatu	308	48	86	126	145	405	125	103	100	185	513	121	148	179	147	250	185	191
Hong Kong	17	10	-	23	5	38	12	12	22	84	130	14	20	21	25	16	18	33
Fiji	917	206	278	273	234	991	262	327	285	330	1,204	300	510	444	301	451	424	528
Other Asia	1,409	503	477	509	336	1,825	487	523	562	484	2,056	500	544	577	484	623	655	743
Netherlands	51	11	9	16	17	53	18	13	20	13	64	12	11	23	11	10	6	24
Oth.Europe	374	78	63	100	66	307	60	62	63	61	246	76	74	121	50	53	57	70
France	81	12	24	24	22	82	10	20	22	8	60	24	19	36	9	21	21	26
Italy	66	4	3	13	19	39	13	17	20	30	80	13	12	40	28	16	18	16
Oth.Country	209	74	68	77	58	277	66	53	79	90	288	59	53	73	68	45	67	62
<b>Total</b>	<b>18,260</b>	<b>4,210</b>	<b>4,754</b>	<b>6,262</b>	<b>5,295</b>	<b>20,521</b>	<b>5,119</b>	<b>5,505</b>	<b>6,244</b>	<b>6,073</b>	<b>22,941</b>	<b>4,651</b>	<b>6,929</b>	<b>7,307</b>	<b>5,038</b>	<b>5,318</b>	<b>6,195</b>	<b>6,887</b>
Percentage																		
Australia	48.8	49.6	53.5	53.7	52.1	52.4	50.2	50.2	48.7	49.7	49.7	48.1	42.8	46.6	49.1	42.9	49.2	43.6
PNG	6.0	7.2	5.2	5.4	8.9	6.6	8.7	8.7	9.4	9.0	9.0	9.3	8.7	6.5	9.2	8.6	6.7	9.0
US	5.7	3.0	5.0	4.6	4.0	4.2	3.7	4.4	5.9	4.0	4.5	3.9	5.1	7.7	4.6	4.3	5.2	5.2
NZ	7.5	6.5	7.0	10.3	8.6	8.3	7.5	7.9	7.7	7.0	7.5	6.1	7.9	7.7	7.1	7.2	8.6	8.8
UK	2.3	1.9	2.3	2.3	1.9	2.1	1.5	2.0	1.6	1.5	1.7	1.7	1.2	2.1	1.4	2.0	1.8	2.2
Japan	4.8	3.9	2.0	2.4	3.3	2.9	2.8	1.9	3.7	2.7	2.8	3.5	1.6	2.9	2.6	2.4	1.9	2.6
Germany	0.5	0.6	0.7	0.4	0.3	0.5	0.4	0.5	0.6	0.4	0.5	0.5	0.6	0.4	0.5	0.6	0.3	0.5
Canada	0.5	0.8	0.5	0.4	0.6	0.6	1.0	0.5	0.9	0.9	0.8	0.6	0.4	0.4	0.5	0.5	0.6	0.6
Oth.Pacific	5.2	4.0	2.6	2.0	3.2	2.9	3.6	3.4	2.7	3.7	3.3	2.2	11.7	5.1	2.7	3.5	2.3	2.9
Vanuatu	1.7	1.1	1.8	2.0	2.7	2.0	2.4	1.9	1.6	3.0	2.2	2.6	2.1	2.4	2.9	4.7	3.0	2.8
Hong Kong	0.1	0.2	-	0.4	0.1	0.2	0.2	0.2	0.4	1.4	0.6	0.3	0.3	0.3	0.5	0.3	0.3	0.5
Fiji	5.0	4.9	5.8	4.4	4.4	4.8	5.1	5.9	4.6	5.4	5.2	6.5	7.4	6.1	6.0	8.5	6.8	7.7
Other Asia	7.7	11.9	10.0	8.1	6.3	8.9	9.5	9.5	9.0	8.0	9.0	10.8	7.9	7.9	9.6	11.7	10.6	10.8
Netherlands	0.3	0.3	0.2	0.3	0.3	0.3	0.4	0.2	0.3	0.2	0.3	0.3	0.2	0.3	0.2	0.2	0.1	0.3
Oth.Europe	2.0	1.9	1.3	1.6	1.2	1.5	1.2	1.1	1.0	1.0	1.1	1.6	1.1	1.7	1.0	1.0	0.9	1.0
France	0.4	0.3	0.5	0.4	0.4	0.4	0.2	0.4	0.4	0.1	0.3	0.5	0.3	0.5	0.2	0.4	0.3	0.4
Italy	0.4	0.1	0.1	0.2	0.4	0.2	0.3	0.3	0.3	0.5	0.3	0.3	0.2	0.5	0.6	0.3	0.3	0.2
Oth.Country	1.1	1.8	1.4	1.2	1.1	1.3	1.3	1.0	1.3	1.5	1.3	1.3	0.8	1.0	1.3	0.8	1.1	0.9
<b>Total</b>	<b>100</b>	<b>100</b>	<b>100</b>	<b>100</b>	<b>100.0</b>	<b>100.0</b>	<b>100.0</b>	<b>100.0</b>	<b>100.0</b>	<b>100.0</b>	<b>100.0</b>	<b>100.0</b>	<b>100.0</b>	<b>100.0</b>	<b>100.0</b>	<b>100.0</b>	<b>100.0</b>	<b>100.0</b>

Chart 2: Visitors Arrival by Country of residence by quarter, 3<sup>rd</sup> quarter 2013

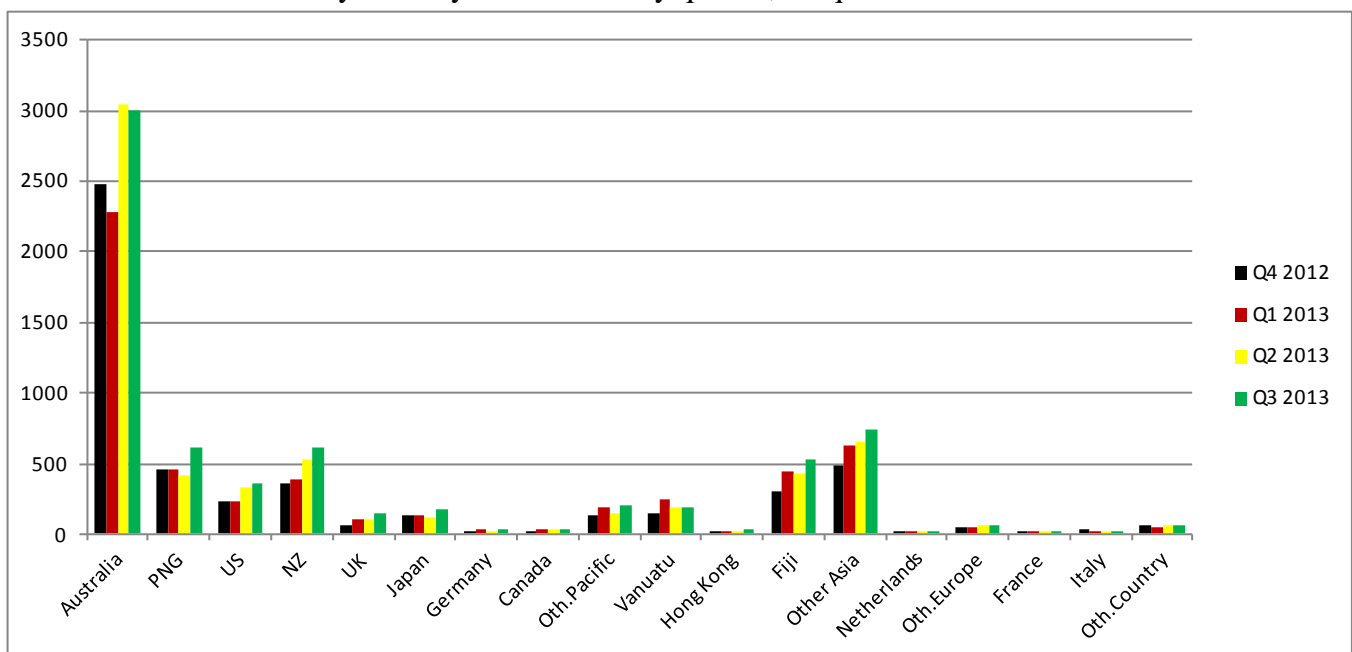


Table 3: Visitor Arrivals by Month: 2006 – 3<sup>rd</sup> Quarter 2013

Month	2006	2007	2008	2009	2010	2011	2012	2013
January	952	546	889	1,602	1,235	1,600	1,383	1,590
February	838	1,020	1,282	1,422	1,209	1,658	1,591	1,544
March	972	1,251	802	1,249	1,766	1,861	1,677	2,184
April	994	1,452	1,388	1,499	1,820	1,736	1,839	2,021
May	858	1,137	1,261	1,393	1,137	1,760	1,968	1,857
June	1,289	1,265	1,552	1,724	1,797	2,009	3,122	2,317
July	865	822	1,692	1,603	2,264	2,185	2,865	2,574
August	892	1,299	1,469	1,520	1,845	1,900	2,133	2,022
September	681	1,299	1,457	1,659	2,153	2,159	2,309	2,291
October	942	1,260	1,399	1,709	1,813	1,931	1,929	
November	1,118	1,246	1,545	1,475	1,624	2,195	1,545	
December	1,081	1,151	1,528	1,405	1,858	1,947	1,564	
<b>Total</b>	<b>11,482</b>	<b>13,748</b>	<b>16,264</b>	<b>18,260</b>	<b>20,521</b>	<b>22,941</b>	<b>23,925</b>	<b>18,400</b>
Percentage								
January	8.3	4.0	5.5	8.8	5.5	7.0	5.8	8.6
February	7.3	7.4	7.9	7.8	5.4	7.2	6.6	8.4
March	8.5	9.1	4.9	6.8	7.8	8.1	7.0	11.9
April	8.7	10.6	8.5	8.2	8.1	7.6	7.7	11.0
May	7.5	8.3	7.8	7.6	5.0	7.7	8.2	10.1
June	11.2	9.2	9.5	9.4	8.0	8.8	13.0	12.6
July	7.5	6.0	10.4	8.8	10.0	9.5	12.0	14.0
August	7.8	9.4	9.0	8.3	8.2	8.3	8.9	11.0
September	5.9	9.4	9.0	9.1	9.6	9.4	9.7	12.5
October	8.2	9.2	8.6	9.4	8.0	8.4	8.1	
November	9.7	9.1	9.5	8.1	7.2	9.6	6.5	
December	9.4	8.4	9.4	7.7	8.2	8.5	6.5	
<b>Total</b>	<b>100</b>	<b>100.0</b>	<b>100.0</b>	<b>100.0</b>	<b>100.0</b>	<b>100.0</b>	<b>100.0</b>	<b>100.0</b>

Chart 3: Visitors Arrival by month, 2010 – 3<sup>rd</sup> quarter 2013

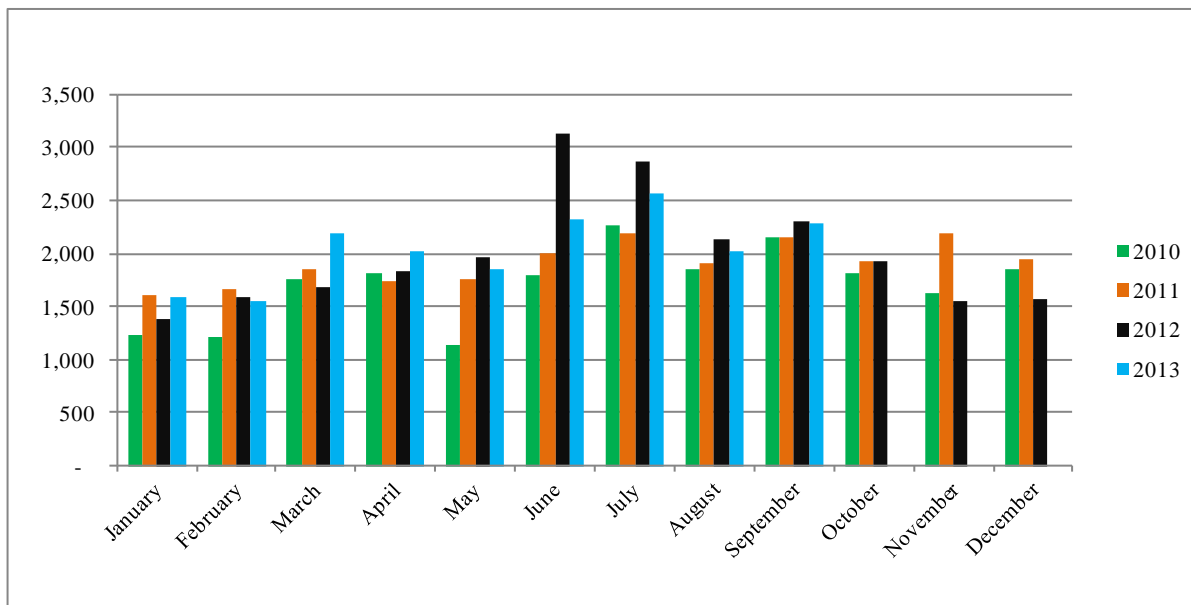




Table 4: Visitors, classified as tourists by Country of residence by year, quarter and average length of stay: 1<sup>st</sup> Quarter 2011 – 3<sup>rd</sup> Quarter 2013

Country of Usual Residence	2011								2012								2013					
	Quarter 1		Quarter 2		Quarter 3		Quarter 4		Quarter 1		Quarter 2		Quarter 3		Quarter 4		Quarter 1		Quarter 2		Quarter 3	
	tourist	day	tourist	day	tourist	day	tourist	day	tourist	day	tourist	day	tourist	day	tourist	day	tourist	day	tourist	day	tourist	day
Australia	611	14	872	13	1,034	15	915	20	511	12	891	13	1193	12	808	14	507	13	981	11	943	12
PNG	34	13	53	15	72	16	67	30	23	14	54	13	58	15	66	20	43	10	39	12	43	10
US	91	11	104	16	191	13	102	13	65	10	182	12	251	10	116	11	75	11	136	12	182	13
NZ	29	23	56	15	102	17	70	20	24	11	69	13	115	12	57	16	30	15	95	15	62	18
UK	26	19	49	25	42	23	34	16	25	18	28	32	36	20	40	18	31	25	39	21	76	23
Japan	45	12	24	10	95	15	51	7	53	7	41	7	92	9	52	7	38	13	33	19	59	10
Germany	15	35	12	13	24	17	17	12	14	18	21	20	15	12	12	17	25	13	9	11	21	11
Canada	27	17	8	23	14	14	28	15	8	15	10	22	12	15	13	11	14	20	12	10	14	16
Oth.Pacific	19	15	14	12	15	16	21	23	11	14	38	14	68	13	7	17	18	10	16	15	21	15
Vanuatu	20	15	13	14	20	17	27	25	21	7	15	10	19	10	25	19	50	6	17	8	12	13
Hong Kong	5	5	7	8	11	12	23	19	3	18	6	16	8	9	10	20	6	11	8	21	8	14
Fiji	15	13	23	18	26	20	20	21	22	19	29	26	42	20	22	32	29	22	12	18	14	9
Oth.Asia	127	20	103	25	142	22	81	16	107	22	101	22	126	29	104	24	108	21	119	25	164	15
Netherlands	6	34	5	18	9	20	10	20	5	21	7	27	10	14	7	15	1	7	2	13	6	23
Oth.Europe	35	18	32	14	37	18	26	18	43	14	43	14	86	13	17	20	25	13	33	14	30	13
France	4	28	5	17	15	20	4	12	14	16	2	25	19	13	1	14	9	16	8	8	13	17
Italy	5	22	5	10	6	18	18	19	4	21	1	30	28	13	13	54	4	32	7	25	7	11
Oth.Country	23	12	14	21	26	16	44	16	14	9	9	18	30	12	20	12	9	14	22	7	17	12
Total	1,137	16	1,399	15	1,881	16	1,558	15	967	13	1,547	14	2,208	13	1,390	16	1,022	14	1,588	13	1,692	13

Chart 4: Tourist Arrivals by Country of Residence, 3<sup>rd</sup> Quarter 2013

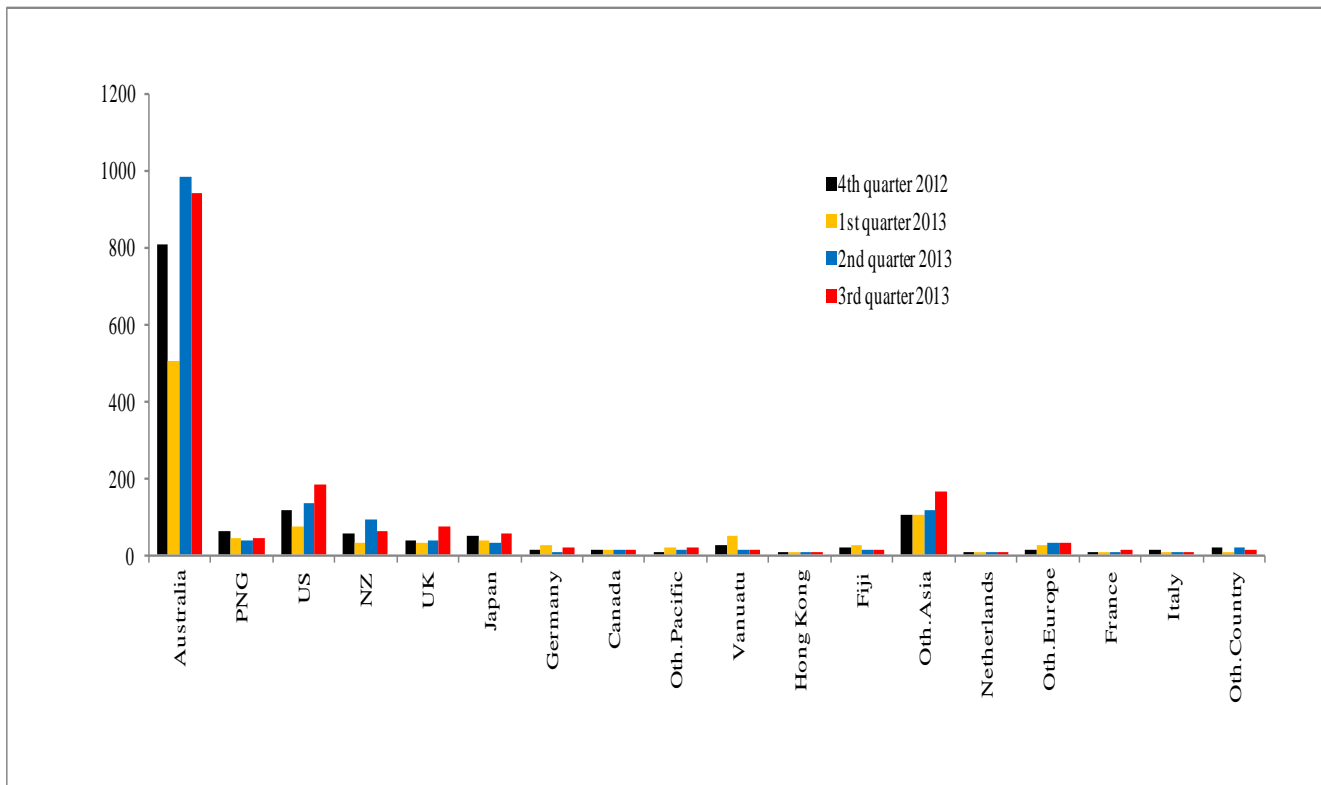


Table 5: Visitor Arrivals by Country of Residence by Purpose of Visit by sex: 3<sup>rd</sup> Quarter 2013

Country of Usual Residence	Business & Conference			Holiday & Vocation			Transit & Stopover			Visit friends/Relatives			Other			Total		
	M	F	T	M	F	T	M	F	T	M	F	T	M	F	T	M	F	All
Australia	643	168	811	518	425	943	13	-	13	227	203	430	625	179	804	2,026	975	3,001
PNG	253	75	328	25	18	43	10	5	15	21	15	36	173	26	199	482	139	621
US	60	14	74	102	80	182	5	-	5	19	10	29	52	15	67	238	119	357
NZ	196	62	258	47	15	62	47	12	59	47	31	78	117	33	150	454	153	607
UK	18	7	25	43	33	76	-	-	-	16	12	28	18	5	23	95	57	152
Japan	81	6	87	49	10	59	1	-	1	11	3	14	16	2	18	158	21	179
Germany	2	-	2	14	7	21	-	-	-	5	1	6	4	2	6	25	10	35
Canada	6	1	7	10	4	14	-	-	-	1	2	3	9	7	16	26	14	40
Oth.Pacific	80	29	109	11	10	21	9	1	10	17	8	25	27	10	37	144	58	202
Vanuatu	50	13	63	5	7	12	8	1	9	14	15	29	65	13	78	142	49	191
Hong Kong	10	5	15	7	1	8	1	-	1	4	3	7	2	-	2	24	9	33
Fiji	192	57	249	8	6	14	1	1	2	29	8	37	190	36	226	420	108	528
Oth.Asia	226	35	261	131	33	164	7	-	7	67	11	78	193	40	233	624	119	743
Netherlands	9	3	12	3	3	6	-	-	-	1	2	3	2	1	3	15	9	24
Oth.Europe	17	4	21	21	9	30	-	-	-	3	5	8	9	2	11	50	20	70
France	8	1	9	11	2	13	-	-	-	1	-	1	2	1	3	22	4	26
Italy	1	-	1	7	-	7	-	-	-	3	1	4	1	3	4	12	4	16
Oth.Country	18	2	20	11	6	17	1	-	1	4	1	5	16	3	19	50	12	62
<b>Total</b>	<b>1,870</b>	<b>482</b>	<b>2,352</b>	<b>1,023</b>	<b>669</b>	<b>1,692</b>	<b>103</b>	<b>20</b>	<b>123</b>	<b>490</b>	<b>331</b>	<b>821</b>	<b>1,521</b>	<b>378</b>	<b>1,899</b>	<b>5,007</b>	<b>1,880</b>	<b>6,887</b>
Percentage																		
Australia	21.4	5.6	27.0	17.3	14.2	31.4	0.4	-	0.4	7.6	6.8	14.3	20.8	6.0	26.8	67.5	32.5	100.0
PNG	40.7	12.1	52.8	4.0	2.9	6.9	1.6	0.8	2.4	3.4	2.4	5.8	27.9	4.2	32.0	77.6	22.4	100.0
US	16.8	3.9	20.7	28.6	22.4	51.0	1.4	-	1.4	5.3	2.8	8.1	14.6	4.2	18.8	66.7	33.3	100.0
NZ	32.3	10.2	42.5	7.7	2.5	10.2	7.7	2.0	9.7	7.7	5.1	12.9	19.3	5.4	24.7	74.8	25.2	100.0
UK	11.8	4.6	16.4	28.3	21.7	50.0	-	-	-	10.5	7.9	18.4	11.8	3.3	15.1	62.5	37.5	100.0
Japan	45.3	3.4	48.6	27.4	5.6	33.0	0.6	-	0.6	6.1	1.7	7.8	8.9	1.1	10.1	88.3	11.7	100.0
Germany	5.7	-	5.7	40.0	20.0	60.0	-	-	-	14.3	2.9	17.1	11.4	5.7	17.1	71.4	28.6	100.0
Canada	15.0	2.5	17.5	25.0	10.0	35.0	-	-	-	2.5	5.0	7.5	22.5	17.5	40.0	65.0	35.0	100.0
Oth.Pacific	39.6	14.4	54.0	5.4	5.0	10.4	4.5	0.5	5.0	8.4	4.0	12.4	13.4	5.0	18.3	71.3	28.7	100.0
Vanuatu	26.2	6.8	33.0	2.6	3.7	6.3	4.2	0.5	4.7	7.3	7.9	15.2	34.0	6.8	40.8	74.3	25.7	100.0
Hong Kong	30.3	15.2	45.5	21.2	3.0	24.2	3.0	-	3.0	12.1	9.1	21.2	6.1	-	6.1	72.7	27.3	100.0
Fiji	36.4	10.8	47.2	1.5	1.1	2.7	0.2	0.2	0.4	5.5	1.5	7.0	36.0	6.8	42.8	79.5	20.5	100.0
Oth.Asia	30.4	4.7	35.1	17.6	4.4	22.1	0.9	-	0.9	9.0	1.5	10.5	26.0	5.4	31.4	84.0	16.0	100.0
Netherlands	37.5	12.5	50.0	12.5	12.5	25.0	-	-	-	4.2	8.3	12.5	8.3	4.2	12.5	62.5	37.5	100.0
Oth.Europe	24.3	5.7	30.0	30.0	12.9	42.9	-	-	-	4.3	7.1	11.4	12.9	2.9	15.7	71.4	28.6	100.0
France	30.8	3.8	34.6	42.3	7.7	50.0	-	-	-	3.8	-	3.8	7.7	3.8	11.5	84.6	15.4	100.0
Italy	6.3	-	6.3	43.8	-	43.8	-	-	-	18.8	6.3	25.0	6.3	18.8	25.0	75.0	25.0	100.0
Oth.Country	29.0	3.2	32.3	17.7	9.7	27.4	1.6	-	1.6	6.5	1.6	8.1	25.8	4.8	30.6	80.6	19.4	100.0
<b>Total</b>	<b>27.2</b>	<b>7.0</b>	<b>34.2</b>	<b>14.9</b>	<b>9.7</b>	<b>24.6</b>	<b>1.5</b>	<b>0.3</b>	<b>1.8</b>	<b>7.1</b>	<b>4.8</b>	<b>11.9</b>	<b>22.1</b>	<b>5.5</b>	<b>27.6</b>	<b>72.7</b>	<b>27.3</b>	<b>100.0</b>

Chart 5: Visitors Arrival by Country of Residence by Purpose of Visit, 3<sup>rd</sup> quarter 2013

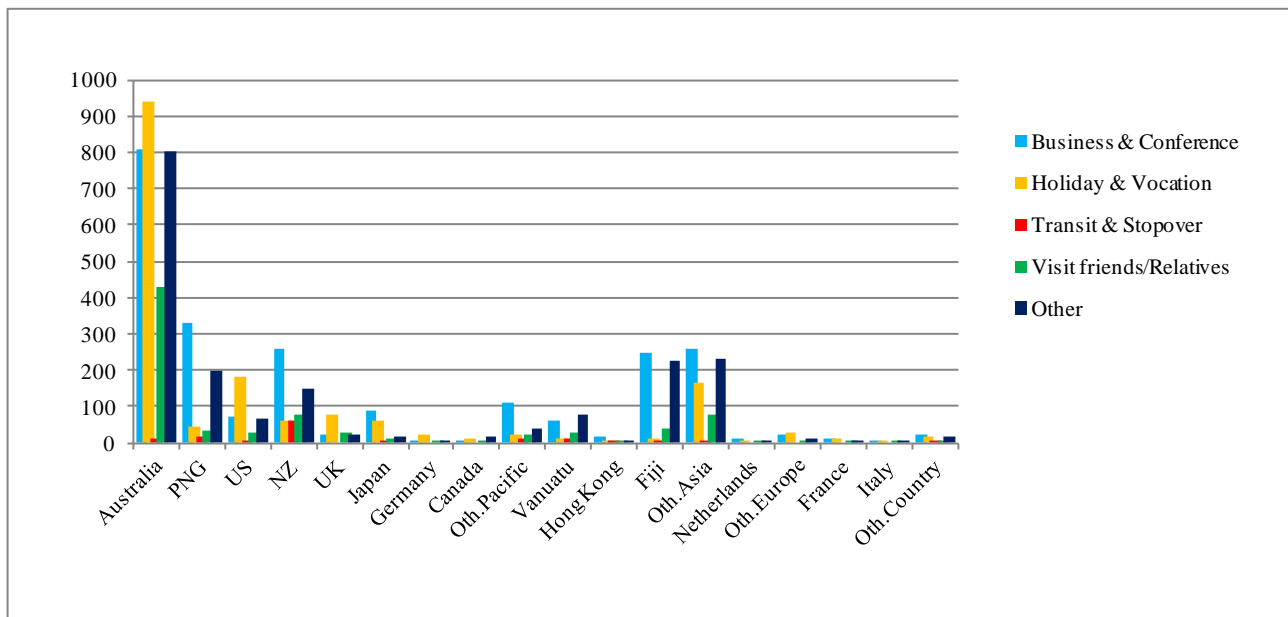


Table 6: Visitor Arrivals by Country of Residence by Age Groups by Sex: 3<sup>rd</sup> Quarter 2013

Country of Usual Residence	Age-Group																		
	0-14		15-24		25-34		35-44		45-54		55-64		65+		Not Stated		Total		
	M	F	M	F	M	F	M	F	M	F	M	F	M	F	M	F	M	F	All
Australia	43	59	131	134	284	189	461	163	472	170	355	147	194	59	86	54	2,026	975	3,001
PNG	1	3	16	12	77	38	142	36	141	38	67	4	12	-	26	8	482	139	621
US	4	2	12	14	33	16	36	13	54	20	52	36	35	11	12	7	238	119	357
NZ	6	6	30	17	66	39	74	29	130	27	103	25	35	6	10	4	454	153	607
UK	4	7	17	13	15	7	14	10	22	11	14	4	8	3	1	2	95	57	152
Japan	-	1	14	3	18	5	42	6	36	4	27	2	13	-	8	-	158	21	179
Germany	-	-	2	1	4	4	2	2	7	1	8	1	1	1	1	-	25	10	35
Canada	1	2	3	-	6	3	2	2	6	1	4	2	3	2	1	2	26	14	40
Oth.Pacific	3	1	7	6	19	8	39	18	39	15	19	6	10	3	8	1	144	58	202
Vanuatu	1	4	18	4	15	10	41	13	35	8	18	3	4	3	10	4	142	49	191
Hong Kong	-	1	-	-	2	2	7	4	7	2	4	-	4	-	-	-	24	9	33
Fiji	1	3	13	4	95	26	114	29	107	22	47	16	19	2	24	6	420	108	528
Oth.Asia	6	1	36	22	132	32	153	23	157	17	94	18	20	3	26	3	624	119	743
Netherlands	-	-	1	2	1	2	-	2	9	2	3	-	1	-	-	1	15	9	24
Oth.Europe	1	1	3	3	15	7	16	3	7	5	6	1	-	-	2	-	50	20	70
France	-	-	3	1	4	1	4	-	5	1	3	-	3	-	-	1	22	4	26
Italy	-	-	1	-	2	1	2	1	5	-	2	1	-	1	-	-	12	4	16
Oth.Country	-	-	-	2	14	4	12	1	14	4	8	1	2	-	-	-	50	12	62
Total	71	91	307	238	802	394	1161	355	1253	348	834	267	364	94	215	93	5,007	1,880	6,887
	Percentage																		
Australia	1.4	2.0	4.4	4.5	9.5	6.3	15.4	5.4	15.7	5.7	11.8	4.9	6.5	2.0	2.9	1.8	67.5	32.5	100.0
PNG	0.2	0.5	2.6	1.9	12.4	6.1	22.9	5.8	22.7	6.1	10.8	0.6	1.9	-	4.2	1.3	77.6	22.4	100.0
US	1.1	0.6	3.4	3.9	9.2	4.5	10.1	3.6	15.1	5.6	14.6	10.1	9.8	3.1	3.4	2.0	66.7	33.3	100.0
NZ	1.0	1.0	4.9	2.8	10.9	6.4	12.2	4.8	21.4	4.4	17.0	4.1	5.8	1.0	1.6	0.7	74.8	25.2	100.0
UK	2.6	4.6	11.2	8.6	9.9	4.6	9.2	6.6	14.5	7.2	9.2	2.6	5.3	2.0	0.7	1.3	62.5	37.5	100.0
Japan	-	0.6	7.8	1.7	10.1	2.8	23.5	3.4	20.1	2.2	15.1	1.1	7.3	-	4.5	-	88.3	11.7	100.0
Germany	-	-	5.7	2.9	11.4	11.4	5.7	5.7	20.0	2.9	22.9	2.9	2.9	2.9	2.9	-	71.4	28.6	100.0
Canada	2.5	5.0	7.5	-	15.0	7.5	5.0	5.0	15.0	2.5	10.0	5.0	7.5	5.0	2.5	5.0	65.0	35.0	100.0
Oth.Pacific	1.5	0.5	3.5	3.0	9.4	4.0	19.3	8.9	19.3	7.4	9.4	3.0	5.0	1.5	4.0	0.5	71.3	28.7	100.0
Vanuatu	0.5	2.1	9.4	2.1	7.9	5.2	21.5	6.8	18.3	4.2	9.4	1.6	2.1	1.6	5.2	2.1	74.3	25.7	100.0
Hong Kong	-	3.0	-	-	6.1	6.1	21.2	12.1	21.2	6.1	12.1	-	12.1	-	-	-	72.7	27.3	100.0
Fiji	0.2	0.6	2.5	0.8	18.0	4.9	21.6	5.5	20.3	4.2	8.9	3.0	3.6	0.4	4.5	1.1	79.5	20.5	100.0
Oth.Asia	0.8	0.1	4.8	3.0	17.8	4.3	20.6	3.1	21.1	2.3	12.7	2.4	2.7	0.4	3.5	0.4	84.0	16.0	100.0
Netherlands	-	-	4.2	8.3	4.2	8.3	-	8.3	37.5	8.3	12.5	-	4.2	-	-	4.2	62.5	37.5	100.0
Oth.Europe	1.4	1.4	4.3	4.3	21.4	10.0	22.9	4.3	10.0	7.1	8.6	1.4	-	-	2.9	-	71.4	28.6	100.0
France	-	-	11.5	3.8	15.4	3.8	15.4	-	19.2	3.8	11.5	-	11.5	-	-	3.8	84.6	15.4	100.0
Italy	-	-	6.3	-	12.5	6.3	12.5	6.3	31.3	-	12.5	6.3	-	6.3	-	-	75.0	25.0	100.0
Oth.Country	-	-	-	3.2	22.6	6.5	19.4	1.6	22.6	6.5	12.9	1.6	3.2	-	-	-	80.6	19.4	100.0
Total	1.0	1.3	4.5	3.5	11.6	5.7	16.9	5.2	18.2	5.1	12.1	3.9	5.3	1.4	3.1	1.4	72.7	27.3	100.0

Chart 6: Visitor Arrivals by Age group category by sex, 3<sup>rd</sup> quarter 2013

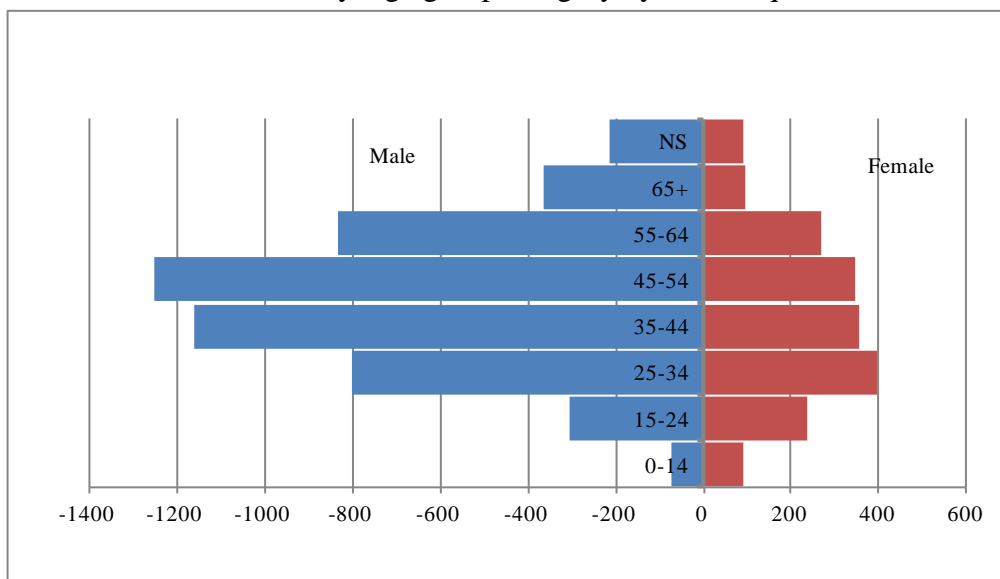


Table 7: Visitor Arrivals by Country of Residence by Occupation and Sex: 3<sup>rd</sup> Quarter 2013

Country of Usual Residence	Professional and Technical		Administration and Managerial		Clerical & Related Work		Sales Worker		Service Worker		Agriculture Forestry Fishery		Production & Related Work		Other		No Work		Total		
	M	F	M	F	M	F	M	F	M	F	M	F	M	F	M	F	M	F	M	F	All
	Australia	698	374	234	65	7	26	13	2	98	44	39	2	110	4	708	352	119	106	2,026	975
PNG	103	46	69	13	2	2	8	1	9	7	23	2	39	6	219	56	10	6	482	139	621
US	70	34	12	4	-	-	3	-	14	7	1	1	3	-	110	47	25	26	238	119	357
NZ	116	46	59	11	10	10	3	1	43	17	3	-	20	-	185	61	15	7	454	153	607
UK	51	26	11	3	1	-	-	-	3	4	-	-	-	-	22	16	7	8	95	57	152
Japan	53	10	10	-	4	-	4	-	1	2	3	-	-	-	70	9	13	-	158	21	179
Germany	11	8	-	-	2	-	-	-	-	-	-	-	1	-	9	2	2	-	25	10	35
Canada	9	8	1	-	-	-	-	-	1	-	-	-	-	-	13	4	2	2	26	14	40
Oth.Pacific	32	11	7	-	6	1	-	-	13	6	-	1	5	-	74	35	7	4	144	58	202
Vanuatu	52	10	11	6	2	3	-	-	5	6	1	1	3	-	63	14	5	9	142	49	191
Hong Kong	2	4	4	-	2	1	4	-	-	-	-	-	-	-	11	3	1	1	24	9	33
Fiji	80	29	38	8	3	-	4	-	122	8	22	-	2	-	141	56	8	7	420	108	528
Oth.Asia	117	30	73	11	5	2	68	9	6	9	18	2	48	1	248	42	41	13	624	119	743
Netherlands	6	2	3	1	-	-	-	-	-	-	-	-	-	-	6	6	-	-	15	9	24
Oth.Europe	16	7	4	2	-	1	1	-	1	2	-	-	2	-	21	8	5	-	50	20	70
France	11	3	-	-	-	-	-	-	-	-	-	-	-	-	9	1	2	-	22	4	26
Italy	4	3	-	-	1	1	-	-	-	-	-	-	-	-	7	-	-	-	12	4	16
Oth.Country	9	4	4	1	-	-	1	-	-	2	-	-	4	-	27	5	5	-	50	12	62
<b>Total</b>	<b>1440</b>	<b>655</b>	<b>540</b>	<b>125</b>	<b>45</b>	<b>47</b>	<b>109</b>	<b>13</b>	<b>316</b>	<b>114</b>	<b>110</b>	<b>9</b>	<b>237</b>	<b>11</b>	<b>1943</b>	<b>717</b>	<b>267</b>	<b>189</b>	<b>5,007</b>	<b>1,880</b>	<b>6,887</b>
<b>Percentage</b>																					
Australia	23.3	12.5	7.8	2.2	0.2	0.9	0.4	0.1	3.3	1.5	1.3	0.1	3.7	0.1	23.6	11.7	4.0	3.5	67.5	32.5	100.0
PNG	16.6	7.4	11.1	2.1	0.3	0.3	1.3	0.2	1.4	1.1	3.7	0.3	6.3	1.0	35.3	9.0	1.6	1.0	77.6	22.4	100.0
US	19.6	9.5	3.4	1.1	-	-	0.8	-	3.9	2.0	0.3	0.3	0.8	-	30.8	13.2	7.0	7.3	66.7	33.3	100.0
NZ	19.1	7.6	9.7	1.8	1.6	1.6	0.5	0.2	7.1	2.8	0.5	-	3.3	-	30.5	10.0	2.5	1.2	74.8	25.2	100.0
UK	33.6	17.1	7.2	2.0	0.7	-	-	-	2.0	2.6	-	-	-	-	14.5	10.5	4.6	5.3	62.5	37.5	100.0
Japan	29.6	5.6	5.6	-	2.2	-	2.2	-	0.6	1.1	1.7	-	-	-	39.1	5.0	7.3	-	88.3	11.7	100.0
Germany	31.4	22.9	-	-	5.7	-	-	-	-	-	-	-	2.9	-	25.7	5.7	5.7	-	71.4	28.6	100.0
Canada	22.5	20.0	2.5	-	0.0	-	-	-	2.5	-	-	-	-	-	32.5	10.0	5.0	5.0	65.0	35.0	100.0
Oth.Pacific	15.8	5.4	3.5	-	3.0	0.5	-	-	6.4	3.0	-	0.5	2.5	-	36.6	17.3	3.5	2.0	71.3	28.7	100.0
Vanuatu	27.2	5.2	5.8	3.1	1.0	1.6	-	-	2.6	3.1	0.5	0.5	1.6	-	33.0	7.3	2.6	4.7	74.3	25.7	100.0
Hong Kong	6.1	12.1	12.1	-	6.1	3.0	12.1	-	-	-	-	-	-	-	33.3	9.1	3.0	3.0	72.7	27.3	100.0
Fiji	15.2	5.5	7.2	1.5	0.6	-	0.8	-	23.1	1.5	4.2	-	0.4	-	26.7	10.6	1.5	1.3	79.5	20.5	100.0
Oth.Asia	15.7	4.0	9.8	1.5	0.7	0.3	9.2	1.2	0.8	1.2	2.4	0.3	6.5	0.1	33.4	5.7	5.5	1.7	84.0	16.0	100.0
Netherlands	25.0	8.3	12.5	4.2	-	-	-	-	-	-	-	-	-	-	25.0	25.0	-	-	62.5	37.5	100.0
Oth.Europe	22.9	10.0	5.7	2.9	-	1.4	1.4	-	1.4	2.9	-	-	2.9	-	30.0	11.4	7.1	-	71.4	28.6	100.0
France	42.3	11.5	-	-	-	-	-	-	-	-	-	-	-	-	34.6	3.8	7.7	-	84.6	15.4	100.0
Italy	25.0	18.8	-	-	6.3	6.3	-	-	-	-	-	-	-	-	43.8	-	-	-	75.0	25.0	100.0
Oth.Country	14.5	6.5	6.5	1.6	-	-	1.6	-	-	3.2	-	-	6.5	-	43.5	8.1	8.1	-	80.6	19.4	100.0
<b>Total</b>	<b>20.9</b>	<b>9.5</b>	<b>7.8</b>	<b>1.8</b>	<b>0.7</b>	<b>0.7</b>	<b>1.6</b>	<b>0.2</b>	<b>4.6</b>	<b>1.7</b>	<b>1.6</b>	<b>0.1</b>	<b>3.4</b>	<b>0.2</b>	<b>28.2</b>	<b>10.4</b>	<b>3.9</b>	<b>2.7</b>	<b>72.7</b>	<b>27.3</b>	<b>100.0</b>

Chart 7: Visitors Arrival by occupation by sex, 3<sup>rd</sup> quarter 2013

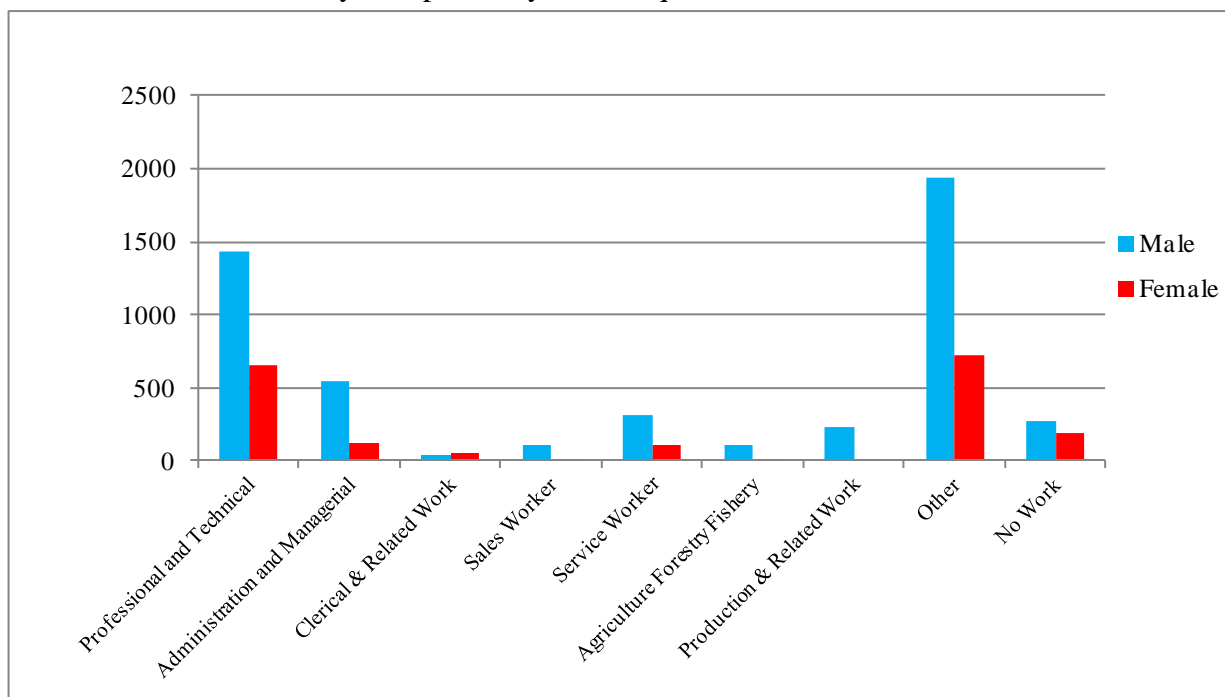
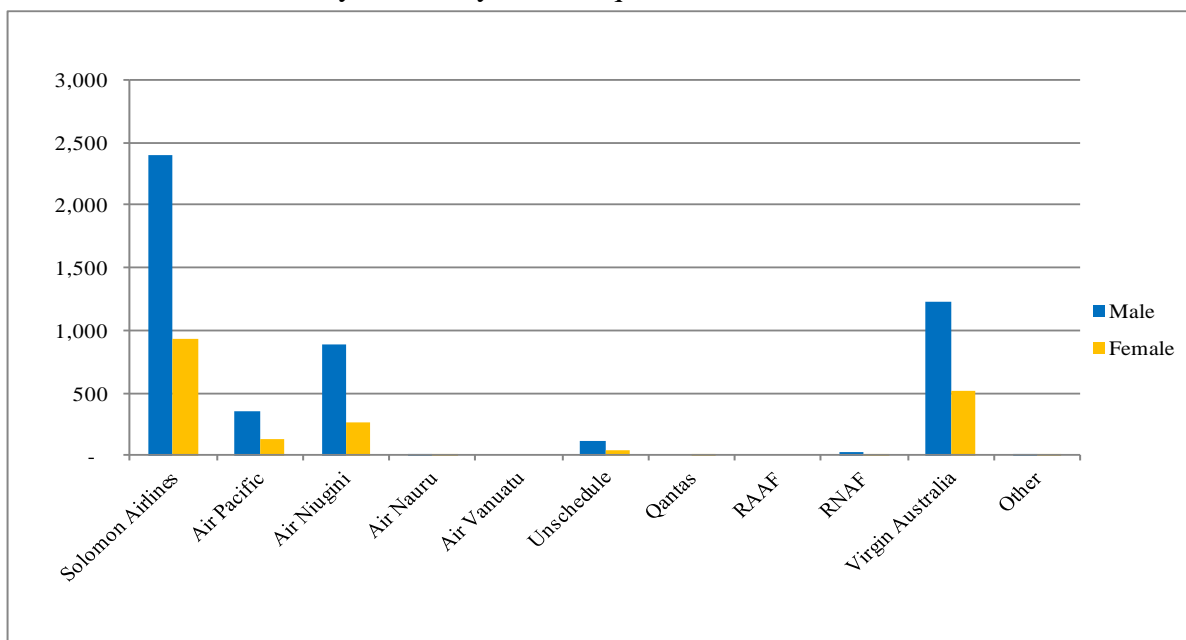


Table 8: Visitor Arrivals by Country of residence by Carrier by Sex: 3<sup>rd</sup> Quarter 2013

Country of Usual Residence	Solomon Airlines		Air Pacific		Air Niugini		Air Nauru		Air Vanuatu		Unschedule		Qantas		RAAF		RCAF		Virgin Australia		Other		Total			
	M	F	M	F	M	F	M	F	M	F	M	F	M	F	M	F	M	F	M	F	M	F	M	F	All	
	Australia	1150	606	15	7	34	8	-	1	-	-	25	1	-	-	-	-	-	-	802	352	-	-	2,026	975	3,001
PNG	43	10	3	-	422	123	-	-	-	-	-	-	-	1	-	-	-	-	14	5	-	-	482	139	621	
US	89	26	68	45	45	25	-	-	-	-	-	-	-	-	-	-	-	-	36	23	-	-	238	119	357	
NZ	162	48	5	5	20	3	1	-	-	-	69	30	-	-	-	-	-	26	10	171	57	-	-	454	153	607
UK	61	30	3	-	3	1	-	-	-	-	-	-	-	-	-	-	-	-	28	26	-	-	95	57	152	
Japan	70	12	9	2	62	5	-	-	-	-	-	-	-	-	-	-	-	-	17	2	-	-	158	21	179	
Germany	18	3	-	-	1	1	-	-	-	-	-	-	-	-	-	-	-	-	6	6	-	-	25	10	35	
Canada	8	4	4	5	7	3	-	-	-	-	-	-	-	-	-	-	-	-	6	1	1	1	26	14	40	
Oth.Pacific	67	22	21	11	24	11	-	-	-	-	9	1	-	-	-	-	-	-	23	13	-	-	144	58	202	
Vanuatu	90	26	39	17	7	2	1	-	-	-	2	2	-	-	-	-	-	-	3	2	-	-	142	49	191	
Hong Kong	14	3	3	1	6	4	-	-	-	-	-	-	-	-	-	-	-	-	1	1	-	-	24	9	33	
Fiji	184	37	147	36	87	33	1	-	-	-	-	1	-	-	-	-	-	-	1	-	-	1	420	108	528	
Oth.Asia	360	66	17	2	151	36	-	-	-	-	4	-	-	-	-	-	-	-	92	15	-	-	624	119	743	
Netherlands	10	7	-	-	4	-	-	-	-	-	-	-	-	1	-	-	-	-	1	1	-	-	15	9	24	
Oth.Europe	24	11	4	3	5	2	-	-	-	-	-	-	-	-	-	-	-	-	17	3	-	1	50	20	70	
France	10	1	1	-	4	1	-	-	-	-	-	-	-	-	-	-	-	-	7	2	-	-	22	4	26	
Italy	8	3	3	-	-	-	-	-	-	-	-	-	-	-	-	-	-	-	1	1	-	-	12	4	16	
Oth.Country	31	10	5	1	9	-	-	-	-	-	-	-	-	-	-	-	-	-	5	1	-	-	50	12	62	
<b>Total</b>	<b>2,399</b>	<b>925</b>	<b>347</b>	<b>135</b>	<b>891</b>	<b>258</b>	<b>3</b>	<b>1</b>	<b>-</b>	<b>-</b>	<b>109</b>	<b>35</b>	<b>-</b>	<b>2</b>	<b>-</b>	<b>-</b>	<b>-</b>	<b>26</b>	<b>10</b>	<b>1,231</b>	<b>511</b>	<b>1</b>	<b>3</b>	<b>5,007</b>	<b>1,880</b>	<b>6,887</b>
	<b>Percentage</b>																									
Australia	38.3	20.2	0.5	0.2	1.1	0.3	-	-	-	-	0.8	-	-	-	-	-	-	-	26.7	11.7	-	-	67.5	32.5	100.0	
PNG	6.9	1.6	0.5	-	68.0	19.8	-	-	-	-	-	-	-	0.2	-	-	-	-	2.3	0.8	-	-	77.6	22.4	100.0	
US	24.9	7.3	19.0	12.6	12.6	7.0	-	-	-	-	-	-	-	-	-	-	-	-	10.1	6.4	-	-	66.7	33.3	100.0	
NZ	26.7	7.9	0.8	0.8	3.3	0.5	0.2	-	-	-	11.4	4.9	-	-	-	-	-	4.3	1.6	28.2	9.4	-	-	74.8	25.2	100.0
UK	40.1	19.7	2.0	-	2.0	0.7	-	-	-	-	-	-	-	-	-	-	-	-	18.4	17.1	-	-	62.5	37.5	100.0	
Japan	39.1	6.7	5.0	1.1	34.6	2.8	-	-	-	-	-	-	-	-	-	-	-	-	9.5	1.1	-	-	88.3	11.7	100.0	
Germany	51.4	8.6	-	-	2.9	2.9	-	-	-	-	-	-	-	-	-	-	-	-	17.1	17.1	-	-	71.4	28.6	100.0	
Canada	20.0	10.0	10.0	12.5	17.5	7.5	-	-	-	-	-	-	-	-	-	-	-	-	15.0	2.5	2.5	2.5	65.0	35.0	100.0	
Oth.Pacific	33.2	10.9	10.4	5.4	11.9	5.4	-	-	-	-	4.5	0.5	-	-	-	-	-	-	11.4	6.4	-	-	71.3	28.7	100.0	
Vanuatu	47.1	13.6	20.4	8.9	3.7	1.0	0.5	-	-	-	1.0	1.0	-	-	-	-	-	-	1.6	1.0	-	-	74.3	25.7	100.0	
Hong Kong	42.4	9.1	9.1	3.0	18.2	12.1	-	-	-	-	-	-	-	-	-	-	-	-	3.0	3.0	-	-	72.7	27.3	100.0	
Fiji	34.8	7.0	27.8	6.8	16.5	6.3	0.2	-	-	-	-	0.2	-	-	-	-	-	-	0.2	-	-	0.2	79.5	20.5	100.0	
Oth.Asia	48.5	8.9	2.3	0.3	20.3	4.8	-	-	-	-	0.5	-	-	-	-	-	-	-	12.4	2.0	-	-	84.0	16.0	100.0	
Netherlands	41.7	29.2	-	-	16.7	-	-	-	-	-	-	-	-	-	4.2	-	-	-	4.2	4.2	-	-	62.5	37.5	100.0	
Oth.Europe	34.3	15.7	5.7	4.3	7.1	2.9	-	-	-	-	-	-	-	-	-	-	-	-	24.3	4.3	-	1.4	71.4	28.6	100.0	
France	38.5	3.8	3.8	-	15.4	3.8	-	-	-	-	-	-	-	-	-	-	-	-	26.9	7.7	-	-	84.6	15.4	100.0	
Italy	50.0	18.8	18.8	-	-	-	-	-	-	-	-	-	-	-	-	-	-	-	6.3	6.3	-	-	75.0	25.0	100.0	
Oth.Country	50.0	16.1	8.1	1.6	14.5	-	-	-	-	-	-	-	-	-	-	-	-	-	8.1	1.6	-	-	80.6	19.4	100.0	
<b>Total</b>	<b>34.8</b>	<b>13.4</b>	<b>5.0</b>	<b>2.0</b>	<b>12.9</b>	<b>3.7</b>	<b>-</b>	<b>-</b>	<b>-</b>	<b>-</b>	<b>1.6</b>	<b>0.5</b>	<b>-</b>	<b>-</b>	<b>-</b>	<b>-</b>	<b>-</b>	<b>0.4</b>	<b>0.1</b>	<b>17.9</b>	<b>7.4</b>	<b>-</b>	<b>-</b>	<b>72.7</b>	<b>27.3</b>	<b>100.0</b>

Chart 8: Visitor Arrivals by Carrier by Sex, 3<sup>rd</sup> quarter 2013



## Appendix 1

### Concepts and Definitions

Persons entering Solomon Islands classify themselves into three (3) categories; returning resident, intending resident, and visitor. The concepts and definitions of the various categories are as follows:

#### (i) *Returning residents*

- Solomon Islanders and non-Solomon Islanders who have left the country and are returning to continue their residence.
- Non Solomon Islanders includes resident permit holders and Diplomatic officials, and their immediate family members. This may also includes legal or official arrangements that fall out side of the above.

#### (ii) *Intending residents*

- Non-Solomon Islander who wish to take up residence in Solomon Islands.

#### (iii) *Visitors*

- Any traveller who is not a Solomon Islander and who purposely spend less time – at most a period of 120 days<sup>2</sup>, in the country and with the intention and purpose of visiting.
- *Tourist*
  - Visitors who further classify themselves stating their visit are purposely for '*holiday and vacation*'. This exclude, tourist arrivals by cruise ships.
  - Wife accompanying husband on business purpose is a private tourist unless also working.
  - *World Tourism Organization WTO definition of Tourism:*  
*It comprises the activities of persons travelling to and staying in places outside their usual environment for not more than a year for leisure, business and other purposes not related to the exercise of an activity remunerated from within the place visited*<sup>3</sup>.

#### ( iv) *Markets*

- *Country of Usual Residence*

---

<sup>2</sup> Solomon Islands 1993 Statistical Yearbook.

<sup>3</sup> Dimensions of Hospitality, Study guide 1. p17

Appendix 2

Table 9: Intending Resident Arrivals by Country of Residence by Occupation and Sex: 3<sup>rd</sup> Quarter 2013

Country of Usual Residence	Professional and Technical		Administration and Managerial		Clerical & Related Work		Sales Worker		Service Worker		Agriculture Forestry Fishery		Production & Related Work		Other		No Work		Total		
	M	F	M	F	M	F	M	F	M	F	M	F	M	F	M	F	M	F	M	F	All
	Australia	26	33	10	6	1	-	-	-	22	5	-	-	-	-	61	42	16	9	136	95
PNG	10	3	7	-	-	-	-	-	1	2	1	-	-	-	10	1	4	1	33	7	40
US	4	2	-	-	-	-	-	-	-	-	1	-	-	-	4	3	2	-	11	5	16
NZ	8	4	-	-	-	-	-	-	3	3	-	-	-	-	7	7	2	2	20	16	36
UK	-	1	-	-	-	-	-	-	-	2	-	-	-	-	4	3	-	1	4	7	11
Japan	1	1	1	-	-	-	-	-	2	-	-	-	-	-	6	5	-	1	10	7	17
Germany	-	-	-	-	-	-	-	-	-	-	-	-	-	-	1	-	-	-	1	-	1
Canada	-	1	-	-	-	-	-	-	-	-	-	-	-	-	1	1	2	-	3	2	5
Oth.Pacific	6	-	1	1	-	-	-	-	7	-	-	-	-	-	2	3	1	1	17	5	22
Vanuatu	7	1	-	-	-	-	-	-	-	-	-	-	-	-	2	-	1	-	10	1	11
Hong Kong	-	-	-	-	-	-	-	-	-	-	-	-	-	-	-	1	-	-	-	1	1
Fiji	11	4	9	1	-	1	-	-	12	2	1	1	4	-	11	3	2	4	50	16	66
Oth.Asia	40	17	91	9	-	1	20	1	3	7	17	1	66	2	111	16	46	6	394	60	454
Netherlands	-	-	-	-	-	-	-	-	-	-	-	-	-	-	-	1	-	-	-	1	1
Oth.Europe	5	-	-	1	1	-	-	-	-	-	-	-	1	-	3	-	2	-	12	1	13
France	-	-	1	-	-	-	-	-	-	-	-	-	-	-	1	-	-	-	2	-	2
Italy	1	-	-	-	-	-	-	-	-	-	-	-	-	-	-	1	-	-	1	1	2
Oth.Country	5	-	1	1	-	-	-	-	-	1	1	-	-	-	4	1	-	-	11	3	14
Total	124	67	121	19	2	2	20	1	50	22	21	2	71	2	228	88	78	25	715	228	943
	Percentage																				
Australia	11.3	14.3	4.3	2.6	0.4	-	-	-	9.5	2.2	-	-	-	-	26.4	18.2	6.9	3.9	58.9	41.1	100.0
PNG	25.0	7.5	17.5	-	-	-	-	-	2.5	5.0	2.5	-	-	-	25.0	2.5	10.0	2.5	82.5	17.5	100.0
US	25.0	12.5	-	-	-	-	-	-	-	-	6.3	-	-	-	25.0	18.8	12.5	-	68.8	31.3	100.0
NZ	22.2	11.1	-	-	-	-	-	-	8.3	8.3	-	-	-	-	19.4	19.4	5.6	5.6	55.6	44.4	100.0
UK	-	9.1	-	-	-	-	-	-	-	18.2	-	-	-	-	36.4	27.3	-	9.1	36.4	63.6	100.0
Japan	5.9	5.9	5.9	-	-	-	-	-	11.8	-	-	-	-	-	35.3	29.4	-	5.9	58.8	41.2	100.0
Germany	-	-	-	-	-	-	-	-	-	-	-	-	-	-	100.0	-	-	-	100.0	0.0	100.0
Canada	-	20.0	-	-	-	-	-	-	-	-	-	-	-	-	20.0	20.0	40.0	-	60.0	40.0	100.0
Oth.Pacific	27.3	-	4.5	4.5	-	-	-	-	31.8	-	-	-	-	-	9.1	13.6	4.5	4.5	77.3	22.7	100.0
Vanuatu	63.6	9.1	-	-	-	-	-	-	-	-	-	-	-	-	18.2	-	9.1	-	90.9	9.1	100.0
Hong Kong	-	-	-	-	-	-	-	-	-	-	-	-	-	-	-	100.0	-	-	-	100.0	100.0
Fiji	16.7	6.1	13.6	1.5	-	1.5	-	-	18.2	3.0	1.5	1.5	6.1	-	16.7	4.5	3.0	6.1	75.8	24.2	100.0
Oth.Asia	8.8	3.7	20.0	2.0	-	0.2	4.4	0.2	0.7	1.5	3.7	0.2	14.5	0.4	24.4	3.5	10.1	1.3	86.8	13.2	100.0
Netherlands	-	-	-	-	-	-	-	-	-	-	-	-	-	-	-	100.0	-	-	-	100.0	100.0
Oth.Europe	38.5	-	-	7.7	7.7	-	-	-	-	-	-	-	7.7	-	23.1	-	15.4	-	92.3	7.7	100.0
France	-	-	50.0	-	-	-	-	-	-	-	-	-	-	-	50.0	-	-	-	100.0	0.0	100.0
Italy	50.0	-	-	-	-	-	-	-	-	-	-	-	-	-	-	50.0	-	-	50.0	50.0	100.0
Oth.Country	35.7	-	7.1	7.1	-	-	-	-	-	7.1	7.1	-	-	-	28.6	7.1	-	-	78.6	21.4	100.0
Total	13.1	7.1	12.8	2.0	0.2	0.2	2.1	0.1	5.3	2.3	2.2	0.2	7.5	0.2	24.2	9.3	8.3	2.7	75.8	24.2	100.0

Table 10: Intending Resident Arrivals by Country of Residence by Age Groups by Sex: 3<sup>rd</sup> Quarter 2013

Country of Usual Residence	Age-Group																Total		
	0-14		15-24		25-34		35-44		45-54		55-64		65+		Not Stated		M	F	All
	M	F	M	F	M	F	M	F	M	F	M	F	M	F					
Australia	15	12	2	2	17	22	33	28	30	15	26	9	4	-	9	7	136	95	231
PNG	3	1	1	1	8	1	4	4	9	-	2	-	-	-	6	-	33	7	40
US	1	-	-	-	1	1	-	-	4	3	5	1	-	-	-	-	11	5	16
NZ	1	-	1	-	1	2	4	-	6	6	4	6	1	-	2	2	20	16	36
UK	-	1	-	-	-	2	1	2	3	2	-	-	-	-	-	-	4	7	11
Japan	-	-	-	-	3	1	3	3	3	2	1	-	-	-	-	1	10	7	17
Germany	-	-	-	-	-	-	-	-	-	-	1	-	-	-	-	-	1	-	1
Canada	2	-	-	-	-	1	1	1	-	-	-	-	-	-	-	-	3	2	5
Oth.Pacific	2	-	1	-	4	-	5	-	4	4	-	-	-	-	1	1	17	5	22
Vanuatu	1	-	5	-	-	-	1	1	2	-	-	-	-	-	1	-	10	1	11
Hong Kong	-	-	-	-	-	-	-	-	-	1	-	-	-	-	-	-	-	1	1
Fiji	-	1	2	-	15	5	10	3	11	2	8	3	2	1	2	1	50	16	66
Oth.Asia	2	2	36	10	95	16	95	11	85	11	50	3	8	-	23	7	394	60	454
Netherlands	-	-	-	-	-	1	-	-	-	-	-	-	-	-	-	-	-	1	1
Oth.Europe	2	-	2	-	3	-	3	1	-	-	1	-	1	-	-	-	12	1	13
France	-	-	-	-	1	-	1	-	-	-	-	-	-	-	-	-	2	-	2
Italy	-	-	-	-	-	1	-	-	-	-	1	-	-	-	-	-	1	1	2
Oth.Country	-	-	-	-	2	-	-	2	5	1	3	-	1	-	-	-	11	3	14
<b>Total</b>	<b>29</b>	<b>17</b>	<b>50</b>	<b>13</b>	<b>150</b>	<b>53</b>	<b>161</b>	<b>56</b>	<b>162</b>	<b>47</b>	<b>102</b>	<b>22</b>	<b>17</b>	<b>1</b>	<b>44</b>	<b>19</b>	<b>715</b>	<b>228</b>	<b>943</b>
	<b>Percentage</b>																		
Australia	6.5	5.2	0.9	0.9	7.4	9.5	14.3	12.1	13.0	6.5	11.3	3.9	1.7	-	3.9	3.0	58.9	41.1	100.0
PNG	7.5	2.5	2.5	2.5	20.0	2.5	10.0	10.0	22.5	-	5.0	-	-	-	15.0	-	82.5	17.5	100.0
US	6.3	-	0.0	-	6.3	6.3	-	-	25.0	18.8	31.3	6.3	-	-	-	-	68.8	31.3	100.0
NZ	2.8	-	2.8	-	2.8	5.6	11.1	-	16.7	16.7	11.1	16.7	2.8	-	5.6	5.6	55.6	44.4	100.0
UK	-	9.1	-	-	-	18.2	9.1	18.2	27.3	18.2	-	-	-	-	-	-	36.4	63.6	100.0
Japan	-	-	-	-	17.6	5.9	17.6	17.6	17.6	11.8	5.9	-	-	-	5.9	-	58.8	41.2	100.0
Germany	-	-	-	-	-	-	-	-	-	-	100.0	-	-	-	-	-	100.0	-	100.0
Canada	40.0	-	-	-	-	20.0	20.0	20.0	-	-	-	-	-	-	-	-	60.0	40.0	100.0
Oth.Pacific	9.1	-	4.5	-	18.2	-	22.7	-	18.2	18.2	-	-	-	-	4.5	4.5	77.3	22.7	100.0
Vanuatu	9.1	-	45.5	-	-	-	9.1	9.1	18.2	-	-	-	-	-	9.1	-	90.9	9.1	100.0
Hong Kong	-	-	-	-	-	-	-	-	-	100.0	-	-	-	-	-	-	-	100.0	100.0
Fiji	-	1.5	3.0	-	22.7	7.6	15.2	4.5	16.7	3.0	12.1	4.5	3.0	1.5	3.0	1.5	75.8	24.2	100.0
Oth.Asia	0.4	0.4	7.9	2.2	20.9	3.5	20.9	2.4	18.7	2.4	11.0	0.7	1.8	-	5.1	1.5	86.8	13.2	100.0
Netherlands	-	-	-	-	-	100.0	-	-	-	-	-	-	-	-	-	-	-	100.0	100.0
Oth.Europe	15.4	-	15.4	-	23.1	-	23.1	7.7	-	-	7.7	-	7.7	-	-	-	92.3	7.7	100.0
France	-	-	-	-	50.0	-	50.0	-	-	-	-	-	-	-	-	-	100.0	-	100.0
Italy	-	-	-	-	-	50.0	-	-	-	-	50.0	-	-	-	-	-	50.0	50.0	100.0
Oth.Country	-	-	-	-	14.3	-	-	14.3	35.7	7.1	21.4	-	7.1	-	-	-	78.6	21.4	100.0
<b>Total</b>	<b>3.1</b>	<b>1.8</b>	<b>5.3</b>	<b>1.4</b>	<b>15.9</b>	<b>5.6</b>	<b>17.1</b>	<b>5.9</b>	<b>17.2</b>	<b>5.0</b>	<b>10.8</b>	<b>2.3</b>	<b>1.8</b>	<b>0.1</b>	<b>4.7</b>	<b>2.0</b>	<b>75.8</b>	<b>24.2</b>	<b>100.0</b>



Table 11: Returning Resident Arrivals by Country of Residence by Age Groups by Sex: 3<sup>rd</sup> Quarter 2013

Country of Usual Residence	Age-Group																		Total		
	0-14		15-24		25-34		35-44		45-54		55-64		65+		Not Stated		M	F	All		
	M	F	M	F	M	F	M	F	M	F	M	F	M	F	M	F	M	F	All		
Australia	-	-	-	-	-	-	-	-	-	-	-	-	-	-	-	-	-	-	1	-	-
PNG	-	-	-	-	-	-	-	-	-	-	-	-	-	-	-	-	-	-	-	-	-
US	-	-	-	-	-	-	-	-	-	-	-	-	-	-	-	-	-	-	-	-	-
NZ	-	-	-	-	-	-	-	-	-	-	-	-	-	-	-	-	-	-	-	-	-
UK	-	-	-	-	-	-	-	-	-	-	-	-	-	-	-	-	-	-	-	-	-
Japan	-	1	1	1	2	1	1	-	1	-	-	-	-	-	-	-	-	5	3	8	
Germany	-	-	-	-	-	-	-	-	-	-	-	-	-	-	-	-	-	-	-	-	-
Canada	-	-	-	-	-	-	-	-	-	-	-	-	-	-	-	-	-	-	-	-	-
Oth.Pacific	-	-	-	-	-	-	-	-	-	-	-	-	-	-	-	-	-	-	-	-	-
Vanuatu	-	-	-	-	-	-	-	-	-	-	-	-	-	-	-	-	-	-	-	-	-
Hong Kong	-	-	-	-	-	-	-	-	-	-	-	-	-	-	-	-	-	-	-	-	-
Fiji	-	-	-	-	-	-	-	-	-	-	-	-	-	-	-	-	-	-	-	-	-
Oth.Asia	-	-	-	-	-	-	-	-	-	-	-	-	-	-	-	-	-	-	-	-	-
Netherlands	-	-	-	-	-	-	-	-	-	-	-	-	-	-	-	-	-	-	-	-	-
Oth.Europe	-	-	-	-	-	-	-	-	-	-	-	-	-	-	-	-	-	-	-	-	-
France	-	-	-	-	-	-	-	-	-	-	-	-	-	-	-	-	-	-	-	-	-
Italy	-	-	-	-	-	-	-	-	-	-	-	-	-	-	-	-	-	-	-	-	-
Oth.Country	-	-	-	-	-	-	-	-	-	-	-	-	-	-	-	-	-	-	-	-	-
Solomon Is.	121	94	206	159	576	329	657	395	465	250	238	85	58	13	121	90	2,442	1,415	3,857		
Total	121	95	207	160	578	330	658	395	466	250	238	85	58	13	121	90	2,447	1,418	3,865		
<u>Percentage</u>																					
Australia	-	-	-	-	-	-	-	-	-	-	-	-	-	-	-	-	-	-	-	100.0	
PNG	-	-	-	-	-	-	-	-	-	-	-	-	-	-	-	-	-	-	-	-	-
US	-	-	-	-	-	-	-	-	-	-	-	-	-	-	-	-	-	-	-	-	-
NZ	-	-	-	-	-	-	-	-	-	-	-	-	-	-	-	-	-	-	-	-	-
UK	-	-	-	-	-	-	-	-	-	-	-	-	-	-	-	-	-	-	-	-	-
Japan	-	0.13	0.13	0.13	0.25	0.13	0.13	-	0.13	-	-	-	-	-	-	-	62.5	37.5	100.0		
Germany	-	-	-	-	-	-	-	-	-	-	-	-	-	-	-	-	-	-	-	-	-
Canada	-	-	-	-	-	-	-	-	-	-	-	-	-	-	-	-	-	-	-	-	-
Oth.Pacific	-	-	-	-	-	-	-	-	-	-	-	-	-	-	-	-	-	-	-	-	-
Vanuatu	-	-	-	-	-	-	-	-	-	-	-	-	-	-	-	-	-	-	-	-	-
Hong Kong	-	-	-	-	-	-	-	-	-	-	-	-	-	-	-	-	-	-	-	-	-
Fiji	-	-	-	-	-	-	-	-	-	-	-	-	-	-	-	-	-	-	-	-	-
Oth.Asia	-	-	-	-	-	-	-	-	-	-	-	-	-	-	-	-	-	-	-	-	-
Netherlands	-	-	-	-	-	-	-	-	-	-	-	-	-	-	-	-	-	-	-	-	-
Oth.Europe	-	-	-	-	-	-	-	-	-	-	-	-	-	-	-	-	-	-	-	-	-
France	-	-	-	-	-	-	-	-	-	-	-	-	-	-	-	-	-	-	-	-	-
Italy	-	-	-	-	-	-	-	-	-	-	-	-	-	-	-	-	-	-	-	-	-
Oth.Country	-	-	-	-	-	-	-	-	-	-	-	-	-	-	-	-	-	-	-	-	-
Solomon Is.	3.1	2.4	5.3	4.1	14.9	8.5	17.0	10.2	12.1	6.5	6.2	2.2	1.5	0.3	3.1	2.3	63.3	36.7	100.0		
Total	3.1	2.5	5.4	4.1	15.0	8.5	17.0	10.2	12.1	6.5	6.2	2.2	1.5	0.3	3.1	2.3	63.3	36.7	100.0		

Table 12: Returning Resident Arrivals by Country of Residence by Occupation and Sex: 3<sup>rd</sup> Quarter 2013

Country of Usual Residence	Professional and Technical		Administration and Managerial		Clerical & Related Work		Sales Worker		Service Worker		Agriculture Forestry Fishery		Production & Related Work		Other		No Work		Total		
	M	F	M	F	M	F	M	F	M	F	M	F	M	F	M	F	M	F	M	F	All
Australia	-	-	-	-	-	-	-	-	-	-	-	-	-	-	-	-	-	-	-	-	-
PNG	-	-	-	-	-	-	-	-	-	-	-	-	-	-	-	-	-	-	-	-	-
US	-	-	-	-	-	-	-	-	-	-	-	-	-	-	-	-	-	-	-	-	-
NZ	-	-	-	-	-	-	-	-	-	-	-	-	-	-	-	-	-	-	-	-	-
UK	-	-	-	-	-	-	-	-	-	-	-	-	-	-	-	-	-	-	-	-	-
Japan	2	1	-	-	-	-	-	-	1	-	-	-	-	-	2	2	-	-	5	3	8
Germany	-	-	-	-	-	-	-	-	-	-	-	-	-	-	-	-	-	-	-	-	-
Canada	-	-	-	-	-	-	-	-	-	-	-	-	-	-	-	-	-	-	-	-	-
Oth.Pacific	-	-	-	-	-	-	-	-	-	-	-	-	-	-	-	-	-	-	-	-	-
Vanuatu	-	-	-	-	-	-	-	-	-	-	-	-	-	-	-	-	-	-	-	-	-
Hong Kong	-	-	-	-	-	-	-	-	-	-	-	-	-	-	-	-	-	-	-	-	-
Fiji	-	-	-	-	-	-	-	-	-	-	-	-	-	-	-	-	-	-	-	-	-
Oth.Asia	-	-	-	-	-	-	-	-	-	-	-	-	-	-	-	-	-	-	-	-	-
Netherlands	-	-	-	-	-	-	-	-	-	-	-	-	-	-	-	-	-	-	-	-	-
Oth.Europe	-	-	-	-	-	-	-	-	-	-	-	-	-	-	-	-	-	-	-	-	-
France	-	-	-	-	-	-	-	-	-	-	-	-	-	-	-	-	-	-	-	-	-
Italy	-	-	-	-	-	-	-	-	-	-	-	-	-	-	-	-	-	-	-	-	-
Oth.Country	-	-	-	-	-	-	-	-	-	-	-	-	-	-	-	-	-	-	-	-	-
Solomon Is.	868	470	227	97	22	23	39	4	77	221	27	21	87	2	946	461	149	116	2442	1415	3857
Total	870	471	227	97	22	23	39	4	78	221	27	21	87	2	948	463	149	116	2447	1418	3865
	Percentage																				
Australia	-	-	-	-	-	-	-	-	-	-	-	-	-	-	-	-	-	-	-	-	-
PNG	-	-	-	-	-	-	-	-	-	-	-	-	-	-	-	-	-	-	-	-	-
US	-	-	-	-	-	-	-	-	-	-	-	-	-	-	-	-	-	-	-	-	-
NZ	-	-	-	-	-	-	-	-	-	-	-	-	-	-	-	-	-	-	-	-	-
UK	-	-	-	-	-	-	-	-	-	-	-	-	-	-	-	-	-	-	-	-	-
Japan	25.0	12.5	-	-	-	-	-	-	12.5	-	-	-	-	-	25.0	25.0	-	-	62.5	37.5	100.0
Germany	-	-	-	-	-	-	-	-	-	-	-	-	-	-	-	-	-	-	-	-	-
Canada	-	-	-	-	-	-	-	-	-	-	-	-	-	-	-	-	-	-	-	-	-
Oth.Pacific	-	-	-	-	-	-	-	-	-	-	-	-	-	-	-	-	-	-	-	-	-
Vanuatu	-	-	-	-	-	-	-	-	-	-	-	-	-	-	-	-	-	-	-	-	-
Hong Kong	-	-	-	-	-	-	-	-	-	-	-	-	-	-	-	-	-	-	-	-	-
Fiji	-	-	-	-	-	-	-	-	-	-	-	-	-	-	-	-	-	-	-	-	-
Oth.Asia	-	-	-	-	-	-	-	-	-	-	-	-	-	-	-	-	-	-	-	-	-
Netherlands	-	-	-	-	-	-	-	-	-	-	-	-	-	-	-	-	-	-	-	-	-
Oth.Europe	-	-	-	-	-	-	-	-	-	-	-	-	-	-	-	-	-	-	-	-	-
France	-	-	-	-	-	-	-	-	-	-	-	-	-	-	-	-	-	-	-	-	-
Italy	-	-	-	-	-	-	-	-	-	-	-	-	-	-	-	-	-	-	-	-	-
Oth.Country	-	-	-	-	-	-	-	-	-	-	-	-	-	-	-	-	-	-	-	-	-
Solomon Is.	22.5	12.2	5.9	2.5	0.6	0.6	1.0	0.1	2.0	5.7	0.7	0.5	2.3	0.1	24.5	12.0	3.9	3.0	63.3	36.7	100.0
Total	22.5	12.2	5.9	2.5	0.6	0.6	1.0	0.1	2.0	5.7	0.7	0.5	2.3	0.1	24.5	12.0	3.9	3.0	63.3	36.7	100.0