



**Solomon Islands Government**

**Statistical Bulletin: No: 16/2016**

**VISITOR STATISTICS**

(Third Quarter 2014)

**Solomon Islands National Statistics Office**

**Ministry of Finance**

**Honiara**

## TABLE OF CONTENTS

Introduction .....	3
COMMENTARY OF RESULTS .....	5
<i>International Arrivals</i> .....	5
<i>Arrivals by Country of Residence</i> .....	5
<i>Visitor by Month</i> .....	5
<i>Tourists</i> .....	5
<i>Visitors by Purpose of Visit</i> .....	5
<i>Visitor by Age Group</i> .....	5
<i>Visitor by Occupation:</i> .....	5
<i>Visitor by Carrier</i> .....	5
<b>Charts</b>	
<hr/>	
Chart 1: Arrivals by Category, 3rd Quarter 2014 .....	6
Chart 2: Visitor Arrivals by Country of Residence by quarter: 3rd Quarter 2014.....	7
Chart 3: Visitor Arrivals by Month, 2011 to 3rd Quarter 2014 .....	8
Chart 4: Tourist Arrivals by Country of Residence, 3rd Quarter 2014.....	9
Chart 5: Visitor Arrivals by Country of Residence by Purpose of Visit, 3rd Quarter 2014.....	10
Chart 6: Visitor Arrivals by Age group category by sex, 3rd Quarter 2014.....	11
Chart 7: Visitor Arrivals by Occupation by sex, 3rd Quarter 2014.....	12
Chart 8: Visitor Arrivals by Carrier by sex, 3rd Quarter 2014.....	13
<b>Tables</b>	
Table 1: Total Arrivals Classified by Purpose of Travel by Sex by Year by Quarter: 3rd Quarter 2014.....	6
Table 2: Visitors Arrivals by Country of Residence by Year by Quarter: 3rd Quarter 2014 .....	7
Table 3: Visitors Arrivals by Month: 2006 to 3rd Quarter 2014 .....	8
Table 4: Visitors Classified as Tourists by Country of Residence by Year, Quarter and Average Length of Stay: 2012 to 3rd Quarter 2014 .....	9
Table 5: Visitor Arrivals by Country of Residence by Purpose of Visit by sex: 3rd Quarter 2014 .....	10
Table 6: Visitors Arrivals by Country of Residence by Age Groups by sex: 3rd Quarter 2014 .....	11
Table 7: Visitors Arrivals by Country of Residence by Occupation and Sex: 3rd Quarter 2014.....	12
Table 8: Visitors Arrivals by Country of Residence by Carrier By Sex: 3rd Quarter 2014.....	13
Appendix 1 .....	14
<i>Concepts and Definitions</i> .....	14
Appendix 2.....	15
Table 9: Intending Resident Arrivals by Country of residence by Occupation and sex: 3 <sup>rd</sup> Quarter 2014 .....	15
Table 10: Intending Resident Arrivals by country of Residence by Age Groups by Sex: 3 <sup>rd</sup> Quarter 2014 .....	16
Table 11: Returning Resident Arrivals by country of Residence by Age Groups and sex: 3 <sup>rd</sup> Quarter 2014 ....	17
Table 12: Returning Resident Arrivals by country of Residence by Occupation and sex: 3 <sup>rd</sup> Quarter 2014 ....	18

## Introduction

This quarterly bulletin is produced by the National Statistics Office NSO in the Ministry of Finance and Treasury. It provides information on international arrivals comprised of the returning resident, intending resident, and visitor. The explanation of these categories is provided in Appendix 1 of the bulletin.

Visitor category comprised the bigger share of the bulletin, (portrayed in tables 1 to 8); compared to the returning and intending resident category portrayed in Tables 1, and 9 to 12. The bulletin includes twelve tables and eight charts stretched over cross-field tabulation, preferably to meet information need of local, regional, and international researchers.

The information captured through a self fill Disembarkation form that was completed by all disembarking passengers. The forms were collected by Immigration officials at international check-in counters on arrival. The coverage of the bulletin is complete.

Sheer acknowledgement is owed to the Immigration Department for their continuous support of this bulletin, by providing an office space and permitting the statistics office to input completed forms. With the official arrangement in-placed between the Statistics and Immigration departments this bulletin is possible.

The inclusion of four new tables 9 to 12 in Appendix 2 of the bulletin anticipates to complete the distribution portrait of Intending and Returning resident. The distribution is by age groups, occupation and by country of usual residence.

Data limitations, highlighted in the previous bulletin still remain, though some have substantially improved but noted again for ease of reference as follows:-

- Data entry duplication by the Immigration and Statistics departments was a long standing issue. Discussion of the issues had been made by the two departments, though resolution has been recognized, this was yet to be put in place.
- Timeliness of visitor statistics has improved but the bulletin may be delayed by the production process.
- The information contained in the bulletin is based on information captured from the data source by the SINSO.
- The monetary value of the industry is not available and thus not possible in this bulletin. The concepts and definitions of the arrival categories were included in Appendix 1. The symbols that are likely to be used are:

-	zero if representing a value
-	negative change if representing a percentage change
+	positive change if representing a percentage change
p	preliminary figure, subject to revision
r	revised
e	estimate
n/a	not available

For more information contact the Statistics Office, Department of Finance and Treasury:

TELEPHONE : (677) 22154/21427

FACSMILE : (677) 23775

E-MAIL : STATS-management@mof.gov.sb

: STATS-SocialDemography@mof.gov.sb

WEBSITE : <http://www.spc.int/prism/country/sb/stats>

Contact persons:      1. Mrs. Irene **KALAUMA**, Chief Statistician  
                                 2. Mrs. Anterlyn **TUZAKANA**, Senior Statistician

## COMMENTARY OF RESULTS

### International Arrivals

Total Arrivals for the third quarter of 2014 was 10,253. This figure showed an increase of 6.2% compared to the previous quarter (2<sup>nd</sup> Quarter 2014). Compared to the same quarter a year ago, it showed a decrease of 12.3%.

Arrivals classified by the category for the third quarter of 2014 showed that returning resident comprise of 36%. Visitors recorded 54% and the remaining 10% was recorded for intending resident.

Visitor arrivals for the third quarter showed an increase of 11.3% to 5,483 compared to the second quarter 2014 figure of 4,925. Compared to the same quarter in 2013, a decrease of 20.4% was recorded. Table 1, showed visitor and returning resident categories comprised the larger proportion of all arrivals while the intending resident represents the lesser share during the quarter. Chart 1 gives a clear picture of all the categories.

The country of China is now added to the list of country of residence. In previous reports 'China' was merged with countries of 'Other Asia'.

### Visitor by Country of Residence

Arrivals by country of residence for third quarter continue to show that Australians (46.0%) remains the frequent travellers to Solomon Islands as in the previous quarters, followed by Other Asia (12.0%), NZ (7.4%), US (5.9%), PNG and Fiji (5.0%), and Other Pacific (3.4%). Table 2 showed further detailed information.

### Visitor by Month

Visitors by monthly arrivals for the quarter showed that July has the highest number of arrivals with 2,114 persons. This was followed by the month of September with a recorded total of 1,730 persons and August the least with 1,639 persons.

### Tourists

Tourist<sup>1</sup> arrivals for third quarter of the year recorded a total of 1,776 persons and they spent an average of 16 days in the country. The highest number of tourists recorded for the quarter comes from Australia (50.0%) and staying in the country for an average of 15 days. This was followed by Other Asia (11.0%), US (9.5%), Other Europe (4.5%), Japan (3.9%), and NZ (3.5%).

### Visitor by Purpose of Visit

Distribution of visitors by purpose of visit revealed that Business & Conference (38.1%) as most popular during the quarter. This was followed by Holiday & Vocation (31.3%), Other (18.7%), Visit friends & relatives (10.8%) and Transit & stopover the least with 1.1%.

### Visitor by Age Group

Visitor Arrivals by broad age groups showed that 75.6% of arrivals were in the 25years to 64years age range. The younger and the older age brackets represent 20.6% while the remaining 3.9% represents visitors who did not state their age. Male represent 69.2% of the arrival and female 30.8%. (Refer to Chart 6)

### Visitor by Occupation

Visitor by occupational category revealed that those who stated Other (36.6%) recorded the highest during the quarter. This was followed by Professional & Technical (34.1%), Administration and managerial (10.3%), No work (8.4%), Service Worker and Production & Related Work (3.9%). Table 7 further revealed that Australia not only dominated the Arrivals in terms of markets but also dominated most of the categories of occupations during the quarter. Refer to Table 7 for further analysis.

### Visitor by Carrier

The most popular carriers during the quarter were Solomon Airlines (51.8%) followed by Virgin Australia (31.1%), Air Niu Gini (14.7%) and Fiji Airways (2.3%).

---

<sup>1</sup> Refer to Appendix 1 for the definition

Table 1: Total Arrivals Classified by Purpose of Travel by Sex, by Year by Quarter: 3<sup>rd</sup> Quarter 2014

Year / Quarter	Returning Resident						Intending Resident				Visitor			Total		
	Solomon Islander			Non-Solomon Islander			All	M	F	T	M	F	T	M	F	All
	M	F	T	M	F	T										
2011 1 <sup>st</sup>	1,187	724	1,911	694	332	1,026	2,937	1058	362	1,420	3,972	1,147	5,119	6,911	2,565	9,476
2 <sup>nd</sup>	1,601	880	2,481	615	292	907	3,388	716	258	974	4,071	1,434	5,505	7,003	2,864	9,867
3 <sup>rd</sup>	1,716	739	2,455	642	282	924	3,379	930	275	1,205	4,523	1,721	6,244	7,811	3,017	10,828
4 <sup>th</sup>	3,297	1,765	5,062	4	2	6	5,068	805	268	1,073	4,341	1,732	6,073	8,447	3,767	12,214
2012 1 <sup>st</sup>	1,915	994	2,909	15	3	18	2,927	1,029	387	1,416	3,554	1,097	4,651	6,513	2,481	8,994
2 <sup>nd</sup>	1,782	967	2,749	667	312	979	3,728	695	278	973	4,921	2,008	6,929	8,065	3,565	11,630
3 <sup>rd</sup>	2,169	1,218	3,387	22	12	34	3,421	840	255	1,095	5,123	2,184	7,307	8,154	3,669	11,823
4 <sup>th</sup>	3,192	1,784	4,976	5	1	6	4,982	631	215	846	3,572	1,466	5,038	7,400	3,466	10,866
2013 1 <sup>st</sup>	1,966	1,111	3,077	6	-	6	3,083	961	338	1,299	4,034	1,284	5,318	6,967	2,733	9,700
2 <sup>nd</sup>	2,422	1,344	3,766	1	2	3	3,769	764	279	1,043	4,531	1,664	6,195	7,718	3,289	11,007
3 <sup>rd</sup>	2,442	1,415	3,857	5	3	8	3,865	715	228	943	5,007	1,880	6,887	8,169	3,526	11,695
4 <sup>th</sup>	3,577	2,051	5,628	12	12	24	5,652	620	224	844	4,294	1,737	6,031	8,503	4,024	12,527
2014 1 <sup>st</sup>	2,100	1,287	3,387	3	3	6	3,393	841	318	1,159	3,685	1,069	4,754	6,629	2,677	9,306
2 <sup>nd</sup>	2,511	1,231	3,742	126	56	182	3,924	604	204	808	3,506	1,419	4,925	6,747	2,910	9,657
3 <sup>rd</sup>	2,399	1,295	3,694	5	4	9	3,703	823	244	1,067	3,792	1,691	5,483	7,019	3,234	10,253

	Percentage change															
11 <sup>3rd</sup> -12 <sup>3rd</sup>	26.4	64.8	38.0	-96.6	-95.7	-96.3	1.2	-9.7	-7.3	-9.1	13.3	26.9	17.0	4.4	21.6	9.2
12 <sup>2nd</sup> -12 <sup>3rd</sup>	21.7	26.0	23.2	-96.7	-96.2	-96.5	-8.2	20.9	-8.3	12.5	4.1	8.8	5.5	1.1	2.9	1.7
11 <sup>4th</sup> -12 <sup>4th</sup>	-3.2	1.1	-1.7	25.0	-50.0	-	-1.7	-21.6	-19.8	-21.2	-17.7	-15.4	-17.0	-12.4	-8.0	-11.0
12 <sup>3rd</sup> -12 <sup>4th</sup>	47.2	46.5	46.9	-77.3	-91.7	-82.4	45.6	-24.9	-15.7	-22.7	-30.3	-32.9	-31.1	-9.2	-5.5	-8.1
12 <sup>1st</sup> -13 <sup>1st</sup>	2.7	11.8	5.8	-60.0	-100.0	-66.7	5.3	-6.6	-12.7	-8.3	13.5	17.0	14.3	7.0	10.2	7.8
12 <sup>4th</sup> -13 <sup>1st</sup>	-38.4	-37.7	-38.2	20.0	-100.0	-	-38.1	52.3	57.2	53.5	12.9	-12.4	5.6	-5.9	-21.1	-10.7
12 <sup>2nd</sup> -13 <sup>2nd</sup>	35.9	39.0	37.0	-99.9	-99.4	-99.7	1.1	9.9	0.4	7.2	-7.9	-17.1	-10.6	-4.3	-7.7	-5.4
13 <sup>1st</sup> -13 <sup>2nd</sup>	23.2	21.0	22.4	-83.3	-	-50.0	22.3	-20.5	-17.5	-19.7	12.3	29.6	16.5	10.8	20.3	13.5
12 <sup>3rd</sup> -13 <sup>3rd</sup>	12.6	16.2	13.9	-77.3	-75.0	-76.5	13.0	-14.9	-10.6	-13.9	-2.3	-13.9	-5.7	0.2	-3.9	-1.1
13 <sup>2nd</sup> -13 <sup>3rd</sup>	0.8	5.3	2.4	400.0	50.0	166.7	2.5	-6.4	-18.3	-9.6	10.5	13.0	11.2	5.8	7.2	6.3
12 <sup>4th</sup> -13 <sup>4th</sup>	12.1	15.0	13.1	140.0	1100.0	300.0	13.4	-1.7	4.2	-0.2	20.2	18.5	19.7	14.9	16.1	15.3
13 <sup>3rd</sup> -13 <sup>4th</sup>	46.5	44.9	45.9	140.0	300.0	200.0	46.2	-13.3	-1.8	-10.5	-14.2	-7.6	-12.4	4.1	14.1	7.1
13 <sup>1st</sup> -14 <sup>1st</sup>	6.8	15.8	10.1	-50.0	-	0.0	10.1	-12.5	-5.9	-10.8	-8.7	-16.7	-10.6	-4.9	-2.0	-4.1
13 <sup>4th</sup> -14 <sup>1st</sup>	-41.3	-37.3	-39.8	-75.0	-75.0	-75.0	-40.0	35.6	42.0	37.3	-14.2	-38.5	-21.2	-22.0	-33.5	-25.7
13 <sup>2nd</sup> -14 <sup>2nd</sup>	3.7	-8.4	-0.6	12500.0	2700.0	5966.7	4.1	-20.9	-26.9	-22.5	-22.6	-14.7	-20.5	-12.6	-11.5	-12.3
14 <sup>1st</sup> -14 <sup>2nd</sup>	19.6	-4.4	10.5	4100.0	1766.7	2933.3	15.6	-28.2	-35.8	-30.3	-4.9	32.7	3.6	1.8	8.7	3.8
13 <sup>3rd</sup> -14 <sup>3rd</sup>	-1.8	-8.5	-4.2	0.0	33.3	12.5	-4.2	15.1	7.0	13.1	-24.3	-10.1	-20.4	-14.1	-8.3	-12.3
14 <sup>2nd</sup> -14 <sup>3rd</sup>	-4.5	5.2	-1.3	-96.0	-92.9	-95.1	-5.6	36.3	19.6	32.1	8.2	19.2	11.3	4.0	11.1	6.2

Chart 1: Arrivals by category 3<sup>rd</sup> quarter 2014

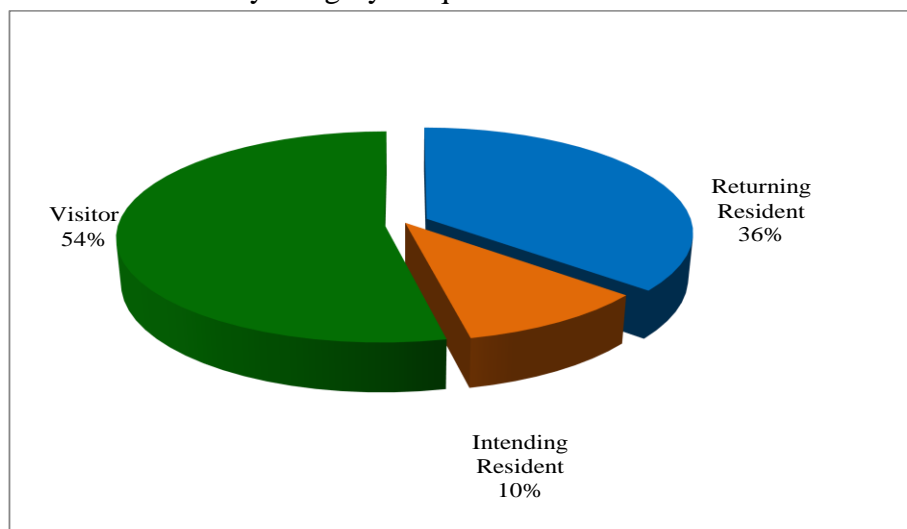


Table 2: Visitor Arrivals by Country of Residence by year by quarter: 3<sup>rd</sup> Quarter 2014

Country of Usual Residence	2011					2012					2013					2014			
	Q1	Q2	Q3	Q4	Total	Q1	Q2	Q3	Q4	Total	Q1	Q2	Q3	Q4	Total	Q1	Q2	Q3	
Australia	2,569	2,763	3,042	3,018	11,392	2,238	2,963	3,404	2,474	11,079	2,282	3,049	3,001	2,849	11,181	2088	2,225	2,521	
PNG	443	479	589	546	2,057	431	602	476	464	1,973	458	417	621	523	2,019	383	260	275	
US	188	243	368	241	1,040	183	356	561	234	1,334	231	325	357	248	1,161	231	362	324	
NZ	385	433	479	427	1,724	285	545	560	357	1,747	381	531	607	386	1,905	277	343	404	
UK	78	110	101	91	380	81	84	151	69	385	104	110	152	94	460	65	99	77	
Japan	145	106	229	161	641	162	112	211	129	614	128	116	179	178	601	137	84	172	
Germany	22	26	38	25	111	22	40	29	26	117	33	19	35	49	136	15	30	35	
Canada	51	30	55	56	192	29	25	30	27	111	28	35	40	45	148	38	43	42	
Oth.Pacific	185	185	170	223	763	101	811	371	135	1,418	188	142	202	228	760	139	81	184	
Vanuatu	125	103	100	185	513	121	148	179	147	595	250	185	191	178	804	117	171	100	
Hong Kong	12	12	22	84	130	14	20	21	25	80	16	18	33	14	81	35	11	28	
Fiji	262	327	285	330	1,204	300	510	444	301	1,555	451	424	528	397	1,800	351	361	273	
Other Asia	487	523	562	484	2,056	500	544	577	484	2,105	623	655	743	604	2,625	689	580	658	
Netherlands	18	13	20	13	64	12	11	23	11	57	10	6	24	23	63	7	18	13	
Oth.Europe	60	62	63	61	246	76	74	121	50	321	53	57	70	107	287	119	76	130	
France	10	20	22	8	60	24	19	36	9	88	21	21	26	25	93	21	19	33	
Italy	13	17	20	30	80	13	12	40	28	93	16	18	16	33	83	14	10	21	
China	-	-	-	-	-	-	-	-	-	-	-	-	-	-	-	-	103	167	
Oth.Country	66	53	79	90	288	59	53	73	68	253	45	67	62	50	224	28	49	26	
<b>Total</b>	<b>5,119</b>	<b>5,505</b>	<b>6,244</b>	<b>6,073</b>	<b>22,941</b>	<b>4,651</b>	<b>6,929</b>	<b>7,307</b>	<b>5038</b>	<b>23,925</b>	<b>5,318</b>	<b>6,195</b>	<b>6,887</b>	<b>6,031</b>	<b>24,431</b>	<b>4,754</b>	<b>4,925</b>	<b>5,483</b>	
Percentage																			
Australia	50.2	50.2	48.7	49.7	49.7	48.1	42.8	46.6	49.1	46.3	42.9	49.2	43.6	47.2	45.8	43.9	45.2	46.0	
PNG	8.7	8.7	9.4	9.0	9.0	9.3	8.7	6.5	9.2	8.2	8.6	6.7	9.0	8.7	8.3	8.1	5.3	5.0	
US	3.7	4.4	5.9	4.0	4.5	3.9	5.1	7.7	4.6	5.6	4.3	5.2	5.2	4.1	4.8	4.9	7.4	5.9	
NZ	7.5	7.9	7.7	7.0	7.5	6.1	7.9	7.7	7.1	7.3	7.2	8.6	8.8	6.4	7.8	5.8	7.0	7.4	
UK	1.5	2.0	1.6	1.5	1.7	1.7	1.2	2.1	1.4	1.6	2.0	1.8	2.2	1.6	1.9	1.4	2.0	1.4	
Japan	2.8	1.9	3.7	2.7	2.8	3.5	1.6	2.9	2.6	2.6	2.4	1.9	2.6	3.0	2.5	2.9	1.7	3.1	
Germany	0.4	0.5	0.6	0.4	0.5	0.5	0.6	0.4	0.5	0.5	0.6	0.3	0.5	0.8	0.6	0.3	0.6	0.6	
Canada	1.0	0.5	0.9	0.9	0.8	0.6	0.4	0.4	0.5	0.5	0.5	0.6	0.6	0.7	0.6	0.8	0.9	0.8	
Oth.Pacific	3.6	3.4	2.7	3.7	3.3	2.2	11.7	5.1	2.7	5.9	3.5	2.3	2.9	3.8	3.1	2.9	1.6	3.4	
Vanuatu	2.4	1.9	1.6	3.0	2.2	2.6	2.1	2.4	2.9	2.5	4.7	3.0	2.8	3.0	3.3	2.5	3.5	1.8	
Hong Kong	0.2	0.2	0.4	1.4	0.6	0.3	0.3	0.3	0.5	0.3	0.3	0.3	0.5	0.2	0.3	0.7	0.2	0.5	
Fiji	5.1	5.9	4.6	5.4	5.2	6.5	7.4	6.1	6.0	6.5	8.5	6.8	7.7	6.6	7.4	7.4	7.3	5.0	
Oth.Asia	9.5	9.5	9.0	8.0	9.0	10.8	7.9	7.9	9.6	8.8	11.7	10.6	10.8	10.0	10.7	14.5	11.8	12.0	
Netherlands	0.4	0.2	0.3	0.2	0.3	0.3	0.2	0.3	0.2	0.2	0.2	0.1	0.3	0.4	0.3	0.1	0.4	0.2	
Oth.Europe	1.2	1.1	1.0	1.0	1.1	1.6	1.1	1.7	1.0	1.3	1.0	0.9	1.0	1.8	1.2	2.5	1.5	2.4	
France	0.2	0.4	0.4	0.1	0.3	0.5	0.3	0.5	0.2	0.4	0.4	0.3	0.4	0.4	0.4	0.4	0.4	0.6	
Italy	0.3	0.3	0.3	0.5	0.3	0.3	0.2	0.5	0.6	0.4	0.3	0.3	0.2	0.5	0.3	0.3	0.2	0.4	
China*	-	-	-	-	-	-	-	-	-	-	-	-	-	-	-	-	2.1	3.0	
Oth.Country	1.3	1.0	1.3	1.5	1.3	1.3	0.8	1.0	1.3	1.1	0.8	1.1	0.9	0.8	0.9	0.6	1.0	0.5	
<b>Total</b>	<b>100.0</b>	<b>100.0</b>	<b>100.0</b>	<b>100.0</b>	<b>100.0</b>	<b>100.0</b>	<b>100.0</b>	<b>100.0</b>	<b>100.0</b>	<b>100.0</b>	<b>100.0</b>	<b>100.0</b>	<b>100.0</b>	<b>100.0</b>	<b>100.0</b>	<b>100.0</b>	<b>100.0</b>	<b>100.0</b>	

\*Figures for 'China' for previous quarters was included in 'Other Asia'

Chart 2: Visitors Arrival by Country of residence by quarter, 3<sup>rd</sup> quarter 2014

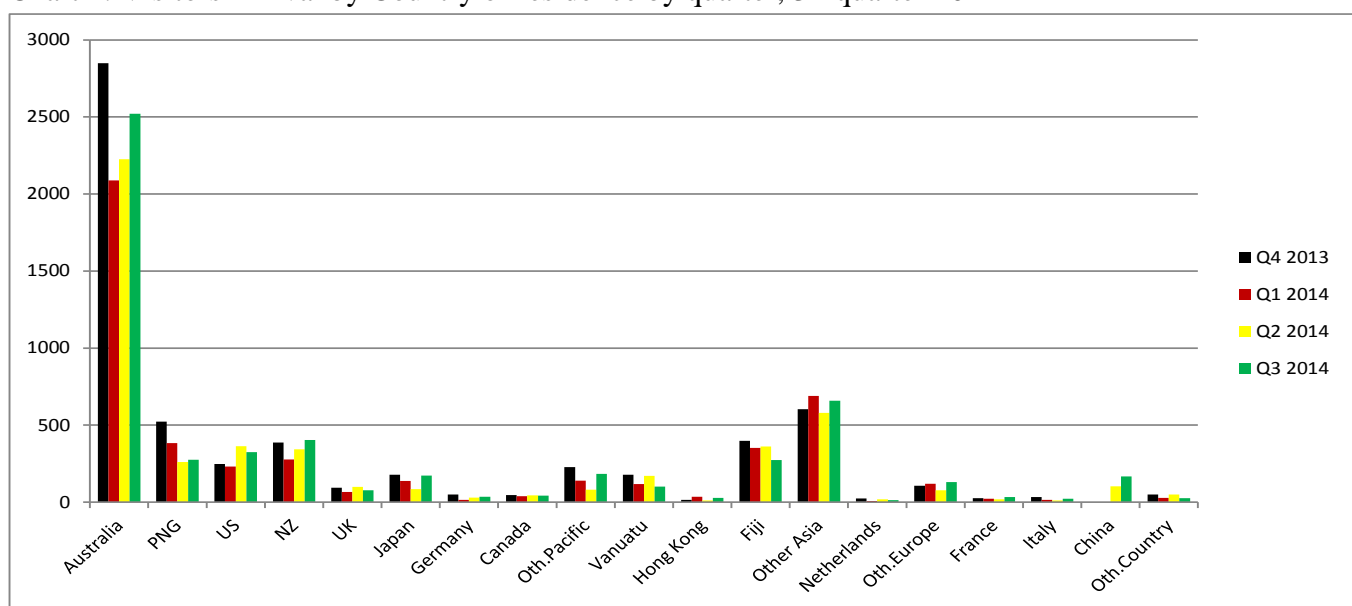


Table 3: Visitor Arrivals by Month: 2006 – 3<sup>rd</sup> Quarter 2014

Month	2006	2007	2008	2009	2010	2011	2012	2013	2014
January	952	546	889	1,602	1,235	1,600	1,383	1,590	1,415
February	838	1,020	1,282	1,422	1,209	1,658	1,591	1,544	1,523
March	972	1,251	802	1,249	1,766	1,861	1,677	2,184	1,816
April	994	1,452	1,388	1,499	1,820	1,736	1,839	2,021	1,514
May	858	1,137	1,261	1,393	1,137	1,760	1,968	1,857	1,462
June	1,289	1,265	1,552	1,724	1,797	2,009	3,122	2,317	1,949
July	865	822	1,692	1,603	2,264	2,185	2,865	2,574	2,114
August	892	1,299	1,469	1,520	1,845	1,900	2,133	2,022	1,639
September	681	1,299	1,457	1,659	2,153	2,159	2,309	2,291	1,730
October	942	1,260	1,399	1,709	1,813	1,931	1,929	2057	
November	1,118	1,246	1,545	1,475	1,624	2,195	1,545	1981	
December	1,081	1,151	1,528	1,405	1,858	1,947	1,564	1993	
<b>Total</b>	<b>11,482</b>	<b>13,748</b>	<b>16,264</b>	<b>18,260</b>	<b>20,521</b>	<b>22,941</b>	<b>23,925</b>	<b>24,431</b>	<b>15,162</b>
Percentage									
January	8.3	4.0	5.5	8.8	5.5	7.0	5.8	6.5	9.3
February	7.3	7.4	7.9	7.8	5.4	7.2	6.6	6.3	10.0
March	8.5	9.1	4.9	6.8	7.8	8.1	7.0	8.9	12.0
April	8.7	10.6	8.5	8.2	8.1	7.6	7.7	8.3	10.0
May	7.5	8.3	7.8	7.6	5.0	7.7	8.2	7.6	9.6
June	11.2	9.2	9.5	9.4	8.0	8.8	13.0	9.5	12.9
July	7.5	6.0	10.4	8.8	10.0	9.5	12.0	10.5	13.9
August	7.8	9.4	9.0	8.3	8.2	8.3	8.9	8.3	10.8
September	5.9	9.4	9.0	9.1	9.6	9.4	9.7	9.4	11.4
October	8.2	9.2	8.6	9.4	8.0	8.4	8.1	8.4	
November	9.7	9.1	9.5	8.1	7.2	9.6	6.5	8.1	
December	9.4	8.4	9.4	7.7	8.2	8.5	6.5	8.2	
<b>Total</b>	<b>100</b>	<b>100.0</b>	<b>100.0</b>	<b>100.0</b>	<b>100.0</b>	<b>100.0</b>	<b>100.0</b>	<b>100.0</b>	<b>100.0</b>

Chart 3: Visitors Arrival by month, 2011 – 3<sup>rd</sup> quarter 2014

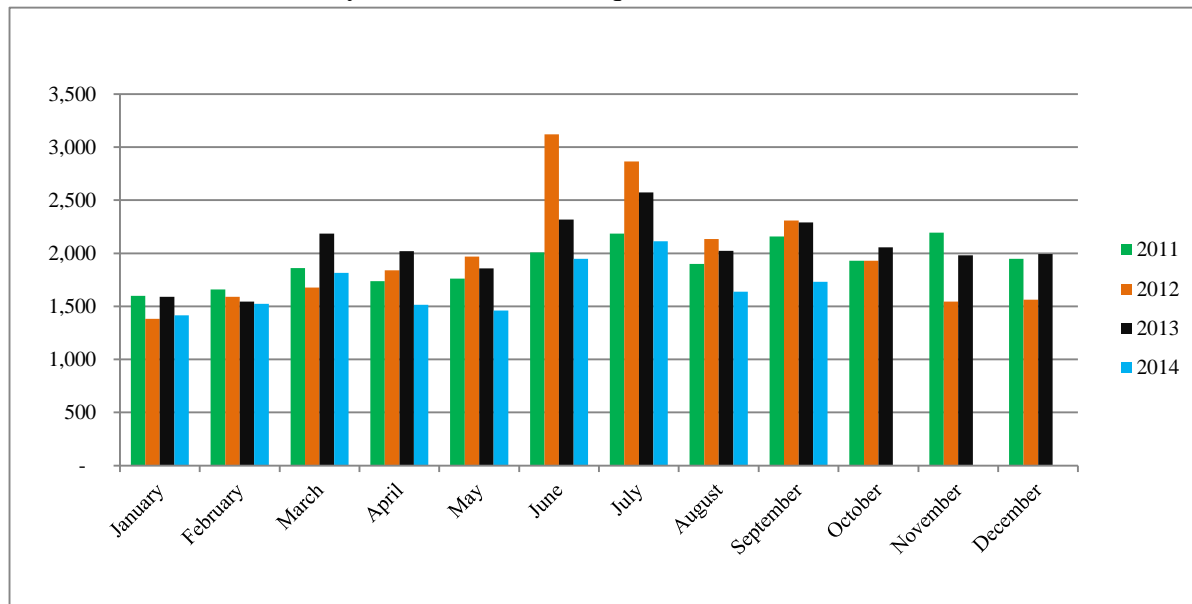




Table 4: Visitors, classified as tourists by Country of residence by year, quarter and average length of stay: 2012 – 3<sup>rd</sup> Quarter 2014

Country of Usual Residence	2012								2013								2014					
	Quarter 1		Quarter 2		Quarter 3		Quarter 4		Quarter 1		Quarter 2		Quarter 3		Quarter 4		Quarter 1		Quarter 2		Quarter 3	
	tourist	day	tourist	day	tourist	day	tourist	day	tourist	day	tourist	day	tourist	day	tourist	day	tourist	day	tourist	day	tourist	day
Australia	511	12	891	13	1,193	12	808	14	507	13	981	11	943	12	914	13	484	13	745	13	890	15
PNG	23	14	54	13	58	15	66	20	43	10	39	12	43	10	105	29	42	14	50	8	42	12
US	65	10	182	12	251	10	116	11	75	11	136	12	182	13	128	14	82	13	208	10	169	13
NZ	24	11	69	13	115	12	57	16	30	15	95	15	62	18	69	22	13	13	35	10	63	17
UK	25	18	28	32	36	20	40	18	31	25	39	21	76	23	31	18	25	24	28	26	34	23
Japan	53	7	41	7	92	9	52	7	38	13	33	19	59	10	75	8	37	7	10	11	69	14
Germany	14	18	21	20	15	12	12	17	25	13	9	11	21	11	33	22	9	16	12	11	26	17
Canada	8	15	10	22	12	15	13	11	14	20	12	10	14	16	20	11	8	11	24	9	20	14
Oth.Pacific	11	14	38	14	68	13	7	17	18	10	16	15	21	15	30	10	8	9	10	8	19	14
Vanuatu	21	7	15	10	19	10	25	19	50	6	17	8	12	13	34	17	17	2	32	6	23	17
Hong Kong	3	18	6	16	8	9	10	20	6	11	8	21	8	14	3	27	10	10	1	7	9	13
Fiji	22	19	29	26	42	20	22	32	29	22	12	18	14	9	37	14	21	14	28	11	20	14
Oth.Asia	107	22	101	22	126	29	104	24	108	21	119	25	164	15	151	20	150	21	162	22	196	21
Netherlands	5	21	7	27	10	14	7	15	1	7	2	13	6	23	13	14	3	13	9	13	9	23
Oth.Europe	43	14	43	14	86	13	17	20	25	13	33	14	30	13	58	15	66	12	32	17	80	17
France	14	16	2	25	19	13	1	14	9	16	8	8	13	17	15	33	7	11	9	12	24	18
Italy	4	21	1	30	28	13	13	54	4	32	7	25	7	11	15	46	5	10	5	11	16	13
China	-	-	-	-	-	-	-	-	-	-	-	-	-	-	-	-	-	-	28	35	57	25
Oth.Country	14	9	9	18	30	12	20	12	9	14	22	7	17	12	23	21	1	20	16	13	10	13
Total	967	13	1,547	14	2,208	13	1,390	16	1,022	14	1,588	13	1,692	13	1,754	16	988	14	1,444	14	1,776	16

\*Figures for 'China' for previous quarters was included in 'Other Asia'

Chart 4: Tourist Arrivals by Country of Residence, 3<sup>rd</sup> Quarter 2014

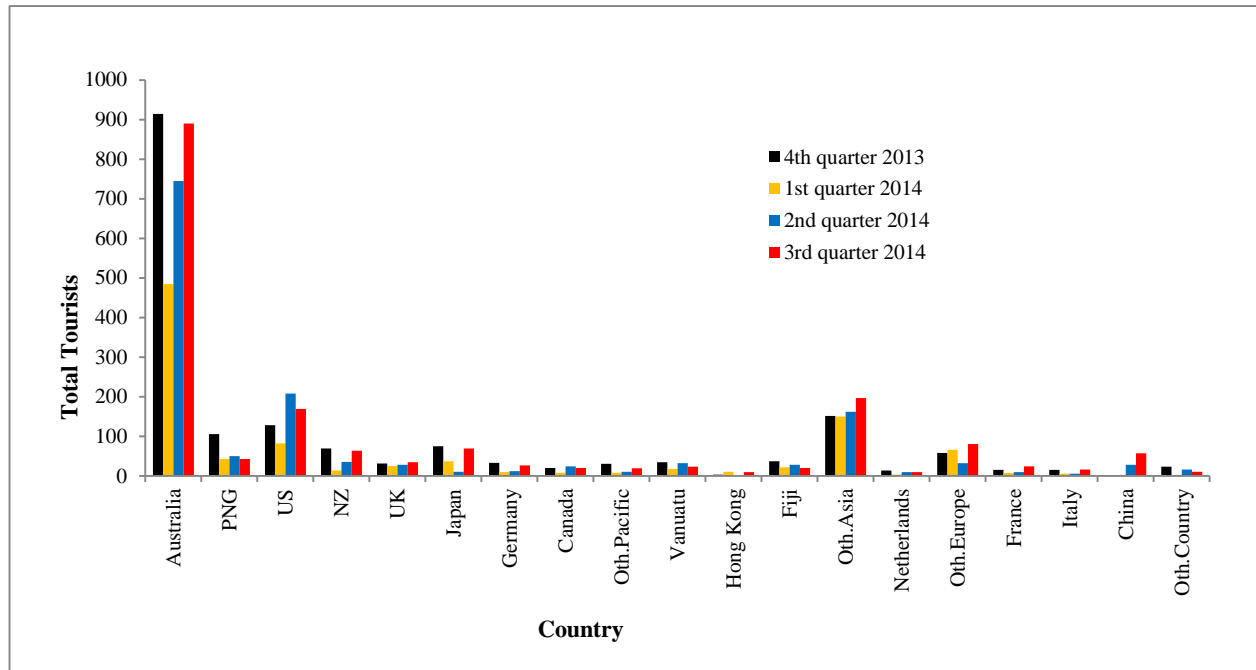


Table 5: Visitor Arrivals by Country of Residence by Purpose of Visit by sex: 3<sup>rd</sup> Quarter 2014

Country of Usual Residence	Business & Conference			Holiday & Vocation			Transit & Stopover			Visit friends/Relatives			Other			Total		
	M	F	T	M	F	T	M	F	T	M	F	T	M	F	T	M	F	All
Australia	620	196	816	500	381	881	7	2	9	175	153	328	342	145	487	1,644	877	2,521
PNG	120	29	149	19	15	34	8	-	8	22	15	37	41	6	47	210	65	275
US	67	17	84	100	68	168	-	1	1	18	15	33	24	14	38	209	115	324
NZ	184	24	208	36	26	62	1	-	1	26	20	46	53	34	87	300	104	404
UK	9	9	18	18	16	34	-	-	-	3	9	12	10	3	13	40	37	77
Japan	64	7	71	55	14	69	-	-	-	11	-	11	17	4	21	147	25	172
Germany	3	1	4	19	6	25	-	1	1	1	-	1	3	1	4	26	9	35
Canada	6	4	10	14	6	20	-	-	-	3	5	8	2	2	4	25	17	42
Oth.Pacific	70	39	109	8	7	15	2	2	4	7	7	14	28	14	42	115	69	184
Vanuatu	32	16	48	5	5	10	9	4	13	7	2	9	17	3	20	70	30	100
Hong Kong	6	1	7	7	2	9	-	-	-	3	5	8	3	1	4	19	9	28
Fiji	116	61	177	8	10	18	2	-	2	10	13	23	38	15	53	174	99	273
Oth.Asia	213	53	266	154	29	183	13	-	13	33	7	40	139	17	156	552	106	658
Netherlands	2	1	3	4	5	9	-	-	-	-	-	-	1	-	1	7	6	13
Oth.Europe	24	10	34	48	32	80	-	-	-	1	5	6	6	4	10	79	51	130
France	2	2	4	10	12	22	-	2	2	-	1	1	3	1	4	15	18	33
Italy	1	1	2	9	6	15	1	-	1	-	-	-	3	-	3	14	7	21
China	60	9	69	39	13	52	4	1	5	11	5	16	16	9	25	130	37	167
Oth.Country	9	2	11	5	5	10	-	-	-	-	1	1	2	2	4	16	10	26
<b>Total</b>	<b>1,608</b>	<b>482</b>	<b>2,090</b>	<b>1,058</b>	<b>658</b>	<b>1,716</b>	<b>47</b>	<b>13</b>	<b>60</b>	<b>331</b>	<b>263</b>	<b>594</b>	<b>748</b>	<b>275</b>	<b>1,023</b>	<b>3,792</b>	<b>1,691</b>	<b>5,483</b>
<b>Percentage</b>																		
Australia	24.6	7.8	32.4	19.8	15.1	34.9	0.3	0.1	0.4	6.9	6.1	13.0	13.6	5.8	19.3	65.2	34.8	100.0
PNG	43.6	10.5	54.2	6.9	5.5	12.4	2.9	-	2.9	8.0	5.5	13.5	14.9	2.2	17.1	76.4	23.6	100.0
US	20.7	5.2	25.9	30.9	21.0	51.9	-	0.3	0.3	5.6	4.6	10.2	7.4	4.3	11.7	64.5	35.5	100.0
NZ	45.5	5.9	51.5	8.9	6.4	15.3	0.2	-	0.2	6.4	5.0	11.4	13.1	8.4	21.5	74.3	25.7	100.0
UK	11.7	11.7	23.4	23.4	20.8	44.2	-	-	-	3.9	11.7	15.6	13.0	3.9	16.9	51.9	48.1	100.0
Japan	37.2	4.1	41.3	32.0	8.1	40.1	-	-	-	6.4	-	6.4	9.9	2.3	12.2	85.5	14.5	100.0
Germany	8.6	2.9	11.4	54.3	17.1	71.4	-	2.9	2.9	2.9	-	2.9	8.6	2.9	11.4	74.3	25.7	100.0
Canada	14.3	9.5	23.8	33.3	14.3	47.6	-	-	-	7.1	11.9	19.0	4.8	4.8	9.5	59.5	40.5	100.0
Oth.Pacific	38.0	21.2	59.2	4.3	3.8	8.2	1.1	1.1	2.2	3.8	3.8	7.6	15.2	7.6	22.8	62.5	37.5	100.0
Vanuatu	32.0	16.0	48.0	5.0	5.0	10.0	9.0	4.0	13.0	7.0	2.0	9.0	17.0	3.0	20.0	70.0	30.0	100.0
Hong Kong	21.4	3.6	25.0	25.0	7.1	32.1	-	-	-	10.7	17.9	28.6	10.7	3.6	14.3	67.9	32.1	100.0
Fiji	42.5	22.3	64.8	2.9	3.7	6.6	0.7	-	0.7	3.7	4.8	8.4	13.9	5.5	19.4	63.7	36.3	100.0
Oth.Asia	32.4	8.1	40.4	23.4	4.4	27.8	2.0	-	2.0	5.0	1.1	6.1	21.1	2.6	23.7	83.9	16.1	100.0
Netherlands	15.4	7.7	23.1	30.8	38.5	69.2	-	-	-	-	-	-	7.7	-	7.7	53.8	46.2	100.0
Oth.Europe	18.5	7.7	26.2	36.9	24.6	61.5	-	-	-	0.8	3.8	4.6	4.6	3.1	7.7	60.8	39.2	100.0
France	6.1	6.1	12.1	30.3	36.4	66.7	-	6.1	6.1	-	3.0	3.0	9.1	3.0	12.1	45.5	54.5	100.0
Italy	4.8	4.8	9.5	42.9	28.6	71.4	4.8	-	4.8	-	-	-	14.3	-	14.3	66.7	33.3	100.0
Oth.Country	34.6	7.7	42.3	19.2	19.2	38.5	-	-	-	-	3.8	3.8	7.7	7.7	15.4	61.5	38.5	100.0
<b>Total</b>	<b>29.3</b>	<b>8.8</b>	<b>38.1</b>	<b>19.3</b>	<b>12.0</b>	<b>31.3</b>	<b>0.9</b>	<b>0.2</b>	<b>1.1</b>	<b>6.0</b>	<b>4.8</b>	<b>10.8</b>	<b>13.6</b>	<b>5.0</b>	<b>18.7</b>	<b>69.2</b>	<b>30.8</b>	<b>100.0</b>

Chart 5: Visitors Arrival by Country of Residence by Purpose of Visit, 3rd quarter 2014

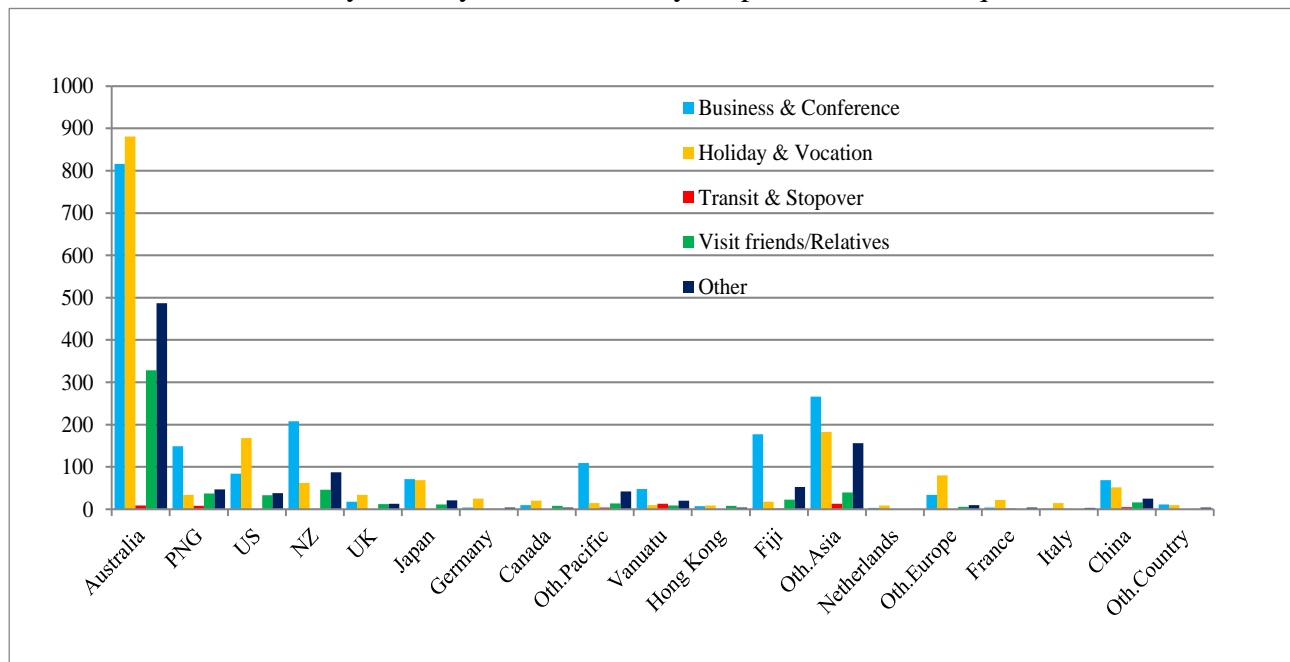


Table 6: Visitor Arrivals by Country of Residence by Age Groups by Sex: 3<sup>rd</sup> Quarter 2014

Country of Usual Residence	Age-Group																		Total		
	0-14		15-24		25-34		35-44		45-54		55-64		65+		Not Stated		M	F	All		
	M	F	M	F	M	F	M	F	M	F	M	F	M	F	M	F	M	F	All		
Australia	44	54	143	135	215	132	330	173	358	145	306	142	189	63	59	33	1,644	877	2,521		
PNG	4	3	1	8	46	17	59	17	55	13	26	3	5	-	14	4	210	65	275		
US	2	1	9	11	28	15	25	12	46	22	51	31	36	18	12	5	209	115	324		
NZ	3	5	10	25	29	14	49	11	86	18	79	23	36	3	8	5	300	104	404		
UK	1	-	8	8	9	6	5	7	8	7	4	5	4	2	1	2	40	37	77		
Japan	1	-	21	6	22	6	25	6	32	2	21	2	18	2	7	1	147	25	172		
Germany	1	-	1	-	4	-	3	2	7	6	5	1	5	-	-	-	26	9	35		
Canada	1	3	1	-	4	1	4	2	5	4	6	4	3	2	1	1	25	17	42		
Oth.Pacific	1	1	5	4	20	10	26	16	25	12	26	11	10	10	2	5	115	69	184		
Vanuatu	-	1	6	-	13	8	19	7	19	6	6	4	5	3	2	1	70	30	100		
Hong Kong	-	3	-	1	-	-	3	1	11	2	4	1	1	-	-	1	19	9	28		
Fiji	3	-	10	5	38	20	41	33	43	26	24	4	8	2	7	9	174	99	273		
Oth.Asia	1	-	39	15	127	32	138	22	136	21	78	10	19	2	14	4	552	106	658		
Netherlands	-	1	1	-	-	1	3	1	1	2	1	1	1	-	-	-	7	6	13		
Oth.Europe	2	4	8	4	17	11	17	9	17	11	15	7	3	1	-	4	79	51	130		
France	-	-	-	6	3	2	1	3	6	1	4	5	1	-	-	1	15	18	33		
Italy	2	-	23	8	33	19	24	7	33	1	7	1	3	-	5	1	130	37	167		
China	-	-	-	1	3	1	2	1	2	2	5	1	2	1	-	-	14	7	21		
Oth.Country	-	-	-	-	2	3	5	4	4	1	1	-	4	-	-	2	16	10	26		
<b>Total</b>	<b>66</b>	<b>76</b>	<b>286</b>	<b>237</b>	<b>613</b>	<b>298</b>	<b>779</b>	<b>334</b>	<b>894</b>	<b>302</b>	<b>669</b>	<b>256</b>	<b>353</b>	<b>109</b>	<b>132</b>	<b>79</b>	<b>3,792</b>	<b>1,691</b>	<b>5,483</b>		
	<b>Percentage</b>																				
Australia	1.7	2.1	5.7	5.4	8.5	5.2	13.1	6.9	14.2	5.8	12.1	5.6	7.5	2.5	2.3	1.3	65.2	34.8	100.0		
PNG	1.5	1.1	0.4	2.9	16.7	6.2	21.5	6.2	20.0	4.7	9.5	1.1	1.8	-	5.1	1.5	76.4	23.6	100.0		
US	0.6	0.3	2.8	3.4	8.6	4.6	7.7	3.7	14.2	6.8	15.7	9.6	11.1	5.6	3.7	1.5	64.5	35.5	100.0		
NZ	0.7	1.2	2.5	6.2	7.2	3.5	12.1	2.7	21.3	4.5	19.6	5.7	8.9	0.7	2.0	1.2	74.3	25.7	100.0		
UK	1.3	-	10.4	10.4	11.7	7.8	6.5	9.1	10.4	9.1	5.2	6.5	5.2	2.6	1.3	2.6	51.9	48.1	100.0		
Japan	0.6	-	12.2	3.5	12.8	3.5	14.5	3.5	18.6	1.2	12.2	1.2	10.5	1.2	4.1	0.6	85.5	14.5	100.0		
Germany	2.9	-	2.9	-	11.4	-	8.6	5.7	20.0	17.1	14.3	2.9	14.3	-	-	-	74.3	25.7	100.0		
Canada	2.4	7.1	2.4	-	9.5	2.4	9.5	4.8	11.9	9.5	14.3	9.5	7.1	4.8	2.4	2.4	59.5	40.5	100.0		
Oth.Pacific	0.5	0.5	2.7	2.2	10.9	5.4	14.1	8.7	13.6	6.5	14.1	6.0	5.4	5.4	1.1	2.7	62.5	37.5	100.0		
Vanuatu	-	1.0	6.0	-	13.0	8.0	19.0	7.0	19.0	6.0	6.0	4.0	5.0	3.0	2.0	1.0	70.0	30.0	100.0		
Hong Kong	-	10.7	-	3.6	-	-	10.7	3.6	39.3	7.1	14.3	3.6	3.6	-	-	3.6	67.9	32.1	100.0		
Fiji	1.1	-	3.7	1.8	13.9	7.3	15.0	12.1	15.8	9.5	8.8	1.5	2.9	0.7	2.6	3.3	63.7	36.3	100.0		
Oth.Asia	0.2	-	5.9	2.3	19.3	4.9	21.0	3.3	20.7	3.2	11.9	1.5	2.9	0.3	2.1	0.6	83.9	16.1	100.0		
Netherlands	-	7.7	7.7	-	-	7.7	23.1	7.7	7.7	15.4	7.7	7.7	7.7	-	-	-	53.8	46.2	100.0		
Oth.Europe	1.5	3.1	6.2	3.1	13.1	8.5	13.1	6.9	13.1	8.5	11.5	5.4	2.3	0.8	-	3.1	60.8	39.2	100.0		
France	-	-	-	18.2	9.1	6.1	3.0	9.1	18.2	3.0	12.1	15.2	3.0	-	-	3.0	45.5	54.5	100.0		
Italy	1.2	-	13.8	4.8	19.8	11.4	14.4	4.2	19.8	0.6	4.2	0.6	1.8	-	3.0	0.6	77.8	22.2	100.0		
China	-	-	-	4.8	14.3	4.8	9.5	4.8	9.5	9.5	23.8	4.8	9.5	4.8	-	-	66.7	33.3	100.0		
Oth.Country	-	-	-	-	7.7	11.5	19.2	15.4	15.4	3.8	3.8	-	15.4	-	-	7.7	61.5	38.5	100.0		
<b>Total</b>	<b>1.2</b>	<b>1.4</b>	<b>5.2</b>	<b>4.3</b>	<b>11.2</b>	<b>5.4</b>	<b>14.2</b>	<b>6.1</b>	<b>16.3</b>	<b>5.5</b>	<b>12.2</b>	<b>4.7</b>	<b>6.4</b>	<b>2.0</b>	<b>2.4</b>	<b>1.4</b>	<b>69.2</b>	<b>30.8</b>	<b>100.0</b>		

Chart 6: Visitor Arrivals by Age group category by sex, 3<sup>rd</sup> quarter 2014

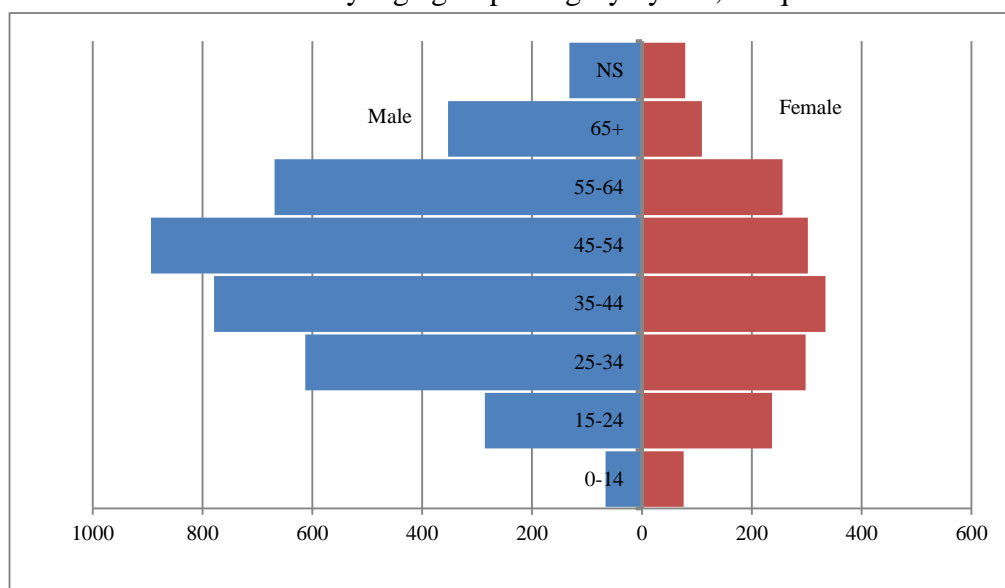


Table 7: Visitor Arrivals by Country of Residence by Occupation and Sex: 3<sup>rd</sup> Quarter 2014

Country of Usual Residence	Professional and Technical		Administration and Managerial		Clerical & Related Work		Sales Worker		Service Worker		Agriculture Forestry Fishery		Production & Related Work		Other		No Work		Total		
	M	F	M	F	M	F	M	F	M	F	M	F	M	F	M	F	M	F	M	F	All
	Australia	582	401	197	71	2	9	7	3	63	47	14	5	113	-	520	261	146	80	1,644	877
PNG	70	19	30	7	1	-	-	-	5	3	-	1	8	-	91	31	5	4	210	65	275
US	63	30	7	4	-	-	-	-	15	6	-	-	3	-	91	49	30	26	209	115	324
NZ	109	46	55	8	-	2	3	-	7	7	3	1	15	-	99	34	9	6	300	104	404
UK	14	23	6	1	-	-	-	-	1	1	-	-	-	-	15	11	4	1	40	37	77
Japan	45	9	11	1	6	1	1	-	1	-	1	1	-	-	71	10	11	3	147	25	172
Germany	10	1	2	1	-	-	-	-	1	-	-	-	-	-	9	7	4	-	26	9	35
Canada	8	6	4	2	-	-	-	-	-	2	-	-	-	-	11	7	2	-	25	17	42
Oth.Pacific	35	19	1	5	4	1	1	-	16	7	-	-	1	1	54	32	3	4	115	69	184
Vanuatu	21	9	4	2	-	-	-	-	7	4	-	-	5	-	29	15	4	-	70	30	100
Hong Kong	2	6	7	-	-	-	-	-	-	-	-	-	-	-	9	3	1	-	19	9	28
Fiji	60	30	15	6	1	3	-	-	2	-	3	-	-	-	89	55	4	5	174	99	273
Oth.Asia	95	37	67	8	2	2	47	2	5	5	12	-	53	1	229	37	42	14	552	106	658
Netherlands	2	1	1	1	-	-	-	-	-	-	-	-	-	-	3	4	1	-	7	6	13
Oth.Europe	26	22	11	4	-	-	2	-	-	3	-	-	4	-	30	16	6	6	79	51	130
France	6	11	-	-	-	-	-	-	-	-	-	-	1	-	7	6	1	1	15	18	33
Italy	2	2	-	-	-	-	-	-	-	-	-	-	-	1	9	3	3	1	14	7	21
China	33	5	21	6	1	-	5	2	3	3	2	-	6	-	39	9	20	12	130	37	167
Oth.Country	7	2	1	-	-	-	-	-	-	2	-	-	-	-	6	4	2	2	16	10	26
<b>Total</b>	<b>1,190</b>	<b>679</b>	<b>440</b>	<b>127</b>	<b>17</b>	<b>18</b>	<b>66</b>	<b>7</b>	<b>126</b>	<b>90</b>	<b>35</b>	<b>8</b>	<b>209</b>	<b>3</b>	<b>1,411</b>	<b>594</b>	<b>298</b>	<b>165</b>	<b>3,792</b>	<b>1,691</b>	<b>5,483</b>
	<b>Percentage</b>																				
Australia	23.1	15.9	7.8	2.8	0.1	0.4	0.3	0.1	2.5	1.9	0.6	0.2	4.5	-	20.6	10.4	5.8	3.2	65.2	34.8	100.0
PNG	25.5	6.9	10.9	2.5	0.4	-	-	-	1.8	1.1	-	0.4	2.9	-	33.1	11.3	1.8	1.5	76.4	23.6	100.0
US	19.4	9.3	2.2	1.2	-	-	-	-	4.6	1.9	-	-	0.9	-	28.1	15.1	9.3	8.0	64.5	35.5	100.0
NZ	27.0	11.4	13.6	2.0	-	0.5	0.7	-	1.7	1.7	0.7	0.2	3.7	-	24.5	8.4	2.2	1.5	74.3	25.7	100.0
UK	18.2	29.9	7.8	1.3	-	-	-	-	1.3	1.3	-	-	-	-	19.5	14.3	5.2	1.3	51.9	48.1	100.0
Japan	26.2	5.2	6.4	0.6	3.5	0.6	0.6	-	0.6	-	0.6	0.6	-	-	41.3	5.8	6.4	1.7	85.5	14.5	100.0
Germany	28.6	2.9	5.7	2.9	-	-	-	-	2.9	-	-	-	-	-	25.7	20.0	11.4	-	74.3	25.7	100.0
Canada	19.0	14.3	9.5	4.8	-	-	-	-	-	4.8	-	-	-	-	26.2	16.7	4.8	-	59.5	40.5	100.0
Oth.Pacific	19.0	10.3	0.5	2.7	2.2	0.5	0.5	-	8.7	3.8	-	-	0.5	0.5	29.3	17.4	1.6	2.2	62.5	37.5	100.0
Vanuatu	21.0	9.0	4.0	2.0	-	-	-	-	7.0	4.0	-	-	5.0	-	29.0	15.0	4.0	-	70.0	30.0	100.0
Hong Kong	7.1	21.4	25.0	-	-	-	-	-	-	-	-	-	-	-	32.1	10.7	3.6	-	67.9	32.1	100.0
Fiji	22.0	11.0	5.5	2.2	0.4	1.1	-	-	0.7	-	1.1	-	-	-	32.6	20.1	1.5	1.8	63.7	36.3	100.0
Oth.Asia	14.4	5.6	10.2	1.2	0.3	0.3	7.1	0.3	0.8	0.8	1.8	-	8.1	0.2	34.8	5.6	6.4	2.1	83.9	16.1	100.0
Netherlands	15.4	7.7	7.7	7.7	-	-	-	-	-	-	-	-	-	-	23.1	30.8	7.7	-	53.8	46.2	100.0
Oth.Europe	20.0	16.9	8.5	3.1	-	-	1.5	-	-	2.3	-	-	3.1	-	23.1	12.3	4.6	4.6	60.8	39.2	100.0
France	18.2	33.3	-	-	-	-	-	-	-	-	-	-	3.0	-	21.2	18.2	3.0	3.0	45.5	54.5	100.0
Italy	9.5	9.5	-	-	-	-	-	-	-	-	-	-	-	4.8	42.9	14.3	14.3	4.8	66.7	33.3	100.0
China	19.8	3.0	12.6	3.6	0.6	-	3.0	1.2	1.8	1.8	1.2	-	3.6	-	23.4	5.4	12.0	7.2	77.8	22.2	100.0
Oth.Country	4.2	1.2	0.6	-	-	-	-	-	-	1.2	-	-	-	-	3.6	2.4	1.2	1.2	9.6	6.0	15.6
<b>Total</b>	<b>21.7</b>	<b>12.4</b>	<b>8.0</b>	<b>2.3</b>	<b>0.3</b>	<b>0.3</b>	<b>1.2</b>	<b>0.1</b>	<b>2.3</b>	<b>1.6</b>	<b>0.6</b>	<b>0.1</b>	<b>3.8</b>	<b>0.1</b>	<b>25.7</b>	<b>10.8</b>	<b>5.4</b>	<b>3.0</b>	<b>69.2</b>	<b>30.8</b>	<b>100.0</b>

Chart 7: Visitors Arrival by occupation by sex, 3<sup>rd</sup> quarter 2014

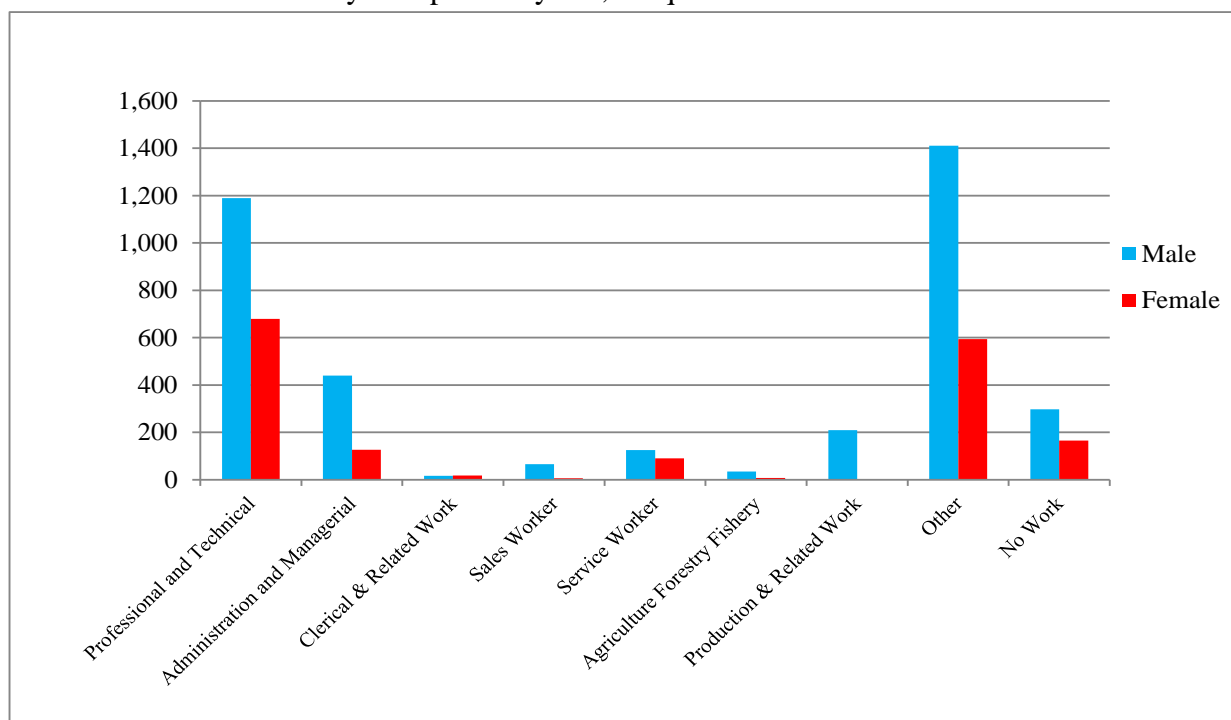
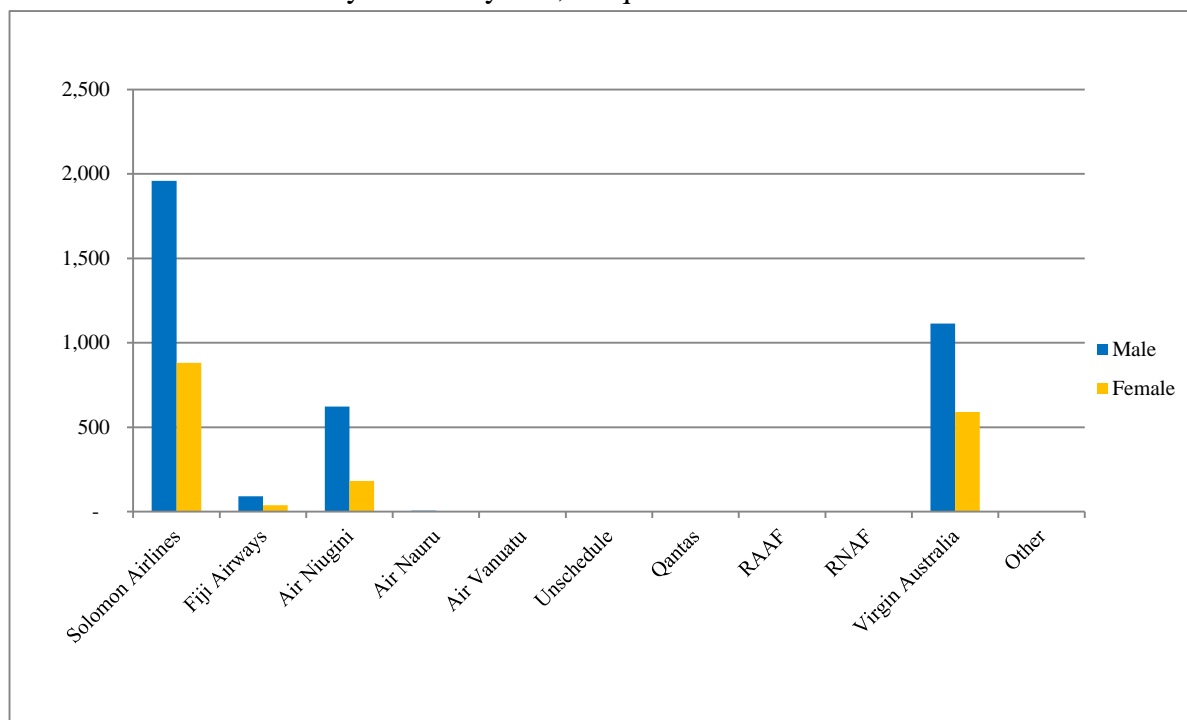


Table 8: Visitor Arrivals by Country of residence by Carrier by Sex: 3<sup>rd</sup> Quarter 2014

Country of Usual Residence	Solomon Airlines		Fiji Airways		Air Niugini		Air Nauru		Air Vanuatu		Unschedule		Qantas		RAAF		RNAS		Virgin Australia		Other		Total			
	M	F	M	F	M	F	M	F	M	F	M	F	M	F	M	F	M	F	M	F	M	F	M	F	All	
	Australia	944	515	1	1	29	14	4	-	-	-	2	-	-	-	-	-	-	-	664	347	-	-	1,644	877	2,521
PNG	21	3	1	-	177	60	-	-	-	-	-	-	-	-	-	-	-	-	11	2	-	-	210	65	275	
US	104	33	18	15	25	18	-	-	-	-	-	-	-	-	-	-	-	-	62	49	-	-	209	115	324	
NZ	139	30	2	2	11	1	-	-	-	-	-	-	-	-	-	-	-	-	148	71	-	-	300	104	404	
UK	25	17	-	-	9	2	-	-	-	-	-	-	-	-	-	-	-	-	6	18	-	-	40	37	77	
Japan	40	8	-	1	85	11	1	-	-	-	-	-	-	-	-	-	-	-	21	5	-	-	147	25	172	
Germany	9	2	-	-	12	2	-	-	-	-	-	-	-	-	-	-	-	-	5	5	-	-	26	9	35	
Canada	17	12	2	-	2	1	-	-	-	-	-	-	-	-	-	-	-	-	4	4	-	-	25	17	42	
Oth.Pacific	63	38	19	4	15	6	-	-	-	-	-	-	-	-	-	-	-	-	18	21	-	-	115	69	184	
Vanuatu	50	25	6	2	10	3	-	-	-	-	-	-	-	-	-	-	-	-	4	-	-	-	70	30	100	
Hong Kong	6	7	3	-	6	-	-	-	-	-	-	-	-	-	-	-	-	-	4	2	-	-	19	9	28	
Fiji	110	68	21	9	29	9	-	-	-	-	-	-	-	-	-	-	-	-	14	13	-	-	174	99	273	
Oth.Asia	338	66	2	-	99	13	-	-	-	-	-	-	-	-	-	-	-	-	113	27	-	-	552	106	658	
Netherlands	5	4	-	-	1	1	-	-	-	-	-	-	-	-	-	-	-	-	1	1	-	-	7	6	13	
Oth.Europe	39	28	3	1	13	8	-	-	-	-	-	-	-	-	-	-	-	-	24	14	-	-	79	51	130	
France	10	10	-	-	1	3	-	-	-	-	-	-	-	-	-	-	-	-	4	5	-	-	15	18	33	
Italy	12	6	-	-	1	1	-	-	-	-	-	-	-	-	-	-	-	-	1	-	-	-	14	7	21	
China	18	5	12	3	93	26	-	-	-	-	-	-	-	-	-	-	-	-	7	3	-	-	130	37	167	
Oth.Country	9	5	-	-	5	2	-	-	-	-	-	-	-	-	-	-	-	-	2	3	-	-	16	10	26	
<b>Total</b>	<b>1,959</b>	<b>882</b>	<b>90</b>	<b>38</b>	<b>623</b>	<b>181</b>	<b>5</b>	<b>-</b>	<b>-</b>	<b>-</b>	<b>2</b>	<b>-</b>	<b>-</b>	<b>-</b>	<b>-</b>	<b>-</b>	<b>-</b>	<b>1,113</b>	<b>590</b>	<b>-</b>	<b>-</b>	<b>3,792</b>	<b>1,691</b>	<b>5,483</b>		
	<b>Percentage</b>																									
Australia	37.4	20.4	-	-	1.2	0.6	0.2	-	-	-	0.1	-	-	-	-	-	-	-	26.3	13.8	-	-	65.2	34.8	100.0	
PNG	7.6	1.1	0.4	-	64.4	21.8	-	-	-	-	-	-	-	-	-	-	-	-	4.0	0.7	-	-	76.4	23.6	100.0	
US	32.1	10.2	5.6	4.6	7.7	5.6	-	-	-	-	-	-	-	-	-	-	-	-	19.1	15.1	-	-	64.5	35.5	100.0	
NZ	34.4	7.4	0.5	0.5	2.7	0.2	-	-	-	-	-	-	-	-	-	-	-	-	36.6	17.6	-	-	74.3	25.7	100.0	
UK	32.5	22.1	-	-	11.7	2.6	-	-	-	-	-	-	-	-	-	-	-	-	7.8	23.4	-	-	51.9	48.1	100.0	
Japan	23.3	4.7	-	0.6	49.4	6.4	0.6	-	-	-	-	-	-	-	-	-	-	-	12.2	2.9	-	-	85.5	14.5	100.0	
Germany	25.7	5.7	-	-	34.3	5.7	-	-	-	-	-	-	-	-	-	-	-	-	14.3	14.3	-	-	74.3	25.7	100.0	
Canada	40.5	28.6	4.8	-	4.8	2.4	-	-	-	-	-	-	-	-	-	-	-	-	9.5	9.5	-	-	59.5	40.5	100.0	
Oth.Pacific	34.2	20.7	10.3	2.2	8.2	3.3	-	-	-	-	-	-	-	-	-	-	-	-	9.8	11.4	-	-	62.5	37.5	100.0	
Vanuatu	50.0	25.0	6.0	2.0	10.0	3.0	-	-	-	-	-	-	-	-	-	-	-	-	4.0	-	-	-	70.0	30.0	100.0	
Hong Kong	21.4	25.0	10.7	-	21.4	-	-	-	-	-	-	-	-	-	-	-	-	-	14.3	7.1	-	-	67.9	32.1	100.0	
Fiji	40.3	24.9	7.7	3.3	10.6	3.3	-	-	-	-	-	-	-	-	-	-	-	-	5.1	4.8	-	-	63.7	36.3	100.0	
Oth.Asia	51.4	10.0	0.3	-	15.0	2.0	-	-	-	-	-	-	-	-	-	-	-	-	17.2	4.1	-	-	83.9	16.1	100.0	
Netherlands	38.5	30.8	-	-	7.7	7.7	-	-	-	-	-	-	-	-	-	-	-	-	7.7	7.7	-	-	53.8	46.2	100.0	
Oth.Europe	30.0	21.5	2.3	0.8	10.0	6.2	-	-	-	-	-	-	-	-	-	-	-	-	18.5	10.8	-	-	60.8	39.2	100.0	
France	30.3	30.3	-	-	3.0	9.1	-	-	-	-	-	-	-	-	-	-	-	-	12.1	15.2	-	-	45.5	54.5	100.0	
Italy	57.1	28.6	-	-	4.8	4.8	-	-	-	-	-	-	-	-	-	-	-	-	4.8	-	-	-	66.7	33.3	100.0	
China	10.8	3.0	7.2	1.8	55.7	15.6	-	-	-	-	-	-	-	-	-	-	-	-	4.2	1.8	-	-	77.8	22.2	100.0	
Oth.Country	34.6	19.2	-	-	19.2	7.7	-	-	-	-	-	-	-	-	-	-	-	-	7.7	11.5	-	-	61.5	38.5	100.0	
<b>Total</b>	<b>35.7</b>	<b>16.1</b>	<b>1.6</b>	<b>0.7</b>	<b>11.4</b>	<b>3.3</b>	<b>0.1</b>	<b>-</b>	<b>-</b>	<b>-</b>	<b>-</b>	<b>-</b>	<b>-</b>	<b>-</b>	<b>-</b>	<b>-</b>	<b>-</b>	<b>20.3</b>	<b>10.8</b>	<b>-</b>	<b>-</b>	<b>69.2</b>	<b>30.8</b>	<b>100.0</b>		

Chart 8: Visitor Arrivals by Carrier by Sex, 3<sup>rd</sup> quarter 2014



## Appendix 1

### Concepts and Definitions

Persons entering Solomon Islands classify themselves into three (3) categories; returning resident, intending resident, and visitor. The concepts and definitions of the various categories are as follows:

#### (i) *Returning residents*

- Solomon Islanders and non-Solomon Islanders who have left the country and are returning to continue their residence.
- Non Solomon Islanders includes resident permit holders and Diplomatic officials, and their immediate family members. This may also includes legal or official arrangements that fall out side of the above.

#### (ii) *Intending residents*

- Non-Solomon Islander who wish to take up residence in Solomon Islands.

#### (iii) *Visitors*

- Any traveller who is not a Solomon Islander and who purposely spend less time – at most a period of 120 days<sup>2</sup>, in the country and with the intention and purpose of visiting.
- *Tourist*
  - Visitors who further classify themselves stating their visit are purposely for '*holiday and vacation*'. This exclude, tourist arrivals by cruise ships.
  - Wife accompanying husband on business purpose is a private tourist unless also working.
  - *World Tourism Organization WTO definition of Tourism:*  
*It comprises the activities of persons travelling to and staying in places outside their usual environment for not more than one consecutive year for leisure, business and other purposes not related to the exercise of an activity remunerated from within the place visited*<sup>3</sup>.

#### ( iv) *Markets*

- *Country of Usual Residence*

---

<sup>2</sup> Solomon Islands 1993 Statistical Yearbook.

<sup>3</sup> Dimensions of Hospitality, Study guide 1. p17

Appendix 2

Table 9: Intending Resident Arrivals by Country of Residence by Occupation and Sex: 3<sup>rd</sup> Quarter 2014

Country of Usual Residence	Professional and Technical		Administration and Managerial		Clerical & Related Work		Sales Worker		Service Worker		Agriculture Forestry Fishery		Production & Related Work		Other		No Work		Total		All
	M	F	M	F	M	F	M	F	M	F	M	F	M	F	M	F	M	F	M	F	
Australia	29	27	11	6	2	-	-	-	35	12	-	-	-	-	40	40	9	14	126	99	225
PNG	6	1	1	-	-	-	-	-	3	3	-	-	-	-	1	4	3	1	14	9	23
US	3	-	1	-	-	-	-	-	-	-	1	-	-	-	-	1	2	6	3	9	
NZ	4	3	-	1	-	-	-	-	5	2	-	-	-	-	7	3	1	-	17	9	26
UK	1	-	-	-	-	-	-	-	-	-	-	-	-	-	-	-	-	1	-	1	
Japan	3	1	-	1	-	-	-	-	-	1	-	-	-	-	3	4	-	1	6	8	14
Germany	-	-	-	-	-	-	-	-	-	-	-	-	-	-	-	-	-	-	-	-	-
Canada	-	-	-	-	-	-	-	-	-	-	-	-	-	-	-	-	-	-	-	-	-
Oth.Pacific	5	7	3	2	-	-	-	-	3	1	4	-	11	1	5	3	3	2	34	16	50
Vanuatu	3	-	-	-	-	-	-	-	-	-	-	-	-	-	1	1	1	4	1	5	
Hong Kong	-	-	-	-	-	-	-	-	-	-	-	-	-	-	-	-	2	-	2	2	
Fiji	4	1	5	-	-	-	-	-	1	-	-	-	-	-	10	5	6	3	26	9	35
Oth.Asia	32	12	40	11	1	-	15	-	4	7	19	-	97	-	199	16	59	5	466	51	517
Netherlands	-	2	-	-	-	-	-	-	-	1	-	-	-	-	-	-	2	-	5	5	
Oth.Europe	4	2	-	1	-	-	-	-	-	-	-	-	1	-	3	-	1	-	9	3	12
France	1	-	-	-	-	-	-	-	-	-	-	-	-	-	-	-	-	1	-	1	
Italy	1	1	-	-	-	-	-	-	-	-	-	-	-	-	1	-	-	1	2	2	4
China	7	1	20	7	2	-	5	3	4	1	2	-	2	-	27	7	33	4	102	23	125
Oth.Country	3	1	1	-	-	-	-	-	-	1	-	-	2	-	-	-	2	1	8	3	11
Total	106	59	82	29	5	-	20	3	55	29	26	-	113	1	296	84	119	38	822	243	1,065
	Percentage																				
Australia	12.9	12.0	4.9	2.7	0.9	-	-	-	15.6	5.3	-	-	-	-	17.8	17.8	4.0	6.2	56.0	44.0	100.0
PNG	26.1	4.3	4.3	-	-	-	-	-	13.0	13.0	-	-	-	-	4.3	17.4	13.0	4.3	60.9	39.1	100.0
US	33.3	-	11.1	-	-	-	-	-	-	-	11.1	-	-	-	-	11.1	22.2	66.7	33.3	100.0	
NZ	15.4	11.5	-	3.8	-	-	-	-	19.2	7.7	-	-	-	-	26.9	11.5	3.8	-	65.4	34.6	100.0
UK	100.0	-	-	-	-	-	-	-	-	-	-	-	-	-	-	-	-	-	100.0	-	100.0
Japan	21.4	7.1	-	7.1	-	-	-	-	-	7.1	-	-	-	-	21.4	28.6	-	7.1	42.9	57.1	100.0
Germany	-	-	-	-	-	-	-	-	-	-	-	-	-	-	-	-	-	-	-	-	-
Canada	-	-	-	-	-	-	-	-	-	-	-	-	-	-	-	-	-	-	-	-	-
Oth.Pacific	10.0	14.0	6.0	4.0	-	-	-	-	6.0	2.0	8.0	-	22.0	2.0	10.0	6.0	6.0	4.0	68.0	32.0	100.0
Vanuatu	60.0	-	-	-	-	-	-	-	-	-	-	-	-	-	-	20.0	20.0	-	80.0	20.0	100.0
Hong Kong	-	-	-	-	-	-	-	-	-	-	-	-	-	-	-	-	100.0	-	100.0	100.0	
Fiji	11.4	2.9	14.3	-	-	-	-	-	2.9	-	-	-	-	-	28.6	14.3	17.1	8.6	74.3	25.7	100.0
Oth.Asia	6.2	2.3	7.7	2.1	0.2	-	2.9	-	0.8	1.4	3.7	-	18.8	-	38.5	3.1	11.4	1.0	90.1	9.9	100.0
Netherlands	-	40.0	-	-	-	-	-	-	-	20.0	-	-	-	-	-	-	-	40.0	-	100.0	100.0
Oth.Europe	33.3	16.7	-	8.3	-	-	-	-	-	-	-	-	8.3	-	25.0	-	8.3	-	75.0	25.0	100.0
France	100.0	-	-	-	-	-	-	-	-	-	-	-	-	-	-	-	-	-	100.0	-	100.0
Italy	25.0	25.0	-	-	-	-	-	-	-	-	-	-	-	-	25.0	-	-	25.0	50.0	50.0	100.0
China	5.6	0.8	16.0	5.6	1.6	-	4.0	2.4	3.2	0.8	1.6	-	1.6	-	21.6	5.6	26.4	3.2	81.6	18.4	100.0
Oth.Country	27.3	9.1	9.1	-	-	-	-	-	-	9.1	-	-	18.2	-	-	-	18.2	9.1	72.7	27.3	100.0
Total	10.0	5.5	7.7	2.7	0.5	-	1.9	0.3	5.2	2.7	2.4	-	10.6	0.1	27.8	7.9	11.2	3.6	77.2	22.8	100.0

Table 10: Intending Resident Arrivals by Country of Residence by Age Groups by Sex: 3<sup>rd</sup> Quarter 2014

Country of Usual Residence	Age-Group																		Total		
	0-14		15-24		25-34		35-44		45-54		55-64		65+		Not Stated		M	F	All		
	M	F	M	F	M	F	M	F	M	F	M	F	M	F	M	F	M	F	All		
Australia	8	8		3	15	21	26	24	38	20	24	9	5	2	10	12	126	99	225		
PNG	2	-			2	-	2	3	5	4		1	-	-	3	1	14	9	23		
US	-	-	1		2	-	1		1	-			-	1	1	2	6	3	9		
NZ	-	-	2	1	1	4	3	4	4	-	5		1	-	1		17	9	26		
UK	-	-			-	-			-	-			1	-			1	-	1		
Japan	2	1		1	3	2		3	-	-	1		-	1			6	8	14		
Germany	-	-			-	-			-	-			-	-			-	-	-		
Canada	-	-			-	-			-	-			-	-			-	-	-		
Oth.Pacific	-	2	1	2	14	3	7	4	4	4	2		1	-	5	1	34	16	50		
Vanuatu	-	-	2		1	1	1		-	-			-	-			4	1	5		
Hong Kong	-	-			-	-			-	-			-	-		2	-	2	2		
Fiji	1	1	1		5	4	4	1	1	-	7	1	1	-	6	2	26	9	35		
Oth.Asia	4	1	19	9	114	11	148	11	118	11	45	4	6	2	12	2	466	51	517		
Netherlands	-	1			-	-		1	-	2			-	-		1	-	5	5		
Oth.Europe	-	-			3	1	3		1	2	2		-	-			9	3	12		
France	-	-			1	-			-	-			-	-			1	-	1		
Italy	-	-			1	-	1		1	-	1		-	-			2	2	4		
China	-	-	25	4	37	11	16	4	8	1	8	1	-	1	8	1	102	23	125		
Oth.Country	-	-			4	1	1		1	1	2	1	-	-			8	3	11		
Total	17	14	51	20	203	59	212	56	182	45	96	18	15	7	46	24	822	243	1,065		
	<b>Percentage</b>																				
Australia	3.6	3.6	-	1.3	6.7	9.3	11.6	10.7	16.9	8.9	10.7	4.0	2.2	0.9	4.4	5.3	56.0	44.0	100.0		
PNG	8.7	-	-	-	8.7	-	8.7	13.0	21.7	17.4	-	4.3	-	-	13.0	4.3	60.9	39.1	100.0		
US	-	-	11.1	-	22.2	-	11.1	-	11.1	-	-	-	-	11.1	11.1	22.2	66.7	33.3	100.0		
NZ	-	-	7.7	3.8	3.8	15.4	11.5	15.4	15.4	-	19.2	-	3.8	-	3.8	-	65.4	34.6	100.0		
UK	-	-	-	-	-	-	-	-	-	-	-	-	100.0	-	-	-	100.0	-	100.0		
Japan	14.3	7.1	-	7.1	21.4	14.3	-	21.4	-	-	7.1	-	-	7.1	-	-	42.9	57.1	100.0		
Germany	-	-	-	-	-	-	-	-	-	-	-	-	-	-	-	-	-	-	-		
Canada	-	-	-	-	-	-	-	-	-	-	-	-	-	-	-	-	-	-	-		
Oth.Pacific	-	4.0	2.0	4.0	28.0	6.0	14.0	8.0	8.0	8.0	4.0	-	2.0	-	10.0	2.0	68.0	32.0	100.0		
Vanuatu	-	-	40.0	-	20.0	20.0	20.0	-	-	-	-	-	-	-	-	-	80.0	20.0	100.0		
Hong Kong	-	-	-	-	-	-	-	-	-	-	-	-	-	-	100.0	-	0.0	100.0	100.0		
Fiji	2.9	2.9	2.9	-	14.3	11.4	11.4	2.9	2.9	-	20.0	2.9	2.9	-	17.1	5.7	74.3	25.7	100.0		
Oth.Asia	0.8	0.2	3.7	1.7	22.1	2.1	28.6	2.1	22.8	2.1	8.7	0.8	1.2	0.4	2.3	0.4	90.1	9.9	100.0		
Netherlands	-	20.0	-	-	-	-	-	20.0	-	40.0	-	-	-	-	-	20.0	0.0	100.0	100.0		
Oth.Europe	-	-	-	-	25.0	8.3	25.0	-	8.3	16.7	16.7	-	-	-	-	-	75.0	25.0	100.0		
France	-	-	-	-	100.0	-	-	-	-	-	-	-	-	-	-	-	100.0	-	100.0		
Italy	-	-	-	-	25.0	-	-	25.0	25.0	-	-	25.0	-	-	-	-	50.0	50.0	100.0		
China	-	-	20.0	3.2	29.6	8.8	12.8	3.2	6.4	0.8	6.4	0.8	-	0.8	6.4	0.8	81.6	18.4	100.0		
Oth.Country	-	-	-	-	36.4	9.1	9.1	-	9.1	9.1	18.2	9.1	-	-	-	-	72.7	27.3	100.0		
Total	1.6	1.3	4.8	1.9	19.1	5.5	19.9	5.3	17.1	4.2	9.0	1.7	1.4	0.7	4.3	2.3	77.2	22.8	100.0		



Table 11: Returning Resident Arrivals by Country of Residence by Age Groups by Sex: 3<sup>rd</sup> Quarter 2014

Country of Usual Residence	Age-Group																		Total		
	0-14		15-24		25-34		35-44		45-54		55-64		65+		Not Stated		M	F	All		
	M	F	M	F	M	F	M	F	M	F	M	F	M	F							
Australia	-	-	-	-	-	-	-	-	-	-	-	-	-	-	-	-	-	-	-		
PNG	-	-	-	-	-	-	-	-	-	-	-	-	-	-	-	-	-	-	-		
US	-	-	-	-	-	-	-	-	-	-	-	-	-	-	-	-	-	-	-		
NZ	-	-	-	-	-	-	-	-	-	-	-	-	-	-	-	-	-	-	-		
UK	-	-	-	-	-	-	-	-	-	-	-	-	-	-	-	-	-	-	-		
Japan	-	-	-	-	1	1	2	2	-	-	-	-	-	-	-	1	3	4	7		
Germany	-	-	-	-	-	-	-	-	-	-	-	-	-	-	-	-	-	-	-		
Canada	-	-	-	-	-	-	-	-	-	-	-	-	-	-	-	-	-	-	-		
Oth.Pacific	-	-	-	-	-	-	-	-	-	-	1	-	-	-	-	-	1	-	1		
Vanuatu	-	-	-	-	-	-	-	-	-	-	-	-	-	-	-	-	-	-	-		
Hong Kong	-	-	-	-	-	-	-	-	-	-	-	-	-	-	-	-	-	-	-		
Fiji	-	-	-	-	-	-	-	-	1	-	-	-	-	-	-	-	1	-	1		
Oth.Asia	-	-	-	-	-	-	-	-	-	-	-	-	-	-	-	-	-	-	-		
Netherlands	-	-	-	-	-	-	-	-	-	-	-	-	-	-	-	-	-	-	-		
Oth.Europe	-	-	-	-	-	-	-	-	-	-	-	-	-	-	-	-	-	-	-		
France	-	-	-	-	-	-	-	-	-	-	-	-	-	-	-	-	-	-	-		
Italy	-	-	-	-	-	-	-	-	-	-	-	-	-	-	-	-	-	-	-		
China	-	-	-	-	-	-	-	-	-	-	-	-	-	-	-	-	-	-	-		
Oth.Country	-	-	-	-	-	-	-	-	-	-	-	-	-	-	-	-	-	-	-		
Solomon Is.	92	91	168	149	509	298	648	348	509	213	278	98	73	15	123	84	2,400	1,296	3,696		
Total	92	91	168	149	510	299	650	350	510	213	279	98	73	15	123	85	2,405	1,300	3,705		
<u>Percentage</u>																					
Australia	-	-	-	-	-	-	-	-	-	-	-	-	-	-	-	-	-	-	-		
PNG	-	-	-	-	-	-	-	-	-	-	-	-	-	-	-	-	-	-	-		
US	-	-	-	-	-	-	-	-	-	-	-	-	-	-	-	-	-	-	-		
NZ	-	-	-	-	-	-	-	-	-	-	-	-	-	-	-	-	-	-	-		
UK	-	-	-	-	-	-	-	-	-	-	-	-	-	-	-	-	-	-	-		
Japan	-	-	-	-	14.3	14.3	28.6	28.6	-	-	-	-	-	-	-	14.3	42.9	57.1	100.0		
Germany	-	-	-	-	-	-	-	-	-	-	-	-	-	-	-	-	-	-	-		
Canada	-	-	-	-	-	-	-	-	-	-	-	-	-	-	-	-	-	-	-		
Oth.Pacific	-	-	-	-	-	-	-	-	-	-	100.0	-	-	-	-	-	100.0	-	100.0		
Vanuatu	-	-	-	-	-	-	-	-	-	-	-	-	-	-	-	-	-	-	-		
Hong Kong	-	-	-	-	-	-	-	-	-	-	-	-	-	-	-	-	-	-	-		
Fiji	-	-	-	-	-	-	-	-	100.0	-	-	-	-	-	-	-	100.0	-	100.0		
Oth.Asia	-	-	-	-	-	-	-	-	-	-	-	-	-	-	-	-	-	-	-		
Netherlands	-	-	-	-	-	-	-	-	-	-	-	-	-	-	-	-	-	-	-		
Oth.Europe	-	-	-	-	-	-	-	-	-	-	-	-	-	-	-	-	-	-	-		
France	-	-	-	-	-	-	-	-	-	-	-	-	-	-	-	-	-	-	-		
Italy	-	-	-	-	-	-	-	-	-	-	-	-	-	-	-	-	-	-	-		
China	-	-	-	-	-	-	-	-	-	-	-	-	-	-	-	-	-	-	-		
Oth.Country	-	-	-	-	-	-	-	-	-	-	-	-	-	-	-	-	-	-	-		
Solomon Is.	2.5	2.5	4.5	4.0	13.8	8.1	17.5	9.4	13.8	5.8	7.5	2.7	2.0	0.4	3.3	2.3	64.9	35.1	100.0		
Total	2.5	2.5	4.5	4.0	13.8	8.1	17.5	9.4	13.8	5.7	7.5	2.6	2.0	0.4	3.3	2.3	64.9	35.1	100.0		

Table 12: Returning Resident Arrivals by Country of Residence by Occupation and Sex: 3<sup>rd</sup> Quarter 2014

Country of Usual Residence	Professional and Technical		Administration and Managerial		Clerical & Related Work		Sales Worker		Service Worker		Agriculture Forestry Fishery		Production & Related Work		Other		No Work		Total		All
	M	F	M	F	M	F	M	F	M	F	M	F	M	F	M	F	M	F	M	F	
Australia	-	-	-	-	-	-	-	-	-	-	-	-	-	-	-	-	-	-	-	-	-
PNG	-	-	-	-	-	-	-	-	-	-	-	-	-	-	-	-	-	-	-	-	-
US	-	-	-	-	-	-	-	-	-	-	-	-	-	-	-	-	-	-	-	-	-
NZ	-	-	-	-	-	-	-	-	-	-	-	-	-	-	-	-	-	-	-	-	-
UK	-	-	-	-	-	-	-	-	-	-	-	-	-	-	-	-	-	-	-	-	-
Japan	-	3	1	1	-	-	-	-	-	-	-	-	-	-	2	-	-	-	3	4	7
Germany	-	-	-	-	-	-	-	-	-	-	-	-	-	-	-	-	-	-	-	-	-
Canada	-	-	-	-	-	-	-	-	-	-	-	-	-	-	-	-	-	-	-	-	-
Oth.Pacific	-	-	-	-	-	-	-	-	-	-	-	-	-	-	-	-	1	-	1	-	1
Vanuatu	-	-	-	-	-	-	-	-	-	-	-	-	-	-	-	-	-	-	-	-	-
Hong Kong	-	-	-	-	-	-	-	-	-	-	-	-	-	-	-	-	-	-	-	-	-
Fiji	-	-	-	-	-	-	-	-	-	-	-	-	1	-	-	-	-	-	1	-	1
Oth.Asia	-	-	-	-	-	-	-	-	-	-	-	-	-	-	-	-	-	-	-	-	-
Netherlands	-	-	-	-	-	-	-	-	-	-	-	-	-	-	-	-	-	-	-	-	-
Oth.Europe	-	-	-	-	-	-	-	-	-	-	-	-	-	-	-	-	-	-	-	-	-
France	-	-	-	-	-	-	-	-	-	-	-	-	-	-	-	-	-	-	-	-	-
Italy	-	-	-	-	-	-	-	-	-	-	-	-	-	-	-	-	-	-	-	-	-
China	-	-	-	-	-	-	-	-	-	-	-	-	-	-	-	-	-	-	-	-	-
Oth.Country	-	-	-	-	-	-	-	-	-	-	-	-	-	-	-	-	-	-	-	-	-
Solomon Is.	790	393	274	112	10	26	61	8	35	121	44	6	68	1	936	477	182	152	2,400	1,296	3,696
Total	790	396	275	113	10	26	61	8	35	121	44	6	69	1	938	477	183	152	2,405	1,300	3,705
<u>Percentage</u>																					
Australia	-	-	-	-	-	-	-	-	-	-	-	-	-	-	-	-	-	-	-	-	-
PNG	-	-	-	-	-	-	-	-	-	-	-	-	-	-	-	-	-	-	-	-	-
US	-	-	-	-	-	-	-	-	-	-	-	-	-	-	-	-	-	-	-	-	-
NZ	-	-	-	-	-	-	-	-	-	-	-	-	-	-	-	-	-	-	-	-	-
UK	-	-	-	-	-	-	-	-	-	-	-	-	-	-	-	-	-	-	-	-	-
Japan	-	42.9	14.3	14.3	-	-	-	-	-	-	-	-	-	-	28.6	-	-	-	42.9	57.1	100.0
Germany	-	-	-	-	-	-	-	-	-	-	-	-	-	-	-	-	-	-	-	-	-
Canada	-	-	-	-	-	-	-	-	-	-	-	-	-	-	-	-	-	-	-	-	-
Oth.Pacific	-	-	-	-	-	-	-	-	-	-	-	-	-	-	-	-	100.0	-	100.0	-	100.0
Vanuatu	-	-	-	-	-	-	-	-	-	-	-	-	-	-	-	-	-	-	-	-	-
Hong Kong	-	-	-	-	-	-	-	-	-	-	-	-	-	-	-	-	-	-	-	-	-
Fiji	-	-	-	-	-	-	-	-	-	-	-	-	100.0	-	-	-	-	-	100.0	-	100.0
Oth.Asia	-	-	-	-	-	-	-	-	-	-	-	-	-	-	-	-	-	-	-	-	-
Netherlands	-	-	-	-	-	-	-	-	-	-	-	-	-	-	-	-	-	-	-	-	-
Oth.Europe	-	-	-	-	-	-	-	-	-	-	-	-	-	-	-	-	-	-	-	-	-
France	-	-	-	-	-	-	-	-	-	-	-	-	-	-	-	-	-	-	-	-	-
Italy	-	-	-	-	-	-	-	-	-	-	-	-	-	-	-	-	-	-	-	-	-
China	-	-	-	-	-	-	-	-	-	-	-	-	-	-	-	-	-	-	-	-	-
Oth.Country	-	-	-	-	-	-	-	-	-	-	-	-	-	-	-	-	-	-	-	-	-
Solomon Is.	21.4	10.6	7.4	3.0	0.3	0.7	1.7	0.2	0.9	3.3	1.2	0.2	1.8	-	25.3	12.9	4.9	4.1	64.9	35.1	100.0
Total	21.3	10.7	7.4	3.0	0.3	0.7	1.6	0.2	0.9	3.3	1.2	0.2	1.9	-	25.3	12.9	4.9	4.1	64.9	35.1	100.0