



**Solomon Islands Government**

**Statistical Bulletin: No: 10/2015**

**VISITOR STATISTICS**

(First Quarter 2015)

**Solomon Islands National Statistics Office**

**Ministry of Finance**

**Honiara**

## TABLE OF CONTENTS

Introduction .....	3
COMMENTARY OF RESULTS .....	5
<i>International Arrivals</i> .....	5
<i>Arrivals by Country of Residence</i> .....	5
<i>Visitor by Month</i> .....	5
<i>Tourists</i> .....	5
<i>Visitors by Purpose of Visit</i> .....	5
<i>Visitor by Age Group</i> .....	5
<i>Visitor by Occupation:</i> .....	5
<i>Visitor by Carrier</i> .....	5

### ***Charts***

---

Chart 1: Arrivals by Category, 1 <sup>st</sup> Quarter 2015 .....	6
Chart 2: Visitor Arrivals by Country of Residence by quarter: 1 <sup>st</sup> Quarter 2015.....	7
Chart 3: Visitor Arrivals by Month, 2012 to 1 <sup>st</sup> Quarter 2015.....	8
Chart 4: Tourist Arrivals by Country of Residence, 1 <sup>st</sup> Quarter 2015.....	9
Chart 5: Visitor Arrivals by Country of Residence by Purpose of Visit, 1 <sup>st</sup> Quarter 2015.....	10
Chart 6: Visitor Arrivals by Age group category by sex, 1 <sup>st</sup> Quarter 2015.....	11
Chart 7: Visitor Arrivals by Occupation by sex, 1 <sup>st</sup> Quarter 2015.....	12
Chart 8: Visitor Arrivals by Carrier by sex, 1 <sup>st</sup> Quarter 2015.....	13

### ***Tables***

Table 1: Total Arrivals Classified by Purpose of Travel by Sex by Year by Quarter: 1 <sup>st</sup> Quarter 2015 .....	6
Table 2: Visitors Arrivals by Country of Residence by Year by Quarter: 1 <sup>st</sup> Quarter 2015.....	7
Table 3: Visitors Arrivals by Month: 2006 to 1 <sup>st</sup> Quarter 2015 .....	8
Table 4: Visitors Classified as Tourists by Country of Residence by Year, Quarter and Average Length..... of Stay: 2013 to 1 <sup>st</sup> Quarter 2015 .....	9
Table 5: Visitor Arrivals by Country of Residence by Purpose of Visit by sex: 1 <sup>st</sup> Quarter 2015 .....	10
Table 6: Visitors Arrivals by Country of Residence by Age Groups by sex: 1 <sup>st</sup> Quarter 2015 .....	11
Table 7: Visitors Arrivals by Country of Residence by Occupation and Sex: 1 <sup>st</sup> Quarter 2015 .....	12
Table 8: Visitors Arrivals by Country of Residence by Carrier By Sex: 1 <sup>st</sup> Quarter 2015.....	13

Appendix 1 .....	14
<i>Concepts and Definitions</i> .....	14
Appendix 2.....	15

Table 9: Intending Resident Arrivals by Country of residence by Occupation and sex: 1 <sup>st</sup> Quarter 2015.....	15
Table 10: Intending Resident Arrivals by country of Residence by Age Groups by Sex: 1 <sup>st</sup> Quarter 2015.....	16
Table 11: Returning Resident Arrivals by country of Residence by Age Groups and sex: 1 <sup>st</sup> Quarter 2015.....	17
Table 12: Returning Resident Arrivals by country of Residence by Occupation and sex: 1 <sup>st</sup> Quarter 2015.....	18

## Introduction

This quarterly bulletin is produced by the National Statistics Office NSO in the Ministry of Finance and Treasury. It provides information on international arrivals comprised of the returning resident, intending resident, and visitor. The explanation of these categories is provided in Appendix 1 of the bulletin.

Visitor category comprised the bigger share of the bulletin, (portrayed in tables 1 to 8); compared to the returning and intending resident category portrayed in Tables 1, and 9 to 12. The bulletin includes twelve tables and eight charts stretched over cross-field tabulation, preferably to meet information need of local, regional, and international researchers.

The information captured through a self-fill Disembarkation form that was completed by all disembarking passengers. The forms were collected by Immigration officials at international check-in counters on arrival. The coverage of the bulletin is complete.

Sheer acknowledgement is owed to the Immigration Department for their continuous support of this bulletin, by providing an office space and permitting the statistics office to input completed forms. With the official arrangement in-placed between the Statistics and Immigration departments this bulletin is possible.

The inclusion of four new tables 9 to 12 in Appendix 2 of the bulletin anticipates to complete the distribution portrait of Intending and Returning resident. The distribution is by age groups, occupation and by country of usual residence.

Data limitations, highlighted in the previous bulletin still remain, though some have substantially improved but noted again for ease of reference as follows:-

- Data entry duplication by the Immigration and Statistics departments was a long standing issue. Discussion of the issues had been made by the two departments, though resolution has been recognized, this was yet to be put in place.
- Timeliness of visitor statistics has improved but the bulletin may be delayed by the production process.
- The information contained in the bulletin is based on information captured from the data source by the SINSO.
- The monetary value of the industry is not available and thus not possible in this bulletin. The concepts and definitions of the arrival categories were included in Appendix 1. The symbols that are likely to be used are:

-	zero if representing a value
-	negative change if representing a percentage change
+	positive change if representing a percentage change
p	preliminary figure, subject to revision
r	revised
e	estimate
n/a	not available

For more information contact the Statistics Office, Department of Finance and Treasury:

TELEPHONE : (677) 22154/21427

FACSMILE : (677) 23775

E-MAIL : STATS-management@mof.gov.sb

: STATS-SocialDemography@mof.gov.sb

WEBSITE : **<http://www.spc.int/prism/country/sb/stats>**

Contact persons:      1. Mrs. Irene **KALAUMA**, Chief Statistician  
                                 2. Mrs. Anterlyn **TUZAKANA**, Senior Statistician

## COMMENTARY OF RESULTS

### International Arrivals

Total Arrivals for the first quarter of 2015 was 9,423. This is a decrease of 14.3% compared to the previous quarter (4<sup>th</sup> Quarter 2014). Compared to the same quarter a year ago, it showed an increase of 1.3%.

Arrivals classified by the category for the first quarter of 2015 showed that returning resident comprise of 41%. Visitors recorded 47% and the remaining 12% was recorded for intending resident.

Visitors' arrival for the first quarter showed a decrease of 10.4% to 4,399 compared to the fourth quarter 2014 figure of 4,908. Compared to the same quarter in 2014, a decrease of 7.5% was recorded. Table 1, showed visitor and returning resident categories comprised the larger proportion of all arrivals while the intending resident represents the lesser share during the quarter. Chart 1 gives a clear picture of all the categories.

The country of China is now added to the list of country of residence. In previous reports 'China' was merged with countries of 'Other Asia'.

### Visitor by Country of Residence

Arrivals by country of residence for first quarter of the year showed that Australians (39.8%) remains the frequent travellers to Solomon Islands, followed by Other Asia (13.7%), US (7.5%), PNG (7.3%), NZ (6.4%), and Fiji (6.1%). Table 2 showed further detailed information.

### Visitor by Month

Visitors by monthly arrivals for the quarter showed that March has the highest number of arrivals with 1,675 persons. This was followed by the month of February with a recorded total of 1,465 persons and January the least with 1,259 persons.

### Tourists

Tourist<sup>1</sup> arrivals for first quarter of the year recorded a total of 1,105 persons and they spent an average of 14 days in the country. The highest number of tourists recorded for the quarter comes from Australia (43.1%) and staying in the country for an average of 14 days. This was followed by Other Asia (11.7%), US (11.4%), Other Europe (5.8%), PNG (4.4%), Japan (4.3%), and China (3.7%).

### Visitor by Purpose of Visit

Distribution of visitors by purpose of visit revealed that Business & Conference (41.3%) as most popular during the quarter. This was followed by Holiday & Vocation (22.6%), Other (19.6%), Visit friends & relatives (14.0%) and Transit & stopover the least with 2.6%.

### Visitor by Age Group

Visitor Arrivals by broad age groups showed that 78.8% of arrivals were in the 25years to 64years age range. The younger and the older age brackets represent 16.1% while the remaining 5.1% represents visitors who did not state their age. Male represent 73.9% of the arrival and female 26.1%. (Refer to Chart 6)

### Visitor by Occupation

Visitor by occupational category revealed that those who stated Other (35.5%) recorded the highest during the quarter. This was followed by Professional & Technical (30.1%), Administration and managerial (12.5%), No Work (9.1%), Service Worker (5.0%) and Production & Related Work (4.3%). Table 7 further revealed that Australia not only dominated the Arrivals in terms of markets but also dominated most of the categories of occupations during the quarter. Refer to Table 7 for further analysis.

### Visitor by Carrier

The most popular carriers during the quarter were Solomon Airlines (47.1%) followed by Virgin Australia (28.7%), Air Niu Gini (17.5%) and Fiji Airways (4.3%).

---

<sup>1</sup> Refer to Appendix 1 for the definition

Table 1: Total Arrivals Classified by Purpose of Travel by Sex, by Year by Quarter: 1<sup>st</sup> Quarter 2015

Year / Quarter	Returning Resident							Intending Resident			Visitor			Total			
	Solomon Islander			Non-Solomon Islander				All	M	F	T	M	F	T	M	F	All
	M	F	T	M	F	T											
2011 3 <sup>rd</sup>	1,716	739	2,455	642	282	924	3,379	930	275	1,205	4,523	1,721	6,244	7,811	3,017	10,828	
4 <sup>th</sup>	3,297	1,765	5,062	4	2	6	5,068	805	268	1,073	4,341	1,732	6,073	8,447	3,767	12,214	
2012 1 <sup>st</sup>	1,915	994	2,909	15	3	18	2,927	1,029	387	1,416	3,554	1,097	4,651	6,513	2,481	8,994	
2 <sup>nd</sup>	1,782	967	2,749	667	312	979	3,728	695	278	973	4,921	2,008	6,929	8,065	3,565	11,630	
3 <sup>rd</sup>	2,169	1,218	3,387	22	12	34	3,421	840	255	1,095	5,123	2,184	7,307	8,154	3,669	11,823	
4 <sup>th</sup>	3,192	1,784	4,976	5	1	6	4,982	631	215	846	3,572	1,466	5,038	7,400	3,466	10,866	
2013 1 <sup>st</sup>	1,966	1,111	3,077	6	-	6	3,083	961	338	1,299	4,034	1,284	5,318	6,967	2,733	9,700	
2 <sup>nd</sup>	2,422	1,344	3,766	1	2	3	3,769	764	279	1,043	4,531	1,664	6,195	7,718	3,289	11,007	
3 <sup>rd</sup>	2,442	1,415	3,857	5	3	8	3,865	715	228	943	5,007	1,880	6,887	8,169	3,526	11,695	
4 <sup>th</sup>	3,577	2,051	5,628	12	12	24	5,652	620	224	844	4,294	1,737	6,031	8,503	4,024	12,527	
2014 1 <sup>st</sup>	2,100	1,287	3,387	3	3	6	3,393	841	318	1,159	3,685	1,069	4,754	6,629	2,677	9,306	
2 <sup>nd</sup>	2,511	1,231	3,742	126	56	182	3,924	604	204	808	3,506	1,419	4,925	6,747	2,910	9,657	
3 <sup>rd</sup>	2,399	1,295	3,694	5	4	9	3,703	823	244	1,067	3,792	1,691	5,483	7,019	3,234	10,253	
4 <sup>th</sup>	3,290	1,937	5,227	20	5	25	5,252	692	147	839	3,481	1,427	4,908	7,483	3,516	10,999	
2015 1 <sup>st</sup>	2,356	1,530	3,886	9	6	15	3,901	843	280	1,123	3,251	1,148	4,399	6,459	2,964	9,423	
Percentage change																	
11 <sup>th</sup> -12 <sup>th</sup>	-3.2	1.1	-1.7	25.0	-50.0	-	-1.7	-21.6	-19.8	-21.2	-17.7	-15.4	-17.0	-12.4	-8.0	-11.0	
12 <sup>th</sup> -12 <sup>th</sup>	47.2	46.5	46.9	-77.3	-91.7	-82.4	45.6	-24.9	-15.7	-22.7	-30.3	-32.9	-31.1	-9.2	-5.5	-8.1	
12 <sup>th</sup> -13 <sup>th</sup>	2.7	11.8	5.8	-60.0	-100.0	-66.7	5.3	-6.6	-12.7	-8.3	13.5	17.0	14.3	7.0	10.2	7.8	
12 <sup>th</sup> -13 <sup>th</sup>	-38.4	-37.7	-38.2	20.0	-100.0	-	-38.1	52.3	57.2	53.5	12.9	-12.4	5.6	-5.9	-21.1	-10.7	
12 <sup>nd</sup> -13 <sup>nd</sup>	35.9	39.0	37.0	-99.9	-99.4	-99.7	1.1	9.9	0.4	7.2	-7.9	-17.1	-10.6	-4.3	-7.7	-5.4	
13 <sup>th</sup> -13 <sup>nd</sup>	23.2	21.0	22.4	-83.3	-	-50.0	22.3	-20.5	-17.5	-19.7	12.3	29.6	16.5	10.8	20.3	13.5	
12 <sup>th</sup> -13 <sup>th</sup>	12.6	16.2	13.9	-77.3	-75.0	-76.5	13.0	-14.9	-10.6	-13.9	-2.3	-13.9	-5.7	0.2	-3.9	-1.1	
13 <sup>th</sup> -13 <sup>th</sup>	0.8	5.3	2.4	400.0	50.0	166.7	2.5	-6.4	-18.3	-9.6	10.5	13.0	11.2	5.8	7.2	6.3	
12 <sup>th</sup> -13 <sup>th</sup>	12.1	15.0	13.1	140.0	1100.0	300.0	13.4	-1.7	4.2	-0.2	20.2	18.5	19.7	14.9	16.1	15.3	
13 <sup>th</sup> -13 <sup>th</sup>	46.5	44.9	45.9	140.0	300.0	200.0	46.2	-13.3	-1.8	-10.5	-14.2	-7.6	-12.4	4.1	14.1	7.1	
13 <sup>th</sup> -14 <sup>th</sup>	6.8	15.8	10.1	-50.0	-	0.0	10.1	-12.5	-5.9	-10.8	-8.7	-16.7	-10.6	-4.9	-2.0	-4.1	
13 <sup>th</sup> -14 <sup>th</sup>	-41.3	-37.3	-39.8	-75.0	-75.0	-75.0	-40.0	35.6	42.0	37.3	-14.2	-38.5	-21.2	-22.0	-33.5	-25.7	
13 <sup>nd</sup> -14 <sup>nd</sup>	3.7	-8.4	-0.6	12500.0	2700.0	5966.7	4.1	-20.9	-26.9	-22.5	-22.6	-14.7	-20.5	-12.6	-11.5	-12.3	
14 <sup>th</sup> -14 <sup>nd</sup>	19.6	-4.4	10.5	4100.0	1766.7	2933.3	15.6	-28.2	-35.8	-30.3	-4.9	32.7	3.6	1.8	8.7	3.8	
13 <sup>th</sup> -14 <sup>th</sup>	-1.8	-8.5	-4.2	0.0	33.3	12.5	-4.2	15.1	7.0	13.1	-24.3	-10.1	-20.4	-14.1	-8.3	-12.3	
14 <sup>th</sup> -14 <sup>th</sup>	-4.5	5.2	-1.3	-96.0	-92.9	-95.1	-5.6	36.3	19.6	32.1	8.2	19.2	11.3	4.0	11.1	6.2	
13 <sup>th</sup> -14 <sup>th</sup>	-8.0	-5.6	-7.1	66.7	-58.3	4.2	-7.1	11.6	-34.4	-0.6	-18.9	-17.8	-18.6	-12.0	-12.6	-12.2	
14 <sup>th</sup> -14 <sup>th</sup>	37.1	49.6	41.5	300.0	25.0	177.8	41.8	-15.9	-39.8	-21.4	-8.2	-15.6	-10.5	6.6	8.7	7.3	
14 <sup>th</sup> -15 <sup>th</sup>	12.2	18.9	14.7	200.0	100.0	150.0	15.0	0.2	-11.9	-3.1	-11.8	7.4	-7.5	-2.6	10.7	1.3	
14 <sup>th</sup> -15 <sup>th</sup>	-28.4	-21.0	-25.7	-55.0	20.0	-40.0	-25.7	21.8	90.5	33.8	-6.6	-19.6	-10.4	-13.7	-15.7	-14.3	

Chart 1: Arrivals by category 1<sup>st</sup> quarter 2015

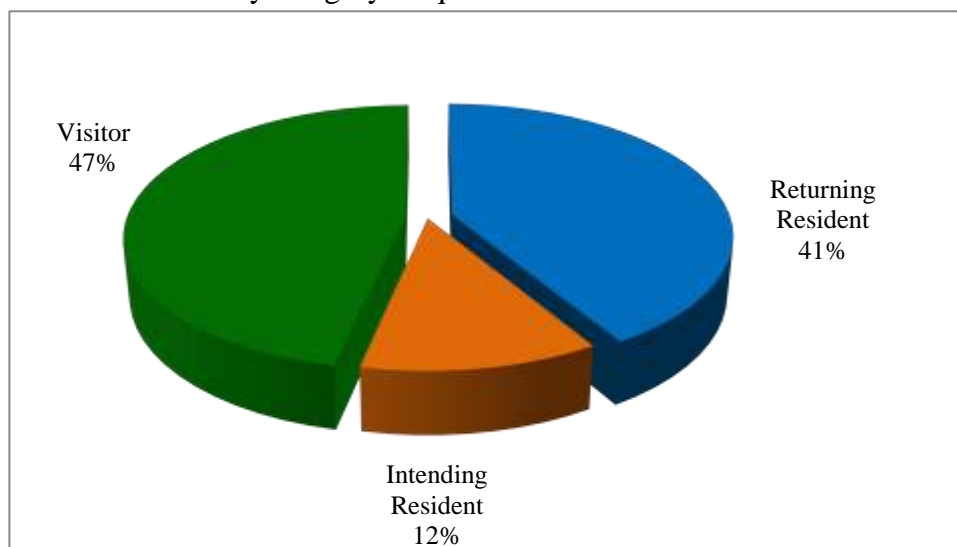


Table 2: Visitor Arrivals by Country of Residence by year by quarter: 1<sup>st</sup> Quarter 2015

Country of Usual Residence	2011	2012					2013					2014					2015
	Total	Q1	Q2	Q3	Q4	Total	Q1	Q2	Q3	Q4	Total	Q1	Q2	Q3	Q4	Total	Q1
Australia	11,392	2,238	2,963	3,404	2,474	11,079	2,282	3,049	3,001	2,849	11,181	2088	2,225	2,521	2,300	9,134	1,750
PNG	2,057	431	602	476	464	1,973	458	417	621	523	2,019	383	260	275	325	1,243	323
US	1,040	183	356	561	234	1,334	231	325	357	248	1,161	231	362	324	220	1,137	329
NZ	1,724	285	545	560	357	1,747	381	531	607	386	1,905	277	343	404	382	1,406	281
UK	380	81	84	151	69	385	104	110	152	94	460	65	99	77	96	337	69
Japan	641	162	112	211	129	614	128	116	179	178	601	137	84	172	112	505	124
Germany	111	22	40	29	26	117	33	19	35	49	136	15	30	35	22	102	25
Canada	192	29	25	30	27	111	28	35	40	45	148	38	43	42	26	149	28
Oth.Pacific	763	101	811	371	135	1,418	188	142	202	228	760	139	81	184	167	571	127
Vanuatu	513	121	148	179	147	595	250	185	191	178	804	117	171	100	141	529	109
Hong Kong	130	14	20	21	25	80	16	18	33	14	81	35	11	28	21	95	25
Fiji	1,204	300	510	444	301	1,555	451	424	528	397	1,800	351	361	273	270	1,255	268
Other Asia	2,056	500	544	577	484	2,105	623	655	743	604	2,625	689	580	658	497	2,424	603
Netherlands	64	12	11	23	11	57	10	6	24	23	63	7	18	13	11	49	11
Oth.Europe	246	76	74	121	50	321	53	57	70	107	287	119	76	130	103	428	101
France	60	24	19	36	9	88	21	21	26	25	93	21	19	33	13	86	10
Italy	80	13	12	40	28	93	16	18	16	33	83	14	10	21	30	75	21
China	-	-	-	-	-	-	-	-	-	-	-	-	103	167	155	425	164
Oth.Country	288	59	53	73	68	253	45	67	62	50	224	28	49	26	17	120	31
<b>Total</b>	<b>22,941</b>	<b>4,651</b>	<b>6,929</b>	<b>7,307</b>	<b>5,038</b>	<b>23,925</b>	<b>5,318</b>	<b>6,195</b>	<b>6,887</b>	<b>6,031</b>	<b>24,431</b>	<b>4,754</b>	<b>4,925</b>	<b>5,483</b>	<b>4,908</b>	<b>20,070</b>	<b>4,399</b>
Percentage																	
Australia	49.7	48.1	42.8	46.6	49.1	46.3	42.9	49.2	43.6	47.2	45.8	43.9	45.2	46.0	46.9	45.5	39.8
PNG	9.0	9.3	8.7	6.5	9.2	8.2	8.6	6.7	9.0	8.7	8.3	8.1	5.3	5.0	6.6	6.2	7.3
US	4.5	3.9	5.1	7.7	4.6	5.6	4.3	5.2	5.2	4.1	4.8	4.9	7.4	5.9	4.5	5.7	7.5
NZ	7.5	6.1	7.9	7.7	7.1	7.3	7.2	8.6	8.8	6.4	7.8	5.8	7.0	7.4	7.8	7.0	6.4
UK	1.7	1.7	1.2	2.1	1.4	1.6	2.0	1.8	2.2	1.6	1.9	1.4	2.0	1.4	2.0	1.7	1.6
Japan	2.8	3.5	1.6	2.9	2.6	2.6	2.4	1.9	2.6	3.0	2.5	2.9	1.7	3.1	2.3	2.5	2.8
Germany	0.5	0.5	0.6	0.4	0.5	0.5	0.6	0.3	0.5	0.8	0.6	0.3	0.6	0.6	0.4	0.5	0.6
Canada	0.8	0.6	0.4	0.4	0.5	0.5	0.5	0.6	0.6	0.7	0.6	0.8	0.9	0.8	0.5	0.7	0.6
Oth.Pacific	3.3	2.2	11.7	5.1	2.7	5.9	3.5	2.3	2.9	3.8	3.1	2.9	1.6	3.4	3.4	2.8	2.9
Vanuatu	2.2	2.6	2.1	2.4	2.9	2.5	4.7	3.0	2.8	3.0	3.3	2.5	3.5	1.8	2.9	2.6	2.5
Hong Kong	0.6	0.3	0.3	0.3	0.5	0.3	0.3	0.3	0.5	0.2	0.3	0.7	0.2	0.5	0.4	0.5	0.6
Fiji	5.2	6.5	7.4	6.1	6.0	6.5	8.5	6.8	7.7	6.6	7.4	7.4	7.3	5.0	5.5	6.3	6.1
Oth.Asia	9.0	10.8	7.9	7.9	9.6	8.8	11.7	10.6	10.8	10.0	10.7	14.5	11.8	12.0	10.1	12.1	13.7
Netherlands	0.3	0.3	0.2	0.3	0.2	0.2	0.2	0.1	0.3	0.4	0.3	0.1	0.4	0.2	0.2	0.2	0.3
Oth.Europe	1.1	1.6	1.1	1.7	1.0	1.3	1.0	0.9	1.0	1.8	1.2	2.5	1.5	2.4	2.1	2.1	2.3
France	0.3	0.5	0.3	0.5	0.2	0.4	0.4	0.3	0.4	0.4	0.4	0.4	0.4	0.6	0.3	0.4	0.2
Italy	0.3	0.3	0.2	0.5	0.6	0.4	0.3	0.3	0.2	0.5	0.3	0.3	0.2	0.4	0.6	0.4	0.5
China*	-	-	-	-	-	-	-	-	-	-	-	-	2.1	3.0	3.2	2.1	3.7
Oth.Country	1.3	1.3	0.8	1.0	1.3	1.1	0.8	1.1	0.9	0.8	0.9	0.6	1.0	0.5	0.3	0.6	0.7
<b>Total</b>	<b>100.0</b>	<b>100.0</b>	<b>100.0</b>	<b>100.0</b>	<b>100.0</b>	<b>100.0</b>	<b>100.0</b>	<b>100.0</b>	<b>100.0</b>	<b>100.0</b>	<b>100.0</b>	<b>100.0</b>	<b>100.0</b>	<b>100.0</b>	<b>100.0</b>	<b>100.0</b>	<b>100.0</b>

\*Figures for 'China' for previous quarters was included in 'Other Asia'

Chart 2: Visitors Arrival by Country of residence by quarter, 1<sup>st</sup> quarter 2015

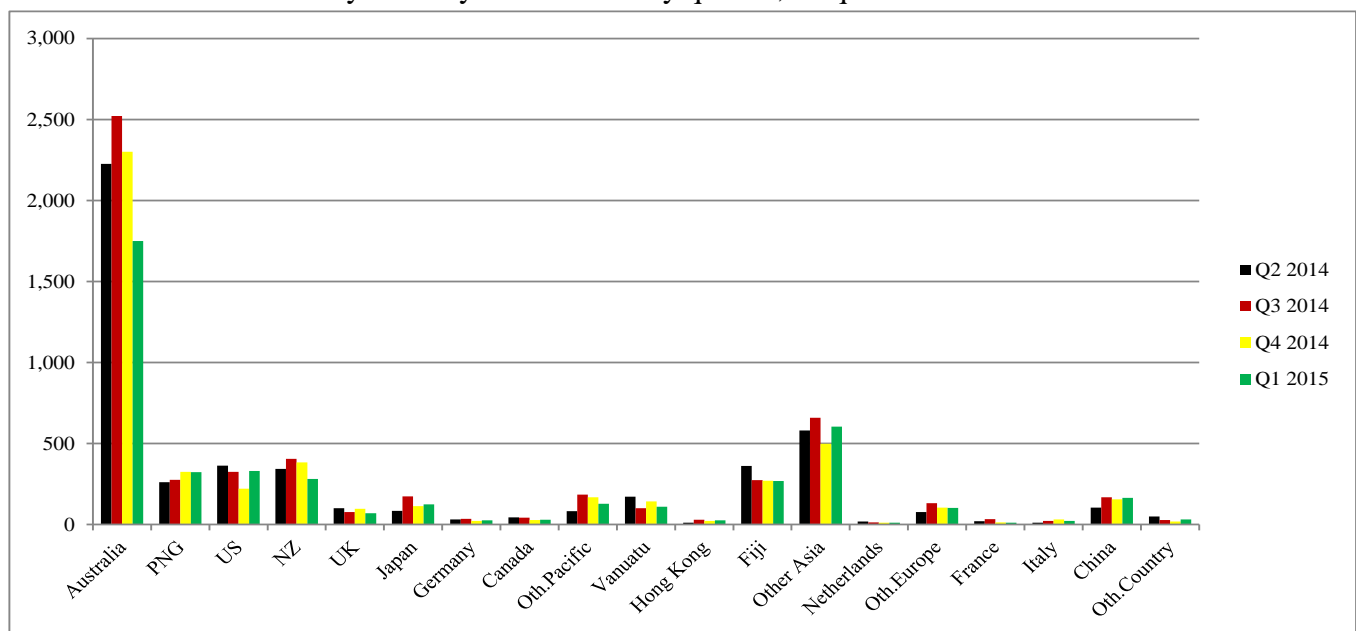


Table 3: Visitor Arrivals by Month: 2006 – 1<sup>st</sup> Quarter 2015

Month	2006	2007	2008	2009	2010	2011	2012	2013	2014	2015
January	952	546	889	1,602	1,235	1,600	1,383	1,590	1,415	1,259
February	838	1,020	1,282	1,422	1,209	1,658	1,591	1,544	1,523	1,465
March	972	1,251	802	1,249	1,766	1,861	1,677	2,184	1,816	1,675
April	994	1,452	1,388	1,499	1,820	1,736	1,839	2,021	1,514	
May	858	1,137	1,261	1,393	1,137	1,760	1,968	1,857	1,462	
June	1,289	1,265	1,552	1,724	1,797	2,009	3,122	2,317	1,949	
July	865	822	1,692	1,603	2,264	2,185	2,865	2,574	2,114	
August	892	1,299	1,469	1,520	1,845	1,900	2,133	2,022	1,639	
September	681	1,299	1,457	1,659	2,153	2,159	2,309	2,291	1,730	
October	942	1,260	1,399	1,709	1,813	1,931	1,929	2,057	1,798	
November	1,118	1,246	1,545	1,475	1,624	2,195	1,545	1,981	1,515	
December	1,081	1,151	1,528	1,405	1,858	1,947	1,564	1,993	1,595	
<b>Total</b>	<b>11,482</b>	<b>13,748</b>	<b>16,264</b>	<b>18,260</b>	<b>20,521</b>	<b>22,941</b>	<b>23,925</b>	<b>24,431</b>	<b>20,070</b>	<b>4,399</b>
Percentage										
January	8.3	4.0	5.5	8.8	5.5	7.0	5.8	6.5	7.1	28.6
February	7.3	7.4	7.9	7.8	5.4	7.2	6.6	6.3	7.6	33.3
March	8.5	9.1	4.9	6.8	7.8	8.1	7.0	8.9	9.0	38.1
April	8.7	10.6	8.5	8.2	8.1	7.6	7.7	8.3	7.5	
May	7.5	8.3	7.8	7.6	5.0	7.7	8.2	7.6	7.3	
June	11.2	9.2	9.5	9.4	8.0	8.8	13.0	9.5	9.7	
July	7.5	6.0	10.4	8.8	10.0	9.5	12.0	10.5	10.5	
August	7.8	9.4	9.0	8.3	8.2	8.3	8.9	8.3	8.2	
September	5.9	9.4	9.0	9.1	9.6	9.4	9.7	9.4	8.6	
October	8.2	9.2	8.6	9.4	8.0	8.4	8.1	8.4	9.0	
November	9.7	9.1	9.5	8.1	7.2	9.6	6.5	8.1	7.5	
December	9.4	8.4	9.4	7.7	8.2	8.5	6.5	8.2	7.9	
<b>Total</b>	<b>100</b>	<b>100.0</b>	<b>100.0</b>	<b>100.0</b>	<b>100.0</b>	<b>100.0</b>	<b>100.0</b>	<b>100.0</b>	<b>100.0</b>	<b>100.0</b>

Chart 3: Visitors Arrival by month, 2012 – 1<sup>st</sup> quarter 2015

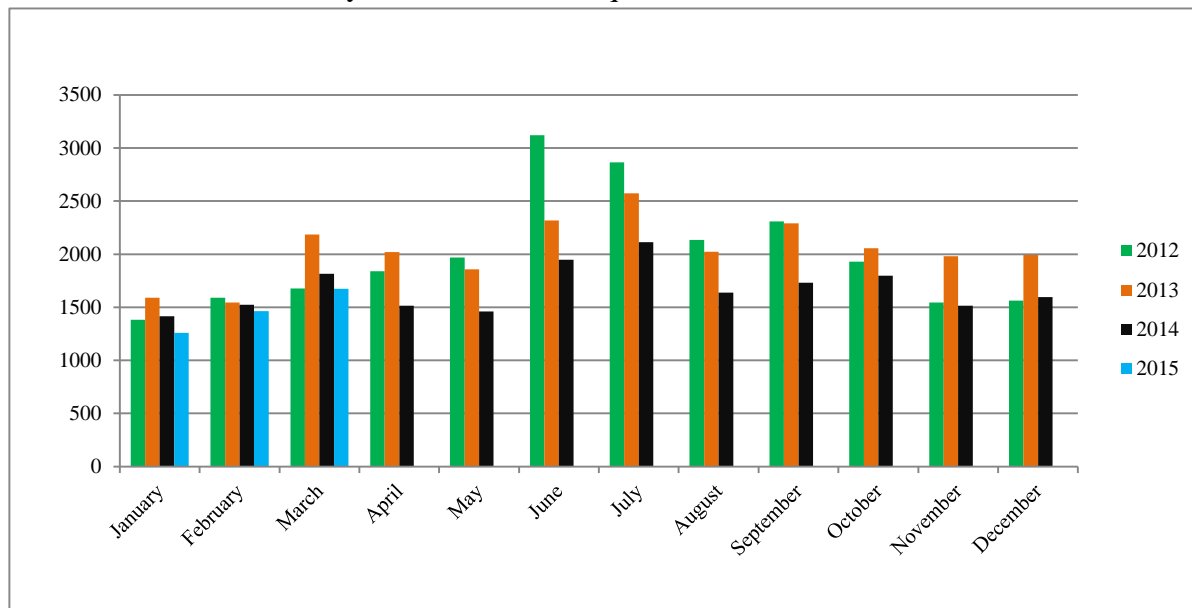




Table 4: Visitors, classified as tourists by Country of residence by year, quarter and average length of stay: 2013 – 1<sup>st</sup> Quarter 2015

Country of Usual Residence	2013								2014								2015	
	Quarter 1		Quarter 2		Quarter 3		Quarter 4		Quarter 1		Quarter 2		Quarter 3		Quarter 4		Quarter 1	
	tourist	day	tourist	day	tourist	day	tourist	day	tourist	day	tourist	day	tourist	day	tourist	day	tourist	day
Australia	507	13	981	11	943	12	914	13	484	13	745	13	890	15	782	16	476	14
PNG	43	10	39	12	43	10	105	29	42	14	50	8	42	12	95	19	49	7
US	75	11	136	12	182	13	128	14	82	13	208	10	169	13	126	12	126	7
NZ	30	15	95	15	62	18	69	22	13	13	35	10	63	17	81	18	21	8
UK	31	25	39	21	76	23	31	18	25	24	28	26	34	23	52	14	33	20
Japan	38	13	33	19	59	10	75	8	37	7	10	11	69	14	47	7	48	7
Germany	25	13	9	11	21	11	33	22	9	16	12	11	26	17	11	18	14	6
Canada	14	20	12	10	14	16	20	11	8	11	24	9	20	14	11	13	17	14
Oth.Pacific	18	10	16	15	21	15	30	10	8	9	10	8	19	14	22	25	11	11
Vanuatu	50	6	17	8	12	13	34	17	17	2	32	6	23	17	37	10	20	5
Hong Kong	6	11	8	21	8	14	3	27	10	10	1	7	9	13	4	6	7	12
Fiji	29	22	12	18	14	9	37	14	21	14	28	11	20	14	21	27	23	18
Oth.Asia	108	21	119	25	164	15	151	20	150	21	162	22	196	21	113	23	129	21
Netherlands	1	7	2	13	6	23	13	14	3	13	9	13	9	23	2	30	8	11
Oth.Europe	25	13	33	14	30	13	58	15	66	12	32	17	80	17	51	18	64	12
France	9	16	8	8	13	17	15	33	7	11	9	12	24	18	5	9	3	15
Italy	4	32	7	25	7	11	15	46	5	10	5	11	16	13	14	31	6	17
China	-	-	-	-	-	-	-	-	-	-	28	35	57	25	59	12	41	21
Oth.Country	9	14	22	7	17	12	23	21	1	20	16	13	10	13	5	18	9	30
Total	1,022	14	1,588	13	1,692	13	1,754	16	988	14	1,444	14	1,776	16	1,538	16	1,105	14

\*Figures for 'China' for previous quarters was included in 'Other Asia'

Chart 4: Tourist Arrivals by Country of Residence, 1<sup>st</sup> Quarter 2015

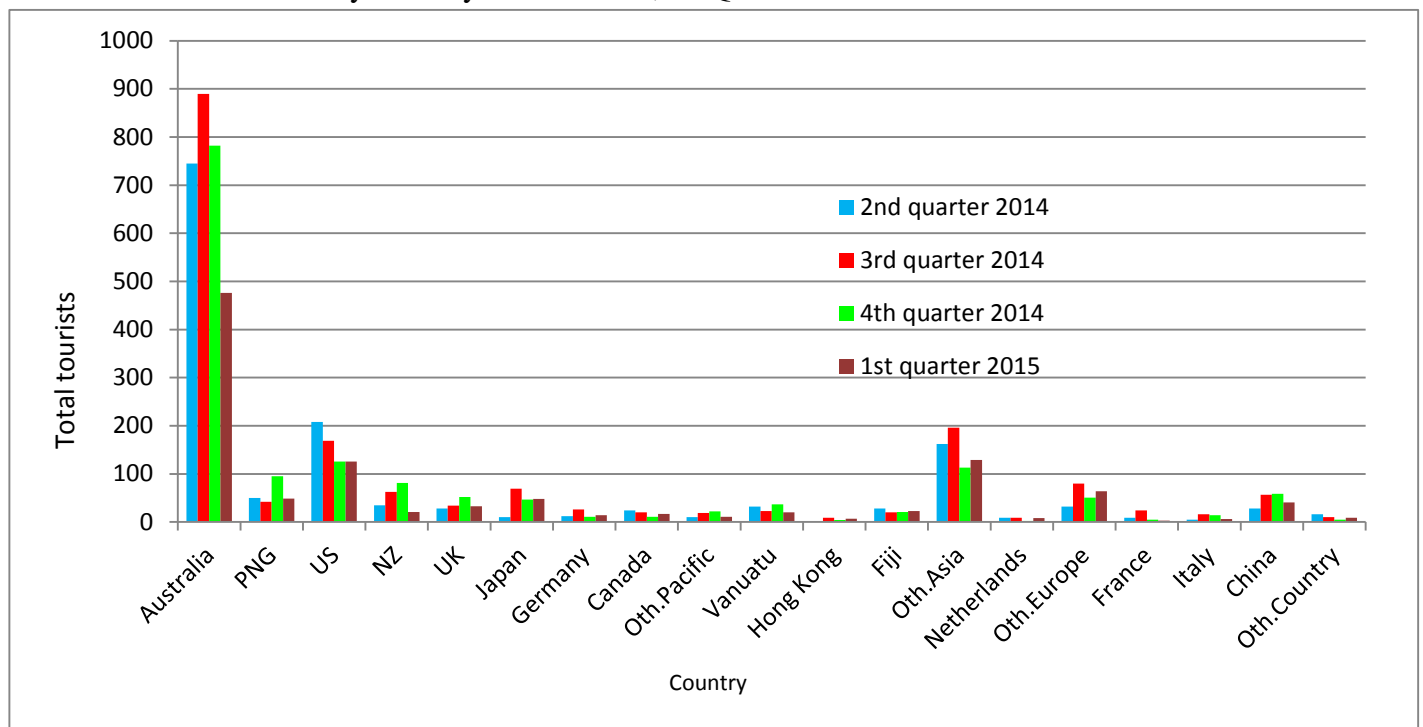


Table 5: Visitor Arrivals by Country of Residence by Purpose of Visit by sex: 1<sup>st</sup> Quarter 2015

Country of Usual Residence	Business & Conference			Holiday & Vocation			Transit & Stopover			Visit friends/Relatives			Other			Total		
	M	F	T	M	F	T	M	F	T	M	F	T	M	F	T	M	F	All
Australia	480	135	615	296	171	467	8	1	9	182	121	303	262	94	356	1,228	522	1,750
PNG	137	32	169	17	7	24	19	6	25	28	18	46	51	8	59	252	71	323
US	108	35	143	65	41	106	16	4	20	16	5	21	34	5	39	239	90	329
NZ	122	21	143	10	11	21	-	-	-	29	15	44	55	18	73	216	65	281
UK	11	6	17	18	13	31	1	1	2	4	4	8	8	3	11	42	27	69
Japan	54	11	65	35	13	48	-	-	-	2	4	6	5	-	5	96	28	124
Germany	3	-	3	11	3	14	-	-	-	2	2	4	4	-	4	20	5	25
Canada	4	1	5	8	7	15	2	-	2	3	2	5	1	-	1	18	10	28
Oth.Pacific	58	13	71	8	3	11	-	-	-	8	9	17	11	17	28	85	42	127
Vanuatu	36	10	46	7	5	12	5	3	8	3	6	9	27	7	34	78	31	109
Hong Kong	10	4	14	3	4	7	-	-	-	2	1	3	-	1	1	15	10	25
Fiji	122	41	163	11	6	17	4	2	6	23	14	37	36	9	45	196	72	268
Oth.Asia	233	27	260	80	16	96	31	2	33	50	17	67	132	15	147	526	77	603
Netherlands	1	1	2	5	1	6	2	-	2	1	-	1	-	-	-	9	2	11
Oth.Europe	18	6	24	38	21	59	4	1	5	3	1	4	5	4	9	68	33	101
France	2	1	3	1	2	3	-	-	-	-	-	-	4	-	4	7	3	10
Italy	4	1	5	4	2	6	-	-	-	1	3	4	2	4	6	11	10	21
China	47	9	56	26	14	40	1	-	1	26	8	34	20	13	33	120	44	164
Oth.Country	10	2	12	6	3	9	-	-	-	2	1	3	7	-	7	25	6	31
<b>Total</b>	<b>1460</b>	<b>356</b>	<b>1816</b>	<b>649</b>	<b>343</b>	<b>992</b>	<b>93</b>	<b>20</b>	<b>113</b>	<b>385</b>	<b>231</b>	<b>616</b>	<b>664</b>	<b>198</b>	<b>862</b>	<b>3,251</b>	<b>1,148</b>	<b>4,399</b>
<b>Percentage</b>																		
Australia	27.4	7.7	35.1	16.9	9.8	26.7	0.5	0.1	0.5	10.4	6.9	17.3	15.0	5.4	20.3	70.2	29.8	100.0
PNG	42.4	9.9	52.3	5.3	2.2	7.4	5.9	1.9	7.7	8.7	5.6	14.2	15.8	2.5	18.3	78.0	22.0	100.0
US	32.8	10.6	43.5	19.8	12.5	32.2	4.9	1.2	6.1	4.9	1.5	6.4	10.3	1.5	11.9	72.6	27.4	100.0
NZ	43.4	7.5	50.9	3.6	3.9	7.5	0.0	0.0	0.0	10.3	5.3	15.7	19.6	6.4	26.0	76.9	23.1	100.0
UK	15.9	8.7	24.6	26.1	18.8	44.9	1.4	1.4	2.9	5.8	5.8	11.6	11.6	4.3	15.9	60.9	39.1	100.0
Japan	43.5	8.9	52.4	28.2	10.5	38.7	0.0	0.0	0.0	1.6	3.2	4.8	4.0	0.0	4.0	77.4	22.6	100.0
Germany	12.0	0.0	12.0	44.0	12.0	56.0	0.0	0.0	0.0	8.0	8.0	16.0	16.0	0.0	16.0	80.0	20.0	100.0
Canada	14.3	3.6	17.9	28.6	25.0	53.6	7.1	0.0	7.1	10.7	7.1	17.9	3.6	0.0	3.6	64.3	35.7	100.0
Oth.Pacific	45.7	10.2	55.9	6.3	2.4	8.7	0.0	0.0	0.0	6.3	7.1	13.4	8.7	13.4	22.0	66.9	33.1	100.0
Vanuatu	28.3	7.9	36.2	5.5	3.9	9.4	3.9	2.4	6.3	2.4	4.7	7.1	21.3	5.5	26.8	61.4	24.4	85.8
Hong Kong	40.0	16.0	56.0	12.0	16.0	28.0	0.0	0.0	0.0	8.0	4.0	12.0	0.0	4.0	4.0	60.0	40.0	100.0
Fiji	45.5	15.3	60.8	4.1	2.2	6.3	1.5	0.7	2.2	8.6	5.2	13.8	13.4	3.4	16.8	73.1	26.9	100.0
Oth.Asia	38.6	4.5	43.1	13.3	2.7	15.9	5.1	0.3	5.5	8.3	2.8	11.1	21.9	2.5	24.4	87.2	12.8	100.0
Netherlands	9.1	9.1	18.2	45.5	9.1	54.5	18.2	0.0	18.2	9.1	0.0	9.1	0.0	0.0	0.0	81.8	18.2	100.0
Oth.Europe	17.8	5.9	23.8	37.6	20.8	58.4	4.0	1.0	5.0	3.0	1.0	4.0	5.0	4.0	8.9	67.3	32.7	100.0
France	20.0	10.0	30.0	10.0	20.0	30.0	0.0	0.0	0.0	0.0	0.0	0.0	40.0	0.0	40.0	70.0	30.0	100.0
Italy	19.0	4.8	23.8	19.0	9.5	28.6	0.0	0.0	0.0	4.8	14.3	19.0	9.5	19.0	28.6	52.4	47.6	100.0
China	28.7	5.5	34.1	15.9	8.5	24.4	0.6	0.0	0.6	15.9	4.9	20.7	12.2	7.9	20.1	73.2	26.8	100.0
Oth.Country	32.3	6.5	38.7	19.4	9.7	29.0	0.0	0.0	0.0	6.5	3.2	9.7	22.6	0.0	22.6	80.6	19.4	100.0
<b>Total</b>	<b>33.2</b>	<b>8.1</b>	<b>41.3</b>	<b>14.8</b>	<b>7.8</b>	<b>22.6</b>	<b>2.1</b>	<b>0.5</b>	<b>2.6</b>	<b>8.8</b>	<b>5.3</b>	<b>14.0</b>	<b>15.1</b>	<b>4.5</b>	<b>19.6</b>	<b>73.9</b>	<b>26.1</b>	<b>100.0</b>

Chart 5: Visitors Arrival by Country of Residence by Purpose of Visit, 1<sup>st</sup> quarter 2015

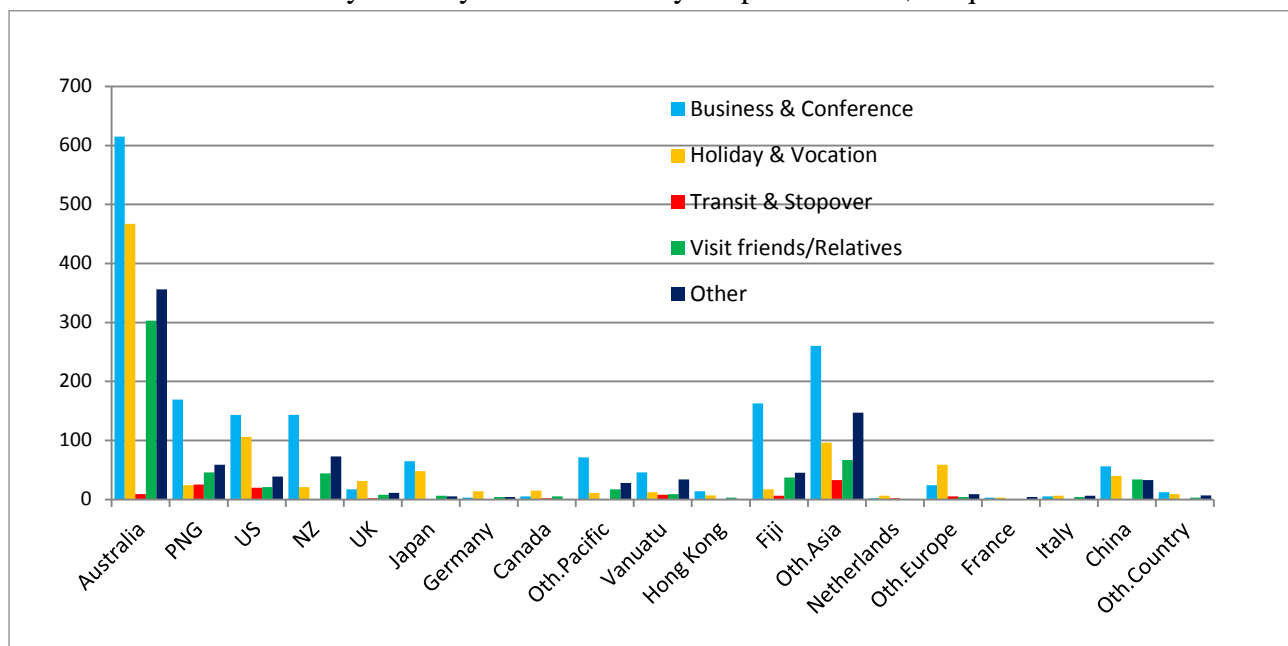


Table 6: Visitor Arrivals by Country of Residence by Age Groups by Sex: 1<sup>st</sup> Quarter 2015

Country of Usual Residence	Age-Group																		Total		
	0-14		15-24		25-34		35-44		45-54		55-64		65+		Not Stated		M	F	All		
	M	F	M	F	M	F	M	F	M	F	M	F	M	F	M	F	M	F	All		
Australia	25	21	67	54	202	105	266	104	265	102	243	76	110	24	50	36	1,228	522	1,750		
PNG	2	2	35	3	45	21	50	17	63	9	34	4	6	2	17	13	252	71	323		
US	1	-	9	2	48	12	50	18	50	19	39	17	29	19	13	3	239	90	329		
NZ	4	2	14	6	13	10	35	10	56	17	51	14	31	4	12	2	216	65	281		
UK	1	-	2	2	12	6	9	6	8	7	6	4	3	2	1	-	42	27	69		
Japan	1	-	2	3	9	9	14	8	26	1	28	2	14	4	2	1	96	28	124		
Germany	1	-	-	1	3	1	5	-	7	3	3	-	1	-	-	-	20	5	25		
Canada	-	-	1	-	4	2	4	3	1	2	5	1	1	2	2	-	18	10	28		
Oth.Pacific	-	-	3	6	23	10	22	9	19	7	13	1	2	2	3	7	85	42	127		
Vanuatu	1	2	16	2	14	7	9	5	13	7	9	3	6	3	10	2	78	31	109		
Hong Kong	-	-	-	3	2	-	2	2	7	5	2	-	2	-	-	-	15	10	25		
Fiji	-	-	15	3	53	18	45	16	45	17	25	11	5	1	8	6	196	72	268		
Oth.Asia	2	4	19	8	95	18	142	15	150	18	70	8	23	5	25	1	526	77	603		
Netherlands	-	-	-	-	1	-	3	1	3	1	1	-	-	-	1	-	9	2	11		
Oth.Europe	-	2	4	4	17	14	20	3	5	4	11	1	10	4	1	1	68	33	101		
France	-	-	1	-	-	1	1	-	4	2	1	-	-	-	-	-	7	3	10		
Italy	-	-	2	1	-	2	1	2	3	1	2	2	3	2	-	-	11	10	21		
China	2	-	14	8	34	18	29	4	23	8	16	2	-	-	2	4	120	44	164		
Oth.Country	-	-	2	1	7	-	7	1	3	2	4	2	1	-	1	-	25	6	31		
Total	40	33	206	107	582	254	714	224	751	232	563	148	247	74	148	76	3,251	1,148	4,399		
Percentage																					
Australia	1.4	1.2	3.8	3.1	11.5	6.0	15.2	5.9	15.1	5.8	13.9	4.3	6.3	1.4	2.9	2.1	70.2	29.8	100.0		
PNG	0.6	0.6	10.8	0.9	13.9	6.5	15.5	5.3	19.5	2.8	10.5	1.2	1.9	0.6	5.3	4.0	78.0	22.0	100.0		
US	0.3	0.0	2.7	0.6	14.6	3.6	15.2	5.5	15.2	5.8	11.9	5.2	8.8	5.8	4.0	0.9	72.6	27.4	100.0		
NZ	1.4	0.7	5.0	2.1	4.6	3.6	12.5	3.6	19.9	6.0	18.1	5.0	11.0	1.4	4.3	0.7	76.9	23.1	100.0		
UK	1.4	-	2.9	2.9	17.4	8.7	13.0	8.7	11.6	10.1	8.7	5.8	4.3	2.9	1.4	-	60.9	39.1	100.0		
Japan	0.8	-	1.6	2.4	7.3	7.3	11.3	6.5	21.0	0.8	22.6	1.6	11.3	3.2	1.6	0.8	77.4	22.6	100.0		
Germany	4.0	-	-	4.0	12.0	4.0	20.0	-	28.0	12.0	12.0	-	4.0	-	-	-	80.0	20.0	100.0		
Canada	-	-	3.6	-	14.3	7.1	14.3	10.7	3.6	7.1	17.9	3.6	3.6	7.1	7.1	-	64.3	35.7	100.0		
Oth.Pacific	-	-	2.4	4.7	18.1	7.9	17.3	7.1	15.0	5.5	10.2	0.8	1.6	1.6	2.4	5.5	66.9	33.1	100.0		
Vanuatu	0.9	1.8	14.7	1.8	12.8	6.4	8.3	4.6	11.9	6.4	8.3	2.8	5.5	2.8	9.2	1.8	71.6	28.4	100.0		
Hong Kong	-	-	-	12.0	8.0	0.0	8.0	8.0	28.0	20.0	8.0	-	8.0	-	-	-	60.0	40.0	100.0		
Fiji	-	-	5.6	1.1	19.8	6.7	16.8	6.0	16.8	6.3	9.3	4.1	1.9	0.4	3.0	2.2	73.1	26.9	100.0		
Oth.Asia	0.3	0.7	3.2	1.3	15.8	3.0	23.5	2.5	24.9	3.0	11.6	1.3	3.8	0.8	4.1	0.2	87.2	12.8	100.0		
Netherlands	-	-	-	-	9.1	-	27.3	9.1	27.3	9.1	9.1	-	-	-	9.1	-	81.8	18.2	100.0		
Oth.Europe	-	2.0	4.0	4.0	16.8	13.9	19.8	3.0	5.0	4.0	10.9	1.0	9.9	4.0	1.0	1.0	67.3	32.7	100.0		
France	-	-	10.0	-	-	10.0	10.0	-	40.0	20.0	10.0	-	-	-	-	-	70.0	30.0	100.0		
Italy	-	-	9.5	4.8	-	9.5	4.8	9.5	14.3	4.8	9.5	9.5	14.3	9.5	-	-	52.4	47.6	100.0		
China	1.2	-	8.5	4.9	20.7	11.0	17.7	2.4	14.0	4.9	9.8	1.2	-	-	1.2	2.4	73.2	26.8	100.0		
Oth.Country	-	-	6.5	3.2	22.6	-	22.6	3.2	9.7	6.5	12.9	6.5	3.2	-	3.2	-	80.6	19.4	100.0		
Total	0.9	0.8	4.7	2.4	13.2	5.8	16.2	5.1	17.1	5.3	12.8	3.4	5.6	1.7	3.4	1.7	73.9	26.1	100.0		

Chart 6: Visitor Arrivals by Age group category by sex, 1<sup>st</sup> quarter 2015

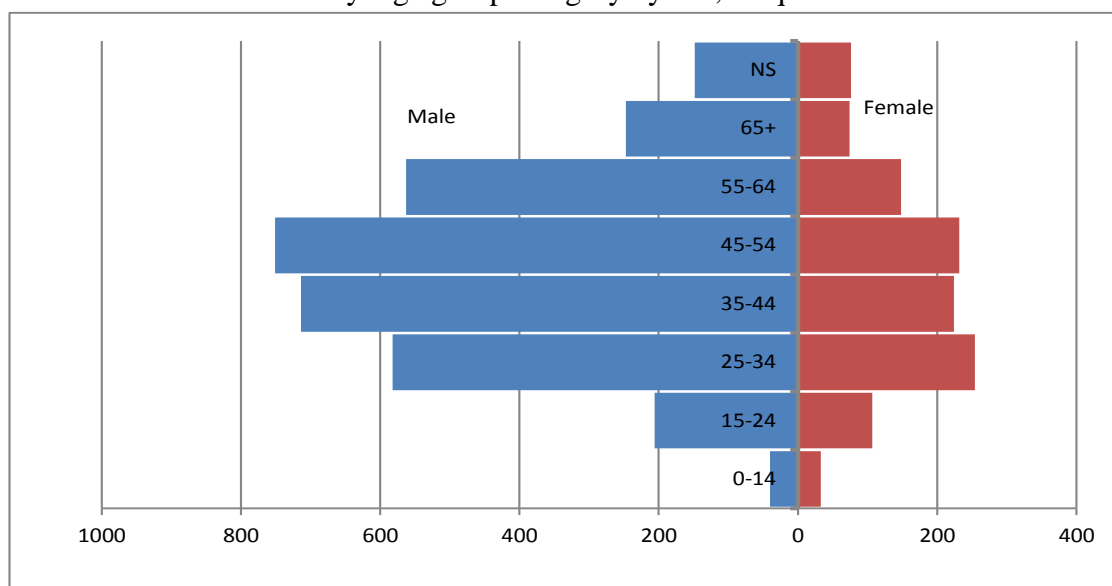


Table 7: Visitor Arrivals by Country of Residence by Occupation and Sex: 1<sup>st</sup> Quarter 2015

Country of Usual Residence	Professional and Technical		Administration and Managerial		Clerical & Related Work		Sales Worker		Service Worker		Agriculture Forestry Fishery		Production & Related Work		Other		No Work		Total		
	M	F	M	F	M	F	M	F	M	F	M	F	M	F	M	F	M	F	M	F	All
Australia	425	211	170	44	3	6	14	1	71	18	5	-	75	-	387	193	78	49	1,228	522	1,750
PNG	81	19	36	6	6	1	2	-	5	4	1	1	6	-	104	31	11	9	252	71	323
US	65	28	13	5	2	-	2	-	48	6	2	-	5	1	69	29	33	21	239	90	329
NZ	66	16	53	8	-	1	-	1	10	8	2	-	13	1	65	24	7	6	216	65	281
UK	12	8	7	5	-	1	-	-	-	-	1	-	2	-	18	10	2	3	42	27	69
Japan	37	6	6	-	2	-	1	1	2	5	1	-	-	-	37	14	10	2	96	28	124
Germany	8	3	1	1	-	1	-	-	-	-	-	-	2	-	8	-	1	-	20	5	25
Canada	3	1	2	1	-	1	-	-	1	-	-	-	1	1	7	3	4	3	18	10	28
Oth.Pacific	13	15	4	4	2	2	1	-	11	-	-	1	1	-	47	17	6	3	85	42	127
Vanuatu	31	10	4	1	-	-	-	-	4	5	-	1	5	-	26	13	8	1	78	31	109
Hong Kong	-	2	7	1	-	-	1	-	-	-	-	-	-	-	5	3	2	4	15	10	25
Fiji	81	22	27	9	3	1	3	-	2	6	2	-	8	-	65	25	5	9	196	72	268
Oth.Asia	54	21	71	9	8	1	47	-	6	8	13	-	61	1	207	25	59	12	526	77	603
Netherlands	4	-	1	-	-	-	-	-	-	-	-	-	-	-	4	2	-	-	9	2	11
Oth.Europe	26	8	10	2	-	3	1	-	-	-	-	-	-	-	24	11	7	9	68	33	101
France	1	-	1	-	-	-	-	-	-	-	-	-	-	-	5	2	-	1	7	3	10
Italy	2	5	-	-	-	-	-	-	-	-	-	-	-	-	5	4	4	1	11	10	21
China	13	10	35	4	-	-	6	1	-	1	1	2	4	-	43	20	18	6	120	44	164
Oth.Country	13	2	1	-	1	-	-	-	-	1	-	-	-	-	6	2	4	1	25	6	31
Total	935	387	449	100	27	18	78	4	160	62	28	5	183	4	1,132	428	259	140	3,251	1,148	4,399
<b>Percentage</b>																					
Australia	24.3	12.1	9.7	2.5	0.2	0.3	0.8	0.1	4.1	1.0	0.3	-	4.3	-	22.1	11.0	4.5	2.8	70.2	29.8	100.0
PNG	25.1	5.9	11.1	1.9	1.9	0.3	0.6	-	1.5	1.2	0.3	0.3	1.9	-	32.2	9.6	3.4	2.8	78.0	22.0	100.0
US	19.8	8.5	4.0	1.5	0.6	-	0.6	-	14.6	1.8	0.6	-	1.5	0.3	21.0	8.8	10.0	6.4	72.6	27.4	100.0
NZ	23.5	5.7	18.9	2.8	-	0.4	-	0.4	3.6	2.8	0.7	-	4.6	0.4	23.1	8.5	2.5	2.1	76.9	23.1	100.0
UK	17.4	11.6	10.1	7.2	-	1.4	-	-	-	-	1.4	-	2.9	-	26.1	14.5	2.9	4.3	60.9	39.1	100.0
Japan	29.8	4.8	4.8	-	1.6	-	0.8	0.8	1.6	4.0	0.8	-	-	-	29.8	11.3	8.1	1.6	77.4	22.6	100.0
Germany	32.0	12.0	4.0	4.0	-	4.0	-	-	-	-	-	-	8.0	-	32.0	-	4.0	-	80.0	20.0	100.0
Canada	10.7	3.6	7.1	3.6	-	3.6	-	-	3.6	-	-	-	3.6	3.6	25.0	10.7	14.3	10.7	64.3	35.7	100.0
Oth.Pacific	10.2	11.8	3.1	3.1	1.6	1.6	0.8	-	8.7	-	-	0.8	0.8	-	37.0	13.4	4.7	2.4	66.9	33.1	100.0
Vanuatu	28.4	9.2	3.7	0.9	-	-	-	-	3.7	4.6	-	0.9	4.6	-	23.9	11.9	7.3	0.9	71.6	28.4	100.0
Hong Kong	-	8.0	28.0	4.0	-	-	4.0	-	-	-	-	-	-	-	20.0	12.0	8.0	16.0	60.0	40.0	100.0
Fiji	30.2	8.2	10.1	3.4	1.1	0.4	1.1	-	0.7	2.2	0.7	-	3.0	-	24.3	9.3	1.9	3.4	73.1	26.9	100.0
Oth.Asia	9.0	3.5	11.8	1.5	1.3	0.2	7.8	-	1.0	1.3	2.2	-	10.1	0.2	34.3	4.1	9.8	2.0	87.2	12.8	100.0
Netherlands	36.4	-	9.1	-	-	-	-	-	-	-	-	-	-	-	36.4	18.2	-	-	81.8	18.2	100.0
Oth.Europe	25.7	7.9	9.9	2.0	-	3.0	1.0	-	-	-	-	-	-	-	23.8	10.9	6.9	8.9	67.3	32.7	100.0
France	10.0	-	10.0	-	-	-	-	-	-	-	-	-	-	-	50.0	20.0	-	10.0	70.0	30.0	100.0
Italy	9.5	23.8	-	-	-	-	-	-	-	-	-	-	-	-	23.8	19.0	19.0	4.8	52.4	47.6	100.0
China	7.9	6.1	21.3	2.4	-	-	3.7	0.6	-	0.6	1.2	2.4	-	-	26.2	12.2	11.0	3.7	73.2	26.8	100.0
Oth.Country	41.9	6.5	3.2	-	3.2	-	-	-	-	3.2	-	-	-	-	19.4	6.5	12.9	3.2	80.6	19.4	100.0
Total	21.3	8.8	10.2	2.3	0.6	0.4	1.8	0.1	3.6	1.4	0.6	0.1	4.2	0.1	25.7	9.7	5.9	3.2	73.9	26.1	100.0

Chart 7: Visitors Arrival by occupation by sex, 1<sup>st</sup> quarter 2015

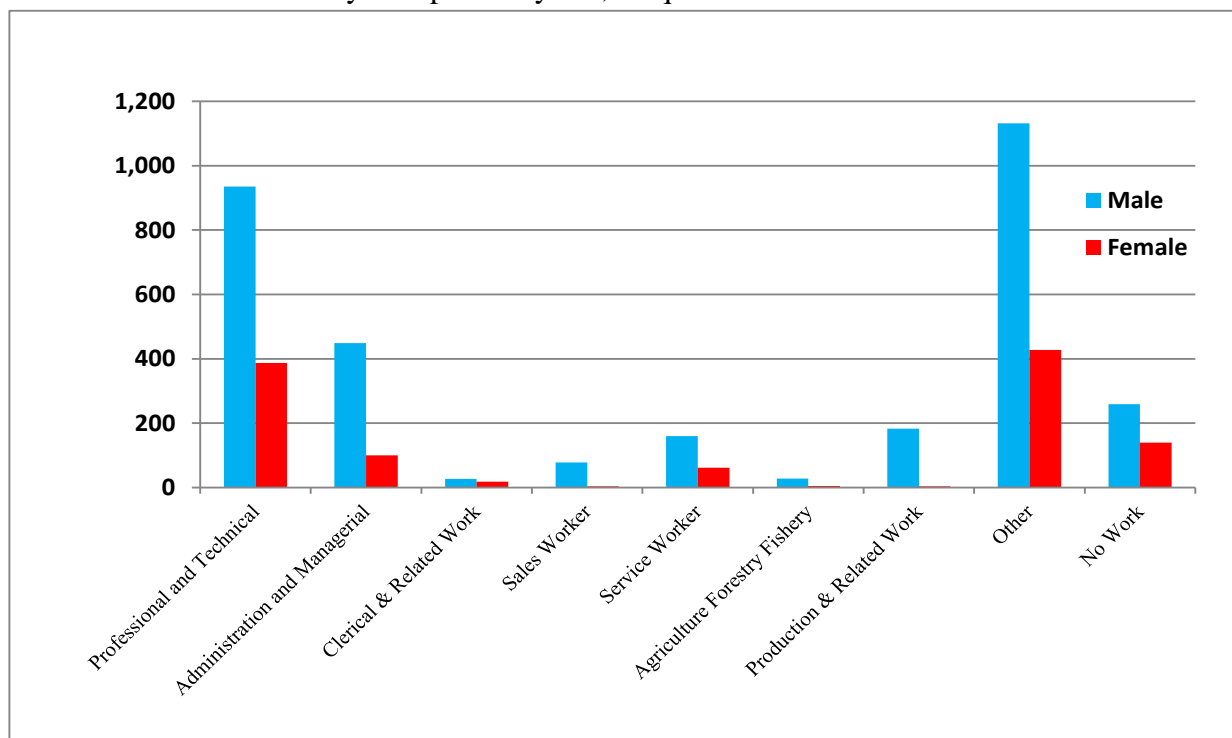


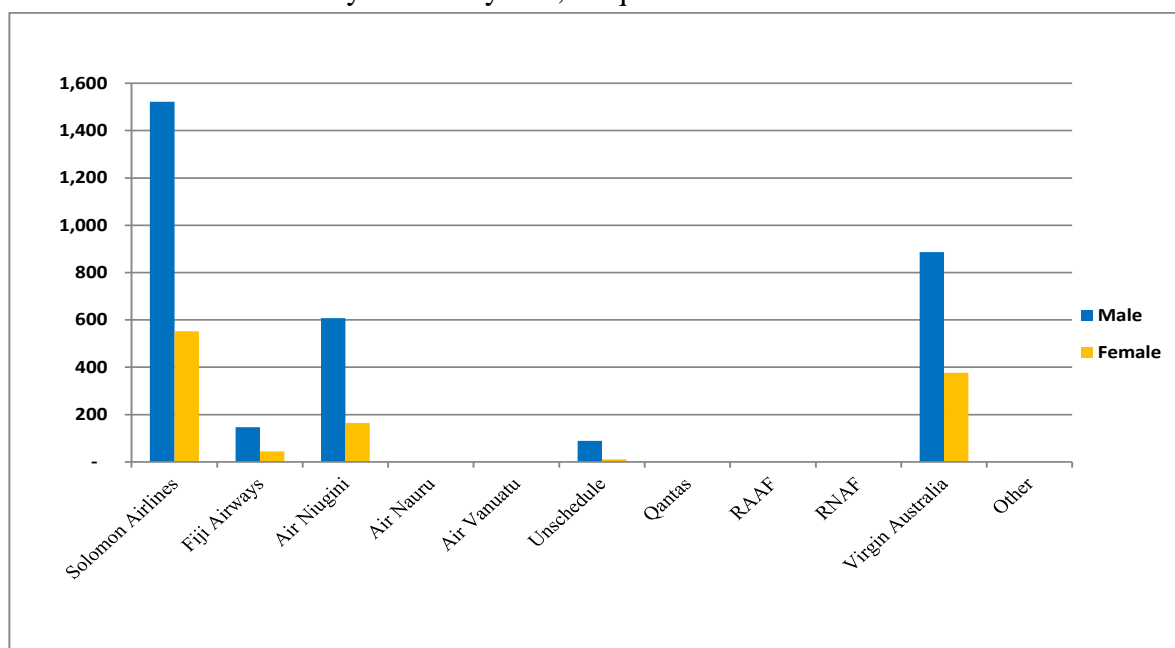
Table 8: Visitor Arrivals by Country of residence by Carrier by Sex: 1<sup>st</sup> Quarter 2015

Country of Usual Residence	Solomon Airlines		Fiji Airways		Air Niugini		Air Nauru		Air Vanuatu		Unschedule		Qantas		RAAF		RCAF		Virgin Australia		Total		
	M	F	M	F	M	F	M	F	M	F	M	F	M	F	M	F	M	F	M	F	M	F	All
	Australia	665	272	5	-	31	7	-	-	-	-	15	-	-	-	-	-	-	-	512	243	1,228	522
PNG	21	8	7	1	207	61	-	-	-	-	3	1	-	-	-	-	-	-	14	-	252	71	323
US	91	42	20	6	22	6	-	-	-	-	50	7	-	-	-	-	-	-	56	29	239	90	329
NZ	90	27	3	4	9	-	-	-	-	-	-	-	-	-	-	-	-	-	114	34	216	65	281
UK	24	15	3	3	7	4	-	-	-	-	-	-	-	-	-	-	-	-	8	5	42	27	69
Japan	36	10	4	3	49	9	-	-	-	-	-	-	-	-	-	-	-	-	7	6	96	28	124
Germany	12	4	2	1	1	-	-	-	-	-	-	-	-	-	-	-	-	-	5	-	20	5	25
Canada	11	7	1	-	1	-	-	-	-	-	1	-	-	-	-	-	-	-	4	3	18	10	28
Oth.Pacific	63	33	4	4	8	2	-	-	-	-	1	-	-	-	-	-	-	-	9	3	85	42	127
Vanuatu	51	22	24	4	2	4	-	-	-	-	-	-	-	-	-	-	-	-	1	1	78	31	109
Hong Kong	6	5	1	-	4	2	-	-	-	-	-	-	-	-	-	-	-	-	4	3	15	10	25
Fiji	98	36	50	14	34	17	-	-	-	-	5	1	-	-	-	-	-	-	9	4	196	72	268
Oth.Asia	274	32	6	-	128	18	-	-	-	-	12	2	-	-	-	-	-	-	106	25	526	77	603
Netherlands	3	2	2	-	1	-	-	-	-	-	-	-	-	-	-	-	-	-	3	-	9	2	11
Oth.Europe	43	20	1	-	13	2	-	-	-	-	-	-	-	-	-	-	-	-	11	11	68	33	101
France	7	2	-	-	-	-	-	-	-	-	-	-	-	-	-	-	-	-	-	1	7	3	10
Italy	6	8	1	-	1	1	-	-	-	-	1	-	-	-	-	-	-	-	2	1	11	10	21
China	11	6	12	4	79	29	-	-	-	-	1	-	-	-	-	-	-	-	17	5	120	44	164
Oth.Country	10	1	-	-	10	3	-	-	-	-	-	-	-	-	-	-	-	-	5	2	25	6	31
Total	1,522	552	146	44	607	165	-	-	-	-	89	11	-	-	-	-	-	-	887	376	3,251	1,148	4,399

	Percentage																							
Australia	38.0	15.5	0.3	-	1.8	0.4	-	-	-	-	0.9	-	-	-	-	-	-	-	29.3	13.9	70.2	29.8	100.0	
PNG	6.5	2.5	2.2	0.3	64.1	18.9	-	-	-	-	0.9	0.3	-	-	-	-	-	-	4.3	-	78.0	22.0	100.0	
US	27.7	12.8	6.1	1.8	6.7	1.8	-	-	-	-	15.2	2.1	-	-	-	-	-	-	17.0	8.8	72.6	27.4	100.0	
NZ	32.0	9.6	1.1	1.4	3.2	-	-	-	-	-	-	-	-	-	-	-	-	-	40.6	12.1	76.9	23.1	100.0	
UK	34.8	21.7	4.3	4.3	10.1	5.8	-	-	-	-	-	-	-	-	-	-	-	-	11.6	7.2	60.9	39.1	100.0	
Japan	29.0	8.1	3.2	2.4	39.5	7.3	-	-	-	-	-	-	-	-	-	-	-	-	5.6	4.8	77.4	22.6	100.0	
Germany	48.0	16.0	8.0	4.0	4.0	-	-	-	-	-	-	-	-	-	-	-	-	-	20.0	-	80.0	20.0	100.0	
Canada	39.3	25.0	3.6	-	3.6	-	-	-	-	-	3.6	-	-	-	-	-	-	-	14.3	10.7	64.3	35.7	100.0	
Oth.Pacific	49.6	26.0	3.1	3.1	6.3	1.6	-	-	-	-	0.8	-	-	-	-	-	-	-	7.1	2.4	66.9	33.1	100.0	
Vanuatu	46.8	20.2	22.0	3.7	1.8	3.7	-	-	-	-	-	-	-	-	-	-	-	-	0.9	0.9	71.6	28.4	100.0	
Hong Kong	24.0	20.0	4.0	-	16.0	8.0	-	-	-	-	-	-	-	-	-	-	-	-	16.0	12.0	60.0	40.0	100.0	
Fiji	36.6	13.4	18.7	5.2	12.7	6.3	-	-	-	-	1.9	0.4	-	-	-	-	-	-	3.4	1.5	73.1	26.9	100.0	
Oth.Asia	45.4	5.3	1.0	-	21.2	3.0	-	-	-	-	2.0	0.3	-	-	-	-	-	-	17.6	4.1	87.2	12.8	100.0	
Netherlands	27.3	18.2	18.2	-	9.1	-	-	-	-	-	-	-	-	-	-	-	-	-	27.3	-	81.8	18.2	100.0	
Oth.Europe	42.6	19.8	1.0	-	12.9	2.0	-	-	-	-	-	-	-	-	-	-	-	-	10.9	10.9	67.3	32.7	100.0	
France	70.0	20.0	-	-	-	-	-	-	-	-	-	-	-	-	-	-	-	-	-	10.0	70.0	30.0	100.0	
Italy	28.6	38.1	4.8	-	4.8	4.8	-	-	-	-	4.8	-	-	-	-	-	-	-	9.5	4.8	52.4	47.6	100.0	
China	6.7	3.7	7.3	2.4	48.2	17.7	-	-	-	-	0.6	-	-	-	-	-	-	-	10.4	3.0	73.2	26.8	100.0	
Oth.Country	32.3	3.2	-	-	32.3	9.7	-	-	-	-	-	-	-	-	-	-	-	-	16.1	6.5	80.6	19.4	100.0	
Total	34.6	12.5	3.3	1.0	13.8	3.8	-	-	-	-	2.0	0.3	-	-	-	-	-	-	20.2	8.5	73.9	26.1	100.0	

Chart 8: Visitor Arrivals by Carrier by Sex, 1<sup>st</sup> quarter 2015



## Appendix 1

### Concepts and Definitions

Persons entering Solomon Islands classify themselves into three (3) categories; returning resident, intending resident, and visitor. The concepts and definitions of the various categories are as follows:

#### (i) *Returning residents*

- Solomon Islanders and non-Solomon Islanders who have left the country and are returning to continue their residence.
- Non Solomon Islanders includes resident permit holders and Diplomatic officials, and their immediate family members. This may also includes legal or official arrangements that fall out side of the above.

#### (ii) *Intending residents*

- Non-Solomon Islander who wish to take up residence in Solomon Islands.

#### (iii) *Visitors*

- Any traveller who is not a Solomon Islander and who purposely spend less time – at most a period of 120 days<sup>2</sup>, in the country and with the intention and purpose of visiting.
- *Tourist*
  - Visitors who further classify themselves stating their visit are purposely for '*holiday and vacation*'. This exclude, tourist arrivals by cruise ships.
  - Wife accompanying husband on business purpose is a private tourist unless also working.
  - *World Tourism Organization WTO definition of Tourism:*  
*It comprises the activities of persons travelling to and staying in places outside their usual environment for not more than one consecutive year for leisure, business and other purposes not related to the exercise of an activity remunerated from within the place visited*<sup>3</sup>.

#### ( iv) *Markets*

- *Country of Usual Residence*

---

<sup>2</sup> Solomon Islands 1993 Statistical Yearbook.

<sup>3</sup> Dimensions of Hospitality, Study guide 1. p17

Appendix 2

Table 9: Intending Resident Arrivals by Country of Residence by Occupation and Sex: 1<sup>st</sup> Quarter 2015

Country of Usual Residence	Professional and Technical		Administration and Managerial		Clerical & Related Work		Sales Worker		Service Worker		Agriculture Forestry Fishery		Production & Related Work		Other		No Work		Total		
	M	F	M	F	M	F	M	F	M	F	M	F	M	F	M	F	M	F	M	F	All
Australia	9	9	5	2	1	-	-	-	17	6	-	-	1	-	22	19	5	4	60	40	100
PNG	6	-	5	-	-	-	-	-	1	1	-	-	-	-	1	1	1	-	14	2	16
US	2	-	-	-	-	-	-	-	-	-	-	-	-	-	1	1	1	1	4	2	6
NZ	3	2	3	-	-	1	-	-	3	4	-	-	-	-	3	2	1	1	13	10	23
UK	-	-	3	-	-	-	-	-	-	-	-	-	-	-	2	-	-	-	5	-	5
Japan	-	-	-	-	-	-	-	-	-	-	-	-	-	-	7	1	-	-	7	1	8
Germany	-	-	-	-	-	-	-	-	-	-	-	-	-	-	-	1	-	-	-	1	1
Canada	1	-	-	-	-	-	-	-	-	-	-	-	-	-	-	1	-	-	1	1	2
Oth.Pacific	3	-	-	-	-	-	-	-	16	1	-	-	-	-	2	-	-	1	21	2	23
Vanuatu	-	-	-	-	-	-	-	-	1	-	-	-	-	-	-	-	-	-	1	-	1
Hong Kong	-	-	-	-	-	-	-	-	-	-	-	-	-	-	-	-	-	-	-	-	-
Fiji	-	-	2	2	-	-	-	-	1	-	-	1	-	1	5	1	2	-	10	5	15
Oth.Asia	20	7	49	8	2	2	13	-	10	4	19	-	63	2	167	11	87	9	430	43	473
Netherlands	-	-	1	-	-	-	-	-	-	-	-	-	-	-	-	1	-	-	1	1	2
Oth.Europe	2	1	-	-	-	-	-	-	-	-	-	-	-	-	2	2	2	1	6	4	10
France	-	-	-	-	-	-	-	-	-	-	-	-	-	-	-	-	-	-	-	-	-
Italy	-	-	-	-	-	-	-	-	-	-	-	-	-	-	-	-	-	-	-	-	-
China	8	4	23	2	-	1	10	2	3	1	1	-	-	-	28	7	43	16	116	33	149
Oth.Country	-	-	-	-	-	-	-	-	-	1	-	-	-	-	-	-	1	1	1	2	3
Total	54	23	91	14	3	4	23	2	52	18	20	1	64	3	241	48	144	34	692	147	839
<u>Percentage</u>																					
Australia	9.0	9.0	5.0	2.0	1.0	-	-	-	17.0	6.0	-	-	1.0	-	22.0	19.0	5.0	4.0	60.0	40.0	100.0
PNG	37.5	-	31.3	-	-	-	-	-	6.3	6.3	-	-	-	-	6.3	6.3	6.3	0.0	87.5	12.5	100.0
US	33.3	-	-	-	-	-	-	-	-	0.0	-	-	-	-	16.7	16.7	16.7	16.7	66.7	33.3	100.0
NZ	13.0	8.7	13.0	-	-	4.3	-	-	13.0	17.4	-	-	-	-	13.0	8.7	4.3	4.3	56.5	43.5	100.0
UK	-	-	60.0	-	-	-	-	-	-	-	-	-	-	-	40.0	-	-	-	100.0	-	100.0
Japan	-	-	-	-	-	-	-	-	-	-	-	-	-	-	87.5	12.5	-	-	87.5	12.5	100.0
Germany	-	-	-	-	-	-	-	-	-	-	-	-	-	-	-	100.0	-	-	-	100.0	100.0
Canada	50.0	-	-	-	-	-	-	-	-	-	-	-	-	-	-	50.0	-	-	50.0	50.0	100.0
Oth.Pacific	13.0	-	-	-	-	-	-	-	69.6	4.3	-	-	-	-	8.7	-	-	4.3	91.3	8.7	100.0
Vanuatu	-	-	-	-	-	-	-	-	100.0	-	-	-	-	-	-	-	-	-	100.0	-	100.0
Hong Kong	-	-	-	-	-	-	-	-	-	-	-	-	-	-	-	-	-	-	-	-	-
Fiji	-	-	13.3	13.3	-	-	-	-	6.7	-	-	6.7	-	6.7	33.3	6.7	13.3	-	66.7	33.3	100.0
Oth.Asia	4.2	1.5	10.4	1.7	0.4	0.4	2.7	-	2.1	0.8	4.0	-	13.3	0.4	35.3	2.3	18.4	1.9	90.9	9.1	100.0
Netherlands	-	-	50.0	-	-	-	-	-	-	-	-	-	-	-	-	50.0	-	-	50.0	50.0	100.0
Oth.Europe	20.0	10.0	-	-	-	-	-	-	-	-	-	-	-	-	20.0	20.0	20.0	10.0	60.0	40.0	100.0
France	-	-	-	-	-	-	-	-	-	-	-	-	-	-	-	-	-	-	-	-	-
Italy	-	-	-	-	-	-	-	-	-	-	-	-	-	-	-	-	-	-	-	-	-
China	5.4	2.7	15.4	1.3	-	0.7	6.7	1.3	2.0	0.7	0.7	-	-	-	18.8	4.7	28.9	10.7	77.9	22.1	100.0
Oth.Country	-	-	-	-	-	-	-	-	-	33.3	-	-	-	-	-	-	33.3	33.3	33.3	66.7	100.0
Total	6.4	2.7	10.8	1.7	0.4	0.5	2.7	0.2	6.2	2.1	2.4	0.1	7.6	0.4	28.7	5.7	17.2	4.1	82.5	17.5	100.0

Table 10: Intending Resident Arrivals by Country of Residence by Age Groups by Sex: 1<sup>st</sup> Quarter 2015

Country of Usual Residence	Age-Group																		Total		
	0-14		15-24		25-34		35-44		45-54		55-64		65+		Not Stated		M	F	All		
	M	F	M	F	M	F	M	F	M	F	M	F	M	F	M	F	M	F	All		
Australia	-	-	-	-	10	12	12	11	21	8	9	6	1	1	7	2	60	40	100		
PNG	-	-	1	-	1	-	8	1	1	-	1	-	1	1	1	-	14	2	16		
US	-	-	1	-	-	-	1	-	1	-	-	-	1	2	-	-	4	2	6		
NZ	-	1	-	-	1	4	2	3	3	1	4	-	2	1	1	-	13	10	23		
UK	-	-	-	-	-	-	-	-	4	-	-	-	1	-	-	-	5	0	5		
Japan	-	-	-	-	7	-	-	1	-	-	-	-	-	-	-	-	7	1	8		
Germany	-	-	-	-	-	-	-	-	-	1	-	-	-	-	-	-	0	1	1		
Canada	-	-	-	-	-	1	-	-	1	-	-	-	-	-	-	-	1	1	2		
Oth.Pacific	-	-	1	-	9	-	8	1	3	-	-	-	-	1	-	-	21	2	23		
Vanuatu	-	-	-	-	-	-	1	-	-	-	-	-	-	-	-	-	1	0	1		
Hong Kong	-	-	-	-	-	-	-	-	-	-	-	-	-	-	-	-	0	0	-		
Fiji	-	-	-	-	2	2	2	-	1	1	3	-	-	-	2	2	10	5	15		
Oth.Asia	4	1	18	3	95	8	145	15	102	8	37	3	5	-	24	5	430	43	473		
Netherlands	-	-	-	-	-	-	1	-	-	1	-	-	-	-	-	-	1	1	2		
Oth.Europe	-	-	2	-	1	2	1	-	-	-	1	1	-	1	1	-	6	4	10		
France	-	-	-	-	-	-	-	-	-	-	-	-	-	-	-	-	0	0	-		
Italy	-	-	-	-	-	-	-	-	-	-	1	-	1	-	-	-	2	0	2		
China	-	1	21	4	37	20	29	2	10	1	6	-	-	1	13	4	116	33	149		
Oth.Country	-	-	-	-	-	1	1	1	-	-	-	-	-	-	-	-	1	2	3		
<b>Total</b>	<b>4</b>	<b>3</b>	<b>44</b>	<b>7</b>	<b>163</b>	<b>50</b>	<b>211</b>	<b>35</b>	<b>147</b>	<b>21</b>	<b>62</b>	<b>10</b>	<b>12</b>	<b>8</b>	<b>49</b>	<b>13</b>	<b>692</b>	<b>147</b>	<b>839</b>		
	<b>Percentage</b>																				
Australia	-	-	-	-	10.0	12.0	12.0	11.0	21.0	8.0	9.0	6.0	1.0	1.0	7.0	2.0	60.0	40.0	100.0		
PNG	-	-	6.3	-	6.3	-	50.0	6.3	6.3	-	6.3	-	6.3	6.3	6.3	-	87.5	12.5	100.0		
US	-	-	16.7	-	-	-	16.7	-	16.7	-	-	-	16.7	33.3	-	-	66.7	33.3	100.0		
NZ	-	4.3	-	-	4.3	17.4	8.7	13.0	13.0	4.3	17.4	-	8.7	4.3	4.3	-	56.5	43.5	100.0		
UK	-	-	-	-	-	-	-	-	80.0	-	-	-	20.0	-	-	-	100.0	-	100.0		
Japan	-	-	-	-	87.5	-	-	12.5	-	-	-	-	-	-	-	-	87.5	12.5	100.0		
Germany	-	-	-	-	-	-	-	-	-	100.0	-	-	-	-	-	-	-	100.0	100.0		
Canada	-	-	-	-	-	50.0	-	-	50.0	-	-	-	-	-	-	-	50.0	50.0	100.0		
Oth.Pacific	-	-	4.3	-	39.1	-	34.8	4.3	13.0	-	-	-	-	4.3	-	-	91.3	8.7	100.0		
Vanuatu	-	-	-	-	-	-	100.0	-	-	-	-	-	-	-	-	-	100.0	-	100.0		
Hong Kong	-	-	-	-	-	-	-	-	-	-	-	-	-	-	-	-	-	-	-		
Fiji	-	-	-	-	13.3	13.3	13.3	-	6.7	6.7	20.0	-	-	-	13.3	13.3	66.7	33.3	100.0		
Oth.Asia	0.8	0.2	3.8	0.6	20.1	1.7	30.7	3.2	21.6	1.7	7.8	0.6	1.1	-	5.1	1.1	90.9	9.1	100.0		
Netherlands	-	-	-	-	-	-	50.0	-	-	50.0	-	-	-	-	-	-	50.0	50.0	100.0		
Oth.Europe	-	-	20.0	-	10.0	20.0	10.0	-	-	-	10.0	10.0	-	10.0	10.0	-	60.0	40.0	100.0		
France	-	-	-	-	-	-	-	-	-	-	-	-	-	-	-	-	-	-	-		
Italy	-	-	-	-	-	-	-	-	-	-	50.0	-	50.0	-	-	0.0	100.0	-	100.0		
China	-	0.7	14.1	2.7	24.8	13.4	19.5	1.3	6.7	0.7	4.0	-	-	0.7	8.7	2.7	77.9	22.1	100.0		
Oth.Country	-	-	-	-	-	33.3	33.3	33.3	-	-	-	-	-	-	-	-	33.3	66.7	100.0		
<b>Total</b>	<b>0.5</b>	<b>0.4</b>	<b>5.2</b>	<b>0.8</b>	<b>19.4</b>	<b>6.0</b>	<b>25.1</b>	<b>4.2</b>	<b>17.5</b>	<b>2.5</b>	<b>7.4</b>	<b>1.2</b>	<b>1.4</b>	<b>1.0</b>	<b>5.8</b>	<b>1.5</b>	<b>82.5</b>	<b>17.5</b>	<b>100.0</b>		



Table 11: Returning Resident Arrivals by Country of Residence by Age Groups by Sex: 1<sup>st</sup> Quarter 2015

Country of Usual Residence	Age-Group														Total				
	0-14		15-24		25-34		35-44		45-54		55-64		65+		Not Stated		M	F	All
	M	F	M	F	M	F	M	F	M	F	M	F	M	F	M	F	M	F	All
Australia	-	-	-	-	-	-	-	-	-	-	-	-	-	-	-	-	-	-	-
PNG	-	-	-	-	-	-	-	-	-	-	-	-	-	-	-	-	-	-	-
US	-	-	-	-	-	-	-	-	-	-	-	-	-	-	-	-	-	-	-
NZ	-	-	-	-	-	-	-	-	-	-	-	-	-	-	-	-	-	-	-
UK	-	-	-	-	-	-	-	-	-	-	-	-	-	-	-	-	-	-	-
Japan	-	-	4	1	3	1	8	1	1	1	2	-	-	1	1	19	5	24	
Germany	-	-	-	-	-	-	-	-	-	-	-	-	-	-	-	-	-	-	-
Canada	-	-	-	-	-	-	-	-	-	-	-	-	-	-	-	-	-	-	-
Oth.Pacific	-	-	-	-	-	-	-	-	-	-	-	-	-	-	-	-	-	-	-
Vanuatu	-	-	-	-	-	-	-	-	-	-	-	-	-	-	-	-	-	-	-
Hong Kong	-	-	-	-	-	-	-	-	-	-	-	-	-	-	-	-	-	-	-
Fiji	-	-	-	-	-	-	-	-	-	-	-	-	-	-	-	-	-	-	-
Oth.Asia	-	-	-	-	-	-	-	-	-	-	-	-	-	-	-	-	-	-	-
Netherlands	-	-	-	-	-	-	-	-	-	-	-	-	-	-	-	-	-	-	-
Oth.Europe	-	-	-	-	-	-	-	-	-	-	-	-	-	-	-	1	-	-	1
France	-	-	-	-	-	-	-	-	-	-	-	-	-	-	-	-	-	-	-
Italy	-	-	-	-	-	-	-	-	-	-	-	-	-	-	-	-	-	-	-
China	-	-	-	-	-	-	-	-	-	-	-	-	-	-	-	-	-	-	-
Oth.Country	-	-	-	-	-	-	-	-	-	-	-	-	-	-	-	-	-	-	-
Solomon Is.	136	118	636	480	793	443	636	345	492	254	227	95	75	22	295	180	3,290	1,937	5,227
Total	136	118	640	481	796	444	644	346	493	255	229	95	75	22	296	181	3310	1942	5,252
Percentage																			
Australia	-	-	-	-	-	-	-	-	-	-	-	-	-	-	-	-	-	-	-
PNG	-	-	-	-	-	-	-	-	-	-	-	-	-	-	-	-	-	-	-
US	-	-	-	-	-	-	-	-	-	-	-	-	-	-	-	-	-	-	-
NZ	-	-	-	-	-	-	-	-	-	-	-	-	-	-	-	-	-	-	-
UK	-	-	-	-	-	-	-	-	-	-	-	-	-	-	-	-	-	-	-
Japan	-	-	17	4	13	4	33	4	4	4	8	-	-	4	4	79	21	100	
Germany	-	-	-	-	-	-	-	-	-	-	-	-	-	-	-	-	-	-	-
Canada	-	-	-	-	-	-	-	-	-	-	-	-	-	-	-	-	-	-	-
Oth.Pacific	-	-	-	-	-	-	-	-	-	-	-	-	-	-	-	-	-	-	-
Vanuatu	-	-	-	-	-	-	-	-	-	-	-	-	-	-	-	-	-	-	-
Hong Kong	-	-	-	-	-	-	-	-	-	-	-	-	-	-	-	-	-	-	-
Fiji	-	-	-	-	-	-	-	-	-	-	-	-	-	-	-	-	-	-	-
Oth.Asia	-	-	-	-	-	-	-	-	-	-	-	-	-	-	-	-	-	-	-
Netherlands	-	-	-	-	-	-	-	-	-	-	-	-	-	-	-	-	-	-	-
Oth.Europe	-	-	-	-	-	-	100	-	-	-	-	-	-	-	-	-	100	-	100
France	-	-	-	-	-	-	-	-	-	-	-	-	-	-	-	-	-	-	-
Italy	-	-	-	-	-	-	-	-	-	-	-	-	-	-	-	-	-	-	-
China	-	-	-	-	-	-	-	-	-	-	-	-	-	-	-	-	-	-	-
Oth.Country	-	-	-	-	-	-	-	-	-	-	-	-	-	-	-	-	-	-	-
Solomon Is.	2.6	2.3	12.2	9.2	15.2	8.5	12.2	6.6	9.4	4.9	4.3	1.8	1.4	0.4	5.6	3.4	62.9	37.1	100.0
Total	2.6	2.2	12.2	9.2	15.2	8.5	12.3	6.6	9.4	4.9	4.4	1.8	1.4	0.4	5.6	3.4	63.0	37.0	100.0

Table 12: Returning Resident Arrivals by Country of Residence by Occupation and Sex: 1<sup>st</sup> Quarter 2015

Country of Usual Residence	Professional and Technical		Administration and Managerial		Clerical & Related Work		Sales Worker		Service Worker		Agriculture Forestry Fishery		Production & Related Work		Other		No Work		Total		All
	M	F	M	F	M	F	M	F	M	F	M	F	M	F	M	F	M	F	M	F	
Australia	-	-	-	-	-	-	-	-	-	-	-	-	-	-	-	-	-	-	-	-	-
PNG	-	-	-	-	-	-	-	-	-	-	-	-	-	-	-	-	-	-	-	-	-
US	-	-	-	-	-	-	-	-	-	-	-	-	-	-	-	-	-	-	-	-	-
NZ	-	-	-	-	-	-	-	-	-	-	-	-	-	-	-	-	-	-	-	-	-
UK	-	-	-	-	-	-	-	-	-	-	-	-	-	-	-	-	-	-	-	-	-
Japan	9	3	1	-	1	-	1	-	1	-	-	-	-	-	4	2	2	-	19	5	24
Germany	-	-	-	-	-	-	-	-	-	-	-	-	-	-	-	-	-	-	-	-	-
Canada	-	-	-	-	-	-	-	-	-	-	-	-	-	-	-	-	-	-	-	-	-
Oth.Pacific	-	-	-	-	-	-	-	-	-	-	-	-	-	-	-	-	-	-	-	-	-
Vanuatu	-	-	-	-	-	-	-	-	-	-	-	-	-	-	-	-	-	-	-	-	-
Hong Kong	-	-	-	-	-	-	-	-	-	-	-	-	-	-	-	-	-	-	-	-	-
Fiji	-	-	-	-	-	-	-	-	-	-	-	-	-	-	-	-	-	-	-	-	-
Oth.Asia	-	-	-	-	-	-	-	-	-	-	-	-	-	-	-	-	-	-	-	-	-
Netherlands	-	-	-	-	-	-	-	-	-	-	-	-	-	-	-	-	-	-	-	-	-
Oth.Europe	1	-	-	-	-	-	-	-	-	-	-	-	-	-	-	-	-	-	1	-	1
France	-	-	-	-	-	-	-	-	-	-	-	-	-	-	-	-	-	-	-	-	-
Italy	-	-	-	-	-	-	-	-	-	-	-	-	-	-	-	-	-	-	-	-	-
China	-	-	-	-	-	-	-	-	-	-	-	-	-	-	-	-	-	-	-	-	-
Oth.Country	-	-	-	-	-	-	-	-	-	-	-	-	-	-	-	-	-	-	-	-	-
Solomon Is.	1,847	991	252	97	9	20	35	9	46	176	23	4	64	1	784	448	230	191	3,290	1,937	5,227
Total	1,857	994	253	97	10	20	36	9	47	176	23	4	64	1	788	450	232	191	3,310	1,942	5,252
Percentage																					
Australia	-	-	-	-	-	-	-	-	-	-	-	-	-	-	-	-	-	-	-	-	-
PNG	-	-	-	-	-	-	-	-	-	-	-	-	-	-	-	-	-	-	-	-	-
US	-	-	-	-	-	-	-	-	-	-	-	-	-	-	-	-	-	-	-	-	-
NZ	-	-	-	-	-	-	-	-	-	-	-	-	-	-	-	-	-	-	-	-	-
UK	-	-	-	-	-	-	-	-	-	-	-	-	-	-	-	-	-	-	-	-	-
Japan	37.5	12.5	4.2	-	4.2	-	4.2	-	4.2	-	-	-	-	-	16.7	8.3	8.3	-	79.2	20.8	100.0
Germany	-	-	-	-	-	-	-	-	-	-	-	-	-	-	-	-	-	-	-	-	-
Canada	-	-	-	-	-	-	-	-	-	-	-	-	-	-	-	-	-	-	-	-	-
Oth.Pacific	-	-	-	-	-	-	-	-	-	-	-	-	-	-	-	-	-	-	-	-	-
Vanuatu	-	-	-	-	-	-	-	-	-	-	-	-	-	-	-	-	-	-	-	-	-
Hong Kong	-	-	-	-	-	-	-	-	-	-	-	-	-	-	-	-	-	-	-	-	-
Fiji	-	-	-	-	-	-	-	-	-	-	-	-	-	-	-	-	-	-	-	-	-
Oth.Asia	-	-	-	-	-	-	-	-	-	-	-	-	-	-	-	-	-	-	-	-	-
Netherlands	-	-	-	-	-	-	-	-	-	-	-	-	-	-	-	-	-	-	-	-	-
Oth.Europe	100.0	-	-	-	-	-	-	-	-	-	-	-	-	-	-	-	-	-	100.0	-	100.0
France	-	-	-	-	-	-	-	-	-	-	-	-	-	-	-	-	-	-	-	-	-
Italy	-	-	-	-	-	-	-	-	-	-	-	-	-	-	-	-	-	-	-	-	-
China	-	-	-	-	-	-	-	-	-	-	-	-	-	-	-	-	-	-	-	-	-
Oth.Country	-	-	-	-	-	-	-	-	-	-	-	-	-	-	-	-	-	-	-	-	-
Solomon Is.	35.3	19.0	4.8	1.9	0.2	0.4	0.7	0.2	0.9	3.4	0.4	0.1	1.2	0.0	15.0	8.6	4.4	3.7	62.9	37.1	100.0
Total	35.4	18.9	4.8	1.8	0.2	0.4	0.7	0.2	0.9	3.4	0.4	0.1	1.2	0.0	15.0	8.6	4.4	3.6	63.0	37.0	100.0