



**Solomon Islands Government**

**Statistical Bulletin: No: 15/2015**

**VISITOR STATISTICS**

(Second Quarter 2015)

**Solomon Islands National Statistics Office**

**Ministry of Finance**

**Honiara**

## TABLE OF CONTENTS

Introduction.....	3
COMMENTARY OF RESULTS .....	5
<i>International Arrivals</i> .....	5
<i>Arrivals by Country of Residence</i> .....	5
<i>Visitor by Month</i> .....	5
<i>Tourists</i> .....	5
<i>Visitors by Purpose of Visit</i> .....	5
<i>Visitor by Age Group</i> .....	5
<i>Visitor by Occupation:</i> .....	5
<i>Visitor by Carrier</i> .....	5
<b>Charts</b>	
<hr/>	
Chart 1: Arrivals by Category, 2 <sup>nd</sup> Quarter 2015 .....	6
Chart 2: Visitor Arrivals by Country of Residence by quarter: 2 <sup>nd</sup> Quarter 2015.....	7
Chart 3: Visitor Arrivals by Month, 2012 to 2 <sup>nd</sup> Quarter 2015 .....	8
Chart 4: Tourist Arrivals by Country of Residence, 2 <sup>nd</sup> Quarter 2015.....	9
Chart 5: Visitor Arrivals by Country of Residence by Purpose of Visit, 2 <sup>nd</sup> Quarter 2015.....	10
Chart 6: Visitor Arrivals by Age group category by sex, 2 <sup>nd</sup> Quarter 2015.....	11
Chart 7: Visitor Arrivals by Occupation by sex, 2 <sup>nd</sup> Quarter 2015.....	12
Chart 8: Visitor Arrivals by Carrier by sex, 2 <sup>nd</sup> Quarter 2015.....	13
<b>Tables</b>	
Table 1: Total Arrivals Classified by Purpose of Travel by Sex by Year by Quarter: 2 <sup>nd</sup> Quarter 2015 .....	6
Table 2: Visitors Arrivals by Country of Residence by Year by Quarter: 2 <sup>nd</sup> Quarter 2015.....	7
Table 3: Visitors Arrivals by Month: 2006 to 2 <sup>nd</sup> Quarter 2015 .....	8
Table 4: Visitors Classified as Tourists by Country of Residence by Year, Quarter and Average Length..... of Stay: 2 <sup>nd</sup> quarter 2013 to 2 <sup>nd</sup> Quarter 2015 .....	9
Table 5: Visitor Arrivals by Country of Residence by Purpose of Visit by sex: 2 <sup>nd</sup> Quarter 2015 .....	10
Table 6: Visitors Arrivals by Country of Residence by Age Groups by sex: 2 <sup>nd</sup> Quarter 2015 .....	11
Table 7: Visitors Arrivals by Country of Residence by Occupation and Sex: 2 <sup>nd</sup> Quarter 2015 .....	12
Table 8: Visitors Arrivals by Country of Residence by Carrier By Sex: 2 <sup>nd</sup> Quarter 2015.....	13
Appendix 1 .....	14
<i>Concepts and Definitions</i> .....	14
Appendix 2.....	15
Table 9: Intending Resident Arrivals by Country of residence by Occupation and sex: 2 <sup>nd</sup> Quarter 2015.....	15
Table 10: Intending Resident Arrivals by country of Residence by Age Groups by Sex: 2 <sup>nd</sup> Quarter 2015.....	16
Table 11: Returning Resident Arrivals by country of Residence by Age Groups and sex: 2 <sup>nd</sup> Quarter 2015....	17
Table 12: Returning Resident Arrivals by country of Residence by Occupation and sex: 2 <sup>nd</sup> Quarter 2015....	18

## Introduction

This quarterly bulletin is produced by the National Statistics Office NSO in the Ministry of Finance and Treasury. It provides information on international arrivals comprised of the returning resident, intending resident, and visitor. The explanation of these categories is provided in Appendix 1 of the bulletin.

Visitor category comprised the bigger share of the bulletin, (portrayed in tables 1 to 8); compared to the returning and intending resident category portrayed in Tables 1, and 9 to 12. The bulletin includes twelve tables and eight charts stretched over cross-field tabulation, preferably to meet information need of local, regional, and international researchers.

The information captured through a self fill Disembarkation form that was completed by all disembarking passengers. The forms were collected by Immigration officials at international check-in counters on arrival. The coverage of the bulletin is complete.

Sheer acknowledgement is owed to the Immigration Department for their continuous support of this bulletin, by providing an office space and permitting the statistics office to input completed forms. With the official arrangement in-placed between the Statistics and Immigration departments this bulletin is possible.

The inclusion of four new tables 9 to 12 in Appendix 2 of the bulletin anticipates to complete the distribution portrait of Intending and Returning resident. The distribution is by age groups, occupation and by country of usual residence.

Data limitations, highlighted in the previous bulletin still remain, though some have substantially improved but noted again for ease of reference as follows:-

- Data entry duplication by the Immigration and Statistics departments was a long standing issue. Discussion of the issues had been made by the two departments, though resolution has been recognized, this was yet to be put in place.
- Timeliness of visitor statistics has improved but the bulletin may be delayed by the production process.
- The information contained in the bulletin is based on information captured from the data source by the SINSO.
- The monetary value of the industry is not available and thus not possible in this bulletin. The concepts and definitions of the arrival categories were included in Appendix 1. The symbols that are likely to be used are:

-	zero if representing a value
-	negative change if representing a percentage change
+	positive change if representing a percentage change
p	preliminary figure, subject to revision
r	revised
e	estimate
n/a	not available

For more information contact the Statistics Office, Department of Finance and Treasury:

TELEPHONE : (677) 22154/21427

FACSMILE : (677) 23775

E-MAIL : STATS-management@mof.gov.sb

: STATS-SocialDemography@mof.gov.sb

WEBSITE : **<http://www.spc.int/prism/country/sb/stats>**

Contact persons:      1. Mrs. Irene **KALAUMA**, Chief Statistician  
                                 2. Mrs. Anterlyn **TUZAKANA**, Senior Statistician

## COMMENTARY OF RESULTS

### International Arrivals

Total Arrivals for the second quarter of 2015 was 10,910. This is an increase of 15.8% compared to the previous quarter (1<sup>st</sup> Quarter 2015). Compared to the same quarter a year ago, an increase of 13% was recorded.

Arrivals classified by the category for the first quarter of 2015 showed that returning resident comprise of 40%. Visitors recorded 51% and the remaining 9% was recorded for intending resident.

Visitors' arrival for the first quarter showed an increase of 26.4% to 5,562 compared to the first quarter 2015 figure of 4,399. Compared to the same quarter in 2014, an increase of 12.9% was recorded. Table 1, showed visitor and returning resident categories comprised the larger proportion of all arrivals while the intending resident represents the lesser share during the quarter. Chart 1 gives a clear picture of all the categories.

The country of China is now added to the list of country of residence. In previous reports 'China' was merged with countries of 'Other Asia'.

### Visitor by Country of Residence

Arrivals by country of residence for second quarter of the year showed that Australians (45.3%) remains the frequent travellers to Solomon Islands, followed by Other Asia (10.9%), Fiji (7.3%), PNG (7.2%), NZ (6.8%), US (5.8%) and China (3.2%). Table 2 showed further detailed information.

### Visitor by Month

Visitors by monthly arrivals for the quarter showed that June has the highest number of arrivals with 2,131 persons. This was followed by the month of April with a recorded total of 1,750 persons and May the least with 1,681 persons.

### Tourists

Tourist<sup>1</sup> arrivals for second quarter of the year recorded a total of 1,170 persons and they spent an average of 13 days in the country. The highest number of tourists recorded for the quarter comes from Australia (49.1%) and staying in the country for an average of 12 days. This was followed by Other Asia (11.5%), US (8.8%), PNG (5.7%), China (4.3%), and Other Europe (4.0%)

### Visitor by Purpose of Visit

Distribution of visitors by purpose of visit revealed that Business & Conference (30.9%) as most popular during the quarter. This was followed by Other (25.3%), Visit friends & relatives (22.8%), Holiday & Vocation (19.4%) and Transit & stopover the least with (1.6%).

### Visitor by Age Group

Visitor Arrivals by broad age groups showed that 78.4% of arrivals were in the 25years to 64years age range. The younger and the older age brackets represent 17.1% while the remaining 4.5% represents visitors who did not state their age. Male represent 71.2% of the arrival and female 28.8%. (Refer to Chart 6)

### Visitor by Occupation

Visitor by occupational category revealed that those who stated Other (39.4%) recorded the highest during the quarter. This was followed by Professional & Technical (30.2%), Administration and managerial (11.6%), No Work (8.7%), Production & Related Work (3.4%) and Service Worker (3.2%). Table 7 further revealed that Australia not only dominated the Arrivals in terms of markets but also dominated most of the categories of occupations during the quarter. Refer to Table 7 for further analysis.

### Visitor by Carrier

The most popular carriers during the quarter were Solomon Airlines (49.9%) followed by Virgin Australia (24.4%), Air Niu Gini (13.3%) and Fiji Airways (12.3%).

---

<sup>1</sup> Refer to Appendix 1 for the definition

Table 1: Total Arrivals Classified by Purpose of Travel by Sex, by Year by Quarter: 2<sup>nd</sup> Quarter 2015

Year / Quarter	Returning Resident						Intending Resident			Visitor			Total			
	Solomon Islander			Non-Solomon Islander			All	M	F	T	M	F	T	M	F	All
	M	F	T	M	F	T										
2011 3 <sup>rd</sup>	1,716	739	2,455	642	282	924	3,379	930	275	1,205	4,523	1,721	6,244	7,811	3,017	10,828
4 <sup>th</sup>	3,297	1,765	5,062	4	2	6	5,068	805	268	1,073	4,341	1,732	6,073	8,447	3,767	12,214
2012 1 <sup>st</sup>	1,915	994	2,909	15	3	18	2,927	1,029	387	1,416	3,554	1,097	4,651	6,513	2,481	8,994
2 <sup>nd</sup>	1,782	967	2,749	667	312	979	3,728	695	278	973	4,921	2,008	6,929	8,065	3,565	11,630
3 <sup>rd</sup>	2,169	1,218	3,387	22	12	34	3,421	840	255	1,095	5,123	2,184	7,307	8,154	3,669	11,823
4 <sup>th</sup>	3,192	1,784	4,976	5	1	6	4,982	631	215	846	3,572	1,466	5,038	7,400	3,466	10,866
2013 1 <sup>st</sup>	1,966	1,111	3,077	6	-	6	3,083	961	338	1,299	4,034	1,284	5,318	6,967	2,733	9,700
2 <sup>nd</sup>	2,422	1,344	3,766	1	2	3	3,769	764	279	1,043	4,531	1,664	6,195	7,718	3,289	11,007
3 <sup>rd</sup>	2,442	1,415	3,857	5	3	8	3,865	715	228	943	5,007	1,880	6,887	8,169	3,526	11,695
4 <sup>th</sup>	3,577	2,051	5,628	12	12	24	5,652	620	224	844	4,294	1,737	6,031	8,503	4,024	12,527
2014 1 <sup>st</sup>	2,100	1,287	3,387	3	3	6	3,393	841	318	1,159	3,685	1,069	4,754	6,629	2,677	9,306
2 <sup>nd</sup>	2,511	1,231	3,742	126	56	182	3,924	604	204	808	3,506	1,419	4,925	6,747	2,910	9,657
3 <sup>rd</sup>	2,399	1,295	3,694	5	4	9	3,703	823	244	1,067	3,792	1,691	5,483	7,019	3,234	10,253
4 <sup>th</sup>	3,290	1,937	5,227	20	5	25	5,252	692	147	839	3,481	1,427	4,908	7,483	3,516	10,999
2015 1 <sup>st</sup>	2,356	1,530	3,886	9	6	15	3,901	843	280	1,123	3,251	1,148	4,399	6,459	2,964	9,423
2 <sup>nd</sup>	2,770	1,535	4,305	14	3	17	4,322	825	201	1,026	3,958	1,604	5,562	7,567	3,343	10,910
Percentage change																
12 <sup>3rd</sup> -12 <sup>4th</sup>	47.2	46.5	46.9	-77.3	-91.7	-82.4	45.6	-24.9	-15.7	-22.7	-30.3	-32.9	-31.1	-9.2	-5.5	-8.1
12 <sup>1st</sup> -13 <sup>1st</sup>	2.7	11.8	5.8	-60.0	-100.0	-66.7	5.3	-6.6	-12.7	-8.3	13.5	17.0	14.3	7.0	10.2	7.8
12 <sup>4th</sup> -13 <sup>1st</sup>	-38.4	-37.7	-38.2	20.0	-100.0	-	-38.1	52.3	57.2	53.5	12.9	-12.4	5.6	-5.9	-21.1	-10.7
12 <sup>2nd</sup> -13 <sup>2nd</sup>	35.9	39.0	37.0	-99.9	-99.4	-99.7	1.1	9.9	0.4	7.2	-7.9	-17.1	-10.6	-4.3	-7.7	-5.4
13 <sup>1st</sup> -13 <sup>2nd</sup>	23.2	21.0	22.4	-83.3	-	-50.0	22.3	-20.5	-17.5	-19.7	12.3	29.6	16.5	10.8	20.3	13.5
12 <sup>3rd</sup> -13 <sup>3rd</sup>	12.6	16.2	13.9	-77.3	-75.0	-76.5	13.0	-14.9	-10.6	-13.9	-2.3	-13.9	-5.7	0.2	-3.9	-1.1
13 <sup>2nd</sup> -13 <sup>3rd</sup>	0.8	5.3	2.4	400.0	50.0	166.7	2.5	-6.4	-18.3	-9.6	10.5	13.0	11.2	5.8	7.2	6.3
12 <sup>4th</sup> -13 <sup>4th</sup>	12.1	15.0	13.1	140.0	1100.0	300.0	13.4	-1.7	4.2	-0.2	20.2	18.5	19.7	14.9	16.1	15.3
13 <sup>3rd</sup> -13 <sup>4th</sup>	46.5	44.9	45.9	140.0	300.0	200.0	46.2	-13.3	-1.8	-10.5	-14.2	-7.6	-12.4	4.1	14.1	7.1
13 <sup>1st</sup> -14 <sup>1st</sup>	6.8	15.8	10.1	-50.0	-	0.0	10.1	-12.5	-5.9	-10.8	-8.7	-16.7	-10.6	-4.9	-2.0	-4.1
13 <sup>4th</sup> -14 <sup>1st</sup>	-41.3	-37.3	-39.8	-75.0	-75.0	-75.0	-40.0	35.6	42.0	37.3	-14.2	-38.5	-21.2	-22.0	-33.5	-25.7
13 <sup>2nd</sup> -14 <sup>2nd</sup>	3.7	-8.4	-0.6	12500.0	2700.0	5966.7	4.1	-20.9	-26.9	-22.5	-22.6	-14.7	-20.5	-12.6	-11.5	-12.3
14 <sup>1st</sup> -14 <sup>2nd</sup>	19.6	-4.4	10.5	4100.0	1766.7	2933.3	15.6	-28.2	-35.8	-30.3	-4.9	32.7	3.6	1.8	8.7	3.8
13 <sup>3rd</sup> -14 <sup>3rd</sup>	-1.8	-8.5	-4.2	0.0	33.3	12.5	-4.2	15.1	7.0	13.1	-24.3	-10.1	-20.4	-14.1	-8.3	-12.3
14 <sup>2nd</sup> -14 <sup>3rd</sup>	-4.5	5.2	-1.3	-96.0	-92.9	-95.1	-5.6	36.3	19.6	32.1	8.2	19.2	11.3	4.0	11.1	6.2
13 <sup>4th</sup> -14 <sup>4th</sup>	-8.0	-5.6	-7.1	66.7	-58.3	4.2	-7.1	11.6	-34.4	-0.6	-18.9	-17.8	-18.6	-12.0	-12.6	-12.2
14 <sup>3rd</sup> -14 <sup>4th</sup>	37.1	49.6	41.5	300.0	25.0	177.8	41.8	-15.9	-39.8	-21.4	-8.2	-15.6	-10.5	6.6	8.7	7.3
14 <sup>1st</sup> -15 <sup>1st</sup>	12.2	18.9	14.7	200.0	100.0	150.0	15.0	0.2	-11.9	-3.1	-11.8	7.4	-7.5	-2.6	10.7	1.3
14 <sup>4th</sup> -15 <sup>1st</sup>	-28.4	-21.0	-25.7	-55.0	20.0	-40.0	-25.7	21.8	90.5	33.8	-6.6	-19.6	-10.4	-13.7	-15.7	-14.3
14 <sup>2nd</sup> -15 <sup>2nd</sup>	10.3	24.7	15.0	-88.9	-94.6	-90.7	10.1	36.6	-1.5	27.0	12.9	13.0	12.9	12.2	14.9	13.0
15 <sup>1st</sup> -15 <sup>2nd</sup>	17.6	0.3	10.8	55.6	-50.0	13.3	10.8	-2.1	-28.2	-8.6	21.7	39.7	26.4	17.2	12.8	15.8

Chart 1: Arrivals by category 2<sup>nd</sup> quarter 2015

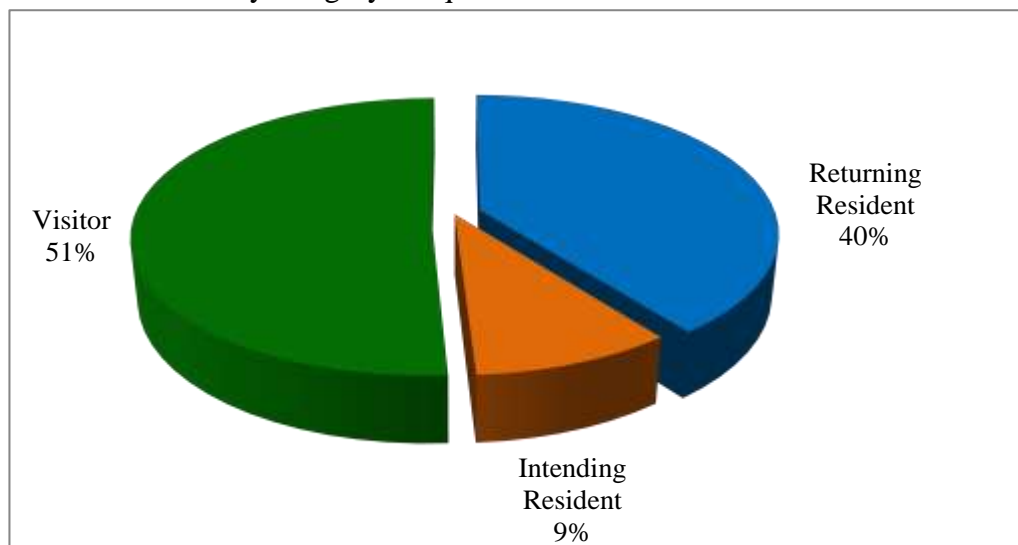


Table 2: Visitor Arrivals by Country of Residence by year by quarter: 2<sup>nd</sup> Quarter 2015

Country of Usual Residence	2012					2013					2014				2015	
	Q1	Q2	Q3	Q4	Total	Q1	Q2	Q3	Q4	Total	Q1	Q2	Q3	Q4	Q1	Q2
Australia	2,238	2,963	3,404	2,474	11,079	2,282	3,049	3,001	2,849	11,181	2088	2,225	2,521	2,300	1,750	2,519
PNG	431	602	476	464	1,973	458	417	621	523	2,019	383	260	275	325	323	398
US	183	356	561	234	1,334	231	325	357	248	1,161	231	362	324	220	329	322
NZ	285	545	560	357	1,747	381	531	607	386	1,905	277	343	404	382	281	376
UK	81	84	151	69	385	104	110	152	94	460	65	99	77	96	69	111
Japan	162	112	211	129	614	128	116	179	178	601	137	84	172	112	124	91
Germany	22	40	29	26	117	33	19	35	49	136	15	30	35	22	25	26
Canada	29	25	30	27	111	28	35	40	45	148	38	43	42	26	28	34
Oth.Pacific	101	811	371	135	1,418	188	142	202	228	760	139	81	184	167	127	139
Vanuatu	121	148	179	147	595	250	185	191	178	804	117	171	100	141	109	152
Hong Kong	14	20	21	25	80	16	18	33	14	81	35	11	28	21	25	32
Fiji	300	510	444	301	1,555	451	424	528	397	1,800	351	361	273	270	268	405
Other Asia	500	544	577	484	2,105	623	655	743	604	2,625	689	580	658	497	603	609
Netherlands	12	11	23	11	57	10	6	24	23	63	7	18	13	11	11	11
Oth.Europe	76	74	121	50	321	53	57	70	107	287	119	76	130	103	101	109
France	24	19	36	9	88	21	21	26	25	93	21	19	33	13	10	15
Italy	13	12	40	28	93	16	18	16	33	83	14	10	21	30	21	16
China	-	-	-	-	-	-	-	-	-	-	-	103	167	155	164	177
Oth.Country	59	53	73	68	253	45	67	62	50	224	28	49	26	17	31	20
<b>Total</b>	<b>4,651</b>	<b>6,929</b>	<b>7,307</b>	<b>5,038</b>	<b>23,925</b>	<b>5,318</b>	<b>6,195</b>	<b>6,887</b>	<b>6,031</b>	<b>24,431</b>	<b>4,754</b>	<b>4,925</b>	<b>5,483</b>	<b>4,908</b>	<b>4,399</b>	<b>5,562</b>

	Percentage															
Australia	48.1	42.8	46.6	49.1	46.3	42.9	49.2	43.6	47.2	45.8	43.9	45.2	46.0	46.9	39.8	45.3
PNG	9.3	8.7	6.5	9.2	8.2	8.6	6.7	9.0	8.7	8.3	8.1	5.3	5.0	6.6	7.3	7.2
US	3.9	5.1	7.7	4.6	5.6	4.3	5.2	5.2	4.1	4.8	4.9	7.4	5.9	4.5	7.5	5.8
NZ	6.1	7.9	7.7	7.1	7.3	7.2	8.6	8.8	6.4	7.8	5.8	7.0	7.4	7.8	6.4	6.8
UK	1.7	1.2	2.1	1.4	1.6	2.0	1.8	2.2	1.6	1.9	1.4	2.0	1.4	2.0	1.6	2.0
Japan	3.5	1.6	2.9	2.6	2.6	2.4	1.9	2.6	3.0	2.5	2.9	1.7	3.1	2.3	2.8	1.6
Germany	0.5	0.6	0.4	0.5	0.5	0.6	0.3	0.5	0.8	0.6	0.3	0.6	0.6	0.4	0.6	0.5
Canada	0.6	0.4	0.4	0.5	0.5	0.5	0.6	0.6	0.7	0.6	0.8	0.9	0.8	0.5	0.6	0.6
Oth.Pacific	2.2	11.7	5.1	2.7	5.9	3.5	2.3	2.9	3.8	3.1	2.9	1.6	3.4	3.4	2.9	2.5
Vanuatu	2.6	2.1	2.4	2.9	2.5	4.7	3.0	2.8	3.0	3.3	2.5	3.5	1.8	2.9	2.5	2.7
Hong Kong	0.3	0.3	0.3	0.5	0.3	0.3	0.3	0.5	0.2	0.3	0.7	0.2	0.5	0.4	0.6	0.6
Fiji	6.5	7.4	6.1	6.0	6.5	8.5	6.8	7.7	6.6	7.4	7.4	7.3	5.0	5.5	6.1	7.3
Oth.Asia	10.8	7.9	7.9	9.6	8.8	11.7	10.6	10.8	10.0	10.7	14.5	11.8	12.0	10.1	13.7	10.9
Netherlands	0.3	0.2	0.3	0.2	0.2	0.2	0.1	0.3	0.4	0.3	0.1	0.4	0.2	0.2	0.3	0.2
Oth.Europe	1.6	1.1	1.7	1.0	1.3	1.0	0.9	1.0	1.8	1.2	2.5	1.5	2.4	2.1	2.3	2.0
France	0.5	0.3	0.5	0.2	0.4	0.4	0.3	0.4	0.4	0.4	0.4	0.4	0.6	0.3	0.2	0.3
Italy	0.3	0.2	0.5	0.6	0.4	0.3	0.3	0.2	0.5	0.3	0.3	0.2	0.4	0.6	0.5	0.3
China*	-	-	-	-	-	-	-	-	-	-	-	2.1	3.0	3.2	3.7	3.2
Oth.Country	1.3	0.8	1.0	1.3	1.1	0.8	1.1	0.9	0.8	0.9	0.6	1.0	0.5	0.3	0.7	0.4
<b>Total</b>	<b>100.0</b>	<b>100.0</b>	<b>100.0</b>	<b>100.0</b>	<b>100.0</b>	<b>100.0</b>	<b>100.0</b>	<b>100.0</b>	<b>100.0</b>	<b>100.0</b>	<b>100.0</b>	<b>100.0</b>	<b>100.0</b>	<b>100.0</b>	<b>100.0</b>	<b>100.0</b>

\*Figures for 'China' for previous quarters was included in 'Other Asia'

Chart 2: Visitors Arrival by Country of residence by quarter, 2<sup>nd</sup> quarter 2015

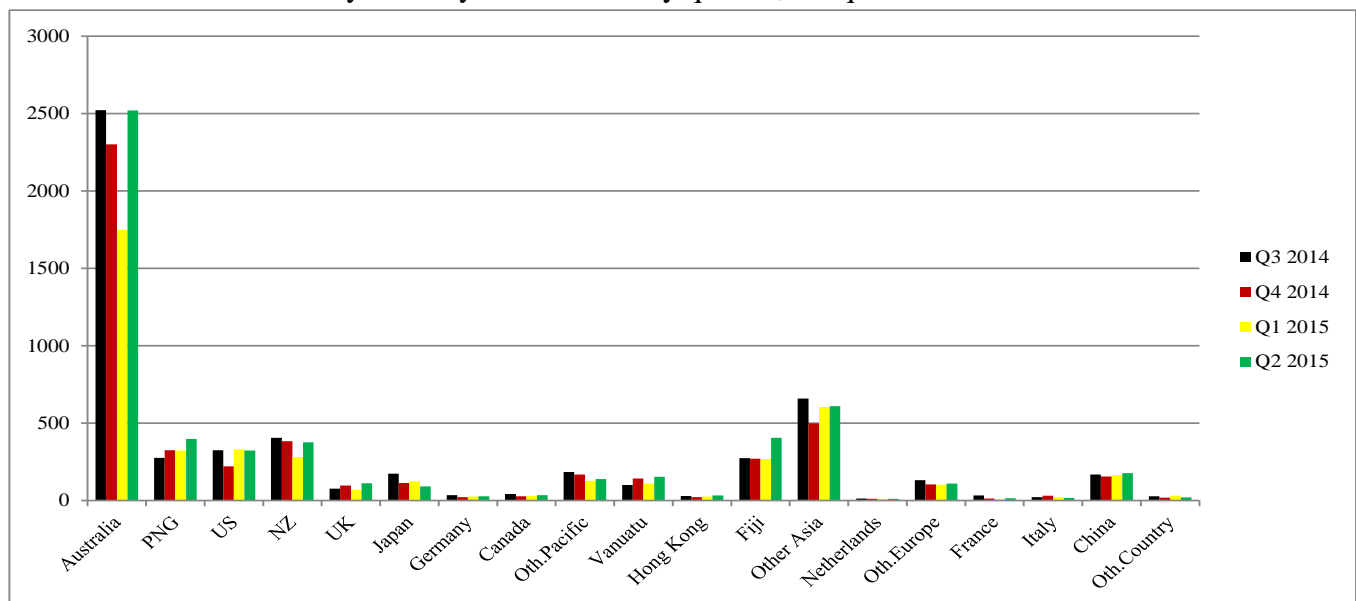


Table 3: Visitor Arrivals by Month: 2006 – 2<sup>nd</sup> Quarter 2015

Month	2006	2007	2008	2009	2010	2011	2012	2013	2014	2015
January	952	546	889	1,602	1,235	1,600	1,383	1,590	1,415	1,259
February	838	1,020	1,282	1,422	1,209	1,658	1,591	1,544	1,523	1,465
March	972	1,251	802	1,249	1,766	1,861	1,677	2,184	1,816	1,675
April	994	1,452	1,388	1,499	1,820	1,736	1,839	2,021	1,514	1,750
May	858	1,137	1,261	1,393	1,137	1,760	1,968	1,857	1,462	1,681
June	1,289	1,265	1,552	1,724	1,797	2,009	3,122	2,317	1,949	2,131
July	865	822	1,692	1,603	2,264	2,185	2,865	2,574	2,114	
August	892	1,299	1,469	1,520	1,845	1,900	2,133	2,022	1,639	
September	681	1,299	1,457	1,659	2,153	2,159	2,309	2,291	1,730	
October	942	1,260	1,399	1,709	1,813	1,931	1,929	2057	1,798	
November	1,118	1,246	1,545	1,475	1,624	2,195	1,545	1981	1,515	
December	1,081	1,151	1,528	1,405	1,858	1,947	1,564	1993	1,595	
<b>Total</b>	<b>11,482</b>	<b>13,748</b>	<b>16,264</b>	<b>18,260</b>	<b>20,521</b>	<b>22,941</b>	<b>23,925</b>	<b>24,431</b>	<b>20,070</b>	<b>9,961</b>
Percentage										
January	8.3	4.0	5.5	8.8	5.5	7.0	5.8	6.5	7.1	12.6
February	7.3	7.4	7.9	7.8	5.4	7.2	6.6	6.3	7.6	14.7
March	8.5	9.1	4.9	6.8	7.8	8.1	7.0	8.9	9.0	16.8
April	8.7	10.6	8.5	8.2	8.1	7.6	7.7	8.3	7.5	17.6
May	7.5	8.3	7.8	7.6	5.0	7.7	8.2	7.6	7.3	16.9
June	11.2	9.2	9.5	9.4	8.0	8.8	13.0	9.5	9.7	21.4
July	7.5	6.0	10.4	8.8	10.0	9.5	12.0	10.5	10.5	
August	7.8	9.4	9.0	8.3	8.2	8.3	8.9	8.3	8.2	
September	5.9	9.4	9.0	9.1	9.6	9.4	9.7	9.4	8.6	
October	8.2	9.2	8.6	9.4	8.0	8.4	8.1	8.4	9.0	
November	9.7	9.1	9.5	8.1	7.2	9.6	6.5	8.1	7.5	
December	9.4	8.4	9.4	7.7	8.2	8.5	6.5	8.2	7.9	
<b>Total</b>	<b>100</b>	<b>100.0</b>	<b>100.0</b>	<b>100.0</b>	<b>100.0</b>	<b>100.0</b>	<b>100.0</b>	<b>100.0</b>	<b>100.0</b>	<b>100.0</b>

Chart 3: Visitors Arrival by month, 2012 – 2<sup>nd</sup> quarter 2015

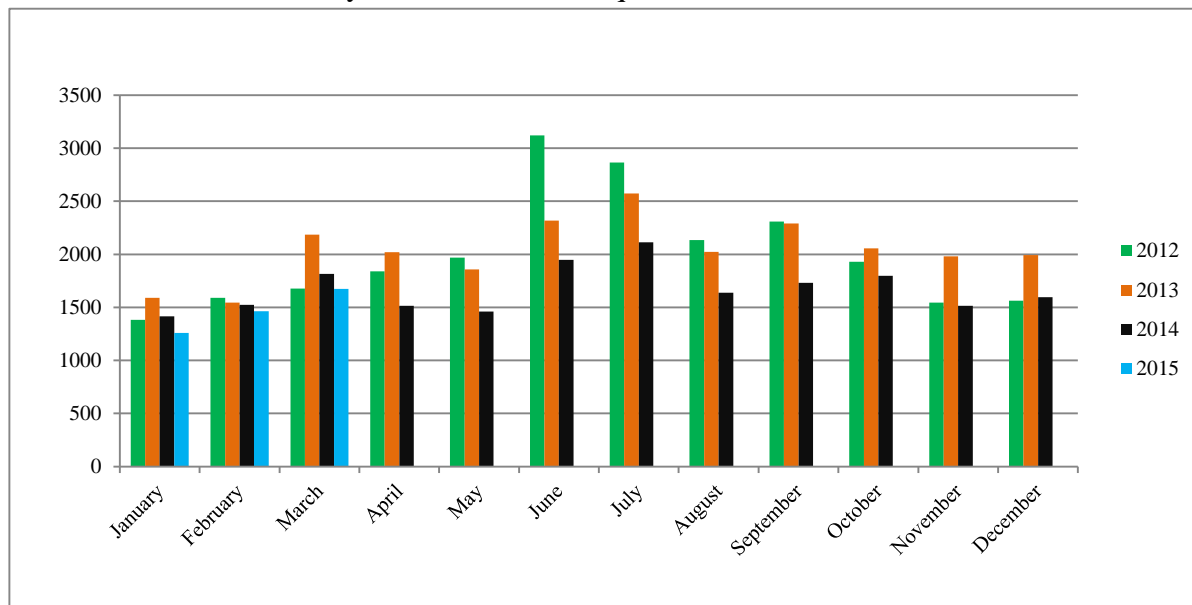




Table 4: Visitors, classified as tourists by Country of residence by year, quarter and average length of stay: 2<sup>nd</sup> quarter 2013 – 2<sup>nd</sup> Quarter 2015

Country of Usual Residence	2013						2014								2015			
	Quarter 2		Quarter 3		Quarter 4		Quarter 1		Quarter 2		Quarter 3		Quarter 4		Quarter 1		Quarter 2	
	tourist	day	tourist	day	tourist	day	tourist	day	tourist	day	tourist	day	tourist	day	tourist	day	tourist	day
Australia	981	11	943	12	914	13	484	13	745	13	890	15	782	16	476	14.4	575	11.7
PNG	39	12	43	10	105	29	42	14	50	8	42	12	95	19	49	6.7	67	4.0
US	136	12	182	13	128	14	82	13	208	10	169	13	126	12	126	7.4	103	14.2
NZ	95	15	62	18	69	22	13	13	35	10	63	17	81	18	21	7.5	31	21.7
UK	39	21	76	23	31	18	25	24	28	26	34	23	52	14	33	19.6	29	14.7
Japan	33	19	59	10	75	8	37	7	10	11	69	14	47	7	48	7.0	20	7.1
Germany	9	11	21	11	33	22	9	16	12	11	26	17	11	18	14	6.1	12	18.7
Canada	12	10	14	16	20	11	8	11	24	9	20	14	11	13	17	13.9	17	12.5
Oth.Pacific	16	15	21	15	30	10	8	9	10	8	19	14	22	25	11	11.3	15	16.6
Vanuatu	17	8	12	13	34	17	17	2	32	6	23	17	37	10	20	5.1	18	14.4
Hong Kong	8	21	8	14	3	27	10	10	1	7	9	13	4	6	7	12.1	12	7.4
Fiji	12	18	14	9	37	14	21	14	28	11	20	14	21	27	23	18.2	24	26.6
Oth.Asia	119	25	164	15	151	20	150	21	162	22	196	21	113	23	129	20.9	135	18.2
Netherlands	2	13	6	23	13	14	3	13	9	13	9	23	2	30	8	11.3	2	11.5
Oth.Europe	33	14	30	13	58	15	66	12	32	17	80	17	51	18	64	11.7	47	11.3
France	8	8	13	17	15	33	7	11	9	12	24	18	5	9	3	14.7	4	11.0
Italy	7	25	7	11	15	46	5	10	5	11	16	13	14	31	6	16.5	6	5.2
China	-	-	-	-	-	-	-	-	28	35	57	25	59	12	41	20.9	50	16.1
Oth.Country	22	7	17	12	23	21	1	20	16	13	10	13	5	18	9	29.7	3	10.0
Total	1,588	13	1,692	13	1,754	16	988	14	1,444	14	1,776	16	1,538	16	1,105	13.7	1,170	13.1

\*Figures for 'China' for previous quarters was included in 'Other Asia'

Chart 4: Tourist Arrivals by Country of Residence, 2<sup>nd</sup> Quarter 2015

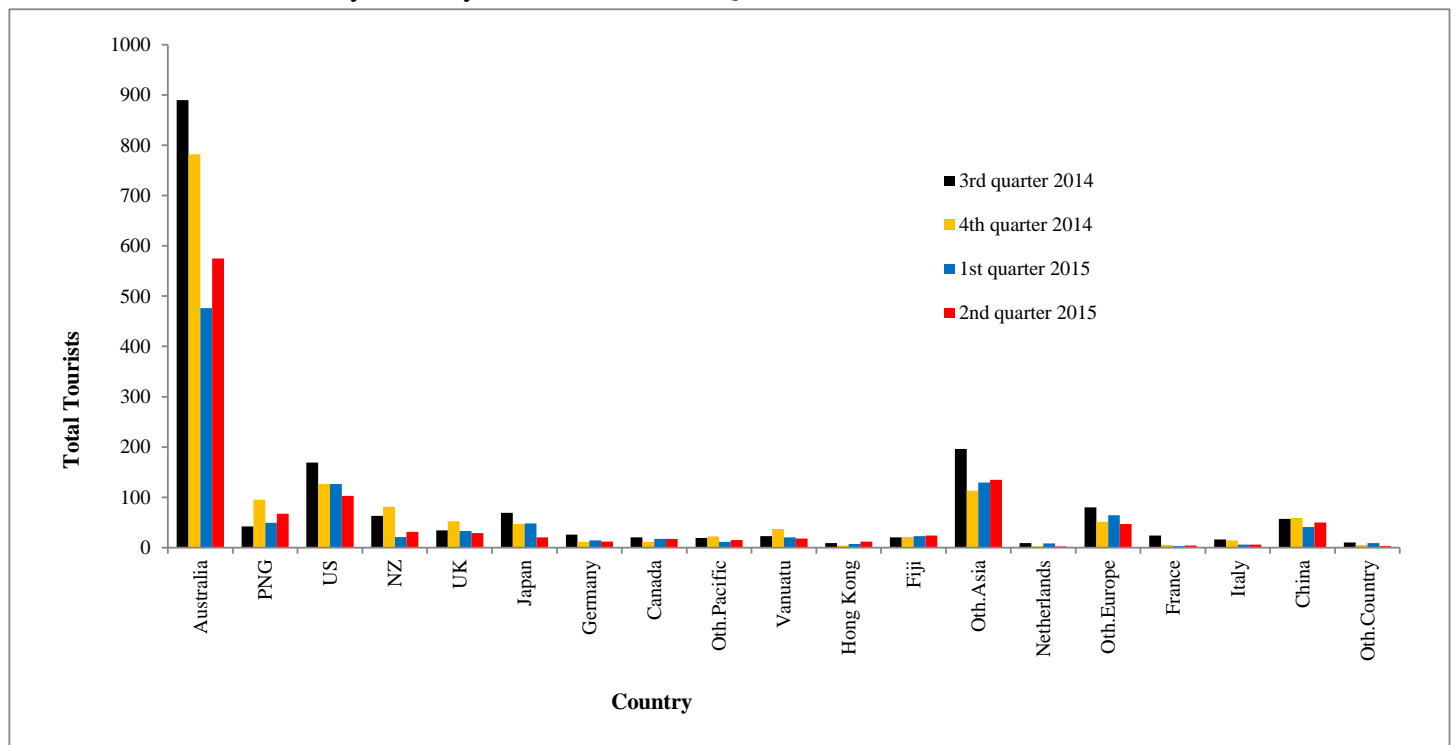


Table 5: Visitor Arrivals by Country of Residence by Purpose of Visit by sex: 2<sup>nd</sup> Quarter 2015

Country of Usual Residence	Business & Conference			Holiday & Vocation			Transit & Stopover			Visit friends/Relatives			Other			Total		
	M	F	T	M	F	T	M	F	T	M	F	T	M	F	T	M	F	All
Australia	454	137	591	334	227	561	11	3	14	390	324	714	469	170	639	1,658	861	2,519
PNG	158	35	193	24	15	39	22	6	28	50	21	71	43	24	67	297	101	398
US	54	19	73	62	34	96	5	2	7	51	27	78	47	21	68	219	103	322
NZ	133	20	153	15	10	25	6	-	6	45	34	79	87	26	113	286	90	376
UK	17	5	22	16	10	26	3	-	3	13	8	21	26	13	39	75	36	111
Japan	42	5	47	13	7	20	-	-	-	7	1	8	14	2	16	76	15	91
Germany	3	3	6	8	4	12	-	-	-	3	1	4	3	1	4	17	9	26
Canada	4	-	4	10	7	17	-	-	-	3	3	6	6	1	7	23	11	34
Oth.Pacific	44	17	61	9	5	14	1	-	1	17	10	27	24	12	36	95	44	139
Vanuatu	46	17	63	7	2	9	8	1	9	21	9	30	31	10	41	113	39	152
Hong Kong	10	1	11	6	5	11	-	1	1	3	2	5	1	3	4	20	12	32
Fiji	132	58	190	12	11	23	1	-	1	46	22	68	89	34	123	280	125	405
Oth.Asia	179	22	201	94	27	121	13	1	14	71	19	90	169	14	183	526	83	609
Netherlands	1	1	2	2	-	2	-	-	-	3	1	4	2	1	3	8	3	11
Oth.Europe	19	3	22	32	12	44	3	-	3	10	6	16	18	6	24	82	27	109
France	2	1	3	3	1	4	-	-	-	2	1	3	5	-	5	12	3	15
Italy	1	-	1	4	2	6	-	-	-	6	1	7	2	-	2	13	3	16
China	56	13	69	37	13	50	-	-	-	24	8	32	24	2	26	141	36	177
Oth.Country	4	2	6	1	-	1	2	-	2	4	-	4	6	1	7	17	3	20
<b>Total</b>	<b>1359</b>	<b>359</b>	<b>1718</b>	<b>689</b>	<b>392</b>	<b>1081</b>	<b>75</b>	<b>14</b>	<b>89</b>	<b>769</b>	<b>498</b>	<b>1267</b>	<b>1066</b>	<b>341</b>	<b>1407</b>	<b>3,958</b>	<b>1,604</b>	<b>5,562</b>
<b>Percentage</b>																		
Australia	18.0	5.4	23.5	13.3	9.0	22.3	0.4	0.1	0.6	15.5	12.9	28.3	18.6	6.7	25.4	65.8	34.2	100.0
PNG	39.7	8.8	48.5	6.0	3.8	9.8	5.5	1.5	7.0	12.6	5.3	17.8	10.8	6.0	16.8	74.6	25.4	100.0
US	16.8	5.9	22.7	19.3	10.6	29.8	1.6	0.6	2.2	15.8	8.4	24.2	14.6	6.5	21.1	68.0	32.0	100.0
NZ	35.4	5.3	40.7	4.0	2.7	6.6	1.6	-	1.6	12.0	9.0	21.0	23.1	6.9	30.1	76.1	23.9	100.0
UK	15.3	4.5	19.8	14.4	9.0	23.4	2.7	-	2.7	11.7	7.2	18.9	23.4	11.7	35.1	67.6	32.4	100.0
Japan	46.2	5.5	51.6	14.3	7.7	22.0	-	-	-	7.7	1.1	8.8	15.4	2.2	17.6	83.5	16.5	100.0
Germany	11.5	11.5	23.1	30.8	15.4	46.2	-	-	-	11.5	3.8	15.4	11.5	3.8	15.4	65.4	34.6	100.0
Canada	11.8	-	11.8	29.4	20.6	50.0	-	-	-	8.8	8.8	17.6	17.6	2.9	20.6	67.6	32.4	100.0
Oth.Pacific	31.7	12.2	43.9	6.5	3.6	10.1	0.7	-	0.7	12.2	7.2	19.4	17.3	8.6	25.9	68.3	31.7	100.0
Vanuatu	30.3	11.2	41.4	4.6	1.3	5.9	5.3	0.7	5.9	13.8	5.9	19.7	20.4	6.6	27.0	74.3	25.7	100.0
Hong Kong	31.3	3.1	34.4	18.8	15.6	34.4	-	3.1	3.1	9.4	6.3	15.6	3.1	9.4	12.5	62.5	37.5	100.0
Fiji	32.6	14.3	46.9	3.0	2.7	5.7	0.2	-	0.2	11.4	5.4	16.8	22.0	8.4	30.4	69.1	30.9	100.0
Oth.Asia	29.4	3.6	33.0	15.4	4.4	19.9	2.1	0.2	2.3	11.7	3.1	14.8	27.8	2.3	30.0	86.4	13.6	100.0
Netherlands	9.1	9.1	18.2	18.2	-	18.2	-	-	-	27.3	9.1	36.4	18.2	9.1	27.3	72.7	27.3	100.0
Oth.Europe	17.4	2.8	20.2	29.4	11.0	40.4	2.8	-	2.8	9.2	5.5	14.7	16.5	5.5	22.0	75.2	24.8	100.0
France	13.3	6.7	20.0	20.0	6.7	26.7	-	-	-	13.3	6.7	20.0	33.3	-	33.3	80.0	20.0	100.0
Italy	6.3	-	6.3	25.0	12.5	37.5	-	-	-	37.5	6.3	43.8	12.5	-	12.5	81.3	18.8	100.0
China	31.6	7.3	39.0	20.9	7.3	28.2	-	-	-	13.6	4.5	18.1	13.6	1.1	14.7	79.7	20.3	100.0
Oth.Country	20.0	10.0	30.0	5.0	-	5.0	10.0	-	10.0	20.0	0.0	20.0	30.0	5.0	35.0	85.0	15.0	100.0
<b>Total</b>	<b>24.4</b>	<b>6.5</b>	<b>30.9</b>	<b>12.4</b>	<b>7.0</b>	<b>19.4</b>	<b>1.3</b>	<b>0.3</b>	<b>1.6</b>	<b>13.8</b>	<b>9.0</b>	<b>22.8</b>	<b>19.2</b>	<b>6.1</b>	<b>25.3</b>	<b>71.2</b>	<b>28.8</b>	<b>100.0</b>

Chart 5: Visitors Arrival by Country of Residence by Purpose of Visit, 2<sup>nd</sup> quarter 2015

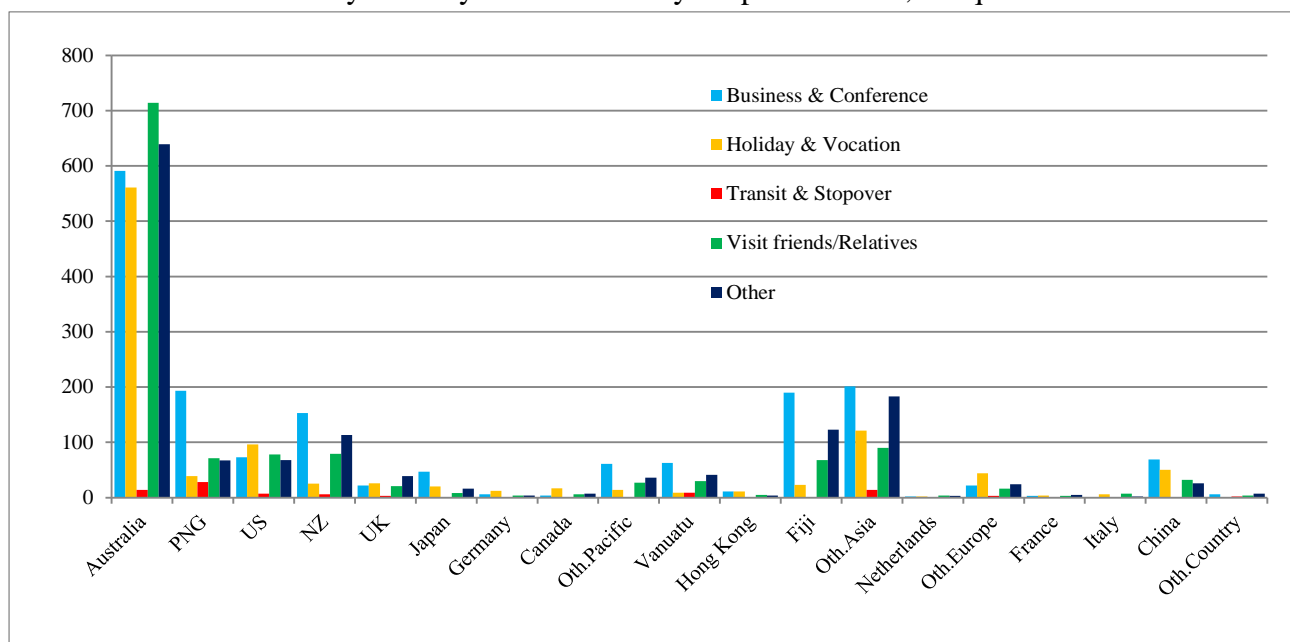


Table 6: Visitor Arrivals by Country of Residence by Age Groups by Sex: 2<sup>nd</sup> Quarter 2015

Country of Usual Residence	Age-Group																		Total	
	0-14		15-24		25-34		35-44		45-54		55-64		65+		Not Stated		M	F		All
	M	F	M	F	M	F	M	F	M	F	M	F	M	F						
Australia	38	33	114	132	193	122	310	139	396	177	372	147	175	72	60	39	1,658	861	2,519	
PNG	2	4	11	6	52	39	88	25	81	12	44	5	5	3	14	7	297	101	398	
US	-	-	7	12	39	13	40	13	40	22	50	22	29	15	14	6	219	103	322	
NZ	-	-	13	9	34	15	46	12	78	20	67	17	29	10	19	7	286	90	376	
UK	-	-	8	8	20	12	11	5	13	4	15	1	6	3	2	3	75	36	111	
Japan	-	-	1	2	10	4	14	2	23	-	19	4	7	2	2	1	76	15	91	
Germany	-	-	-	-	3	5	4	2	5	1	2	-	1	1	2	-	17	9	26	
Canada	-	-	1	-	6	2	2	1	2	1	5	4	5	2	2	1	23	11	34	
Oth.Pacific	-	-	4	-	16	13	24	10	23	9	14	5	8	2	6	5	95	44	139	
Vanuatu	1	1	8	4	23	10	28	8	31	11	10	3	4	1	8	1	113	39	152	
Hong Kong	-	-	1	-	4	2	2	1	9	3	1	4	1	-	2	2	20	12	32	
Fiji	1	4	13	8	78	31	68	35	63	25	39	10	7	5	11	7	280	125	405	
Oth.Asia	2	2	21	8	100	19	139	17	139	18	92	14	20	3	13	2	526	83	609	
Netherlands	-	-	-	-	1	-	-	1	3	-	1	1	3	1	-	-	8	3	11	
Oth.Europe	-	-	5	4	15	7	15	3	17	6	18	5	9	-	3	2	82	27	109	
France	1	-	-	-	2	-	1	1	4	1	3	1	1	-	-	-	12	3	15	
Italy	-	-	2	-	1	1	-	-	8	1	2	-	-	1	-	-	13	3	16	
China	1	-	12	5	45	19	35	7	27	2	9	1	4	1	8	1	141	36	177	
Oth.Country	-	-	3	-	4	-	2	2	4	1	3	-	1	-	-	-	17	3	20	
Total	46	44	224	198	646	314	829	284	966	314	766	244	315	122	166	84	3,958	1,604	5,562	
Percentage																				
Australia	1.5	1.3	4.5	5.2	7.7	4.8	12.3	5.5	15.7	7.0	14.8	5.8	6.9	2.9	2.4	1.5	65.8	34.2	100.0	
PNG	0.5	1.0	2.8	1.5	13.1	9.8	22.1	6.3	20.4	3.0	11.1	1.3	1.3	0.8	3.5	1.8	74.6	25.4	100.0	
US	-	-	2.2	3.7	12.1	4.0	12.4	4.0	12.4	6.8	15.5	6.8	9.0	4.7	4.3	1.9	68.0	32.0	100.0	
NZ	-	-	3.5	2.4	9.0	4.0	12.2	3.2	20.7	5.3	17.8	4.5	7.7	2.7	5.1	1.9	76.1	23.9	100.0	
UK	-	-	7.2	7.2	18.0	10.8	9.9	4.5	11.7	3.6	13.5	0.9	5.4	2.7	1.8	2.7	67.6	32.4	100.0	
Japan	-	-	1.1	2.2	11.0	4.4	15.4	2.2	25.3	-	20.9	4.4	7.7	2.2	2.2	1.1	83.5	16.5	100.0	
Germany	-	-	-	-	11.5	19.2	15.4	7.7	19.2	3.8	7.7	-	3.8	3.8	7.7	-	65.4	34.6	100.0	
Canada	-	-	2.9	-	17.6	5.9	5.9	2.9	5.9	2.9	14.7	11.8	14.7	5.9	5.9	2.9	67.6	32.4	100.0	
Oth.Pacific	-	-	2.9	-	11.5	9.4	17.3	7.2	16.5	6.5	10.1	3.6	5.8	1.4	4.3	3.6	68.3	31.7	100.0	
Vanuatu	0.7	0.7	5.3	2.6	15.1	6.6	18.4	5.3	20.4	7.2	6.6	2.0	2.6	0.7	5.3	0.7	74.3	25.7	100.0	
Hong Kong	-	-	3.1	-	12.5	6.3	6.3	3.1	28.1	9.4	3.1	12.5	3.1	-	6.3	6.3	62.5	37.5	100.0	
Fiji	0.2	1.0	3.2	2.0	19.3	7.7	16.8	8.6	15.6	6.2	9.6	2.5	1.7	1.2	2.7	1.7	69.1	30.9	100.0	
Oth.Asia	0.3	0.3	3.4	1.3	16.4	3.1	22.8	2.8	22.8	3.0	15.1	2.3	3.3	0.5	2.1	0.3	86.4	13.6	100.0	
Netherlands	-	-	-	-	9.1	-	-	9.1	27.3	-	9.1	9.1	27.3	9.1	-	-	72.7	27.3	100.0	
Oth.Europe	-	-	4.6	3.7	13.8	6.4	13.8	2.8	15.6	5.5	16.5	4.6	8.3	-	2.8	1.8	75.2	24.8	100.0	
France	6.7	-	-	-	13.3	-	6.7	6.7	26.7	6.7	20.0	6.7	6.7	-	-	-	80.0	20.0	100.0	
Italy	-	-	12.5	-	6.3	6.3	-	-	50.0	6.3	12.5	-	-	6.3	-	-	81.3	18.8	100.0	
China	0.6	-	6.8	2.8	25.4	10.7	19.8	4.0	15.3	1.1	5.1	0.6	2.3	0.6	4.5	0.6	79.7	20.3	100.0	
Oth.Country	-	-	15.0	-	20.0	-	10.0	10.0	20.0	5.0	15.0	-	5.0	-	-	-	85.0	15.0	100.0	
Total	0.8	0.8	4.0	3.6	11.6	5.6	14.9	5.1	17.4	5.6	13.8	4.4	5.7	2.2	3.0	1.5	71.2	28.8	100.0	

Chart 6: Visitor Arrivals by Age group category by sex, 2<sup>nd</sup> quarter 2015

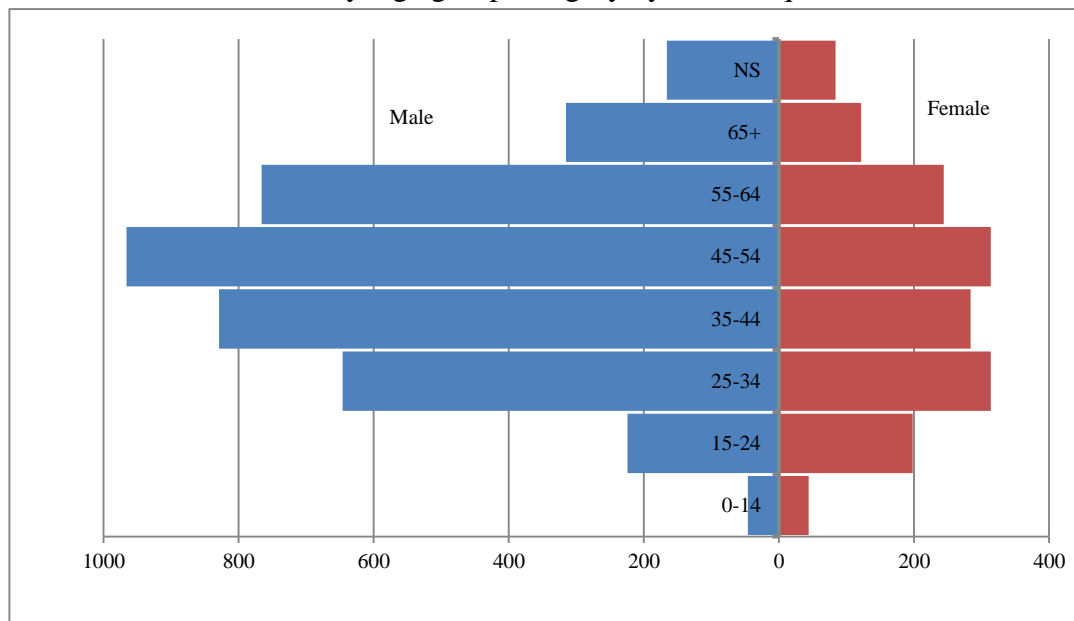


Table 7: Visitor Arrivals by Country of Residence by Occupation and Sex: 2<sup>nd</sup> Quarter 2015

Country of Usual Residence	Professional and Technical		Administration and Managerial		Clerical & Related Work		Sales Worker		Service Worker		Agriculture Forestry Fishery		Production & Related Work		Other		No Work		Total		
	M	F	M	F	M	F	M	F	M	F	M	F	M	F	M	F	M	F	M	F	All
Australia	557	344	219	71	9	10	7	3	49	36	16	2	97	2	574	302	130	91	1,658	861	2,519
PNG	85	42	32	3	12	1	1	-	11	5	-	-	3	-	145	43	8	7	297	101	398
US	74	42	5	4	-	-	1	-	11	5	-	-	4	-	96	36	28	16	219	103	322
NZ	69	21	65	10	1	3	1	-	6	9	4	1	27	-	97	32	16	14	286	90	376
UK	33	18	13	5	1	-	-	-	1	2	-	-	3	-	21	7	3	4	75	36	111
Japan	25	-	7	-	3	-	2	-	-	1	-	-	1	-	35	10	3	4	76	15	91
Germany	7	4	1	1	-	-	1	-	-	-	-	-	-	-	7	4	1	-	17	9	26
Canada	7	1	6	-	-	-	-	-	-	-	-	-	1	1	4	5	5	4	23	11	34
Oth.Pacific	19	11	2	4	6	-	2	-	6	2	1	-	2	-	51	21	6	6	95	44	139
Vanuatu	35	9	6	-	5	3	3	-	3	5	-	1	2	-	54	20	5	1	113	39	152
Hong Kong	3	2	3	1	-	1	-	-	-	1	-	-	-	-	8	5	6	2	20	12	32
Fiji	85	27	37	13	3	1	3	1	7	1	1	-	7	-	131	76	6	6	280	125	405
Oth.Asia	58	16	71	11	10	3	37	3	3	7	10	-	34	1	262	26	41	16	526	83	609
Netherlands	6	-	-	-	-	-	-	-	-	-	-	-	-	-	1	3	1	-	8	3	11
Oth.Europe	29	9	6	6	2	-	-	-	1	1	1	-	4	-	28	9	11	2	82	27	109
France	4	1	-	-	2	1	-	-	-	-	-	-	1	-	3	-	2	1	12	3	15
Italy	7	-	1	-	-	-	-	-	1	1	-	-	-	-	4	2	-	-	13	3	16
China	22	1	34	7	-	-	8	2	2	-	-	1	-	-	47	15	28	10	141	36	177
Oth.Country	5	1	2	-	1	-	-	-	-	1	-	-	-	-	9	1	-	-	17	3	20
Total	1,130	549	510	136	55	23	66	9	101	77	33	5	186	4	1,577	617	300	184	3,958	1,604	5,562
<b>Percentage</b>																					
Australia	22.1	13.7	8.7	2.8	0.4	0.4	0.3	0.1	1.9	1.4	0.6	0.1	3.9	0.1	22.8	12.0	5.2	3.6	65.8	34.2	100.0
PNG	21.4	10.6	8.0	0.8	3.0	0.3	0.3	-	2.8	1.3	-	-	0.8	-	36.4	10.8	2.0	1.8	74.6	25.4	100.0
US	23.0	13.0	1.6	1.2	-	-	0.3	-	3.4	1.6	-	-	1.2	-	29.8	11.2	8.7	5.0	68.0	32.0	100.0
NZ	18.4	5.6	17.3	2.7	0.3	0.8	0.3	-	1.6	2.4	1.1	0.3	7.2	-	25.8	8.5	4.3	3.7	76.1	23.9	100.0
UK	29.7	16.2	11.7	4.5	0.9	-	-	-	0.9	1.8	-	-	2.7	-	18.9	6.3	2.7	3.6	67.6	32.4	100.0
Japan	27.5	-	7.7	-	3.3	-	2.2	-	-	1.1	-	-	1.1	-	38.5	11.0	3.3	4.4	83.5	16.5	100.0
Germany	26.9	15.4	3.8	3.8	-	-	3.8	-	-	-	-	-	-	-	26.9	15.4	3.8	-	65.4	34.6	100.0
Canada	20.6	2.9	17.6	-	-	-	-	-	-	-	-	-	2.9	2.9	11.8	14.7	14.7	11.8	67.6	32.4	100.0
Oth.Pacific	13.7	7.9	1.4	2.9	4.3	-	1.4	-	4.3	1.4	0.7	-	1.4	-	36.7	15.1	4.3	4.3	68.3	31.7	100.0
Vanuatu	23.0	5.9	3.9	-	3.3	2.0	2.0	-	2.0	3.3	-	0.7	1.3	-	35.5	13.2	3.3	0.7	74.3	25.7	100.0
Hong Kong	9.4	6.3	9.4	3.1	-	3.1	-	-	-	3.1	-	-	-	-	25.0	15.6	18.8	6.3	62.5	37.5	100.0
Fiji	21.0	6.7	9.1	3.2	0.7	0.2	0.7	0.2	1.7	0.2	0.2	-	1.7	-	32.3	18.8	1.5	1.5	69.1	30.9	100.0
Oth.Asia	9.5	2.6	11.7	1.8	1.6	0.5	6.1	0.5	0.5	1.1	1.6	-	5.6	0.2	43.0	4.3	6.7	2.6	86.4	13.6	100.0
Netherlands	54.5	-	-	-	-	-	-	-	-	-	-	-	-	-	9.1	27.3	9.1	-	72.7	27.3	100.0
Oth.Europe	26.6	8.3	5.5	5.5	1.8	-	-	-	0.9	0.9	0.9	-	3.7	-	25.7	8.3	10.1	1.8	75.2	24.8	100.0
France	26.7	6.7	-	-	13.3	6.7	-	-	-	-	-	-	6.7	-	20.0	-	13.3	6.7	80.0	20.0	100.0
Italy	43.8	-	6.3	-	-	-	-	-	6.3	6.3	-	-	-	-	25.0	12.5	0.0	-	81.3	18.8	100.0
China	12.4	0.6	19.2	4.0	-	-	4.5	1.1	1.1	-	-	0.6	-	-	26.6	8.5	15.8	5.6	79.7	20.3	100.0
Oth.Country	25.0	5.0	10.0	-	5.0	-	-	-	-	5.0	-	-	-	-	45.0	5.0	-	-	85.0	15.0	100.0
Total	20.3	9.9	9.2	2.4	1.0	0.4	1.2	0.2	1.8	1.4	0.6	0.1	3.3	0.1	28.4	11.1	5.4	3.3	71.2	28.8	100.0

Chart 7: Visitors Arrival by occupation by sex, 2<sup>nd</sup> quarter 2015

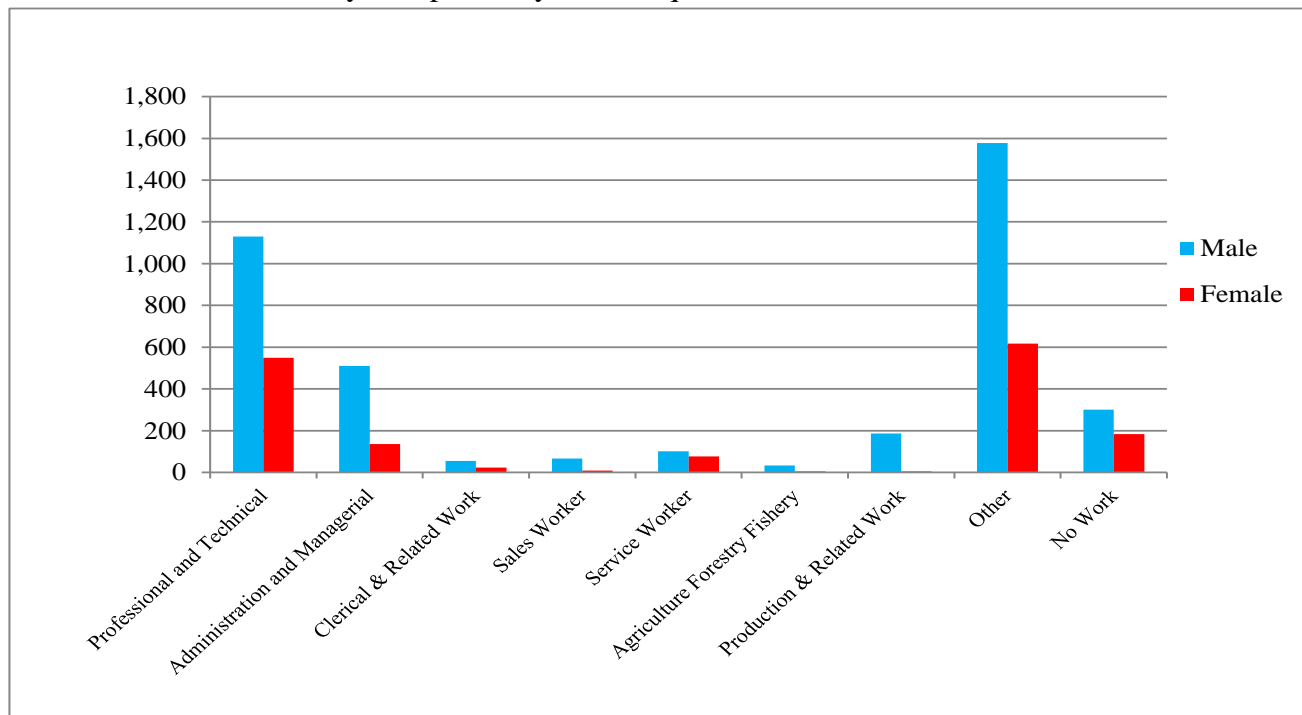
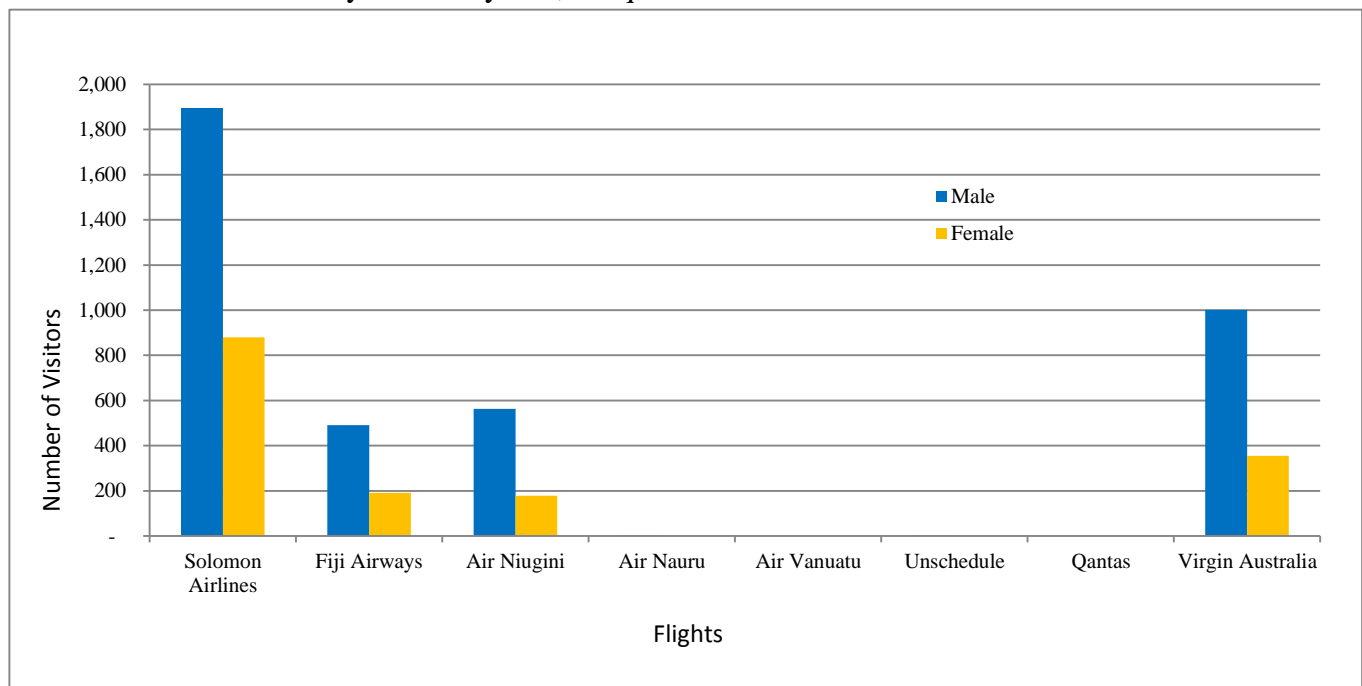


Table 8: Visitor Arrivals by Country of residence by Carrier by Sex: 2<sup>nd</sup> Quarter 2015

Country of Usual Residence	Solomon Airlines		Fiji Airways		Air Niugini		Air Nauru		Air Vanuatu		Unschedule		Qantas		Virgin Australia		Total		
	M	F	M	F	M	F	M	F	M	F	M	F	M	F	M	F	M	F	All
	Australia	993	595	19	11	27	10	1	-	-	-	-	-	-	618	245	1,658	861	2,519
PNG	27	7	8	2	254	92	-	-	-	-	2	-	-	6	-	297	101	398	
US	78	39	90	42	15	4	-	-	-	-	-	-	-	36	18	219	103	322	
NZ	105	44	23	7	6	2	1	-	-	-	-	-	-	151	37	286	90	376	
UK	44	14	2	2	5	1	-	-	-	-	-	-	-	24	19	75	36	111	
Japan	31	6	3	-	32	7	-	-	-	-	-	-	-	10	2	76	15	91	
Germany	7	5	2	-	2	3	-	-	-	-	-	-	-	6	1	17	9	26	
Canada	12	2	7	6	1	1	-	-	-	-	-	-	-	3	2	23	11	34	
Oth.Pacific	51	23	34	16	5	2	-	-	-	-	-	-	-	5	3	95	44	139	
Vanuatu	56	22	49	14	7	2	1	-	-	-	-	-	-	-	1	113	39	152	
Hong Kong	8	8	3	1	8	3	-	-	-	-	-	-	-	1	-	20	12	32	
Fiji	95	49	165	67	12	5	-	-	-	-	1	-	-	7	4	280	125	405	
Oth.Asia	308	51	25	6	97	16	-	-	-	-	-	-	-	96	10	526	83	609	
Netherlands	3	3	1	-	1	-	-	-	-	-	-	-	-	3	-	8	3	11	
Oth.Europe	43	9	7	7	9	2	-	-	-	-	-	-	-	23	9	82	27	109	
France	8	1	3	-	-	1	-	-	-	-	-	-	-	1	1	12	3	15	
Italy	4	-	3	2	3	-	-	-	-	-	-	-	-	3	1	13	3	16	
China	13	1	46	7	76	26	-	-	-	-	1	-	-	5	2	141	36	177	
Oth.Country	10	1	1	1	3	1	-	-	-	-	-	-	-	3	-	17	3	20	
<b>Total</b>	<b>1,896</b>	<b>880</b>	<b>491</b>	<b>191</b>	<b>563</b>	<b>178</b>	<b>3</b>	<b>-</b>	<b>-</b>	<b>-</b>	<b>4</b>	<b>-</b>	<b>-</b>	<b>1,001</b>	<b>355</b>	<b>3,958</b>	<b>1,604</b>	<b>5,562</b>	
<b>Percentage</b>																			
Australia	39.4	23.6	0.8	0.4	1.1	0.4	-	-	-	-	-	-	-	24.5	9.7	65.8	34.2	100.0	
PNG	6.8	1.8	2.0	0.5	63.8	23.1	-	-	-	-	0.5	-	-	1.5	-	74.6	25.4	100.0	
US	24.2	12.1	28.0	13.0	4.7	1.2	-	-	-	-	-	-	-	11.2	5.6	68.0	32.0	100.0	
NZ	27.9	11.7	6.1	1.9	1.6	0.5	0.3	-	-	-	-	-	-	40.2	9.8	76.1	23.9	100.0	
UK	39.6	12.6	1.8	1.8	4.5	0.9	-	-	-	-	-	-	-	21.6	17.1	67.6	32.4	100.0	
Japan	34.1	6.6	3.3	-	35.2	7.7	-	-	-	-	-	-	-	11.0	2.2	83.5	16.5	100.0	
Germany	26.9	19.2	7.7	-	7.7	11.5	-	-	-	-	-	-	-	23.1	3.8	65.4	34.6	100.0	
Canada	35.3	5.9	20.6	17.6	2.9	2.9	-	-	-	-	-	-	-	8.8	5.9	67.6	32.4	100.0	
Oth.Pacific	36.7	16.5	24.5	11.5	3.6	1.4	-	-	-	-	-	-	-	3.6	2.2	68.3	31.7	100.0	
Vanuatu	36.8	14.5	32.2	9.2	4.6	1.3	0.7	-	-	-	-	-	-	-	0.7	74.3	25.7	100.0	
Hong Kong	25.0	25.0	9.4	3.1	25.0	9.4	-	-	-	-	-	-	-	3.1	-	62.5	37.5	100.0	
Fiji	23.5	12.1	40.7	16.5	3.0	1.2	-	-	-	-	0.2	-	-	1.7	1.0	69.1	30.9	100.0	
Oth.Asia	50.6	8.4	4.1	1.0	15.9	2.6	-	-	-	-	-	-	-	15.8	1.6	86.4	13.6	100.0	
Netherlands	27.3	27.3	9.1	-	9.1	0.0	-	-	-	-	-	-	-	27.3	-	72.7	27.3	100.0	
Oth.Europe	39.4	8.3	6.4	6.4	8.3	1.8	-	-	-	-	-	-	-	21.1	8.3	75.2	24.8	100.0	
France	53.3	6.7	20.0	-	-	6.7	-	-	-	-	-	-	-	6.7	6.7	80.0	20.0	100.0	
Italy	25.0	-	18.8	12.5	18.8	-	-	-	-	-	-	-	-	18.8	6.3	81.3	18.8	100.0	
China	7.3	0.6	26.0	4.0	42.9	14.7	-	-	-	-	0.6	-	-	2.8	1.1	79.7	20.3	100.0	
Oth.Country	50.0	5.0	5.0	5.0	15.0	5.0	-	-	-	-	-	-	-	15.0	-	85.0	15.0	100.0	
<b>Total</b>	<b>34.1</b>	<b>15.8</b>	<b>8.8</b>	<b>3.4</b>	<b>10.1</b>	<b>3.2</b>	<b>0.1</b>	<b>-</b>	<b>-</b>	<b>-</b>	<b>0.1</b>	<b>-</b>	<b>-</b>	<b>18.0</b>	<b>6.4</b>	<b>71.2</b>	<b>28.8</b>	<b>100.0</b>	

Chart 8: Visitor Arrivals by Carrier by Sex, 2<sup>nd</sup> quarter 2015



## Appendix 1

### Concepts and Definitions

Persons entering Solomon Islands classify themselves into three (3) categories; returning resident, intending resident, and visitor. The concepts and definitions of the various categories are as follows:

#### (i) *Returning residents*

- Solomon Islanders and non-Solomon Islanders who have left the country and are returning to continue their residence.
- Non Solomon Islanders includes resident permit holders and Diplomatic officials, and their immediate family members. This may also includes legal or official arrangements that fall out side of the above.

#### (ii) *Intending residents*

- Non-Solomon Islander who wish to take up residence in Solomon Islands.

#### (iii) *Visitors*

- Any traveller who is not a Solomon Islander and who purposely spend less time – at most a period of 120 days<sup>2</sup>, in the country and with the intention and purpose of visiting.
- *Tourist*
  - Visitors who further classify themselves stating their visit are purposely for '*holiday and vacation*'. This exclude, tourist arrivals by cruise ships.
  - Wife accompanying husband on business purpose is a private tourist unless also working.
  - *World Tourism Organization WTO definition of Tourism:*  
*It comprises the activities of persons travelling to and staying in places outside their usual environment for not more than one consecutive year for leisure, business and other purposes not related to the exercise of an activity remunerated from within the place visited*<sup>3</sup>.

#### ( iv) *Markets*

- *Country of Usual Residence*

---

<sup>2</sup> Solomon Islands 1993 Statistical Yearbook.

<sup>3</sup> Dimensions of Hospitality, Study guide 1. p17

Appendix 2

Table 9: Intending Resident Arrivals by Country of Residence by Occupation and Sex: 2<sup>nd</sup> Quarter 2015

Country of Usual Residence	Professional and Technical		Administration and Managerial		Clerical & Related Work		Sales Worker		Service Worker		Agriculture Forestry Fishery		Production & Related Work		Other		No Work		Total		
	M	F	M	F	M	F	M	F	M	F	M	F	M	F	M	F	M	F	M	F	All
Australia	20	11	5	9	1	2	-	-	23	7	1	-	1	-	24	27	9	9	84	65	149
PNG	7	2	4	-	-	-	-	-	1	-	-	-	1	-	4	1	1	1	18	4	22
US	2	1	-	-	-	-	-	-	2	-	-	-	-	-	3	-	-	-	7	1	8
NZ	7	5	4	2	1	-	-	-	6	3	-	-	-	-	3	4	-	2	21	16	37
UK	-	-	1	-	-	-	-	-	-	-	-	-	-	-	2	-	-	-	3	-	3
Japan	2	-	-	-	-	-	-	-	-	-	-	-	-	-	6	-	1	1	9	1	10
Germany	-	-	1	-	-	-	-	-	-	-	-	-	-	-	-	-	-	-	1	-	1
Canada	-	-	-	-	-	-	-	-	-	-	-	-	-	-	-	1	-	-	-	1	1
Oth.Pacific	2	1	-	-	-	-	-	-	8	-	-	-	-	-	1	1	-	-	11	2	13
Vanuatu	2	-	1	-	-	-	-	-	2	-	-	-	-	-	3	2	2	1	10	3	13
Hong Kong	-	-	-	-	-	-	-	-	-	-	-	-	-	-	-	1	-	1	-	2	2
Fiji	5	6	8	-	-	-	-	-	1	1	-	-	-	-	12	4	4	2	30	13	43
Oth.Asia	29	12	56	8	2	1	14	-	4	1	21	3	65	1	247	15	52	4	490	45	535
Netherlands	-	-	-	-	-	-	-	-	-	-	-	-	-	-	-	-	-	-	-	-	-
Oth.Europe	2	2	-	1	-	-	-	-	-	-	-	-	1	-	1	2	1	-	5	5	10
France	-	-	-	-	-	-	-	-	-	-	-	-	-	-	1	-	-	-	1	-	1
Italy	-	-	-	-	-	-	-	-	-	-	-	-	-	-	-	-	-	-	-	-	-
China	5	5	27	7	-	2	7	2	9	5	9	2	-	-	38	4	36	14	131	41	172
Oth.Country	2	1	-	-	-	-	1	-	-	-	-	-	-	-	1	1	-	-	4	2	6
<b>Total</b>	<b>85</b>	<b>46</b>	<b>107</b>	<b>27</b>	<b>4</b>	<b>5</b>	<b>22</b>	<b>2</b>	<b>56</b>	<b>17</b>	<b>31</b>	<b>5</b>	<b>68</b>	<b>1</b>	<b>346</b>	<b>63</b>	<b>106</b>	<b>35</b>	<b>825</b>	<b>201</b>	<b>1,026</b>
	<b>Percentage</b>																				
Australia	13.4	7.4	3.4	6.0	0.7	1.3	-	-	15.4	4.7	0.7	-	0.7	-	16.1	18.1	6.0	6.0	56.4	43.6	100.0
PNG	31.8	9.1	18.2	-	-	-	-	-	4.5	-	-	-	4.5	-	18.2	4.5	4.5	4.5	81.8	18.2	100.0
US	25.0	12.5	-	-	-	-	-	-	25.0	-	-	-	-	-	37.5	0.0	-	-	87.5	12.5	100.0
NZ	18.9	13.5	10.8	5.4	2.7	-	-	-	16.2	8.1	-	-	-	-	8.1	10.8	-	5.4	56.8	43.2	100.0
UK	-	-	33.3	-	-	-	-	-	-	-	-	-	-	-	66.7	-	-	-	100.0	-	100.0
Japan	20.0	-	-	-	-	-	-	-	-	-	-	-	-	-	60.0	-	10.0	10.0	90.0	10.0	100.0
Germany	-	-	100.0	-	-	-	-	-	-	-	-	-	-	-	-	-	-	-	100.0	-	100.0
Canada	-	-	-	-	-	-	-	-	-	-	-	-	-	-	-	100.0	-	-	-	100.0	100.0
Oth.Pacific	15.4	7.7	-	-	-	-	-	-	61.5	-	-	-	-	-	7.7	7.7	-	-	84.6	15.4	100.0
Vanuatu	15.4	-	7.7	-	-	-	-	-	15.4	-	-	-	-	-	23.1	15.4	15.4	7.7	76.9	23.1	100.0
Hong Kong	-	-	-	-	-	-	-	-	-	-	-	-	-	-	-	50.0	-	50.0	-	100.0	100.0
Fiji	11.6	14.0	18.6	-	-	-	-	-	2.3	2.3	-	-	-	-	27.9	9.3	9.3	4.7	69.8	30.2	100.0
Oth.Asia	5.4	2.2	10.5	1.5	0.4	0.2	2.6	-	0.7	0.2	3.9	0.6	12.1	0.2	46.2	2.8	9.7	0.7	91.6	8.4	100.0
Netherlands	-	-	-	-	-	-	-	-	-	-	-	-	-	-	-	-	-	-	-	-	-
Oth.Europe	20.0	20.0	-	10.0	-	-	-	-	-	-	-	-	10.0	-	10.0	20.0	10.0	-	50.0	50.0	100.0
France	-	-	-	-	-	-	-	-	-	-	-	-	-	-	100.0	-	-	-	100.0	-	100.0
Italy	-	-	-	-	-	-	-	-	-	-	-	-	-	-	-	-	-	-	-	-	-
China	2.9	2.9	15.7	4.1	-	1.2	4.1	1.2	5.2	2.9	5.2	1.2	-	-	22.1	2.3	20.9	8.1	76.2	23.8	100.0
Oth.Country	33.3	16.7	-	-	-	-	16.7	-	-	-	-	-	-	-	16.7	16.7	-	-	66.7	33.3	100.0
<b>Total</b>	<b>8.3</b>	<b>4.5</b>	<b>10.4</b>	<b>2.6</b>	<b>0.4</b>	<b>0.5</b>	<b>2.1</b>	<b>0.2</b>	<b>5.5</b>	<b>1.7</b>	<b>3.0</b>	<b>0.5</b>	<b>6.6</b>	<b>0.1</b>	<b>33.7</b>	<b>6.1</b>	<b>10.3</b>	<b>3.4</b>	<b>80.4</b>	<b>19.6</b>	<b>100.0</b>

Table 10: Intending Resident Arrivals by Country of Residence by Age Groups by Sex: 2<sup>nd</sup> Quarter 2015

Country of Usual Residence	Age-Group																		Total		
	0-14		15-24		25-34		35-44		45-54		55-64		65+		Not Stated		M	F	All		
	M	F	M	F	M	F	M	F	M	F	M	F	M	F							
Australia	5	3	2	1	13	12	18	19	23	14	9	6	4	-	10	10	84	65	149		
PNG	3	1	1	1	2	-	4	-	4	1	1	-	1	-	2	1	18	4	22		
US	-	-	1	-	1	-	3	1	1	-	-	-	-	-	1	-	7	1	8		
NZ	1	1	2	-	2	4	2	2	5	4	6	2	2	1	1	2	21	16	37		
UK	-	-	-	-	-	-	-	-	2	-	-	-	1	-	-	-	3	-	3		
Japan	-	-	-	1	2	-	1	-	3	-	2	-	1	-	-	-	9	1	10		
Germany	-	-	-	-	-	-	-	-	-	-	1	-	-	-	-	-	1	-	1		
Canada	-	-	-	-	-	1	-	-	-	-	-	-	-	-	-	-	-	1	1		
Oth.Pacific	-	-	1	-	4	-	3	1	3	1	-	-	-	-	-	-	11	2	13		
Vanuatu	-	-	2	1	2	1	1	1	2	-	1	-	-	-	2	-	10	3	13		
Hong Kong	-	-	-	2	-	-	-	-	-	-	-	-	-	-	-	-	-	2	2		
Fiji	-	1	3	3	12	1	5	5	2	1	3	1	1	-	4	1	30	13	43		
Oth.Asia	1	2	28	6	101	13	161	12	119	5	47	3	7	-	26	4	490	45	535		
Netherlands	-	-	-	-	-	-	-	-	-	-	-	-	-	-	-	-	-	-	-		
Oth.Europe	-	-	-	-	2	3	2	-	2	-	1	-	1	-	-	-	5	5	10		
France	-	-	-	-	-	-	-	-	-	-	1	-	-	-	-	-	1	-	1		
Italy	-	-	-	-	-	-	-	-	-	-	-	-	-	-	-	-	-	-	-		
China	5	-	32	8	38	23	29	5	15	1	3	2	1	-	8	2	131	41	172		
Oth.Country	-	-	-	-	1	1	1	1	1	-	1	-	-	-	-	-	4	2	6		
<b>Total</b>	<b>15</b>	<b>8</b>	<b>72</b>	<b>23</b>	<b>180</b>	<b>59</b>	<b>230</b>	<b>47</b>	<b>180</b>	<b>29</b>	<b>75</b>	<b>14</b>	<b>19</b>	<b>1</b>	<b>54</b>	<b>20</b>	<b>825</b>	<b>201</b>	<b>1,026</b>		
	<b>Percentage</b>																				
Australia	3	2	1	1	9	8	12	13	15	9	6	4	3	-	7	7	56	44	100		
PNG	14	5	5	5	9	-	18	-	18	5	5	-	5	-	9	5	82	18	100		
US	-	-	13	-	13	-	38	13	13	-	-	-	-	-	13	-	88	13	100		
NZ	3	3	5	-	5	11	5	5	14	11	16	5	5	3	3	5	57	43	100		
UK	-	-	-	-	-	-	-	-	67	-	-	-	33	-	-	-	100	-	100		
Japan	-	-	-	10	20	-	10	-	30	-	20	-	10	-	-	-	90	10	100		
Germany	-	-	-	-	-	-	-	-	-	-	100	-	-	-	-	-	100	-	100		
Canada	-	-	-	-	-	100	-	-	-	-	-	-	-	-	-	-	-	100	100		
Oth.Pacific	-	-	8	-	31	-	23	8	23	8	-	-	-	-	-	-	85	15	100		
Vanuatu	-	-	15	8	15	8	8	8	15	-	8	-	-	-	15	-	77	23	100		
Hong Kong	-	-	-	100	-	-	-	-	-	-	-	-	-	-	-	-	-	100	100		
Fiji	-	2	7	7	28	2	12	12	5	2	7	2	2	-	9	2	70	30	100		
Oth.Asia	-	-	5	1	19	2	30	2	22	1	9	1	1	-	5	1	92	8	100		
Netherlands	-	-	-	-	-	-	-	-	-	-	-	-	-	-	-	-	-	-	-		
Oth.Europe	-	-	-	-	20	30	20	-	-	20	-	-	10	-	-	-	50	50	100		
France	-	-	-	-	-	-	-	-	-	-	100	-	-	-	-	-	100	-	100		
Italy	-	-	-	-	-	-	-	-	-	-	-	-	-	-	-	-	-	-	-		
China	3	-	19	5	22	13	17	3	9	1	2	1	1	-	5	1	76	24	100		
Oth.Country	-	-	-	-	17	17	17	17	17	-	17	-	-	-	-	-	67	33	100		
<b>Total</b>	<b>1</b>	<b>1</b>	<b>7</b>	<b>2</b>	<b>18</b>	<b>6</b>	<b>22</b>	<b>5</b>	<b>18</b>	<b>3</b>	<b>7</b>	<b>1</b>	<b>2</b>	<b>-</b>	<b>5</b>	<b>2</b>	<b>80</b>	<b>20</b>	<b>100</b>		



Table 11: Returning Resident Arrivals by Country of Residence by Age Groups by Sex: 2<sup>nd</sup> Quarter 2015

Country of Usual Residence	Age-Group																		Total		
	0-14		15-24		25-34		35-44		45-54		55-64		65+		Not Stated		M	F	All		
	M	F	M	F	M	F	M	F	M	F	M	F	M	F	M	F	M	F	All		
Australia	-	-	-	-	-	-	-	-	-	-	-	-	-	-	-	-	-	-	-		
PNG	-	-	-	-	-	-	-	-	-	-	-	-	-	-	-	-	-	-	-		
US	-	-	-	-	-	-	-	-	-	-	-	-	-	-	-	-	-	-	-		
NZ	-	-	-	-	-	-	-	1	-	-	-	-	-	-	-	-	-	1	1		
UK	-	-	-	-	-	-	-	-	-	-	-	-	-	-	-	-	-	-	-		
Japan	-	-	2	-	2	1	2	1	3	-	-	-	1	-	-	-	10	2	12		
Germany	-	-	-	-	-	-	-	-	-	-	-	-	-	-	-	-	-	-	-		
Canada	-	-	-	-	-	-	-	-	-	-	-	-	-	-	-	-	-	-	-		
Oth.Pacific	-	-	-	-	-	-	1	-	-	-	-	-	-	-	-	-	1	-	1		
Vanuatu	-	-	-	-	-	-	-	-	-	-	-	-	-	-	-	-	-	-	-		
Hong Kong	-	-	-	-	-	-	-	-	-	-	-	-	-	-	-	-	-	-	-		
Fiji	-	-	-	-	-	-	-	-	-	-	-	-	-	-	-	-	-	-	-		
Oth.Asia	-	-	-	-	1	-	-	-	2	-	-	-	-	-	-	-	3	-	3		
Netherlands	-	-	-	-	-	-	-	-	-	-	-	-	-	-	-	-	-	-	-		
Oth.Europe	-	-	-	-	-	-	-	-	-	-	-	-	-	-	-	-	-	-	-		
France	-	-	-	-	-	-	-	-	-	-	-	-	-	-	-	-	-	-	-		
Italy	-	-	-	-	-	-	-	-	-	-	-	-	-	-	-	-	-	-	-		
China	-	-	-	-	-	-	-	-	-	-	-	-	-	-	-	-	-	-	-		
Oth.Country	-	-	-	-	-	-	-	-	-	-	-	-	-	-	-	-	-	-	-		
Solomon Is.	73	67	237	192	660	371	678	390	535	281	308	92	93	16	186	126	2,770	1,535	4,305		
Total	73	67	239	192	663	372	681	392	540	281	308	92	94	16	186	126	2,784	1,538	4,322		
<u>Percentage</u>																					
Australia	-	-	-	-	-	-	-	-	-	-	-	-	-	-	-	-	-	-	-		
PNG	-	-	-	-	-	-	-	-	-	-	-	-	-	-	-	-	-	-	-		
US	-	-	-	-	-	-	-	-	-	-	-	-	-	-	-	-	-	-	-		
NZ	-	-	-	-	-	-	-	100.0	-	-	-	-	-	-	-	-	-	100.0	100.0		
UK	-	-	-	-	-	-	-	-	-	-	-	-	-	-	-	-	-	-	-		
Japan	-	-	16.7	-	16.7	8.3	16.7	8.3	25.0	-	-	-	8.3	-	-	-	83.3	16.7	100.0		
Germany	-	-	-	-	-	-	-	-	-	-	-	-	-	-	-	-	-	-	-		
Canada	-	-	-	-	-	-	-	-	-	-	-	-	-	-	-	-	-	-	-		
Oth.Pacific	-	-	-	-	-	-	100.0	-	-	-	-	-	-	-	-	-	100.0	-	100.0		
Vanuatu	-	-	-	-	-	-	-	-	-	-	-	-	-	-	-	-	-	-	-		
Hong Kong	-	-	-	-	-	-	-	-	-	-	-	-	-	-	-	-	-	-	-		
Fiji	-	-	-	-	-	-	-	-	-	-	-	-	-	-	-	-	-	-	-		
Oth.Asia	-	-	-	-	33.3	-	-	-	66.7	-	-	-	-	-	-	-	100.0	-	100.0		
Netherlands	-	-	-	-	-	-	-	-	-	-	-	-	-	-	-	-	-	-	-		
Oth.Europe	-	-	-	-	-	-	-	-	-	-	-	-	-	-	-	-	-	-	-		
France	-	-	-	-	-	-	-	-	-	-	-	-	-	-	-	-	-	-	-		
Italy	-	-	-	-	-	-	-	-	-	-	-	-	-	-	-	-	-	-	-		
China	-	-	-	-	-	-	-	-	-	-	-	-	-	-	-	-	-	-	-		
Oth.Country	-	-	-	-	-	-	-	-	-	-	-	-	-	-	-	-	-	-	-		
Solomon Is.	1.7	1.6	5.5	4.5	15.3	8.6	15.7	9.1	12.4	6.5	7.2	2.1	2.2	0.4	4.3	2.9	64.3	35.7	100.0		
Total	1.7	1.6	5.5	4.4	15.3	8.6	15.8	9.1	12.5	6.5	7.1	2.1	2.2	0.4	4.3	2.9	64.4	35.6	100.0		

Table 12: Returning Resident Arrivals by Country of Residence by Occupation and Sex: 2<sup>nd</sup> Quarter 2015

Country of Usual Residence	Professional and Technical		Administration and Managerial		Clerical & Related Work		Sales Worker		Service Worker		Agriculture Forestry Fishery		Production & Related Work		Other		No Work		Total		
	M	F	M	F	M	F	M	F	M	F	M	F	M	F	M	F	M	F	M	F	All
Australia	-	-	-	-	-	-	-	-	-	-	-	-	-	-	-	-	-	-	-	-	-
PNG	-	-	-	-	-	-	-	-	-	-	-	-	-	-	-	-	-	-	-	-	-
US	-	-	-	-	-	-	-	-	-	-	-	-	-	-	-	-	-	-	-	-	-
NZ	-	1	-	-	-	-	-	-	-	-	-	-	-	-	-	-	-	-	-	1	1
UK	-	-	-	-	-	-	-	-	-	-	-	-	-	-	-	-	-	-	-	-	-
Japan	3	-	-	-	-	-	-	-	-	1	1	-	-	-	4	1	2	-	10	2	12
Germany	-	-	-	-	-	-	-	-	-	-	-	-	-	-	-	-	-	-	-	-	-
Canada	-	-	-	-	-	-	-	-	-	-	-	-	-	-	-	-	-	-	-	-	-
Oth.Pacific	-	-	-	-	-	-	-	-	1	-	-	-	-	-	-	-	-	-	1	-	1
Vanuatu	-	-	-	-	-	-	-	-	-	-	-	-	-	-	-	-	-	-	-	-	-
Hong Kong	-	-	-	-	-	-	-	-	-	-	-	-	-	-	-	-	-	-	-	-	-
Fiji	-	-	-	-	-	-	-	-	-	-	-	-	-	-	-	-	-	-	-	-	-
Oth.Asia	-	-	-	-	-	-	-	-	-	-	-	-	-	-	3	-	-	-	3	-	3
Netherlands	-	-	-	-	-	-	-	-	-	-	-	-	-	-	-	-	-	-	-	-	-
Oth.Europe	-	-	-	-	-	-	-	-	-	-	-	-	-	-	-	-	-	-	-	-	-
France	-	-	-	-	-	-	-	-	-	-	-	-	-	-	-	-	-	-	-	-	-
Italy	-	-	-	-	-	-	-	-	-	-	-	-	-	-	-	-	-	-	-	-	-
China	-	-	-	-	-	-	-	-	-	-	-	-	-	-	-	-	-	-	-	-	-
Oth.Country	-	-	-	-	-	-	-	-	-	-	-	-	-	-	-	-	-	-	-	-	-
Solomon Is.	849	481	296	113	26	29	46	8	63	112	60	6	68	3	1,131	623	231	160	2,770	1,535	4,305
Total	852	482	296	113	26	29	46	8	64	113	61	6	68	3	1,138	624	233	160	2,784	1,538	4,322
Percentage																					
Australia	-	-	-	-	-	-	-	-	-	-	-	-	-	-	-	-	-	-	-	-	-
PNG	-	-	-	-	-	-	-	-	-	-	-	-	-	-	-	-	-	-	-	-	-
US	-	-	-	-	-	-	-	-	-	-	-	-	-	-	-	-	-	-	-	-	-
NZ	-	100.0	-	-	-	-	-	-	-	-	-	-	-	-	-	-	-	-	-	100.0	100.0
UK	-	-	-	-	-	-	-	-	-	-	-	-	-	-	-	-	-	-	-	-	-
Japan	25.0	-	-	-	-	-	-	-	-	8.3	8.3	-	-	-	33.3	8.3	16.7	-	83.3	16.7	100.0
Germany	-	-	-	-	-	-	-	-	-	-	-	-	-	-	-	-	-	-	-	-	-
Canada	-	-	-	-	-	-	-	-	-	-	-	-	-	-	-	-	-	-	-	-	-
Oth.Pacific	-	-	-	-	-	-	-	-	100.0	-	-	-	-	-	-	-	-	-	100.0	-	100.0
Vanuatu	-	-	-	-	-	-	-	-	-	-	-	-	-	-	-	-	-	-	-	-	-
Hong Kong	-	-	-	-	-	-	-	-	-	-	-	-	-	-	-	-	-	-	-	-	-
Fiji	-	-	-	-	-	-	-	-	-	-	-	-	-	-	-	-	-	-	-	-	-
Oth.Asia	-	-	-	-	-	-	-	-	-	-	-	-	-	-	100.0	-	-	-	100.0	-	100.0
Netherlands	-	-	-	-	-	-	-	-	-	-	-	-	-	-	-	-	-	-	-	-	-
Oth.Europe	-	-	-	-	-	-	-	-	-	-	-	-	-	-	-	-	-	-	-	-	-
France	-	-	-	-	-	-	-	-	-	-	-	-	-	-	-	-	-	-	-	-	-
Italy	-	-	-	-	-	-	-	-	-	-	-	-	-	-	-	-	-	-	-	-	-
China	-	-	-	-	-	-	-	-	-	-	-	-	-	-	-	-	-	-	-	-	-
Oth.Country	-	-	-	-	-	-	-	-	-	-	-	-	-	-	-	-	-	-	-	-	-
Solomon Is.	19.7	11.2	6.9	2.6	0.6	0.7	1.1	0.2	1.5	2.6	1.4	0.1	1.6	0.1	26.3	14.5	5.4	3.7	64.3	35.7	100.0
Total	19.7	11.2	6.8	2.6	0.6	0.7	1.1	0.2	1.5	2.6	1.4	0.1	1.6	0.1	26.3	14.4	5.4	3.7	64.4	35.6	100.0