



**Solomon Islands Government**

**Statistical Bulletin: No: 11/2017**

**VISITOR STATISTICS**

(Second Quarter 2017)

**Solomon Islands National Statistics Office**

**Ministry of Finance**

**Honiara**

## TABLE OF CONTENTS

Introduction .....	3
COMMENTARY OF RESULTS .....	5
<i>International Arrivals</i> .....	5
<i>Arrivals by Country of Residence</i> .....	5
<i>Visitor by Month</i> .....	5
<i>Tourists</i> .....	5
<i>Visitors by Purpose of Visit</i> .....	5
<i>Visitor by Age Group</i> .....	5
<i>Visitor by Occupation:</i> .....	5
<i>Visitor by Carrier</i> .....	5

### ***Charts***

Chart 1: Arrivals by Category, 2 <sup>nd</sup> Quarter 2017.....	6
Chart 2: Visitor Arrivals by Country of Residence by quarter: 2 <sup>nd</sup> Quarter 2017.....	7
Chart 3: Visitor Arrivals by Month, 2014 to 2 <sup>nd</sup> Quarter 2017 .....	8
Chart 4: Tourist Arrivals by Country of Residence, 2 <sup>nd</sup> Quarter 2017.....	9
Chart 5: Visitor Arrivals by Country of Residence by Purpose of Visit, 2 <sup>nd</sup> Quarter 2017.....	10
Chart 6: Visitor Arrivals by Age group category by sex, 2 <sup>nd</sup> Quarter 2017.....	11
Chart 7: Visitor Arrivals by Occupation by sex, 2 <sup>nd</sup> Quarter 2017.....	12
Chart 8: Visitor Arrivals by Carrier by sex, 2 <sup>nd</sup> Quarter 2017.....	13

### ***Tables***

Table 1: Total Arrivals Classified by Purpose of Travel by Sex by Year by Quarter: 2 <sup>nd</sup> Quarter 2017 .....	6
Table 2: Visitors Arrivals by Country of Residence by Year by Quarter: 2 <sup>nd</sup> Quarter 2017.....	7
Table 3: Visitors Arrivals by Month: 2007 to 2 <sup>nd</sup> Quarter 2017.....	8
Table 4: Visitors Classified as Tourists by Country of Residence by Year, Quarter and Average Length..... of Stay: 2 <sup>nd</sup> quarter 2015 to 2 <sup>nd</sup> Quarter 2017.....	9
Table 5: Visitor Arrivals by Country of Residence by Purpose of Visit by sex: 2 <sup>nd</sup> Quarter 2017.....	10
Table 6: Visitors Arrivals by Country of Residence by Age Groups by sex: 2 <sup>nd</sup> Quarter 2017.....	11
Table 7: Visitors Arrivals by Country of Residence by Occupation and Sex: 2 <sup>nd</sup> Quarter 2017 .....	12
Table 8: Visitors Arrivals by Country of Residence by Carrier By Sex: 2 <sup>nd</sup> Quarter 2017.....	13

Appendix 1 .....	14
<i>Concepts and Definitions</i> .....	14
Appendix 2 .....	15

Table 9: Intending Resident Arrivals by Country of Residence by Occupation by Sex: 2 <sup>nd</sup> Quarter 2017 .....	15
Table 10: Intending Resident Arrivals by Country of Residence by Age Groups by Sex: 2 <sup>nd</sup> Quarter 2017 ...	16
Table 11: Returning Resident Arrivals by Country of Residence by Age Groups by Sex: 2 <sup>nd</sup> Quarter 2017...	17
Table 12: Returning Resident Arrivals by Country of Residence by Occupation and Sex: 2 <sup>nd</sup> Quarter 2017..	18

## Introduction

This quarterly bulletin is produced by the National Statistics Office NSO in the Ministry of Finance and Treasury. It provides information on international arrivals comprised of the returning resident, intending resident, and visitor. The explanation of these categories is provided in Appendix 1 of the bulletin.

Visitor category comprised the bigger share of the bulletin, (portrayed in tables 1 to 8); compared to the returning and intending resident category portrayed in Tables 1, and 9 to 12. The bulletin includes twelve tables and eight charts stretched over cross-field tabulation, preferably to meet information need of local, regional, and international researchers.

The information captured through a self fill Disembarkation form that was completed by all disembarking passengers. The forms were collected by Immigration officials at international check-in counters on arrival. The coverage of the bulletin is complete.

Sheer acknowledgement is owed to the Immigration Department for their continuous support of this bulletin, by providing an office space and permitting the statistics office to input completed forms. With the official arrangement in-placed between the Statistics and Immigration departments this bulletin is possible.

The inclusion of four new tables 9 to 12 in Appendix 2 of the bulletin anticipates to complete the distribution portrait of Intending and Returning resident. The distribution is by age groups, occupation and by country of usual residence.

Data limitations, highlighted in the previous bulletin still remain, though some have substantially improved but noted again for ease of reference as follows:-

- Data entry duplication by the Immigration and Statistics departments was a long standing issue. Discussion of the issues had been made by the two departments, though resolution has been recognized, this was yet to be put in place.
- Timeliness of visitor statistics has improved but the bulletin may be delayed by the production process.
- The information contained in the bulletin is based on information captured from the data source by the SINSO.
- The monetary value of the industry is not available and thus not possible in this bulletin. The concepts and definitions of the arrival categories were included in Appendix 1. The symbols that are likely to be used are:

-	zero if representing a value
-	negative change if representing a percentage change
+	positive change if representing a percentage change
p	preliminary figure, subject to revision
r	revised
e	estimate
n/a	not available

For more information contact the Statistics Office, Department of Finance and Treasury:

TELEPHONE : (677) 22154/21427

FACSMILE : (677) 23775

E-MAIL : STATS-management@mof.gov.sb

: STATS-SocialDemography@mof.gov.sb

WEBSITE : **<http://www.statistics.gov.sb>**

Contact persons: 1. Mrs. Anterlyn **TUZAKANA**, Principal Statistician

2. Mrs. Loyce **PABULU**, Principal Statistician

## COMMENTARY OF RESULTS

### International Arrivals

Total Arrivals for the second quarter of 2017 was 12,941. This is an increase of 29.1% compared to the previous quarter (2nd Quarter 2017). Compared to the same quarter a year ago, an increase of 12.1% was recorded.

Arrivals classified by the category for the second quarter of 2017 showed that returning resident comprise of 49%.

Visitors recorded 50% and the remaining 1% was recorded for intending resident.

Visitors' arrival for the second quarter showed an increase of 31.6% to 6,425 compared to the first quarter 2017 figure of 4,881. Compared to the same quarter in 2017, an increase of 13.1% was recorded. Table 1, showed visitor and returning resident categories comprised the larger proportion of all arrivals while the intending resident represents the lesser share during the quarter. Chart 1 gives a clear picture of all the categories.

### Visitor by Country of Residence

Arrivals by country of residence for second quarter of the year showed that Australians (41.8%) remain the frequent travelers to Solomon Islands, followed by Other Asia (11.2%), NZ (7.1%), US (7%), PNG and Fiji (5.4%), and China (4.6%). Table 2 showed further detailed information.

### Visitor by Month

Visitors by monthly arrivals for the second quarter showed that June has the highest number of arrivals with 2,561. This was followed by the month of April with a recorded total of 2,013 persons and May the least with 1,851 persons.

### Tourists

Tourist<sup>1</sup> arrivals for second quarter of the year recorded a total of 2,218 persons and they spent an average of 11 days in the country. The highest number of tourists recorded for the quarter comes from Australia (42.2%) and staying in the country for an average of 11 days. This was followed by USA (13.4%), other Asia (9.6%), China (5%), PNG (4.8%) and New Zealand (4.4%)

### Visitor by Purpose of Visit

Distribution of visitors by purpose of visit revealed that Holiday and Vacation (32.9%) as most popular during the quarter. This was followed by Business & Conference (27.9%), other (21%), Visit friends & relatives (16.6%) and Transit & stopover the least with (1.7%).

### Visitor by Age Group

Visitor Arrivals by broad age groups showed that 71.5% of arrivals were in the 25years to 64years age range. The younger and the older age brackets represent 22.6% while the remaining 5.9% represents visitors who did not state their age. Male represents 67.1% of the arrival and female 32.9%. (Refer to Chart 6).

### Visitor by Occupation

Visitor by occupational category revealed that those who stated other (39.4%) recorded the highest during the quarter. This was followed by Professional and Technical (30.3%), No Work (11.6%), Administration & Managerial (10.5%), Service worker (2.5%) and Production and Related Work (2.1%). Table 7 further revealed that Australia dominated most of the categories of occupations during the quarter. Refer to Table 7 for further analysis.

### Visitor by Carrier

The most popular carriers during the quarter were Solomon Airlines (47%) followed by Air Niugini (22.6%), Virgin Australia (18.7%), Fiji Airways (7.9%) and Air Nauru (2.2%).

---

<sup>1</sup> Refer to Appendix 1 for the definition

Table 1: Total Arrivals Classified by Purpose of Travel by Sex, by Year by Quarter: 2<sup>nd</sup> Quarter 2017

Year / Quarter	Returning Resident							Intending Resident			Visitor			Total			
	Solomon Islander			Non-Solomon Islander				All	M	F	T	M	F	T	M	F	All
	M	F	T	M	F	T											
<b>2013</b> 1 <sup>st</sup>	1,966	1,111	3,077	6	0	6	3,083	961	338	1,299	4,034	1,284	5,318	6,967	2,733	9,700	
2 <sup>nd</sup>	2,422	1,344	3,766	1	2	3	3,769	764	279	1,043	4,531	1,664	6,195	7,718	3,289	11,007	
3 <sup>rd</sup>	2,442	1,415	3,857	5	3	8	3,865	715	228	943	5,007	1,880	6,887	8,169	3,526	11,695	
4 <sup>th</sup>	3,577	2,051	5,628	12	12	24	5,652	620	224	844	4,294	1,737	6,031	8,503	4,024	12,527	
<b>2014</b> 1 <sup>st</sup>	2,100	1,287	3,387	3	3	6	3,393	841	318	1,159	3,685	1,069	4,754	6,629	2,677	9,306	
2 <sup>nd</sup>	2,511	1,231	3,742	126	56	182	3,924	604	204	808	3,506	1,419	4,925	6,747	2,910	9,657	
3 <sup>rd</sup>	2,399	1,295	3,694	5	4	9	3,703	823	244	1,067	3,792	1,691	5,483	7,019	3,234	10,253	
4 <sup>th</sup>	3,290	1,937	5,227	20	5	25	5,252	692	147	839	3,481	1,427	4,908	7,483	3,516	10,999	
<b>2015</b> 1 <sup>st</sup>	2,356	1,530	3,886	9	6	15	3,901	843	280	1,123	3,251	1,148	4,399	6,459	2,964	9,423	
2 <sup>nd</sup>	2,770	1,535	4,305	14	3	17	4,322	825	201	1,026	3,958	1,604	5,562	7,567	3,343	10,910	
3 <sup>rd</sup>	3,022	1,749	4,771	14	6	20	4,791	348	127	475	3,864	1,850	5,714	7,248	3,732	10,980	
4 <sup>th</sup>	3,784	2,422	6,206	15	9	24	6,230	256	73	329	3,983	1,965	5,948	8,038	4,469	12,507	
<b>2016</b> 1 <sup>st</sup>	2,651	1,654	4,305	5	5	10	4,315	301	101	402	3,603	1,434	5,037	6,560	3,194	9,754	
2 <sup>nd</sup>	3,547	1,945	5,492	11	7	18	5,510	291	66	357	3,917	1,762	5,679	7,766	3,780	11,546	
3 <sup>rd</sup>	2,977	1,845	4,822	6	4	10	4,832	230	83	313	3,892	1,773	5,665	7,105	3,705	10,810	
4 <sup>th</sup>	4,685	2,933	7,618	19	4	23	7,641	142	42	184	4,449	2,364	6,813	9,295	5,343	14,638	
<b>2017</b> 1 <sup>st</sup>	3,183	1,711	4,894	3	3	6	4,900	199	47	246	3,485	1,396	4,881	6,870	3,157	10,027	
2 <sup>nd</sup>	4,237	2,162	6,399	3	2	5	6,404	79	33	112	4,314	2,111	6,425	8,633	4,308	12,941	
Percentage change																	
13 <sup>4th</sup> -14 <sup>1st</sup>	-41.3	-37.3	-39.8	-75.0	-75.0	-75.0	-40.0	35.6	42.0	37.3	-14.2	-38.5	-21.2	-22.0	-33.5	-25.7	
13 <sup>2nd</sup> -14 <sup>2nd</sup>	3.7	-8.4	-0.6	12500.0	2700.0	5966.7	4.1	-20.9	-26.9	-22.5	-22.6	-14.7	-20.5	-12.6	-11.5	-12.3	
14 <sup>1st</sup> -14 <sup>2nd</sup>	19.6	-4.4	10.5	4100.0	1766.7	2933.3	15.6	-28.2	-35.8	-30.3	-4.9	32.7	3.6	1.8	8.7	3.8	
13 <sup>3rd</sup> -14 <sup>3rd</sup>	-1.8	-8.5	-4.2	0.0	33.3	12.5	-4.2	15.1	7.0	13.1	-24.3	-10.1	-20.4	-14.1	-8.3	-12.3	
14 <sup>2nd</sup> -14 <sup>3rd</sup>	-4.5	5.2	-1.3	-96.0	-92.9	-95.1	-5.6	36.3	19.6	32.1	8.2	19.2	11.3	4.0	11.1	6.2	
13 <sup>4th</sup> -14 <sup>4th</sup>	-8.0	-5.6	-7.1	66.7	-58.3	4.2	-7.1	11.6	-34.4	-0.6	-18.9	-17.8	-18.6	-12.0	-12.6	-12.2	
14 <sup>3rd</sup> -14 <sup>4th</sup>	37.1	49.6	41.5	300.0	25.0	177.8	41.8	-15.9	-39.8	-21.4	-8.2	-15.6	-10.5	6.6	8.7	7.3	
14 <sup>1st</sup> -15 <sup>1st</sup>	12.2	18.9	14.7	200.0	100.0	150.0	15.0	0.2	-11.9	-3.1	-11.8	7.4	-7.5	-2.6	10.7	1.3	
14 <sup>4th</sup> -15 <sup>1st</sup>	-28.4	-21.0	-25.7	-55.0	20.0	-40.0	-25.7	21.8	90.5	33.8	-6.6	-19.6	-10.4	-13.7	-15.7	-14.3	
14 <sup>2nd</sup> -15 <sup>2nd</sup>	10.3	24.7	15.0	-88.9	-94.6	-90.7	10.1	36.6	-1.5	27.0	12.9	13.0	12.9	12.2	14.9	13.0	
15 <sup>1st</sup> -15 <sup>2nd</sup>	17.6	0.3	10.8	55.6	-50.0	13.3	10.8	-2.1	-28.2	-8.6	21.7	39.7	26.4	17.2	12.8	15.8	
14 <sup>3rd</sup> -15 <sup>3rd</sup>	26.0	35.1	29.2	180.0	50.0	122.2	29.4	-57.7	-48.0	-55.5	1.9	9.4	4.2	3.3	15.4	7.1	
15 <sup>2nd</sup> -15 <sup>3rd</sup>	9.1	13.9	10.8	0.0	100.0	17.6	10.9	-57.8	-36.8	-53.7	-2.4	15.3	2.7	-4.2	11.6	0.6	
14 <sup>4th</sup> -15 <sup>4th</sup>	15.0	25.0	18.7	-25.0	80.0	-4.0	18.6	-63.0	-50.3	-60.8	14.4	37.7	21.2	7.4	27.1	13.7	
15 <sup>3rd</sup> -15 <sup>4th</sup>	25.2	38.5	30.1	7.1	50.0	20.0	30.0	-26.4	-42.5	-30.7	3.1	6.2	4.1	10.9	19.7	13.9	
15 <sup>1st</sup> -16 <sup>1st</sup>	12.5	8.1	10.8	-44.4	-16.7	-33.3	10.6	-64.3	-63.9	-64.2	10.8	24.9	14.5	1.6	7.8	3.5	
15 <sup>4th</sup> -16 <sup>1st</sup>	-29.9	-31.7	-30.6	-66.7	-44.4	-58.3	-30.7	17.6	38.4	22.2	-9.5	-27.0	-15.3	-18.4	-28.5	-22.0	
15 <sup>2nd</sup> -16 <sup>2nd</sup>	28.1	26.7	27.6	-21.4	133.3	5.9	27.5	-64.7	-67.2	-65.2	-1.0	9.9	2.1	2.6	13.1	5.8	
16 <sup>1st</sup> -16 <sup>2nd</sup>	33.8	17.6	27.6	120.0	40.0	80.0	27.7	-3.3	-34.7	-11.2	8.7	22.9	12.7	18.4	18.3	18.4	
15 <sup>3rd</sup> -16 <sup>3rd</sup>	-1.5	5.5	1.1	-57.1	-33.3	-50.0	0.9	-33.9	-34.6	-34.1	0.7	-4.2	-0.9	-2.0	-0.7	-1.5	
16 <sup>2nd</sup> -16 <sup>3rd</sup>	-16.1	-5.1	-12.2	-45.5	-42.9	-44.4	-12.3	-21.0	25.8	-12.3	-0.6	0.6	-0.2	-8.5	-2.0	-6.4	
15 <sup>4th</sup> -16 <sup>4th</sup>	23.8	21.1	22.8	26.7	-55.6	-4.2	22.6	-44.5	-42.5	-44.1	11.7	20.3	14.5	15.6	19.6	17.0	
16 <sup>3rd</sup> -16 <sup>4th</sup>	57.4	59.0	58.0	216.7	0.0	130.0	58.1	-38.3	-49.4	-41.2	14.3	33.3	20.3	30.8	44.2	35.4	
16 <sup>1st</sup> -17 <sup>1st</sup>	20.1	3.4	13.7	-40.0	-40.0	-40.0	13.6	-33.9	-53.5	-38.8	-3.3	-2.6	-3.1	4.7	-1.2	2.8	
16 <sup>4th</sup> -17 <sup>1st</sup>	-32.1	-41.7	-35.8	-84.2	-25.0	-73.9	-35.9	40.1	11.9	33.7	-21.7	-40.9	-28.4	-26.1	-40.9	-31.5	
16 <sup>2nd</sup> -17 <sup>2nd</sup>	19.5	11.2	16.5	-72.7	-71.4	-72.2	16.2	-72.9	-50.0	-68.6	10.1	19.8	13.1	11.2	14.0	12.1	
17 <sup>1st</sup> -17 <sup>2nd</sup>	33.1	26.4	30.8	0.0	-33.3	-16.7	30.7	-60.3	-29.8	-54.5	23.8	51.2	31.6	25.7	36.5	29.1	

Chart 1: Arrivals by Category 2<sup>nd</sup> quarter 2017

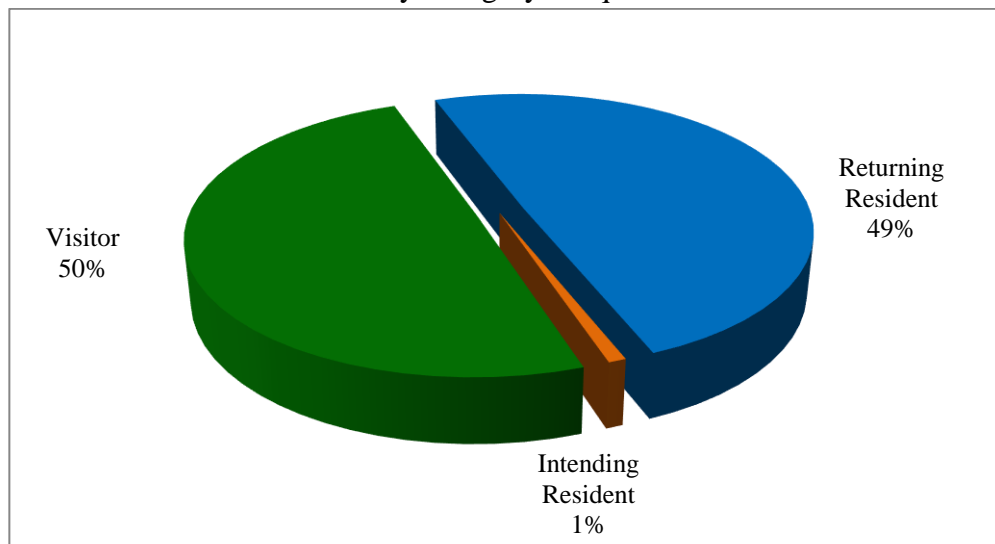


Table 2: Visitor Arrivals by Country of Residence by Year by Quarter: 2<sup>nd</sup> Quarter 2017

Country of Usual Residence	2014					2015					2016				2017	
	Q1	Q2	Q3	Q4	Total	Q1	Q2	Q3	Q4	Total	Q1	Q2	Q3	Q4	Q1	Q2
Australia	2088	2,225	2,521	2,300	9,134	1,750	2,519	2,599	2,641	9,509	2,024	2,445	2,344	2,726	1,867	2,684
PNG	383	260	275	325	1,243	323	398	236	384	1,341	307	243	361	468	280	347
US	231	362	324	220	1,137	329	322	388	374	1,413	359	444	349	332	237	451
NZ	277	343	404	382	1,406	281	376	439	355	1,451	279	439	418	408	301	459
UK	65	99	77	96	337	69	111	90	117	387	93	82	90	82	92	89
Japan	137	84	172	112	505	124	91	232	134	581	122	83	158	189	154	182
Germany	15	30	35	22	102	25	26	24	34	109	35	29	53	44	36	38
Canada	38	43	42	26	149	28	34	31	60	153	37	44	23	62	40	48
Oth.Pacific	139	81	184	167	571	127	139	126	188	580	122	149	156	238	168	283
Vanuatu	117	171	100	141	529	109	152	162	186	609	175	131	148	414	150	154
Hong Kong	35	11	28	21	95	25	32	18	18	93	21	16	32	30	37	41
Fiji	351	361	273	270	1,255	268	405	358	360	1,391	351	365	406	440	394	349
Other Asia	689	580	658	497	2,424	603	609	624	590	2,426	720	842	670	785	690	717
Netherlands	7	18	13	11	49	11	11	12	21	55	21	17	24	18	12	16
Oth.Europe	119	76	130	103	428	101	109	113	119	442	111	101	131	156	99	105
France	21	19	33	13	86	10	15	22	130	177	23	24	32	38	19	34
Italy	14	10	21	30	75	21	16	10	14	61	32	11	24	28	15	11
China	-	103	167	155	425	164	177	212	189	742	166	194	221	246	207	295
Oth.Country	28	49	26	17	120	31	20	18	34	103	39	20	25	109	82	120
Not stated															1	2
<b>Total</b>	<b>4,754</b>	<b>4,925</b>	<b>5,483</b>	<b>4,908</b>	<b>20,070</b>	<b>4,399</b>	<b>5,562</b>	<b>5,714</b>	<b>5,948</b>	<b>21,623</b>	<b>5,037</b>	<b>5,679</b>	<b>5,665</b>	<b>6,813</b>	<b>4,881</b>	<b>6,425</b>
Percentage																
Australia	43.9	45.2	46.0	46.9	45.5	39.8	45.3	45.5	44.4	44.0	40.2	43.1	41.4	40.0	38.3	41.8
PNG	8.1	5.3	5.0	6.6	6.2	7.3	7.2	4.1	6.5	6.2	6.1	4.3	6.4	6.9	5.7	5.4
US	4.9	7.4	5.9	4.5	5.7	7.5	5.8	6.8	6.3	6.5	7.1	7.8	6.2	4.9	4.9	7
NZ	5.8	7.0	7.4	7.8	7.0	6.4	6.8	7.7	6.0	6.7	5.5	7.7	7.4	6.0	6.2	7.1
UK	1.4	2.0	1.4	2.0	1.7	1.6	2.0	1.6	2.0	1.8	1.8	1.4	1.6	1.2	1.9	1.4
Japan	2.9	1.7	3.1	2.3	2.5	2.8	1.6	4.1	2.3	2.7	2.4	1.5	2.8	2.8	3.2	2.8
Germany	0.3	0.6	0.6	0.4	0.5	0.6	0.5	0.4	0.6	0.5	0.7	0.5	0.9	0.6	0.7	0.6
Canada	0.8	0.9	0.8	0.5	0.7	0.6	0.6	0.5	1.0	0.7	0.7	0.8	0.4	0.9	0.8	0.7
Oth.Pacific	2.9	1.6	3.4	3.4	2.8	2.9	2.5	2.2	3.2	2.7	2.4	2.6	2.8	3.5	3.4	4.4
Vanuatu	2.5	3.5	1.8	2.9	2.6	2.5	2.7	2.8	3.1	2.8	3.5	2.3	2.6	6.1	3.1	2.4
Hong Kong	0.7	0.2	0.5	0.4	0.5	0.6	0.6	0.3	0.3	0.4	0.4	0.3	0.6	0.4	0.8	0.6
Fiji	7.4	7.3	5.0	5.5	6.3	6.1	7.3	6.3	6.1	6.4	7.0	6.4	7.2	6.5	8.1	5.4
Oth.Asia	14.5	11.8	12.0	10.1	12.1	13.7	10.9	10.9	9.9	11.2	14.3	14.8	11.8	11.5	14.1	11.2
Netherlands	0.1	0.4	0.2	0.2	0.2	0.3	0.2	0.2	0.4	0.3	0.4	0.3	0.4	0.3	0.2	0.2
Oth.Europe	2.5	1.5	2.4	2.1	2.1	2.3	2.0	2.0	2.0	2.0	2.2	1.8	2.3	2.3	2.0	1.6
France	0.4	0.4	0.6	0.3	0.4	0.2	0.3	0.4	2.2	0.8	0.5	0.4	0.6	0.6	0.4	0.5
Italy	0.3	0.2	0.4	0.6	0.4	0.5	0.3	0.2	0.2	0.3	0.6	0.2	0.4	0.4	0.3	0.2
China*	-	2.1	3.0	3.2	2.1	3.7	3.2	3.7	3.2	3.4	3.3	3.4	3.9	3.6	4.2	4.6
Oth.Country	0.6	1.0	0.5	0.3	0.6	0.7	0.4	0.3	0.6	0.5	0.8	0.4	0.4	1.6	1.7	1.9
<b>Total</b>	<b>100.0</b>	<b>100.0</b>	<b>100.0</b>	<b>100.0</b>	<b>100.0</b>	<b>100.0</b>	<b>100.0</b>	<b>100.0</b>	<b>100.0</b>	<b>100.0</b>	<b>100.0</b>	<b>100.0</b>	<b>100.0</b>	<b>100.0</b>	<b>100.0</b>	<b>100</b>

\*Figures for 'China' for previous quarters was included in 'Other Asia'

Chart 2: Visitors Arrival by Country of Residence by quarter, 2nd Quarter 2017

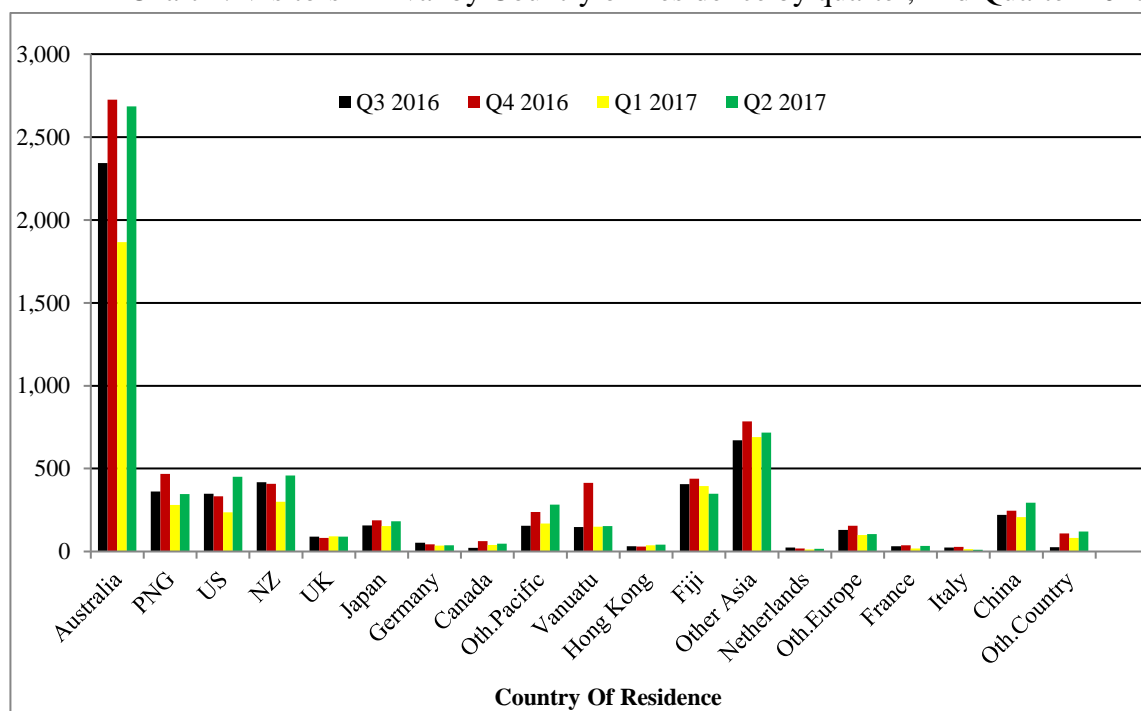


Table 3: Visitor Arrivals by Month: 2007 – 2nd Quarter 2017

Month	2007	2008	2009	2010	2011	2012	2013	2014	2015	2016	2017
January	546	889	1,602	1,235	1,600	1,383	1,590	1,415	1,259	1,655	1,514
February	1,020	1,282	1,422	1,209	1,658	1,591	1,544	1,523	1,465	1,707	1,635
March	1,251	802	1,249	1,766	1,861	1,677	2,184	1,816	1,675	1,675	1,732
April	1,452	1,388	1,499	1,820	1,736	1,839	2,021	1,514	1,750	1,799	2,013
May	1,137	1,261	1,393	1,137	1,760	1,968	1,857	1,462	1,681	1,896	1,851
June	1,265	1,552	1,724	1,797	2,009	3,122	2,317	1,949	2,131	1,984	2,561
July	822	1,692	1,603	2,264	2,185	2,865	2,574	2,114	2,077	2,319	
August	1,299	1,469	1,520	1,845	1,900	2,133	2,022	1,639	1,426	1,918	
September	1,299	1,457	1,659	2,153	2,159	2,309	2,291	1,730	2,211	1,428	
October	1,260	1,399	1,709	1,813	1,931	1,929	2057	1,798	1,748	2,257	
November	1,246	1,545	1,475	1,624	2,195	1,545	1981	1,515	2,101	2,199	
December	1,151	1,528	1,405	1,858	1,947	1,564	1993	1,595	2,099	2,357	
Total	13,748	16,264	18,260	20,521	22,941	23,925	24,431	20,070	19,524	23,194	11,306

Percentage											
January	4.0	5.5	8.8	5.5	7.0	5.8	6.5	7.1	6.4	7.1	13.4
February	7.4	7.9	7.8	5.4	7.2	6.6	6.3	7.6	7.5	7.4	14.5
March	9.1	4.9	6.8	7.8	8.1	7.0	8.9	9.0	8.6	7.2	15.3
April	10.6	8.5	8.2	8.1	7.6	7.7	8.3	7.5	9.0	7.8	17.8
May	8.3	7.8	7.6	5.0	7.7	8.2	7.6	7.3	8.6	8.2	16.4
June	9.2	9.5	9.4	8.0	8.8	13.0	9.5	9.7	10.9	8.6	22.7
July	6.0	10.4	8.8	10.0	9.5	12.0	10.5	10.5	10.6	10.0	
August	9.4	9.0	8.3	8.2	8.3	8.9	8.3	8.2	7.3	8.3	
September	9.4	9.0	9.1	9.6	9.4	9.7	9.4	8.6	11.3	6.2	
October	9.2	8.6	9.4	8.0	8.4	8.1	8.4	9.0	9.0	9.7	
November	9.1	9.5	8.1	7.2	9.6	6.5	8.1	7.5	10.8	9.5	
December	8.4	9.4	7.7	8.2	8.5	6.5	8.2	7.9	10.8	10.2	
Total	100.0	100.0	100.0	100.0	100.0	100.0	100.0	100.0	100.0	100.0	100.0

Chart 3: Visitors Arrival by Month, 2014 – 2nd quarter 2017

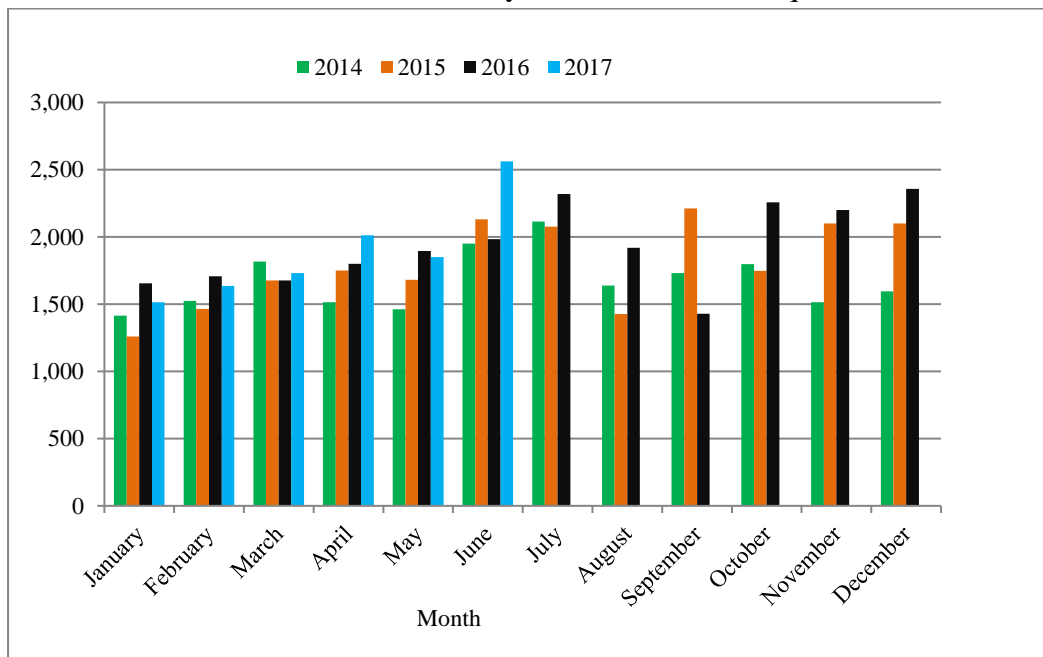




Table 4: Visitors, classified as tourists by Country of Residence by Year, Quarter and Average length of stay:  
2<sup>nd</sup> Quarter 2015 – 2nd Quarter 2017

Country of Usual Residence	2015						2016								2017			
	Quarter 2		Quarter 3		Quarter 4		Quarter 1		Quarter 2		Quarter 3		Quarter 4		Quarter 1		Quarter 2	
	tourist	day	tourist	day	tourist	day	tourist	day	tourist	day	tourist	day	tourist	day	tourist	day	tourist	day
Australia	575	11.7	920	10.8	935	12.3	649	11.2	912	11.7	896	10.2	1,050	13.2	594	13.7	936	11.9
PNG	67	4.0	41	10.0	97	20.3	66	8.0	37	11.1	92	6.3	182	13.3	71	7.1	107	5.9
US	103	14.2	141	11.0	227	11.0	162	7.8	283	11.9	190	12.1	185	12.2	105	9.4	298	11.3
NZ	31	21.7	76	12.6	83	19.2	32	18.8	66	15.4	97	12.6	87	14.1	56	13.9	97	12
UK	29	14.7	47	15.3	73	15.5	31	13.0	38	16.9	44	13.9	30	15.1	53	13.7	34	20.5
Japan	20	7.1	121	6.0	60	7.0	49	9.0	32	11.3	75	6.4	113	11.3	71	9.8	88	5.4
Germany	12	18.7	16	16.1	23	19.7	17	20.9	19	13.5	42	9.6	36	14.4	24	13.9	33	13.6
Canada	17	12.5	12	14.8	43	8.8	21	13.6	22	8.9	12	15.8	44	12.9	26	13	30	12.8
Oth.Pacific	15	16.6	23	8.9	40	15.1	25	8.6	17	7.6	16	7.7	37	8.2	20	5.9	44	12.1
Vanuatu	18	14.4	29	9.6	53	19.8	28	16.2	15	13.9	22	9.9	113	15.6	24	9.8	29	9.4
Hong Kong	12	7.4	4	18.8	6	8.0	8	4.9	10	12.2	12	8.8	22	10.9	19	10.7	29	4.1
Fiji	24	26.6	30	31.2	49	24.7	51	12.9	46	20.8	37	10.7	89	17.0	46	19.4	34	10.7
Oth.Asia	135	18.2	128	24.6	123	18.7	189	14.9	222	14.8	174	18.4	189	18.7	163	14	214	11.6
Netherlands	2	11.5	2	6.0	11	10.4	14	16.2	10	12.0	17	14.1	6	11.0	6	18.5	9	9.3
Oth.Europe	47	11.3	68	9.3	70	15.3	63	9.7	59	15.6	91	11.0	107	12.4	71	12.3	64	13.5
France	4	11.0	16	10.5	103	6.8	10	8.7	14	13.4	21	12.7	21	12.6	9	7.1	19	22.2
Italy	6	5.2	3	24.0	3	51.3	13	19.8	5	13.4	16	11.1	19	13.9	10	12.7	6	9.8
China	50	16.1	77	24.5	69	18.9	50	17.0	77	15.1	98	13.8	83	15.7	92	18	113	15.6
Oth.Country	3	10.0	6	17.3	19	14.5	19	16.3	3	2.0	6	12.5	34	11.9	36	7.6	34	18.9
Total	1,170	13.1	1,760	12.7	2,087	13.8	1,497	11.8	1,887	12.8	1,958	11.3	2,447	13.7	1,496	13	2,218	11.7

Chart 4: Tourist Arrivals by Country of Residence, 2nd Quarter 2017

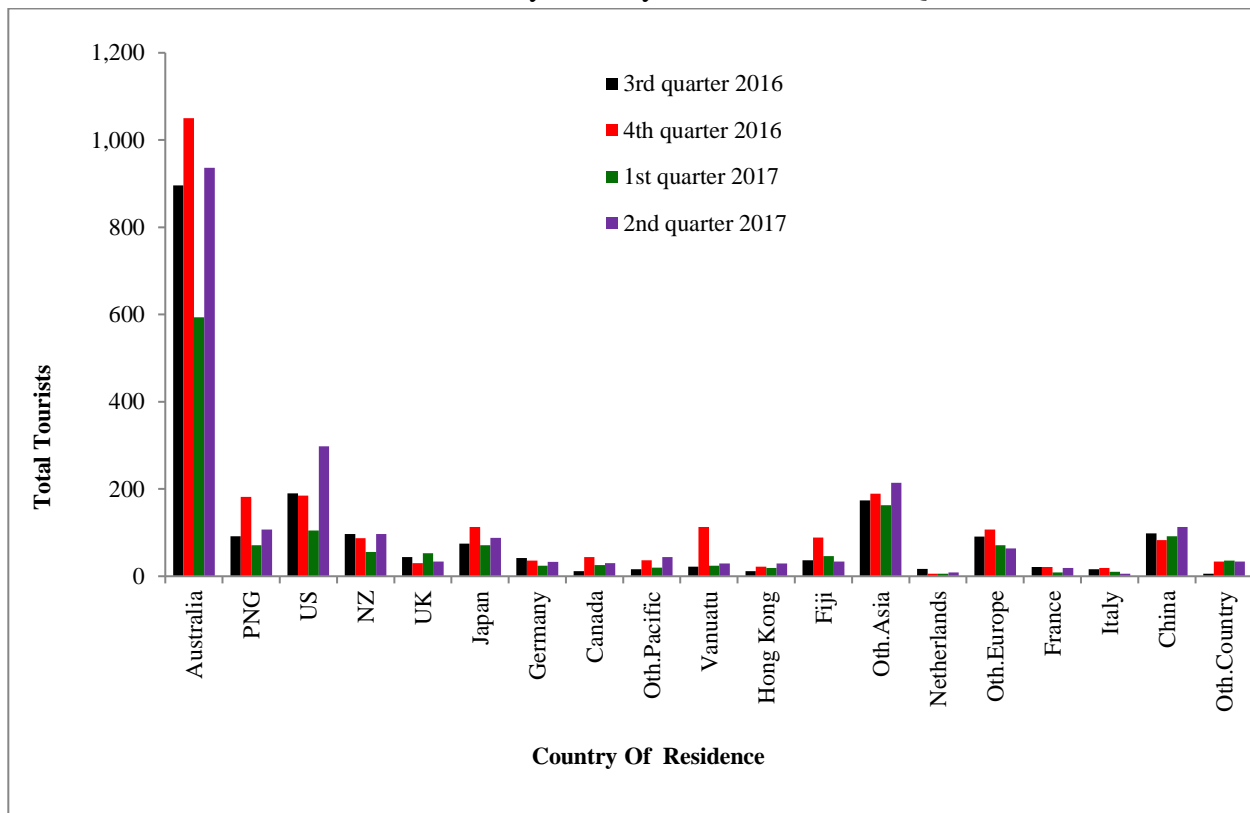


Table 5: Visitor Arrivals by Country of Residence by Purpose of Visit by Sex: 2<sup>nd</sup> Quarter 2017

Country of Usual Residence	Business & Conference			Holiday & Vocation			Transit & Stopover			Visit friends/Relatives			Other			Total		
	M	F	T	M	F	T	M	F	T	M	F	T	M	F	T	M	F	All
Australia	458	165	623	531	399	930	5	1	6	282	240	522	388	215	603	1,664	1,020	2,684
PNG	89	27	116	37	23	60	28	19	47	35	26	61	45	18	63	234	113	347
US	42	15	57	156	130	286	8	4	12	26	16	42	37	17	54	269	182	451
NZ	138	30	168	47	47	94	3	0	3	38	34	72	89	33	122	315	144	459
UK	16	2	18	19	15	34	0	0	0	9	8	17	10	10	20	54	35	89
Japan	59	3	62	60	26	86	1	1	2	5	3	8	16	8	24	141	41	182
Germany	2	1	3	20	13	33	0	0	0	1	0	1	0	1	1	23	15	38
Canada	7	0	7	19	11	30	0	0	0	4	1	5	1	5	6	31	17	48
Oth.Pacific	90	36	126	22	16	38	6	0	6	14	19	33	66	14	80	198	85	283
Vanuatu	45	8	53	22	6	28	1	0	1	25	20	45	20	7	27	113	41	154
Hong Kong	5	1	6	19	10	29	0	0	0	2	2	4	2	0	2	28	13	41
Fiji	113	44	157	15	13	28	5	1	6	36	40	76	48	34	82	217	132	349
Oth.Asia	205	32	237	156	39	195	18	1	19	88	20	108	127	31	158	594	123	717
Netherlands	3	1	4	7	2	9	0	0	0	1	1	2	1	0	1	12	4	16
Oth.Europe	13	5	18	43	19	62	2	0	2	3	2	5	12	6	18	73	32	105
France	3	1	4	14	5	19	0	0	0	2	0	2	6	3	9	25	9	34
Italy	1	0	1	4	2	6	0	0	0	2	0	2	2	0	2	9	2	11
China	85	13	98	72	39	111	1	1	2	32	11	43	34	7	41	224	71	295
Oth.Country	31	6	37	19	14	33	1	0	1	13	6	19	24	6	30	88	32	120
Not stated	0	0	0	0	0	0	0	0	0	1	0	1	1	0	1	2	-	2
<b>Total</b>	<b>1,405</b>	<b>390</b>	<b>1,795</b>	<b>1,282</b>	<b>829</b>	<b>2,111</b>	<b>79</b>	<b>28</b>	<b>107</b>	<b>619</b>	<b>449</b>	<b>1068</b>	<b>929</b>	<b>415</b>	<b>1,344</b>	<b>4,314</b>	<b>2,111</b>	<b>6,425</b>
Percentage																		
Australia	17.1	6.1	23.2	19.8	14.9	34.6	0.2	*	0.2	10.5	8.9	19.4	14.5	8.0	22.5	62.0	38.0	100.0
PNG	25.6	7.8	33.4	10.7	6.6	17.3	8.1	5.5	13.5	10.1	7.5	17.6	13.0	5.2	18.2	67.4	32.6	100.0
US	9.3	3.3	12.6	34.6	28.8	63.4	1.8	0.9	2.7	5.8	3.5	9.3	8.2	3.8	12.0	59.6	40.4	100.0
NZ	30.1	6.5	36.6	10.2	10.2	20.5	0.7	0.0	0.7	8.3	7.4	15.7	19.4	7.2	26.6	68.6	31.4	100.0
UK	18.0	2.2	20.2	21.3	16.9	38.2	0.0	0.0	0.0	10.1	9.0	19.1	11.2	11.2	22.5	60.7	39.3	100.0
Japan	32.4	1.6	34.1	33.0	14.3	47.3	0.5	0.5	1.1	2.7	1.6	4.4	8.8	4.4	13.2	77.5	22.5	100.0
Germany	5.3	2.6	7.9	52.6	34.2	86.8	0.0	0.0	0.0	2.6	0.0	2.6	0.0	2.6	2.6	60.5	39.5	100.0
Canada	14.6	0.0	14.6	39.6	22.9	62.5	0.0	0.0	0.0	8.3	2.1	10.4	2.1	10.4	12.5	64.6	35.4	100.0
Oth.Pacific	31.8	12.7	44.5	7.8	5.7	13.4	2.1	0.0	2.1	4.9	6.7	11.7	23.3	4.9	28.3	70.0	30.0	100.0
Vanuatu	29.2	5.2	34.4	14.3	3.9	18.2	0.6	0.0	0.6	16.2	13.0	29.2	13.0	4.5	17.5	73.4	26.6	100.0
Hong Kong	12.2	2.4	14.6	46.3	24.4	70.7	0.0	0.0	0.0	4.9	4.9	9.8	4.9	0.0	4.9	68.3	31.7	100.0
Fiji	32.4	12.6	45.0	4.3	3.7	8.0	1.4	0.3	1.7	10.3	11.5	21.8	13.8	9.7	23.5	62.2	37.8	100.0
Oth.Asia	28.6	4.5	33.1	21.8	5.4	27.2	2.5	0.1	2.6	12.3	2.8	15.1	17.7	4.3	22.0	82.8	17.2	100.0
Netherlands	18.8	6.3	25.0	43.8	12.5	56.3	0.0	0.0	0.0	6.3	6.3	12.5	6.3	0.0	6.3	75.0	25.0	100.0
Oth.Europe	12.4	4.8	17.1	41.0	18.1	59.0	1.9	0.0	1.9	2.9	1.9	4.8	11.4	5.7	17.1	69.5	30.5	100.0
France	8.8	2.9	11.8	41.2	14.7	55.9	0.0	0.0	0.0	5.9	0.0	5.9	17.6	8.8	26.5	73.5	26.5	100.0
Italy	9.1	0.0	9.1	36.4	18.2	54.5	0.0	0.0	0.0	18.2	0.0	18.2	18.2	0.0	18.2	81.8	18.2	100.0
China	28.8	4.4	33.2	24.4	13.2	37.6	0.3	0.3	0.7	10.8	3.7	14.6	11.5	2.4	13.9	75.9	24.1	100.0
Oth.Country	25.8	5.0	30.8	15.8	11.7	27.5	0.8	0.0	0.8	10.8	5.0	15.8	20.0	5.0	25.0	73.3	26.7	100.0
Not stated	0.0	0.0	0.0	0.0	0.0	0.0	0.0	0.0	0.0	50.0	0.0	50.0	50.0	0.0	50.0	100.0	0.0	100.0
<b>Total</b>	<b>21.9</b>	<b>6.1</b>	<b>27.9</b>	<b>20.0</b>	<b>12.9</b>	<b>32.9</b>	<b>1.2</b>	<b>0.4</b>	<b>1.7</b>	<b>9.6</b>	<b>7.0</b>	<b>16.6</b>	<b>14.5</b>	<b>6.5</b>	<b>20.9</b>	<b>67.1</b>	<b>32.9</b>	<b>100.0</b>

Chart 5: Visitors Arrival by Country of Residence by Purpose of Visit, 2<sup>nd</sup> Quarter 2017

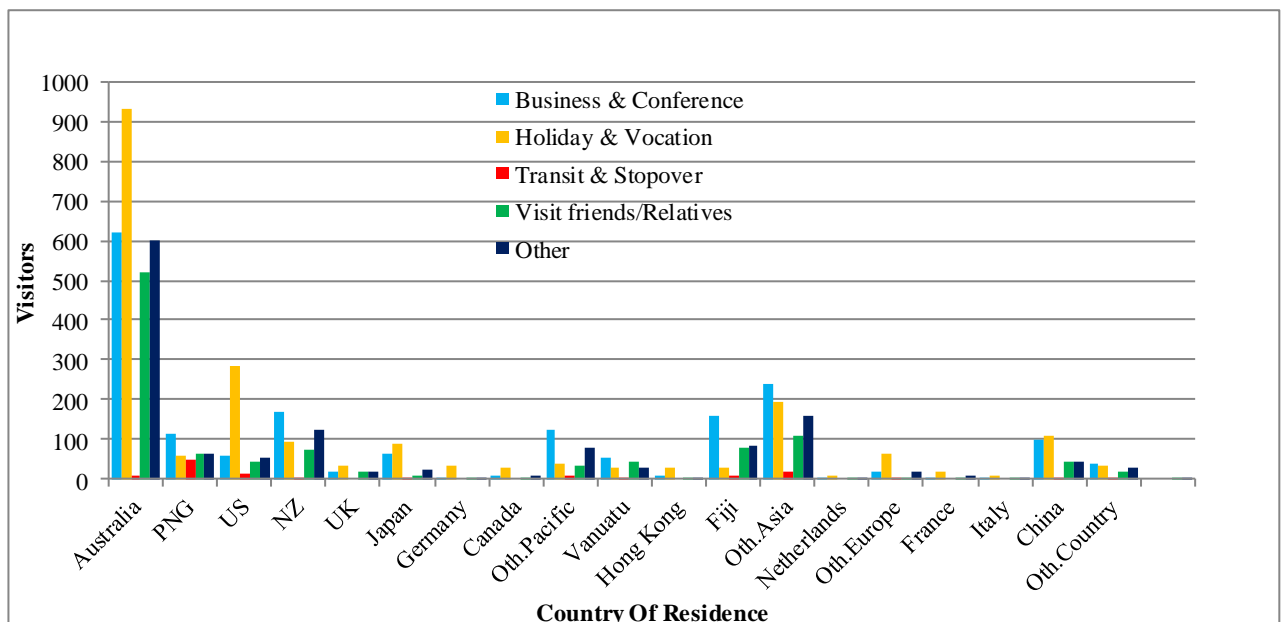


Table 6: Visitor Arrivals by Country of Residence by Age Groups by Sex: 2nd Quarter 2017

Country of Usual Residence	Age-Group																		Total
	0-14		15-24		25-34		35-44		45-54		55-64		65+		Not Stated		Total		
	M	F	M	F	M	F	M	F	M	F	M	F	M	F	M	F	M	F	
Australia	80	85	128	139	216	182	266	132	354	172	319	168	209	89	92	53	1,664	1,020	2,684
PNG	6	6	19	4	36	29	60	25	45	22	37	14	5	1	26	12	234	113	347
US	6	3	18	20	23	18	36	21	53	24	56	39	67	46	10	11	269	182	451
NZ	12	8	19	25	38	21	48	18	67	31	71	25	48	8	12	8	315	144	459
UK	2	1	3	5	7	11	5	3	12	5	16	7	8	2	1	1	54	35	89
Japan	1	0	7	0	12	8	24	7	32	4	26	8	34	13	5	1	141	41	182
Germany	0	0	2	2	4	3	5	3	4	5	6	1	1	1	1	0	23	15	38
Canada	0	0	1	1	2	2	1	1	5	4	15	6	5	2	2	1	31	17	48
Oth.Pacific	5	3	13	9	45	14	36	16	49	22	25	14	10	0	15	7	198	85	283
Vanuatu	5	2	14	4	17	6	21	13	23	3	17	6	7	3	9	4	113	41	154
Hong Kong	0	0	0	0	2	1	2	1	5	2	9	5	7	4	3	0	28	13	41
Fiji	5	13	12	6	45	28	63	26	47	31	27	18	9	4	9	6	217	132	349
Oth.Asia	9	2	25	9	84	28	144	22	157	29	98	26	38	1	39	6	594	123	717
Netherlands	0	0	0	0	1	0	2	0	4	0	1	2	3	1	1	1	12	4	16
Oth.Europe	2	0	3	3	15	6	16	8	10	11	12	2	8	1	7	1	73	32	105
France	0	1	0	1	6	3	8	2	4	0	4	1	2	0	1	1	25	9	34
Italy	0	0	0	0	2	0	2	1	3	0	1	0	1	1	0	0	9	2	11
China	8	0	21	14	60	27	54	13	42	7	13	6	2	0	24	4	224	71	295
Oth.Country	3	2	4	2	18	2	22	13	21	1	12	4	4	5	4	3	88	32	120
Not stated	0	0	0	0	2	0	0	0	0	0	0	0	0	0	0	0	2	-	2
<b>Total</b>	<b>144</b>	<b>126</b>	<b>289</b>	<b>244</b>	<b>635</b>	<b>389</b>	<b>815</b>	<b>325</b>	<b>937</b>	<b>373</b>	<b>765</b>	<b>352</b>	<b>468</b>	<b>182</b>	<b>261</b>	<b>120</b>	<b>4,314</b>	<b>2,111</b>	<b>6,425</b>
Country of Usual Residence	Percentage																		Total
	0-14		15-24		25-34		35-44		45-54		55-64		65+		Not Stated		Total		
	M	F	M	F	M	F	M	F	M	F	M	F	M	F	M	F	M	F	
Australia	3.0	3.2	4.8	5.2	8.0	6.8	9.9	4.9	13.2	6.4	11.9	6.3	7.8	3.3	3.4	2.0	62.0	38.0	100.0
PNG	1.7	1.7	5.5	1.2	10.4	8.4	17.3	7.2	13.0	6.3	10.7	4.0	1.4	0.3	7.5	3.5	67.4	32.6	100.0
US	1.3	0.7	4.0	4.4	5.1	4.0	8.0	4.7	11.8	5.3	12.4	8.6	14.9	10.2	2.2	2.4	59.6	40.4	100.0
NZ	2.6	1.7	4.1	5.4	8.3	4.6	10.5	3.9	14.6	6.8	15.5	5.4	10.5	1.7	2.6	1.7	68.6	31.4	100.0
UK	2.2	1.1	3.4	5.6	7.9	12.4	5.6	3.4	13.5	5.6	18.0	7.9	9.0	2.2	1.1	1.1	60.7	39.3	100.0
Japan	0.5	0.0	3.8	0.0	6.6	4.4	13.2	3.8	17.6	2.2	14.3	4.4	18.7	7.1	2.7	0.5	77.5	22.5	100.0
Germany	0.0	0.0	5.3	5.3	10.5	7.9	13.2	7.9	10.5	13.2	15.8	2.6	2.6	2.6	2.6	0.0	60.5	39.5	100.0
Canada	0.0	0.0	2.1	2.1	4.2	4.2	2.1	2.1	10.4	8.3	31.3	12.5	10.4	4.2	4.2	2.1	64.6	35.4	100.0
Oth.Pacific	1.8	1.1	4.6	3.2	15.9	4.9	12.7	5.7	17.3	7.8	8.8	4.9	3.5	0.0	5.3	2.5	70.0	30.0	100.0
Vanuatu	3.2	1.3	9.1	2.6	11.0	3.9	13.6	8.4	14.9	1.9	11.0	3.9	4.5	1.9	5.8	2.6	73.4	26.6	100.0
Hong Kong	0.0	0.0	0.0	0.0	4.9	2.4	4.9	2.4	12.2	4.9	22.0	12.2	17.1	9.8	7.3	0.0	68.3	31.7	100.0
Fiji	1.4	3.7	3.4	1.7	12.9	8.0	18.1	7.4	13.5	8.9	7.7	5.2	2.6	1.1	2.6	1.7	62.2	37.8	100.0
Oth.Asia	1.3	0.3	3.5	1.3	11.7	3.9	20.1	3.1	21.9	4.0	13.7	3.6	5.3	0.1	5.4	0.8	82.8	17.2	100.0
Netherlands	0.0	0.0	0.0	0.0	6.3	0.0	12.5	0.0	25.0	0.0	6.3	12.5	18.8	6.3	6.3	6.3	75.0	25.0	100.0
Oth.Europe	1.9	0.0	2.9	2.9	14.3	5.7	15.2	7.6	9.5	10.5	11.4	1.9	7.6	1.0	6.7	1.0	69.5	30.5	100.0
France	0.0	2.9	0.0	2.9	17.6	8.8	23.5	5.9	11.8	0.0	11.8	2.9	5.9	0.0	2.9	2.9	73.5	26.5	100.0
Italy	0.0	0.0	0.0	0.0	18.2	0.0	18.2	9.1	27.3	0.0	9.1	0.0	9.1	9.1	0.0	0.0	81.8	18.2	100.0
China	2.7	0.0	7.1	4.7	20.3	9.2	18.3	4.4	14.2	2.4	4.4	2.0	0.7	0.0	8.1	1.4	75.9	24.1	100.0
Oth.Country	2.5	1.7	3.3	1.7	15.0	1.7	18.3	10.8	17.5	0.8	10.0	3.3	3.3	4.2	3.3	2.5	73.3	26.7	100.0
Not stated	0.0	0.0	0.0	0.0	100.0	0.0	0.0	0.0	0.0	0.0	0.0	0.0	0.0	0.0	0.0	0.0	100.0	0.0	100.0
<b>Total</b>	<b>2.2</b>	<b>2.0</b>	<b>4.5</b>	<b>3.8</b>	<b>9.9</b>	<b>6.1</b>	<b>12.7</b>	<b>5.1</b>	<b>14.6</b>	<b>5.8</b>	<b>11.9</b>	<b>5.5</b>	<b>7.3</b>	<b>2.8</b>	<b>4.1</b>	<b>1.9</b>	<b>67.1</b>	<b>32.9</b>	<b>100.0</b>

Chart 6: Visitor Arrivals by Age group category by Sex, 2<sup>nd</sup> Quarter 2017

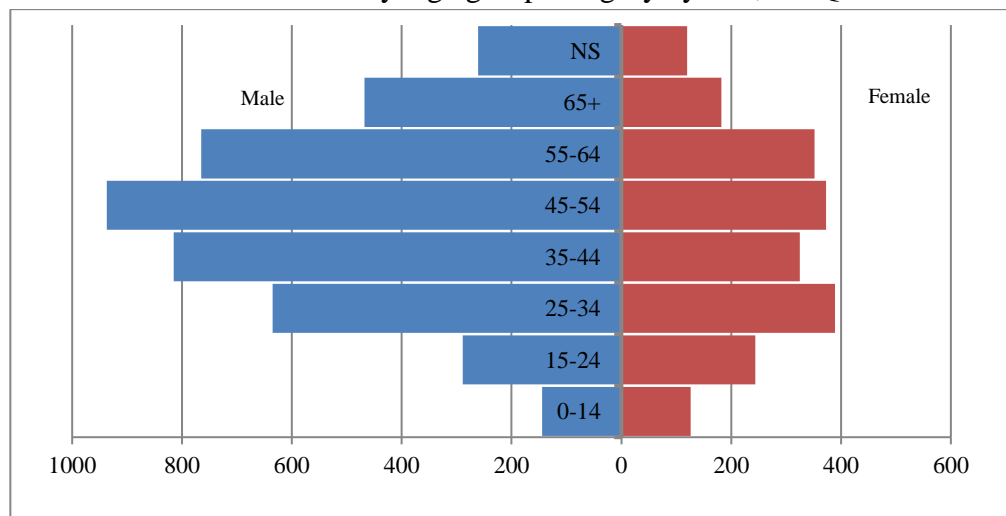


Table 7: Visitor Arrivals by Country of Residence by Occupation and Sex: 2<sup>nd</sup> Quarter 2017

Country of Usual Residence	Professional and Technical		Administration and Managerial		Clerical & Related Work		Sales Worker		Service Worker		Agriculture Forestry Fishery		Production & Related Work		Other		No Work		Not Stated		Total		
	M	F	M	F	M	F	M	F	M	F	M	F	M	F	M	F	M	F	M	F	M	F	All
Australia	534	417	191	75	8	11	16	5	52	12	15	1	79	1	599	371	169	127	1	0	1,664	1,020	2,684
PNG	78	44	36	13	0	1	2	0	2	1	0	1	1	0	111	46	4	7	0	0	234	113	347
US	91	62	11	7	0	1	3	2	4	2	1	0	1	0	92	53	66	55	0	0	269	182	451
NZ	97	50	46	13	0	0	4	0	27	6	5	1	5	0	114	64	17	10	0	0	315	144	459
UK	20	17	6	2	0	0	0	0	1	0	0	0	2	0	21	7	4	9	0	0	54	35	89
Japan	34	2	8	0	8	4	2	1	0	0	0	0	3	0	69	24	17	10	0	0	141	41	182
Germany	7	4	2	2	1	0	1	0	0	0	0	0	0	0	10	5	2	4	0	0	23	15	38
Canada	3	4	2	0	0	0	1	0	0	0	0	0	1	0	15	7	9	6	0	0	31	17	48
Oth.Pacific	23	20	9	10	3	2	3	0	27	2	1	1	4	0	113	35	15	15	0	0	198	85	283
Vanuatu	39	10	6	3	1	2	0	0	10	1	0	0	1	0	51	12	5	13	0	0	113	41	154
Hong Kong	4	2	5	1	2	0	1	0	0	0	0	0	0	0	5	2	11	8	0	0	28	13	41
Fiji	72	40	27	16	2	0	1	0	4	1	0	0	2	1	101	64	8	10	0	0	217	132	349
Oth.Asia	97	30	79	15	8	4	52	2	2	0	13	0	29	1	266	49	48	22	0	0	594	123	717
Netherlands	3	0	1	0	0	0	0	0	0	0	0	0	0	0	7	3	1	1	0	0	12	4	16
Oth.Europe	35	10	7	3	0	1	2	1	2	0	0	0	0	0	24	13	3	4	0	0	73	32	105
France	11	1	0	0	0	0	0	0	0	0	0	0	0	0	12	6	2	2	0	0	25	9	34
Italy	1	0	1	0	0	0	0	0	0	0	0	0	1	0	4	1	2	1	0	0	9	2	11
China	40	11	51	14	1	3	19	6	0	1	2	0	3	0	70	27	38	9	0	0	224	71	295
Oth.Country	22	10	10	3	0	0	2	0	1	0	0	0	2	0	48	12	3	7	0	0	88	32	120
Not stated	0	0	0	0	0	0	0	0	0	0	0	0	0	0	0	0	2	0	0	0	2	-	2
<b>Total</b>	<b>1,211</b>	<b>734</b>	<b>498</b>	<b>177</b>	<b>34</b>	<b>29</b>	<b>109</b>	<b>17</b>	<b>132</b>	<b>26</b>	<b>37</b>	<b>4</b>	<b>134</b>	<b>3</b>	<b>1,732</b>	<b>801</b>	<b>426</b>	<b>320</b>	<b>1</b>	<b>0</b>	<b>4,314</b>	<b>2,111</b>	<b>6,425</b>

Country of Usual Residence	Professional and Technical		Administration and Managerial		Clerical & Related Work		Sales Worker		Service Worker		Agriculture Forestry Fishery		Production & Related Work		Other		No Work		Not Stated		Total		
	M	F	M	F	M	F	M	F	M	F	M	F	M	F	M	F	M	F	M	F	M	F	All
Australia	19.9	15.5	7.1	2.8	0.3	0.4	0.6	0.2	1.9	0.4	0.6	*	2.9	*	22.3	13.8	6.3	4.7	*	0.0	62.0	38.0	100.0
PNG	22.5	12.7	10.4	3.7	0.0	0.3	0.6	0.0	0.6	0.3	0.0	0.3	0.3	0.0	32.0	13.3	1.2	2.0	0.0	0.0	67.4	32.6	100.0
US	20.2	13.7	2.4	1.6	0.0	0.2	0.7	0.4	0.9	0.4	0.2	0.0	0.2	0.0	20.4	11.8	14.6	12.2	0.0	0.0	59.6	40.4	100.0
NZ	21.1	10.9	10.0	2.8	0.0	0.0	0.9	0.0	5.9	1.3	1.1	0.2	1.1	0.0	24.8	13.9	3.7	2.2	0.0	0.0	68.6	31.4	100.0
UK	22.5	19.1	6.7	2.2	0.0	0.0	0.0	0.0	1.1	0.0	0.0	0.0	2.2	0.0	23.6	7.9	4.5	10.1	0.0	0.0	60.7	39.3	100.0
Japan	18.7	1.1	4.4	0.0	4.4	2.2	1.1	0.5	0.0	0.0	0.0	0.0	1.6	0.0	37.9	13.2	9.3	5.5	0.0	0.0	77.5	22.5	100.0
Germany	18.4	10.5	5.3	5.3	2.6	0.0	2.6	0.0	0.0	0.0	0.0	0.0	0.0	0.0	26.3	13.2	5.3	10.5	0.0	0.0	60.5	39.5	100.0
Canada	6.3	8.3	4.2	0.0	0.0	0.0	2.1	0.0	0.0	0.0	0.0	0.0	2.1	0.0	31.3	14.6	18.8	12.5	0.0	0.0	64.6	35.4	100.0
Oth.Pacific	8.1	7.1	3.2	3.5	1.1	0.7	1.1	0.0	9.5	0.7	0.4	0.4	1.4	0.0	39.9	12.4	5.3	5.3	0.0	0.0	70.0	30.0	100.0
Vanuatu	25.3	6.5	3.9	1.9	0.6	1.3	0.0	0.0	6.5	0.6	0.0	0.0	0.6	0.0	33.1	7.8	3.2	8.4	0.0	0.0	73.4	26.6	100.0
Hong Kong	9.8	4.9	12.2	2.4	4.9	0.0	2.4	0.0	0.0	0.0	0.0	0.0	0.0	0.0	12.2	4.9	26.8	19.5	0.0	0.0	68.3	31.7	100.0
Fiji	20.6	11.5	7.7	4.6	0.6	0.0	0.3	0.0	1.1	0.3	0.0	0.0	0.6	0.3	28.9	18.3	2.3	2.9	0.0	0.0	62.2	37.8	100.0
Oth.Asia	13.5	4.2	11.0	2.1	1.1	0.6	7.3	0.3	0.3	0.0	1.8	0.0	4.0	0.1	37.1	6.8	6.7	3.1	0.0	0.0	82.8	17.2	100.0
Netherlands	18.8	0.0	6.3	0.0	0.0	0.0	0.0	0.0	0.0	0.0	0.0	0.0	0.0	0.0	43.8	18.8	6.3	6.3	0.0	0.0	75.0	25.0	100.0
Oth.Europe	33.3	9.5	6.7	2.9	0.0	1.0	1.9	1.0	1.9	0.0	0.0	0.0	0.0	0.0	22.9	12.4	2.9	3.8	0.0	0.0	69.5	30.5	100.0
France	32.4	2.9	0.0	0.0	0.0	0.0	0.0	0.0	0.0	0.0	0.0	0.0	0.0	0.0	35.3	17.6	5.9	5.9	0.0	0.0	73.5	26.5	100.0
Italy	9.1	0.0	9.1	0.0	0.0	0.0	0.0	0.0	0.0	0.0	0.0	0.0	9.1	0.0	36.4	9.1	18.2	9.1	0.0	0.0	81.8	18.2	100.0
China	13.6	3.7	17.3	4.7	0.3	1.0	6.4	2.0	0.0	0.3	0.7	0.0	1.0	0.0	23.7	9.2	12.9	3.1	0.0	0.0	75.9	24.1	100.0
Oth.Country	18.3	8.3	8.3	2.5	0.0	0.0	1.7	0.0	0.8	0.0	0.0	0.0	1.7	0.0	40.0	10.0	2.5	5.8	0.0	0.0	73.3	26.7	100.0
Not stated	0.0	0.0	0.0	0.0	0.0	0.0	0.0	0.0	0.0	0.0	0.0	0.0	0.0	0.0	0.0	0.0	100.0	0.0	0.0	0.0	100.0	0.0	100.0
<b>Total</b>	<b>18.8</b>	<b>11.4</b>	<b>7.8</b>	<b>2.8</b>	<b>0.5</b>	<b>0.5</b>	<b>1.7</b>	<b>0.3</b>	<b>2.1</b>	<b>0.4</b>	<b>0.6</b>	<b>0.1</b>	<b>2.1</b>	<b>0.0</b>	<b>27.0</b>	<b>12.5</b>	<b>6.6</b>	<b>5.0</b>	<b>0.0</b>	<b>0.0</b>	<b>67.1</b>	<b>32.9</b>	<b>100.0</b>

\*: 0 < \* < 0.05; value is between 0 and 0.05

Chart 7: Visitors Arrival by Occupation by Sex, 2<sup>nd</sup> Quarter 2017

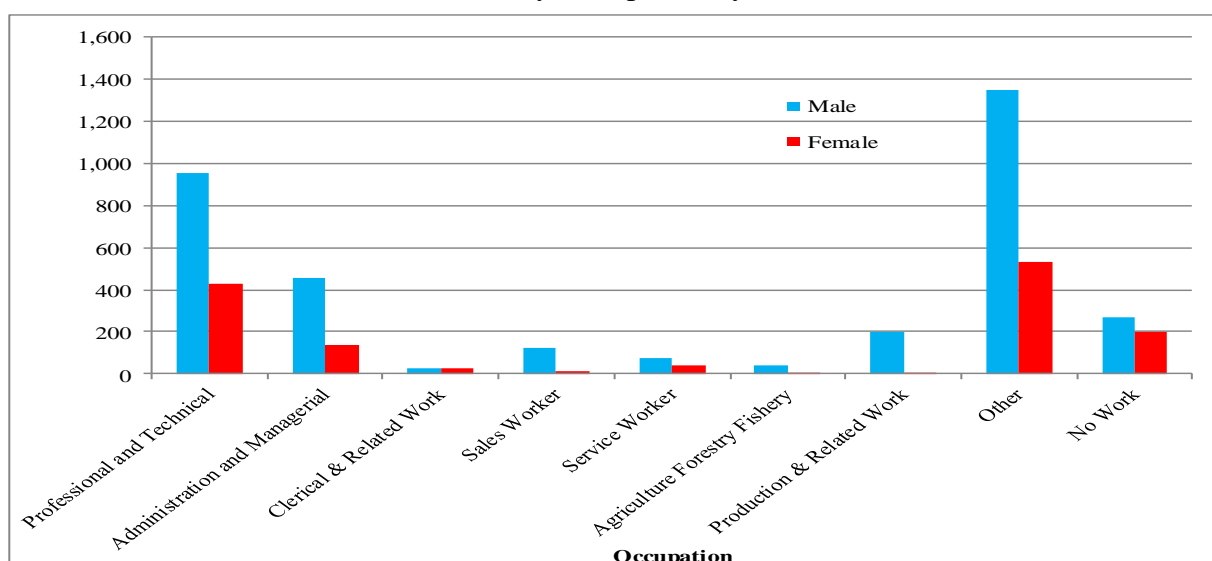
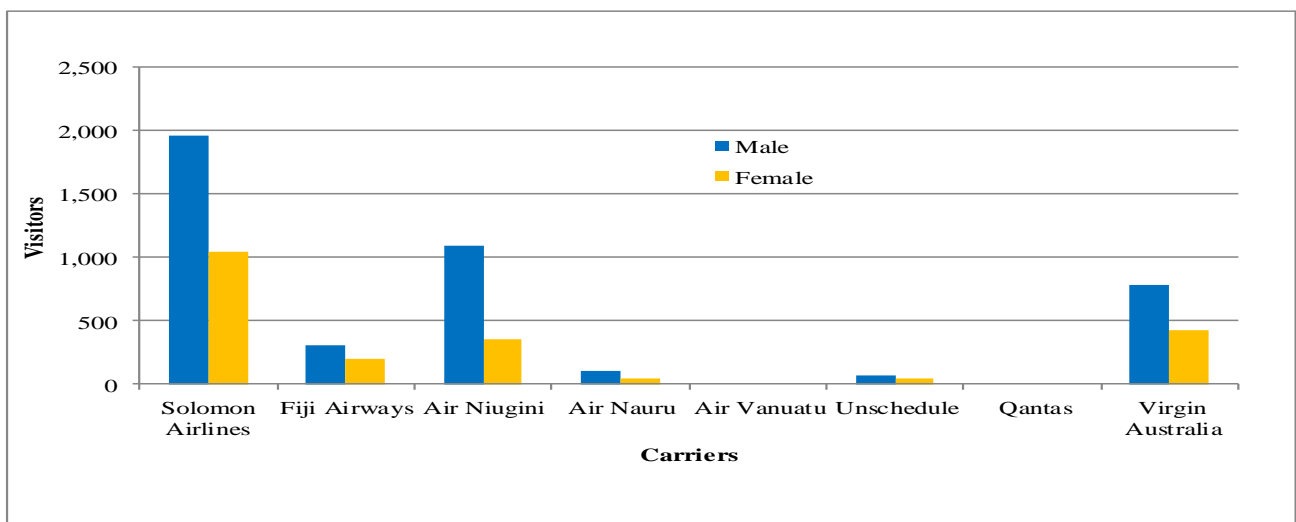


Table 8: Visitor Arrivals by Country of Residence by Carrier by Sex: 2<sup>nd</sup> Quarter 2017

Country of Usual Residence	Solomon Airlines		Fiji Airways		Air Niugini		Air Nauru		Air Vanuatu		Unschedule		Qantas		Virgin Australia		Total			
	M	F	M	F	M	F	M	F	M	F	M	F	M	F	M	F	M	F	All	
	Australia	1130	693	12	8	68	31	12	5	0	0	12	10	0	0	430	273	1,664	1,020	2,684
PNG	14	10	3	3	213	99	3	0	0	0	0	0	0	1	1	234	113	347		
US	94	55	92	68	31	17	2	4	0	0	11	16	0	0	39	22	269	182	451	
NZ	142	57	10	4	23	10	1	1	0	0	19	8	0	0	120	64	315	144	459	
UK	21	19	4	1	9	4	2	0	0	0	1	0	0	0	17	11	54	35	89	
Japan	46	13	4	2	84	22	0	0	0	0	1	1	0	0	6	3	141	41	182	
Germany	9	6	0	1	6	5	0	0	0	0	0	0	0	0	8	3	23	15	38	
Canada	17	10	5	3	3	1	0	0	0	0	1	1	0	0	5	2	31	17	48	
Oth.Pacific	50	19	31	19	34	8	74	28	0	0	5	5	0	0	4	6	198	85	283	
Vanuatu	59	32	1	0	53	8	0	0	0	0	0	0	0	0	0	1	113	41	154	
Hong Kong	9	3	1	0	14	10	0	0	0	0	0	0	0	0	4	0	28	13	41	
Fiji	70	39	103	76	38	16	2	0	0	0	1	1	0	0	3	0	217	132	349	
Oth.Asia	213	52	18	5	270	44	3	2	0	0	0	0	0	0	90	20	594	123	717	
Netherlands	7	3	0	0	2	0	0	0	0	0	0	0	0	0	3	1	12	4	16	
Oth.Europe	24	10	1	2	24	12	0	0	0	0	8	4	0	0	16	4	73	32	105	
France	5	3	0	0	10	6	0	0	0	0	0	0	0	0	10	0	25	9	34	
Italy	6	1	0	0	3	1	0	0	0	0	0	0	0	0	0	0	9	2	11	
China	21	6	16	4	171	57	1	2	0	0	1	0	0	0	14	2	224	71	295	
Oth.Country	30	16	6	1	36	7	0	0	0	0	5	1	0	0	11	7	88	32	120	
Not stated	0	0	1	0	1	0	0	0	0	0	0	0	0	0	0	0	2	-	2	
<b>Total</b>	<b>1,967</b>	<b>1,047</b>	<b>308</b>	<b>197</b>	<b>1,093</b>	<b>358</b>	<b>100</b>	<b>42</b>	<b>0</b>	<b>0</b>	<b>65</b>	<b>47</b>	<b>0</b>	<b>0</b>	<b>781</b>	<b>420</b>	<b>4,314</b>	<b>2,111</b>	<b>6,425</b>	
	<b>Percentage</b>																			
Australia	42.1	25.8	0.4	0.3	2.5	1.2	0.4	0.2	0.0	0.0	0.4	0.4	0.0	0.0	16.0	10.2	62.0	38.0	100.0	
PNG	4.0	2.9	0.9	0.9	61.4	28.5	0.9	0.0	0.0	0.0	0.0	0.0	0.0	0.0	0.3	0.3	67.4	32.6	100.0	
US	20.8	12.2	20.4	15.1	6.9	3.8	0.4	0.9	0.0	0.0	2.4	3.5	0.0	0.0	8.6	4.9	59.6	40.4	100.0	
NZ	30.9	12.4	2.2	0.9	5.0	2.2	0.2	0.2	0.0	0.0	4.1	1.7	0.0	0.0	26.1	13.9	68.6	31.4	100.0	
UK	23.6	21.3	4.5	1.1	10.1	4.5	2.2	0.0	0.0	0.0	1.1	0.0	0.0	0.0	19.1	12.4	60.7	39.3	100.0	
Japan	25.3	7.1	2.2	1.1	46.2	12.1	0.0	0.0	0.0	0.0	0.5	0.5	0.0	0.0	3.3	1.6	77.5	22.5	100.0	
Germany	23.7	15.8	0.0	2.6	15.8	13.2	0.0	0.0	0.0	0.0	0.0	0.0	0.0	0.0	21.1	7.9	60.5	39.5	100.0	
Canada	35.4	20.8	10.4	6.3	6.3	2.1	0.0	0.0	0.0	0.0	2.1	2.1	0.0	0.0	10.4	4.2	64.6	35.4	100.0	
Oth.Pacific	17.7	6.7	11.0	6.7	12.0	2.8	26.1	9.9	0.0	0.0	1.8	1.8	0.0	0.0	1.4	2.1	70.0	30.0	100.0	
Vanuatu	38.3	20.8	0.6	0.0	34.4	5.2	0.0	0.0	0.0	0.0	0.0	0.0	0.0	0.0	0.0	0.6	73.4	26.6	100.0	
Hong Kong	22.0	7.3	2.4	0.0	34.1	24.4	0.0	0.0	0.0	0.0	0.0	0.0	0.0	0.0	9.8	0.0	68.3	31.7	100.0	
Fiji	20.1	11.2	29.5	21.8	10.9	4.6	0.6	0.0	0.0	0.0	0.3	0.3	0.0	0.0	0.9	0.0	62.2	37.8	100.0	
Oth.Asia	29.7	7.3	2.5	0.7	37.7	6.1	0.4	0.3	0.0	0.0	0.0	0.0	0.0	0.0	12.6	2.8	82.8	17.2	100.0	
Netherlands	43.8	18.8	0.0	0.0	12.5	0.0	0.0	0.0	0.0	0.0	0.0	0.0	0.0	0.0	18.8	6.3	75.0	25.0	100.0	
Oth.Europe	22.9	9.5	1.0	1.9	22.9	11.4	0.0	0.0	0.0	0.0	7.6	3.8	0.0	0.0	15.2	3.8	69.5	30.5	100.0	
France	14.7	8.8	0.0	0.0	29.4	17.6	0.0	0.0	0.0	0.0	0.0	0.0	0.0	0.0	29.4	0.0	73.5	26.5	100.0	
Italy	54.5	9.1	0.0	0.0	27.3	9.1	0.0	0.0	0.0	0.0	0.0	0.0	0.0	0.0	0.0	0.0	81.8	18.2	100.0	
China	7.1	2.0	5.4	1.4	58.0	19.3	0.3	0.7	0.0	0.0	0.3	0.0	0.0	0.0	4.7	0.7	75.9	24.1	100.0	
Oth.Country	25.0	13.3	5.0	0.8	30.0	5.8	0.0	0.0	0.0	0.0	4.2	0.8	0.0	0.0	9.2	5.8	73.3	26.7	100.0	
Not stated	0.0	0.0	50.0	0.0	50.0	0.0	0.0	0.0	0.0	0.0	0.0	0.0	0.0	0.0	0.0	0.0	100.0	0.0	100.0	
<b>Total</b>	<b>30.6</b>	<b>16.3</b>	<b>4.8</b>	<b>3.1</b>	<b>17.0</b>	<b>5.6</b>	<b>1.6</b>	<b>0.7</b>	<b>0.0</b>	<b>0.0</b>	<b>1.0</b>	<b>0.7</b>	<b>0.0</b>	<b>0.0</b>	<b>12.2</b>	<b>6.5</b>	<b>67.1</b>	<b>32.9</b>	<b>100.0</b>	

Chart 8: Visitor Arrivals by Carrier by Sex, 2<sup>nd</sup> Quarter 2017



## Appendix 1

### Concepts and Definitions

Persons entering Solomon Islands classify themselves into three (3) categories; returning resident, intending resident, and visitor. The concepts and definitions of the various categories are as follows:

#### *(i) Returning residents*

- Solomon Islanders and non-Solomon Islanders who have left the country and are returning to continue their residence.
- Non Solomon Islanders includes resident permit holders and Diplomatic officials, and their immediate family members. This may also includes legal or official arrangements that fall out side of the above.

#### *(ii) Intending residents*

- Non-Solomon Islander who wish to take up residence in Solomon Islands.

#### *(iii) Visitors*

- Any traveller who is not a Solomon Islander and who purposely spend less time – at most a period of 120 days<sup>2</sup>, in the country and with the intention and purpose of visiting.
- *Tourist*
  - Visitors who further classify themselves stating their visit are purposely for ‘*holiday and vacation*’. This exclude, tourist arrivals by cruise ships.
  - Wife accompanying husband on business purpose is a private tourist unless also working.
  - *World Tourism Organization WTO definition of Tourism:*  
*It comprises the activities of persons travelling to and staying in places outside their usual environment for not more than one consecutive year for leisure, business and other purposes not related to the exercise of an activity remunerated from within the place visited*<sup>3</sup>.

#### *(iv) Markets*

- *Country of Usual Residence*

---

<sup>2</sup> Solomon Islands 1993 Statistical Yearbook.

<sup>3</sup> Dimensions of Hospitality, Study guide 1. p17

Table 9: Intending Resident Arrivals by Country of Residence by Occupation by Sex: 2<sup>nd</sup> Quarter 2017

Country of Usual Residence	Professional and Technical		Administration and Managerial		Clerical & Related Work		Sales Worker		Service Worker		Agriculture Forestry Fishery		Production & Related Work		Other		No Work		Total		
	M	F	M	F	M	F	M	F	M	F	M	F	M	F	M	F	M	F	M	F	All
Australia	2	1	0	0	0	1	0	1	0	1	1	0	0	0	0	0	0	0	3	4	7
PNG	0	0	0	0	1	0	0	0	1	0	0	0	0	0	0	0	1	0	3	0	3
US	0	0	0	0	0	0	0	0	0	0	0	0	0	0	0	0	0	0	0	0	0
NZ	0	0	0	0	0	0	1	0	1	1	1	0	0	0	0	0	0	0	3	1	4
UK	0	0	0	0	0	0	0	0	0	0	0	0	0	0	0	0	0	0	0	0	0
Japan	0	0	0	0	0	0	0	0	0	0	0	0	1	0	0	0	0	0	1	0	1
Germany	0	0	0	0	1	1	0	0	0	0	0	0	0	0	0	0	1	0	2	1	3
Canada	0	0	0	0	0	0	0	0	0	0	0	0	0	0	0	0	0	0	0	0	0
Oth.Pacific	1	2	0	0	0	0	1	2	0	0	0	0	0	0	0	0	0	0	2	4	6
Vanuatu	0	0	0	0	0	1	0	0	0	0	0	0	0	0	0	0	0	0	0	1	1
Hong Kong	0	0	0	0	0	0	0	0	0	0	0	0	0	0	0	0	0	0	0	0	0
Fiji	0	1	0	0	0	0	0	0	0	0	0	0	0	0	0	0	0	0	0	1	1
Oth.Asia	0	0	1	0	10	3	17	1	11	1	5	3	2	0	0	0	4	2	50	10	60
Netherlands	0	0	0	0	0	0	0	0	0	0	0	0	0	0	0	0	0	0	0	0	0
Oth.Europe	0	0	0	0	0	0	0	0	0	0	0	0	0	0	0	0	0	0	0	0	0
France	0	0	0	0	0	0	0	0	0	0	0	0	0	0	0	0	0	0	0	0	0
Italy	0	0	0	0	0	0	0	0	0	0	0	0	0	0	0	0	0	0	0	0	0
China	0	1	1	2	5	4	1	3	5	0	0	0	0	0	0	0	1	0	13	10	23
Oth.Country	0	0	1	0	1	0	0	0	0	0	0	0	0	0	0	0	0	0	2	0	2
Total	3	5	3	2	18	11	20	7	18	3	7	3	3	0	0	0	7	2	79	33	112
	<u>Percentage</u>																				
Australia	0.0	0.0	14.3	14.3	0.0	0.0	0.0	0.0	0.0	0.0	0.0	0.0	0.0	0.0	42.9	28.6	0.0	42.9	57.1	100.0	
PNG	66.7	0.0	33.3	0.0	0.0	0.0	0.0	0.0	0.0	0.0	0.0	0.0	0.0	0.0	0.0	0.0	0.0	100.0	0.0	100.0	
US	0.0	0.0	0.0	0.0	0.0	0.0	0.0	0.0	0.0	0.0	0.0	0.0	0.0	0.0	0.0	0.0	0.0	0.0	0.0	0.0	
NZ	50.0	0.0	0.0	0.0	0.0	0.0	0.0	0.0	0.0	0.0	0.0	0.0	0.0	25.0	25.0	0.0	0.0	75.0	25.0	100.0	
UK	0.0	0.0	0.0	0.0	0.0	0.0	0.0	0.0	0.0	0.0	0.0	0.0	0.0	0.0	0.0	0.0	0.0	0.0	0.0	0.0	
Japan	0.0	0.0	0.0	0.0	0.0	0.0	0.0	0.0	0.0	0.0	0.0	0.0	0.0	100.0	0.0	0.0	0.0	100.0	0.0	100.0	
Germany	0.0	0.0	0.0	0.0	0.0	0.0	0.0	0.0	0.0	0.0	0.0	0.0	0.0	33.3	33.3	33.3	0.0	66.7	33.3	100.0	
Canada	0.0	0.0	0.0	0.0	0.0	0.0	0.0	0.0	0.0	0.0	0.0	0.0	0.0	0.0	0.0	0.0	0.0	0.0	0.0	0.0	
Oth.Pacific	16.7	33.3	0.0	0.0	0.0	0.0	0.0	0.0	0.0	0.0	0.0	0.0	0.0	0.0	16.7	16.7	16.7	33.3	66.7	100.0	
Vanuatu	0.0	100.0	0.0	0.0	0.0	0.0	0.0	0.0	0.0	0.0	0.0	0.0	0.0	0.0	0.0	0.0	0.0	0.0	100.0	100.0	
Hong Kong	0.0	0.0	0.0	0.0	0.0	0.0	0.0	0.0	0.0	0.0	0.0	0.0	0.0	0.0	0.0	0.0	0.0	0.0	0.0	0.0	
Fiji	0.0	100.0	0.0	0.0	0.0	0.0	0.0	0.0	0.0	0.0	0.0	0.0	0.0	0.0	0.0	0.0	0.0	0.0	100.0	100.0	
Oth.Asia	3.3	0.0	11.7	0.0	0.0	0.0	3.3	0.0	0.0	0.0	5.0	8.3	0.0	45.0	6.7	6.7	10.0	83.3	16.7	100.0	
Netherlands	0.0	0.0	0.0	0.0	0.0	0.0	0.0	0.0	0.0	0.0	0.0	0.0	0.0	0.0	0.0	0.0	0.0	0.0	0.0	0.0	
Oth.Europe	0.0	0.0	0.0	0.0	0.0	0.0	0.0	0.0	0.0	0.0	0.0	0.0	0.0	0.0	0.0	0.0	0.0	0.0	0.0	0.0	
France	0.0	0.0	0.0	0.0	0.0	0.0	0.0	0.0	0.0	0.0	0.0	0.0	0.0	0.0	0.0	0.0	0.0	0.0	0.0	0.0	
Italy	0.0	0.0	0.0	0.0	0.0	0.0	0.0	0.0	0.0	0.0	0.0	0.0	0.0	0.0	0.0	0.0	0.0	0.0	0.0	0.0	
China	4.3	17.4	21.7	4.3	0.0	4.3	4.3	8.7	4.3	0.0	0.0	0.0	0.0	4.3	4.3	17.4	4.3	56.5	43.5	100.0	
Oth.Country	50.0	0.0	50.0	0.0	0.0	0.0	0.0	0.0	0.0	0.0	0.0	0.0	0.0	0.0	0.0	0.0	0.0	100.0	0.0	100.0	
Total	8.0	7.1	13.4	1.8	0.0	0.9	2.7	1.8	0.9	0.0	2.7	0.0	4.5	0.0	27.7	10.7	10.7	70.5	29.5	100.0	

Table 10: Intending Resident Arrivals by Country of Residence by Age Groups by Sex: 2<sup>nd</sup> Quarter 2017

Country of Usual Residence	Age-Group																		Total		
	0-14		15-24		25-34		35-44		45-54		55-64		65+		Not Stated		M	F	All		
	M	F	M	F	M	F	M	F	M	F	M	F	M	F							
Australia	2	1	0	0	0	1	0	1	0	1	1	0	0	0	0	0	0	3	4	7	
PNG	0	0	0	0	1	0	0	0	1	0	0	0	0	0	0	1	0	3	0	3	
US	0	0	0	0	0	0	0	0	0	0	0	0	0	0	0	0	0	0	0	0	
NZ	0	0	0	0	0	0	1	0	1	1	1	0	0	0	0	0	0	3	1	4	
UK	0	0	0	0	0	0	0	0	0	0	0	0	0	0	0	0	0	0	0	0	
Japan	0	0	0	0	0	0	0	0	0	0	0	0	1	0	0	0	1	0	1	1	
Germany	0	0	0	0	1	1	0	0	0	0	0	0	0	0	1	0	2	1	3	3	
Canada	0	0	0	0	0	0	0	0	0	0	0	0	0	0	0	0	0	0	0	0	
Oth.Pacific	1	2	0	0	0	0	1	2	0	0	0	0	0	0	0	0	2	4	6	6	
Vanuatu	0	0	0	0	0	1	0	0	0	0	0	0	0	0	0	0	0	1	1	1	
Hong Kong	0	0	0	0	0	0	0	0	0	0	0	0	0	0	0	0	0	0	0	0	
Fiji	0	1	0	0	0	0	0	0	0	0	0	0	0	0	0	0	0	1	1	1	
Oth.Asia	0	0	1	0	10	3	17	1	11	1	5	3	2	0	4	2	50	10	60	60	
Netherlands	0	0	0	0	0	0	0	0	0	0	0	0	0	0	0	0	0	0	0	0	
Oth.Europe	0	0	0	0	0	0	0	0	0	0	0	0	0	0	0	0	0	0	0	0	
France	0	0	0	0	0	0	0	0	0	0	0	0	0	0	0	0	0	0	0	0	
Italy	0	0	0	0	0	0	0	0	0	0	0	0	0	0	0	0	0	0	0	0	
China	0	1	1	2	5	4	1	3	5	0	0	0	0	0	1	0	13	10	23	23	
Oth.Country	0	0	1	0	1	0	0	0	0	0	0	0	0	0	0	0	2	0	2	2	
<b>Total</b>	<b>3</b>	<b>5</b>	<b>3</b>	<b>2</b>	<b>18</b>	<b>11</b>	<b>20</b>	<b>7</b>	<b>18</b>	<b>3</b>	<b>7</b>	<b>3</b>	<b>3</b>	<b>0</b>	<b>7</b>	<b>2</b>	<b>79</b>	<b>33</b>	<b>112</b>	<b>112</b>	
	<b>Percentage</b>																				
Australia	28.6	14.3	0.0	0.0	0.0	14.3	0.0	14.3	0.0	14.3	14.3	0.0	0.0	0.0	0.0	0.0	42.9	57.1	100.0	100.0	
PNG	0.0	0.0	0.0	0.0	33.3	0.0	0.0	0.0	33.3	0.0	0.0	0.0	0.0	0.0	33.3	0.0	100.0	0.0	100.0	100.0	
US	0.0	0.0	0.0	0.0	0.0	0.0	0.0	0.0	0.0	0.0	0.0	0.0	0.0	0.0	0.0	0.0	0.0	0.0	0.0	0.0	
NZ	0.0	0.0	0.0	0.0	0.0	0.0	25.0	0.0	25.0	25.0	25.0	0.0	0.0	0.0	0.0	0.0	75.0	25.0	100.0	100.0	
UK	0.0	0.0	0.0	0.0	0.0	0.0	0.0	0.0	0.0	0.0	0.0	0.0	0.0	0.0	0.0	0.0	0.0	0.0	0.0	0.0	
Japan	0.0	0.0	0.0	0.0	0.0	0.0	0.0	0.0	0.0	0.0	0.0	0.0	100.0	0.0	0.0	0.0	100.0	0.0	100.0	100.0	
Germany	0.0	0.0	0.0	0.0	33.3	33.3	0.0	0.0	0.0	0.0	0.0	0.0	0.0	0.0	33.3	0.0	66.7	33.3	100.0	100.0	
Canada	0.0	0.0	0.0	0.0	0.0	0.0	0.0	0.0	0.0	0.0	0.0	0.0	0.0	0.0	0.0	0.0	0.0	0.0	0.0	0.0	
Oth.Pacific	16.7	33.3	0.0	0.0	0.0	0.0	16.7	33.3	0.0	0.0	0.0	0.0	0.0	0.0	0.0	0.0	33.3	66.7	100.0	100.0	
Vanuatu	0.0	0.0	0.0	0.0	0.0	100.0	0.0	0.0	0.0	0.0	0.0	0.0	0.0	0.0	0.0	0.0	0.0	100.0	100.0	100.0	
Hong Kong	0.0	0.0	0.0	0.0	0.0	0.0	0.0	0.0	0.0	0.0	0.0	0.0	0.0	0.0	0.0	0.0	0.0	0.0	0.0	0.0	
Fiji	0.0	100.0	0.0	0.0	0.0	0.0	0.0	0.0	0.0	0.0	0.0	0.0	0.0	0.0	0.0	0.0	0.0	100.0	100.0	100.0	
Oth.Asia	0.0	0.0	1.7	0.0	16.7	5.0	28.3	1.7	18.3	1.7	8.3	5.0	3.3	0.0	6.7	3.3	83.3	16.7	100.0	100.0	
Netherlands	0.0	0.0	0.0	0.0	0.0	0.0	0.0	0.0	0.0	0.0	0.0	0.0	0.0	0.0	0.0	0.0	0.0	0.0	0.0	0.0	
Oth.Europe	0.0	0.0	0.0	0.0	0.0	0.0	0.0	0.0	0.0	0.0	0.0	0.0	0.0	0.0	0.0	0.0	0.0	0.0	0.0	0.0	
France	0.0	0.0	0.0	0.0	0.0	0.0	0.0	0.0	0.0	0.0	0.0	0.0	0.0	0.0	0.0	0.0	0.0	0.0	0.0	0.0	
Italy	0.0	0.0	0.0	0.0	0.0	0.0	0.0	0.0	0.0	0.0	0.0	0.0	0.0	0.0	0.0	0.0	0.0	0.0	0.0	0.0	
China	0.0	4.3	4.3	8.7	21.7	17.4	4.3	13.0	21.7	0.0	0.0	0.0	0.0	0.0	4.3	0.0	56.5	43.5	100.0	100.0	
Oth.Country	0.0	0.0	50.0	0.0	50.0	0.0	0.0	0.0	0.0	0.0	0.0	0.0	0.0	0.0	0.0	0.0	100.0	0.0	100.0	100.0	
<b>Total</b>	<b>2.7</b>	<b>4.5</b>	<b>2.7</b>	<b>1.8</b>	<b>16.1</b>	<b>9.8</b>	<b>17.9</b>	<b>6.3</b>	<b>16.1</b>	<b>2.7</b>	<b>6.3</b>	<b>2.7</b>	<b>2.7</b>	<b>0.0</b>	<b>6.3</b>	<b>1.8</b>	<b>70.5</b>	<b>29.5</b>	<b>100.0</b>	<b>100.0</b>	



Table 11: Returning Resident Arrivals by Country of Residence by Age Groups by Sex: 2<sup>nd</sup> Quarter 2017

Country of Usual Residence	Age-Group																		Total	All
	0-14		15-24		25-34		35-44		45-54		55-64		65+		Not Stated		M	F		
	M	F	M	F	M	F	M	F	M	F	M	F	M	F	M	F				
Australia	0	0	0	0	0	0	0	0	0	0	0	0	0	0	0	0	0	0	0	
PNG	0	0	0	0	0	0	0	0	0	0	0	0	0	0	0	0	0	0	0	
US	0	0	0	0	0	0	0	0	0	0	0	0	0	0	0	0	0	0	0	
NZ	0	0	0	0	0	0	0	0	0	0	0	0	0	0	0	0	0	0	0	
UK	0	0	0	0	0	0	0	0	0	0	0	0	0	0	0	0	0	0	0	
Japan	0	0	0	0	1	1	0	0	0	0	0	0	0	0	1	0	2	1	3	
Germany	0	0	0	0	0	0	0	0	0	0	0	0	0	0	0	0	0	0	0	
Canada	0	0	0	0	0	0	0	0	0	0	0	0	0	0	0	0	0	0	0	
Oth.Pacific	0	0	0	0	0	0	0	0	0	0	0	0	0	0	0	0	0	0	0	
Vanuatu	0	0	0	0	0	0	0	0	0	0	0	0	0	0	0	0	0	0	0	
Hong Kong	0	0	0	0	0	0	0	0	0	0	0	0	0	0	0	0	0	0	0	
Fiji	0	0	0	0	0	1	0	0	0	0	0	0	0	0	0	0	0	1	1	
Oth.Asia	0	0	0	0	0	0	0	0	0	0	0	0	0	0	1	0	1	0	1	
Netherlands	0	0	0	0	0	0	0	0	0	0	0	0	0	0	0	0	0	0	0	
Oth.Europe	0	0	0	0	0	0	0	0	0	0	0	0	0	0	0	0	0	0	0	
France	0	0	0	0	0	0	0	0	0	0	0	0	0	0	0	0	0	0	0	
Italy	0	0	0	0	0	0	0	0	0	0	0	0	0	0	0	0	0	0	0	
China	0	0	0	0	0	0	0	0	0	0	0	0	0	0	0	0	0	0	0	
Oth.Country	0	0	0	0	0	0	0	0	0	0	0	0	0	0	0	0	0	0	0	
Solomon Is.	176	139	316	296	996	513	991	509	871	346	403	139	111	40	373	180	4,237	2,162	6,399	
Total	176	139	316	296	997	515	991	509	871	346	403	139	111	40	375	180	4,240	2,164	6,404	
<u>Percentage</u>																				
Australia	0	0	0	0	0	0	0	0	0	0	0	0	0	0	0	0	0	0	0	
PNG	0	0	0	0	0	0	0	0	0	0	0	0	0	0	0	0	0	0	0	
US	0	0	0	0	0	0	0	0	0	0	0	0	0	0	0	0	0	0	0	
NZ	0	0	0	0	0	0	0	0	0	0	0	0	0	0	0	0	0	0	0	
UK	0	0	0	0	0	0	0	0	0	0	0	0	0	0	0	0	0	0	0	
Japan	0	0	0	0	33.3	33.3	0	0	0	0	0	0	0	0	33.3	0	67	33	100	
Germany	0	0	0	0	0	0	0	0	0	0	0	0	0	0	0	0	0	0	0	
Canada	0	0	0	0	0	0	0	0	0	0	0	0	0	0	0	0	0	0	0	
Oth.Pacific	0	0	0	0	0	0	0	0	0	0	0	0	0	0	0	0	0	0	0	
Vanuatu	0	0	0	0	0	0	0	0	0	0	0	0	0	0	0	0	0	0	0	
Hong Kong	0	0	0	0	0	0	0	0	0	0	0	0	0	0	0	0	0	0	0	
Fiji	0	0	0	0	0	100	0	0	0	0	0	0	0	0	0	0	0	100	100	
Oth.Asia	0	0	0	0	0	0	0	0	0	0	0	0	0	0	100	0	100	0	100	
Netherlands	0	0	0	0	0	0	0	0	0	0	0	0	0	0	0	0	0	0	0	
Oth.Europe	0	0	0	0	0	0	0	0	0	0	0	0	0	0	0	0	0	0	0	
France	0	0	0	0	0	0	0	0	0	0	0	0	0	0	0	0	0	0	0	
Italy	0	0	0	0	0	0	0	0	0	0	0	0	0	0	0	0	0	0	0	
China	0	0	0	0	0	0	0	0	0	0	0	0	0	0	0	0	0	0	0	
Oth.Country	0	0	0	0	0	0	0	0	0	0	0	0	0	0	0	0	0	0	0	
Solomon Is.	2.80	2.20	4.90	4.60	15.60	8.00	15.50	8.00	13.60	5.40	6.30	2.20	1.70	0.60	5.80	2.80	66.20	33.80	100	
Total	2.7	2.2	4.9	4.6	15.6	8	15.5	7.9	13.6	5.4	6.3	2.2	1.7	0.6	5.9	2.8	66.2	33.8	100	

Table 12: Returning Resident Arrivals by Country of Residence by Occupation by Sex: 2<sup>nd</sup> Quarter 2017

Country of Usual Residence	Professional and Technical		Administration and Managerial		Clerical & Related Work		Sales Worker		Service Worker		Agriculture Forestry Fishery		Production & Related Work		Other		No Work		Total		All
	M	F	M	F	M	F	M	F	M	F	M	F	M	F	M	F	M	F	M	F	
Australia	0	0	0	0	0	0	0	0	0	0	0	0	0	0	0	0	0	0	0	0	0
PNG	0	0	0	0	0	0	0	0	0	0	0	0	0	0	0	0	0	0	0	0	0
US	0	0	0	0	0	0	0	0	0	0	0	0	0	0	0	0	0	0	0	0	0
NZ	0	0	0	0	0	0	0	0	0	0	0	0	0	0	0	0	0	0	0	0	0
UK	0	0	0	0	0	0	0	0	0	0	0	0	0	0	0	0	0	0	0	0	0
Japan	2	1	0	0	0	0	0	0	0	0	0	0	0	0	0	0	0	0	2	1	3
Germany	0	0	0	0	0	0	0	0	0	0	0	0	0	0	0	0	0	0	0	0	0
Canada	0	0	0	0	0	0	0	0	0	0	0	0	0	0	0	0	0	0	0	0	0
Oth.Pacific	0	0	0	0	0	0	0	0	0	0	0	0	0	0	0	0	0	0	0	0	0
Vanuatu	0	0	0	0	0	0	0	0	0	0	0	0	0	0	0	0	0	0	0	0	0
Hong Kong	0	0	0	0	0	0	0	0	0	0	0	0	0	0	0	0	0	0	0	0	0
Fiji	0	1	0	0	0	0	0	0	0	0	0	0	0	0	0	0	0	0	0	1	1
Oth.Asia	0	0	1	0	0	0	0	0	0	0	0	0	0	0	0	0	0	0	1	0	1
Netherlands	0	0	0	0	0	0	0	0	0	0	0	0	0	0	0	0	0	0	0	0	0
Oth.Europe	0	0	0	0	0	0	0	0	0	0	0	0	0	0	0	0	0	0	0	0	0
France	0	0	0	0	0	0	0	0	0	0	0	0	0	0	0	0	0	0	0	0	0
Italy	0	0	0	0	0	0	0	0	0	0	0	0	0	0	0	0	0	0	0	0	0
China	0	0	0	0	0	0	0	0	0	0	0	0	0	0	0	0	0	0	0	0	0
Oth.Country	0	0	0	0	0	0	0	0	0	0	0	0	0	0	0	0	0	0	0	0	0
Solomon Is.	1,256	702	481	201	25	32	70	18	65	29	84	12	174	4	1,777	755	305	409	4,237	2,162	6,399
Total	1,258	704	482	201	25	32	70	18	65	29	84	12	174	4	1,777	755	305	409	4,240	2,164	6,404
<u>Percentage</u>																					
Australia	0	0	0	0	0	0	0	0	0	0	0	0	0	0	0	0	0	0	0	0	0
PNG	0	0	0	0	0	0	0	0	0	0	0	0	0	0	0	0	0	0	0	0	0
US	0	0	0	0	0	0	0	0	0	0	0	0	0	0	0	0	0	0	0	0	0
NZ	0	0	0	0	0	0	0	0	0	0	0	0	0	0	0	0	0	0	0	0	0
UK	0	0	0	0	0	0	0	0	0	0	0	0	0	0	0	0	0	0	0	0	0
Japan	66.7	33.3	0	0	0	0	0	0	0	0	0	0	0	0	0	0	0	0	66.7	33.3	100
Germany	0	0	0	0	0	0	0	0	0	0	0	0	0	0	0	0	0	0	0	0	0
Canada	0	0	0	0	0	0	0	0	0	0	0	0	0	0	0	0	0	0	0	0	0
Oth.Pacific	0	0	0	0	0	0	0	0	0	0	0	0	0	0	0	0	0	0	0	0	0
Vanuatu	0	0	0	0	0	0	0	0	0	0	0	0	0	0	0	0	0	0	0	0	0
Hong Kong	0	0	0	0	0	0	0	0	0	0	0	0	0	0	0	0	0	0	0	0	0
Fiji	0	100	0	0	0	0	0	0	0	0	0	0	0	0	0	0	0	0	0	100	100
Oth.Asia	0	0	100	0	0	0	0	0	0	0	0	0	0	0	0	0	0	0	100	0	100
Netherlands	0	0	0	0	0	0	0	0	0	0	0	0	0	0	0	0	0	0	0	0	0
Oth.Europe	0	0	0	0	0	0	0	0	0	0	0	0	0	0	0	0	0	0	0	0	0
France	0	0	0	0	0	0	0	0	0	0	0	0	0	0	0	0	0	0	0	0	0
Italy	0	0	0	0	0	0	0	0	0	0	0	0	0	0	0	0	0	0	0	0	0
China	0	0	0	0	0	0	0	0	0	0	0	0	0	0	0	0	0	0	0	0	0
Oth.Country	0	0	0	0	0	0	0	0	0	0	0	0	0	0	0	0	0	0	0	0	0
Solomon Is.	19.6	11	7.5	3.1	0.4	0.5	1.1	0.3	1	0.5	1.3	0.2	2.7	0.1	27.8	11.8	4.8	6.4	66.2	33.8	100
Total	19.6	11	7.5	3.1	0.4	0.5	1.1	0.3	1	0.5	1.3	0.2	2.7	0.1	27.7	11.8	4.8	6.4	66.2	33.8	100