



Solomon Islands Government

Statistical Bulletin: 08/2022

NATIONAL CONSUMER PRICE INDEX

(March 2022)

**Solomon Islands National Statistics Office
Ministry of Finance & Treasury
PO BOX G6
Honiara
Enquiries: Tel: (+677) 27835 Email: STATS-Economics@mof.gov.sb**

Released on 09/05/2021

Table of Contents

COMMENTARY	1
Table 1.0: Solomon Islands Consumer Price Index by Group (2017=100.0), Weighted Average 4 Towns.....	3
Table 1.1: Solomon Islands Consumer Price Index by Group (2017=100.0), Weighted Average 4 Towns.....	5
Table 2.0 Solomon Islands Consumer Price Index of Imported Items by Group (2017=100.0), Weighted Average 4 Towns.....	5
Table 2.1: Solomon Islands Consumer Price Index of Imported Items by Group (2017=100.0), Weighted Average 4 Towns.....	7
Table 3.0: Solomon Islands Consumer Price Index of Other Items by Group (2017=100.0), Weighted Average 4 Towns.....	8
Table 3.1: Solomon Islands Consumer Price Index of Other Items by Group (2017=100.0), Weighted Average 4 Towns.....	9
Table 4.0: Solomon Islands CPI and Measures of Underlying Inflation, Weighted Average 4 Towns	9
Table 5.0: Honiara Consumer Price Index by Group (2017=100.0).....	11
Table 5.1: Honiara Consumer Price Index by Group (2017=100.0).....	12
Table 6.0: Auki Consumer Price Index by Group (2017=100.0).....	12
Table 6.1: Auki Consumer Price Index by Group (2017=100.0).....	13
Table 7.0: Gizo Consumer Price Index by Group (2017=100.0).....	15
Table 7.1: Gizo Consumer Price Index by Group (2017=100.0).....	16
Table 8.0: Noro Consumer Price Index by Group (2017=100.0)	17
Table 8.1: Noro Consumer Price Index by Group (2017=100.0)	17
About the Bulletin.....	19
Upcoming Releases.....	19
Data Quality Statement: Consumer Price Index	20

COMMENTARY

HEADLINE CPI

The National Consumer Price Index (CPI) marginally rose 0.03 percent to 109.4 in March 2022. Through the year, compared to the same month in 2021, the National CPI dropped by 2.7 percent.

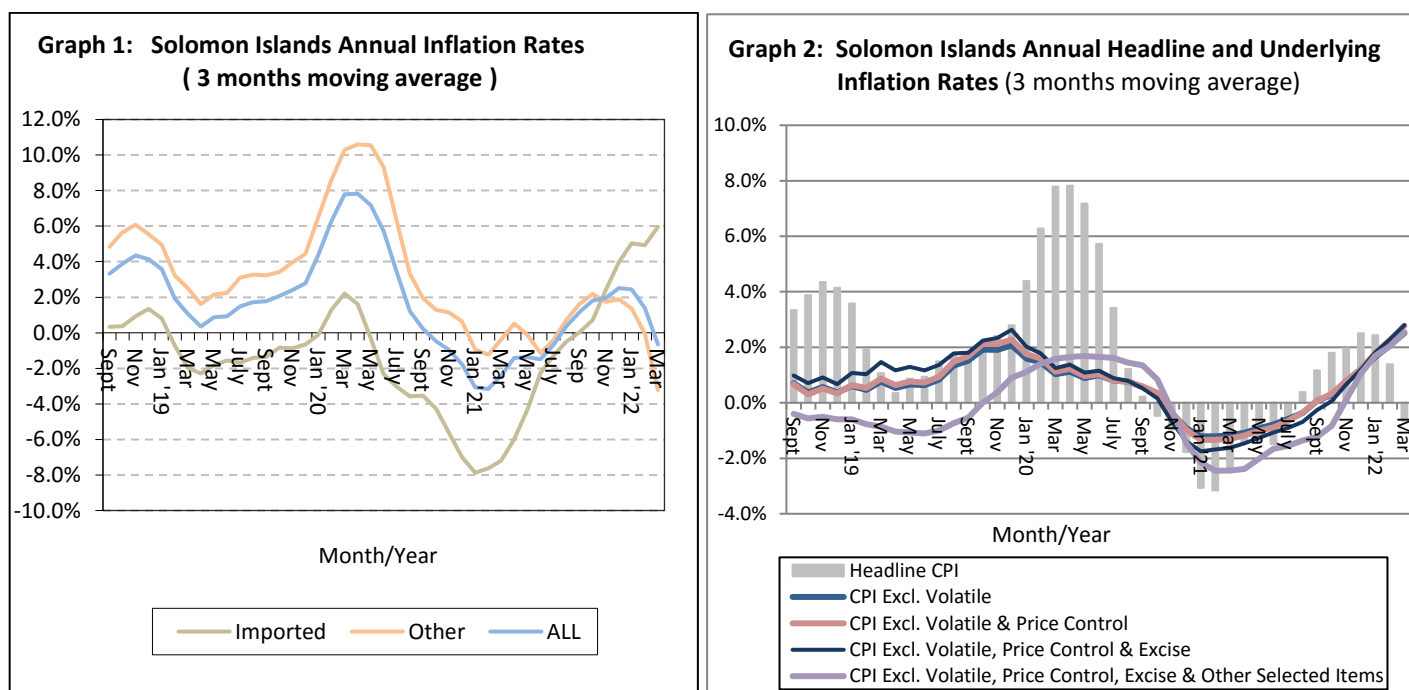
The most significant changes by major expenditure groups from the previous month include:

- Food and Non-Alcoholic Beverages: (+1.7%),
- Alcoholic beverages, tobacco and narcotics: (-7.9%),
- Housing, water, electricity, gas & other fuels: (-0.3%)
- Furnishings, household equipment & routine household maintenance: (+0.6%)
- Health: (-1.0%)
- Transport: (+4.5%)
- Miscellaneous good & services: (+0.1)

The Solomon Islands inflation rate for the month of March 2022 calculated on a 3-months moving average basis was -0.6%. The corresponding inflation rates for imported items was +6.0%, while other (domestic) items inflation rate was -3.2%.

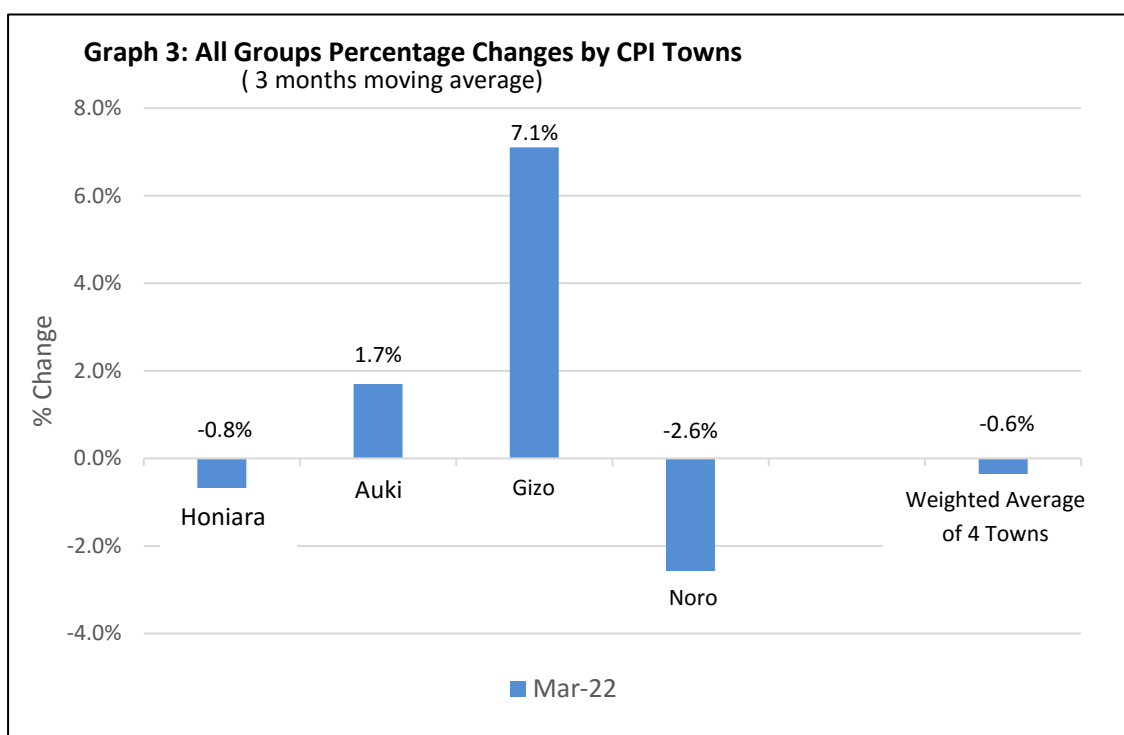
UNDERLYING INFLATION

The Solomon Islands underlying rates of inflation based on a 3-months moving average was observed between +2.5% and +2.8% for March 2022.



COMPONENT CONTRIBUTION BY CPI TOWN

The headline inflation rates for the respective provincial towns calculated on a 3-months moving average basis were: Honiara: (-0.8%); Auki: (+1.7%); Gizo: (+7.1%); and Noro: (-2.6%).



The main percentage changes in index by CPI town and expenditure group from the previous month include:

Honiara: (+0.1%)

The most significant changes in movements include:

- Food and Non-Alcoholic Beverages: (+1.4%)
- Alcoholic beverages, tobacco and narcotics: (-7.1%)
- Housing, water, electricity, gas and other fuels: (-1.0%)
- Furnishings, household equipment & routine household maintenance: (+0.6%)
- Health: (-1.1%)
- Transport: (+5.1%)
- Miscellaneous goods & services: (-0.1%)

Auki: (+1.5%)

The main contributors to the movements were:

- Food and Non-Alcoholic Beverages: (+3.5%)
- Alcoholic beverages, tobacco and narcotics: (-0.1%)
- Housing, water, electricity, gas and other fuels: (-0.2%)
- Furnishings, household equipment and routine household maintenance: (+1.9%)
- Restaurants & hotels: (+6.1%)

Gizo: (+1.9%)

The main drivers to this movements were:

- Food and Non-Alcoholic Beverages: (+5.4%)
- Alcoholic beverages, tobacco and narcotics: (-1.0%)
- Clothing & Footwear: (-0.5%)
- Housing, water, electricity, gas and other fuels: (+0.5%)
- Furnishings, household equipment and routine household maintenance: (+0.1%)

- Transport: (-2.5%)
- Miscellaneous goods & services: (+1.1%)

Noro: (0.7%)

The main contributors to the movements were:

- Food and Non-Alcoholic Beverages: (+4.7%)
- Alcoholic beverages, tobacco and narcotics: (-0.1%)
- Housing, water, electricity, gas and other fuels: (-0.3%)
- Furnishings, household equipment and routine household maintenance: (-0.2%)
- Restaurants & Hotels: (+7.7%)
- Miscellaneous goods & services: (-0.4%)

NOTE: Selected tables are released with accompanying extended tables in excel file. Related information can be provided upon request. **In reproducing any information related to this release, the source must be acknowledged.**

Table 1.0: Solomon Islands Consumer Price Index by Group (2017=100.0), Weighted Average 4 Towns

Year/ Month	Food & Non-Alcoholic Beverages	Alcoholic beverages, tobacco & narcotics	Clothing & footwear	Housing, water, electricity, gas & other fuels	Furnishings, household equipment & routine household maintenance	Health	Transport	Communication	Recreation & culture	Education	Restaurants & hotels	Miscellaneous goods & services	All Items
2020 March	104.8	170.6	99.8	109.8	96.8	108.4	102.9	100.0	101.0	128.4	103.4	99.2	112.7
April	105.4	170.7	99.9	108.9	97.1	108.4	99.7	100.0	101.0	128.4	103.4	99.5	112.2
May	105.5	168.1	99.9	106.9	96.6	108.5	97.0	100.0	100.9	128.4	103.4	99.7	111.1
June	104.5	139.9	99.9	107.2	96.5	108.5	95.7	100.0	100.9	128.4	103.4	99.9	107.2
July	104.0	130.2	100.0	105.8	96.9	108.5	96.6	100.0	100.9	128.4	103.4	99.9	105.8
August	102.5	128.4	99.9	107.2	96.9	108.5	95.7	100.0	100.9	128.4	103.4	99.9	105.1
September	102.2	132.5	100.0	106.8	97.0	108.5	95.4	100.0	101.0	128.4	103.4	100.0	105.4
October	101.6	129.7	99.9	107.7	97.0	108.5	96.5	100.0	101.0	128.4	103.4	100.0	105.2
November	98.7	140.6	99.9	107.3	96.6	108.5	96.1	100.0	101.0	128.4	103.4	100.0	105.4
December	97.7	133.1	99.9	108.0	96.6	108.5	96.1	100.0	101.0	128.4	103.4	100.0	104.2
2021 January	96.7	152.4	100.8	110.3	93.5	108.4	97.6	100.0	101.7	124.3	103.4	100.0	106.7
February	98.2	179.1	102.7	110.1	92.7	106.1	98.7	100.0	100.8	124.3	103.4	99.0	110.6
March	101.2	185.4	102.7	111.3	92.9	106.1	97.6	100.0	100.8	124.3	103.4	99.0	112.4
April	100.2	162.0	101.7	112.4	93.0	106.1	100.1	100.0	100.8	124.3	103.4	99.0	109.8
May	99.9	160.1	101.9	110.2	93.3	106.1	99.9	100.0	100.8	124.5	103.4	108.4	109.2
June	100.1	137.6	101.9	109.7	93.2	106.5	100.2	100.0	102.5	124.5	103.4	108.6	106.6
July	100.0	131.5	101.3	110.6	94.3	106.5	100.9	100.0	102.2	124.5	103.4	108.6	106.1
August	99.4	133.4	100.4	111.8	95.3	106.5	102.3	100.0	100.9	124.5	103.4	108.4	106.6
September	99.2	137.2	100.3	113.1	95.2	106.5	102.8	100.0	100.9	124.5	103.4	108.5	107.3
October	100.4	134.0	100.3	113.9	95.0	108.9	103.1	100.0	100.9	124.5	103.4	108.4	107.5
November	100.2	133.7	100.3	112.9	95.3	108.9	104.0	100.0	100.9	124.5	103.4	108.4	107.4
December	100.9	132.5	100.3	114.6	95.5	108.9	104.3	100.0	100.9	124.5	103.4	108.4	107.8
2022 January	101.4	137.5	100.3	117.4	95.4	108.9	102.7	100.0	100.9	124.5	103.4	108.4	108.8
February	102.0	137.6	100.3	117.3	95.6	108.9	104.2	100.0	100.9	128.9	103.4	108.5	109.36
March	103.7	126.7	100.3	116.9	96.2	107.8	108.9	100.0	100.9	128.9	103.4	108.6	109.40
Percentage Change in the CPI by Group													
<i>(a) on the previous month</i>													
2020 March	0.9	-0.6	-0.1	0.6	-0.1	0.0	-1.5	0.0	0.0	0.0	0.0	0.0	0.0
April	0.6	0.1	0.1	-0.8	0.3	0.0	-3.1	0.0	0.0	0.0	0.0	0.3	-0.4
May	0.1	-1.5	0.0	-1.8	-0.5	0.1	-2.7	0.0	-0.1	0.0	0.0	0.2	-1.0
June	-0.9	-16.8	0.0	0.3	-0.1	0.0	-1.3	0.0	0.0	0.0	0.0	0.2	-3.5
July	-0.5	-6.9	0.1	-1.3	0.4	0.0	0.9	0.0	0.0	0.0	0.0	0.0	-1.3
August	-1.4	-1.4	-0.1	1.3	0.0	0.0	-0.9	0.0	0.0	0.0	0.0	0.0	-0.7
September	-0.3	3.2	0.1	-0.4	0.1	0.0	-0.3	0.0	0.1	0.0	0.0	0.1	0.3
October	-0.6	-2.1	-0.1	0.8	0.0	0.0	1.2	0.0	0.0	0.0	0.0	0.0	-0.2
November	-2.9	8.4	0.0	-0.4	-0.4	0.0	-0.4	0.0	0.0	0.0	0.0	0.0	0.2
December	-1.0	-5.3	0.0	0.7	0.0	0.0	0.0	0.0	0.0	0.0	0.0	0.0	-1.1
2021 January	-1.0	14.5	0.9	2.1	-3.2	-0.1	1.6	0.0	0.7	-3.2	0.0	0.0	2.4
February	1.6	17.5	1.9	-0.2	-0.9	-2.1	1.1	0.0	-0.9	0.0	0.0	-1.0	3.7
March	3.1	3.5	0.0	1.1	0.2	0.0	-1.1	0.0	0.0	0.0	0.0	0.0	1.6
April	-1.0	-12.6	-1.0	1.0	0.1	0.0	2.6	0.0	0.0	0.0	0.0	0.0	-2.3
May	-0.3	-1.2	0.2	-2.0	0.3	0.0	-0.2	0.0	0.0	0.2	0.0	9.5	-0.5
June	0.2	-14.1	0.0	-0.5	-0.1	0.4	0.3	0.0	1.7	0.0	0.0	0.2	-2.4
July	-0.1	-4.4	-0.6	0.8	1.2	0.0	0.7	0.0	-0.3	0.0	0.0	0.0	-0.5
August	-0.6	1.4	-0.9	1.1	1.1	0.0	1.4	0.0	-1.3	0.0	0.0	-0.2	0.5
September	-0.2	2.8	-0.1	1.2	-0.1	0.0	0.5	0.0	0.0	0.0	0.0	0.1	0.7
October	1.2	-2.3	0.0	0.7	-0.2	2.3	0.3	0.0	0.0	0.0	0.0	-0.1	0.2
November	-0.2	-0.2	0.0	-0.9	0.3	0.0	0.9	0.0	0.0	0.0	0.0	0.0	-0.1
December	0.7	-0.9	0.0	1.5	0.2	0.0	0.3	0.0	0.0	0.0	0.0	0.0	0.4
2022 January	0.5	3.8	0.0	2.4	-0.1	0.0	-1.5	0.0	0.0	0.0	0.0	0.0	0.9
February	0.6	0.1	0.0	-0.1	0.2	0.0	1.5	0.0	0.0	3.5	0.0	0.1	0.6
March	1.7	-7.9	0.0	-0.3	0.6	-1.0	4.5	0.0	0.0	0.0	0.0	0.1	0.03
<i>(b) on the same month a year ago</i>													
2020 March	2.0	48.1	-0.3	-0.4	0.2	9.1	1.2	0.0	0.5	-0.1	0.0	-0.3	7.2
April	4.9	47.5	-0.2	1.1	1.0	9.1	-3.4	0.0	0.5	-0.1	0.0	0.0	7.7
May	5.5	45.4	-0.3	-0.8	0.3	9.2	-6.7	0.0	0.4	-0.1	0.0	0.2	6.6
June	4.5	20.2	-0.3	0.4	0.1	9.2	-9.1	0.0	0.2	-0.1	0.0	0.3	2.9
July	1.9	11.5	-0.2	-1.7	0.5	9.2	-6.8	0.0	-0.1	0.0	0.0	0.2	0.8
August	1.1	8.6	-0.3	-0.5	0.5	9.2	-8.4	0.0	-0.1	0.0	0.0	0.3	0.0
September	0.7	8.3	-0.2	-1.0	0.5	9.2	-8.1	0.0	0.0	0.0	0.0	0.4	-0.1
October	-0.8	2.0	-0.3	-0.9	0.5	9.2	-7.1	0.0	0.0	0.0	0.0	0.4	-1.3
November	-4.0	9.5	-0.3	-1.6	0.1	9.2	-7.8	0.0	0.0	0.0	0.0	0.4	-1.5
December	-4.3	2.6	-0.3	-1.0	0.1	9.2	-7.9	0.0	0.0	0.0	0.0	0.4	-2.5
2021 January	-6.4	-11.0	0.9	0.8	-3.5	0.0	-6.6	0.0	0.7	-3.2	0.0	0.4	-5.1
February	-5.5	4.3	2.8	0.9	-4.3	-2.1	-5.6	0.0	-0.2	-3.2	0.0	-0.2	-1.9
March	-3.4	8.7	2.9	1.4	-4.0	-2.1	-5.2	0.0	-0.2	-3.2	0.0	-0.2	-0.3
April	-4.9	-5.1	1.8	3.2	-4.2	-5.1	0.4	0.0	-0.2	-3.2	0.0	-0.5	-2.1
May	-5.3	-4.8	2.0	3.1	-3.4	-2.2	3.0	0.0	-0.1	-3.0	0.0	8.7	-1.7
June	-4.2	-1.6	2.0	2.3	-3.4	-1.8	4.7	0.0	1.6	-3.0	0.0	8.7	-0.6
July	-3.8	1.0	1.3	4.5	-2.7	-1.8	4.5	0.0	1.3	-3.0	0.0	8.7	0.3
August/r	-3.0	3.9	0.5	4.3	-1.7	-1.8	6.9	0.0	0.0	-3.0	0.0	8.5	1.4
September	-2.9	3.5	0.3	5.9	-1.9	-1.8	7.8	0.0	-0.1	-3.0	0.0	8.5	1.8
October	-1.2	3.3	0.4	5.8	-2.1	0.4	6.8	0.0	-0.1	-3.0	0.0	8.4	2.2
November	1.5	-4.9	0.4	5.2	-1.3	0.4	8.2	0.0	-0.1	-3.0	0.0	8.4	1.9
December	3.3	-0.5	0.4	6.1	-1.1	0.4	8.5	0.0	-0.1	-3.0	0.0	8.4	3.5
2022 January	4.9	-9.8	-0.5	6.4	2.0	0.5	5.2	0.0	-0.8	0.2	0.0	8.4	2.0
February	3.9	-23.2	-2.3	6.5	3.1	2.6	5.6	0.0	0.1	3.7	0.0	9.6	-1.1
March	2.5	-31.7	-2.3	5.0	3.6	1.6	11.6	0.0	0.1	3.7	0.0	9.7	-2.7

Table 1.1: Solomon Islands Consumer Price Index by Group (2017=100.0), Weighted Average 4 Towns

Year/ Month	Food & Non-Alcoholic Beverages	Alcoholic beverages, tobacco & narcotics	Clothing & footwear	Housing, water, electricity, gas & other fuels	Furnishings, household equipment & routine household maintenance	Health	Transport	Communication	Recreation & culture	Education	Restaurants & hotels	Miscellaneous goods & services	All Items
Percentage Change in the CPI by Group													
<i>(c) 3 months moving average on same period a year ago</i>													
2020 March	2.3	48.1	-0.2	1.3	0.1	9.1	2.0	0.0	0.5	-0.1	0.0	0.1	7.8
April	2.9	48.4	-0.2	1.5	0.5	9.1	0.5	0.0	0.5	-0.1	0.0	-0.1	7.8
May	4.1	47.0	-0.3	0.0	0.5	9.1	-3.0	0.0	0.5	-0.1	0.0	0.0	7.2
June	5.0	37.7	-0.3	0.2	0.5	9.1	-6.4	0.0	0.4	-0.1	0.0	0.2	5.7
July	3.9	25.6	-0.3	-0.7	0.3	9.2	-7.6	0.0	0.2	-0.1	0.0	0.2	3.4
August	2.5	13.4	-0.3	-0.6	0.4	9.2	-8.1	0.0	0.0	0.0	0.0	0.3	1.2
September	1.2	9.5	-0.2	-1.1	0.5	9.2	-7.8	0.0	-0.1	0.0	0.0	0.3	0.2
October	0.3	6.3	-0.3	-0.8	0.5	9.2	-7.9	0.0	0.0	0.0	0.0	0.4	-0.5
November	-1.4	6.6	-0.3	-1.2	0.4	9.2	-7.7	0.0	0.0	0.0	0.0	0.4	-1.0
December	-3.0	4.7	-0.3	-1.2	0.2	9.2	-7.6	0.0	0.0	0.0	0.0	0.4	-1.8
2021 January	-4.9	-0.7	0.1	-0.6	-1.1	5.9	-7.4	0.0	0.2	-0.9	0.0	0.4	-3.1
February	-5.4	-1.7	1.1	0.2	-2.6	2.2	-6.7	0.0	0.2	-1.9	0.0	0.2	-3.2
March	-5.1	0.7	2.2	1.0	-4.0	-1.4	-5.8	0.0	0.1	-3.2	0.0	0.0	-2.4
April	-4.6	2.6	2.5	1.8	-4.2	-2.1	-3.5	0.0	-0.2	-3.2	0.0	-0.3	-1.4
May	-4.6	-0.4	2.2	2.5	-3.9	-2.2	-0.7	0.0	-0.2	-3.1	0.0	2.7	-1.4
June	-4.8	-4.0	1.9	2.9	-3.7	-2.1	2.7	0.0	0.4	-3.1	0.0	6.5	-1.5
July	-4.5	-2.1	1.8	3.3	-3.2	-2.0	4.0	0.0	0.9	-3.0	0.0	8.7	-0.7
August	-3.7	1.0	1.3	3.7	-2.6	-1.8	5.3	0.0	1.0	-3.0	0.0	8.6	0.4
September	-3.3	2.8	0.7	4.9	-2.1	-1.8	6.4	0.0	0.4	-3.0	0.0	8.6	1.2
October	-2.4	3.6	0.4	5.3	-1.9	-1.1	7.2	0.0	-0.1	-3.0	0.0	8.5	1.8
November	-0.9	0.5	0.4	5.6	-1.8	-0.4	7.6	0.0	-0.1	-3.0	0.0	8.4	2.0
December	1.2	-0.8	0.4	5.7	-1.5	0.4	7.9	0.0	-0.1	-3.0	0.0	8.4	2.5
2022 January/r	3.2	-5.3	0.1	5.9	-0.1	0.4	7.3	0.0	-0.3	-2.0	0.0	8.4	2.4
February	4.0	-12.3	-0.8	6.4	1.3	1.1	6.4	0.0	-0.3	0.2	0.0	8.7	1.4
March	3.8	-22.3	-1.8	6.0	2.9	1.5	7.5	0.0	-0.2	2.5	0.0	9.2	-0.6
Consumer Price Index - Annual (2017 =100.0)													
2010	90.1	49.1	82.3	57.2	93.6	56.5	90.3	119.7	81.1	85.5	69.7	99.5	79.0
2011	94.0	56.4	83.3	68.5	98.0	55.9	98.0	84.2	83.0	89.1	80.5	103.2	84.8
2012	97.9	58.7	83.9	79.8	102.3	71.9	98.0	78.4	87.5	89.6	89.2	108.6	89.8
2013	100.3	64.3	92.1	92.7	100.8	78.0	100.0	78.4	87.5	83.9	95.1	111.3	94.6
2014	103.5	80.9	95.9	101.0	101.8	84.9	101.2	78.4	87.5	88.1	96.1	114.9	99.6
2015	100.4	82.3	104.6	100.7	103.2	93.2	97.3	100.0	96.1	94.2	96.1	116.9	99.0
2016	100.9	91.9	103.9	99.2	102.6	100.0	97.3	100.0	99.6	94.2	96.1	110.7	99.5
2017	100.0	100.0	100.0	100.0	100.0	100.0	100.0	100.0	100.0	100.0	100.0	100.0	100.0
2018	101.9	112.1	100.1	102.2	98.6	100.0	104.3	100.0	100.0	122.7	104.6	99.0	103.5
2019	101.5	119.7	100.2	108.0	96.5	99.4	103.6	100.0	100.8	128.5	103.4	99.5	105.2
2020	102.8	148.9	99.9	107.8	96.8	108.5	98.4	100.0	101.0	128.4	103.4	99.7	108.3
2021	99.7	148.2	101.2	111.7	94.1	107.1	101.0	100.0	101.2	124.4	103.4	105.4	108.2
<i>(d) Annual Percentage Change</i>													
2010	-2.9	11.8	8.7	-0.9	3.8	1.1	7.2	-11.0	1.0	11.9	7.9	5.5	0.9
2011	4.4	14.8	1.2	19.7	4.7	-1.1	8.5	-29.6	2.4	4.3	15.4	3.7	7.4
2012	4.1	4.0	0.7	16.5	4.4	28.5	0.0	-6.9	5.4	0.5	10.8	5.2	5.9
2013	2.4	9.5	9.8	16.1	-1.4	8.5	2.0	0.0	0.0	-6.3	6.6	2.5	5.3
2014	3.2	25.8	4.1	9.0	1.0	8.8	1.3	0.0	0.0	5.0	1.1	3.3	5.3
2015	-3.0	1.8	9.1	-0.3	1.4	9.8	-3.9	27.5	9.8	7.0	0.0	1.7	-0.6
2016	0.5	11.6	-0.7	-1.5	-0.6	7.3	0.0	0.0	3.6	0.0	0.0	-5.3	0.5
2017	-0.9	8.9	-3.7	0.8	-2.6	0.0	2.8	0.0	0.4	6.1	4.0	-9.7	0.5
2018	1.9	12.1	0.1	2.2	-1.4	0.0	4.3	0.0	0.0	22.7	4.7	-1.0	3.5
2019	-0.4	6.8	0.0	5.7	-2.1	-0.6	-0.7	0.0	0.8	4.7	-1.2	0.5	1.6
2020	1.3	24.3	-0.2	-0.2	0.3	9.1	-5.0	0.0	0.2	0.0	0.0	0.2	3.0
2021	-3.1	-0.4	1.3	3.6	-2.8	-1.2	2.6	0.0	0.2	-3.1	0.0	5.7	-0.1

**Table 2.0: Solomon Islands Consumer Price Index of Impored Items by Group
(2017=100.0), Weighted Average 4 Towns**

Year/ Month	Food & Non-Alcoholic Beverages	Alcoholic beverages, tobacco narcotics	Clothing & footwear	Housing, water, electricity, gas & other fuels	Furnishings, household equipment & routine household maintenance	Health	Transport	Recreation & culture	Miscellaneous goods & services	All Items
2020 March	101.8	100.0	100.3	99.4	94.9	98.0	101.6	101.1	99.1	100.2
April	101.3	100.0	100.4	97.1	95.3	98.0	93.7	101.1	99.4	98.2
May	101.7	100.0	100.4	93.3	94.6	98.2	86.7	101.1	99.7	96.7
June	100.9	100.0	100.4	94.0	94.4	98.2	83.5	101.0	99.9	95.7
July	100.9	100.0	100.5	94.6	94.9	98.2	85.7	101.0	99.9	96.2
August	99.9	100.0	100.4	94.8	94.9	98.2	83.5	101.1	99.9	95.3
September	99.6	100.0	100.5	94.8	94.9	98.2	82.6	101.1	100.0	95.0
October	99.4	100.0	100.4	94.7	94.9	98.2	85.5	101.1	100.1	95.5
November	94.4	100.0	100.4	94.4	94.3	98.2	84.5	101.1	100.1	92.6
December	94.4	100.0	100.4	94.9	94.3	98.2	84.5	101.1	100.1	92.7
2021 January	94.2	103.4	100.4	97.9	90.4	98.0	88.3	101.8	100.0	93.3
February	93.9	104.3	102.6	98.1	89.4	98.0	90.9	100.7	98.9	93.7
March	93.9	104.3	102.6	100.0	89.6	98.0	88.2	100.8	98.9	93.3
April	93.7	104.3	101.5	100.3	89.7	98.0	94.5	100.8	98.8	94.5
May	93.3	89.8	101.7	100.3	90.2	98.0	94.0	100.8	98.0	94.6
June	93.6	89.8	101.5	101.2	90.2	99.4	94.9	102.7	109.4	95.0
July	93.3	88.3	100.9	104.4	89.0	99.4	96.9	102.4	109.4	95.3
August	92.5	88.3	99.9	104.7	90.4	99.4	99.1	100.9	109.3	95.4
September	92.9	87.6	99.8	104.5	90.2	99.4	100.2	100.9	109.3	95.8
October	93.7	87.6	99.9	107.7	90.1	99.4	101.0	100.9	109.2	96.5
November	94.0	87.6	99.8	110.4	90.5	99.4	104.4	100.9	109.2	97.6
December	94.0	87.6	99.8	111.0	90.8	99.4	105.1	100.9	109.2	97.8
2022 January/r	94.6	87.6	99.8	111.9	90.6	99.4	101.2	100.9	109.2	97.3
February	95.1	87.0	99.8	112.3	91.0	99.4	104.7	100.9	109.3	98.4
March	96.0	87.0	99.8	113.8	91.4	95.8	116.6	100.9	109.5	101.4
Percentage Change in the CPI by Group										
(a) on the previous month										
2020 March	0.2	0.0	-0.1	-0.8	-0.1	0.0	-4.1	0.0	0.0	-0.8
April	-0.5	0.0	0.1	-2.3	0.4	0.0	-7.8	0.0	0.3	-2.0
May	0.4	0.0	0.0	-3.9	-0.7	0.2	-7.5	0.0	0.3	-1.5
June	-0.8	0.0	0.0	0.8	-0.2	0.0	-3.7	-0.1	0.2	-1.0
July	0.0	0.0	0.1	0.6	0.5	0.0	2.6	0.0	0.0	0.5
August	-1.0	0.0	-0.1	0.2	0.0	0.0	-2.6	0.1	0.0	-0.9
September	-0.3	0.0	0.1	0.0	0.0	0.0	-1.1	0.0	0.1	-0.3
October	-0.2	0.0	-0.1	-0.1	0.0	0.0	3.5	0.0	0.1	0.5
November	-5.0	0.0	0.0	-0.3	-0.6	0.0	-1.2	0.0	0.0	-3.0
December	0.0	0.0	0.0	0.5	0.0	0.0	0.0	0.0	0.0	0.1
2021 January	1.6	9.5	0.4	-2.5	-4.7	3.9	-10.1	0.7	-0.1	0.6
February	-0.3	0.9	2.2	0.2	-1.1	0.0	2.9	-1.1	-1.1	0.4
March	0.0	0.0	0.0	1.9	0.2	0.0	-3.0	0.1	0.0	-0.4
April	-0.2	0.0	-1.1	0.3	0.1	0.0	7.1	0.0	-0.1	1.3
May	-0.4	-13.9	0.2	0.0	0.6	0.0	-0.5	0.0	10.5	0.1
June	0.3	0.0	-0.2	0.9	0.0	1.4	1.0	1.9	0.2	0.4
July	-0.3	-1.7	-0.6	3.2	-1.3	0.0	2.1	-0.3	0.0	0.3
August	-0.9	0.0	-1.0	0.3	1.6	0.0	2.3	-1.5	-0.1	0.1
September	0.4	-0.8	-0.1	-0.2	-0.2	0.0	1.1	0.0	0.0	0.4
October	0.9	0.0	0.1	3.1	-0.1	0.0	0.8	0.0	-0.1	0.7
November	0.3	0.0	-0.1	2.5	0.4	0.0	3.4	0.0	0.0	1.1
December	0.0	0.0	0.0	0.5	0.3	0.0	0.7	0.0	0.0	0.2
2022 January/r	0.6	0.0	0.0	0.8	-0.2	0.0	-3.7	0.0	0.0	-0.5
February	0.5	-0.7	0.0	0.4	0.4	0.0	3.5	0.0	0.1	1.1
March	0.9	0.0	0.0	1.3	0.4	-3.6	11.4	0.0	0.2	3.0
(b) on the same month a year ago										
2020 March	2.7	0.0	-0.1	3.3	-0.4	0.0	2.3	0.6	-0.3	2.0
April	2.6	0.0	0.0	-0.3	0.3	0.0	-8.9	0.5	0.0	-0.6
May	3.4	0.0	0.0	-4.7	-0.5	0.2	-17.3	0.5	0.3	-2.4
June	2.5	0.0	0.0	-4.1	-0.7	0.2	-22.6	0.3	0.3	-4.0
July	2.4	0.0	0.1	-3.9	0.0	0.2	-17.3	-0.1	0.3	-2.7
August	1.6	0.0	0.0	-3.4	0.0	0.2	-20.9	0.0	0.3	-3.9
September	1.2	0.0	0.1	-2.7	-0.2	0.2	-20.5	0.0	0.4	-3.9
October	-1.8	0.0	0.0	-2.9	-0.2	0.2	-18.0	0.0	0.5	-4.9
November	-7.0	0.0	0.0	-3.9	-0.8	0.2	-19.5	0.0	0.5	-8.0
December	-7.2	0.0	0.1	-3.5	-0.8	0.2	-19.8	0.0	0.6	-8.1
2021 January	-7.2	3.4	0.0	-0.5	-4.9	0.0	-16.5	0.7	0.5	-7.5
February	-7.6	4.3	2.2	-2.1	-5.9	0.0	-14.2	-0.4	-0.2	-7.2
March	-7.8	4.3	2.3	0.6	-5.6	0.0	-13.2	-0.3	-0.2	-6.9
April	-7.5	4.3	1.1	3.3	-5.9	0.0	0.9	-0.3	-0.6	-3.8
May	-8.3	-10.2	1.3	7.5	-4.7	-0.2	8.4	-0.3	9.5	-2.2
June	-7.2	-10.2	1.1	7.7	-4.4	1.2	13.7	1.7	9.5	-0.7
July	-7.5	-11.7	0.4	10.4	-6.2	1.2	13.1	1.4	9.5	-0.9
August	-7.4	-11.7	-0.5	10.4	-4.7	-7.3	18.7	-0.2	9.4	0.1
September	-6.7	-12.4	-0.7	10.2	-5.0	1.2	21.3	-0.2	9.3	0.8
October	-5.7	-12.4	-0.5	13.7	-5.1	1.2	18.1	-0.2	9.1	1.0
November	-0.4	-12.4	-0.6	16.9	-4.0	1.2	23.6	-0.2	9.1	5.4
December	-0.4	-12.4	-0.6	17.0	-3.7	1.2	24.4	-0.2	9.1	5.5
2022 January/r	0.4	-15.3	-0.6	14.3	0.2	1.4	-14.6	-0.9	9.2	4.3
February	1.3	-16.6	-2.7	14.5	1.8	1.4	15.2	0.2	10.5	5.0
March	2.2	-16.6	-2.7	13.8	2.0	-2.2	32.2	0.1	10.7	8.7

Table 2.1: Solomon Islands Consumer Price Index of Imported Items by Group (2017=100.0), Weighted Average 4 Towns

Year/ Month	Food & Non-Alcoholic Beverages	Alcoholic beverages, tobacco narcotics	Clothing & footwear	Housing, water, electricity, gas & other fuels	Furnishings, household equipment & routine household maintenance	Health	Transport	Recreation & culture	Miscellaneous goods & services	All Items
Percentage Change in the CPI by Group										
<i>(c) 3 months moving average on same period a year ago</i>										
2020 March	2.4	0.0	0.1	2.2	-0.3	0.0	4.1	0.6	0.1	2.2
April	2.6	0.0	0.0	2.6	-0.2	0.0	0.7	0.6	-0.1	1.6
May	2.9	0.0	0.0	-0.6	-0.2	0.1	-8.2	0.5	0.0	-0.3
June	2.8	0.0	-0.2	-3.0	-0.3	0.1	-16.4	0.4	0.2	-2.4
July	2.8	0.0	0.0	-4.2	-0.4	0.2	-19.1	0.2	0.3	-3.1
August	2.2	0.0	0.0	-3.8	-0.2	0.2	-20.3	0.1	0.3	-3.6
September	1.8	0.0	0.1	-3.3	-0.1	0.2	-19.6	0.0	0.3	-3.5
October	0.3	0.0	0.0	-3.0	-0.1	0.2	-19.8	0.0	0.4	-4.3
November	-2.6	0.0	0.0	-3.1	-0.4	0.2	-19.3	0.0	0.5	-5.6
December	-5.3	0.0	0.0	-3.4	-0.6	0.2	-19.1	0.0	0.5	-7.0
2021 January	-7.1	1.1	0.0	-2.6	-2.2	0.1	-18.6	0.2	0.5	-7.9
February	-7.3	2.6	0.8	-2.0	-3.9	0.1	-16.8	0.1	0.3	-7.6
March	-7.5	4.0	1.5	-0.7	-5.5	0.0	-14.7	0.0	0.0	-7.2
April	-7.6	4.3	1.9	0.6	-5.8	0.0	-9.2	-0.3	-0.3	-6.0
May	-7.8	-0.5	1.6	3.7	-5.4	-0.1	-1.9	-0.3	2.9	-4.3
June	-7.7	-5.4	1.2	6.1	-5.0	0.3	7.4	0.4	6.2	-2.2
July	-7.7	-10.7	0.9	8.5	-5.1	0.7	11.7	0.9	9.5	-1.3
August	-7.4	-11.2	0.3	9.5	-5.1	-1.6	15.1	1.0	9.5	-0.5
September	-7.2	-11.9	-0.3	10.3	-5.3	1.2	17.6	0.3	9.4	0.0
October	-6.6	-12.2	-0.6	11.5	-4.9	1.2	19.4	-0.2	9.3	0.7
November	-4.4	-12.4	-0.6	13.6	-4.7	1.2	21.0	-0.2	9.2	2.4
December	-2.3	-12.4	-0.6	15.9	-4.3	1.2	22.0	-0.2	9.1	4.0
2022 January/r	-0.2	-13.4	-0.6	16.1	-2.6	1.3	20.7	-0.4	9.1	5.0
February	0.4	-14.8	-1.3	15.2	-0.6	1.3	17.9	-0.3	9.6	4.9
March	1.3	-16.2	-2.0	14.2	1.3	0.2	20.6	-0.2	10.1	6.0
Consumer Price Index - Annual (2017 =100.0)										
2010	98.4	95.3	88.3	87.2	93.2	81.6	103.3	80.0	99.5	95.5
2011	102.5	97.7	87.8	103.0	96.4	79.8	122.6	82.0	103.8	102.2
2012	105.3	98.8	88.7	106.3	103.0	82.6	119.8	86.8	110.1	105.1
2013	106.2	99.8	100.2	107.6	101.7	101.4	118.5	86.8	113.1	106.3
2014	102.3	99.8	100.3	106.8	102.6	100.6	118.2	86.8	117.3	104.8
2015	105.0	99.9	100.5	99.3	104.1	100.0	104.2	95.9	119.6	104.4
2016	104.4	100.0	99.3	99.4	103.6	100.0	97.3	99.5	112.4	102.9
2017	100.0	100.0	100.0	100.0	100.0	100.0	100.0	100.0	100.0	100.0
2018	99.3	100.0	100.3	104.1	97.8	100.0	107.1	100.0	98.8	100.7
2019 /r	99.4	100.0	100.4	97.7	95.1	98.0	103.7	100.8	99.4	99.4
2020	99.8	100.0	100.4	95.9	94.8	98.1	90.3	101.1	99.7	96.7
2021	93.6	93.6	100.9	103.4	90.0	98.8	96.5	101.2	105.9	95.2
(d) Annual Percentage Change										
2010	-6.0	5.2	1.6	8.4	2.2	2.5	12.6	1.0	6.5	0.1
2011	4.2	2.5	-0.6	18.0	3.4	-2.3	18.7	2.5	4.3	7.0
2012	2.7	1.2	1.0	3.2	6.9	3.6	-2.3	5.8	6.0	2.8
2013	0.9	1.0	13.0	1.3	-1.3	22.8	-1.1	0.0	2.7	1.2
2014	-3.7	0.0	0.0	-0.7	0.9	-0.8	-0.2	0.0	3.8	-1.4
2015	2.6	0.1	0.2	-7.0	1.5	-0.6	-11.9	10.5	2.0	-0.4
2016	-0.5	0.1	-1.2	0.1	-0.5	0.0	-6.7	3.8	-6.0	-1.4
2017	-4.3	0.0	0.7	0.6	-3.5	0.0	2.8	0.5	-11.0	-2.8
2018	-0.6	0.0	0.3	4.1	-2.2	0.0	7.1	0.0	-1.2	0.7
2019 /r	0.1	0.0	0.1	-6.1	-2.7	-2.0	-3.2	0.8	0.7	-1.4
2020	0.4	0.0	0.0	-1.9	-0.3	0.1	-12.9	0.2	0.3	-2.7
2021	-6.2	-6.4	0.5	7.8	-5.0	0.7	6.8	0.1	6.2	-1.5

**Table 3.0: Solomon Islands Consumer Price Index of Other Items by Group
(2017=100.0), Weighted Average 4 Towns**

Year/ Month	Food & Non-Alcoholic Beverages	Alcoholic beverages, tobacco narcotics	Clothing & footwear	Housing, water, electricity, gas & other fuels	Furnishings, household equipment & routine household maintenance	Health	Transport	Communication	Recreation & culture	Education	Restaurants & hotels	Miscellaneous goods & services	All Items
2020 March	107.0	171.4	96.7	111.2	101.5	113.1	104.3	100.0	99.9	128.4	103.4	100.0	118.9
April	108.4	171.6	96.7	110.5	101.8	113.1	104.3	100.0	99.9	128.4	103.4	100.0	119.1
May	108.3	168.9	96.7	108.9	101.7	113.1	104.3	100.0	99.9	128.4	103.4	100.0	118.3
June	107.1	140.5	96.7	109.0	101.8	113.1	104.3	100.0	99.9	128.4	103.4	100.0	112.9
July	106.2	130.7	96.7	107.2	101.7	113.1	104.3	100.0	99.9	128.4	103.4	100.0	110.5
August	104.3	128.9	96.7	109.0	102.0	113.1	104.3	100.0	99.9	128.4	103.4	100.0	110.1
September	104.0	133.0	96.7	108.4	102.0	113.1	104.3	100.0	100.2	128.4	103.4	100.0	110.6
October	103.0	130.2	96.7	109.5	102.1	113.1	104.3	100.0	100.2	128.4	103.4	100.0	110.1
November	102.0	141.1	96.7	109.1	102.0	113.1	104.3	100.0	100.6	128.4	103.4	100.0	111.7
December	100.1	133.6	96.7	109.8	102.0	113.1	104.3	100.0	100.9	128.4	103.4	100.0	110.0
2021 January	98.3	153.1	104.1	112.0	100.8	113.1	104.3	100.0	100.9	124.3	103.4	100.0	113.3
February	101.5	180.0	104.1	111.7	100.8	109.6	104.3	100.0	100.9	124.3	103.4	100.0	118.9
March	107.4	186.4	104.1	112.8	100.8	109.6	104.3	100.0	100.9	124.3	103.4	100.0	121.9
April	105.6	162.7	104.1	114.1	100.9	109.6	104.3	100.0	100.9	124.3	103.4	100.0	117.5
May	105.4	160.9	104.1	111.5	100.7	109.6	104.3	100.0	100.9	124.5	102.0	104.5	116.5
June	105.5	138.2	104.9	110.9	100.7	109.6	104.2	100.0	100.9	124.5	101.7	104.5	112.3
July	105.7	132.0	104.9	111.4	107.0	109.6	104.1	100.0	100.7	124.5	102.2	104.5	111.5
August	105.2	134.0	104.2	112.7	107.1	109.6	105.0	100.0	100.4	124.5	102.7	104.5	112.1
September	104.4	137.8	104.2	114.3	107.1	109.6	105.0	100.0	100.4	124.5	102.7	104.5	113.0
October	106.0	134.6	104.2	114.7	106.7	113.1	105.0	100.0	100.4	124.5	102.7	104.5	112.9
November	105.4	134.2	104.2	113.1	106.8	113.1	104.4	100.0	100.8	124.5	104.2	104.5	112.3
December	106.7	133.1	104.2	115.0	106.8	113.1	104.4	100.0	100.8	124.5	104.2	104.5	112.8
2022 January/r	107.1	138.1	104.2	118.1	106.9	113.1	104.4	100.0	100.8	124.5	104.2	104.5	114.5
February	107.8	138.2	104.2	117.9	106.8	113.1	104.4	100.0	100.8	128.9	104.2	104.5	114.8
March	110.2	127.3	104.2	117.2	107.7	113.1	104.5	100.0	100.8	128.9	104.2	104.1	113.4
Percentage Change in the CPI by Group													
<i>(a) on the previous month</i>													
2020 March	1.6	-0.6	0.0	0.8	-0.1	0.0	0.0	0.0	0.0	0.0	0.0	0.0	0.4
April	1.3	0.1	0.0	-0.6	0.3	0.0	0.0	0.0	0.0	0.0	0.0	0.0	0.2
May	-0.1	-1.6	0.0	-1.4	-0.1	0.0	0.0	0.0	0.0	0.0	0.0	0.0	-0.7
June	-1.1	-16.8	0.0	0.2	0.1	0.0	0.0	0.0	0.0	0.0	0.0	0.0	-4.6
July	-0.8	-7.0	0.0	-1.7	-0.1	0.0	0.0	0.0	0.0	0.0	0.0	0.0	-2.1
August	-1.8	-1.4	0.0	1.5	0.3	0.0	0.0	0.0	0.0	0.0	0.0	0.0	-0.4
September	-0.3	3.2	0.0	-0.6	0.0	0.0	0.0	0.0	0.3	0.0	0.0	0.0	0.5
October	-1.0	-2.1	0.0	1.0	0.1	0.0	0.0	0.0	0.0	0.0	0.0	0.0	-0.5
November	-1.0	8.4	0.0	-0.4	-0.1	0.0	0.0	0.0	0.4	0.0	0.0	0.0	1.5
December	-1.9	-5.3	0.0	0.6	0.0	0.0	0.0	0.0	0.3	0.0	0.0	0.0	-1.5
2021 January	-1.8	14.6	7.7	2.0	-1.2	0.0	0.0	0.0	0.0	-3.2	0.0	0.0	3.0
February	3.3	17.6	0.0	-0.3	0.0	-3.1	0.0	0.0	0.0	0.0	0.0	0.0	4.9
March	5.8	3.6	0.0	1.0	0.0	0.0	0.0	0.0	0.0	0.0	0.0	0.0	2.5
April	-1.7	-12.7	0.0	1.2	0.1	0.0	0.0	0.0	0.0	0.0	0.0	0.0	-3.6
May	-0.2	-1.1	0.0	-2.3	-0.2	0.0	0.0	0.0	0.0	0.2	-1.4	4.5	-0.9
June	0.1	-14.1	0.8	-0.5	0.0	0.0	-0.1	0.0	0.0	0.0	-0.3	0.0	-3.6
July	0.2	-4.5	0.0	0.5	6.3	0.0	-0.1	0.0	-0.2	0.0	0.5	0.0	-0.7
August	-0.5	1.5	-0.7	1.2	0.1	0.0	0.9	0.0	-0.3	0.0	0.5	0.0	0.5
September	-0.8	2.8	0.0	1.4	0.0	0.0	0.0	0.0	0.0	0.0	0.0	0.0	0.8
October	1.5	-2.3	0.0	0.3	-0.4	3.2	0.0	0.0	0.0	0.0	0.0	0.0	-0.1
November	-0.6	-0.3	0.0	-1.4	0.1	0.0	-0.6	0.0	0.4	0.0	1.5	0.0	-0.5
December	1.2	-0.8	0.0	1.7	0.0	0.0	0.0	0.0	0.0	0.0	0.0	0.0	0.4
2022 January/r	0.4	3.8	0.0	2.7	0.1	0.0	0.0	0.0	0.0	0.0	0.0	0.0	1.5
February	0.7	0.1	0.0	-0.2	-0.1	0.0	0.0	0.0	0.0	3.5	0.0	0.0	0.3
March	2.2	-7.9	0.0	-0.6	0.8	0.0	0.1	0.0	0.0	0.0	0.0	-0.4	-1.2
<i>(b) on the same month a year ago</i>													
2020 March	1.5	48.4	-2.2	-0.8	1.6	13.1	0.4	0.0	-0.2	-0.1	0.0	0.0	9.6
April	6.8	47.9	-2.2	1.3	2.7	13.1	0.2	0.0	-0.2	-0.1	0.0	0.0	11.4
May	7.4	45.7	-2.6	-0.3	2.3	13.1	0.2	0.0	-0.2	-0.1	0.0	0.0	10.8
June	6.4	20.4	-2.6	0.9	2.0	13.1	0.0	0.0	-0.2	-0.1	0.0	0.0	5.8
July	1.3	11.6	-2.6	-1.5	1.7	13.1	0.0	0.0	-0.3	0.0	0.0	0.0	2.3
August	0.7	8.7	-2.6	0.0	2.0	13.1	0.0	0.0	-0.4	0.0	0.0	0.0	1.9
September	0.3	8.4	-2.6	-0.9	2.0	13.1	0.0	0.0	0.3	0.0	0.0	0.0	1.7
October	0.2	2.1	-2.6	-0.6	2.2	13.1	0.0	0.0	0.3	0.0	0.0	0.0	0.5
November	-1.3	9.5	-2.6	-1.3	2.1	13.1	0.0	0.0	0.7	0.0	0.0	0.0	1.5
December	-1.6	2.6	-2.6	-0.6	2.1	13.1	0.0	0.0	1.0	0.0	0.0	0.0	0.1
2021 January	-5.7	-11.0	7.7	0.9	-0.5	0.0	0.0	0.0	1.0	-3.2	0.0	0.0	-4.1
February	-3.6	4.3	7.7	1.3	-0.8	-3.1	0.0	0.0	1.0	-3.2	0.0	0.0	0.4
March	0.4	8.8	7.7	1.4	-0.7	-3.1	0.0	0.0	1.0	-3.2	0.0	0.0	2.5
April	-2.6	-5.2	7.7	3.3	-0.9	-3.1	0.0	0.0	1.0	-3.2	0.0	0.0	-1.3
May	-2.7	-4.7	7.7	2.5	-1.0	-3.1	0.0	0.0	1.0	-3.0	-1.4	4.5	-1.5
June	-1.5	-1.6	8.5	1.7	-1.1	-3.1	-0.1	0.0	1.0	-3.0	-1.6	4.5	-0.5
July	-0.5	1.0	8.5	3.7	-5.2	-3.1	-0.2	0.0	0.8	-3.0	-1.2	4.5	0.9
August	0.9	4.0	7.8	3.4	5.0	-3.1	0.7	0.0	0.5	-3.0	-0.7	4.5	1.8
September	0.4	3.6	7.8	5.4	5.0	-3.1	0.7	0.0	0.2	-3.0	-0.7	4.5	2.2
October	2.9	3.4	7.8	4.7	4.5	0.0	0.7	0.0	0.2	-3.0	-0.7	4.5	2.5
November	3.3	-4.9	7.8	3.7	4.7	0.0	0.1	0.0	0.2	-3.0	0.8	4.5	0.5
December	6.6	-0.4	7.8	4.7	4.7	0.0	0.1	0.0	-0.1	-3.0	0.8	4.5	2.5
2022 January	9.0	-9.8	0.1	5.4	6.1	0.0	0.1	0.0	-0.1	0.2	0.8	4.5	1.1
February	6.2	-23.2	0.1	5.6	6.0	3.2	0.1	0.0	-0.1	3.7	0.8	4.5	-3.4
March	2.6	-31.7	0.1	3.9	6.8	3.2	0.2	0.0	-0.1	3.7	0.8	4.1	-7.0

**Table 3.1: Solomon Islands Consumer Price Index of Other Items by Group
(2017=100.0), Weighted Average 4 Towns**

Year/ Month	Food & Non-Alcoholic Beverages	Alcoholic beverages, tobacco narcotics	Clothing & footwear	Housing, water, electricity, gas & other fuels	Furnishings, household equipment & routine household maintenance	Health	Transport	Communication	Recreation & culture	Education	Restaurants & hotels	Miscellaneous goods & services	All Items
Percentage Change in the CPI by Group													
<i>(c) 3 months moving average on same period a year ago</i>													
2020 March	2.2	48.4	-2.1	1.2	1.0	13.1	0.6	0.0	-0.2	-0.1	0.0	0.0	10.3
April	3.2	48.7	-2.2	1.4	2.0	13.1	0.4	0.0	-0.2	-0.1	0.0	0.0	10.6
May	5.2	47.4	-2.4	0.1	2.2	13.1	0.3	0.0	-0.2	-0.1	0.0	0.0	10.6
June	6.9	38.0	-2.5	0.6	2.3	13.1	0.1	0.0	-0.2	-0.1	0.0	0.0	9.3
July	5.0	25.9	-2.6	-0.3	2.0	13.1	0.1	0.0	-0.2	-0.1	0.0	0.0	6.3
August	2.7	13.5	-2.6	-0.1	1.9	13.1	0.0	0.0	-0.3	0.0	0.0	0.0	3.3
September	0.8	9.5	-2.6	-0.7	1.9	13.1	0.0	0.0	-0.1	0.0	0.0	0.0	2.0
October	0.4	6.3	-2.6	-0.5	2.1	13.1	0.0	0.0	0.1	0.0	0.0	0.0	1.3
November	-0.3	6.6	-2.6	-0.9	2.1	13.1	0.0	0.0	0.4	0.0	0.0	0.0	1.2
December	-0.9	4.7	-2.6	-0.8	2.1	13.1	0.0	0.0	0.7	0.0	0.0	0.0	0.7
2021 January	-2.8	-0.8	0.7	-0.3	1.2	8.4	0.0	0.0	0.9	-1.1	0.0	0.0	-0.9
February	-3.6	-1.7	4.2	0.5	0.3	2.9	0.0	0.0	1.0	-2.1	0.0	0.0	-1.2
March	-2.9	0.7	7.7	1.2	-0.7	-2.1	0.0	0.0	1.0	-3.2	0.0	0.0	-0.4
April	-1.9	2.6	7.7	2.0	-0.8	-3.1	0.0	0.0	1.0	-3.2	0.0	0.0	0.5
May	-1.6	-0.4	7.7	2.4	-0.9	-3.1	0.0	0.0	1.0	-3.1	-0.5	1.5	-0.1
June	-2.3	-4.0	7.9	2.5	-1.0	-3.1	0.0	0.0	1.0	-3.1	-1.0	3.0	-1.1
July	-1.6	-2.0	8.2	2.6	1.0	-3.1	-0.1	0.0	0.9	-3.0	-1.4	4.5	-0.4
August	-0.4	1.0	8.2	3.0	3.0	-3.1	0.1	0.0	0.8	-3.0	-1.2	4.5	0.7
September	0.3	2.9	8.0	4.2	5.1	-3.1	0.4	0.0	0.5	-3.0	-0.8	4.5	1.6
October	1.4	3.6	7.8	4.5	4.8	-2.1	0.7	0.0	0.3	-3.0	-0.7	4.5	2.2
November	2.2	0.6	7.8	4.6	4.7	-1.0	0.5	0.0	0.2	-3.0	-0.2	4.5	1.7
December	4.3	-0.7	7.8	4.4	4.6	0.0	0.3	0.0	0.1	-3.0	0.3	4.5	1.9
2022 January/r	6.3	-5.2	5.1	4.6	5.1	0.0	0.1	0.0	0.0	-2.0	0.7	4.5	1.4
February	7.2	-12.3	2.5	5.2	5.5	1.0	0.1	0.0	-0.1	0.2	0.7	4.5	0.0
March	5.9	-22.3	0.1	4.9	6.3	2.0	0.1	0.0	-0.1	2.5	0.7	4.3	-3.2
Consumer Price Index - Annual (2017 =100.0)													
2010	84.6	47.1	73.7	51.6	95.0	44.4	83.7	119.7	100.0	85.5	69.7	99.1	70.7
2011	88.5	54.7	76.9	62.1	104.5	44.4	85.6	84.2	100.0	89.1	80.5	99.1	76.2
2012	93.1	57.0	76.9	74.9	99.2	66.7	87.0	78.4	100.0	89.6	89.2	99.1	82.2
2013	96.4	62.7	80.4	89.8	97.2	66.7	90.6	78.4	100.0	83.9	95.1	100.0	88.7
2014	104.3	80.0	89.6	99.9	98.6	77.3	92.6	78.4	100.0	88.1	96.1	100.0	96.9
2015	97.3	81.6	110.4	101.0	99.6	89.9	93.8	100.0	100.0	94.2	96.1	100.0	96.3
2016	98.6	91.5	110.4	99.2	98.8	100.0	97.3	100.0	100.0	94.2	96.1	100.0	97.8
2017	100.0	100.0	100.0	100.0	100.0	100.0	100.0	100.0	100.0	100.0	100.0	100.0	100.0
2018	103.7	112.5	99.8	101.9	100.6	100.0	102.8	100.0	100.0	122.7	104.6	100.0	104.8
2019	102.7	120.1	99.1	109.4	100.0	100.0	104.1	100.0	100.1	128.5	103.4	100.0	108.1
2020	105.0	149.5	96.7	109.5	101.8	113.1	104.3	100.0	100.1	128.4	103.4	100.0	114.1
2021	104.8	148.9	104.3	112.9	103.9	110.8	104.5	100.0	100.7	124.4	103.0	103.0	114.6
(d) Annual Percentage Change													
2010	-0.5	12.4	23.6	-3.5	10.7	0.0	4.1	-11.0	0.0	11.9	7.9	0.0	1.4
2011	4.5	15.9	4.2	20.3	10.0	0.0	2.2	-29.6	0.0	4.3	15.4	0.0	7.7
2012	5.2	4.2	0.0	20.6	-5.0	50.0	1.7	-6.9	0.0	0.5	10.8	0.0	8.0
2013	3.6	10.1	4.7	20.0	-2.0	0.0	4.1	0.0	0.0	-6.3	6.6	0.9	7.9
2014	8.1	27.6	11.3	11.2	1.4	15.9	2.2	0.0	0.0	5.0	1.1	0.0	9.3
2015	-6.7	1.9	23.3	1.1	1.0	16.3	1.3	27.5	0.0	7.0	0.0	0.0	-0.7
2016	1.3	12.2	0.0	-1.8	-0.9	11.2	3.7	0.0	0.0	0.0	0.0	0.0	1.6
2017	1.4	9.3	-9.5	0.8	1.2	0.0	2.8	0.0	0.0	6.1	4.0	0.0	2.2
2018	3.7	12.5	-0.2	1.9	0.6	0.0	2.8	0.0	0.0	22.7	4.7	0.0	4.8
2019	-0.9	6.8	-0.7	7.4	-0.7	0.0	1.3	0.0	0.1	4.7	-1.2	0.0	3.1
2020	2.2	24.5	-2.4	0.1	1.8	13.1	0.2	0.0	0.0	0.0	0.0	0.0	5.5
2021	-0.2	-0.4	7.8	3.1	2.0	-2.1	0.2	0.0	0.6	-3.1	-0.4	3.0	0.5

Table 4.0: Solomon Islands CPI and Measures of Underlying Inflation, Weighted Average 4 Towns

Year/ Month	Headline CPI	Measures of Underlying Inflation (Exclusion Based)			
		I. Excl. Volatile Items	II. Excl. Volatile Items & Price Control	III. Excl. Volatile, Price Control & Excise	IV. Excl. Volatile, Price Control, Excise & Other Selected Items
2020 March	112.7	102.1	102.3	103.1	100.7
April	112.2	101.9	102.1	102.8	100.5
May	111.1	101.6	101.7	102.4	100.6
June	107.2	101.6	101.7	102.3	100.3
July	105.8	101.3	101.4	101.9	100.5
August	105.1	101.5	101.6	102.1	100.2
September	105.4	101.3	101.5	101.9	100.1
October	105.2	101.5	101.6	102.1	100.0
November	105.4	100.5	100.6	100.8	98.2
December	104.2	100.6	100.7	100.9	98.1
2021 January	106.7	100.9	100.9	101.3	98.7
February	110.6	100.6	100.7	101.1	97.9
March	112.4	100.9	101.0	101.4	98.3
April	109.8	101.1	101.2	101.7	98.6
May	109.2	100.8	100.8	101.3	98.8
June	106.6	100.8	100.8	101.2	99.0
July	106.1	101.1	101.2	101.4	98.9
August	106.5	101.4	101.6	101.7	99.0
September	107.3	101.8	101.9	102.1	99.2
October	107.5	102.0	102.2	102.5	99.6
November	107.4	101.9	102.0	102.2	99.8
December	107.8	102.2	102.4	102.7	100.0
2022 January/r	108.8	102.9	103.2	103.6	100.2
February	109.4	103.2	103.5	103.9	100.5
March	109.4	103.9	104.3	104.8	101.7
Percentage change, on the same month a year ago					
2020 March	7.2	0.7	0.8	0.9	1.6
April	7.7	1.1	1.2	1.4	1.6
May	6.6	0.9	0.9	1.0	1.8
June	2.9	1.0	1.0	1.1	1.5
July	0.8	0.5	0.5	0.5	1.5
August	0.0	0.8	0.8	0.7	1.3
September	-0.1	0.4	0.5	0.3	1.2
October	-1.3	-0.2	-0.2	-0.5	0.0
November	-1.5	-1.3	-1.4	-1.9	-2.0
December	-2.5	-1.3	-1.4	-1.8	-2.4
2021 January	-5.1	-1.1	-1.3	-1.6	-2.1
February	-1.9	-1.3	-1.4	-1.7	-2.9
March	-0.3	-1.2	-1.3	-1.6	-2.4
April	-2.1	-0.8	-0.9	-1.1	-1.9
May	-1.7	-0.8	-0.9	-1.1	-1.8
June	-0.6	-0.8	-0.9	-1.1	-1.3
July	0.3	-0.2	-0.2	-0.6	-1.6
August	1.3	-0.1	0.0	-0.4	-1.2
September	1.8	0.5	0.4	0.2	-0.9
October	2.2	0.5	0.6	0.4	-0.4
November	1.9	1.4	1.4	1.4	1.6
December	3.5	1.6	1.7	1.8	1.9
2022 January/r	2.0	2.0	2.3	2.3	1.5
February	-1.1	2.6	2.8	2.8	2.7
March	-2.7	3.0	3.3	3.4	3.5
Percentage change, 3 months moving average on the same period a year ago					
2020 March	7.8	1.0	1.1	1.2	1.6
April	7.8	1.1	1.2	1.4	1.6
May	7.2	0.9	1.0	1.1	1.7
June	5.7	1.0	1.0	1.2	1.7
July	3.4	0.8	0.8	0.9	1.6
August	1.2	0.8	0.8	0.8	1.4
September	0.2	0.6	0.6	0.5	1.3
October	-0.5	0.3	0.4	0.2	0.8
November	-1.0	-0.4	-0.4	-0.7	-0.3
December	-1.8	-0.9	-1.0	-1.4	-1.5
2021 January	-3.1	-1.2	-1.3	-1.8	-2.2
February	-3.2	-1.2	-1.3	-1.7	-2.4
March	-2.4	-1.2	-1.3	-1.6	-2.4
April	-1.4	-1.1	-1.2	-1.5	-2.4
May	-1.4	-0.9	-1.0	-1.3	-2.0
June	-1.5	-0.8	-0.9	-1.1	-1.7
July	-0.7	-0.6	-0.7	-0.9	-1.6
August	0.4	-0.4	-0.4	-0.7	-1.4
September	1.2	0.1	0.1	-0.3	-1.2
October	1.8	0.3	0.3	0.1	-0.8
November	2.0	0.8	0.8	0.7	0.1
December	2.5	1.2	1.2	1.2	1.0
2022 January/r	2.4	1.7	1.8	1.8	1.7
February	1.4	2.1	2.2	2.3	2.0
March	-0.6	2.5	2.7	2.8	2.5

Table 5.0: Honiara Consumer Price Index by Group (2017=100.0)

Year/ Month	Food & Non-Alcoholic Beverages	Alcoholic beverages, tobacco narcotics	Clothing & footwear	Housing, water, electricity, gas & other fuels	Furnishings, household equipment & routine household maintenance	Health	Transport	Communication	Recreation & culture	Education	Restaurants & hotels	Miscellaneous goods & services	All Items
2020 March	104.7	175.7	100.0	114.5	97.3	109.6	102.4	100.0	100.0	128.9	104.0	98.9	114.1
April	104.9	175.8	100.0	113.5	97.3	109.6	99.0	100.0	100.0	128.9	104.0	98.9	113.4
May	105.2	173.0	100.0	111.0	96.7	109.6	96.0	100.0	100.0	128.9	104.0	98.9	112.2
June	104.2	140.1	100.0	110.9	96.6	109.6	94.6	100.0	100.0	128.9	104.0	98.9	107.6
July	103.6	129.0	100.0	110.4	96.7	109.6	95.6	100.0	100.0	128.9	104.0	98.9	106.1
August	101.9	126.9	100.0	111.7	96.8	109.6	94.6	100.0	100.0	128.9	104.0	98.9	105.3
September	101.7	131.5	100.0	111.2	96.8	109.6	94.3	100.0	100.0	128.9	104.0	98.9	105.7
October	101.5	128.4	100.0	112.2	96.8	109.6	95.6	100.0	100.0	128.9	104.0	98.9	105.6
November	98.5	140.8	100.0	111.7	96.2	109.6	95.2	100.0	100.0	128.9	104.0	98.9	106.0
December	97.2	132.2	100.0	111.7	96.2	109.6	95.2	100.0	100.0	128.9	104.0	98.9	104.5
2021 January	96.3	154.4	101.0	116.0	92.5	109.6	96.8	100.0	100.7	124.9	104.0	98.9	107.8
February	97.3	185.1	103.1	113.5	91.6	107.1	98.0	100.0	99.7	124.9	104.0	97.9	111.6
March	100.8	192.2	103.1	115.7	91.8	107.1	96.8	100.0	99.7	124.9	104.0	97.9	113.8
April	99.3	166.2	102.2	118.2	91.8	107.1	99.5	100.0	99.7	124.9	104.0	97.9	111.1
May	99.1	166.4	102.3	116.1	92.1	107.1	99.3	100.0	99.7	124.9	102.7	108.5	110.8
June	99.3	140.9	102.1	115.5	92.1	107.5	99.7	100.0	101.6	124.9	102.7	102.7	107.6
July	99.0	133.8	101.5	116.0	93.2	107.5	100.6	100.0	101.2	124.9	103.3	102.7	106.9
August	98.4	135.3	100.5	117.5	94.4	113.2	101.5	100.0	99.7	124.9	103.8	102.7	107.3
September	97.9	139.7	100.5	118.7	94.2	107.5	102.0	100.0	99.7	124.9	103.8	102.7	108.0
October	99.2	136.1	100.5	119.5	93.7	110.0	102.2	100.0	99.7	124.9	103.8	102.7	108.1
November	99.1	135.9	100.5	119.0	94.0	110.0	103.2	100.0	99.8	124.9	105.5	102.7	108.2
December	99.9	134.6	100.5	121.1	94.2	110.0	103.5	100.0	99.8	124.9	105.5	102.7	108.7
2022 January r	100.8	139.8	100.5	123.7	94.0	110.0	101.8	100.0	99.8	124.9	105.5	102.7	109.8
February	101.6	140.1	100.5	123.6	94.3	110.0	103.0	100.0	99.8	129.8	105.5	102.7	110.4
March	119.3	104.6	101.2	130.7	103.3	72.8	108.6	100.0	113.4	123.7	111.9	131.8	116.1
Percentage Change in the CPI by Group													
<i>(a) on the previous month</i>													
2020 March	1.0	-0.7	0.0	0.1	-0.1	0.0	-1.7	0.0	0.0	0.0	0.0	0.0	-0.2
April	0.2	0.1	0.0	-0.9	0.0	0.0	-3.3	0.0	0.0	0.0	0.0	0.0	-0.6
May	0.3	-1.6	0.0	-2.2	-0.6	0.0	-3.0	0.0	0.0	0.0	0.0	0.0	-1.1
June	-1.0	-19.0	0.0	-0.1	-0.1	0.0	-1.5	0.0	0.0	0.0	0.0	0.0	-4.1
July	-0.6	-7.9	0.0	-0.5	0.1	0.0	1.1	0.0	0.0	0.0	0.0	0.0	-1.4
August	-1.6	-1.6	0.0	1.2	0.1	0.0	-1.0	0.0	0.0	0.0	0.0	0.0	-0.8
September	-0.2	3.6	0.0	-0.4	0.0	0.0	-0.3	0.0	0.0	0.0	0.0	0.0	0.4
October	-0.2	-2.4	0.0	0.9	0.0	0.0	1.4	0.0	0.0	0.0	0.0	0.0	-0.1
November	-3.0	9.7	0.0	-0.4	-0.6	0.0	-0.4	0.0	0.0	0.0	0.0	0.0	0.4
December	-1.3	-6.1	0.0	0.0	0.0	0.0	0.0	0.0	0.0	0.0	0.0	0.0	-1.4
2021 January	-0.9	16.8	1.0	3.8	-3.8	0.0	1.7	0.0	0.7	-3.1	0.0	0.0	3.2
February	1.0	19.9	2.1	-2.2	-1.0	-2.3	1.2	0.0	-1.0	0.0	0.0	-1.0	3.5
March	3.6	3.8	0.0	1.9	0.2	0.0	-1.2	0.0	0.0	0.0	0.0	0.0	2.0
April	-1.5	-13.5	-0.9	2.2	0.0	0.0	2.8	0.0	0.0	0.0	0.0	0.0	-2.4
May	-0.2	0.1	0.1	-1.8	0.3	0.0	-0.2	0.0	0.0	0.0	-1.3	10.8	-0.3
June	0.2	-15.3	-0.2	-0.5	0.0	0.4	0.4	0.0	1.9	0.0	0.0	1.3	-2.8
July	-0.3	-5.0	-0.6	0.4	1.2	0.0	0.9	0.0	-0.4	0.0	0.6	0.0	-0.7
August	-0.6	1.1	-1.0	1.3	1.3	0.0	0.9	-0.0	-1.5	0.0	0.5	0.0	0.4
September	-0.5	3.3	0.0	1.0	-0.2	0.0	0.5	0.0	0.0	0.0	0.0	0.0	0.7
October	1.3	-2.6	0.0	0.7	-0.5	2.3	0.2	0.0	0.0	0.0	0.0	0.0	0.1
November	-0.1	-0.1	0.0	-0.4	0.3	0.0	1.0	0.0	0.1	0.0	1.6	0.0	0.1
December	0.8	-1.0	0.0	1.8	0.2	0.0	0.3	0.0	0.0	0.0	0.0	0.0	0.5
2022 January r	0.9	0.7	10.3	0.0	0.0	0.0	0.0	0.0	-0.7	-13.1	0.0	0.7	0.3
February	0.7	2.0	1.3	0.0	-0.4	0.0	4.1	0.0	0.0	6.2	0.0	-0.5	1.0
March	1.4	-7.1	0.0	-1.0	0.6	-1.1	5.1	0.0	0.0	0.0	0.0	-0.1	0.1
<i>(b) on the same month a year ago</i>													
2020 March	1.7	52.1	-0.4	1.5	0.3	9.6	1.2	0.0	0.0	0.0	0.0	0.0	7.9
April	4.3	51.6	-0.4	3.0	0.8	9.6	-3.7	0.0	0.0	0.0	0.0	0.0	8.2
May	5.2	49.1	-0.4	-0.7	0.2	9.6	-7.3	0.0	0.0	0.0	0.0	0.0	6.9
June	4.3	19.7	-0.4	0.1	0.0	9.6	-9.9	0.0	0.0	0.0	0.0	0.0	2.4
July	1.4	9.8	-0.4	-0.8	0.2	9.6	-7.4	0.0	0.0	0.0	0.0	0.0	0.4
August	0.7	6.5	-0.4	-0.5	0.3	9.6	-9.1	0.0	0.0	0.0	0.0	0.0	-0.6
September	0.8	6.4	-0.4	-1.2	0.1	9.6	-8.8	0.0	0.0	0.0	0.0	0.0	-0.6
October	-0.7	2.9	-0.4	-0.9	0.1	9.6	-7.6	0.0	0.0	0.0	0.0	0.0	-1.3
November	-3.9	11.6	-0.4	-1.8	-0.5	9.6	-8.4	0.0	0.0	0.0	0.0	0.0	-1.4
December	-4.4	3.5	-0.4	-2.4	-0.5	9.6	-8.5	0.0	0.0	0.0	0.0	0.0	-2.8
2021 January	-6.6	-12.3	1.0	0.2	-4.8	0.0	-7.1	0.0	0.7	-3.1	0.0	0.0	-5.6
February	-6.2	4.6	3.1	-0.8	-6.0	-2.3	-6.0	0.0	-0.3	-3.1	0.0	-1.0	-2.4
March	-3.7	9.4	3.1	1.0	-5.7	-2.3	-5.5	0.0	-0.3	-3.1	0.0	-1.0	-0.3
April	-5.3	-5.5	2.2	4.1	-5.7	-2.3	0.5	0.0	-0.3	-3.1	0.0	-1.0	-2.0
May	-5.8	-3.8	2.3	4.6	-4.8	-2.3	3.4	0.0	-0.3	-3.1	-1.3	9.7	-1.2
June	-4.7	0.6	2.1	4.1	-4.7	-1.9	5.4	0.0	1.6	-3.1	-1.3	3.8	0.0
July	-4.4	3.7	1.5	5.1	-3.6	-1.9	5.2	0.0	1.2	-3.1	-0.7	3.8	0.8
August	-3.4	6.6	0.5	5.2	-2.5	3.3	7.3	0.0	-0.3	-3.1	-0.2	3.8	1.9
September	-3.7	6.2	0.5	6.7	-2.7	-1.9	8.2	0.0	-0.3	-3.1	-0.2	3.8	2.2
October	-2.3	6	0.5	6.5	-3.2	0.4	6.9	0	-0.3	-3.1	-0.2	3.8	2.4
November	0.6	-3.5	0.5	6.5	-2.3	0.4	8.4	0.0	-0.2	-3.1	1.4	3.8	2.1
December	2.8	1.8	0.5	8.4	-2.1	0.4	8.7	0.0	-0.2	-3.1	1.4	3.8	4.0
2022 January r	4.7	-9.5	-0.5	6.6	1.6	0.4	5.2	0.0	-0.9	0.0	1.4	3.8	1.9
February	4.4	-24.3	-2.5	8.9	2.9	2.7	5.1	0.0	0.1	3.9	1.4	4.9	-1.1
March	2.2	-32.3	-2.5	5.8	3.4	1.6	11.9	0.0	0.1	3.9	1.4	4.8	-2.9

Table 5.1: Honiara Consumer Price Index by Group (2017=100.0)

Year/ Month	Food & Non-Alcoholic Beverages	Alcoholic beverages, tobacco narcotics	Clothing & footwear	Housing, water, electricity, gas & other fuels	Furnishings, household equipment & routine household maintenance	Health	Transport	Communication	Recreation & culture	Education	Restaurants & hotels	Miscellaneous goods & services	All Items
Percentage Change in the CPI by Group													
<i>(c) 3 months moving average on same period a year ago</i>													
2020 March	2.0	52.0	-0.3	4.5	0.3	9.6	2.0	0.0	0.0	0.0	0.0	0.0	8.9
April	2.5	52.4	-0.4	3.9	0.6	9.6	0.5	0.0	0.0	0.0	0.0	0.0	8.6
May	3.7	50.9	-0.4	1.3	0.4	9.6	-3.3	0.0	0.0	0.0	0.0	0.0	7.7
June	4.6	40.1	-0.4	0.8	0.3	9.6	-7.0	0.0	0.0	0.0	0.0	0.0	5.8
July	3.6	26.1	-0.4	-0.5	0.1	9.6	-8.2	0.0	0.0	0.0	0.0	0.0	3.2
August	2.1	12.0	-0.4	-0.4	0.2	9.6	-8.8	0.0	0.0	0.0	0.0	0.0	0.7
September	1.0	7.6	-0.4	-0.8	0.2	9.6	-8.4	0.0	0.0	0.0	0.0	0.0	-0.3
October	0.3	5.3	-0.4	-0.9	0.2	9.6	-8.5	0.0	0.0	0.0	0.0	0.0	-0.8
November	-1.3	7.0	-0.4	-1.3	-0.1	9.6	-8.3	0.0	0.0	0.0	0.0	0.0	-1.1
December	-3.0	6.0	-0.4	-1.7	-0.3	9.6	-8.2	0.0	0.0	0.0	0.0	0.0	-1.8
2021 January	-5.0	-0.6	0.1	-1.3	-2.0	6.2	-8.0	0.0	0.2	-1.0	0.0	0.0	-3.3
February	-5.7	-1.9	1.2	-1.0	-3.8	2.2	-7.2	0.0	0.1	-2.1	0.0	-0.3	-3.6
March	-5.5	0.6	2.4	0.1	-5.5	-1.5	-6.2	0.0	0.0	-3.1	0.0	-0.7	-2.7
April	-5.1	2.8	2.8	1.5	-5.8	-2.3	-3.7	0.0	-0.3	-3.1	0.0	-1.0	-1.6
May	-5.0	0.1	2.5	3.2	-5.4	-2.3	-0.6	0.0	-0.3	-3.1	-0.4	2.6	-1.2
June	-5.3	-3.1	2.2	4.3	-5.0	-2.2	3.1	0.0	0.3	-3.1	-0.8	1.8	-1.1
July	-5.0	-0.2	2.0	4.6	-4.3	-2.0	4.7	0.0	0.8	-3.1	-1.1	3.4	-0.2
August	-4.2	3.5	1.4	4.8	-3.6	-0.2	6.0	0.0	0.8	-3.1	-0.7	3.8	0.9
September	-3.9	5.5	0.8	5.7	-2.9	-1.9	6.9	0.0	0.2	-3.1	-0.4	3.8	1.6
October	-3.1	6.3	0.5	6.1	-2.8	-1.2	7.5	0.0	-0.3	-3.1	-0.2	3.8	2.1
November	-1.8	2.7	0.5	6.6	-2.7	-0.4	7.8	0.0	-0.3	-3.1	0.4	3.8	2.2
December	0.3	1.3	0.5	7.2	-2.5	0.4	8.0	0.0	-0.2	-3.1	0.9	3.8	2.8
2022 January /r	2.7	-4.0	0.1	7.2	-0.9	0.4	7.4	0.0	-0.4	-2.1	1.4	3.8	2.7
February	4.0	-12.1	-0.9	7.9	0.9	1.2	6.3	0.0	-0.3	0.2	1.4	4.2	1.6
March	3.8	-22.9	-1.9	7.1	2.7	1.6	7.4	0.0	-0.2	2.6	1.4	4.5	-0.8
Consumer Price Index - Annual (2017=100.0)													
2010	90.1	49.1	82.3	57.2	93.6	56.5	90.3	119.7	81.1	85.5	69.7	99.5	79.0
2011	94.0	56.4	83.3	68.5	98.0	55.9	98.0	84.2	83.0	89.1	80.5	103.2	84.8
2012	97.9	58.7	83.9	79.8	102.3	71.9	98.0	78.4	87.5	89.6	89.2	108.6	89.8
2013	100.3	64.3	92.1	92.7	100.8	78.0	100.0	78.4	87.5	83.9	95.1	111.3	94.6
2014	103.5	80.9	95.9	101.0	101.8	84.9	101.2	78.4	87.5	88.1	96.1	114.9	99.6
2015	100.4	82.3	104.6	100.7	103.2	93.2	97.3	100.0	96.1	94.2	96.1	116.9	99.0
2016	100.9	91.9	103.9	99.2	102.6	100.0	97.3	100.0	99.6	94.2	96.1	110.7	99.5
2017	100.0	100.0	100.0	100.0	100.0	100.0	100.0	100.0	100.0	100.0	100.0	100.0	100.0
2018	101.9	112.2	100.2	102.5	98.7	100.0	104.3	100.0	100.0	122.7	104.9	99.0	103.6
2019 /r	101.4	119.6	100.4	111.7	96.7	100.0	103.2	100.0	100.0	128.9	104.0	98.9	105.8
2020	102.5	150.5	100.0	112.4	96.8	109.6	97.6	100.0	100.0	128.9	104.0	98.9	109.1
2021	98.8	151.7	101.5	117.2	93.0	108.2	100.3	100.0	100.1	124.9	103.9	101.1	109.2
(d) Annual Percentage Change													
2010	-2.9	11.8	8.7	-0.9	3.8	1.1	7.2	-11.0	1.0	11.9	7.9	5.5	0.9
2011	4.4	14.8	1.2	19.7	4.7	-1.1	8.5	-29.6	2.4	4.3	15.4	3.7	7.4
2012	4.1	4.0	0.7	16.5	4.4	28.5	0.0	-6.9	5.4	0.5	10.8	5.2	5.9
2013	2.4	9.5	9.8	16.1	-1.4	8.5	2.0	0.0	0.0	-6.3	6.6	2.5	5.3
2014	3.2	25.8	4.1	9.0	1.0	8.8	1.3	0.0	0.0	5.0	1.1	3.3	5.3
2015	-3.0	1.8	9.1	-0.3	1.4	9.8	-3.9	27.5	9.8	7.0	0.0	1.7	-0.6
2016	0.5	11.6	-0.7	-1.5	-0.6	7.3	0.0	0.0	3.6	0.0	0.0	-5.3	0.5
2017	-0.9	8.9	-3.7	0.8	-2.6	0.0	2.8	0.0	0.4	6.1	4.0	-9.7	0.5
2018	1.9	12.2	0.2	2.5	-1.3	0.0	4.3	0.0	0.0	22.7	4.9	-1.0	3.6
2019	-0.5	6.6	0.2	8.9	-2.0	0.0	-1.1	0.0	0.0	5.1	-0.9	-0.1	2.1
2020	1.1	25.8	-0.4	0.7	0.1	9.6	-5.4	0.0	0.0	0.0	0.0	0.0	3.1
2021	-3.6	0.8	1.5	4.3	-4.0	-1.3	2.8	0.0	0.1	-3.1	-0.1	2.2	0.1

Table 6.0: Auki Consumer Price Index by Group (2017=100.0)

Year/ Month	Food & Non-Alcoholic Beverages	Alcoholic beverages, tobacco narcotics	Clothing & footwear	Housing, water, electricity, gas & other fuels	Furnishings, household equipment & routine household maintenance	Health	Transport	Communication	Recreation & culture	Education	Restaurants & hotels	Miscellaneous goods & services	All Items
2020 March	112.0	117.0	98.8	122.4	99.1	70.2	111.8	100.0	113.4	123.7	105.5	115.8	112.9
April	115.5	117.0	101.6	121.2	99.4	70.2	109.2	100.0	113.4	123.7	105.5	123.1	114.0
May	112.6	113.0	101.6	122.8	99.5	72.8	109.2	100.0	113.4	123.7	105.5	131.0	112.8
June	110.6	117.1	101.6	124.1	99.4	72.8	109.2	100.0	113.4	123.7	105.5	131.8	112.7
July	110.6	117.1	101.6	119.4	99.4	72.8	108.6	100.0	113.4	123.7	105.5	131.8	111.8
August	110.6	117.1	101.6	122.4	99.4	72.8	108.6	100.0	113.4	123.7	105.5	131.8	112.3
September	110.6	117.1	101.6	121.4	99.4	72.8	108.6	100.0	113.4	123.7	105.5	131.8	112.1
October	107.7	117.0	101.6	123.0	99.2	72.8	108.6	100.0	113.4	123.7	105.5	131.8	111.2
November	108.2	117.0	101.6	122.3	99.2	72.8	108.6	100.0	113.4	123.7	105.5	131.8	111.3
December	108.8	117.4	101.6	124.4	99.2	72.8	108.6	100.0	113.4	123.7	105.5	131.8	112.0
2021 January	109.7	117.8	101.6	125.5	99.2	72.8	108.6	100.0	113.4	123.7	105.5	131.8	112.5
February	110.6	118.2	101.6	125.4	99.2	72.8	108.6	100.0	113.4	123.7	105.5	131.8	113.0
March	110.6	118.7	101.6	126.8	99.2	72.8	108.6	100.0	113.4	123.7	105.5	131.8	113.2
April	110.5	118.7	101.6	128.2	99.2	72.8	108.6	100.0	113.4	123.7	105.5	131.8	113.5
May	109.5	118.7	101.6	122.6	99.2	72.8	108.6	100.0	113.4	123.7	105.5	131.8	112.1
June	112.1	114.1	101.2	121.7	99.3	72.8	108.6	100.0	113.4	123.7	105.5	131.8	112.4
July	110.8	110.3	101.2	123.3	99.3	72.8	108.6	100.0	113.4	123.7	105.5	131.8	111.8
August	110.8	110.3	101.2	124.1	99.3	72.8	108.6	100.0	113.4	123.7	105.5	131.8	111.9
September	110.8	110.3	101.2	126.1	99.3	72.8	108.6	100.0	113.4	123.7	105.5	131.8	112.3
October	114.5	113.8	101.2	126.2	100.9	72.8	108.6	100.0	113.4	123.7	105.5	131.8	114.2
November	113.3	107.1	101.2	123.3	100.9	72.8	108.6	100.0	113.4	123.7	105.5	131.8	112.5
December	113.3	107.1	101.2	126.0	100.9	72.8	108.6	100.0	113.4	123.7	105.5	131.8	112.9
2022 January /r	114.7	106.2	101.2	128.5	101.5	72.8	108.6	100.0	113.4	123.7	105.5	131.8	113.9
February	115.3	104.7	101.2	130.9	101.4	72.8	108.6	100.0	113.4	123.7	105.5	131.8	114.4
March	119.3	104.6	101.2	130.7	103.3	72.8	108.6	100.0	113.4	123.7	111.9	131.8	116.1
Percentage Change in the CPI by Group													
<i>(a) on the previous month</i>													
2020 March	3.0	0.0	0.0	2.5	0.2	0.0	-1.1	0.0	0.0	0.0	0.0	0.0	1.5
April	3.1	0.0	2.8	-1.0	0.3	0.0	-2.3	0.0	0.0	0.0	0.0	6.3	1.0
May	-2.5	-3.4	0.0	1.3	0.1	3.7	0.0	0.0	0.0	0.0	0.0	6.4	-1.1
June	-1.8	3.6	0.0	1.1	-0.1	0.0	0.0	0.0	0.0	0.0	0.0	0.6	-0.1
July	0.0	0.0	0.0	-3.8	0.0	0.0	-0.5	0.0	0.0	0.0	0.0	0.0	-0.8
August	0.0	0.0	0.0	2.5	0.0	0.0	0.0	0.0	0.0	0.0	0.0	0.0	0.4
September	0.0	0.0	0.0	-0.8	0.0	0.0	0.0	0.0	0.0	0.0	0.0	0.0	-0.2
October	-2.6	-0.1	0.0	1.3	-0.2	0.0	0.0	0.0	0.0	0.0	0.0	0.0	-0.8
November	0.5	0.0	0.0	-0.6	0.0	0.0	0.0	0.0	0.0	0.0	0.0	0.0	0.1
December	0.6	0.3	0.0	1.7	0.0	0.0	0.0	0.0	0.0	0.0	0.0	0.0	0.6
2021 January	0.8	0.3	0.0	0.9	0.0	0.0	0.0	0.0	0.0	0.0	0.0	0.0	0.4
February	0.8	0.3	0.0	-0.1	0.0	0.0	0.0	0.0	0.0	0.0	0.0	0.0	0.4
March	0.0	0.4	0.0	1.1	0.0	0.0	0.0	0.0	0.0	0.0	0.0	0.0	0.2
April	-0.1	0.0	0.0	1.1	0.0	0.0	0.0	0.0	0.0	0.0	0.0	0.0	0.3
May	-0.9	0.0	0.0	-4.4	0.0	0.0	0.0	0.0	0.0	0.0	0.0	0.0	-1.2
June	2.4	-3.9	-0.4	-0.7	0.1	0.0	0.0	0.0	0.0	0.0	0.0	0.0	0.3
July	-1.2	-3.3	0.0	1.3	0.0	0.0	0.0	0.0	0.0	0.0	0.0	0.0	-0.5
August	0.0	0.0	0.0	0.6	0.0	0.0	0.0	0.0	0.0	0.0	0.0	0.0	0.1
September	0.0	0.0	0.0	1.6	0.0	0.0	0.0	0.0	0.0	0.0	0.0	0.0	0.4
October	3.3	3.2	0.0	0.1	1.6	0.0	3.0	0.0	0.0	0.0	0.0	0.0	1.7
November	-1.0	-5.9	0.0	-2.3	0.0	0.0	0.0	0.0	0.0	0.0	0.0	0.0	-1.5
December	0.0	0.0	0.0	2.2	0.0	0.0	0.0	0.0	0.0	0.0	0.0	0.0	0.4
2022 January /r	1.2	-0.6	0.0	2.0	0.6	0.0	0.0	0.0	0.0	0.0	0.0	0.0	0.9
February	0.5	-1.4	0.0	1.9	-0.1	0.0	0.0	0.0	0.0	0.0	0.0	0.0	0.4
March	3.5	-0.1	0.0	-0.2	1.9	0.0	0.0	0.0	0.0	0.0	6.1	0.0	1.5
<i>(b) on the same month a year ago</i>													
2020 March	11.6	2.3	0.0	7.3	0.9	0.0	0.6	0.0	1.7	0.0	0.0	0.0	6.2
April	14.7	2.3	2.8	8.4	1.8	0.0	-2.7	0.0	0.0	0.0	0.0	6.3	7.4
May	13.4	-1.2	2.8	9.9	4.5	3.7	-3.2	0.0	0.0	0.0	0.0	13.1	6.9
June	11.8	1.9	2.8	11.3	0.7	3.7	-3.7	0.0	0.0	0.0	0.0	13.8	6.7
July	7.7	1.7	2.8	3.9	0.7	3.7	-4.1	0.0	0.0	0.0	0.0	13.8	3.8
August	4.4	1.6	2.8	4.7	0.7	3.7	-3.9	0.0	0.0	0.0	0.0	13.8	2.7
September	4.4	0.5	2.8	3.8	0.7	3.7	-3.9	0.0	0.0	0.0	0.0	13.8	2.4
October	1.7	0.0	2.8	3.8	0.5	3.7	-3.9	0.0	0.0	0.0	0.0	13.8	1.2
November	0.6	0.0	2.8	2.8	0.5	3.7	-3.9	0.0	0.0	0.0	0.0	13.8	0.6
December	0.6	0.3	2.8	5.2	0.5	3.7	-3.9	0.0	0.0	0.0	0.0	13.8	1.2
2021 January	1.4	0.7	2.8	7.4	0.4	3.7	-4.0	0.0	0.0	0.0	0.0	13.8	1.8
February	1.7	1.0	2.8	5.0	0.3	3.7	-4.0	0.0	0.0	0.0	0.0	13.8	1.6
March	-1.3	1.5	2.8	3.6	0.1	3.7	-2.9	0.0	0.0	0.0	0.0	13.8	0.3
April	-4.3	1.5	0.0	5.8	-0.2	3.7	-0.5	0.0	0.0	0.0	0.0	7.1	-0.4
May	-0.9	0.0	0.0	-4.4	0.0	0.0	0.0	0.0	0.0	0.0	0.0	0.0	-1.2
June	1.4	-2.6	-0.4	-1.9	-0.1	0.0	-0.5	0.0	0.0	0.0	0.0	0.0	-0.3
July	0.2	-5.8	-0.4	3.3	-0.1	0.0	0.0	0.0	0.0	0.0	0.0	0.0	0.0
August	0.2	-5.8	-0.4	1.4	-0.1	0.0	0.0	0.0	0.0	0.0	0.0	0.0	-0.4
September	0.2	-5.8	-0.4	3.9	-0.1	0.0	0.0	0.0	0.0	0.0	0.0	0.0	0.2
October	6.3	-2.7	-0.4	2.6	1.7	0.0	0.0	0.0	0.0	0.0	0.0	0.0	2.7
November	4.7	-8.5	-0.4	0.8	1.7	0.0	0.0	0.0	0.0	0.0	0.0	0.0	1.1
December	4.1	-8.8	-0.4	1.3	1.7	0.0	0.0	0.0	0.0	0.0	0.0	0.0	0.8
2022 January /r	4.6	-9.5	-0.4	2.4	2.3	0.0	0.0	0.0	0.0	0.0	0.0	0.0	1.2
February	4.2	-11.1	-0.4	4.4	2.2	0.0	0.0	0.0	0.0	0.0	0.0	0.0	1.3
March	7.9	-11.6	-0.4	3.1	4.1	0.0	0.0	0.0	0.0	0.0	6.1	0.0	2.6

Table 6.1: Auki Consumer Price Index by Group (2017=100.0)

Year/ Month	Food & Non-Alcoholic Beverages	Alcoholic beverages, tobacco narcotics	Clothing & footwear	Housing, water, electricity, gas & other fuels	Furnishings, household equipment & routine household maintenance	Health	Transport	Communication	Recreation & culture	Education	Restaurants & hotels	Miscellaneous goods & services	All Items
Percentage Change in the CPI by Group													
<i>(c) 3 months moving average on same period a year ago</i>													
2020 March	8.1	4.6	0.1	8.2	-0.7	0.0	1.4	0.0	1.7	-0.3	0.0	6.8	5.5
April	10.6	2.3	0.9	9.6	0.5	0.0	0.1	0.0	1.1	0.0	0.0	5.5	6.3
May	13.2	1.1	1.9	8.5	2.4	1.2	-1.8	0.0	0.6	0.0	0.0	6.5	6.9
June	13.3	1.0	2.8	9.9	2.3	2.5	-3.2	0.0	0.0	0.0	0.0	11.1	7.0
July	10.9	0.8	2.8	8.3	1.9	3.7	-3.7	0.0	0.0	0.0	0.0	13.6	5.8
August	7.9	1.7	2.8	6.6	0.7	3.7	-3.9	0.0	0.0	0.0	0.0	13.8	4.4
September	5.5	1.3	2.8	4.2	0.7	3.7	-4.0	0.0	0.0	0.0	0.0	13.8	2.9
October	3.5	0.7	2.8	4.1	0.6	3.7	-3.9	0.0	0.0	0.0	0.0	13.8	2.1
November	2.2	0.2	2.8	3.5	0.6	3.7	-3.9	0.0	0.0	0.0	0.0	13.8	1.4
December	1.0	0.1	2.8	3.9	0.5	3.7	-3.9	0.0	0.0	0.0	0.0	13.8	1.0
2021 January	0.9	0.3	2.8	5.1	0.5	3.7	-3.9	0.0	0.0	0.0	0.0	13.8	1.2
February	1.3	0.7	2.8	5.9	0.4	3.7	-4.0	0.0	0.0	0.0	0.0	13.8	1.5
March	0.6	1.1	2.8	5.3	0.3	3.7	-3.6	0.0	0.0	0.0	0.0	13.8	1.2
April	-1.3	1.3	1.9	4.8	0.1	3.7	-2.5	0.0	0.0	0.0	0.0	11.5	0.5
May	-2.8	2.6	0.9	3.1	-0.1	2.4	-1.3	0.0	0.0	0.0	0.0	6.9	-0.3
June	-1.9	1.3	-0.1	1.2	-0.2	1.2	-0.5	0.0	0.0	0.0	0.0	2.5	-0.4
July	-0.4	-1.2	-0.3	0.4	-0.2	0.0	-0.4	0.0	0.0	0.0	0.0	0.2	-0.3
August	0.6	-4.7	-0.4	0.9	-0.1	0.0	-0.2	0.0	0.0	0.0	0.0	0.0	-0.2
September	0.2	-5.8	-0.4	2.8	-0.1	0.0	0.0	0.0	0.0	0.0	0.0	0.0	-0.1
October	2.2	-4.8	-0.4	2.6	0.5	0.0	0.0	0.0	0.0	0.0	0.0	0.0	0.8
November	3.7	-5.7	-0.4	2.4	1.1	0.0	0.0	0.0	0.0	0.0	0.0	0.0	1.3
December	5.1	-6.7	-0.4	1.6	1.7	0.0	0.0	0.0	0.0	0.0	0.0	0.0	1.5
2022 January/r	4.5	-8.8	-0.4	1.5	1.9	0.0	0.0	0.0	0.0	0.0	0.0	0.0	1.1
February	4.3	-9.8	-0.4	2.7	2.1	0.0	0.0	0.0	0.0	0.0	0.0	0.0	1.2
March	5.6	-10.7	-0.4	3.3	2.9	0.0	0.0	0.0	0.0	0.0	2.0	0.0	1.7
Auki Consumer Price Index - Annual (2017 =100.0)													
2010	90.1	49.1	82.3	57.2	93.6	56.5	90.3	119.7	81.1	85.5	69.7	99.5	79.0
2011	94.0	56.4	83.3	68.5	98.0	55.9	98.0	84.2	83.0	89.1	80.5	103.2	84.8
2012	97.9	58.7	83.9	79.8	102.3	71.9	98.0	78.4	87.5	89.6	89.2	108.6	89.8
2013	100.3	64.3	92.1	92.7	100.8	78.0	100.0	78.4	87.5	83.9	95.1	111.3	94.6
2014	103.5	80.9	95.9	101.0	101.8	84.9	101.2	78.4	87.5	88.1	96.1	114.9	99.6
2015	100.4	82.3	104.6	100.7	103.2	93.2	97.3	100.0	96.1	94.2	96.1	116.9	99.0
2016	100.9	91.9	103.9	99.2	102.6	100.0	97.3	100.0	99.6	94.2	96.1	110.7	99.5
2017	100.0	100.0	100.0	100.0	100.0	100.0	100.0	100.0	100.0	100.0	100.0	100.0	100.0
2018	103.0	112.4	100.2	106.0	99.8	100.0	104.1	100.0	100.0	122.9	105.5	99.0	104.6
2019	103.3	114.8	98.8	114.2	98.6	70.2	112.5	100.0	112.9	123.8	105.5	114.0	107.7
2020	110.3	116.7	100.9	121.6	99.2	71.9	109.8	100.0	113.4	123.7	105.5	127.0	112.1
2021	111.4	113.8	101.4	124.9	99.7	72.8	108.6	100.0	113.4	123.7	105.5	131.8	112.7
<i>(d) Annual Percentage Change</i>													
2010	-2.9	11.8	8.7	-0.9	3.8	1.1	7.2	-11.0	1.0	11.9	7.9	5.5	0.9
2011	4.4	14.8	1.2	19.7	4.7	-1.1	8.5	-29.6	2.4	4.3	15.4	3.7	7.4
2012	4.1	4.0	0.7	16.5	4.4	28.5	0.0	-6.9	5.4	0.5	10.8	5.2	5.9
2013	2.4	9.5	9.8	16.1	-1.4	8.5	2.0	0.0	0.0	-6.3	6.6	2.5	5.3
2014	3.2	25.8	4.1	9.0	1.0	8.8	1.3	0.0	0.0	5.0	1.1	3.3	5.3
2015	-3.0	1.8	9.1	-0.3	1.4	9.8	-3.9	27.5	9.8	7.0	0.0	1.7	-0.6
2016	0.5	11.6	-0.7	-1.5	-0.6	7.3	0.0	0.0	3.6	0.0	0.0	-5.3	0.5
2017	-0.9	8.9	-3.7	0.8	-2.6	0.0	2.8	0.0	0.4	6.1	4.0	-9.7	0.5
2018	3.0	12.4	0.2	6.0	-0.2	0.0	4.1	0.0	0.0	22.9	5.5	-1.0	4.6
2019	0.3	2.1	-1.4	7.8	-1.2	-29.8	8.1	0.0	12.9	0.7	0.0	15.1	3.0
2020	6.9	1.7	2.2	6.5	0.7	2.5	-2.4	0.0	0.4	-0.1	0.0	11.5	4.1
2021	0.9	-2.5	0.5	2.7	0.4	1.2	-1.1	0.0	0.0	0.0	0.0	3.8	0.6

Table 7.0: Gizo Consumer Price Index by Group (2017=100.0)

Year/ Month	Food & Non-Alcoholic Beverages	Alcoholic beverages, tobacco & narcotics	Clothing & footwear	Housing, water, electricity, gas & other fuels	Furnishings, household equipment & routine household maintenance	Health	Transport	Communication	Recreation & culture	Education	Restaurants & hotels	Miscellaneous goods & services	All Items
2020 March	102.2	107.8	100.1	105.9	102.0	100.0	108.3	100.0	107.2	125.0	105.0	105.1	104.4
April	104.4	107.8	98.2	104.6	102.0	100.0	107.7	100.0	107.2	125.0	105.0	105.1	105.1
May	107.4	107.8	98.2	103.0	102.5	100.0	106.6	100.0	106.0	125.0	105.0	105.5	106.0
June	107.0	107.8	99.2	102.9	101.5	100.0	106.6	100.0	105.0	125.0	105.0	105.6	105.8
July	107.0	107.8	98.2	102.9	101.5	100.0	106.6	100.0	105.0	125.0	105.0	105.6	105.8
August	107.0	107.8	98.8	105.2	101.5	100.0	106.6	100.0	105.0	125.0	105.0	105.6	106.1
September	105.9	107.8	98.9	104.3	101.3	100.0	106.6	100.0	105.9	125.0	105.0	105.6	105.5
October	104.9	107.8	99.0	105.7	101.2	100.0	106.6	100.0	107.0	125.0	105.0	105.6	105.3
November	101.9	108.0	97.5	105.2	101.1	100.0	106.6	100.0	108.2	125.0	105.0	105.8	103.9
December	103.5	108.0	98.4	106.8	101.2	100.0	106.6	100.0	109.7	125.0	105.0	105.7	104.9
2021 January	96.4	108.0	97.9	107.8	101.7	100.0	106.7	100.0	109.7	126.9	105.0	105.2	101.9
February	107.8	108.0	98.8	106.9	101.7	100.0	106.7	100.0	109.7	126.9	105.0	105.2	106.9
March	108.9	109.4	100.3	106.9	101.7	100.0	106.7	100.0	109.7	126.9	105.0	105.2	107.5
April	112.9	99.8	98.4	107.3	101.5	100.0	106.7	100.0	109.7	126.9	105.0	105.2	108.3
May	113.5	109.4	98.9	103.0	101.7	100.0	106.7	100.0	109.7	130.7	98.7	105.5	109.0
June	109.8	114.2	98.7	102.3	101.4	100.0	105.0	100.0	109.7	130.7	93.2	105.2	107.4
July	114.0	123.6	98.8	103.7	101.5	100.0	103.3	100.0	109.4	130.7	98.7	105.2	110.1
August	114.6	125.1	98.7	113.5	101.5	100.0	103.3	100.0	109.4	130.7	98.7	105.1	111.9
September	118.2	128.6	98.7	117.6	101.3	100.0	103.3	100.0	109.4	130.7	98.7	105.7	114.3
October	114.3	129.0	99.0	119.7	101.3	100.0	105.3	100.0	109.4	130.7	98.7	104.5	113.2
November	115.7	129.1	98.6	118.6	103.2	100.0	107.6	100.0	109.4	130.7	98.7	103.4	114.0
December	114.2	129.1	98.6	119.7	101.6	100.0	107.6	100.0	109.4	130.7	98.7	103.4	113.5
2022 January /r	106.5	138.1	98.0	121.2	101.6	100.0	107.6	100.0	109.4	130.7	98.7	104.9	111.1
February	107.1	139.4	97.6	121.0	101.0	100.0	116.6	100.0	109.4	130.7	98.7	107.6	112.7
March	112.9	138.0	97.1	121.6	101.9	100.0	113.7	100.0	109.4	130.7	98.7	108.8	114.8
Percentage Change in the CPI by Group													
<i>(a) on the previous month</i>													
2020 March	0.7	0.0	0.2	1.9	0.3	0.0	0.0	0.0	0.0	0.0	0.0	0.0	0.6
April	2.2	0.0	-1.9	-1.2	0.0	0.0	-0.6	0.0	0.0	0.0	0.0	0.0	0.7
May	2.9	0.0	0.0	-1.5	0.5	0.0	-1.0	0.0	-1.1	0.0	0.0	0.4	0.9
June	-0.4	0.0	1.0	-0.1	-1.0	0.0	0.0	0.0	-0.9	0.0	0.0	0.1	-0.2
July	0.0	0.0	-1.0	0.0	0.0	0.0	0.0	0.0	0.0	0.0	0.0	0.0	0.0
August	0.0	0.0	0.6	2.2	0.0	0.0	0.0	0.0	0.0	0.0	0.0	0.0	0.3
September	-1.0	0.0	0.1	-0.9	-0.2	0.0	0.0	0.0	0.9	0.0	0.0	0.0	-0.6
October	-0.9	0.0	0.1	1.3	-0.1	0.0	0.0	0.0	1.0	0.0	0.0	0.0	-0.2
November	-2.9	0.2	-1.5	-0.5	-0.1	0.0	0.0	0.0	1.1	0.0	0.0	0.2	-1.3
December	1.6	0.0	0.9	1.5	0.1	0.0	0.0	0.0	1.4	0.0	0.0	-0.1	1.0
2021 January	-6.9	0.0	-0.5	0.9	0.5	0.0	0.1	0.0	0.0	1.5	0.0	-0.5	-2.9
February	11.8	0.0	0.9	-0.8	0.0	0.0	0.0	0.0	0.0	0.0	0.0	0.0	4.9
March	1.0	1.3	1.5	0.0	0.0	0.0	0.0	0.0	0.0	0.0	0.0	0.0	0.6
April	3.7	-8.8	-1.9	0.1	-0.2	0.0	0.0	0.0	0.0	0.0	0.0	0.0	0.7
May	0.5	0.0	0.5	-4.0	0.2	0.0	0.0	0.0	0.0	3.0	-6.0	0.3	-0.2
June	-3.3	4.4	-0.2	-0.7	-0.3	0.0	-1.6	0.0	0.0	0.0	-5.6	-0.3	-1.5
July	3.8	8.2	0.1	1.4	0.1	0.0	-1.6	0.0	-0.3	0.0	0.0	0.0	2.4
August	0.5	1.2	-0.1	9.5	0.0	0.0	0.0	0.0	0.0	0.0	0.0	-0.1	1.6
September	3.1	2.8	0.0	3.6	-0.2	0.0	0.0	0.0	0.0	0.0	0.0	0.6	2.1
October	-3.3	0.3	0.3	1.8	0.0	0.0	1.9	0.0	0.0	0.0	0.0	-1.1	-1.0
November	1.2	0.1	-0.4	-0.9	1.9	0.0	2.2	0.0	0.0	0.0	0.0	-1.1	0.7
December	-1.3	0.0	0.0	1.8	0.0	0.0	0.0	0.0	0.0	0.0	0.0	0.0	-0.3
2022 January /r	-6.7	7.7	-0.6	1.3	0.0	0.0	0.0	0.0	0.0	0.0	0.0	1.5	-2.0
February	0.6	0.9	-0.4	-0.2	-0.6	0.0	8.4	0.0	0.0	0.0	0.0	2.6	1.4
March	5.4	-1.0	-0.5	0.5	0.1	0.0	-2.5	0.0	0.0	0.0	0.0	1.1	1.9
<i>(b) on the same month a year ago</i>													
2020 March	-0.5	-5.1	0.0	-0.1	4.4	0.0	2.0	0.0	7.2	-1.3	0.0	6.3	-0.2
April	3.7	-5.4	-1.9	2.5	5.3	0.0	0.3	0.0	7.2	-1.3	0.0	6.3	1.6
May	6.0	-2.8	-3.2	-1.8	3.4	0.0	-1.1	0.0	6.0	-1.3	0.0	6.7	2.1
June	5.3	-2.2	-2.2	0.2	1.1	0.0	-1.6	0.0	5.0	-1.3	0.0	4.0	1.9
July	5.5	-1.1	-3.2	-0.6	-0.6	0.0	-1.3	0.0	-1.9	0.0	0.0	-0.1	1.8
August	4.1	0.0	-2.7	1.7	-0.6	0.0	-1.3	0.0	-2.1	0.0	0.0	-0.1	1.6
September	0.7	0.0	-2.6	0.9	-0.8	0.0	-1.3	0.0	-1.2	0.0	0.0	-0.1	0.1
October	4.1	0.0	-2.5	1.2	-0.9	0.0	-1.3	0.0	-0.2	0.0	0.0	-0.1	1.6
November	0.4	0.2	-3.8	0.4	-1.0	0.0	-1.3	0.0	0.9	0.0	0.0	0.1	-0.1
December	1.7	0.2	-1.8	2.5	-0.9	0.0	-1.3	0.0	2.3	0.0	0.0	0.6	0.9
2021 January	-5.4	0.2	-2.3	4.4	-0.4	0.0	-1.5	0.0	2.3	1.5	0.0	0.1	-1.9
February	6.2	0.2	-1.1	2.9	0.0	0.0	-1.5	0.0	2.3	1.5	0.0	0.1	3.0
March	6.6	1.5	0.2	0.9	-0.3	0.0	-1.5	0.0	2.3	1.5	0.0	0.1	3.0
April	8.1	-7.4	0.2	2.6	-0.5	0.0	-0.9	0.0	2.3	1.5	0.0	0.1	3.0
May	5.7	1.5	0.7	0.0	-0.8	0.0	0.1	0.0	3.5	4.6	-6.0	0.0	2.8
June	2.6	5.9	-0.5	-0.6	-0.1	0.0	-1.5	0.0	4.5	4.6	-11.2	-0.4	1.5
July	6.5	14.7	0.6	0.8	0.0	0.0	-3.1	0.0	4.2	4.6	-6.0	-0.4	4.1
August	7.1	16.0	-0.1	7.9	0.0	0.0	-3.1	0.0	4.2	4.6	-6.0	-0.5	5.5
September	11.6	19.3	-0.2	12.8	0.0	0.0	-3.1	0.0	3.3	4.6	-6.0	0.1	8.3
October	9.0	19.7	0.0	13.2	0.1	0.0	-1.2	0.0	2.2	4.6	-6.0	-1.0	7.5
November	13.5	19.5	1.1	12.7	2.1	0.0	0.9	0.0	1.1	4.6	-6.0	-2.3	9.7
December	10.3	19.5	0.2	12.1	0.4	0.0	0.9	0.0	-0.3	4.6	-6.0	-2.2	8.2
2022 January /r	10.5	29.1	0.1	12.4	-0.1	0.0	0.8	0.0	-0.3	3.0	-6.0	-0.3	9.1
February	-0.6	30.3	-1.2	13.2	-0.7	0.0	9.3	0.0	-0.3	3.0	-6.0	2.3	5.5
March	3.7	27.2	-3.2	13.4	0.2	0.0	6.6	0.0	-0.3	3.0	-6.0	3.4	6.9

Table 7.1: Gizo Consumer Price Index by Group (2017=100.0)

Year/ Month	Food & Non-Alcoholic Beverages	Alcoholic beverages, tobacco narcotics	Clothing & footwear	Housing, water, electricity, gas & other fuels	Furnishings, household equipment & routine household maintenance	Health	Transport	Communication	Recreation & culture	Education	Restaurants & hotels	Miscellaneous goods & services	All Items
Percentage Change in the CPI by Group													
<i>(c) 3 months moving average on same period a year ago</i>													
2020 March	0.2	-5.4	0.0	1.6	4.1	0.0	2.4	0.0	7.2	-1.3	0.0	6.3	0.3
April	0.9	-5.1	-0.7	2.7	4.6	0.0	1.7	0.0	7.2	-1.3	0.0	6.3	0.7
May	3.1	-4.5	-1.7	0.2	4.4	0.0	0.4	0.0	6.8	-1.3	0.0	6.4	1.2
June	5.0	-3.5	-2.4	0.3	3.2	0.0	-0.8	0.0	6.1	-1.3	0.0	5.6	1.9
July	5.6	-2.0	-2.8	-0.7	1.3	0.0	-1.3	0.0	2.9	-0.9	0.0	3.5	2.0
August	5.0	-1.1	-2.7	0.5	0.0	0.0	-1.4	0.0	0.3	-0.5	0.0	1.2	1.8
September	3.4	-0.4	-2.8	0.7	-0.7	0.0	-1.3	0.0	-1.7	0.0	0.0	-0.1	1.2
October	2.9	0.0	-2.6	1.3	-0.8	0.0	-1.3	0.0	-1.2	0.0	0.0	-0.1	1.1
November	1.7	0.1	-3.0	0.8	-0.9	0.0	-1.3	0.0	-0.2	0.0	0.0	0.0	0.5
December	2.0	0.1	-2.7	1.4	-0.9	0.0	-1.3	0.0	1.0	0.0	0.0	0.2	0.8
2021 January	-1.1	0.2	-2.7	2.4	-0.8	0.0	-1.4	0.0	1.9	0.5	0.0	0.3	-0.4
February	0.8	0.2	-1.7	3.2	-0.4	0.0	-1.4	0.0	2.3	1.0	0.0	0.3	0.6
March	2.5	0.6	-1.1	2.7	-0.2	0.0	-1.5	0.0	2.3	1.5	0.0	0.1	1.3
April	7.0	-1.9	-0.2	2.2	-0.3	0.0	-1.3	0.0	2.3	1.5	0.0	0.1	3.0
May	6.8	1.5	0.4	1.3	-0.5	0.0	-0.8	0.0	2.7	2.5	-2.0	0.1	3.2
June	5.5	3.0	0.1	0.7	-0.5	0.0	-0.8	0.0	3.4	3.5	-5.7	-0.1	2.7
July	4.9	7.4	0.3	0.1	-0.3	0.0	-1.5	0.0	4.1	4.6	-6.0	-0.3	2.8
August	5.4	12.2	0.0	2.7	0.0	0.0	-2.6	0.0	4.3	4.6	-6.0	-0.4	3.7
September	8.4	16.7	0.1	7.2	0.0	0.0	-3.1	0.0	3.9	4.6	-6.0	-0.3	6.0
October	9.2	18.3	-0.1	11.3	0.0	0.0	-2.5	0.0	3.2	4.6	-6.0	-0.5	7.1
November	11.4	19.5	0.3	12.9	0.7	0.0	-1.1	0.0	2.2	4.6	-6.0	-1.1	8.5
December	10.9	19.6	0.4	12.4	0.3	0.0	0.2	0.0	1.0	4.6	-6.0	-1.8	8.4
2022 January /r	11.5	22.9	0.5	12.1	0.2	0.0	0.9	0.0	0.2	4.0	-6.0	-1.5	9.0
February	6.5	26.3	-0.3	12.6	-0.2	0.0	3.7	0.0	-0.3	3.5	-6.0	0.0	7.6
March	4.3	28.8	-1.4	13.1	0.0	0.0	5.6	0.0	-0.3	3.0	-6.0	1.8	7.1
Gizo Consumer Price Index - Annual (2017=100.0)													
2010	90.1	49.1	82.3	57.2	93.6	56.5	90.3	119.7	81.1	85.5	69.7	99.5	79.0
2011	94.0	56.4	83.3	68.5	98.0	55.9	98.0	84.2	83.0	89.1	80.5	103.2	84.8
2012	97.9	58.7	83.9	79.8	102.3	71.9	98.0	78.4	87.5	89.6	89.2	108.6	89.8
2013	100.3	64.3	92.1	92.7	100.8	78.0	100.0	78.4	87.5	83.9	95.1	111.3	94.6
2014	103.5	80.9	95.9	101.0	101.8	84.9	101.2	78.4	87.5	88.1	96.1	114.9	99.6
2015	100.4	82.3	104.6	100.7	103.2	93.2	97.3	100.0	96.1	94.2	96.1	116.9	99.0
2016	100.9	91.9	103.9	99.2	102.6	100.0	97.3	100.0	99.6	94.2	96.1	110.7	99.5
2017	100.0	100.0	100.0	100.0	100.0	100.0	100.0	100.0	100.0	100.0	100.0	100.0	100.0
2018	102.2	111.5	100.1	102.7	99.1	100.0	104.3	100.0	100.0	122.7	105.3	99.0	103.4
2019 /r	101.9	110.4	100.9	103.5	100.2	100.0	107.4	100.0	103.6	125.9	105.0	102.5	104.0
2020	104.6	107.8	98.9	104.5	101.6	100.0	107.1	100.0	106.7	125.0	105.0	105.5	105.0
2021	111.7	118.6	98.8	110.5	101.5	100.0	105.7	100.0	109.6	129.4	100.8	104.9	109.9
<i>(d) Annual Percentage Change</i>													
2010	-2.9	11.8	8.7	-0.9	3.8	1.1	7.2	-11.0	1.0	11.9	7.9	5.5	0.9
2011	4.4	14.8	1.2	19.7	4.7	-1.1	8.5	-29.6	2.4	4.3	15.4	3.7	7.4
2012	4.1	4.0	0.7	16.5	4.4	28.5	0.0	-6.9	5.4	0.5	10.8	5.2	5.9
2013	2.4	9.5	9.8	16.1	-1.4	8.5	2.0	0.0	0.0	-6.3	6.6	2.5	5.3
2014	3.2	25.8	4.1	9.0	1.0	8.8	1.3	0.0	0.0	5.0	1.1	3.3	5.3
2015	-3.0	1.8	9.1	-0.3	1.4	9.8	-3.9	27.5	9.8	7.0	0.0	1.7	-0.6
2016	0.5	11.6	-0.7	-1.5	-0.6	7.3	0.0	0.0	3.6	0.0	0.0	-5.3	0.5
2017	-0.9	8.9	-3.7	0.8	-2.6	0.0	2.8	0.0	0.4	6.1	4.0	-9.7	0.5
2018	2.1	11.5	0.1	2.7	-0.9	0.0	4.3	0.0	0.0	22.7	5.3	-1.0	3.4
2019	-0.3	-1.0	0.7	0.8	1.1	0.0	3.0	0.0	3.6	2.6	-0.3	3.5	0.5
2020	2.7	-2.3	-2.0	1.0	1.4	0.0	-0.3	0.0	3.0	-0.7	0.0	2.9	1.1
2021	6.8	-1.8	-2.2	1.4	1.1	0.0	-0.6	0.0	2.6	-0.4	0.0	2.4	0.9

Table 8.0: Noro Consumer Price Index by Group (2017=100.0)

Year/ Month	Food & Non-Alcoholic Beverages	Alcoholic beverages, tobacco narcotics	Clothing & footwear	Housing, water, electricity, gas & other fuels	Furnishings, household equipment & routine household maintenance	Health	Transport	Communication	Recreation & culture	Education	Restaurants & hotels	Miscellaneous goods & services	All Items
2020 March	114.5	117.5	99.7	111.8	95.1	100.0	106.0	100.0	102.1	126.8	105.5	97.2	110.5
April	115.3	117.5	99.7	110.7	99.6	100.0	106.0	100.0	102.1	126.8	105.5	97.2	111.0
May	114.0	117.5	99.7	106.6	99.5	100.0	106.6	100.0	102.1	126.8	105.5	97.2	110.0
June	113.3	119.7	99.7	107.1	99.5	100.0	105.5	100.0	102.1	126.8	105.5	99.7	109.9
July	113.9	119.9	101.9	105.3	103.6	100.0	105.5	100.0	102.1	126.8	105.5	99.7	110.2
August	114.0	120.1	100.4	107.5	103.5	100.0	105.9	100.0	103.1	126.8	105.5	99.8	110.6
September	111.9	120.1	100.7	106.9	103.8	100.0	104.9	100.0	103.1	126.8	105.5	103.1	109.6
October	106.5	120.1	100.2	109.0	102.8	100.0	103.3	100.0	103.1	126.8	105.5	103.3	107.3
November	101.0	119.0	99.9	109.4	104.3	100.0	101.8	100.0	103.1	126.8	105.5	103.3	104.8
December	101.1	119.0	99.9	110.7	104.3	100.0	101.8	100.0	103.1	126.8	105.5	103.3	105.0
2021 January	102.0	119.0	99.9	111.6	104.3	100.0	102.1	100.0	103.1	106.0	105.5	103.3	105.2
February	102.6	119.0	99.9	114.0	104.3	100.0	102.2	100.0	103.1	106.0	105.5	102.2	105.7
March	101.8	119.0	99.8	114.5	104.6	100.0	102.4	100.0	104.1	106.0	105.5	101.2	105.5
April	103.1	113.2	97.2	114.7	105.2	100.0	102.9	100.0	104.1	106.0	105.5	101.2	105.5
May	101.9	99.4	97.2	111.0	105.9	100.0	102.9	100.0	104.1	106.0	105.5	100.0	101.9
June	102.0	99.4	101.0	110.5	106.7	100.0	102.1	100.0	104.1	106.0	105.5	99.5	102.1
July	105.3	99.4	100.6	111.4	107.6	100.0	101.4	100.0	104.1	106.0	105.5	103.4	104.4
August	102.5	102.4	98.2	112.5	108.7	100.0	103.4	100.0	104.1	106.0	105.5	108.6	104.1
September	103.5	99.7	95.9	114.0	109.4	100.0	103.4	100.0	104.1	106.0	105.5	106.0	104.4
October	104.7	95.9	95.9	114.9	110.8	100.0	103.4	100.0	104.1	106.0	98.0	106.0	104.5
November	103.1	94.9	96.1	113.6	110.8	100.0	103.4	100.0	104.1	106.0	98.0	104.4	103.6
December	104.2	94.6	96.1	116.7	110.8	100.0	103.8	100.0	104.1	106.0	98.0	104.4	104.4
2022 January /r	98.3	96.5	96.2	118.6	110.9	100.0	103.8	100.0	104.1	106.0	98.0	105.1	102.4
February	98.7	97.2	95.8	119.2	111.4	100.0	104.0	100.0	104.1	106.0	96.4	104.9	102.7
March	103.3	95.6	96.2	118.9	111.0	100.0	104.0	100.0	104.1	106.0	105.5	104.5	103.3
Percentage Change in the CPI by Group													
<i>(a) on the previous month</i>													
2020 March	1.9	0.0	-2.4	0.8	-0.1	0.0	0.0	0.0	0.0	0.0	0.0	0.0	0.8
April	0.7	0.0	0.0	-1.0	4.7	0.0	0.0	0.0	0.0	0.0	0.0	0.0	0.5
May	-1.1	0.0	0.0	-3.7	-0.1	0.0	0.6	0.0	0.0	0.0	0.0	0.0	-0.9
June	-0.6	1.9	0.0	0.5	0.0	0.0	-1.0	0.0	0.0	0.0	0.0	2.6	-0.1
July	0.5	0.2	2.2	-1.7	4.1	0.0	0.0	0.0	0.0	0.0	0.0	0.0	0.3
August	0.1	0.2	-1.5	2.1	-0.1	0.0	0.4	0.0	1.0	0.0	0.0	0.1	0.4
September	-1.8	0.0	0.3	-0.6	0.3	0.0	-0.9	0.0	0.0	0.0	0.0	3.3	-0.9
October	-4.8	0.0	-0.5	2.0	-1.0	0.0	-1.5	0.0	0.0	0.0	0.0	0.2	-2.1
November	-5.2	-0.9	-0.3	0.4	1.5	0.0	-1.5	0.0	0.0	0.0	0.0	0.0	-2.3
December	0.1	0.0	0.0	1.2	0.0	0.0	0.0	0.0	0.0	0.0	0.0	0.0	0.2
2021 January /r	0.9	0.0	0.0	0.8	0.0	0.0	0.3	0.0	0.0	-16.4	0.0	0.0	0.2
February	0.6	0.0	0.0	2.2	0.0	0.0	0.1	0.0	0.0	0.0	0.0	-1.1	0.5
March	-0.8	0.0	-0.1	0.4	0.3	0.0	0.2	0.0	1.0	0.0	0.0	-1.0	-0.2
April	1.3	-4.9	-2.6	0.2	0.6	0.0	0.5	0.0	0.0	0.0	0.0	0.0	0.0
May	-1.2	-12.2	0.0	-3.2	0.7	0.0	0.0	0.0	0.0	0.0	0.0	-1.2	-3.4
June	0.1	0.0	3.9	-0.5	0.8	0.0	-0.8	0.0	0.0	0.0	0.0	-0.5	0.2
July	3.2	0.0	-0.4	0.8	0.8	0.0	-0.7	0.0	0.0	0.0	0.0	3.9	1.5
August	-2.7	3.0	-2.4	1.0	1.0	0.0	2.0	0.0	0.0	0.0	0.0	5.0	-0.3
September	1.0	-2.6	-2.3	1.3	0.6	0.0	0.0	0.0	0.0	0.0	0.0	-2.4	0.3
October	0.8	-3.8	0.0	0.3	1.3	0.0	0.0	0.0	0.0	0.0	-7.1	0.0	-0.1
November	-1.5	-1.0	0.2	-1.1	0.0	0.0	0.0	0.0	0.0	0.0	0.0	-1.5	-0.9
December	1.1	-0.3	0.0	2.7	0.0	0.0	0.3	0.0	0.0	0.0	0.0	0.0	0.8
2022 January /r	-5.7	2.0	0.1	1.6	0.1	0.0	0.0	0.0	0.0	0.0	0.0	0.7	-1.9
February	0.4	0.7	-0.4	0.5	0.5	0.0	0.2	0.0	0.0	0.0	-1.6	-0.2	0.3
March	4.7	-0.1	0.0	-0.3	-0.2	0.0	0.0	0.0	0.0	0.0	7.7	-0.4	0.7
<i>(b) on the same month a year ago</i>													
2020 March	8.0	0.3	-0.6	-0.9	-2.3	0.0	1.3	0.0	2.1	0.0	0.0	-1.7	3.3
April	8.8	-0.2	-0.6	1.4	2.6	0.0	0.5	0.0	2.1	0.0	0.0	-1.7	4.0
May	5.4	-0.2	-0.6	-2.5	2.5	0.0	0.8	0.0	2.1	0.0	0.0	-1.7	2.1
June	1.6	2.4	-1.7	-0.9	1.9	0.0	-0.8	0.0	0.0	0.0	0.0	-0.2	0.8
July	2.2	2.6	0.5	-3.2	6.1	0.0	-0.6	0.0	0.0	0.0	0.0	1.3	1.1
August	3.5	2.8	-1.0	-1.2	6.0	0.0	-0.5	0.0	1.0	0.0	0.0	2.7	1.9
September	0.4	2.5	-0.7	-2.1	6.4	0.0	-1.0	0.0	1.0	0.0	0.0	6.1	0.6
October	-4.7	2.6	-1.2	-1.0	5.3	0.0	-2.5	0.0	1.0	0.0	0.0	6.3	-1.8
November	-9.6	1.7	-1.5	-1.0	6.9	0.0	-4.0	0.0	1.0	0.0	0.0	6.3	-4.1
December	-9.0	1.7	-1.5	0.7	6.9	0.0	-4.0	0.0	1.0	0.0	0.0	6.3	-3.7
2021 January /r	-6.7	1.3	-2.5	0.0	7.2	0.0	-3.7	0.0	1.0	-16.4	0.0	6.3	-3.0
February	-8.7	1.3	-2.3	2.8	9.6	0.0	-3.6	0.0	1.0	-16.4	0.0	5.1	-3.6
March	-11.1	1.3	0.1	2.4	10.0	0.0	-3.4	0.0	2.0	-16.4	0.0	4.1	-4.5
April	-10.6	-3.7	-2.5	3.6	5.6	0.0	-2.9	0.0	2.0	-16.4	0.0	4.1	-5.0
May	-10.6	-15.4	-2.5	4.1	6.4	0.0	-3.5	0.0	2.0	-16.4	0.0	2.9	-7.4
June	-10.0	-17.0	1.3	3.2	7.2	0.0	-3.2	0.0	2.0	-16.4	0.0	-0.2	-7.1
July	-7.6	-17.1	-1.3	5.8	3.9	0.0	-3.9	0.0	2.0	-16.4	0.0	3.7	-5.3
August	-10.1	-14.7	-2.2	4.7	5.0	0.0	-2.4	0.0	1.0	-16.4	0.0	8.8	-5.9
September	-7.5	-17.0	-4.8	6.6	5.4	0.0	-1.4	0.0	1.0	-16.4	0.0	2.8	-4.7
October	-1.7	-20.1	-4.3	5.4	7.8	0.0	0.1	0.0	1.0	-16.4	-7.1	2.6	-2.6
November	2.1	-20.3	-3.8	3.8	6.2	0.0	1.6	0.0	1.0	-16.4	-7.1	1.1	-1.1
December	3.1	-20.5	-3.8	5.4	6.2	0.0	2.0	0.0	1.0	-16.4	-7.1	1.1	-0.6
2022 January /r	-3.6	-18.9	-3.7	6.3	6.3	0.0	1.7	0.0	1.0	0.0	-7.1	1.7	-2.7
February	-3.8	-18.3	-4.1	4.6	6.8	0.0	1.8	0.0	1.0	0.0	-8.6	2.6	-2.8
March	1.5	-19.7	-3.6	3.8	6.1	0.0	1.6	0.0	0.0	0.0	0.0	3.3	-2.1

Table 8.1: Noro Consumer Price Index by Group (2017=100.0)

Year/ Month	Food & Non-Alcoholic Beverages	Alcoholic beverages, tobacco & narcotics	Clothing & footwear	Housing, water, electricity, gas & other fuels	Furnishings, household equipment & routine household maintenance	Health	Transport	Communication	Recreation & culture	Education	Restaurants & hotels	Miscellaneous goods & services	All Items
Percentage Change in the CPI by Group													
<i>(c) 3 months moving average on same period a year ago</i>													
2020 March	5.5	-0.1	1.2	1.2	-1.7	0.0	1.5	0.0	2.1	0.0	0.0	-1.7	2.6
April	7.7	0.3	0.2	1.6	-0.6	0.0	1.3	0.0	2.1	0.0	0.0	-1.7	3.6
May	7.4	0.0	-0.6	-0.7	0.9	0.0	0.9	0.0	2.1	0.0	0.0	-1.7	3.1
June	5.2	0.7	-1.0	-0.7	2.3	0.0	0.2	0.0	1.4	0.0	0.0	-1.2	2.3
July	3.1	1.6	-0.6	-2.2	3.5	0.0	-0.2	0.0	0.7	0.0	0.0	-0.2	1.4
August	2.5	2.6	-0.7	-1.8	4.7	0.0	-0.6	0.0	0.3	0.0	0.0	1.3	1.3
September	2.1	2.6	-0.4	-2.2	6.2	0.0	-0.7	0.0	0.7	0.0	0.0	3.3	1.2
October	-0.3	2.6	-1.0	-1.4	5.9	0.0	-1.4	0.0	1.0	0.0	0.0	5.0	0.2
November	-4.6	2.3	-1.1	-1.4	6.2	0.0	-2.5	0.0	1.0	0.0	0.0	6.2	-1.8
December	-7.8	2.0	-1.4	-0.4	6.4	0.0	-3.5	0.0	1.0	0.0	0.0	6.3	-3.2
2021 January	-8.4	1.6	-1.8	-0.1	7.0	0.0	-3.9	0.0	1.0	-5.5	0.0	6.3	-3.6
February	-8.1	1.4	-2.1	1.2	7.9	0.0	-3.7	0.0	1.0	-10.9	0.0	5.9	-3.4
March	-8.9	1.3	-1.6	1.7	8.9	0.0	-3.6	0.0	1.3	-16.4	0.0	5.2	-3.7
April	-10.1	-0.4	-1.6	2.9	8.3	0.0	-3.3	0.0	1.6	-16.4	0.0	4.5	-4.3
May	-10.8	-5.9	-1.6	3.4	7.3	0.0	-3.3	0.0	2.0	-16.4	0.0	3.7	-5.6
June	-10.4	-12.0	-1.2	3.6	6.4	0.0	-3.2	0.0	2.0	-16.4	0.0	2.2	-6.5
July	-9.4	-16.5	-0.8	4.4	5.8	0.0	-3.5	0.0	2.0	-16.4	0.0	2.1	-6.0
August	-9.2	-16.3	-0.7	4.5	5.3	0.0	-3.2	0.0	1.6	-16.4	0.0	4.1	-5.8
September	-8.4	-16.3	-2.7	5.7	4.8	0.0	-2.6	0.0	1.3	-16.4	0.0	5.1	-5.3
October	-6.4	-17.3	-3.8	5.7	6.1	0.0	-1.2	0.0	1.0	-16.4	-2.4	4.7	-4.4
November	-2.4	-19.1	-4.3	5.4	6.5	0.0	0.1	0.0	1.0	-16.4	-4.7	2.2	-2.8
December	1.1	-20.3	-4.0	4.9	6.7	0.0	1.2	0.0	1.0	-16.4	-7.1	1.6	-1.5
2022 January/r	6.9	4.7	-0.2	5.6	-1.9	0.0	2.4	0.0	0.0	9.0	0.0	-0.5	4.5
February	4.5	1.4	-0.2	8.1	-2.0	0.0	1.6	0.0	0.0	3.4	0.0	-0.4	3.3
March	-2.0	-19.4	-3.6	4.9	6.3	0.0	1.7	0.0	0.7	0.0	-4.7	2.6	-2.6
Consumer Price Index - Annual (2017=100.0)													
2010	90.1	49.1	82.3	57.2	93.6	56.5	90.3	119.7	81.1	85.5	69.7	99.5	79.0
2011	94.0	56.4	83.3	68.5	98.0	55.9	98.0	84.2	83.0	89.1	80.5	103.2	84.8
2012	97.9	58.7	83.9	79.8	102.3	71.9	98.0	78.4	87.5	89.6	89.2	108.6	89.8
2013	100.3	64.3	92.1	92.7	100.8	78.0	100.0	78.4	87.5	83.9	95.1	111.3	94.6
2014	103.5	80.9	95.9	101.0	101.8	84.9	101.2	78.4	87.5	88.1	96.1	114.9	99.6
2015	100.4	82.3	104.6	100.7	103.2	93.2	97.3	100.0	96.1	94.2	96.1	116.9	99.0
2016	100.9	91.9	103.9	99.2	102.6	100.0	97.3	100.0	99.6	94.2	96.1	110.7	99.5
2017	100.0	100.0	100.0	100.0	100.0	100.0	100.0	100.0	100.0	100.0	100.0	100.0	100.0
2018	104.2	113.1	100.2	102.6	98.9	100.0	104.2	100.0	100.0	122.7	105.5	99.0	104.5
2019	109.3	117.0	101.4	109.9	97.6	100.0	106.0	100.0	102.1	126.8	105.5	97.2	109.0
2020	110.6	118.8	100.5	109.0	100.7	100.0	104.9	100.0	102.5	126.8	105.5	99.9	108.9
2021	103.1	104.7	98.2	113.3	107.4	100.0	102.8	100.0	103.9	106.0	103.6	103.4	104.4
(d) Annual Percentage Change													
2010	-2.9	11.8	8.7	-0.9	3.8	1.1	7.2	-11.0	1.0	11.9	7.9	5.5	0.9
2011	4.4	14.8	1.2	19.7	4.7	-1.1	8.5	-29.6	2.4	4.3	15.4	3.7	7.4
2012	4.1	4.0	0.7	16.5	4.4	28.5	0.0	-6.9	5.4	0.5	10.8	5.2	5.9
2013	2.4	9.5	9.8	16.1	-1.4	8.5	2.0	0.0	0.0	-6.3	6.6	2.5	5.3
2014	3.2	25.8	4.1	9.0	1.0	8.8	1.3	0.0	0.0	5.0	1.1	3.3	5.3
2015	-3.0	1.8	9.1	-0.3	1.4	9.8	-3.9	27.5	9.8	7.0	0.0	1.7	-0.6
2016	0.5	11.6	-0.7	-1.5	-0.6	7.3	0.0	0.0	3.6	0.0	0.0	-5.3	0.5
2017	-0.9	8.9	-3.7	0.8	-2.6	0.0	2.8	0.0	0.4	6.1	4.0	-9.7	0.5
2018	4.2	13.1	0.2	2.6	-1.1	0.0	4.2	0.0	0.0	22.7	5.5	-1.0	4.5
2019	4.9	3.7	0.7	6.7	-1.4	0.0	1.3	0.0	1.2	3.3	0.0	-0.7	3.5
2020	1.2	1.3	-0.4	-0.5	3.3	0.0	-0.6	0.0	1.3	0.0	0.0	1.6	0.7
2021	-6.8	-11.9	-2.4	4.0	6.7	0.0	-2.0	0.0	1.4	-16.4	-1.8	3.5	-4.1

About the Bulletin

Concepts and Definitions

Consumer Price Index (CPI): The Consumer Price Index (CPI) is a measure of the average change in the price levels of a basket of consumer goods and services purchased by households at a specified time relative to a base year. The current CPI is referred to as the Solomon Islands CPI given its coverage of Honiara urban, Auki urban, Gizo urban and Noro urban as a proxy for the country.

The Solomon Islands CPI is the weighted average of the four urban localities priced. These collected representative prices are aggregated using the data from the 2012/13 Household Income and Expenditure Survey (HIES). Further details are discussed in the Data Quality Statement below and in the Technical Note: 1/2018 CPI – Series 3 Reweight released in September 2018.

Inflation: The percentage change in the CPI from one period relative to another is referred to as a measure of inflation. The CPI is often referred to as the headline CPI generating the official headline inflation. In Solomon Islands, inflation is limited to the current CPI basket of goods and services and thus does not represent all price movements of all goods and services in the economy. It is generally a broad measure of the cost of living in the country.

Underlying Inflation: The underlying inflation (or the underlying rate of inflation) measure attempts to isolate the effects of the price shocks in inflation while retaining persistent movements. Such a measure is more useful than the headline inflation for purposes of analysis such as in developing and monitoring monetary and fiscal policies. This measure is often referred to as core inflation depending on the choice of the type of underlying rate measure. Four underlying rate measures have been produced based on the exclusion approach and mentioned below. More details can be sourced from any copy of a 2017 CPI publication (annex 1):

- I. All CPI excluding Volatile Items. The volatile items include: Fruit and Vegetables + Fresh seafood + Betel nut + Motor vehicle fuel (petrol & diesel) + Fuel for household utilities (kerosene)
- II. All CPI excluding Volatile Items and Price Control Items: The price control items include: First Grade Taiyo can fish + Bus fares + Taxi fares
- III. All CPI excluding Volatile, Price Control and Excise Items: The excise items include Alcohol + Tobacco
- IV. All CPI excluding Volatile, Price Control, Excise Items and Other Selected Items: The other selected items include: house rent (public service), telephone charges, electricity and water, 3rd party insurance, transport fares and education.

Symbols used

r: revised, p : preliminary, e : estimated, na : not available, -- : no items in this category, — : nil or rounded to zero

Small discrepancies between totals and sums are due to rounding.

Upcoming Releases

April CPI Week beginning May 23th, 2022

May CPI Week beginning June 13th, 2022

June CPI Week beginning July 18th, 2022

Data Quality Statement: Consumer Price Index

Data Source:	Price survey (collections) of selected retail outlets and markets by the National Statistics Office (SINSO)																																																																																																																								
Institutional Environment:	<p>Data Collector(s): The SINSO collects the data from various retail outlets, the main Honiara Central Market, other betel nut area markets, and certain service providers.</p> <p>Collection authority: The data is collected under the Statistics Act 1970 (and 2007 Amendments), and the Census Act 1959.</p> <p>Data Compiler(s): The SINSO compiles the data.</p> <p>Additional information: Statistical confidentiality is guaranteed under the Statistics Act 1970 (and 2007 Amendments).</p>																																																																																																																								
Relevance:	<p>Data coverage: The SINSO collects price data on a wide range of consumer goods and services that constitutes an updated Solomon Islands ‘basket’ of 205 items based on the 2012/13 Household Income and Expenditure Survey (HIES). This basket reflects broadly the spending behavior of households in urban areas of Honiara (Guadalcanal Province), Auki (Malaita), Gizo (Western Province) and Noro (Western Province). The basket of items by national and urban locality are classified according to 12 main expenditure categories or groups: 1. Food & non-alcoholic beverages, 2. Alcoholic beverages, tobacco & narcotics, 3. Clothing & footwear, 4. Housing, water, electricity, gas & other fuels, 5. Furnishings, household equipment & routine household maintenance, 6. Health, 7. Transport, 8. Communication, 9. Recreation & culture e, 10. Education, 11. Restaurants & hotels, 12. Miscellaneous goods & services. The respective basket of items for the four urban areas include Honiara (205 items), Auki (169 items), Gizo (176 items) and Noro (168 items).</p> <p>The goods and services that are included in the basket and their relative importance represented by the weights allocated from expenditure information from the HIES 2012/13 are shown in the table below:</p> <table border="1" style="width: 100%; border-collapse: collapse; margin-top: 10px;"> <thead> <tr> <th colspan="8" style="text-align: left;">SERIES THREE CPI WEIGHTS - 2012-13 HIES</th> </tr> <tr> <th style="text-align: left;">Division</th> <th style="text-align: center;">Solomon Islands</th> <th style="text-align: center;">Auki</th> <th style="text-align: center;">Gizo</th> <th style="text-align: center;">Noro</th> <th style="text-align: center;">Honiara</th> <th style="text-align: center;">Honiara weight to SI</th> <th style="text-align: center;">Auki, Gizo & Noro weight to SI</th> </tr> </thead> <tbody> <tr> <td>All Groups</td> <td style="text-align: center;">100.000</td> <td style="text-align: center;">100.000</td> <td style="text-align: center;">100.000</td> <td style="text-align: center;">100.000</td> <td style="text-align: center;">100.000</td> <td style="text-align: center;">88.102</td> <td style="text-align: center;">11.898</td> </tr> <tr> <td>Food and Non-Alcoholic Beverages</td> <td style="text-align: center;">34.290</td> <td style="text-align: center;">40.300</td> <td style="text-align: center;">43.624</td> <td style="text-align: center;">41.784</td> <td style="text-align: center;">33.262</td> <td style="text-align: center;">85.462</td> <td style="text-align: center;">14.538</td> </tr> <tr> <td>Alcoholic beverages, tobacco and narcotics</td> <td style="text-align: center;">12.446</td> <td style="text-align: center;">11.531</td> <td style="text-align: center;">9.727</td> <td style="text-align: center;">11.801</td> <td style="text-align: center;">12.639</td> <td style="text-align: center;">89.467</td> <td style="text-align: center;">10.533</td> </tr> <tr> <td>Clothing and footwear</td> <td style="text-align: center;">2.616</td> <td style="text-align: center;">3.615</td> <td style="text-align: center;">2.618</td> <td style="text-align: center;">2.178</td> <td style="text-align: center;">2.590</td> <td style="text-align: center;">87.240</td> <td style="text-align: center;">12.760</td> </tr> <tr> <td>Housing, water, electricity, gas and other fuels</td> <td style="text-align: center;">16.585</td> <td style="text-align: center;">17.423</td> <td style="text-align: center;">13.045</td> <td style="text-align: center;">11.834</td> <td style="text-align: center;">16.920</td> <td style="text-align: center;">89.879</td> <td style="text-align: center;">10.121</td> </tr> <tr> <td>Furnishings, hh equip & routine hh maintenance</td> <td style="text-align: center;">2.998</td> <td style="text-align: center;">3.230</td> <td style="text-align: center;">3.504</td> <td style="text-align: center;">5.142</td> <td style="text-align: center;">2.869</td> <td style="text-align: center;">84.301</td> <td style="text-align: center;">15.699</td> </tr> <tr> <td>Health</td> <td style="text-align: center;">0.272</td> <td style="text-align: center;">0.140</td> <td style="text-align: center;">0.170</td> <td style="text-align: center;">0.099</td> <td style="text-align: center;">0.290</td> <td style="text-align: center;">94.029</td> <td style="text-align: center;">5.971</td> </tr> <tr> <td>Transport</td> <td style="text-align: center;">17.549</td> <td style="text-align: center;">11.649</td> <td style="text-align: center;">14.069</td> <td style="text-align: center;">13.041</td> <td style="text-align: center;">18.174</td> <td style="text-align: center;">91.242</td> <td style="text-align: center;">8.758</td> </tr> <tr> <td>Communication</td> <td style="text-align: center;">6.329</td> <td style="text-align: center;">6.506</td> <td style="text-align: center;">5.440</td> <td style="text-align: center;">7.620</td> <td style="text-align: center;">6.303</td> <td style="text-align: center;">87.743</td> <td style="text-align: center;">12.257</td> </tr> <tr> <td>Recreation and culture</td> <td style="text-align: center;">1.372</td> <td style="text-align: center;">1.367</td> <td style="text-align: center;">1.700</td> <td style="text-align: center;">2.076</td> <td style="text-align: center;">1.326</td> <td style="text-align: center;">85.142</td> <td style="text-align: center;">14.858</td> </tr> <tr> <td>Education</td> <td style="text-align: center;">2.656</td> <td style="text-align: center;">2.006</td> <td style="text-align: center;">3.251</td> <td style="text-align: center;">1.934</td> <td style="text-align: center;">2.691</td> <td style="text-align: center;">89.261</td> <td style="text-align: center;">10.739</td> </tr> <tr> <td>Restaurants and hotels</td> <td style="text-align: center;">1.417</td> <td style="text-align: center;">1.048</td> <td style="text-align: center;">1.610</td> <td style="text-align: center;">0.784</td> <td style="text-align: center;">1.453</td> <td style="text-align: center;">90.366</td> <td style="text-align: center;">9.634</td> </tr> <tr> <td>Miscellaneous goods and services</td> <td style="text-align: center;">1.470</td> <td style="text-align: center;">1.186</td> <td style="text-align: center;">1.242</td> <td style="text-align: center;">1.707</td> <td style="text-align: center;">1.482</td> <td style="text-align: center;">88.852</td> <td style="text-align: center;">11.148</td> </tr> </tbody> </table> <p>Honiara has the biggest weight (88.1%) relative to the national average/all other urban areas and thus price movements in the Honiara CPI/basket has a relatively bigger effect on the national average and the CPIs of most of the other small towns, although the extent of price movements can be attributed to varying local demand and supply conditions.</p>	SERIES THREE CPI WEIGHTS - 2012-13 HIES								Division	Solomon Islands	Auki	Gizo	Noro	Honiara	Honiara weight to SI	Auki, Gizo & Noro weight to SI	All Groups	100.000	100.000	100.000	100.000	100.000	88.102	11.898	Food and Non-Alcoholic Beverages	34.290	40.300	43.624	41.784	33.262	85.462	14.538	Alcoholic beverages, tobacco and narcotics	12.446	11.531	9.727	11.801	12.639	89.467	10.533	Clothing and footwear	2.616	3.615	2.618	2.178	2.590	87.240	12.760	Housing, water, electricity, gas and other fuels	16.585	17.423	13.045	11.834	16.920	89.879	10.121	Furnishings, hh equip & routine hh maintenance	2.998	3.230	3.504	5.142	2.869	84.301	15.699	Health	0.272	0.140	0.170	0.099	0.290	94.029	5.971	Transport	17.549	11.649	14.069	13.041	18.174	91.242	8.758	Communication	6.329	6.506	5.440	7.620	6.303	87.743	12.257	Recreation and culture	1.372	1.367	1.700	2.076	1.326	85.142	14.858	Education	2.656	2.006	3.251	1.934	2.691	89.261	10.739	Restaurants and hotels	1.417	1.048	1.610	0.784	1.453	90.366	9.634	Miscellaneous goods and services	1.470	1.186	1.242	1.707	1.482	88.852	11.148
SERIES THREE CPI WEIGHTS - 2012-13 HIES																																																																																																																									
Division	Solomon Islands	Auki	Gizo	Noro	Honiara	Honiara weight to SI	Auki, Gizo & Noro weight to SI																																																																																																																		
All Groups	100.000	100.000	100.000	100.000	100.000	88.102	11.898																																																																																																																		
Food and Non-Alcoholic Beverages	34.290	40.300	43.624	41.784	33.262	85.462	14.538																																																																																																																		
Alcoholic beverages, tobacco and narcotics	12.446	11.531	9.727	11.801	12.639	89.467	10.533																																																																																																																		
Clothing and footwear	2.616	3.615	2.618	2.178	2.590	87.240	12.760																																																																																																																		
Housing, water, electricity, gas and other fuels	16.585	17.423	13.045	11.834	16.920	89.879	10.121																																																																																																																		
Furnishings, hh equip & routine hh maintenance	2.998	3.230	3.504	5.142	2.869	84.301	15.699																																																																																																																		
Health	0.272	0.140	0.170	0.099	0.290	94.029	5.971																																																																																																																		
Transport	17.549	11.649	14.069	13.041	18.174	91.242	8.758																																																																																																																		
Communication	6.329	6.506	5.440	7.620	6.303	87.743	12.257																																																																																																																		
Recreation and culture	1.372	1.367	1.700	2.076	1.326	85.142	14.858																																																																																																																		
Education	2.656	2.006	3.251	1.934	2.691	89.261	10.739																																																																																																																		
Restaurants and hotels	1.417	1.048	1.610	0.784	1.453	90.366	9.634																																																																																																																		
Miscellaneous goods and services	1.470	1.186	1.242	1.707	1.482	88.852	11.148																																																																																																																		

Across all Expenditure Groups, Food and Non-Alcoholic Beverages (34.2%), Housing, Water, Electricity, Gas, Other Fuels (16.6%) and Transport (17.5%) are three most important consumer expenditures and thus have a bigger combined effect on price movements in the CPI baskets of all urban areas.

Level of geography: The scope of the Solomon Islands national CPI includes provincial urban centers of Honiara, Auki, Noro and Gizo.

Summary details of the process of updating the new basket and the reweight process based on the 2012-13 HIES can be sourced from the Technical Note 1/2018 Solomon Islands Consumer Price Index – Series 3 Reweight.

Key Data Items: Key indicators include: headline inflation and underlying inflation by main expenditure categories and by locality, and headline CPI by imported and domestic items. These indicators are presented periodically (i.e. month on month and 3-months moving average) and released on monthly frequency. The annual (year on year) series is made available on request.

The underlying or core inflation measures include: I. All CPI excluding Volatile Items; II. All CPI excluding Volatile Items and Price Control Items; III. All CPI excluding Volatile, Price Control and Excise Items; and IV. All CPI excluding Volatile, Price Control, Excise Items and Other Selected Items. Technical notes can be sourced from previous publications (annex 1).

Compilation methodology: The SINSO applies the internationally recognized Laspeyres method based on the weighted Laspeyres' index for computing the CPI. In the current updated CPI, price relatives are calculated as geometric means and used to create the price index following international best practice. The rebase period is 2013=100 and the index reference period for the time series is 2017=100. This method is applied by locality where separate CPIs for Honiara, Auki, Gizo and Noro are produced and then aggregated as a weighted average for the national index. The exclusion based method is applied in deriving the underlying inflation rate measures.

Standard classifications: The SINSO used to adopt the UN Classification Of Individual Consumption according to Purpose (COICOP) to classify data within the Solomon Islands context but has now harmonized its classification with the Pacific regional COICOP for regional comparability purposes.

International standards have been followed as closely as practical in developing the weights for the new series (2017=100) of the CPI. The ILO CPI Manual (2004) has been the primary reference, followed by ILO Resolution II: Resolution Concerning Consumer Price Indices (2003). In instances where the treatment of commodities has differed from international standards, the reasons have been to acknowledge practical difficulties in price collection, to take account of specific national conditions, or to ensure that the CPI is a robust measure of exposure to price change.

Numerator/Denominator Source: The numerators and denominators for percentages are from the same data source.

Additional information: The CPI and inflation are key economic indicators that are able to inform the country's key monetary and fiscal (budgetary) policies, and inform the general public about the general cost of living in Honiara or the country. Apart from the availability of other official price measures, other uses of the CPI include informing decision making and assessments about inflation adjusted wage indexation policies.

The CPI is also used as a deflator of other economic data. For example, the CPI and its components are used to adjust Gross Domestic Product by Expenditure (GDP-E) in current prices for price changes and to convert these series into inflation adjusted series or GDP at constant prices.

	<p>Caution must be considered in terms on interpreting data when disaggregated into sub-national (locality) level due to the relative size of the sample (basket), relative size and nature of CPI outlets and markets, and household (consumer) behavior when making inferences on the type of indicator.</p>
Timeliness:	<p>Data collected: The SINSO collects the prices of fresh fruit, vegetables and meat weekly and collects the prices of all other items during any one day in the second half of the month.</p> <p>Data available: The data is usually available 2 weeks after the reference month.</p> <p>Referenced Period: The data is published for a particular calendar month. The data is published on a monthly, quarterly (3-months moving average) and annual frequencies.</p> <p>Additional information: There are sometimes revisions to data after release where data for missing prices becomes available or if adjustments need to be made to accommodate changes following recognized statistical techniques.</p>
Accuracy:	<p>Method of Collection: The SINSO collects data mainly by direct approach (visits) in the collections of prices in retail outlets and markets, and by face-to-face approach from selected service providers.</p> <p>Data Adjustments: Data are sometimes adjusted to accommodate changes in product specifications and branding following recognized statistical techniques</p> <p>Additional information: The SINSO uses a quality assurance process to minimize data quality issues, item specifications issues and processing errors.</p>
Coherence:	<p>Consistency over time: The data is consistent over time since 1992. The series was linked (spliced) in 2005 to maintain consistency in series back to the 1992 base year. Due to the loss of past data records as a consequence of the ethnic tensions from 1998 to 2003, the SINSO has not officially published a linked series prior to 1992. However, users who possess older records of the data are able to link back the series to meet their own interests.</p> <p>Progressive improvements in definitions and methods have been applied since the first iteration of the index. Prior to independence in 1978 and up to mid-1990s (with the conduct of the 1982 and 1990/91 sample Household Income and Expenditure Survey (HIESs, limited coverage), the Retail Price Index (RPI) was the first index used as a measure of the changes in the prices of goods and services in Honiara. The weighting scheme and the basket of goods and services captured in the 1982 HIES reflected predominantly residents and expatriate household expenditures in urban Honiara.</p> <p>In 2005/6, another HIES covering Solomon Islands citizen/resident households was undertaken to update of the CPI weights based on the 1990/91 survey. The updated CPI with base period (2005=100) followed similar methods in reweighting and in updating the basket which included 187 items. In 2012/13, the SINSO undertook another HIES. The data from the 2012/13 HIES formed the basis for the current updated CPI (Series 3 - Honiara) with a new reference period (2017=100). This is now being released through this publication (First Release: Honiara Consumer Price Index: Series 3). The process of updating the new basket and the reweighting process is now expanded to include other provincial towns of Auki, Noro and Gizo. Further basic information can be obtained from the Technical Note 1/2018 Solomon Islands Consumer Price Index – Series 3 Reweight.</p> <p>The SINSO plans through the National Statistics Development Strategy (NSDS) 2015-16 to 2035 that the CPI weights and basket of goods and services be regularly updated approximately every 10 years (more preferably 5-years) from data from the conduct of HIES.</p>

	<p>Additional information: There are no actual price data for some months of the year 2000 during the period of ‘The Tensions’. During the civil unrest period in 1998 to 2003, the SINSO also lost a number of data files and records during this period.</p> <p>Actual prices collected for the provincial localities (Gizo, Noro, Auki) started from July 2017. Data prior to July 2017 used Honiara prices as proxies.</p>
Interpretability:	<p>The movement in index from one period relative to another can be expressed as a percentage change. In the Solomon Islands context, this percentage change is referred very broadly as headline inflation. The following example illustrates and interprets the percentage change:</p> <p>If we look at the Honiara CPI (All Items) for July 2018 = 103.0 and the same period last year, July 2017 (All Items) CPI=100.5 periods, the index point is the difference between the two index levels, but it is more meaningful to express this movement as a percentage change. Thus, we can calculate the percentage change by subtracting the index value of the previous period (July 2017) from the current period (July 2018) and dividing the resulting value by the index value of the previous period (July 2017) and then multiplying by 100.</p> <p>Thus, $[(103.0-100.5)/100.5] \times 100 = (2.50/100.5) \times 100 = 0.0248756 \times 100 = 2.5\%$ (rounded to one decimal point). This implies that prices have increased by 2.5% since July 2017 or from the period July 2017 to July 2018.</p> <p>Similar interpretations can be applied to various periods of comparisons of interest. The SINSO officially reports the headline CPI and headline inflation based on the 3-months moving average period, on the same period in the preceding year. However, data by month and annual are provided for users to support their choice of a particular period for CPI and inflation.</p>
Accessibility:	<p>Users can request unpublished data for issues of statistical bulletins that have already been released by contacting the Prices Unit. There are no costs associated with the provision of this data.</p> <p>Contact details:</p> <p>Email: STATS-Economics@mof.gov.sb Telephone: (+677) 27835 or (+677) 25451</p> <p>Additional information: The data will be made available in a spreadsheet format from the SINSO website (www.statistics.gov.sb) and in a hard copy.</p>

For further information, please contact:

Name:	Anna Luvu
Telephone Number:	(+677) 25451
Email Address:	aluvu@mof.gov.sb